

23-24 ANNUAL REPORT



Pennsylvania
Historical & Museum Commission



Pennsylvania Historical & Museum Commission

The Pennsylvania Historical & Museum Commission (PHMC) is the official history agency of the Commonwealth of Pennsylvania. Created in 1945, PHMC is responsible for the collection, preservation, and interpretation of Pennsylvania's heritage, which we accomplish through the Pennsylvania State Archives, The State Museum of Pennsylvania, the Pennsylvania State Historic Preservation Office, the Bureau of Management Services, and 23 historic sites and museums.

The responsibilities of PHMC, which are based in the Pennsylvania Constitution, are further defined in Title 37 of the Statutes of Pennsylvania (the "History Code") and the Act of April 19, 1929 (the "Administrative Code of 1929").

Commissioners

Hayley Haldeman, *Chair*
C. Kim Bracey
Michele Brooks, *Senator*
Allison Dorsey, *Ph.D.*
Tim Kearney, *Senator*
William V. Lewis Jr.
Robert Malley

Andrew E. Masich, *Ph.D.*
Robert F. Matzie, *Representative*
Caleb M. Pifer
Randell H. Spackman
Ken Weinstein
Parke Wentling, *Representative*
Khalid N. Mumin, *Secretary of Education, ex officio*

Andrea Lowery, *Executive Director*

Our Mission

Discover, protect, and share
Pennsylvania's past, inspiring
others to value and use our history in
meaningful ways.

Our Vision

Pennsylvanians see history
as relevant to their lives.



From the Chair

Dear Friends and Supporters of Pennsylvania's History,

The mission of the Pennsylvania Historical & Museum Commission—preserving and promoting the rich history of the Commonwealth—is vital not only to honor our past but also to guide a brighter future for all Pennsylvanians. As PHMC's Chair, I am pleased to share with you the remarkable achievements and ongoing work of our agency over the past year.

To start, I was honored to be sworn into my position last summer, along with five other new commissioners. I am incredibly thankful to the excellent staff of PHMC, as well as our returning Commissioners, for a welcoming and enthusiastic introduction to the Commission.

I've spent the last year diving into PHMC, including its mission and operations. PHMC is unique, not only in Pennsylvania but also across the nation, as one of the few state agencies that oversees historical properties, a state museum, and a state archives, along with numerous other functions. Although the agency's responsibilities are vast and varied, I'm struck time and time again by the constant thread of PHMC's engagement with Pennsylvania's citizens and local communities.

From the heart of our major cities to the farthest reaches of our rural counties, PHMC is dedicated to helping preserve the history of every region of Pennsylvania. Whether it's assisting local museums and historical societies, supporting preservation initiatives, or helping sites tell the diverse stories that make Pennsylvania unique, we are honored to be involved in these meaningful endeavors.

PHMC's role is also essential in maintaining the integrity of government records and documents that are foundational to the effective functioning of our state. We were extraordinarily proud to open our new state-of-the-art Pennsylvania State Archives building earlier this year. I encourage everyone to visit whenever they are in Harrisburg.

Finally, history is not only a means of connecting to our past but also a powerful driver of economic growth. Through our state's many historic sites, museums, and cultural programs, PHMC helps to attract tourists from across the country and around the world. PHMC also supports the revitalization of communities through our grant programs and tax credit initiatives.

We are incredibly excited for the year ahead, particularly as we plan for America's 250th anniversary. As we look to the future, we remain committed to preserving and celebrating the diverse history of Pennsylvania. We are grateful for the ongoing support of our dedicated staff, partners, and communities across the state, and we look forward to continuing to work together to ensure that our Commonwealth's history remains a vital and cherished resource for generations to come.

Thank you for your continued support of the Pennsylvania Historical & Museum Commission.

Sincerely,

Hayley A. Haldeman

Hayley Haldeman
Chair



From the Executive Director

Dear Friends,

As we reflect on another year of progress and growth, I am pleased to share with you the exciting strides we've made in advancing our mission to preserve and promote the rich history of the Commonwealth. Your unwavering support and enthusiasm for history have been essential to our success, and we are deeply grateful for the trust and collaboration of our community, partners, and supporters.

Stewardship of Our State's History

This year, we have made significant improvements in our stewardship of the state's historical collections. We have upgraded facilities to ensure that our treasured artifacts, documents, and specimens are preserved for future generations. With state-of-the-art climate control and specialized care, our collections are better protected than ever before, allowing us to convey the stories that define our heritage.

New Exhibits and Expanded Public Engagement

Our commitment to making history captivating and accessible has led to the creation of new, dynamic exhibits and programs that bring Pennsylvania's past to life. These exhibits not only highlight key moments in our history but also encourage visitors to reflect on how those moments shape our lives today.

Digitization and Access to History

In our ongoing effort to ensure that history is accessible to all, we have accelerated the digitization of our collections. This year, tens of thousands of archival materials—including photographs, manuscripts, and maps—have been scanned and made available online. Likewise, our museum collections database continues to grow, and the record of Pennsylvania's historic resources

has expanded with our PA-SHARE website. These digital platforms are critical resources for researchers, educators, and history enthusiasts alike, making our state's history available to Pennsylvanians and others wherever they may be.

Improved Accessibility for All

In addition to digital access, we have worked to make our physical spaces more welcoming and accessible. New facilities for visitors with disabilities, expanded parking, and improved signage are just a few of the steps we've taken to ensure that everyone has an opportunity to engage with our shared history. We believe that history belongs to everyone, and these changes reflect our commitment to inclusivity.

Strengthening Community Support

We have been fortunate to see continued growth in community involvement. Local partnerships have blossomed, and our community outreach programs have attracted new audiences. Whether through school programs, local history collaborations, or volunteer opportunities, we are inspired by the growing enthusiasm for history in our communities. Your support has been integral to the success of these initiatives, and we look forward to working together in the years to come.

None of these accomplishments would have been possible without the dedication and zeal of our supporters—like you. Whether you've visited our museums or facilities, contributed to our programs, engaged with historic sites across the Commonwealth, volunteered your time, or simply spread the word about the importance of history, you've played a crucial role in advancing our mission.

Looking ahead, we are excited about the continued possibilities for preserving and sharing the history of our state. We are more committed than ever to ensuring that history remains relevant, accessible, and engaging for all.

With gratitude and warm regards,

A handwritten signature in dark ink that reads "Andrea W Lowery". The signature is fluid and cursive, with the first letters of each name being capitalized.

Andrea Lowery
Executive Director

The Pennsylvania State Archives

(PSA) protects more than 250 million significant historic, legal, and financial documents for use by state agencies and the public.

- Preserves documents ranging from William Penn's Charter of 1681 to the digital media of recent governors and vital records such as historic birth and death certificates.
- Makes these documents available to the public—researchers, genealogists, scholars—both in person and online.
- Operates the State Records Center, a cost-effective storage facility for the records of state agencies.
- Trains state agencies and local governments to safeguard and manage records.





2,894,799

*visitors welcomed
online and in-person*

PSA Moves Collections to New State-of-the-Art Building

In a move lasting 12½ weeks, from July to October 2023, PSA transported more than 88,500 archival containers, plus all map and drawing flat file drawers, from its former location within the Capitol Complex in Harrisburg to its new 145,000-square-foot facility at 1681 North Sixth Street. The entire move consisted of 4,105 large carts, skids, or cabinets of materials loaded onto 397 truckloads. In total, 69,500 cubic feet of records, plus another 850 flat file drawers of maps and architectural drawings were packaged up and delivered safely to compact mobile shelving in the new building. Archival supplies, staff office materials, and some furniture were moved on two separate days. The founding documents of Pennsylvania—including the four-page 1681 Pennsylvania Charter—were transported with police escort in late September from the former PSA storage vault to a biotech-secured vault in the new building.



Governor Opens the New State Archives at Ribbon-Cutting Ceremony

On December 8, 2023, Gov. Josh Shapiro formally cut the ribbon at the new Pennsylvania State Archives building. Several state officials and PSA partners were in attendance, and remarks were made by the Governor, Department of General Services Secretary Reggie McNeil, and PHMC Executive Director Andrea Lowery. On December 13, PSA opened the doors of the new building to the public for research and tours. Visitors used the public computers to research their own family histories with free access to Ancestry.com, viewed digital records and images not yet available online, interacted with Digital Gateway touch screens to see selected documents and videos, and browsed the library of books related to Pennsylvania history.

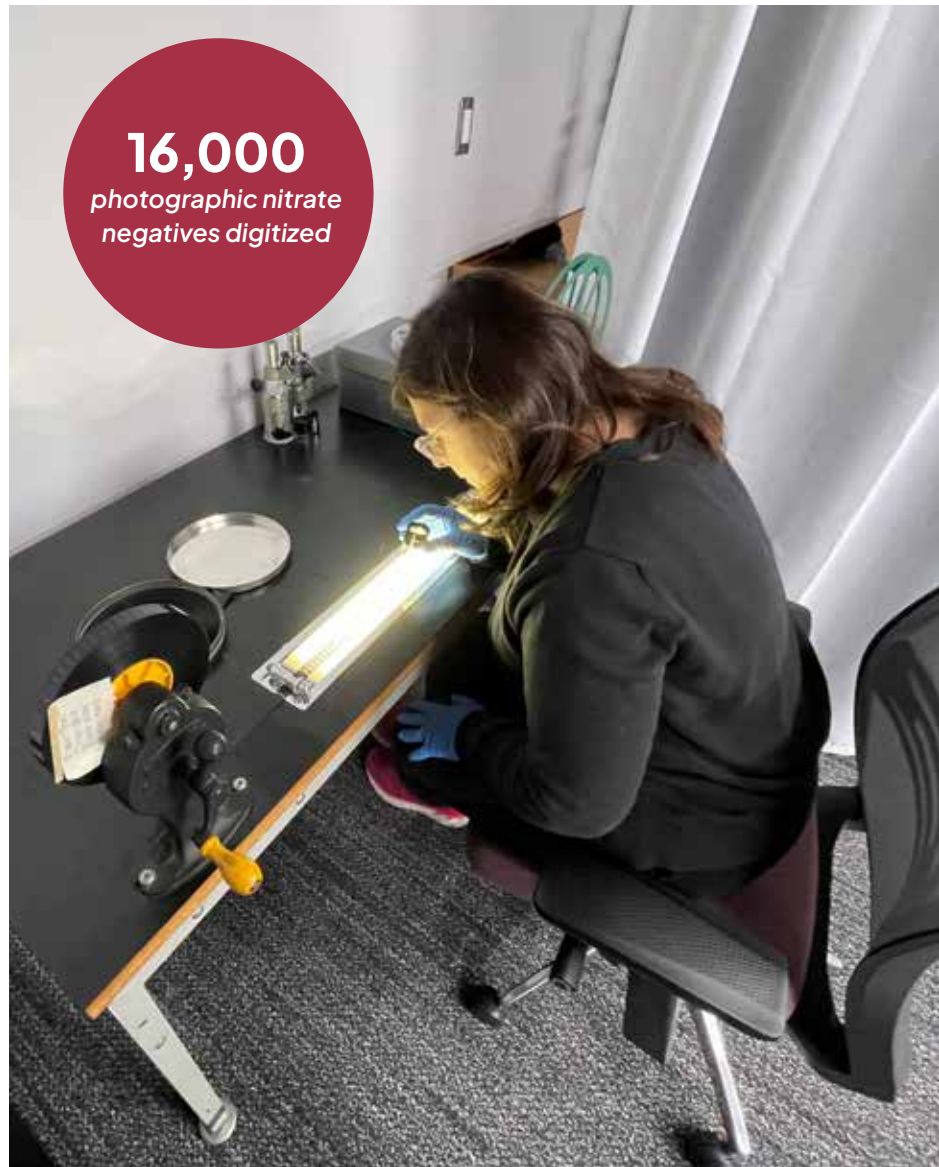
New Micro-Grant Enables Communities to Preserve and Share Their History

In 2023, PSA launched a new grant—the Empowered History Micro-Grant—continuing its support of community-based archives in Pennsylvania by offering up to \$1,000 to help with collecting, preserving, and sharing community history, particularly in cases where the grant can stimulate new or larger archival programming on the part of the recipients. The grant application process was designed to remove barriers that small community groups often face when applying for other larger archives grants. Funded by the National Historical Records & Publications Commission, the grant will award \$20,000 worth of grants to applicants. At the time of writing, the Empowered History Micro-Grant program had received 139 applications requesting a total of \$128,905. This was a much larger response than expected and an encouraging sign that there are many underserved communities across Pennsylvania that want to do more to preserve and share their history.



Accessibility to Film and Photo Collections Increases with Conservation and Digitization

PSA completed the final phase of its multiyear approach to digitizing all the motion picture films in its collection, concluding with the approximately 340 films being returned safely to PSA by the digitization vendor. The original films were also reboxed, with removal of harmful metal reels and cans and replacement with suitable materials. PSA continues to plan for increased access to the films in the new building, including making digital copies available in the PSA research room, with a selection online. Staff also concluded the inventorying, sorting, and digitizing of the remaining 16,000 photographic nitrate negatives in the collection. Because of the degradation of the originals and the inherent risk of combustion that nitrate negatives possess, PSA had chosen to reformat the bulk of the remaining negatives. A contract vendor digitized the materials and provided both preservation and access copies and duplicated all negatives onto new, stable, polyester-based film to replace the originals. After a comprehensive quality-control review of each digital image, PSA confirmed that the project was complete and approved the destruction of the harmful originals.



New System Will Preserve Digital Records and Make Them Accessible Forever

State records are increasingly being created and saved in electronic form. To ensure efficient care for these digital documents, PSA is currently designing a Digital Archives and Digital Records Center (DADRC). Once DADRC becomes functional, it will preserve the records in the cloud in multiple locations while constantly performing preservation actions on them. Documents will be monitored continuously to make sure that they maintain the integrity of their original creation, while accommodating software updates to ensure that they can be opened and read forever. With a launch date of early 2025, PSA will be breaking new ground as one of the first digital archives and the first digital records center in the nation.



The State Museum of Pennsylvania

is responsible for maintaining a collection of more than 12 million artifacts that tell the stories of Pennsylvania's natural and cultural history.

These are the largest collections in the Commonwealth focused exclusively on the heritage of Pennsylvania, covering the fields of history, art, archaeology, geology, paleontology, and natural history. Listed in the National Register of Historic Places, The State Museum building boasts nearly 160,000 square feet of exhibit space filled with both permanent and changing exhibits.





26,564
schoolchildren
and their teachers
visited

Education Programs Make PA History Accessible to Students and Families

Education and Outreach staff resumed annual programs and introduced some new ones in 2023-24 to meet the needs of the more than 26,564 schoolchildren and their teachers who visited The State Museum this year, as well as the many families and other groups who come to learn about Pennsylvania history, culture, and natural history. The annual monthly homeschooling program was expanded to give homeschooled children the opportunity to experience the museum's exhibits, participate in hands-on projects, and engage with museum staff. New family gallery tours were popular at the museum, making Pennsylvania content accessible to guests of all ages. For special events, the Giant PA Map was spread out in Memorial Hall for children to walk over while exploring Pennsylvania topics. Staff has also introduced Hands-on Rooms that give children another way to experience Pennsylvania's past by interacting directly with artifacts for educational enrichment.



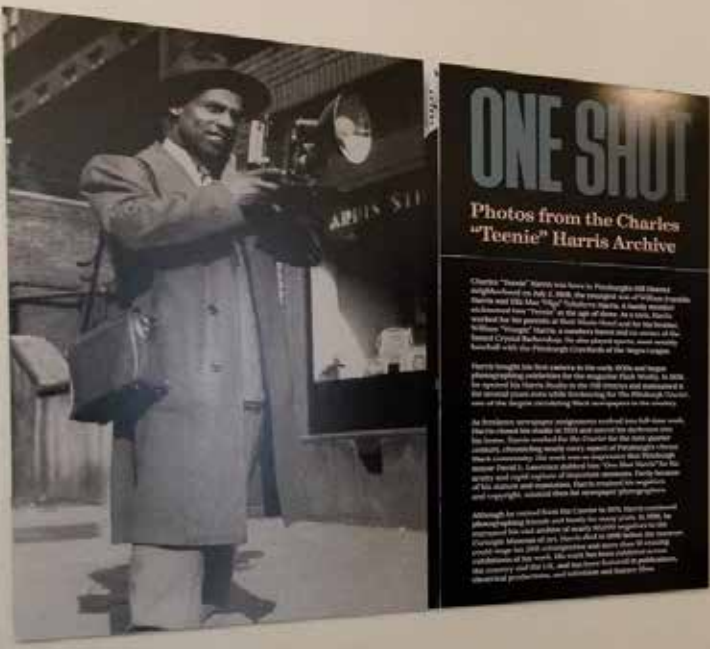
Art of the State Highlights Artistic Expression in Pennsylvania

Eighty-six works by 86 artists representing 29 Pennsylvania counties were featured at the 56th *Art of the State*, the annual juried art exhibition that has been held at The State Museum of Pennsylvania since 1968. In September 2023, at the exhibit's opening reception, artists received awards in five categories: craft, painting, sculpture, photography/digital media, and work on paper. The museum later chose two Purchase Awards for its collection. One selection, *Dowry Jars* by Kirsten Olson of Carlisle, Cumberland County, is three jars that feature designs inspired by historic Pennsylvania dowry chests of the 18th and 19th centuries, putting a modern lens on historic seed preservation and agricultural practices of the past. The other selection, *Winter Bouquet* by Joseph Opshinsky of Willow Grove, Montgomery County, is a cut paper collage that represents the artist's deep connection to Pennsylvania wildflowers and landscapes, capturing the vibrancy of the world around him.



Database in Development to Manage Archaeological Investigations in PA

Significant progress has been made in the development of a relational database system tailored specifically to The State Museum's Section of Archaeology, which manages and curates the collections resulting from state and federal archaeological investigations. At this stage, the data processes have been mapped and a state IT developer has been assigned to assist in constructing the application. This ongoing work is in collaboration with the museum's Collections Management division, the Pennsylvania State Historic Preservation Office, and PHMC's Bureau of Management Services.



State Museum Presents PA History and Art Exhibitions at Governor's Residence

The State Museum worked with the offices of Gov. Josh Shapiro and First Lady Lori Shapiro to mount three exhibitions at the Pennsylvania Governor's Residence this year. Opened in September 2023, *Franklin & Pennsylvania* featured portraits, written and printed documents, and an original Franklin stove to commemorate the 300th anniversary of Benjamin Franklin's arrival in Philadelphia. *One Shot*, installed at the Residence in January 2024, was an exhibition of photographs by Charles "Teenie" Harris, staff photographer for *The Pittsburgh Courier* who documented Black life in and around Pittsburgh in the mid-20th century. Mounted in April 2024, *A Common Canvas* presented a series of large-scale framed photographs of post office murals created in Pennsylvania by artists working under federal programs during the New Deal era. This ongoing collaboration offers the museum another venue for displaying significant objects and artworks from its collections, as well as those from other Pennsylvania institutions.

Ruggieri Retrospective Ushers in U.S. 250th Anniversary at The State Museum

As an early effort in the commemoration of the 250th anniversary of American independence and Pennsylvania's keystone place in the founding of the nation, The State Museum mounted a retrospective exhibition, *Pennsylvania in Watercolor*, featuring selections from Harrisburg artist Nick Ruggieri's series of watercolor landscapes created half a century ago for the U.S. Bicentennial. In the early 1970s, the Harrisburg *Patriot-News* commissioned Ruggieri to create the series to celebrate Pennsylvania places. Over the course of the project, the artist visited all 67 counties to paint a scene he believed to be representative of each one—typically a historic site, a natural feature, or a signature industry. Opened in March 2024, *Pennsylvania in Watercolor* was the largest retrospective of Ruggieri's work since the original 1975 exhibition of the series at the museum.



Bureau of Historic Sites & Museums

The Bureau of Historic Sites & Museums preserves and interprets 23 historic sites and museums across the Commonwealth that together tell the story of Pennsylvania.

Known as the Pennsylvania Trails of History, these sites include battlefields, historic houses, and religious settlements, as well as theme museums focused on Pennsylvania's nationally significant role in the key industries of lumber, coal, oil, agriculture, and railroads. Although rooted in history, these museums interpret themes in relevant and contemporary ways, hosting citizenship ceremonies, highlighting the Commonwealth's traditions of immigration and tolerance, and celebrating the state's social, cultural, and economic diversity.





43

*New United States
Citizens Celebrated*

43 People Become U. S. Citizens at Pennsbury Manor

PHMC's historic sites and museums inform community identity through shared history, providing space for significant community activities. On July 20, Pennsbury Manor, site of the reconstructed 17th-century estate of Pennsylvania founder and first proprietor William Penn, hosted a naturalization ceremony, in which 43 people from 26 different countries swore their oath of allegiance to the United States and celebrated the completion of the citizenship process with family and friends. Located near Morrisville, Bucks County, Pennsbury Manor serves as an appropriate venue for the event, as it memorializes Penn's experiment in establishing a community of immigrants who were free to own property and practice their respective faiths.

Donations Enhance Collections at Railroad Museum and Lumber Museum

Collections development and proper stewardship of historic artifacts, archival materials, buildings, structures, and landscapes placed in PHMC's trust are integral to its mission. This year, PHMC's historic sites and museums have been fortunate to receive several significant donations. Conrail gifted an 1838 Philadelphia & Reading Railroad locomotive, the *Rocket*, to PHMC's Railroad Museum of Pennsylvania in Strasburg, Lancaster County. The *Rocket* was the first of eight locomotives made by London-based Braithwaite, Milner & Co. for the P&R from 1838 to 1841. It is the only one of the eight that survives today and the oldest Reading Railroad locomotive in existence. The *Rocket* was built for use at the opening of the line between Reading and Pottstown, and it served the railroad until 1879, when it was retired after traveling a total of 310,164 miles.

Also, the Pennsylvania Lumber Museum received a donation from the London Grove Friends Meeting of a large "tree cookie" sawn from a 350-year-old white oak (*Quercus alba*) that had collapsed in September 2023 on the grounds of the Friends' Chester County meetinghouse. The Lumber Museum is using the tree cookie to interpret the topic of specimen trees in Pennsylvania—something that had not been included previously in the site's permanent exhibition.

Partnerships Support History and Community Service

Partnerships are essential for Pennsylvania Trails of History sites, not only to support programs related to the preservation and interpretation of Pennsylvania history but also to provide community service in areas related to that history. In March, the Pennsylvania Military Museum held a special event in partnership with the U.S. Army's Sisters in Arms, a mentorship program through which women veterans and servicemembers empower each other in successful leadership, education, training, and mentoring. The event, attended by more than 60 women, focused on all facets of women's health and provided attendees with access to women's health professionals.

Also this year, Old Economy Village in Ambridge, Beaver County, developed a new partnership with A Few Bad Apples, a local nonprofit organization that uses unwanted fruit for sustainable cider making. The organizations work together to cultivate the site's excess fruit and develop new programming around the history of Harmonist cider making.





Ephrata Cloister Recognized for High Standards with AAM Accreditation

PHMC's historic sites strive to be leaders in the history and museum fields by being accountable to nationally recognized professional standards. The American Alliance of Museums (AAM) grants accreditation to sites for their demonstrated excellence in education, public service, collections stewardship, and commitment to continued institutional improvement. This year, Ephrata Cloister in Ephrata, Lancaster County, has been awarded subsequent accreditation by AAM. This is the site's fourth time receiving this recognition, an honor held by only 202 other museums in the country. The site, which attracts wide visitation, preserves the home of a unique 18th-century religious community known for its original music and fraktur, distinctive architecture, prolific publishing center, and lifestyle of discipline and self-deprivation.



Photo Exhibition Connects Visitors to Anthracite Region Heritage

Exhibitions are one way that Trails of History sites welcome visitors and help them to make meaningful connections with Pennsylvania's rich and multifaceted history. This year, the Anthracite Heritage Museum in Scranton, Lackawanna County, opened *The Anthracite Family Album*, showcasing 50 years of the photodocumentary work of Scott Herring, a descendant of seven generations of anthracite miners. The exhibition, which includes more than 1,250 images on 83 exhibit panels, captures the industry in recent years, the multigenerational workplace, and the occupational and community pride of the region's inhabitants. Subthemes include anthracite mining and railroading activities, deep mining families and communities, the region's efforts to preserve and promote its culture through historic and community events, and the greater impact the industry has within the country today.

The Pennsylvania State Historic Preservation Office

(PA SHPO) supports efforts across the Commonwealth to incorporate historic places in the planning and development of vibrant, sustainable, forward-looking communities.

Under the National Historic Preservation Act and the Pennsylvania History Code, PA SHPO partners with state agencies, developers, local governments, and citizens to review thousands of state and federal projects annually, ensuring that significant historic and archaeological resources are incorporated within project planning.

PROGRAM AREAS:

- Supervising planning and construction grants for the continued use of historic properties
- Managing state and federal tax credit programs for the rehabilitation of historic buildings
- Maintaining a publicly searchable database of historic and archaeological resources
- Delivering survey programs for historic and archaeological sites
- Administering the National Register of Historic Places, Certified Local Government, and Pennsylvania Historical Marker programs
- Reaching out to local communities and partners through the Community Preservation program and statewide historic preservation plan





Section 106 Mitigation Preserves Public Art

This year, 28 abstract sculptural mosaic panels by Virgil Cantini, a significant multimedia artist of the mid-20th century, were installed in Pittsburgh Regional Transit's Steel Plaza Station. This was the successful result of a process that began in 2018, when PA SHPO participated in a consultation for a highway project connecting portions of downtown Pittsburgh that would require the removal of a pedestrian tunnel containing the Cantini artwork. In accordance with Section 106 of the National Historic Preservation Act, PA SHPO's environmental review staff advise and assist federal and state agencies in determining if their projects will impact significant historic resources and, if so, how to mitigate the effects. In this case, it was determined that a tunnel was essential to Cantini's vision, so PA SHPO and other preservation partners identified a pedestrian corridor that closely adhered to the dimensions of the original tunnel and facilitated the reinstallation of the artwork there, where it is again on view to the public.

Community Initiative Awards Recognize Preservation Successes

Each May, PA SHPO announces the winners of its annual Community Initiative Awards to recognize the hard work and dedication of outstanding organizations, municipalities, agencies, and individuals that advance and expand the definition of historic preservation in Pennsylvania.

This year's awards went to:

Lower Makefield Township Historical Commission in Bucks County for its efforts to preserve the community's 1690 Slate Hill Cemetery

Nicholson Heritage Association in Wyoming County for its rehabilitation of the 1849 Nicholson Train Station as the area's new visitor center

The Chisolm family for renovating and reopening The Fallon, an 1854 hotel in Lock Haven, Clinton County

Windfall Rod Shop for rehabilitating the Titusville Iron Works in Crawford County into a multipurpose community gathering spot with a restaurant, museum, and event venue



Slate Hill Cemetary
Bucks County



1849 Nicholson Train Station
Wyoming County

Courtesy of Powers & Company



The Fallon
Clinton County



Titusville Iron Works
Crawford County

PA SHPO Supports Preservation Planning in Erie with Keystone Grant

Historic preservation is most effective in places where it is fostered and managed at the community level. To help municipalities and local organizations in this process, PA SHPO offers technical assistance, advice, and educational programs on a variety of planning and revitalization strategies and initiatives, as well as support through Keystone Historic Preservation Planning Grants. This year the City of Erie received a planning grant of \$24,612.50 to hire a historic preservation consultant to specifically develop a three-year plan for its newly formed historic preservation program. The grant money was allocated for expenses directly tied to the development and publication of the *City of Erie Historic Preservation Plan*, which included kick-off meetings, data and information collection, data analyses and mapping, and project website updates. The project website, published and maintained by the consultant, provided an online platform for the public to both reference and actively use for input and dialogue.



National Register Drives Support for Preservation in PA's Communities

The Hosanna African Union Methodist Protestant Church, built in 1843, is located at Lincoln University in Upper Oxford Township, Chester County. In the early 19th century, the church was the spiritual center of Hinsonville, a free Black agricultural community. The church served not only as a house of worship but also as a gathering place for leaders in the abolitionist movement. The church's significance is also bound to the founding of the Ashmun Institute in 1857, later Lincoln University, the first degree-granting Black college in the U.S. The church was recently listed in the National Register of Historic Places, a federal program that is managed in Pennsylvania by PA SHPO. Listing in the National Register has many benefits, such as eligibility for historic tax credits and Keystone Historic Preservation grants; it also often changes the way communities perceive their historic places, giving credibility to efforts to preserve them as irreplaceable parts of the community's identity.



Courtesy of Suzanna Barucco, sbk + partners, LLC

Tax Credits Provide Incentives for Rehabilitation, Energizing Local Economies

In 2019 rehabilitation work began on the Delaware Station of the Philadelphia Electric Co., a massive five-story, reinforced concrete building, using the federal Rehabilitation Investment Tax Credit and the Pennsylvania Historic Preservation Incentive Tax Credit as part of the project's \$225 million funding. Federal and state tax credits are incentive programs administered by PA SHPO. The programs encourage owners of certified historic buildings to invest in rehabilitating their properties for the purpose of bolstering economic development for communities through tourism, job creation, and income for local businesses. The work on Delaware Station was completed in December 2023 and the building is now The Battery Philadelphia, a 500,000-square-foot complex that includes 186 residential apartments, offices, recreational areas, event spaces, hotel rooms, and retail stores.



Bureau of Management Services

supports the overall operation of PHMC through its divisions of Architecture & Preservation, Marketing & Media, Fiscal & Office Support Services, and General Operations.

Architecture & Preservation

Manages facility planning, architectural and engineering design, and construction projects for all PHMC facilities. Active Capital projects in the last year included overseeing the following in various stages of design: construction of a roundhouse at the Railroad Museum of Pennsylvania and upgrades at Conrad Weiser Homestead, Daniel Boone Homestead, Erie Maritime Museum, Landis Valley Village & Farm Museum, Pennsylvania Military Museum, and The State Museum of Pennsylvania. The division also managed approximately \$3.2 million in Keystone Recreation, Park & Conservation Fund-supported projects at PHMC historic sites and museums.

Fiscal & Office Support Services

Responsible for PHMC's more than \$53 million overall budget, including federal, state, and private funding sources. The division leads all PHMC's purchasing, contracting, revenue sourcing, corporate/purchasing credit card utilization, and commerce transactions and oversees all requests for proposal and procurement processes for acquisition of goods and services. The division utilizes SAP (the Commonwealth's accounting system), e-Grants, and a variety of other information and financial management systems to provide support services dedicated to the entire agency.

General Operations

Directs the agency's information technology (IT) functions and manages the preparation of the agency's IT Strategic Plan ranging from SharePoint administration to managing large-scale projects like the Ticketing, Events, and Membership Management System (TEMMS) across all sites and museums. Assists PHMC on human resource planning, recruitment, and workplace health and safety procedures. Assists with agency project management, continuous improvement initiatives, and conducting management and personnel studies or surveys to improve or create administrative methods and practices.

Marketing & Media

Supports PHMC through media relations, graphic design, photography, web administration, social media, and the publication of PHMC's quarterly magazine, *Pennsylvania Heritage*. Through social media this year, PHMC programs reached 93,665 followers on Facebook and 15,140 followers across other channels. *Pennsylvania Heritage* celebrated its 50th year of publication and ran features on Revolutionary War civic leader Esther DeBerdt Reed, sailmaker James Forten and the struggle for Black rights in the early 19th century, Thomas Mosley and the first Black Marines in World War II, the Donora Smog, and the recovery of the bald eagle. The *Pennsylvania Heritage* website received 97,666 views and 55,033 visitors in 2023-24.





BUDGET

FISCAL YEAR
2023-2024

STATE FUNDS	APPROPRIATED
General Government Operations	\$22,417,000
Cultural and Historical Support Grants	\$2,000,000
OTHER FUNDS	
Keystone Recreation, Parks & Conservation Fund	\$14,418,000
RESTRICTED REVENUES	
Historical Preservation Fund	\$3,759,695
Mitigation Funds	\$1,827,041
Rents and Other Income Fund	\$339,204
Deaccession Fund	\$312,446
Trusts	\$304,342
FEDERAL FUNDS	
Historic Preservation (NPS)	\$1,514,473
All Other Federal Funds	\$6,709,000
TOTAL BUDGET	\$53,601,203

GRANTS AWARDED	
Planning and Construction Grants	\$2,000,000
Cultural and Historical Support Grants	\$1,900,000
Certified Local Government Grants	\$151,447
TOTAL GRANTS	\$4,051,447

EMPLOYEES

218

The Pennsylvania Heritage Foundation

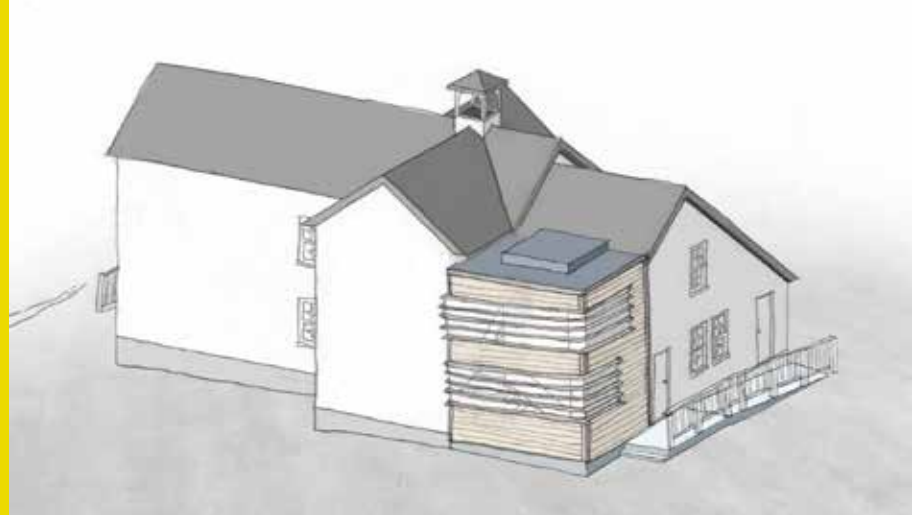
The Pennsylvania Heritage Foundation (PHF) is the nonprofit partner of the Pennsylvania Historical & Museum Commission.

Governed by a volunteer board, PHF helps preserve the Commonwealth's rich heritage through charitable funding, membership, grant management, and community engagement.



Sip & Savor

PHF's annual Sip & Savor fundraising event is gaining momentum. Celebrating its third year, PHF traveled to The Winery at Hunters Valley on the west bank of the Susquehanna River. The day included wine tastings, farm-to-table foods, and handcrafted chocolate confections. New this year, a local musician entertained guests as they mingled and bid on an array of silent auction items donated by the Board of Directors and local companies. This event highlighted PHF's work in partnership with PHMC's mission to discover, protect, and share Pennsylvania's past.



Eckley Miners' Village

PHF has been assisting Eckley Miners' Village with fundraising efforts for a new research center and overnight lodging. The site has been awarded a \$48,400 matching grant from the National Endowment for the Humanities to design a place-based, interdisciplinary research center and overnight lodging in two of the village's 19th-century houses. The project is part of an initiative to preserve several of Eckley's historic structures by selectively adapting them for contemporary uses. Beyond that role, the lodging is envisioned as a prototype for a revenue model replicable in other historic homes. Improved research facilities will benefit Eckley's exhibits and programs by fostering innovative thinking about the anthracite region's cultural and environmental legacies, strengthening the museum's relationships with nearby educational institutions, and involving current and future generations of students in the preservation and study of northeastern Pennsylvania's important heritage.

Scholarships

PHF launched a new program to support and encourage interest in Pennsylvania history for upcoming generations. Scholarships were open to high school seniors or college undergraduates enrolled in a two-year or four-year Pennsylvania college majoring in history. Winners were chosen from essays submitted on a person, location, or event in Pennsylvania history that they felt was underrecognized. Funded in part through the Volunteer Program at Hersheypark, three awards were granted. \$1,000 was awarded to Rachel Legore of Biglerville, for her essay "Elizabeth Thorn: The Angel of Gettysburg," and two prizes of \$500 each went to Allison Dobrinska and Sarah B. Oberholtzer.

Board of Directors

Donna L. Fisher, *President*
Mark A. Markosky, *Vice President*
Demielo C. Luckette, *Secretary*
Cynthia Pritchard, *Treasurer*
Mary Zanolini, *Assistant Treasurer*
Samantha G. Freise
C. James Holliman
Glenn N. Holliman
Tucker R. Hull

Christopher W. Kinder
Nancy A. Lennington
William V. Lewis Jr.
George L. Lyter
Jim Newman
Laura C. Ricketts
Susan Sherwood
Anne J. Yellott
Franklin L. Kury, *Emeritus*
Frederick C. Powell, *Emeritus*

Staff

Sam Sweet, *Executive Director*
Jodie Dodson, *Development & Membership Coordinator*



DONORS

\$1,000 and above

CAN Do Community Foundation
Donna Fisher and Thomas Schmidt
Freeland Anthracite
Richard Habermann
Thomas Hagen
Barabara and Glenn Holliman
Luzerne County Convention & Visitors Bureau
Pasco L. Schiavo Memorial Charitable Fund of
The Luzerne Foundation
Markosky Engineering Group, Inc.
Joyce and Mark Markosky
Becky and Fred Powell
PPL Corporation
Society for Mining, Metallurgy & Exploration,
Penn-Anthracite Section
Sordoni Family Foundation
Willary Foundation
Dr. Alvin and Mary Zamba
Mary and Eric Zanolini

\$500-\$999

Blaschak Anthracite
Carole and Darr Briggs
W.M. Kanyuck
Nancy and Ken Lennington
Thomas Little
Demielo Luckette
Carrie and George Lyter
Marilyn and Blake Marles
William Murphey
Dr. William and Judy Murphy Jr.
Mary Clare Zales and Lawrence Williamson

\$1-\$499

Anonymous (20)
Anne and Chris Acker
Jane and Michael Adams
Kim Andrews and David Friedman
Sherman Aronson
Anne and David Atkinson

Ken Bachman
Robert B. Barton Jr.
Susan and Kenneth Basalik
Shirley and David Beal
Mary and Thomas Beazley
Donna and Martin Beech
Susan and Dorrance Belin
Sarah and Jason Bell
Emily Bittenbender-Henry
Nancy Bleil
Donna and John Boland
Austin Bowles
O.W. Bowman Jr.
Kathleen Boykin
Cheryl and Jim Brenner
Bretheren Village Green Thumb Society
Sandra and David Bright
Dr. John Brion Jr.
Barclay Brooks
Susan and Eric Brosius
Linda Brubaker
Carol and John Brunner
John Burke
Carol Buskirk
Susan Cagley
Mary and Carl Campbell
Victor Campbell
John Capozzolo
Marshia and Peter Carlino
Yvonne and David Carmicheal
Donna and Charles Cashdollar
Kathleen and Joseph Caufield
Lewis M. Chere
Cieri Family
Dr. Thomas Ciotola
Gwyn and Steven Clark
Kathleen and Hayes Clark
Patty Clendennen
Hannah S. and Samuel A. Cohn
Memorial Foundation
Joan Cole

Dr. Ronald and Kathryn Conard
Coolspring Power Museum
William D. Cooper
Linda B. Davidson
Dr. Edward and Claire Davis
Sylvia De Lozier
MaryEllen and Robert Desmond
Glenn Detrick
Suzanne Detweiler
Elaine and Robert Deutsch
Thomas J. Diedrich
Susan and Norman Dieffenbach
Jeanne and Anthony DiFrancesco
Dallas Dollase
Elizabeth and Paul Dombrosky
Martha Donahue
Dr. Joseph and Emily Drabick
Jack L. Dundore
June and Charles Dunn
George Earle
Marilyn and Albert Eelman
Linda and Alan Eickhoff
Eileen and Michael Emanuel
David Engle
Isabel Epstein
Susan Etter and Robert Knuff
Candee and Richard Evelhoch
Thomas Falatko
Fallingwater
James Fiedler
Marc Finer
Polly Fino
First National Bank Museum
Lori and Eric Fischer
Ross Flint
Richard Folmer
Patricia and Richard Foltz
Friends of Fort Halifax Park
James Foster
Laura Fox
Barbara Franco

Lurene and John Frantz
 Cheryle and Charles Frederick
 Anne Gale
 Pat Gallaher
 Janice Garner
 Kathy and James Gates
 Matthew Gaydos
 Fay K. Geegee
 George Gehr
 Todd Gilcrist
 Dr. Brent Glass
 Elizabeth and William Gorman III
 Kellie Gormly
 Ruth Granfors and Gene Weinberg
 Dr. Henry and Patricia Greenawald
 William H. Greer
 Patricia and Kenneth Grubb
 Dr. Karen Guenther
 Judith Guise
 Nan Gutterman
 Gwin, Dobson & Forman Inc.
 Ronald Haas
 Alan Hackenberg
 Edward Haffy
 Marya and John Halderman
 Susan and John Hansen-Flaschen
 Mark Hansler
 Susan and Ken Harrison
 Julie and Craig Hartman
 Gail Hauptfuhrer
 Ann and David Hawk
 Thomas and Donnis Headley Charitable
 Fund
 Lee S. Heffner
 Paula Heiman
 Sandra and Theodore Heisey
 Fred Hemmerich
 C.V. Henry III
 Mary and David Hess
 Elaine Hickman
 Thomas A. Hill
 Robert Hilterman
 Ronald Hoess
 Ann and David Hohe
 Carolyn and Jerry Holleran
 Dr. C. James and Karen Holliman
 William Honaman
 John Horn
 Joyce L. Horst
 Kathleen and Paul Horwatt
 Clarence Hower Jr.
 Hanneli and Michael Hudock
 Kandice and Tucker Hull
 Linda and Stephen Ingram
 Cynthia Inkrote
 Dr. Richard and Suzanne Jeffries
 Jacque and Norman Jones
 Russell A. Jones Jr. and Family
 Annette and Edward Kaier
 Ruth and Vladimir Karabcievsky
 Ernest Kepner
 Constance Killian
 Patricia and Edwin Kindig
 Patti and Steve Kirkpatrick
 Janet Klein
 Susan Knaub
 Helen and Hargis Knoechel
 Ms. Kay E Knupp
 Susan and David Kostelnik
 Linda and David Kutz
 Suzanne Lamborn
 J. Richard Lauver
 Ellen and Thomas Lawler
 Judge Hannah Leavitt and John Krill Jr.
 Katherine and Walter Ledzinski
 Robert Legnini
 Pat Leiendecker
 Holly and Shawn Leppo
 Dr. William V. Lewis Jr.
 Dr. Kenneth and Daren Lilik
 Rev. Donald and Kathleen Lindman
 Mark Listemann
 Amy and Mike Long
 Diane Long
 Michael Lopez Jr.
 John Lotka
 Andrea Lowery
 Anne Lowry and William J. Knox Jr.
 Anne and Joel Lubenau
 Jason Lutcavage
 Connie R. MacDonald
 Dan Macey and Paul Savidge
 John Marderness
 Cheryl Martin
 John Martine
 William K. Martz
 Dr. Andrew and Deborah Masich
 Candace and Andrew Masson
 Martha and Richard Masson
 Mauch Chunk Trust
 Donna Maxwell
 Dale Louise McCarter and Roger Braun
 Dr. Linda and Thomas McCurdy
 Adam R. McDonough
 Barbara and Clyde McGearry
 John McGeehin
 Joanne and Manus McHugh
 Dusty and J. Paul McMillen
 Gerianne Medash
 Cynthia Mendelson
 Jane and Mark Mendlow
 Karen and Mark Methlie
 Joan and Charles Miller
 Marion Piersol-Miller and Glenn Miller
 Randall M. Miller
 Harold Mitchener
 Jeremy Mollison
 Bernard Moore
 Joan and James Moore
 Ann and John Moran
 James Morefield
 Rebekah and Thomas Morse
 Nancy Moses and Myron Bloom
 J. Ronald Mowery
 Heidi and Kevin Myers
 Nancy and Franklin Myers III
 Christopher Nardo
 Barbara Nell
 Anne and Jim Newman
 Newtown Historic Association
 Lisa Niescier
 Barbara and C. Michael Noble II
 Michael Norris and Matt Varrato
 Mary Ann Ober
 Joan and Connell O'Brien
 Patrick O'Connor
 Deborah and Mark Osevala
 Laura and John Otterstrom
 Kathy Ottinger
 Alice and Lawrence Owens
 PA Chapter Palatines to America
 Kathy Pape and Bob Trinkle
 Anita and Eric Parker
 Christine and Curtis Patterson
 Patricia and William Patterson
 Deborah Peikes and Robert Cohen
 Steven Peitzman
 Fred Pennesi
 Dale Kathleen Perry
 James Pflugh
 Claudia and Lloyd Pickell
 Dr. Preston Pierce
 Ellen and Carl Pike
 Suzanne Pilon
 Cora and Joseph Pinhak
 PNC Bank
 Raymond Poshkus
 Cynthia Pritchard
 Carol and Eric Pritt
 James Pruchnic
 Charles Pursel
 Daniel Recla
 Gordon Reed
 Denis Reeser
 Brenda Reigle
 Susan and John Reigle
 Mary and Ted Richards
 Rita and Dale Ritter
 Rebecca Roberts
 Stephen R. Roberts
 William F. Roberts Jr.
 Nicholas Rodia
 Ellen Roesener
 Margaret Rogers
 Stephanie and Nicholas Rohrbaugh
 Dr. Charles and Mary Rost
 Elizabeth Rottschaefter
 Floyd D. Ruhl
 Janet and Lee Rupert
 Stephen V. Russell
 Mary Lou Ruttler
 Andrew Saul
 Wendy Schaenen and Anand Jagannath

Richard P. Schaumburg
Theresa and Edward Schroth
Judy Schwank
H. Semple Jr.
William Shakely
Carl Shankweiler
Pamela and Keith Shenberger
Rev. William and Catherine Sherman
Janice and Thomas Showler
Thomas Shuey
Craig Siegfried
Donald Sloteman
Stephen Smalley
Robert H. Smith
Regina Smith
Scott Smith
Mary Soderberg
Paul Sperry
Aislinn and David Staaby
R. Scott Steele
Eugene Steffey
Anna and Jerry Stewart
Nikki Stewart
Donna and Edward Stockton
Kathy and James Stover
Dr. C. Vaughn Strimlan

Marilyn and Thomas Sweeney
Sam Sweet
Barbara and Ernie Thrasher
Karen and David Troxler
Emily and Benjamin Uleau
Mary and Charles Ulmann
Sandra Ulsh
Stefanie Valar and Edward Hauck
Loretta and Walter Van Nuys
Rachel and Evan Van Orden
Sara and Norman Van Why
George Vanderbilt
Stacie and William Vodra
Aaron Vogt
Richard Wade
Pauline and Carroll Wagner
Anne Wain
Frances W. Waite
Col. Raymond T. and JoAnn Waity
Ray A. Waldren
Christine and Bruce Walter
Lori Waser and Richard Moore
Torry Watkins
Ken Weinstein
David Weller and Thomas Bovenzi
Dr. Andre Weltman

Ernest W. Werstler Jr.
Dr. Jim and Karen Wetzler
Alma and James Whipple
Margaret M. Whittaker
Megan and Donald Wieand
Eugene Wile
Keith Will
Patricia and Mark Williams
Philip Williams
Ronald A. Witman
Elizabeth Wolfe
Janet Wolgemuth
Janet Wood
Tom Woodward
Kathleen Wunderly
Michael Yavor
Andrew B. Yehl Sr.
Anne J. Yellott
Charles Young
Diane and Craig Zabel
Robert Zenzinger
W. J. Zimmer
Dr. Philip D. Zimmerman and Louise L.
Stevenson
Dr. Paul and Susan Zubritzky

To Our Donors

Your care and commitment enables our history to be preserved, studied, and shared. Your thoughtfulness and generosity ensures that we can understand our past so that we can add meaning to our future. We are very grateful for all that you make possible.



Joseph Priestley House

PHMC Historic Sites and Museums

Administered Sites and Partners

Anthracite Heritage Museum & Scranton Iron Furnaces
Anthracite Heritage Museum and Iron Furnaces Associates

Brandywine Battlefield Park
Brandywine Battlefield Park Associates

Cornwall Iron Furnace
Friends of Cornwall Iron Furnace

Drake Well Museum & Park
Friends of Drake Well Inc.

Eckley Miners' Village
Eckley Miners' Village Associates

Ephrata Cloister
Ephrata Cloister Associates

Erie Maritime Museum & U.S. Brig Niagara
Flagship Niagara League

Landis Valley Village & Farm Museum
Landis Valley Associates

Old Economy Village
Friends of Old Economy Village

Pennsbury Manor
The Pennsbury Society

Pennsylvania Lumber Museum
Pennsylvania Lumber Museum Associates

Pennsylvania Military Museum
Friends of the Pennsylvania Military Museum

Railroad Museum of Pennsylvania
Friends of the Railroad Museum

Partner Properties

Bushy Run Battlefield
Bushy Run Battlefield Heritage Society

Conrad Weiser Homestead
Friends of Conrad Weiser Homestead

Daniel Boone Homestead
Daniel Boone Homestead Associates

Fort Pitt
Heinz History Center

Graeme Park
Friends of Graeme Park

Hope Lodge
Friends of Hope Lodge

Joseph Priestley House
Friends of Joseph Priestley House

Somerset Historical Center
Historical & Genealogical Society of Somerset County

Community-Managed Properties

Curtin Village
Roland Curtin Foundation

Peace Church
Friends of Peace Church



Painter's Folly

National Register of Historic Places

Allegheny County

Mt. Alvernia Historic District, Shaler and Millvale

Chester County

Hosanna Church and Cemetery, Upper Oxford Township

Crawford County

William and Elisabeth Edwards House, Spartanburg

Dauphin County

Zembo Shrine, Harrisburg

Delaware County

Painter's Folly, Chadds Ford

Franklin County

Broad Street School, Chambersburg

Lebanon County

Schaefferstown Historic District, Schaefferstown

Lehigh County

Nineteenth Street Theatre, Allentown

Luzerne County

Bell Telephone Co. of Pennsylvania,
Wilkes-Barre Central Office

Mifflin County

Juniata Terrace Historic District, Juniata Terrace

Northampton County

Bath Crossroads Historic District, Bath

Philadelphia County

Fairelawn
First Baptist Church of Germantown
Margaret Esherick House
Pringle Electrical Manufacturing Company Building
Windsor Manufacturing Company

Schuylkill County

Fighter's Heaven, Orwigsburg

GRANTS

Certified Local Government

	Amount
Allegheny County	
City of Pittsburgh	\$25,000
Beaver County	
Borough of Ambridge	\$25,000
Bucks County	
Lower Makefield Township	\$25,000
Chester County	
Tredyffrin Township	\$20,000
Lancaster County	
Borough of Columbia	\$25,000
Lehigh County	
City of Allentown	\$25,000
York County	
City of York	\$13,500
TOTAL	\$158,500

Cultural and Historical Support

	Amount
Adams County	
Adams County Historical Society	\$4,000
Gettysburg Foundation	\$4,000
Seminary Ridge Historic Preservation Foundation	\$7,132
Allegheny County	
Carnegie Science Center	\$44,945
Carnegie Museum of Natural History	\$44,945
Children's Museum of Pittsburgh	\$44,945
Frick Art & Historical Center	\$44,945
Historical Society of Western Pennsylvania d/b/a Sen. John Heinz History Center	\$44,945

Holocaust Center of Pittsburgh	\$10,085
Rivers of Steel Heritage Corporation	\$38,571
Soldiers & Sailors Memorial Hall & Museum	\$23,815
Armstrong County	
Armstrong County Historical Museum & Genealogical Society	\$4,000
Beaver County	
Beaver County Historical Research & Landmarks Foundation	\$4,000
Bedford County	
Bedford County Historical Society	\$4,000
Old Bedford Village Inc.	\$4,000
Berks County	
Berks History Center	\$8,902
Boyertown Museum of Historic Vehicles	\$8,132
Colebrookdale Railroad Preservation Trust	\$20,702
Foundation for the Reading Public Museum	\$19,159
General Carl Spaatz Regional USAAC Museum	\$4,000
Blair County	
Blair County Historical Society	\$4,000
Railroaders Memorial Museum	\$5,750
Bradford County	
Bradford County Historical Society	\$4,000
Bucks County	
Bucks County Children's Museum	\$5,638
Bucks County Historical Society	\$38,502
Fort Mifflin on the Delaware	\$4,000
Pearl S. Buck International	\$10,938
Trustees of the Mercer Fonthill Museum	\$8,266
Butler County	
Butler County Historical Society	\$4,000
Historic Harmony Inc.	\$4,000
Cambria County	
Cambria County Historical Society	\$4,000
Johnstown Area Heritage Association	\$11,000
Cameron County	
Cameron County Historical Society	\$4,000
Centre County	
Centre County Historical Society	\$4,000
Discovery Space of Central PA	\$14,544

Chester County

American Helicopter Museum & Education Center	\$5,724
Chester County History Center	\$20,305
Graystone Society Inc.	\$7,358
Historic Yellow Springs	\$14,471

Clearfield County

Clearfield County Historical Society	\$4,000
--------------------------------------	---------

Clinton County

Clinton County Historical Society	\$4,000
-----------------------------------	---------

Columbia County

Berwick Historical Society	\$4,000
The Children's Museum Inc.	\$4,200

Crawford County

Crawford County Historical Society	\$4,000
------------------------------------	---------

Cumberland County

Cumberland County Historical Society	\$9,681
--------------------------------------	---------

Dauphin County

AACA Museum Inc.	\$17,688
Hershey History Center	\$4,000
Historical Society of Dauphin County	\$4,000
The Hershey Story Museum	\$23,904
The National Civil War Museum	\$16,240
Whitaker Center for Science and the Arts	\$44,440

Delaware County

Colonial Pennsylvania Plantation	\$4,000
Delaware County Historical Society	\$4,000
Nicholas Newlin Foundation	\$10,539

Elk County

Elk County Historical Society	\$4,000
-------------------------------	---------

Erie County

Erie County Historical Society d/b/a Hagen History Center	\$16,676
expERIEnce Children's Museum	\$10,235

Fayette County

Fallingwater/WPC	\$44,945
Fayette County Historical Society	\$4,000

Franklin County

Conococheague Institute for the Study of Cultural Heritage	\$4,000
Franklin County Historical Society – Kittochtinny	\$4,000

Fulton County	
Fulton County Historical Society	\$4,000
Huntingdon County	
Huntingdon County Historical Society	\$4,000
Isett Acres Museum Foundation	\$4,000
Indiana County	
Historical & Genealogical Society of Indiana County	\$4,000
Jefferson County	
Jefferson County Historical Society	\$4,000
Punxsutawney Weather Discovery Center	\$4,000
Juniata County	
Juniata County Historical Society	\$4,000
Lackawanna County	
Lackawanna Historical Society	\$4,000
Lancaster County	
Lancaster Science Factory	\$10,023
LancasterHistory	\$25,456
National Association of Watch and Clock Collectors Inc.	\$22,019
North Museum of Nature and Science	\$14,952
Rock Ford Foundation	\$5,793
Lawrence County	
Lawrence County Historical Society	\$4,000
Lehigh County	
Lehigh County Historical Society Inc.	\$6,909
Luzerne County	
Wyoming Historical & Geological Society d/b/a Luzerne County Historical Society	\$4,000
Lycoming County	
Little League Baseball and Softball	\$4,000
Lycoming County Historical Society	\$4,000
McKean County	
Eldred World War II Museum	\$4,000
McKean County Historical Society	\$4,000
Mercer County	
Mercer County Historical Society	\$4,000

Mifflin County

Mifflin County Historical Society \$4,000

Monroe County

Monroe County Historical Association \$4,000

Quiet Valley Living Historical Farm \$4,000

Montgomery County

Historic Trappe \$4,000

Historical Society of Montgomery County \$4,000

Mennonite Historians of Eastern Pennsylvania \$4,000

Morgan Log House Historical Society \$4,000

National Audubon Society (Audubon MidAtlantic) \$9,708

Schwenkfelder Library & Heritage Center \$6,228

Northampton County

Delaware & Lehigh National Heritage Corridor \$6,647

Historic Bethlehem Museums & Sites \$25,037

Moravian Historical Society \$4,000

National Museum of Industrial History \$11,538

Northampton County Historical and Genealogical Society \$7,962

Northumberland County

Northumberland County Historical Society \$4,000

Perry County

Historical Society of Perry County \$4,000

Philadelphia County

American Philosophical Society \$33,879

American Swedish Historical Museum \$6,828

Arch Street Meeting House Preservation Trust \$4,000

Bartram Association \$33,879

Chestnut Hill Conservancy \$4,675

Christ Church Preservation Trust \$7,632

Cliveden of the National Trust Inc. \$5,541

Eastern State Penitentiary Historic Site Inc. \$33,979

Ebenezer Maxwell Mansion Inc. \$4,151

Friends of Laurel Hill & West Laurel Hill Cemeteries \$4,151

Fund for Girard College \$4,482

Glen Foerd Conservation Corporation \$12,069

Historic Fair Hill \$4,000

Historic Fallsington, Inc. \$4,000

Historic Germantown \$5,896

Historic Philadelphia Inc. \$30,646

Historic RittenhouseTown \$4,000

Historical Society of Pennsylvania \$25,533

Independence Seaport Museum \$33,879

Museum of the American Revolution	\$33,879
National Constitution Center	\$33,879
National Liberty Museum	\$32,982
Penn Museum	\$33,879
Philadelphia Fire Department Historical Corporation/Fireman's Hall Museum	\$4,000
Philadelphia Society for the Preservation of Landmarks	\$15,580
Please Touch Museum	\$33,879
Rosenbach Museum and Library	\$14,868
Science History Institute	\$33,979
Stenton, NSCDA/PA	\$8,671
The Academy of Natural Sciences of Drexel University	\$33,879
The Athenaeum of Philadelphia	\$13,252
The Carpenters' Company of the City & County of Philadelphia	\$5,978
The College of Physicians of Philadelphia	\$33,979
The Franklin Institute	\$33,879
The Library Company of Philadelphia	\$32,300
The Weitzman National Museum of American Jewish History	\$33,879
The Woodlands Trust for Historic Preservation	\$4,000
Wagner Free Institute of Science	\$8,989
Wyck Association	\$4,000

Pike County

Pike County Historical Society	\$4,000
--------------------------------	---------

Schuylkill County

Historical Society of Schuylkill County	\$4,000
---	---------

Somerset County

Historical & Genealogical Society of Somerset County Inc.	\$4,000
---	---------

Sullivan County

Sullivan County Historical Society's Museum	\$4,000
---	---------

Susquehanna County

Susquehanna County Historical Society & Free Library Association	\$4,000
--	---------

Tioga County

Tioga County Historical Society	\$4,000
---------------------------------	---------

Union County

Lewisburg Children's Museum	\$4,000
-----------------------------	---------

Warren County

Warren County Historical Society	\$4,000
----------------------------------	---------

Washington County	
Bradford House Museum	\$4,000
Historical Society of Western Pennsylvania (d/b/a Sen. John Heinz History Center)	\$6,864
Pennsylvania Trolley Museum Inc.	\$9,413
Wayne County	
Wayne County Historical Society	\$4,000
Westmoreland County	
Fort Ligonier Association	\$17,772
Ligonier Valley Historical Society	\$4,000
Westmoreland County Historical Society	\$4,000
Westmoreland Fayette Historical Society	\$4,000
Wyoming County	
Wyoming County Historical Society	\$4,000
York County	
Spring Grove Area Historical Preservation Society	\$4,000
Steam Into History	\$4,000
Susquehanna Heritage Corp.	\$4,000
York County History Center	\$22,932
TOTAL	\$1,900,000

Keystone Historic Preservation: Construction

Adams County		Amount
Great Conewago Presbyterian Church		\$14,850
Allegheny County		
Borough of Munhall		\$6,300
Frick Art & Historical Center		\$100,000
Genesis Corporation		\$25,000
Pittsburgh Parks Conservancy		\$50,000
Beaver County		
New Brighton Historical Society		\$41,266
Bucks County		
Andalusia Foundation		\$42,405
Lower Makefield Township		\$33,250
Margaret R. Grundy Memorial Museum		\$100,000
Cambria County		
1901 Church Inc. d/b/a/ The Steeples Project		\$17,500

Crawford County	
United Universalist Church of Meadville	\$79,165
Erie County	
Erie Art Museum	\$100,000
Presque Isle Light Station	\$10,000
Franklin County	
Greene Township	\$26,794
Greene County	
Rivers of Steel Heritage Corporation	\$55,476
Lancaster County	
LancasterHistory d/b/a LancasterHistory.org	\$34,720
Monroe County	
Monroe County Historical Association	\$100,000
Quiet Valley Living Historical Farm	\$8,350
Montgomery County	
Hiway Theatre Inc.	\$36,400
Merion Friends Meeting	\$100,000
St. Thomas Church	\$93,700
Philadelphia County	
Arch Street Meeting House Preservation Trust	\$100,000
Awbury Arboretum Association Inc.	\$100,000
Congregation Rodeph Shalom	\$48,869
Eastern State Penitentiary	\$100,000
Friends of 2125 Chestnut Street	\$100,000
Historic RittenhouseTown Inc.	\$31,674
Independence Seaport Museum	\$37,050
Philadelphia Society for the Preservation of Landmarks	\$100,000
The Trustees of the University of Pennsylvania	\$100,000
Susquehanna County	
Susquehanna County Historical Society	\$100,000
Warren County	
County of Warren PA	\$63,710
TOTAL	\$1,956,479

Keystone Historic Preservation: Planning

	Amount
Allegheny County	
City of Pittsburgh	\$20,000
Society to Preserve the Millvale Murals of Maxo Vanka	\$25,000
Chester County	
East Coventry Township	\$25,000
Cumberland County	
Cumberland County Historical Society	\$23,100
Dauphin County	
Grace United Methodist Church	\$25,000
Indiana County	
Indiana Borough	\$10,000
Lehigh County	
Whitehall Township	\$12,360
Northampton County	
Hellertown Historical Society	\$10,000
Philadelphia County	
Cranaleith Spiritual Center	\$25,000
Friends of the Tanner House c/o Preservation Alliance for Greater Philadelphia	\$25,000
Germantown Mennonite Historic Trust	\$13,600
Westmoreland County	
Lincoln Highway Heritage Corridor	\$14,988.75
TOTAL	\$229,048.75

TAX CREDITS

Federal Historic Preservation Tax Credit Program

	Project Cost
Allegheny County	
832 Western Avenue, Pittsburgh, Allegheny West Historic District, Pittsburgh	\$593,051
Hazelwood Brewing Co., Pittsburgh	\$6,409,648
Hunter Saw & Machine Co., Pittsburgh	\$2,007,570
Pittsburgh Athletic Association, Pittsburgh	\$31,671,915
C.M Schwab Industrial School, 115 East 9th Avenue, Homestead	\$3,539,409
Berks County	
Berks County Trust Company, Reading	\$16,000,000
Blair County	
Brett Building, Altoona	\$2,539,003
Sears Roebuck Building, Altoona	\$2,863,131
Bucks County	
Eastern Pin Ticket and Tag (Delbar Products Inc.), Perkasie	\$15,000,000
Dauphin County	
25 N. Front Street, Harrisburg	\$1,443,835
Lackawanna County	
Oppenheim Building, 409 Lackawanna Avenue, Scranton	\$12,000,00
Lancaster County	
Harold's Furniture Store, Lancaster	\$3,813,600
Kirk Johnson Building, Lancaster	\$5,150,800
Lancaster Newspaper Building, Lancaster	\$5,150,800
Lehigh County	
207 N. 8th Street, Allentown	\$612,415
Lycoming County	
419 W. 4th Street, Williamsport	\$222,587
Northampton County	
R.K. Laros Silk Mill, Bethlehem	\$25,448,989
Northumberland County	
Thomas A. Edison School, 700 N, Fourth Street, Sunbury	\$739,035

Philadelphia County	
1237 Belmont Avenue	\$244,646
1239 Belmont Avenue	\$244,646
1241 Belmont Avenue	\$244,646
1243 Belmont Avenue	\$733,940
4201 W. Girard Avenue	\$489,293
1904 Mt. Vernon Street	\$650,000
4104 Parkside Avenue	\$856,263
4106 Parkside Avenue	\$856,263
4202 Parkside Avenue	\$733,940
4208 Parkside Avenue	\$733,940
4210 Parkside Avenue	\$733,940
4216 Parkside Avenue	\$733,940
4218 Parkside Avenue	\$733,940
4222 Parkside Avenue	\$733,940
4238 Parkside Avenue	\$733,940
4240 Parkside Avenue	\$611,616
4244 Parkside Avenue	\$611,616
Delaware Station of the Philadelphia Electric Co.	\$150,000,000
John Greenleaf Whittier School	\$23,350,000
C.A. Rowell Department Store, 5627 Germantown Avenue	\$11,300,000
Tioga Mills	\$14,750,000
Washington County	
Washington Trust Company Building, Washington	\$9,979,424
TOTAL	\$355,265,721

Pennsylvania Historic Preservation Tax Credit Program

	Tax Credit Amount
Allegheny County	
Belmar School, Pittsburgh	\$300,000
New Granada Theater, Pittsburgh	\$300,000
C.M. Schwab Industrial School, Homestead	\$200,000
Westinghouse Air Brake General Office, Wilmerding	\$250,000
Berks County	
The American House, Reading	\$400,000
Blair County	
Saleme Building, Altoona	\$50,000
United Methodist Church, Hollidaysburg	\$150,000
Bucks County	
Eastern Pin Ticket and Tag Company Building, Perkasie	\$250,000
Otto Eisenlohr & Bros. Cigar Factory, Sellersville	\$200,000

Centre County

Nittany Lion Inn, Penn State \$325,000

Lackawanna County

Scranton Electric Building, Scranton \$400,000

Lancaster County

Stehli Silk Mill, Lancaster \$325,000

Philadelphia County

1906 N. 6th Street \$200,000

American Baptist Publication Society/Crozer Building \$200,000

Bellevue-Stratford Hotel \$300,000

Garden Court Plaza Apartments \$250,000

Germantown Fireproof Storage Building \$150,000

A Man Full of Trouble Tavern \$50,000

Reyburn Manufacturing Co. Building \$300,000

Roxborough Mills Building \$200,000

Star Carpet Mill \$200,000

TOTAL**\$5,000,000**