



# Deer Head Collection Containers

Updated September 3, 2025

**Head collection bins will be placed at these locations a week or two before the beginning of the season.**

## How do I get my deer tested for chronic wasting disease (CWD)?

Head collection bins are available within Disease Management Areas (DMAS) for free CWD testing. Deposit the head of your deer into any CWD Head Collection Container. The harvest tag must be filled out completely, legible, and physically attached to the deer's ear. The head must be placed in a plastic garbage bag and sealed before being placed in the collection bin. You will be notified of sample submission. You may remove and keep antlers as skulls and antlers will not be returned.

## What are high-risk carcass parts and what are the regulations on moving them?

High-risk carcass parts include: head (including brain, tonsils, eyes, and lymph nodes); spinal cord/backbone (vertebra); spleen; skull plate with attached antlers, if visible brain or spinal cord material is present; cape, if visible brain or spinal cord material is present; upper canine teeth, if root structure or other soft material is present; any object or article containing visible brain or spinal cord material; and brain-tanned hide.

It is illegal to export any high-risk cervid parts or materials from any DMA or designated Established Area (EA) within the Commonwealth unless going directly to a Game Commission approved cooperating processor or taxidermist. It is also illegal to import high-risk parts from any state or province outside of Pennsylvania unless going directly to a Game Commission approved cooperator. A list of approved cooperators can be found at [pa.gov/CWD](https://pa.gov/CWD)

## Head Collection Containers in DMA 2:

COUNTY	INFORMATION
1) Adams	SGL 249 HABITAT HEADQUARTERS, 1070 Lake Meade Rd, East Berlin 17316—From the intersection of Route 94 and Lake Meade Rd turn onto Lake Meade Rd. Follow Lake Meade Rd for 0.3 miles to gravel parking lot on the left.
2) Adams	MICHAUX STATE FOREST, 950 Newman Rd., Ortanna, PA 17353 - From the Intersection of US 30 and Old Route 30 turn onto Newman Road. Follow Newman Road south 1.7 miles to bin on right.
3) Bedford	PA FISH & BOAT COMMISSION, REYNOLDSDALE FISH CULTURE STATION, 2921 Reynoldsdale Rd, New Paris, PA 15554 - From Pleasantville, Take SR 56 East 2.3 miles; turn left on SR 4032, Reynoldsdale Road, for 0.5 miles to driveway on left.
4) Bedford	SGL 97 SR 2015, BLACK VALLEY ROAD PARKING AREA, Black Valley Rd., Everett, PA 25537 - From Everett, Take SR 2015, Black Valley Road, 0.6 miles south to SGL 97 parking area on right.
5) Bedford	SGL 49 BIG CREEK ROAD PARKING AREA, Big Creek Rd, Clearville, PA 15535 -From the intersection with SR 26 near Inglesmith, proceed North on SR 2007 (Big Creek Road) 5.5 Miles to SGL parking area on left.
6) Bedford	BEDFORD COUNTY CREW HEADQUARTERS, 372 Replogle School Rd., Pa New Enterprise, PA 16664 - From SR 869 take Replogle School Road to Food and Cover Headquarters.
7) Bedford	SGL 97 SR 326 PARKING AREA, 899 Main Rd., Bedford, PA 15522 - From Chaneyville take SR 326 West 3.0 Miles. Dumpster is in parking area on left.
8) Bedford	SGL 48 MILLIGANS COVE ROAD PARKING AREA, 2020 Milligans Cove Rd., Buffalo Mills, PA 15534 - From SR 96 take Cove Road to Milligans Cove Road to SGL parking lot on right.

COUNTY	INFORMATION
9) Blair	SGL 41 SPROUL MT ROAD PARKING AREA, 695 Sproul Mountain Rd, Roaring Spring, PA 16673 - From I-99, take Exit 15, Sproul Mountain Road, East 1.2 miles to SGL parking lot on left.
10) Blair	SGL 073, 131 Tollgate Lane, Martinsburg, PA 16662— From Martinsburg, PA head east on PA-164 for 4 miles then turn left on Tollgate Rd. Bin is located in parking area on the left.
11) Blair	SGL 198 VALLEY FORGE ROAD, 372 Valley Forge Rd., Duncansville, PA 16635 - From Old Rte 22, take SR 3009 (Valley Forge Road) south 0.7 miles to SGL parking area on right.
12) Blair	SGL 198 HEALY ROAD PARKING AREA, 292 Healy Rd., Duncansville, PA 16635 - From Old Rt. 22 take Healy Road to SGL parking lot on left.
13) Blair	SGL 147 SELDOM SEEN ROAD PARKING AREA, 128 Seldom Seen Rd., Pa Martinsburg, PA 16662- From SR 164 take Seldom Seen Road to bin and dumpster on right.
14) Cambria	GALLITZIN STATE FOREST, Windber, PA 15963 - 0.25 miles north of Krayn on Weigh Station Rd.
15) Cambria	SGL 108 SHOOTING RANGE, 198 Eugene Rd., Dysart, PA 16636 - From SR 53 near Fallentimber, take SR 1026 (Marina Road) 0.9 Miles to SGL Access Road on left. Proceed past Shooting Range to bin.
16) Cambria	SGL 26 SR 869 PARKING AREA, 2193 Shawnee Rd., Sidman, PA 15955 - From Pavia, take SR 869 West. SGL parking lot is on right at top of mountain.
17) Cambria	SGL 79, PA-271 (Station Road), Nanty-Glo, PA 15943 – From Nanty-Glo, PA take PA-271 north for 1.2 miles, bin will be on right.
18) Centre	PENN NURSERY, 1493 Crowfield Rd, Spring Mills, PA 16875—From Rt 322, continue west on Crowfield Rd 0.4 mile to pull-off on left.
19) Centre	SGL 33 PUBLIC ACCESS PARKING LOT, along US Route 322 approximately 4.3 miles south of Rt 504 intersection at Philipsburg, 0.25 mi south of PennDOT maintenance lot.
20) Centre	SGL 176 PARKING AREA, south end of Scotia Range Rd, near intersection with W. Gatesburg Rd, 1.5miles northwest from Tadpole Rd.
21) Centre	SGL 176, north end of Scotia Range Rd, from I-99 head south 0.3 miles on Grays Woods Blvd, then left onto Scotia Rd for 0.4 miles, then left on to Scotia Range Rd for 0.1 miles.
22) Cumberland	SGL 230 ENOLA ROAD PARKING AREA, 350 Enola Rd., Carlisle, PA 17013— From Schlusser, PA, take PA-34 N (Spring Rd.) for 1.9 mi, then turn left on PA-944 W (Enola Rd.). Continue 0.7 mi, bin will be on left.
23) Cumberland	SGL 169 PARK HILL ROAD PARKING AREA, Newville, PA 17241 - From the intersection of SR 641 (Greenspring Rd) and SR 4007 (Mountain Rd), follow SR 4007 1.5 mi to Park Hill Rd. Turn right onto Park Hill Rd and proceed 0.6 mi to State Game Lands parking area on left.
24) Cumberland	MICHAUX STATE FOREST FERN RIDGE, 1370 Pine Grove Rd., Gardners, PA 17324 - From I-81 take Exit 37, head South 9.2 miles on PA Route 233 (Pine Grove Road). Turn right on Old Orchard Road to bin on left.
25) Dauphin	SGL 290, east of Route 22 “behind” Red Rabbit near managed dove field parking area. Turn at the gravel road between Red Rabbit and Sheetz.
26) Franklin	CHAMBERSBURG WASTEWATER PLANT, Dump Rd., Chambersburg, PA 17201 - From W. South St. turn left onto Hollywell Ave. Proceed 0.3 mi, turn right onto Dump Rd. Take first left, bin will be 500 ft down the road on the left.
27) Franklin	SGL 124 LITTLE COVE ROAD PARKING AREA, 3703 Little Cove Road, Mercersburg, PA 17236 - From Mercersburg, follow SR 16, Buchanan Trail, West 4.5 Miles to SR 456, Little Cove Road. Follow Little Cove Road South 0.1 7 miles to dumpster and bin on right.
28) Fulton	SGL 53 JAMIE ROAD PARKING AREA, 382 Jamie Rd., McConnellsburg, PA 17233 - From McConnellsburg, follow US 30 west 4.2 miles. Turn left on T482 Jamie Road and proceed 0.3 miles to SGL parking area.
29) Fulton	SGL 128, 941 Deneens Gap Rd, Warfordsburg, PA 17267— From I-70, take Exit 163; proceed east on Deneens Gap Road for 0.4 miles, then turn left on Moss Road. SGL parking lot is 0.4 miles on left.
30) Fulton	DCNR BUCHANAN STATE FOREST on SR 915, 1373 North Valley Rd., Wells Tannery, PA 17228.

COUNTY	INFORMATION
31) Huntingdon	PSU STONE VALLEY FOREST HEADQUARTERS PARKING AREA, 4924 Headquarters Ln., Huntingdon, PA 16652— From Huntingdon, PA, take PA-26 N for 11.1 mi then turn left onto Wesley Chapel Rd and continue 2.7 mi. Slight right onto PA-305 E and continue 0.6 mi. Bin will be on right.
32) Huntingdon	PSU STONE VALLEY FOREST MASSEYBURG PARKING AREA, 3996 Charter Oak Rd., Petersburg, PA 16669— From Petersburg, PA, take PA-305 E for 6.6 mi then continue straight on Charter Oak Rd. for another 2.8 mi. Turn left onto gravel road (across from Stone Valley Recreation Area West Entrance).
33) Huntingdon	SGL 112 THOUSAND STEPS PARKING AREA, 14559 William Penn Hwy., Mount Union, PA 17066.
34) Huntingdon	SGL 118 DINER 22 PARKING AREA, 5094 William Penn Hwy., Alexandria, PA 16611.
35) Huntingdon	SGL 121 JOLLER PARKING AREA, 9216 Old Plank Rd., Robertsdale, PA 16674.
36) Huntingdon	SOUTH CENTRAL REGIONAL OFFICE, 8627 William Penn Hwy, Huntingdon, PA 16652.
37) Juniata	DELAWARE TOWNSHIP MUNICIPAL BUILDING, 814 Quarry Rd., McAlisterville, PA 17049.
38) Juniata	RICHFIELD FIRE COMPANY, 38156 PA 35, Richfield, PA 17086.
39) Mifflin	SGL 107 PAINTERSVILLE PARKING AREA, 3636 Back Maitland Rd., Lewistown, PA 17044.
40) Mifflin	SGL 113 WAKEFIELD RD PARKING AREA, Wakefield Rd., McVeytown, PA 17051. From McVeytown, PA, take US-22 E/US-522 N for 2.7 mi, turn left onto Wakefield Rd and continue for 0.8 mi, bin will be on right.
41) Mifflin	BELLEVILLE FIRE COMPANY, 4231 E. Main St., Belleville, PA 17004.
42) Perry	DCNR TUSCARORA STATE FOREST BIG SPRING PARK, 7902 Big Spring Rd., New Germantown, PA 17071.
43) Perry	DCNR TUSCARORA STATE FOREST HWY 233, 1471 Sheaffers Valley Rd., Landisburg, PA 17040.
44) Perry	SAVILLE TOWNSHIP BUILDING, 3954 Veterans Way, Ellitsburg, PA 17024.
45) Perry	SGL 256 HWY 274 PARKING AREA, 1660 PA-274, (New Bloomfield Rd.), New Bloomfield, PA 17068— From Duncannon, PA, take PA-274 west for 6.1 mi, bin will be on right.
46) Snyder	DCNR BALD EAGLE STATE FOREST HWY 235 TRAILHEAD, 17703 PA 235, Beaver Springs, PA 17812— From McAlisterville, PA, take PA-235 N for 4.9 mi, bin will be on right.
47) Snyder	SGL 194 GAMELAND ROAD PARKING AREA, 15 Gameland Rd., Mount Pleasant Mills, PA 17853.
48) Snyder	MIDDLEBURG BORO MAINTENANCE SHED, 193 Edmond Ave., Middleburg, PA 17842.
49) Snyder	SGL 188, 5798 CREEK ROAD, BEAVERTOWN, PA 17813— From Beavertown, PA take Pine Swamp Rd. north 1.5 mi then turn right onto Creek Rd and continue 0.3 mile, bin will be on left.
50) Snyder	SGL 212—From intersection of Inch Hill Road and Dam Hill Road, follow Dam Hill Road east for 0.73 mile. Bin in parking lot on left.
51) Somerset	SGL 42 PARKING AREA OFF HWY 271, Menoher Hwy., Johnstown, PA 15905— From Ligonier, PA, take PA-711 N (N Market St.) for 2.5 mi then a slight right onto PA-271 N. Continue 7.9 mi, bin will be on left.
52) Somerset	SGL 82 SR 160 PARKING AREA, 3974 Cumberland Hwy., Meyersdal, PA 15552- From Berlin, follow SR 160 south 10 miles to SGL parking lot on the left.
53) Somerset	SGL 228 LAMBERT MOUNTAIN ROAD PARKING AREA, 2737 Lambert Mountain Rd., Cairnbrook, PA 15924 - From Central City, take Main St. 0.4 mi then turn left onto Shaffer Mountain Rd. Continue 0.8 mi then bear right onto Lambert Mountain Road. Continue 1.6 mi to SGL parking lot on right.
54) Somerset	SGL 050, 744 Berlin Plank Rd., Somerset, PA 15501— From Somerset, PA. follow E Main St. then slight right on Berlin Plank Rd. Continue 1.4 mi to SGL parking lot on right.
55) Somerset	PennDOT MAINTENANCE AREA, Glades Pike (Rt. 31), Roxbury, PA—From Berlin, PA take PA-160 N for 2.8 miles. Turn right onto PA-31 E and continue 1.3 miles. Bin will be in maintenance area on left.
56) Union	DCNR BALD EAGLE DISTRICT OFFICE 18865 Old Turnpike Rd., Millmont, PA 17845—From intersection of Rt 235 and 45 west of Hartleton, continue west of Rt 45 0.1 mile to DCNR District Office on left.

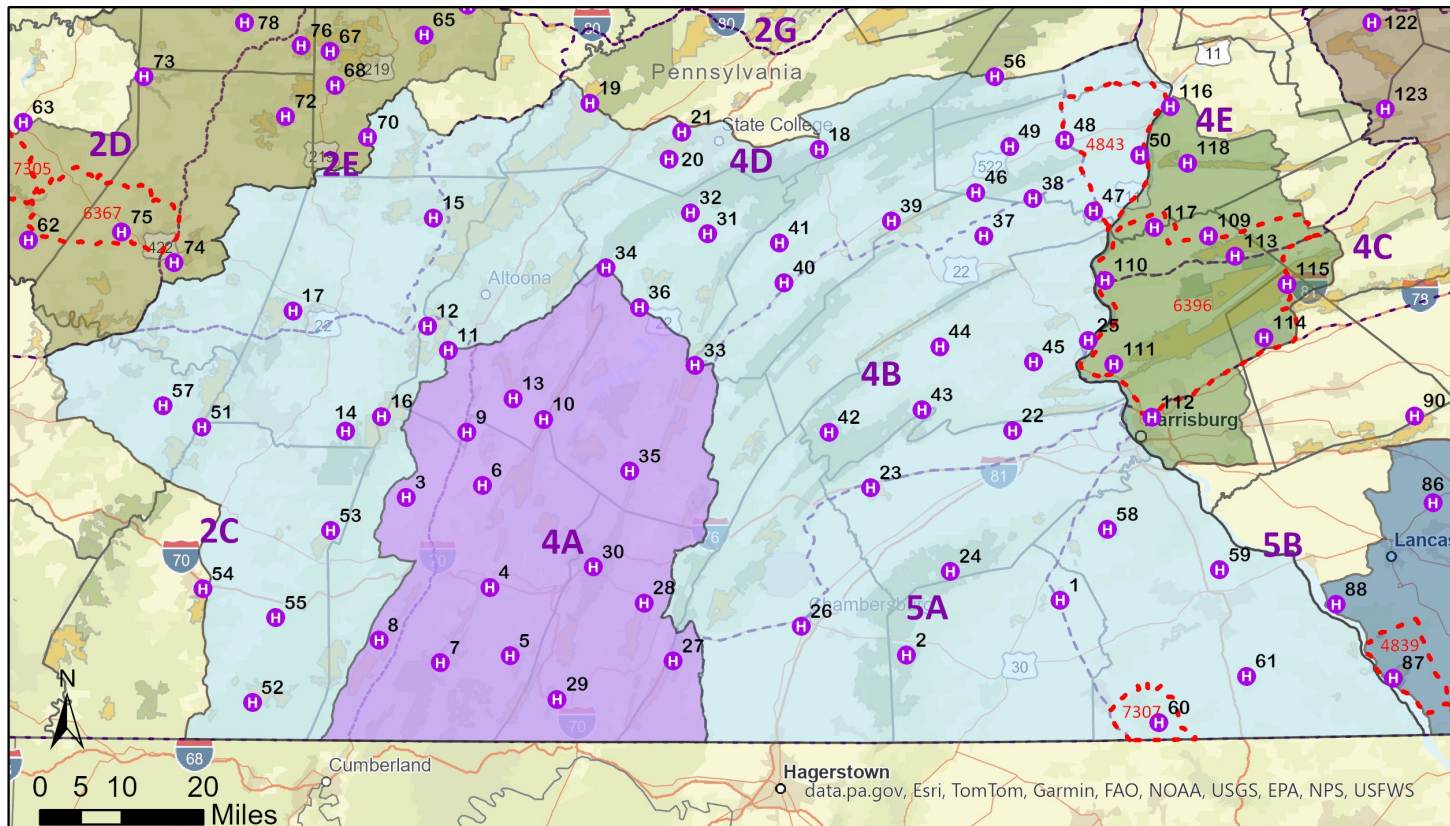


COUNTY	INFORMATION
57) Westmoreland	SOUTHWEST REGIONAL OFFICE, 4820 Route 711, Bolivar, PA 15923.
58) York	SGL 242 PARKING AREA, 1663 Old York Road, Dillsburg, PA 17019– From the intersection of Route 15 and Harrisburg Pike take Harrisburg Pike. Follow Harrisburg Pike -which becomes S Chestnut St then Old York Rd– for approximately 5 miles to the gravel parking lot on the left.
59) York	YORK COUNTY PARKS OFFICE, 400 Mundis Race Road, York, PA 17406 - Turn into the park office from Mundis rd and follow the road to the right to the bin.
60) York	MANHEIM TOWNSHIP OFFICE—5191 Wool Mill Rd, Glenville, PA 17329.
61)York	SPRING VALLEY PARK- 3600 Sunlight Dr, Glen Rock, PA 17327.

## PENNSYLVANIA GAME COMMISSION

# Disease Management Area (DMA) 2 and Established Area (EA)

### Public Use Head Bin Locations



## Head Collection Containers in DMA 3:

COUNTY	INFORMATION
62) Armstrong	Apollo-Spring Church Sportsman, 1945 PA-56, Spring Church, PA 15686—Look for gravel lot off Spring Church Rd where bin is located.
63) Armstrong	ARMSTRONG COUTY CONSERVATION DISTRICT OFFICE— 124 Armsdale Rd, Kittanning, PA 16201.
64) Clearfield	SANDY TOWNSHIP STOCKPILE, 4594 Rockton Road, Dubois, PA 15801 - From US 322 at Rockton, take SR 4014 (Dubois Rockton Road) 4.5 miles to Sandy Township Stockpile on right.
65) Clearfield	PIKE TOWNSHIP MUNICIPAL BUILDING, 4257 Curwensville-Grampian Hwy., Curwensville, PA 16833— From Curwensville, go west on 879 for 1.5 miles, turn right into municipal building lot, continue to back of lot at Bridgeport Rd.
66) Clearfield	CLEARFIELD COUNTY FAIRGROUNDS, 5615 Park St., Clearfield, PA 16830— From intersection of 879 and 322, continue 2 miles west on 322 through Clearfield, left on Weaver St., right on Stadium Dr., bin is at west end of Fairground Bldg.
67) Clearfield	SGL 87, 1199 McGees Mills Rd., Mahaffey, PA 15757— From Troutville, take SR 3009 south 7.4 miles. Turn right on SGL access road for 200 feet.
68) Clearfield	BELL TOWNSHIP MUNICIPAL BUILDING, 6018 Colonel Drake Hwy., Mahaffey, PA 15757—From the intersection of SR 36/US 219 and SR 3009 Newtonburg Rd., proceed west 0.2 miles to Bell Township Municipal Building on right.
69) Clearfield	BRADY TOWNSHIP BUILDING, 3058 Shamokin Trail, Luthersburg, PA 15848. From US 219/US 322, take SR 410 southwest 0.2 miles to bin on left.
70) Clearfield	HUGILL SANITATION, 2811 Five Points Road, LaJose, PA 15753 - From State Highway 36 approximately 3.3 miles north of Westover, turn left onto SR 3014, Five Points Road. Follow Five Points Road west 0.3 miles to bin on left.
71) Elk	SGL 44 HEADQUARTERS BUILDING, Game Commission Road (Township Road 318), 0.7 mile south of intersection with State Route 949, 1.4 miles east of Portland Mills.
72) Indiana	SGL 262 BUILDING, 2064 Logan Road, Glen Campbell, PA 15742 - From Glen Campbell, take Glen Campbell Rd. north for 2.5 mi. Turn left onto Smith-port Rd. and continue 0.3 mi then turn left onto Logan Rd. Continue 0.5 mi, bin will be on left.
73) Indiana	SGL 427 MAHONING CREEK ACE FLOOD CONTROL, Allen Flat Rd., Dayton, PA 16222— From Dayton, PA, take E Main St. 0.4 mile then turn left onto PA-839 N for 2.2 miles, turn right onto Allen Flats Rd and continue for 1 mile, bin will be on right.
74) Indiana	SGL 273 PARKING AREA- from Homer City, PA take Lucerne Rd for 2.3 miles, turn right onto PA-954 S and continue for 0.6 miles, turn left and the bin will be in the parking lot on the left.
75) Indiana	PARKWOOD RD - From the city of Indiana, take US-422 W northwest for 3.7 miles, turn left onto Parkwood Rd. Continue for approximately 0.8 miles and bin will be on your left.
76) Jefferson	SGL 195 PARKING AREA, 1707 Filtering Plant Rd., Punxsutawney, PA 15767 -From Big Run take T960 (Filtering Plant Road) south 2.3 miles to SGL parking area on right.
77) Jefferson	CLEAR CREEK STATE PARK, Sigel, PA 15860 - From the intersection of SR 36 and SR 949, follow SR 949 northeast 4 miles to Clear Creek State Park. Continue 1 mile past Clear Creek Park Rd. Bin will be on right.
78) Jefferson	MCCALMONT TOWNSHIP FIRE HALL, 101 Firehouse Ln, Anita, PA 15711 - From SR 310 (Main Street), in Anita, go east on Spruce Street for approximately 300 feet, then turn right onto Firehouse Lane to Head Collection Bin.
79) Jefferson	SGL 31 PARKING AREA, 4152 Knox Dale Rd., Reynoldsville, PA 15825 - From Knox Dale follow SR 2023 (Knox Dale Road) south 3.7 Miles. Turn right onto SGL Access road for 300 feet to SGL parking area on left.
80) Jefferson	JEFFERSON COUNTY CONSERVATION DISTRICT, 1514 Rte. 28, Brookville, PA 15825 - From I-80 near Brookville, take Exit 81 for PA 28. Head north for 0.3 mile to Jefferson County Conservation District on right.



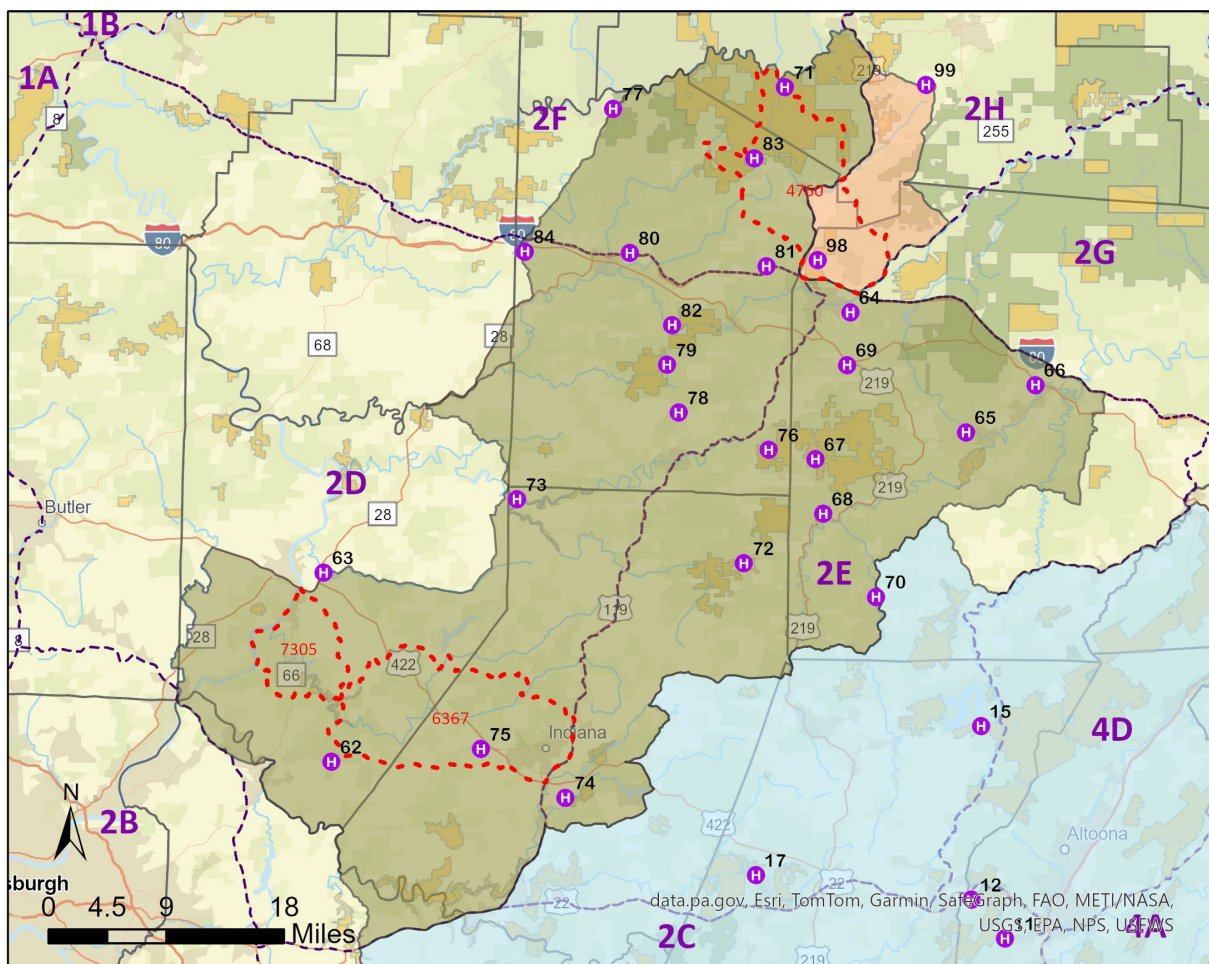
COUNTY	INFORMATION
81) Jefferson	KYLE LAKE PARKING AREA, Kyle Run Rd, Falls Creek, PA 15840 - From Falls Creek, follow Airport Rd. northwest. Cross over I-80 and turn left onto Kyle Run Rd. Continue for 1 mile to bin on left.
82) Jefferson	SGL 244 SANDY LICK CREEK PARKING AREA - Take Exit 86 off I-80. Go South on SR 1830 (Fuller Rd.) 0.8 mi. to the intersection with US 322. Cross US 322 South on Fuller Rd 2.1 mi. to just before the bridge at Sandy Lick Creek. Turn left on gravel road for 0.4 mile.
83) Jefferson	SGL 54 GAME SCHOOL ROAD PARKING AREA - Game School Rd., Brockway, PA 15824. From the intersection of SR 28 and Game School Road just west of Brockway, follow Game School Rd north then west 3.2 miles to bin on right.
84) Jefferson	SGL 266 PARKING AREA, Route 949, Corsica, PA 15829 - From the intersection of US 322 (Main Street) and SR 949 (Corsica Summerville Rd) in Corsica, follow SR 949 south for 0.5 miles to SGL parking area on right.

## PENNSYLVANIA GAME COMMISSION

# Disease Management Area (DMA) 3

### Public Use Head Bin Locations

- H Head Collection Bin
- DMA 2
- State Game Lands
- 2025-26 DMAP Units
- DMA 6
- State Forest
- DMA 3
- Wildlife Management Unit (WMU)
- County



## **Head Collection Containers in DMA 4:**

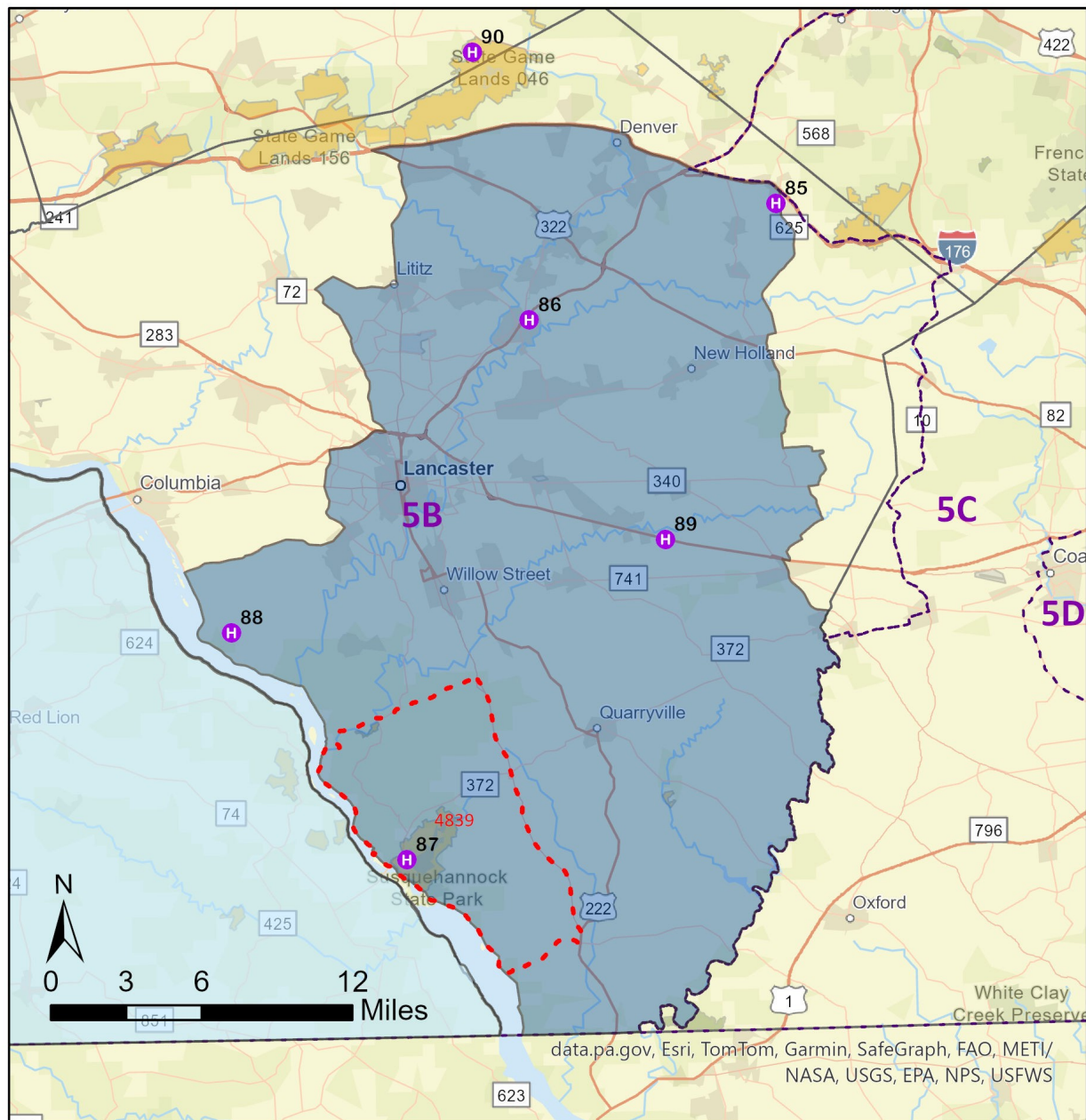
<b>COUNTY</b>	<b>INFORMATION</b>
85) Lancaster	BOWMANSVILLE FIRE COMPANY, 146 W. Maple Grove Rd, Bowmansville, PA 17507, From Bowmansville (intersection of SR-625 and West Maple Grove Rd.) travel west on Maple Grove Rd. 0.2 mile to Fire Company on right.
86) Lancaster	WEST EARL TOWNSHIP BUILDING, 157 W. Metzler Rd, Ephrata, PA 17522. From US-222 take exit for PA-772 towards Brownstown/Rothsville, turn right onto PA-772 W for 0.2 mile, turn right onto PA-272 N for 0.3 mile, turn right onto N Church St. SW and continue 0.1 mile, turn left onto W Metzler Rd. for 0.2 mile to Twp Building on left.
87) Lancaster	MUDDY RUN PA-372 PARKING AREA, Holtwood Rd, Holtwood, PA 17532- 400 ft north of intersection of SR 0372 (Holtwood Road), Old Pinnacle Rd. (T-434), and River Rd. (SR 3006).
88) Lancaster	BLUE ROCK FIRE RESCUE HOUSE 903– 3079 River Rd, Conestoga, PA 17516, 0.3 mile north of intersection with Indian Marker Road (T-579) and 0.27 mile south of intersection with Breneman Road (T-581).
89) Lancaster	PARADISE TOWNSHIP BUILDING– 2 Township Dr, Paradise, PA 17562. Bin is in the gravel lot east of the building.
90) Lebanon	MIDDLE CREEK WILDLIFE MANAGEMENT AREA, SGL 46, Hopeland Road, Newmanstown, PA 17073– From Kleinfeltersville, PA take PA-897 to Hopeland Rd. and continue 1 mi to bin on right.

**DMA 4 MAP ON NEXT PAGE**

# Disease Management Area (DMA) 4

## Public Use Head Bin Locations

-  Head Collection Bin
-  DMA 4
-  State Game Lands
-  2025-26 DMAP Units
-  DMA 2
-  State Forest
-  Wildlife Management Unit (WMU)
-  County





## Head Collection Containers in DMA 5:

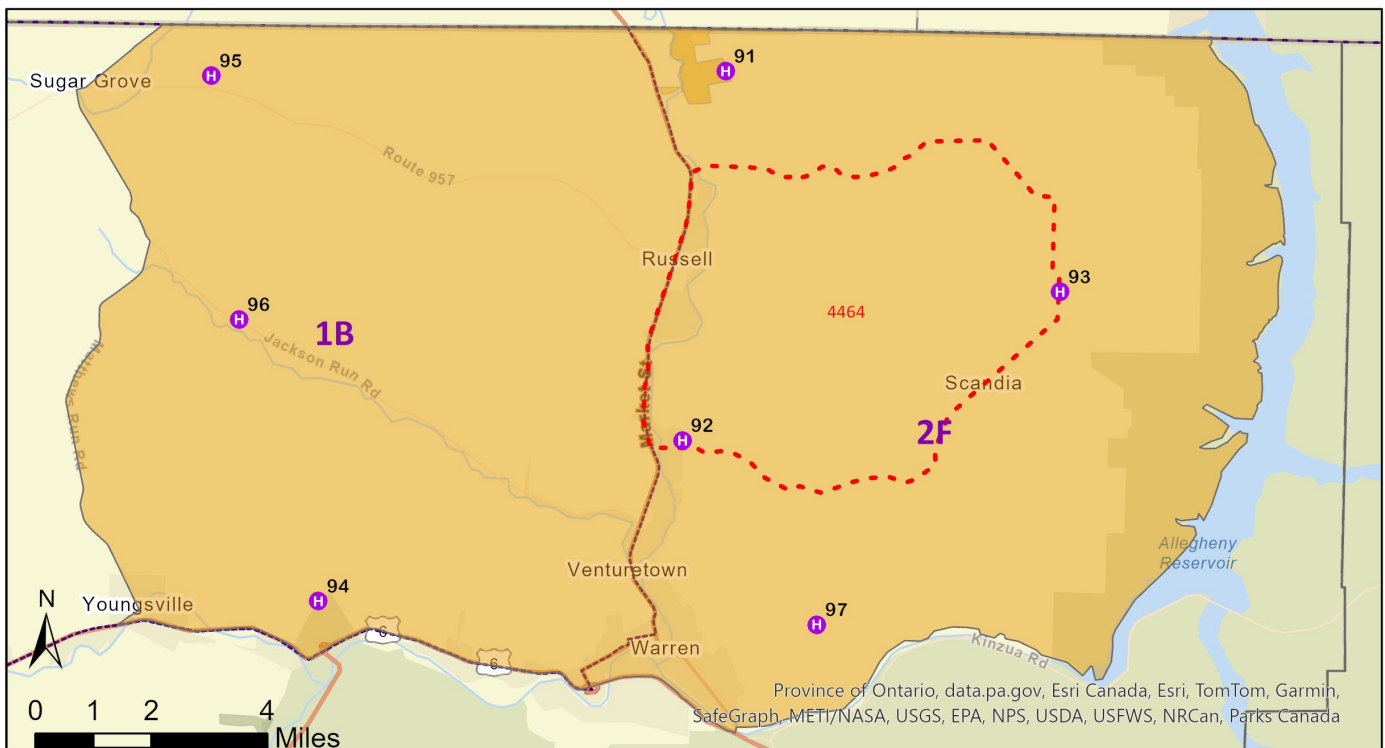
COUNTY	INFORMATION
91) Warren	SGL 282 PARKING AREA, along Akeley Road at junction with Howard Road, 1.8 miles north of Akeley, PA.
92) Warren	PennDot MAINTENANCE STOCKPILE, 4100 Conewango Avenue, Warren, PA 16365.
93) Warren	ELK TWP. MAINTENANCE GARAGE, 6962 Scandia Rd., Russell, PA 16345, From Scandia, follow Scandia Rd/Warren-Olean Rd north for 2 miles to Maintenance Garage on right.
94) Warren	ALLEGHENY NATIONAL FOREST, Keller Road, from US-6/US-62 S, take US-62 S exit toward Tidioute/Tionesta, turn right onto Irvine Run Rd. for 0.2 mile, keep right to continue on Keller Rd. for 0.7 mile, bin will be on left.
95) Warren	SUGAR GROVE TOWNSHIP BUILDING, 195 Creek Rd., Sugar Grove, PA 16350, From Sugar Grove, take PA-957 E for 2.1 mile. Take slight left onto Old State Rd. (T-589), then left onto Creek Rd. Continue 0.2 mile to Township Building.
96) Warren	MORTENSON RECYCLING, 8336 Jackson Run Road, Sugar Grove, PA 16350.
97) Warren	COBHAM PARK SELF STORAGE, 2420 Cobham Park Road, Warren, PA 16365.

## PENNSYLVANIA GAME COMMISSION

# Disease Management Area (DMA) 5

## Public Use Head Bin Locations

-  Head Collection Bin
-  DMA 5
-  State Game Lands
-  2025-26 DMAP Units
-  Wildlife Management Unit (WMU)
-  State Forest
-  County



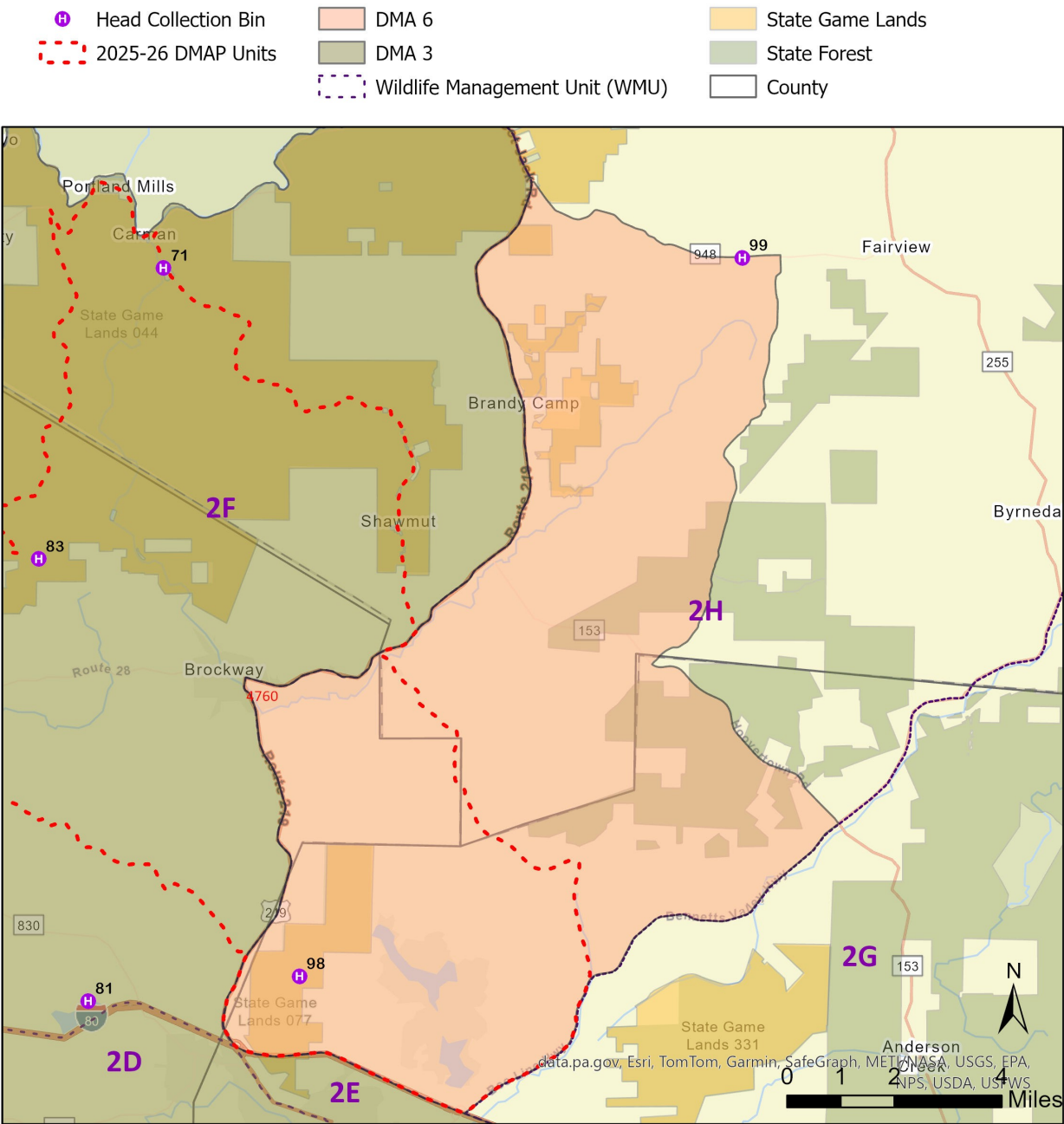
Head Collection Containers in DMA 6:

COUNTY	INFORMATION
98) Clearfield	SGL 77 PUBLIC SHOOTING RANGE, on Game Lands Road (Township Road 587), 1.3 miles east of State Route 219.
99) Elk	CORNER MARKET & DELI, 421 Main Street, Kersey, PA 15846.

PENNSYLVANIA GAME COMMISSION

Disease Management Area (DMA) 6

Public Use Head Bin Locations



## **Head Collection Containers in DMA 7:**

<b>COUNTY</b>	<b>INFORMATION</b>
100) Columbia	SGL 226 PARKING LOT, along Spruce Run Rd, 1.2 miles north of Rt 254, west of Millville.
101) Lycoming	SGL 134 ENTRANCE TO OLD PHEASANT FARM, 1609 Proctor Rd, Williamsport, PA 17701. From intersection of Wallis Run Rd and Hoppestown Rd near Proctor, 0.4 miles south on Proctor Rd.
102) Lycoming	98 Upper Powys Rd, Cogan Station, PA 17728. Located in roadside lot 150 yards east of intersection with Lycoming Creek Rd, 3.2 miles south of Trout Run or 2.5 miles north of Rt 973.
103) Lycoming	ENTRANCE TO LOYALSOCK GAME FARM, 18 Game Farm Rd, Montoursville, PA 17754. 0.1 miles west of Rt 87 on Rt 973 at intersection with Wallis Run Rd.
104) Lycoming	PENN TOWNSHIP BUILDING, 4600 Beaver Lake Rd Hughesville PA. Along Beaver Lake Rd 4.5 miles west from Rt 42, near intersection with Election House Hill Rd.
105) Lycoming	MUNCY CREEK TOWNSHIP BUILDING, 575 Rt 442, Muncy, PA 17756, east of Muncy, along Rt 442, 0.6 miles from Rt 405 intersection.
106) Lycoming	MILL CREEK TOWNSHIP BUILDING, 2064 Woodley Hollow Rd, Montoursville, PA 17745. From Rt 864 between Farragut and Picture Rocks, 1.4 miles south on Woodley Hollow Rd.
107) Lycoming	LOYALSOCK TOWNSHIP BUILDING between Williamsport and Montoursville. 2501 E 3rd St, Williamsport, PA 17701. Use 3rd Street exit, turn onto Country Club Drive at first light, behind building and just beyond gate.
108) Sullivan	Approximately 2.2 miles south of Hillsgrove at the intersection of SR 87 and Ogdonia rd.

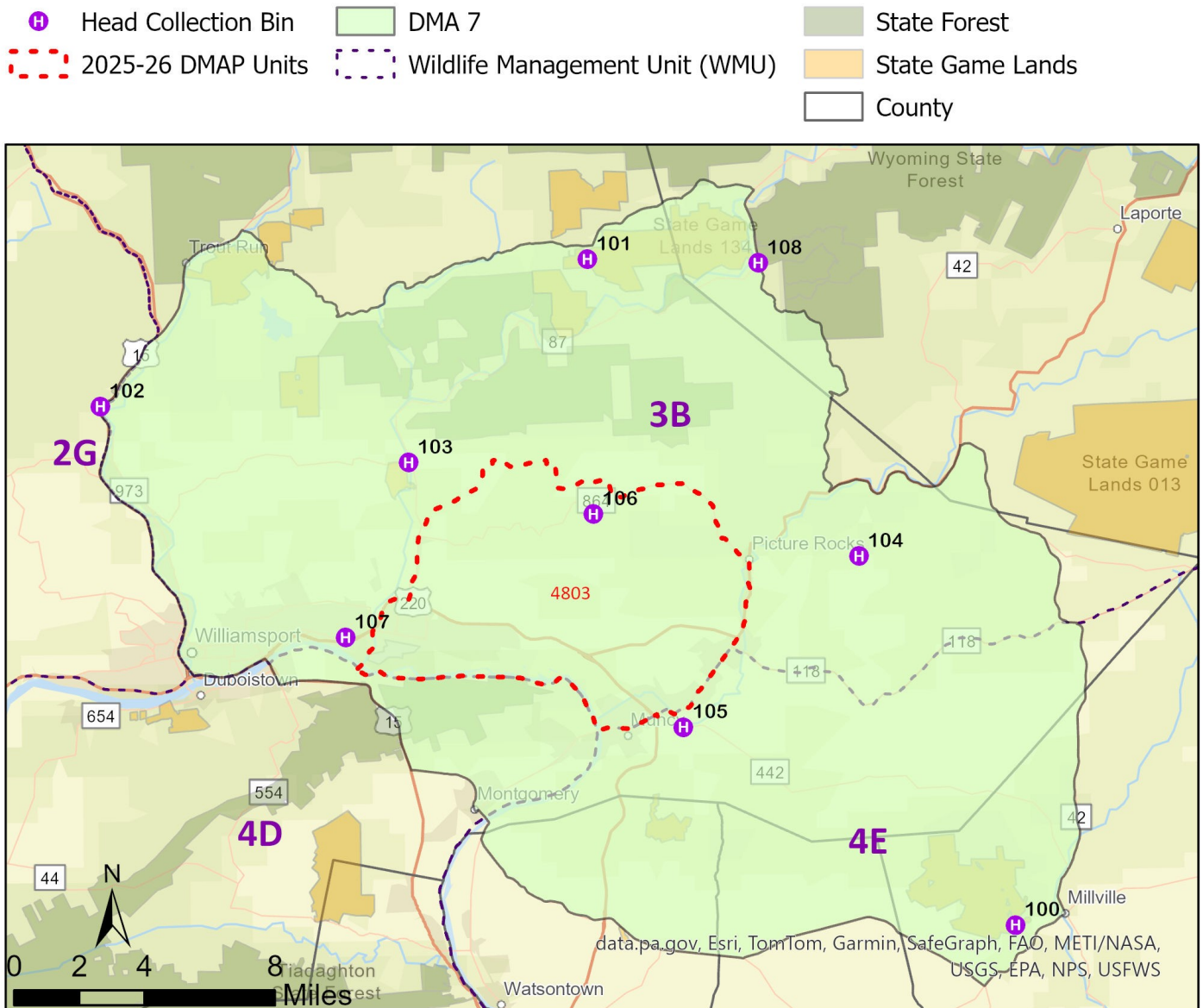
**DMA 7 MAP ON NEXT PAGE**



PENNSYLVANIA GAME COMMISSION

# Disease Management Area (DMA) 7

## Public Use Head Bin Locations



## **Head Collection Containers in DMA 8:**

<b>COUNTY</b>	<b>INFORMATION</b>
109) Dauphin	GRATZ COMMUNITY CENTER PARKING AREA- 125 N. Center St Lykens PA.
110) Dauphin	MILLERSBURG- Corner of Market St. & Pine St., 200 Pine St. Millersburg PA.
111) Dauphin	CLARKS VALLEY RD— at the intersection of Peters Mountain Rd and Clarks Valley Rd. The pull off is on Clarks Valley Rd.
112) Dauphin	GAME COMMISSON HEADQUARTERS—2001 Elmerton Ave, Harrisburg 17110 - From the intersection of Elmerton Ave and Gene Cook Way, turn onto Gene Cook way. Follow Gene Cook Way for 0.1 miles to bin by maintenance building.
113) Dauphin	SGL 264 HEADQUARTERS— 185 Dayton Street, Williamstown, PA 17098.
114) Lebanon	FORT INDIANTOWN GAP, intersection of Asher Miner Rd and Clement Ave.
115) Lebanon	SGL 211 STONY VALEEEY RAILROAD GRADE PARKING LOT- off of Gold Mine Rd, Jonestown, PA 17038.
116) Northumberland	PA FISH & BOAT COMMISSION SUNBURY BOAT LAUNCH, SR 147 Sunbury, PA 17081.
117) Northumberland	MAHANTANGO CREEK RD- approximately 0.27 mile east of Game Farm Rd. intersection, Dalmatia, PA 17017.
118) Northumberland	SGL 084—798 Creek Rd, Dornsife, PA 17823.

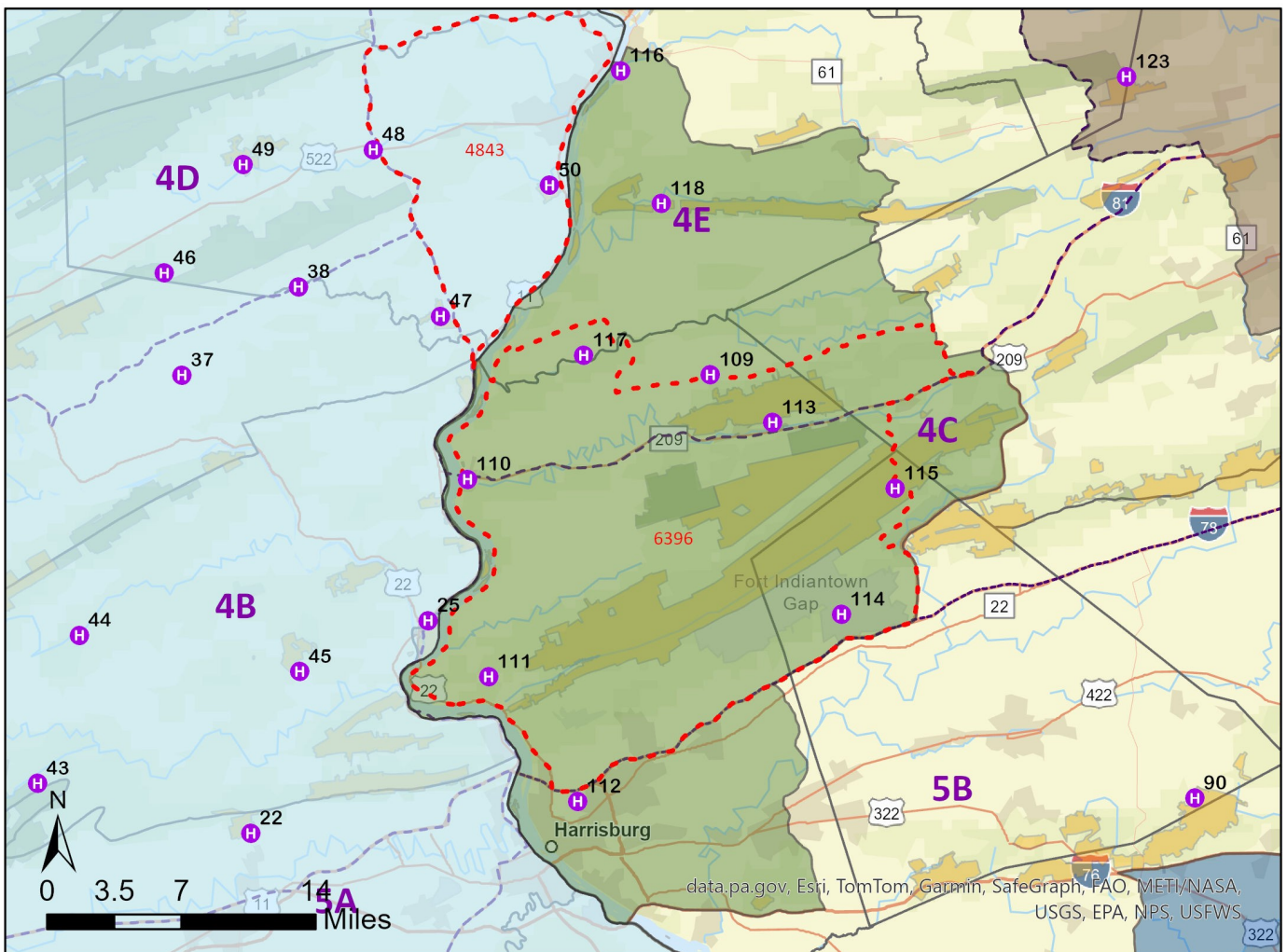
**DMA 8 MAP ON NEXT PAGE**

# PENNSYLVANIA GAME COMMISSION

## Disease Management Area (DMA) 8

### Public Use Head Bin Locations

- H Head Collection Bin
- 2025-26 DMAP Units
- DMA 8
- DMA 2
- DMA 4
- DMA 9
- Wildlife Management Unit (WMU)
- State Game Lands
- State Forest
- County





## **Head Collection Containers in DMA 9:**

<b>COUNTY</b>	<b>INFORMATION</b>
119) Carbon	SGL 141 PARKING AREA WEST– From the town of Hazleton, follow PA 93 South for approximately 9.2 miles. The bin is in a gravel lot on the left.
120) Carbon	SGL 40 PARKING AREA– Approximately 200 yards south of I-80 off Route 534 on the left.
121) Carbon	SGL 141 PARKING AREA EAST– Gravel lot across the street from 526 Behrens Rd, Jim Thorpe, PA 18229.
122) Columbia	SGL 58 SHOOTING RANGE– Rifle Range Rd, Bloomsburg, PA 17815.
123) Columbia	SGL 329 parking area- turn onto Aristes Rd from Little Mountain road and drive 2.7 miles. The bin will be in the parking lot on your right.
124) Columbia	SUMMERHILL FIRE COMPANY– 422 Summerhill Rd, Berwick, PA 18603.
125) Luzerne	SUGARLOAF TOWNSHIP BUILDING– 124 N Main St, Sugarloaf, PA 18249.
126) Luzerne	RICE TOWNSHIP BUILDING– 3000 Church Rd, Mountain Top, PA 18707.
127) Schuylkill	SGL 227 PARKING LOT– off of Tuscarora Park Rd. From the town of Barnesville, head East on Route 54 for approximately 0.6 miles. Turn right on to State Rd and travel approximately 0.5 miles. Turn left on Tuscarora Park Rd. Travel approximately 0.7 miles. The bin will be on your left in a gravel lot across the road from Weiser Forest District Locust Valley fire control station.

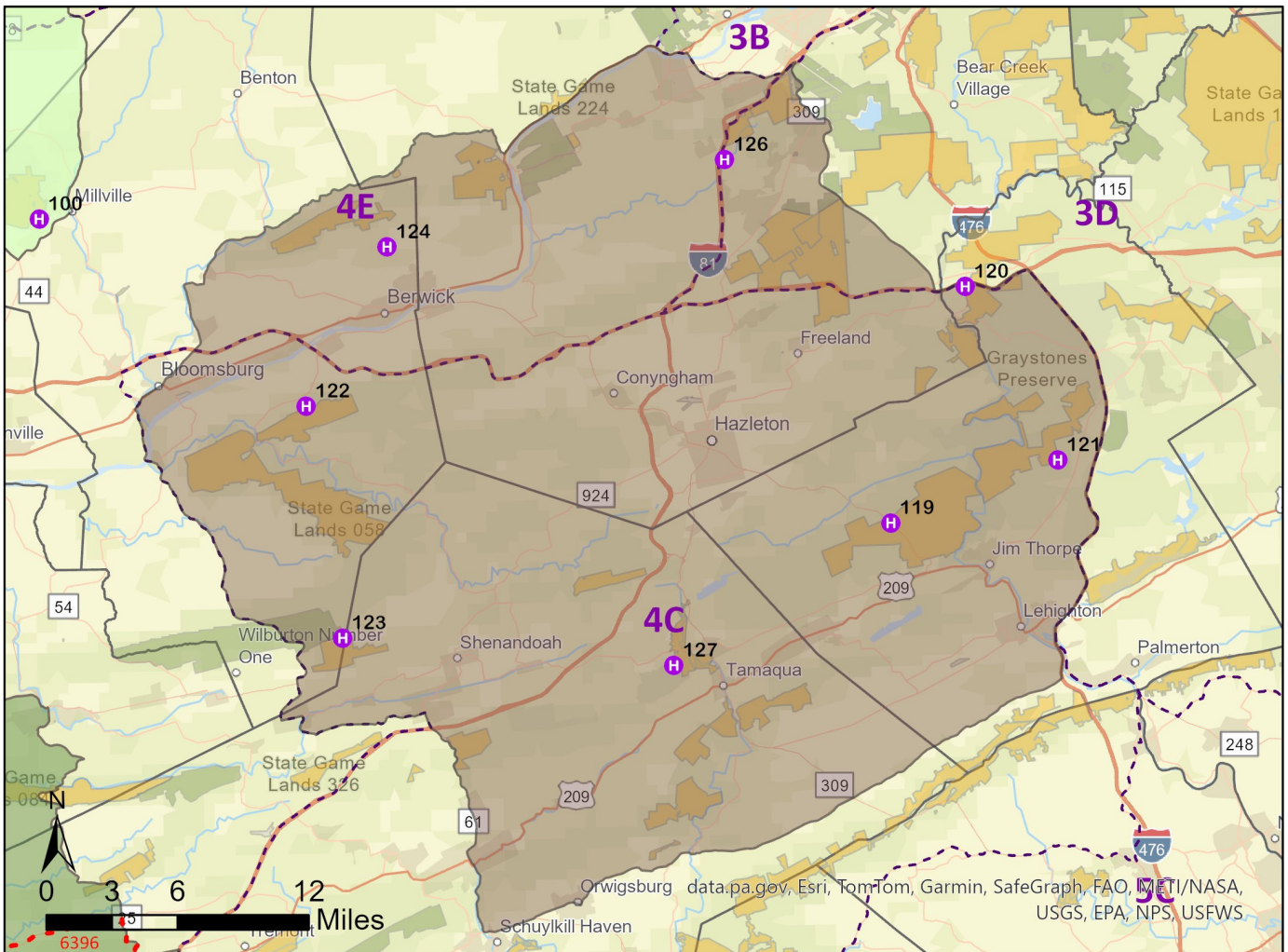
**DMA 9 MAP ON NEXT PAGE**

# PENNSYLVANIA GAME COMMISSION

## Disease Management Area (DMA) 9

### Public Use Head Bin Locations

-  Head Collection Bin
-  DMA 7
-  State Game Lands
-  2025-26 DMAP Units
-  DMA 8
-  State Forest
-  DMA 9
-  Wildlife Management Unit (WMU)
-  County



Head Collection Containers in DMA 10:

COUNTY	INFORMATION
128) Wayne	SGL 159 BUILDING– 2263B Great Bend Turnpike, Honesdale, PA 18431

PENNSYLVANIA GAME COMMISSION

Disease Management Area (DMA) 10  
Public Use Head Bin Locations

