

COMMONWEALTH OF PENNSYLVANIA
PENNSYLVANIA GAME COMMISSION

CHRONIC WASTING DISEASE – DESIGNATION OF DISEASE MANAGEMENT
AREAS AND ENDEMIC STATES AND CANADIAN PROVINCES ORDER #15

EXECUTIVE ORDER

WHEREAS, Chronic Wasting Disease (CWD) is an infectious and progressive neurological disease that is found in, and always proves fatal to, members of the family Cervidae (deer, elk or moose, and other susceptible species, collectively called cervids); and

WHEREAS, There are no known treatments for CWD infection, no vaccines to protect against CWD infection, and no approved tests that can detect the presence of CWD in live cervids; and

WHEREAS, CWD is designated as a “dangerous transmissible disease” of animals by order of the Secretary of Agriculture under 3 Pa.C.S. § 2321(d) (relating to dangerous transmissible diseases); and

WHEREAS, The Game and Wildlife Code (Code) (34 Pa.C.S. §§ 101 *et seq.*) and regulations promulgated thereunder (58 Pa. Code §§ 131.1 *et seq.*) collectively provide broad authority to the PGC to regulate activities relating to the protection, preservation, and management of game and wildlife, including cervids; and

WHEREAS, On March 28, 2017 (effective May 16, 2017), the Commission added 58 Pa. Code § 137.35 (relating to Chronic Wasting Disease Restrictions) to give more permanent status and structure to the CWD requirements and restrictions previously established and maintained over the prior decade by and through executive orders; and

WHEREAS, Section 137.35(d) provides the Executive Director with the authority to designate CWD Disease Management Areas (DMAs) and Established Areas (EAs) within this Commonwealth; and

WHEREAS, Previous executive orders concerning designation of CWD DMAs and EAs within this Commonwealth were issued by the Commission on June 1, 2017, July 24, 2017, October 6, 2017, February 16, 2018, May 21, 2018, October 22, 2018, June 17, 2019, June 2, 2020, May 28, 2021, October 21, 2021, April 5, 2022, August 18, 2022, June 22, 2023, and June 7, 2024; and

WHEREAS, The Commission has determined that further designations of CWD DMAs and EAs are required to implement necessary updates to the Commission's CWD program.

NOW THEREFORE, I, STEPHEN P. SMITH, Executive Director of the Pennsylvania Game Commission, pursuant to the authority vested in me by the Code and regulations promulgated thereunder, do hereby order and direct the following:

1. DMAs within this Commonwealth are designated as set forth below. These DMAs are more graphically illustrated on the maps titled "DMA 2," "DMA 3," "DMA 4," "DMA 5," "DMA 6," "DMA 7," "DMA 8," "DMA 9," "DMA 10" and "DMA OVERVIEW" attached hereto and incorporated by reference herein. Should any conflict exist between the below-listed written boundaries and maps of DMA 2, DMA 3, DMA 4, DMA 5, DMA 6, DMA 7, DMA 8, DMA 9, DMA 10, and DMA OVERVIEW, the written descriptions shall prevail.

- a. DMA 1: Eliminated.
- b. DMA 2: Adams, Bedford, Blair, Cambria, Centre, Clearfield, Cumberland, Franklin, Fulton, Huntingdon, Indiana, Juniata, Mifflin, Perry, Snyder, Somerset, Union, Westmoreland, and York counties, bounded and described as follows:

Begin at the intersection of the west shore of the Susquehanna River and the Maryland State Line, proceed north along the western shore of the Susquehanna River for approximately 119.5 miles to the river bridge (State Highway 45) in Lewisburg. Continue west on State Highway 45 for approximately 44.1 miles to State Highway 144 in Old Fort. Continue south on State Highway 144 for approximately 3.9 miles to Old Route 322 in Potters Mills. Follow Old Route 322 for 0.4 miles to US Highway 322. Merge onto US Highway 322 and proceed west on US Highway 322 for approximately 13.4 miles, merging onto Interstate 99 and continuing west along Interstate 99 for approximately 11.9 miles to Exit 62 and returning to US Highway 322. Continue west on US Highway 322 for another 11.1 miles to State Highway 504 in Phillipsburg. Proceed west on State Highway 504 and follow 0.7 miles to State Highway 53. Continue west on State Highway 53 for 18.7 miles to State Highway 729 in Glen Hope. Proceed north on State Highway 729 for 9.6 miles to Marron Road (SR-3016). Follow Marron Road (ST-3016) west for 2.7 miles to Cherry Corner Road (SR-3005). Continue west on Cherry Corner Road for 0.3 mile to La Jose Road. Follow La Jose Road for 3.6 miles to State Highway 36 in Newburg. Continue south on State Highway 36 for 8.8 miles then turn west onto Sylvis Road. Continue for 5.8 miles to US Highway 219. Follow US Highway 219 south for 2.4 miles to State Highway 240. Continue west on State Highway 240 for 8.5 miles to State Highway 286. Follow State Highway 286 west for 2.5 miles to State Highway 403 in Clymer. Continue south on State Highway 403 for 2.1 miles to Spaulding Road. Follow Spaulding Road south for 3 miles to State Highway 553. Continue west on State Highway 553 for 2 miles to US

Highway 422. Follow US Highway 422 east for 3.4 miles to State Highway 259. Follow State Highway 259 south for 5.4 miles to State Highway 56. Follow State Highway 56 west for 5.5 miles to US Highway 119. Continue south on US Highway 119 for 7.3 miles to US Highway 22. Continue west on US Highway 22 for 11.6 miles to State Highway 981. Follow State Highway 981 south for 9.8 miles to US Highway 30. Follow US Highway 30 east for 23.2 miles to US Highway 219. Proceed south along State Highway 219 for 32.6 miles to the Maryland border. Finally, continue east along the Maryland border 151.6 miles to western shore of the Susquehanna River at the place of beginning.

- c. DMA3: Armstrong, Cambria, Clarion, Clearfield, Elk, Indiana, and Jefferson counties, bounded and described as follows: Begin at the intersection of US Highway 119/22 and State Highway 981 in the town of New Alexandria, proceed north on US Highway 119 for 19.2 miles to State Highway 56. Follow State Highway 56 east for 5.5 miles to State Highway 259. Continue north on State Highway 259 for 5.4 miles to US Highway 422. Follow US Highway 422 west for 3.4 miles to State Highway 553. Follow State Highway 553 east for 2.0 miles to Spaulding Road. Continue north on Spaulding Road for 3 miles to State Highway 403. Follow State Highway 403 north for 2.2 miles to State Highway 286. Continue east on State Highway 286 for 4.5 miles to State Highway 240. Follow State Highway 240 east for 8.5 miles to US Highway 219. Follow US Highway 219 north for 2.4 miles to Sylvis Road. Follow Sylvis Road east for 5.8 miles to State Highway 36. Follow State Highway 36 east for 8.8 miles to La Jose Road (SR-3016) in Newburg. Follow La Jose Road east for 3.6 miles becoming Cherry

Corner Road (SR-3005) for another .3 mile to Marron Road (SR-3016). Proceed northeast on Marron Road for 2.7 miles to State Road 729. Follow State Road 729 north for .9 miles to Old Station Road. Follow Old Station Road (SR-2012) east for 2.4 miles to Douglas Road (SR-3007). Continue east on Douglas Road for .3 miles to New Millport Road (SR-2012) near New Millport. Follow New Millport Road east for 3.1 miles to Turkey Hill Road (SR-2012). Follow Turkey Hill Road 1.5 miles to Faunce Road (SR-2012). Follow Faunce Road east for 3.1 miles becoming Sanborn Road (SR-2012). Continue east on Sanborn Road for 2.4 miles to State Highway 153. Follow State Highway 153 north for 5 miles to Mineral Springs Road (SR-2027). Follow Mineral Springs Road north 3.3 miles to Bigler Cutoff Road. Follow Bigler Cutoff Road north for .1 miles to US Highway 322. Proceed east on US Highway 322 for .7 miles to State Highway 970. Follow State Highway 970 north for 1.5 miles to Interstate Highway 80. Follow I-80 west for 26.4 miles to State Highway 219. Follow State Highway 219 north for 25 miles to State Highway 948. Follow State Highway 948 for 0.3 miles to the Clarion River in Ridgway. Follow the Clarion River west for 28.1 miles to Belltown Road. Continue south on Belltown Road for 0.05 mile to State Highway 949. Proceed west on State Highway 949 for 16.1 miles to US Highway 322 in Corsica. Follow US Highway 322 east for 0.3 miles to State Highway 949. Follow State Highway 949 south for 4.2 miles to State Highway 28. Follow State Highway 28 south for 13.2 miles to State Highway 839 in New Bethlehem. Follow State Highway 839 south for 21.3 miles to State Highway 85. Follow State Highway 85 west for 12.7 miles to State Highway 28/66. Continue south on State Highway 28 for 1 mile.

Continue onto US Highway 422 for 9.4 miles to the point it meets Buffalo Creek near the town of Worthington. Follow Buffalo Creek south for 20.2 miles where it meets the Allegheny River to a point abeam State Highway 356. Continue east on State Highway 356 for 5.5 miles then follow State Highway 56 east for 4.1 miles to the eastern shore of the Kiskiminetas River near the town of Vandergrift. Follow the eastern shore of the Kiskiminetas River east for 15.6 miles to the Washington Street bridge (State Highway 981) in Saltsburg. Follow State Highway 981 south for 7.7 miles to US Highway 119 at the place of beginning.

- d. DMA 4: Lancaster County, bounded and described as follows: Beginning in the city of Litiz, at the intersection of State Highway 772 and State Highway 501, proceed north on State Highway 501 for 5.1 miles to US Highway 322. Proceed west on US Highway 322 for 1.2 miles to Interstate 76 (Pennsylvania Turnpike). Continue east on Interstate 76 (Pennsylvania Turnpike) for 16.9 miles to State Highway 625 (Reading Road). Follow State Highway 625 (Reading Road) south for 6.4 miles to State Highway 23. Continue west on State Highway 23 for 0.3 miles to State Highway 897. Follow State Highway 897 south for 0.6 miles to U.S. Highway 322 (28th Division Highway). Follow U.S. Highway 322 (28th Division Highway) east for 0.1 miles to State Highway 897 (Spring Valley Road). Follow State Highway 897 south for 4.2 miles to Seldomridge Road (T-513). Continue east on Seldomridge Road (T-513) for 1.8 miles to Cambridge Road (T-907). Follow Cambridge Road south for 1.6 miles to State Highway 340 (Old Philadelphia Pike). Continue west on State Highway 340 (Old Philadelphia Pike) for 0.4 miles to State Highway 897 (White Horse Road). Continue south on State

Highway 897 for 4.0 miles to U.S. Highway 30. Follow U.S. Highway 30 west for 0.3 miles to State Highway 41 (Newport Pike). Continue south on State Highway 41 for 3.0 miles to Pine Creek. Follow Pine Creek south for 0.9 miles to East Branch Octoraro Creek. Continue south on East Branch Octoraro Creek for 18.2 miles to Octoraro Creek. Follow Octoraro Creek south along the Chester/Lancaster County border for 13.1 miles to the intersection with the Maryland border. Continue west along the Maryland border for 4.7 miles to the shoreline of the Susquehanna River. Proceed north along the Susquehanna River shorelines for 26.0 miles to a point abeam State Highway 999. Continue east on State Highway 999 for 7.0 miles to State Highway 741 (Rohrerstown Road). Follow State Highway 741 (Rohrerstown Road) north for 3.6 miles to U.S. Highway 30 (Lincoln Highway). Continue east on U.S. Highway 30 for 2.4 miles to State Highway 4011 (Fruitville Pike). Follow State Highway 4011 (Fruitville Pike) north for 6.7 miles to State Highway 772 (Orange Street). Continue east on State Highway 772 east for 3.6 miles to State Highway 501 at the place of beginning.

- e. DMA 5: Warren County, bounded and described as follows: Beginning at the intersection of the Allegheny River and the New York State Line, proceed south on the west shore of the river for 27.8 miles to the bridge at Pennsylvania Ave East (Business U.S. Highway 6) in Warren. Continue south on Pennsylvania Ave East (Business U.S. Highway 6) for 0.1 mile to U.S. Highway 6. Follow U.S. Highway 6 west for 11.6 miles to West Main St (State Highway 27) in Youngsville. Continue northeast on West Main St (State Highway 27) for 0.5 mile to State Highway 27 (Matthews Run Road). Follow State Highway 27 (Matthews Run Road) north for

7.2 miles to State Highway 69 (Jackson Run Road). Continue north on State Highway 69 (Jackson Run Road) for 3 miles to State Highway 957 (Main St) in Sugar Grove. Follow State Highway 957 east for 0.2 miles to Jamestown Street. Continue north on Jamestown Street for 0.7 miles to where Jamestown Street becomes Busti Road. Continue north on Busti Road for 1 mile to the New York border. Finally, follow the New York border east for 18.1 miles to the Allegheny River at the place of beginning.

f. DMA 6: Clearfield, Elk, and Jefferson Counties, bounded and described as follows: Beginning in the town of Kersey at the intersection of Chicken Hill Road and State Highway 948, proceed south on Chicken Hill Road for 0.9 mile where the road becomes South Kersey Road. Follow South Kersey Road south for 1.4 miles where the road becomes Boone Mountain Road. Continue south on Boone Mountain Road for 6.5 miles to State Highway 153. Follow State Highway 153 south for 4.9 miles to State Highway 255. Follow State Highway 255 south for 9.5 miles to Interstate 80. Follow Interstate 80 west for 4.4 miles to State Highway 219. Continue north on State Highway 219 for 21.1 miles to State Highway 948. Follow State Highway 948 east for 5.3 miles to Chicken Hill Road in Kersey at the place of beginning.

g. DMA 7: Columbia, Lycoming, Montour, Northumberland, and Sullivan Counties, bounded and described as follows: Beginning in the town of Trout Run at the intersection of State Highway 15 and State Highway 14, proceed north on State Highway 14 for 4.5 miles to Field Station Road. Continue southeast on Field

Station Road for 2.3 miles to Beech Valley Road. Follow Beech Valley Road southeast for 0.9 mile to Calvert Road. Follow Calvert Road south for 0.1 mile to Southard Road. Continue east on Southard Road for 2.5 miles to Wallis Run Road. Follow Wallis Run Road east for 7.6 miles to Hoppestown Road in the town of Proctor. Continue northeast on Hoppestown Road for 5.9 miles to State Highway 87 at Hillsgrove. Follow State Highway 87 south for 2.4 miles to Ogdonia Road in the town of Ogdonia. Continue south on Ogdonia Road for 3.0 miles Loyalsock Trail Road. Continue south on Loyalsock Trail Road, becoming State Route 3005, then State Route 2083, and then Deer Lake Road for 6.6 miles to State Highway 220. Continue east on State Highway 220 for 5.6 miles to State Highway 42 in Beech Glen. Follow State Highway 42 south for 17.1 miles to State Highway 254 in Millville. Continue southwest on State Highway 254 for 3.5 miles to State Highway 44 in Jerseytown. Follow State Highway 44 west for 10.8 miles to State Highway 54 in Turbotville. Continue northwest on State Highway 54 for 10.9 miles to State Highway 15. Follow State Highway 15 northwest for 6.5 miles to Interstate 180 in Williamsport. Continue west on Interstate 180 for 2.0 miles returning to State Highway 15 at Exit 29. Continuing north on State Highway 15 for 12.7 miles to State Highway 14 in Trout Run at the place of beginning.

- h. DMA8: Dauphin, Lebanon, Northumberland, and Schuylkill Counties, bounded and described as follows: Beginning at the intersection of State Highway 743 and Interstate 76, follow Interstate 76 west 10.3 miles to the point it meets the west shore of the Susquehanna River. Follow the west shore of the Susquehanna River north for 59.5 miles to State Highway 147 in Shamokin Dam. Continue east

on State Highway 147 for 0.47 mile to State Highway 61. Follow State Highway 61 east for 2.6 miles to State Highway 890. Continue southeast on State Highway 890 for 9.0 miles to State Highway 225. Continue east on State Highway 225 for 6.2 miles to State Highway 61. Follow State Highway 61 southeast for 0.3 mile to State Highway 125. Continue south on State Highway 125 for 21.0 miles to Interstate 81. Follow Interstate 81 south for 27.6 miles to State Highway 743. Turn left onto State Highway 743 south for 12 miles to Interstate 76 at the place of beginning.

- i. DMA9: Carbon, Columbia, Luzerne, and Schuylkill Counties, bounded and described as follows: Beginning at Interstate 476 and State Highway 895, follow State Highway 895 west for 20.3 miles. Continue west on State Highway 443 for 7.4 miles then proceed onto State Highway 443/61 and continue north. Follow State Highway 61 north for 25 miles and continue straight onto State Highway 42 for 17.3 miles to U.S. Highway 11. Follow U.S. Highway 11 for 1.9 miles to State Highway 487. Continue north on State Highway 487 for 10.7 miles to Winding Road (SR 1020). Follow Winding Road for 5.3 miles to Waterton Road (SR 4006). Continue straight onto Waterton Road for 3.6 miles to Sunshine Road (SR 4010). Follow Sunshine Road (SR 4010) east for 3.8 miles to State Highway 239. Follow State Highway 239 south for 2.6 miles to U.S. Highway 11. Follow U.S. Highway 11 north for 10.1 miles to where it becomes State Highway 29. Follow State Highway 29 south for 4.9 miles to Interstate 81. Follow Interstate 81 north for 0.5 mile to State Highway 309. Continue south on State Highway 309 for 2.9 miles to State Highway 437. Follow State Highway 437 south for 11.6 miles to Interstate

80. Follow Interstate 80 east for 4.6 miles to Interstate 476. Follow Interstate 476 south for 21.1 miles to State Highway 895 at the place of beginning.

- j. DMA10: Wayne County, bounded and described as follows: Beginning at the intersection of State Highway 371 and State Highway 247, follow State Highway 247 north for 11.5 miles to State Highway 370. Continue east on State Highway 370 for 6.2 miles to the intersection with State Highway 191 to a point abeam Shehawken Creek. Follow Shehawken Creek north 0.17 mile to where it meets the West Branch Delaware River. Follow the West Branch Delaware River east for 0.46 mile to where it meets the Delaware River. Follow the Delaware River south for 32.4 miles to the Cochection Turnpike bridge (State Highway 371). Continue west on State Highway 371 for 15.9 miles to the intersection with State Highway 247 at the place of beginning.

2. Established areas within this Commonwealth are designated as set forth below. The sole EA is more graphically illustrated on the map titled “Established Area In DMA 2” attached hereto and incorporated by reference herein. Should any conflict exist between the below-listed written boundary and map of “Established Area In DMA 2”, the written descriptions shall prevail.

- a. Established Area in DMA 2: Bedford, Blair, Franklin, Fulton, and Huntingdon counties, bounded and described as follows: Beginning at the intersection of State Highway 75 (Fort Loudon Road) and the Maryland State Line near Kasiesville, proceed north on State Highway 75 (Fort Loudon Road) for 13.9 miles to US Highway 30. Follow US Highway 30 west for 7.8 miles to US Highway 522 just north of McConnellsburg. Continue north on US Highway 522 for 37.5 miles to

US Highway 22. Follow US 22 west for 41.7 miles to Old Route 22 in Duncansville. Continue west on Old Route 22 for 2.0 miles to Valley Forge Road. Follow Valley Forge Road south for 3.4 miles to the Poplar Run Road. Continue southeast on Poplar Run Road for 0.5 mile to Knob Run Road. Follow Knob Run Road southwest for 4.3 miles where the road becomes Knob Road. Continue south on Knob Road for 3.4 miles to the Bedford/Blair County Line, where the road becomes Blue Knob Road. Follow Blue Knob Road south for approximately 1.0 mile to State Forrest Road in Blue Knob State Park. Follow State Forrest Road south for 3.5 miles where the road becomes Pavia Road. Continue south on Pavia Road for 0.25 miles to State Highway 869. Follow State Highway 869 south for 3.4 miles to State Highway 96. Continue south on State Highway 96 south for 14.4 miles to US Highway 30 in Schellsburg. Follow US Highway 30 east 4.75 miles to State Highway 31. Follow State Highway 31 southwest for 3.4 miles to State Highway 96 in Manns Choice. Continue south on State Highway 96 for 22.25 miles to the Maryland border. Finally, follow along Maryland border east for 47.0 miles to State Highway 75 at place of beginning.

3. The previous executive order concerning designation of CWD DMAs and CWD-endemic States and Canadian Provinces within this Commonwealth that was issued by the Commission on June 7, 2024, and published in the *Pennsylvania Bulletin* on June 29, 2024, at 54 Pa.B. 3750, is hereby rescinded in its entirety and replaced by this Order.

4. This Order is effective immediately and shall remain in effect until rescinded or modified by subsequent order.

Given under my hand and seal of the Pennsylvania Game Commission on this 14th day
of APRIL, 2025.

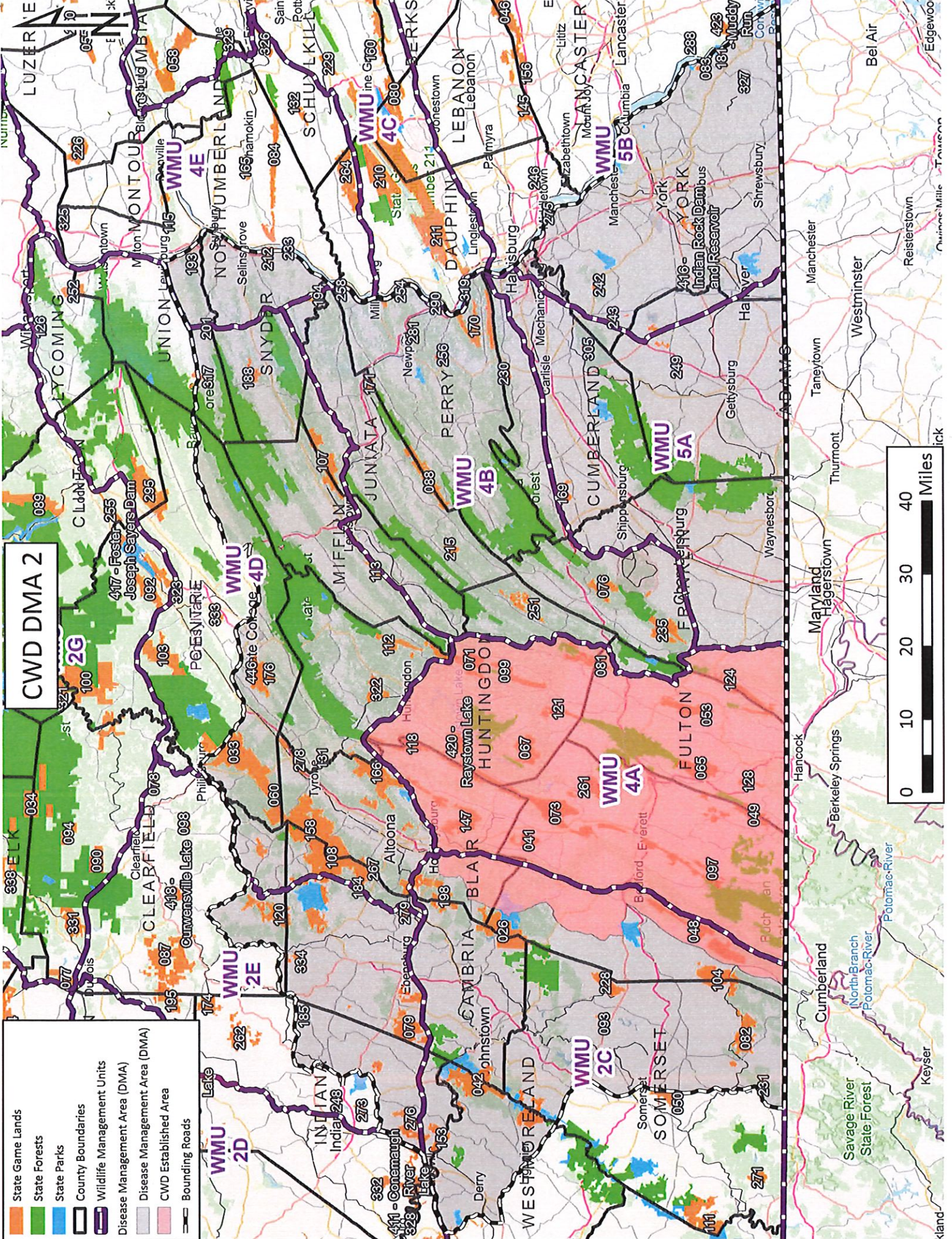
Attest:

Jason A. Bary

Stephen P. Smith

Stephen P. Smith
Executive Director

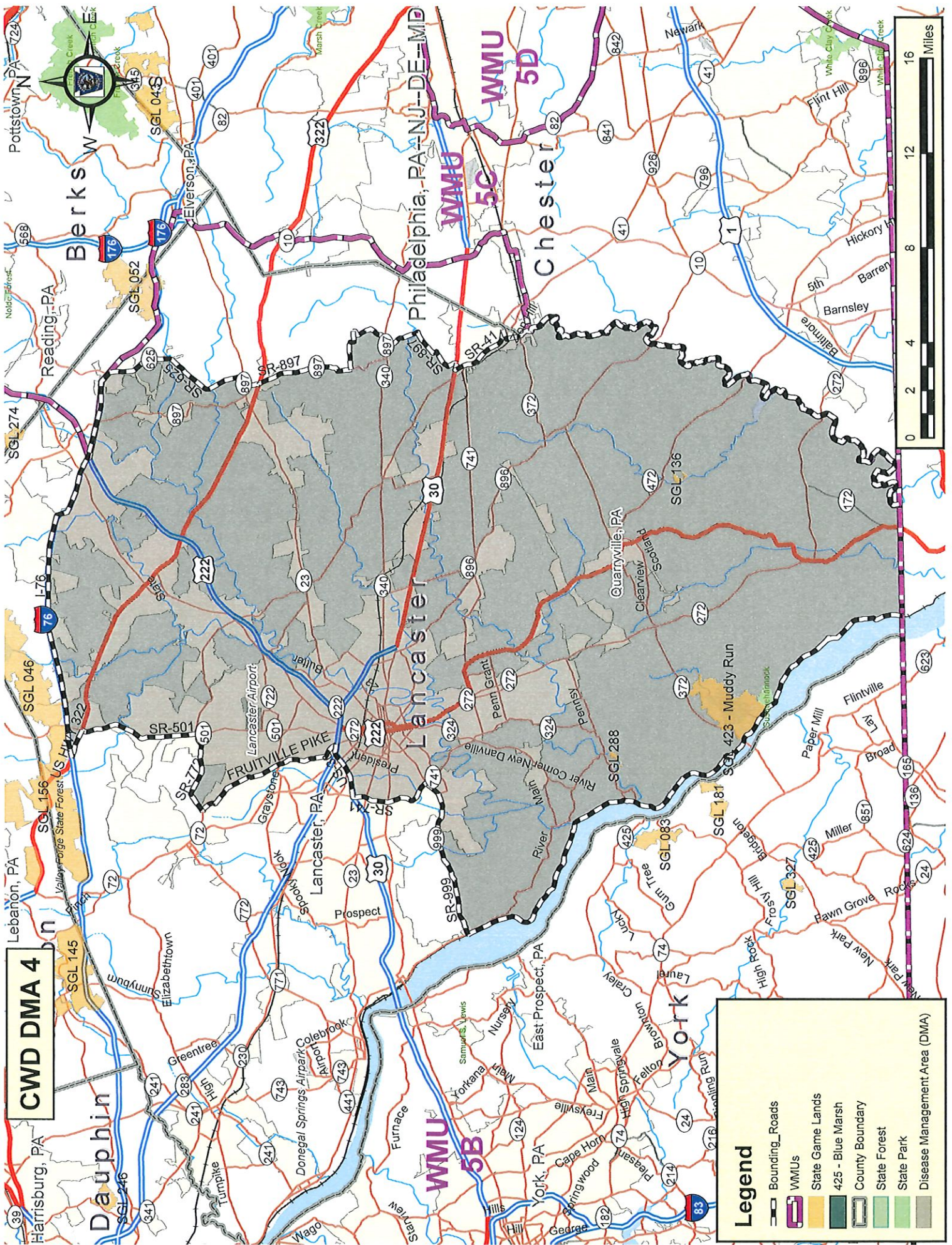




CWD DMA 2



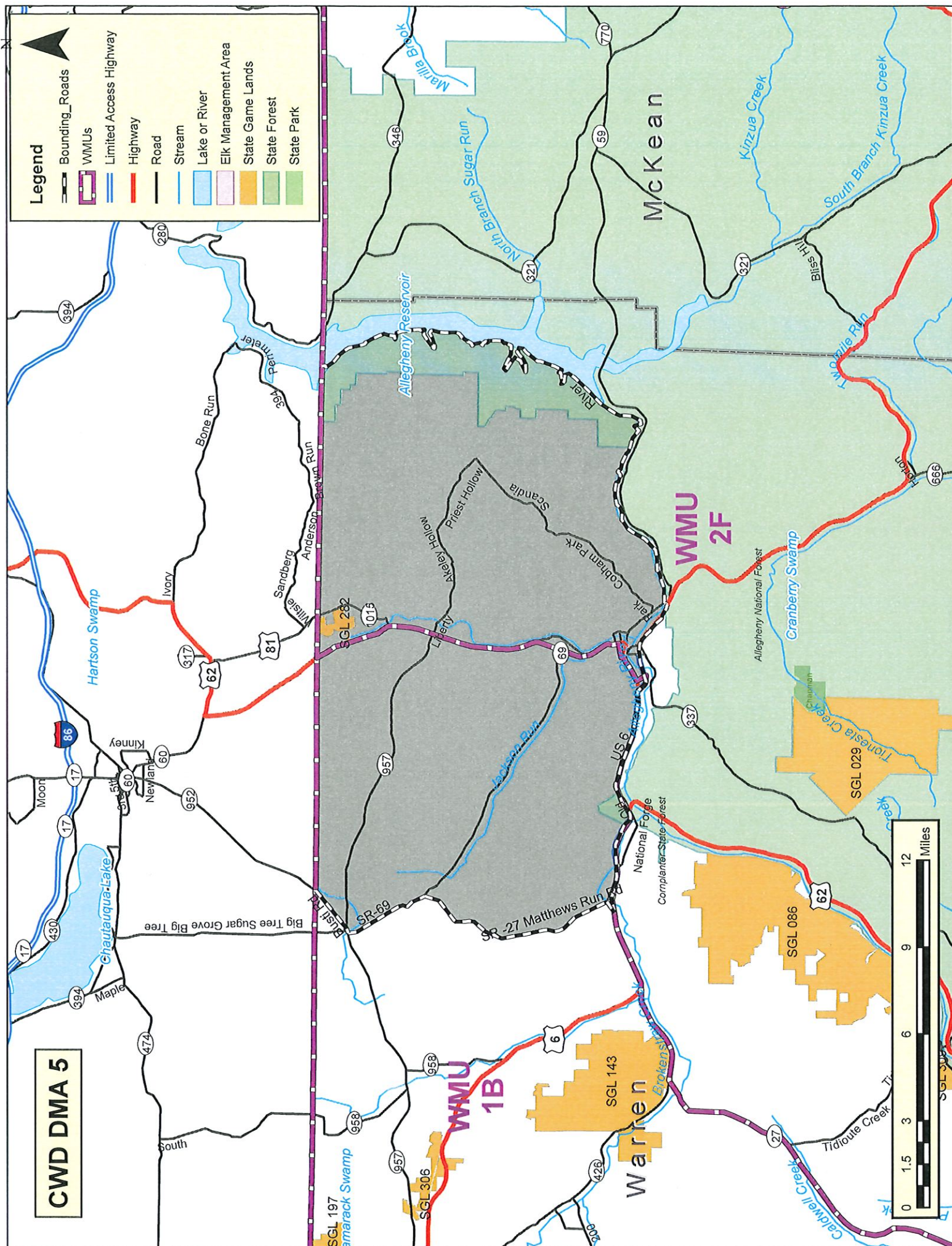
- State Game Lands
- State Forests
- State Parks
- County Boundaries
- Wildlife Management Units
- Disease Management Area (DMA)
- CWD Established Area
- Bounding Roads

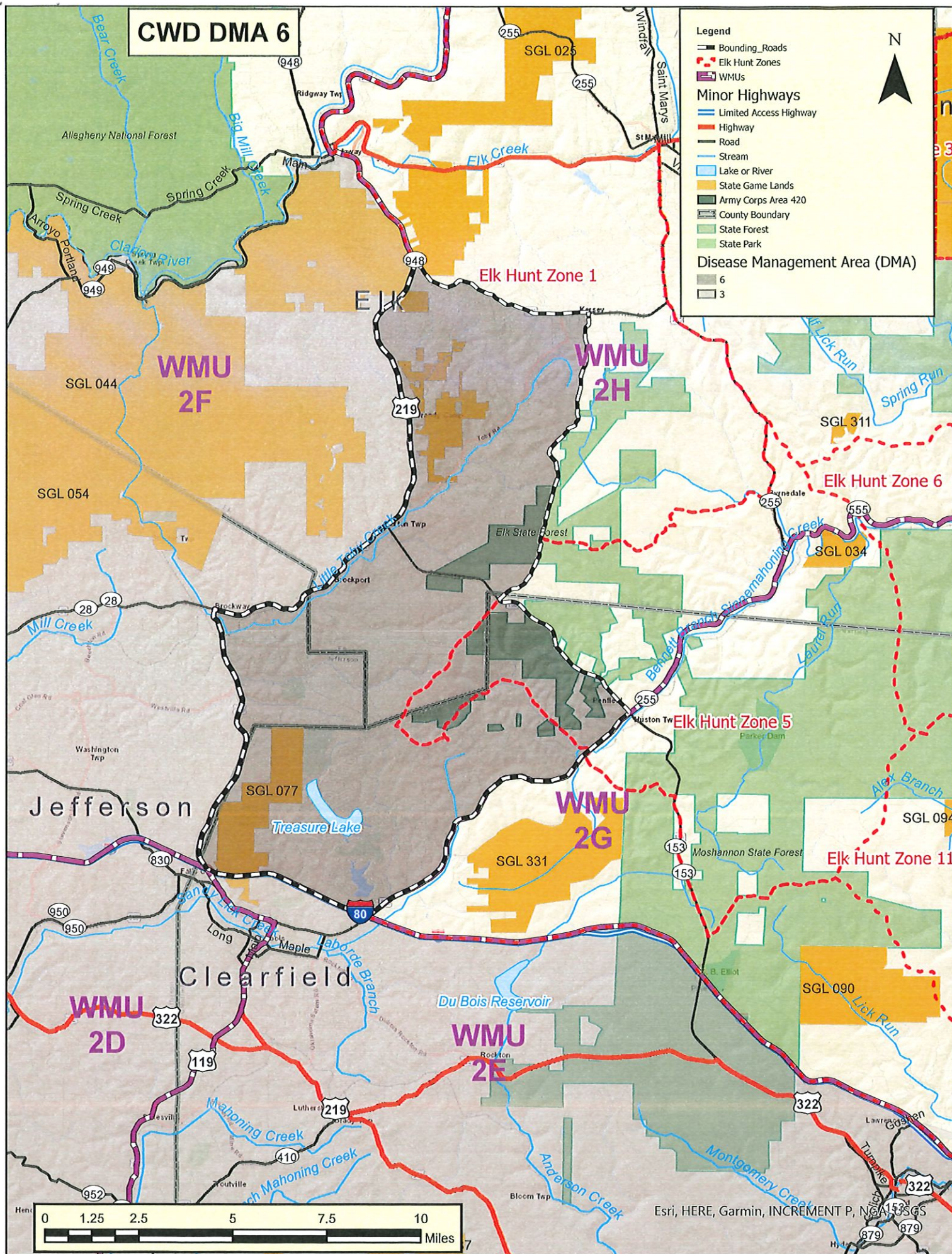


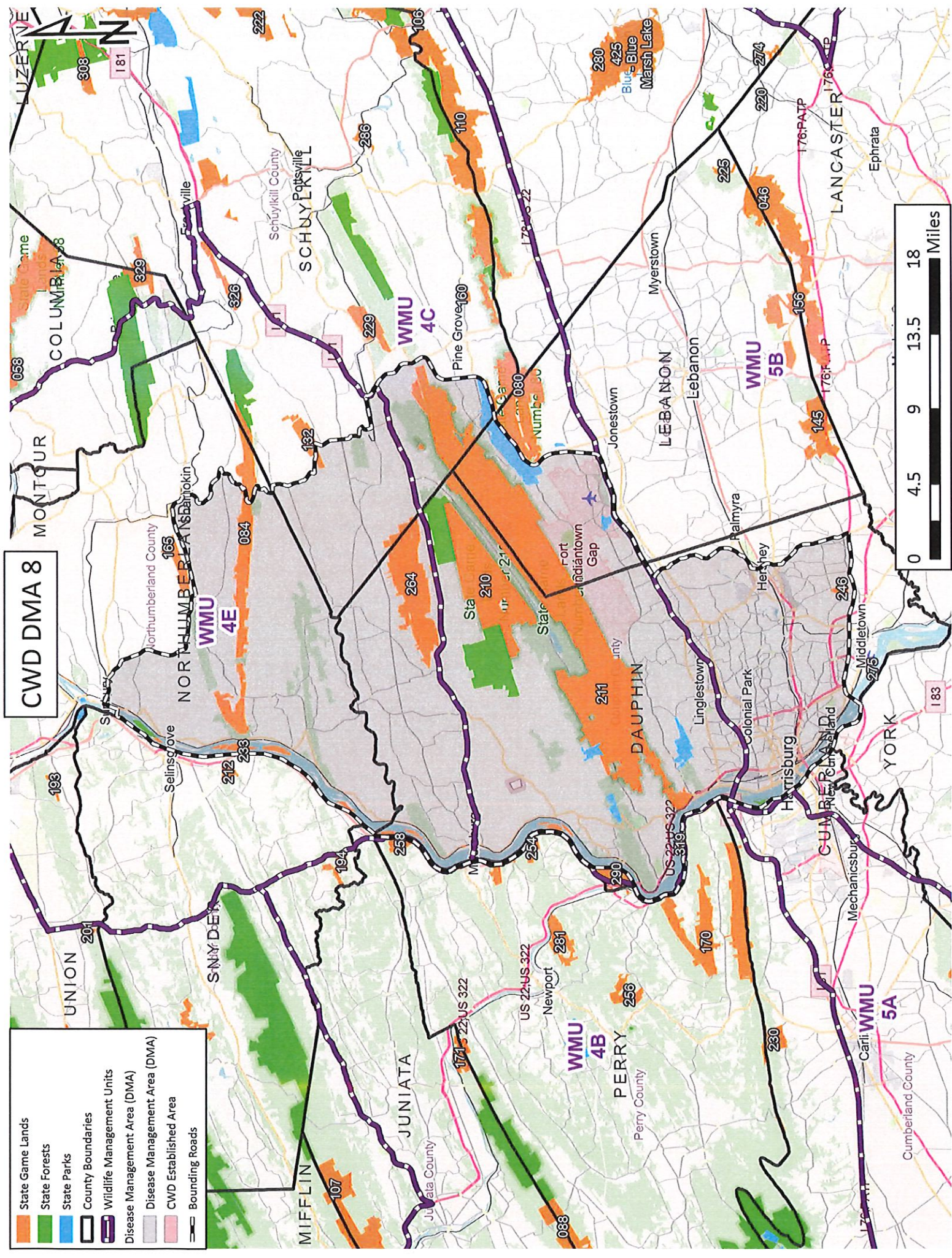
CWD DMA 4

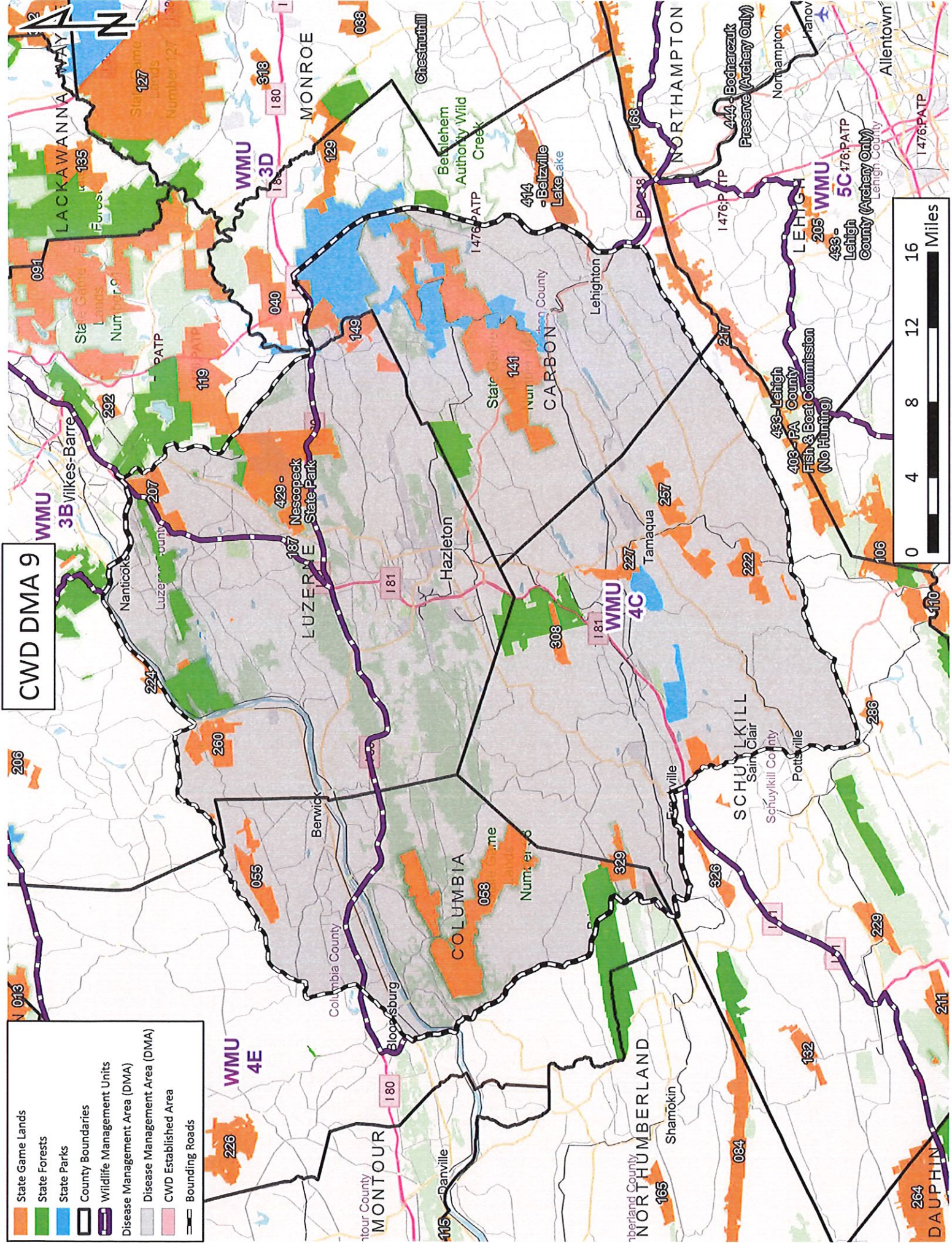
Legend

- Bounding_Roads
- WMUs
- State Game Lands
- 425 - Blue Marsh
- County Boundary
- State Forest
- State Park
- Disease Management Area (DMA)



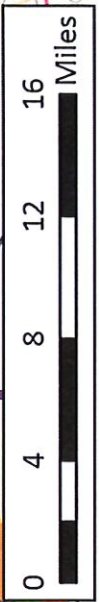


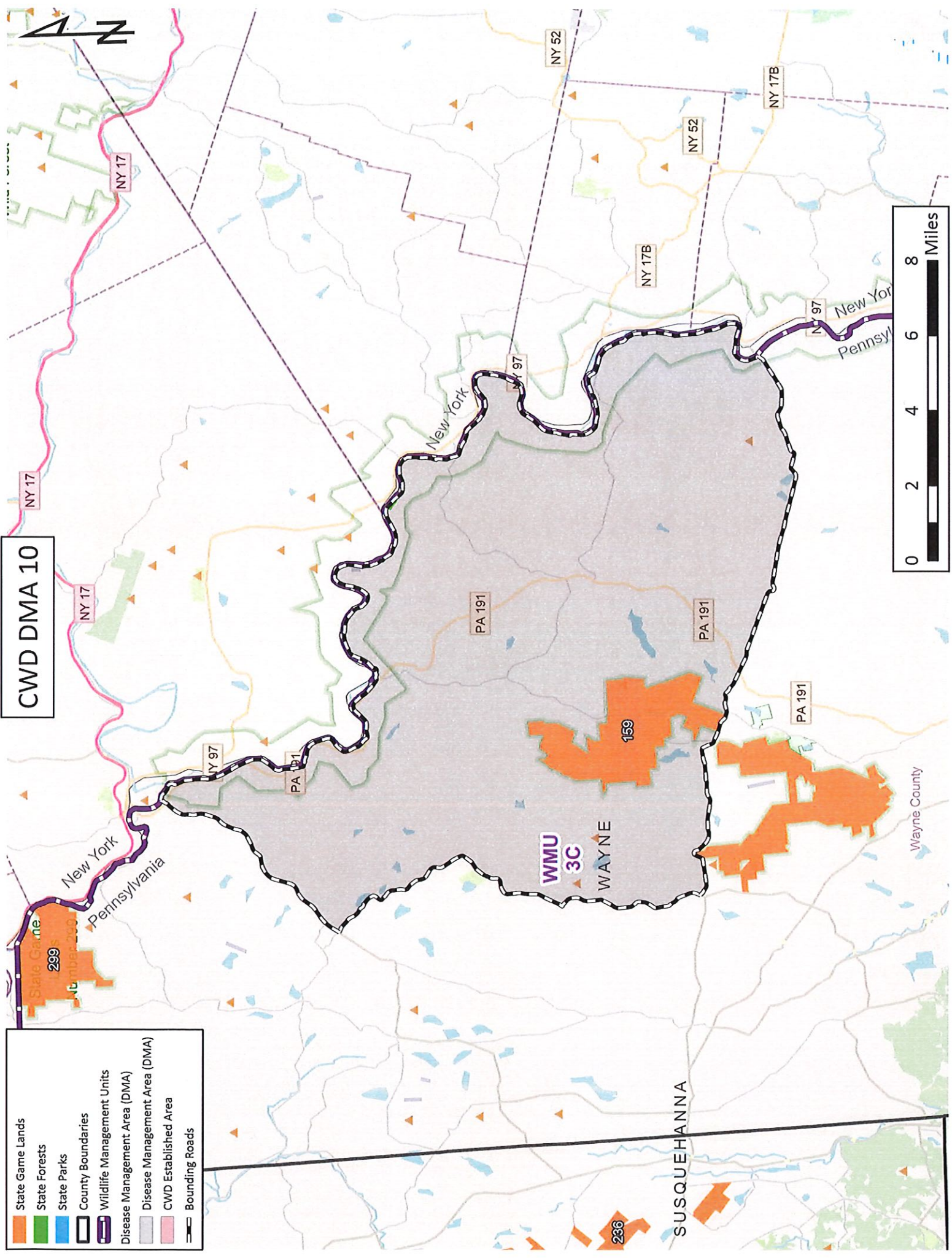




- State Game Lands
- State Forests
- State Parks
- County Boundaries
- Wildlife Management Units
- Disease Management Area (DMA)
- CWD Established Area
- Bounding Roads

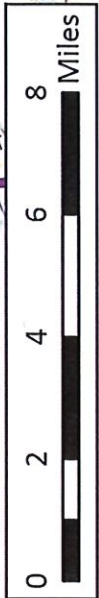
CWD DMA 9



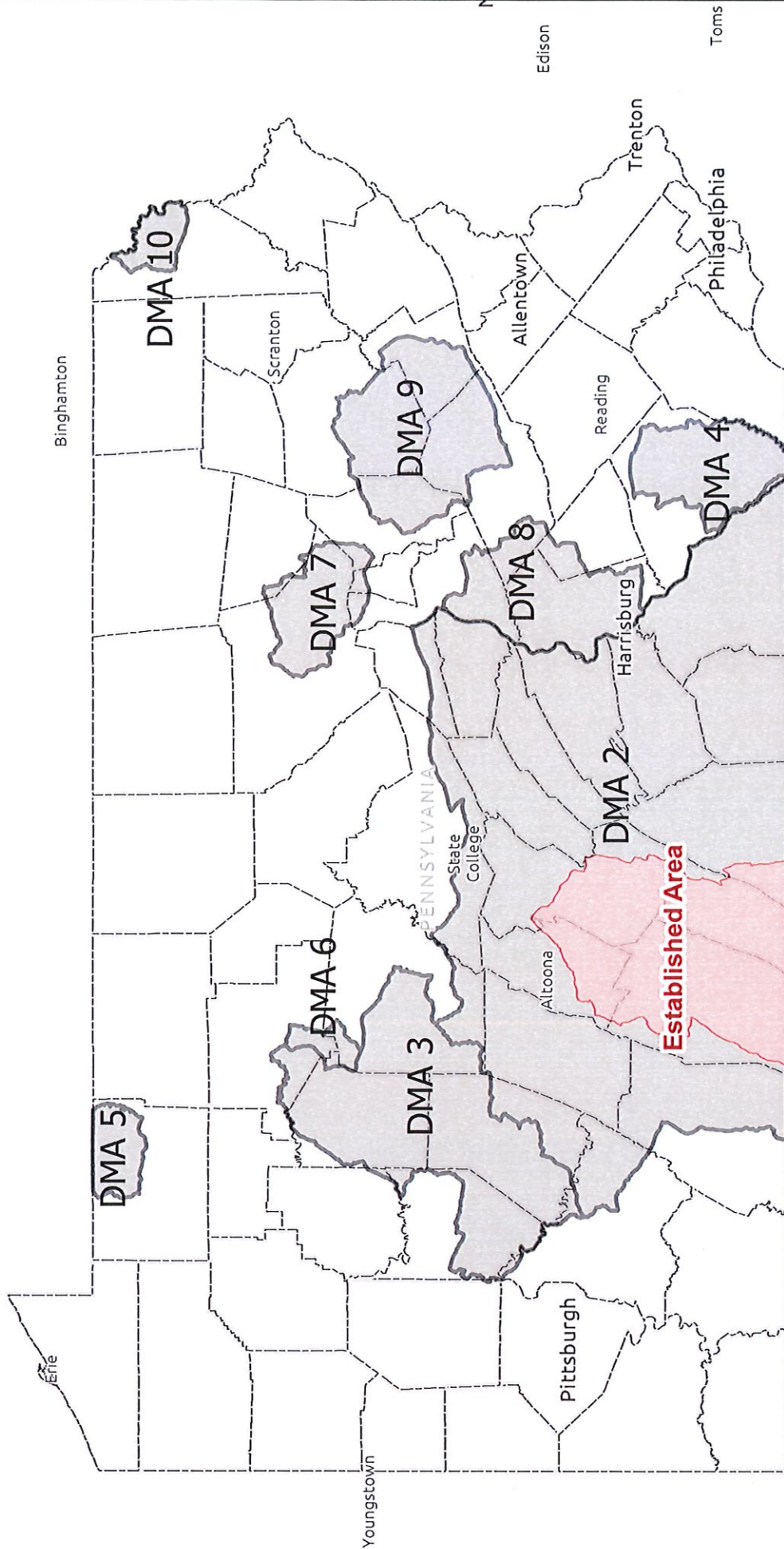


CWD DMA 10

- State Game Lands
- State Forests
- State Parks
- County Boundaries
- Wildlife Management Units
- Disease Management Area (DMA)
- Disease Management Area (DMA)
- CWD Established Area
- Bounding Roads



DMA OVERVIEW MAP



Baltimore

Centre County Government, data.pa.gov, Esri, TomTom, Garmin, NOAA, USGS, EPA, NPS, USFWS