

PENNSYLVANIA WILDLIFE ACTION MAP

PLAN • ACT • SHARE

Your gateway to Species of Greatest Conservation Need planning & implementation!

Pennsylvania's Wildlife Action Map (WAM) combines updated Species of Greatest Conservation Need (SGCN)¹ distribution data with expert-defined species needs and a reporting tool to support conservation planning, action, and sharing in places where you live or work.



<https://wildlifeactionmap.pa.gov>



PENNSYLVANIA
WILDLIFE ACTION PLAN



Scarlet Tanager, J. Dingel, PGC

FEATURING TWO TOOLS

CONSERVATION OPPORTUNITY AREA TOOL (COA) - *Planning*



Use the COA Tool to:

- Learn about SGCN in your area of interest
- Find SGCN habitat associations
- Discover conservation opportunities to help SGCN²
- View SGCN best practice references



Info sharing, George Gress

PLAN

CONSERVATION ACTION TRACKER (CAT) - *Implementation*



Use the CAT to:

- Track your conservation actions for SGCN & their habitats
- Explore other actions supporting SGCN, statewide³
- Share project information with partners
- Contribute to a Conservation Impacts Dashboard



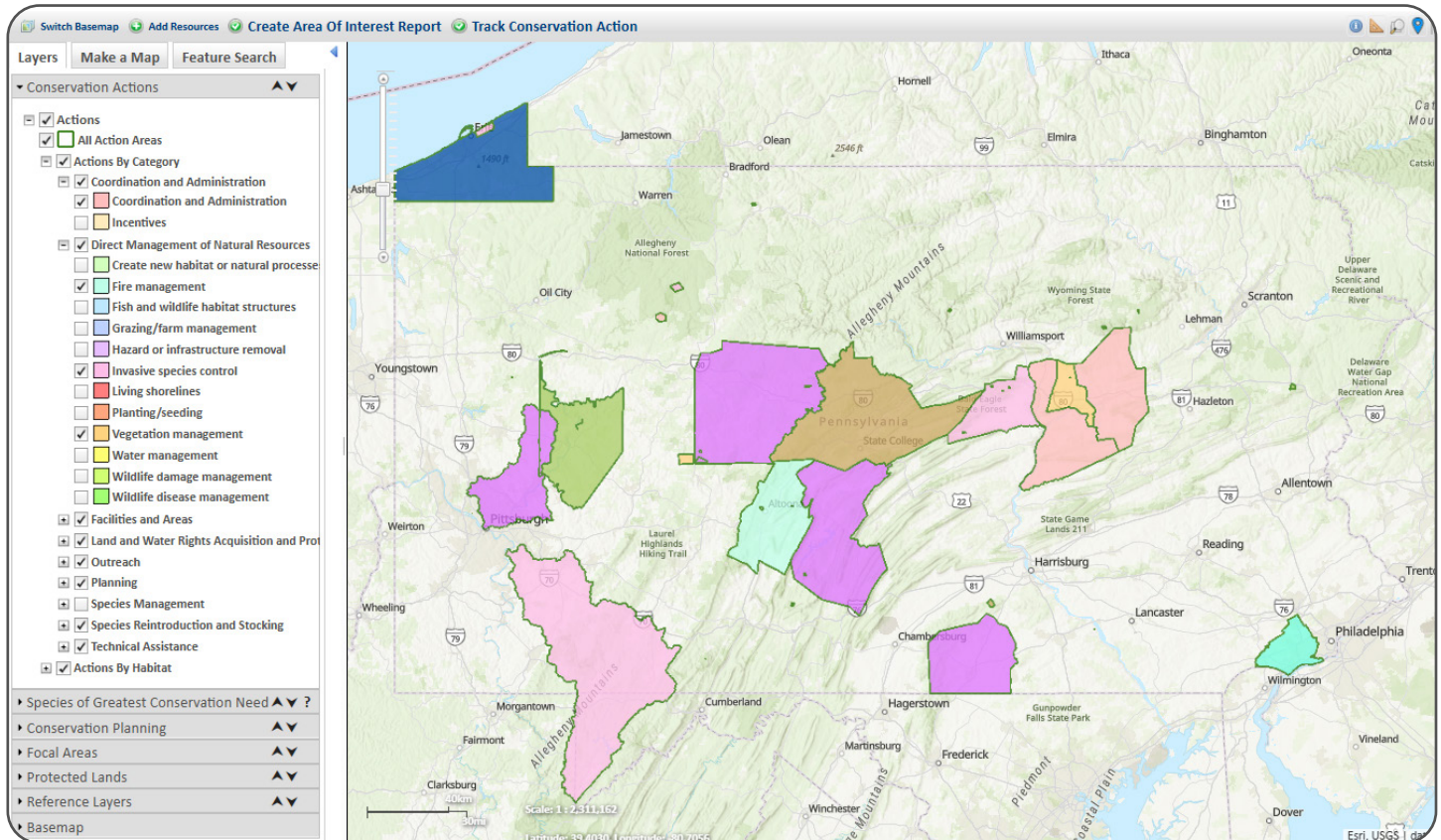
Riparian tree planting, PFBC

ACT

¹Species in the Pennsylvania Wildlife Action Plan; ²For greatest benefits to species and habitats, we encourage contacting a Pennsylvania Game Commission or Pennsylvania Fish and Boat Commission Biologist before taking action. See last page of the COA Tool report for contacts in your area of interest; ³Contingent on data sensitivity and user visibility settings.

VIEW PROJECT TYPES-STATEWIDE

Share and view your conservation actions and view where other actions are being conducted across the state, including “Actions by Category” and “Actions by Habitat”, at the user-authorized scale (county or watershed).



HOW DO I GET STARTED?

New users must register for a free account to create and save projects, and generate reports. To get started, see the User Guide and Help menu.



<https://wildlifeactionmap.pa.gov>



Peregrine Falcon chicks, Mike Scafini, PGC



Birds and mammals:
Conservation Planning Coordinator
Wildlife Recovery Division
Bureau of Wildlife Management
pgcswap@pa.gov



**Fish, reptiles, amphibians
and aquatic invertebrates:**
Conservation Coordinator
Bureau of Fisheries
ra-fbswap@pa.gov



Credit: The Wildlife Action Map was developed by the Pennsylvania Game Commission and Pennsylvania Fish and Boat Commission with support from State Wildlife Grant funds administered by the U.S. Fish and Wildlife Service, Office of Conservation Investment, Northeast Regional Office, Hadley, MA. Developmental technical support was provided by Western Pennsylvania Conservancy, Pennsylvania Department of Conservation and Natural Resources, and NatureServe.