

Annual Deer Population Report & 2026-27 Antlerless License Allocation Recommendations



*Pennsylvania Game Commission
Bureau of Wildlife Management
Deer and Elk Section*

Summary of 2026-27 Antlerless Allocations to Achieve Deer Plan Goals

WMU	Population Trend	Population Objective	2025-26 Allocation	2026-27 Allocation	Comments
1A	Stable	Reduce	46,000	52,000	Increase antlerless harvest to reduce population. <i>CWD detection within 10 mi.</i>
1B	Stable	Reduce	44,000	44,000	Maintain previously increased harvest target to reduce population. <i>CWD detection within 10 mi.</i>
2A	Stable	Reduce	44,000	49,000	Increase antlerless harvest to reduce population. <i>Agency leadership guidance.</i>
2B	Increasing	Reduce	59,000	62,000	Maintain previously increased harvest target to reduce population. <i>Increased allocation needed to meet harvest target based on updated license success. CWD.</i>
2C	Stable	Reduce	93,000	117,000	Increase antlerless harvest to reduce population. <i>CWD.</i>
2D	Stable	Reduce	96,000	112,000	Increase antlerless harvest to reduce population. <i>CWD.</i>
2E	Stable	Reduce	51,000	63,000	Increase antlerless harvest to reduce population. <i>CWD.</i>
2F	Stable	Reduce	51,000	67,000	Increase antlerless harvest to reduce population. <i>CWD.</i>
2G	Stable	Reduce	57,000	57,000	Maintain previously increased harvest target to reduce population. <i>CWD detection within 10 mi.</i>
3A	Stable	Stabilize	21,000	21,000	Keep population stable.
3B	Stable	Reduce	53,000	53,000	Maintain previously increased harvest target to reduce population. <i>CWD.</i>
3C	Stable	Reduce	57,000	57,000	Maintain previously increased harvest target to reduce population. <i>CWD.</i>
3D	Stable	Reduce	52,000	52,000	Maintain previously increased harvest target to reduce population. <i>CWD detection within 10 mi.</i>
4A	Stable	Reduce	64,000	64,000	Maintain previously increased harvest target to reduce population. <i>CWD. Continue extended antlerless-only firearms season.</i>
4B	Stable	Reduce	60,000	71,000	Increase antlerless harvest to reduce population. <i>CWD.</i>
4C	Stable	Reduce	51,000	51,000	Maintain previously increased harvest target to reduce population. <i>CWD. Continue extended antlerless-only firearms season.</i>
4D	Stable	Reduce	83,000	120,000	Increase antlerless harvest to reduce population. <i>CWD. Continue extended antlerless-only firearms season.</i>
4E	Decreasing	Reduce	61,000	61,000	Maintain previously increased harvest target to continue population reduction. <i>CWD.</i>
5A	Stable	Reduce	46,000	65,000	Increase antlerless harvest to reduce population. <i>CWD. Continue extended antlerless-only firearms season.</i>
5B	Stable	Reduce	86,000	86,000	Maintain previously increased harvest target to reduce population. <i>CWD.</i>
5C	Stable	Reduce	98,000	101,000	Maintain previously increased harvest target to reduce population. <i>CWD detection within 10 mi.</i>
5D	Stable	Reduce	39,000	44,000	Maintain previously increased harvest target to reduce population. <i>Increased allocation needed to meet harvest target based on updated license success. Agency leadership guidance.</i>

More information on the deer management program and data and methods used to assess progress towards management goals can be found in the White-tailed Deer Management Plan, visit the Game Commission's website, www.pa.gov/pgc.

Deer Management Goals

Deer management goals direct Game Commission staff in formulating deer management recommendations. Current management goals that directly affect antlerless allocations are to manage deer for healthy deer, healthy forest habitat, and acceptable levels of deer-human conflicts. These goals were identified by a group of public stakeholders and continue to be supported by a clear majority of Pennsylvania citizens and hunters (Figure 1).

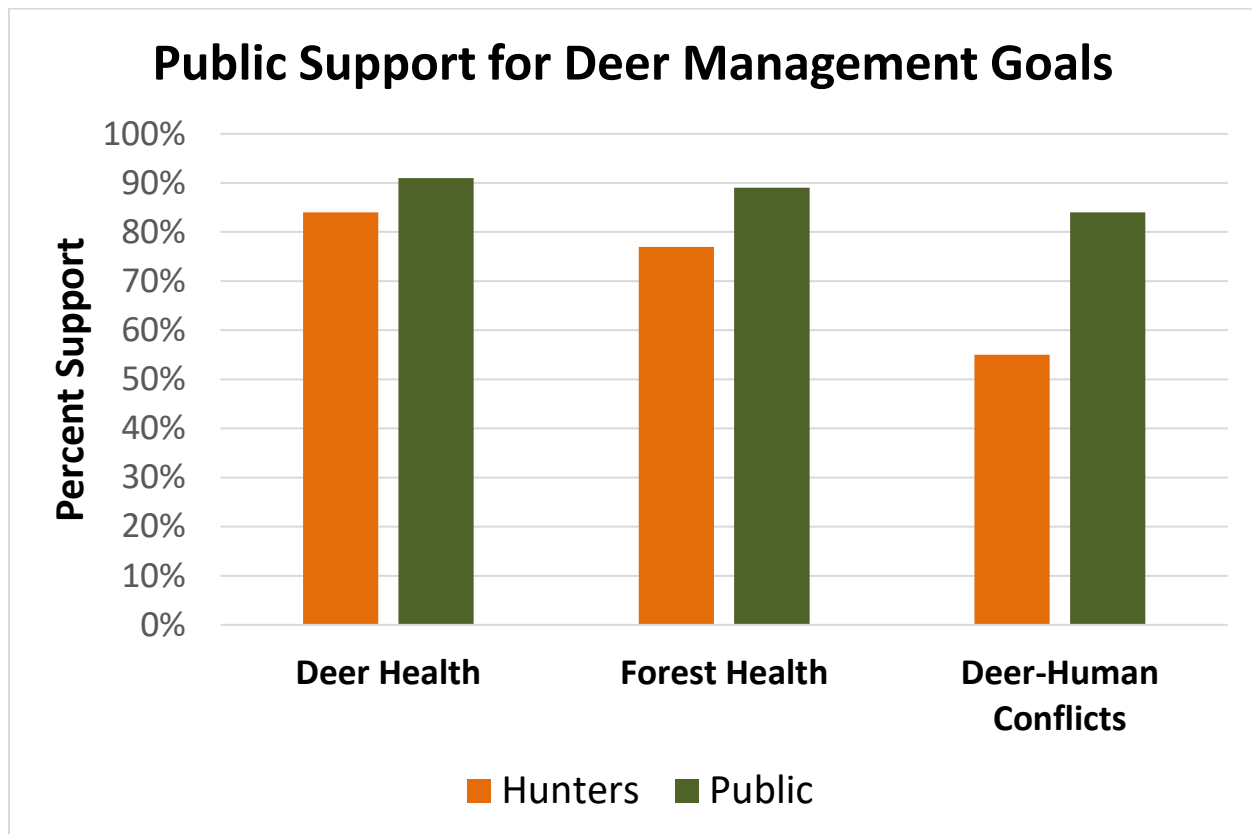


Figure 1. Percent of respondents that agree with deer management goals. The public values come from a citizen survey completed by Responsive Management in 2012 ([link](#)), and the hunter values come from the most recent deer hunter survey completed by the Deer and Elk Section and Bureau of Wildlife Management in 2023 ([link](#)). Results similar to previous deer hunter surveys in 2011 ([link](#)), 2014 ([link](#)), 2017([link](#)), and 2020 ([link](#)).

Step-by-Step Deer Management Recommendation Guide

The deer management program considers data for each goal to arrive at a deer population recommendation in a defined process (see pages 7 and 8). This process has been revised as new data are incorporated into the program and will continue to evolve as more data and understanding are gained. Decision points (i.e., fawn to doe ratio declining?) are based on published protocols from the wildlife and forestry professions.

Do PA residents want fewer or more deer?

This question is answered using results of the most-recent survey conducted by Responsive Management of Pennsylvania residents (2023). If most surveyed residents in a WMU want less deer, the recommendation would be to reduce the deer population. If the deer health goal is met, forest habitat is good, and WMU residents want more deer, the recommendation would be to increase the deer population.

(No new survey data for 2026, please see past reports for previous information)

Is CWD present?

This question is answered using results from the thousands of deer tested annually for chronic wasting disease (CWD). If CWD has been detected, then the CWD response plan is enacted, and management recommendations are to reduce the deer population within the WMU and near the detection. Increasing the antlerless harvest serves 2 purposes that are important to efforts to contain CWD; (1) increased antlerless harvest can reduce deer populations and spread of CWD, and (2) allows the Game Commission to test more deer in our efforts to obtain the best information on the extent of the disease.

Is fawn to doe ratio declining?

This question is answered using results from the age structure of the antlerless harvest. These data are collected each year by trained Game Commission deer agers from across the state. If the proportion of fawns in the antlerless harvest (hereafter referred to as fawn to doe ratio) is declining and the population is not achieving its objective (i.e., population is declining and objective is to maintain a stable deer population), then the antlerless allocation would be reduced to stop the population decline. The antlerless harvest will have the greatest influence on the population because hunting accounts for most deer mortalities in Pennsylvania. If the fawn to doe ratio is stable or if the population is meeting its objective (i.e., population is stable and objective is stable), no management action is taken.

Has deer population been stable or increasing for 6 years?

This question is answered using results from the Pennsylvania Sex-Age-Kill deer population model and deer harvest indices (i.e., antlered harvest, antlerless catch-per-unit-effort). The 6-year time period is necessary because of the 5-year time period to collect the forest data. The sixth year is added because only 2nd year seedlings are counted in the forest data. As a result, a complete forest data set includes effects of deer from the previous 6 years.

If the deer population is decreasing the recommendation is to stabilize the population at the lower level to see if forest habitat improves given the lower deer population. If the deer population is stable or increasing, the process continues to the next step.

Is forest habitat good?

This question is answered using results from the Pennsylvania Regeneration Study. If 70% of forested plots have adequate regeneration, forest habitat is considered good. If less than 50% of forested plots have adequate regeneration, forest habitat is considered poor. If 50% to 70% of forested plots have adequate regeneration, forest habitat is considered fair.

Is plot to plot regeneration improving?

This question is answered using results from the Pennsylvania Regeneration Study. In this step, results from individual plots are compared in a paired analysis. For example, plot measurements from 2015 are compared to their remeasured results in 2020 to see if regeneration has improved on individual plots. All plots with 2 measures are included in this analysis. If regeneration is improving, then the deer population trend can be stabilized. If regeneration is not improving, the process continues to the next step.

Is plot to plot deer impact improving?

This question is answered using results from the Pennsylvania Regeneration Study. In this step, results from assessments of deer impact on a scale from 1 (very low) to 5 (very high) are compared in the same way as the plot to plot regeneration analysis. If deer impact is improving (i.e., going from a 4 [high] to 3 [moderate]) on enough plots, then the deer population trend can be stabilized. If deer impact is not improving, the process continues to the next step.

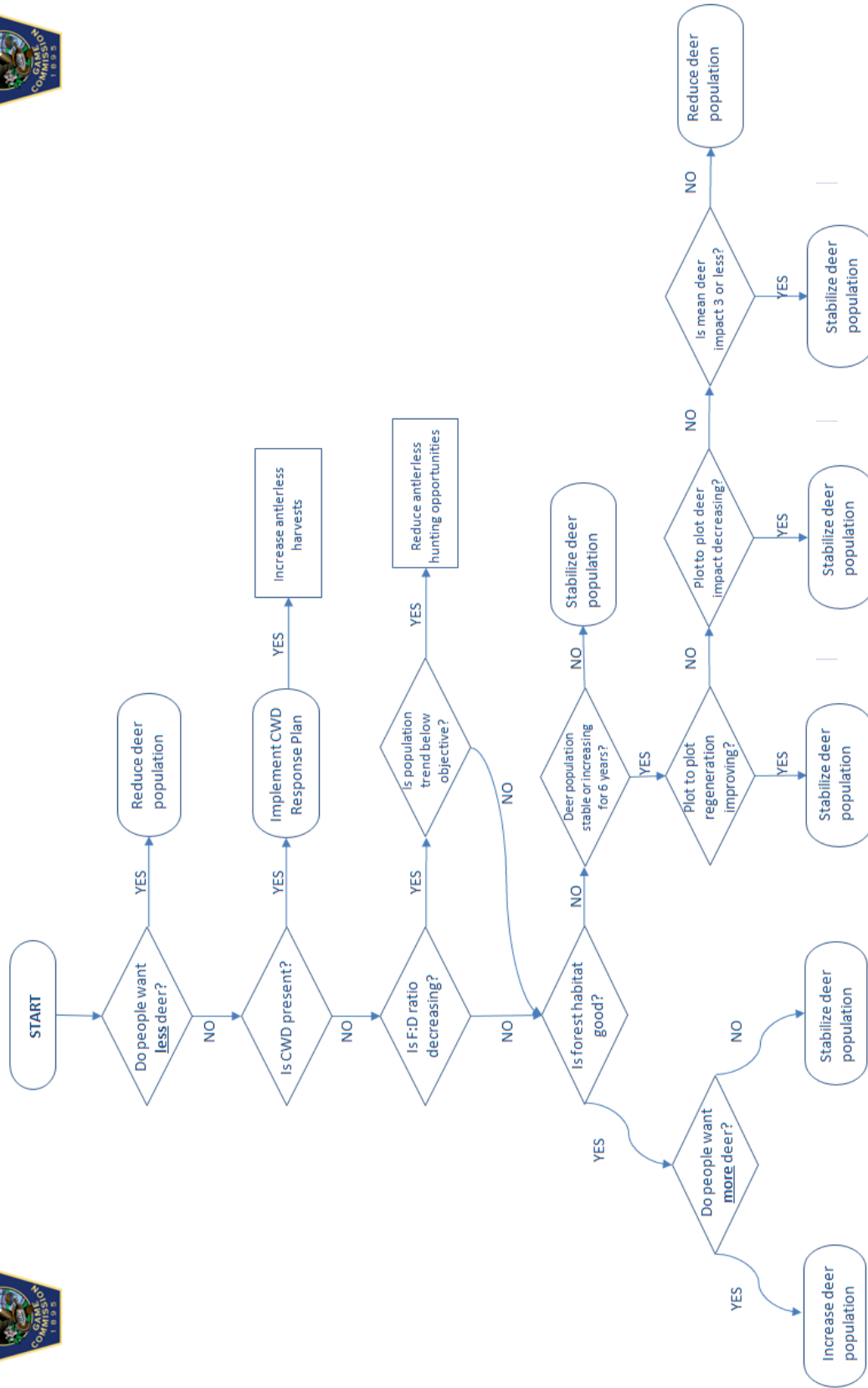
Is mean deer impact 3 or less?

This question is answered from the Pennsylvania Regeneration Study. In this step, the mean deer impact for all plots measured in the most recent 5-year period is statistically compared to an objective of 3 (i.e., moderate impact). If deer impact is significantly greater than 3 (moderate), then the deer impact is too high and the deer population should be reduced. If deer impact is less than or statistically not different from 3 (moderate) then the deer population trend will be stabilized.

(No new data used for the forest health measures. Please see past reports for previous information.)

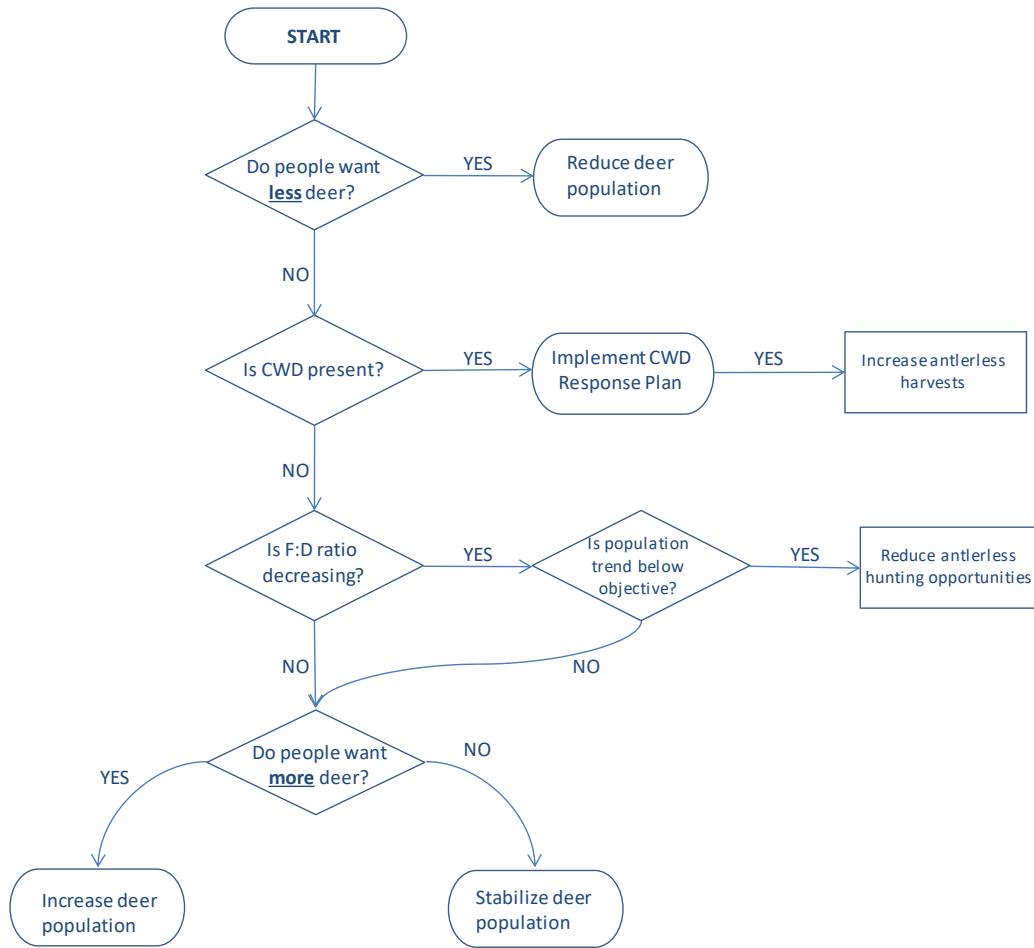
Guides on pages 7 and 8 are used to develop deer population recommendations based on goals and objectives of deer management plan. Recommendation guide for WMUs 2B, 5C, and 5D differs because of lack of forest data in these highly developed WMUs.

Deer Management Recommendation Process



Deer Management Recommendation Guide

FOR WMUs 2B, 5C, and 5D



Step-by-Step Antlerless License Allocation Calculations

Antlerless allocations are calculated by referring to results from previous seasons. For example, if a population has remained stable with an annual harvest of 10,000 antlerless deer, the same level of harvest would be expected to maintain the stable population. If it has taken 3 antlerless licenses to harvest 1 antlerless deer, the allocation to stabilize this population would be 10,000 antlerless deer harvested x 3 licenses/antlerless deer harvested = 30,000 antlerless licenses. If it takes 3.5 antlerless licenses to harvest 1 antlerless deer, then the allocation needed to harvest 10,000 antlerless deer would be 35,000 antlerless licenses.

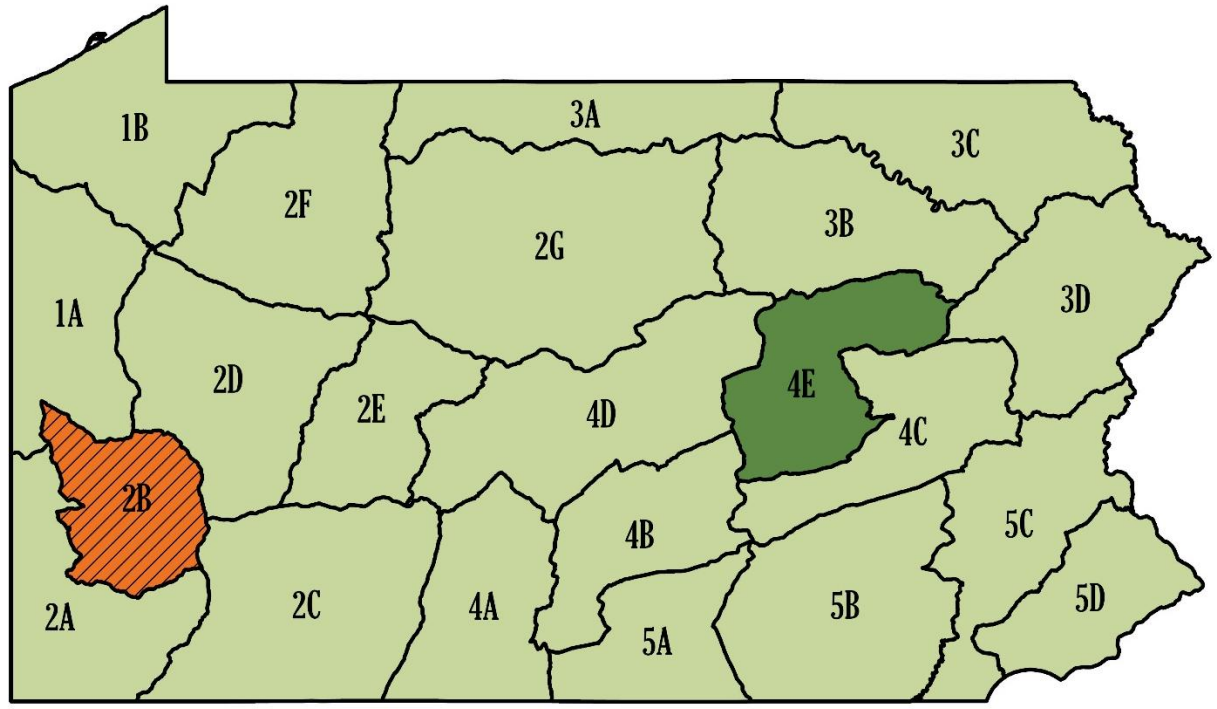
The 3-year average for antlerless licenses needed to harvest 1 antlerless deer was used for calculations (Table 1).

Table 1. Antlerless licenses needed to harvest 1 antlerless deer (license/deer) based on historic results for each WMU. Bold values used in calculations.




WMU	2023-24	2024-25	2025-26	3-year Average
1A	3.3	2.8	2.9	3.0
1B	2.7	2.6	2.5	2.6
2A	3.5	3.3	3.2	3.3
2B	3.4	3.7	4.0	3.7
2C	4.3	4.3	4.1	4.2
2D	4.0	3.5	3.5	3.7
2E	4.1	3.6	4.1	3.9
2F	3.5	3.1	3.3	3.3
2G	5.4	4.6	4.6	4.9
3A	3.5	3.2	3.1	3.3
3B	4.2	4.0	3.8	4.0
3C	3.8	3.3	3.9	3.6
3D	5.6	5.4	5.4	5.5
4A	6.5	6.2	6.5	6.4
4B	4.8	4.7	4.2	4.6
4C	4.8	4.4	3.7	4.3
4D	5.7	4.9	5.4	5.3
4E	3.9	3.8	3.5	3.8
5A	5.1	4.8	6.3	5.4
5B	4.2	3.9	4.3	4.1
5C	5.3	4.7	5.4	5.1
5D	4.3	3.7	5.5	4.5

6-year Population Trend with Fawn to Doe Ratio, 2020 to 2026

(Supporting data in WMU worksheets at end of report)



Legend

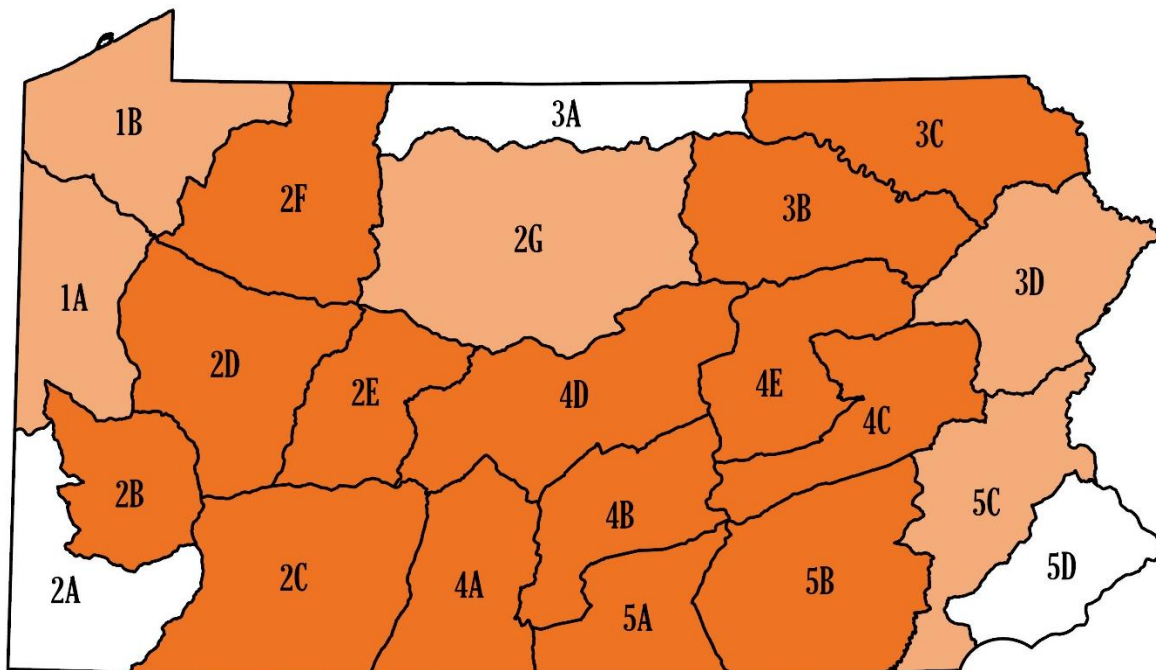
- Declining Deer Population 
 - Stable Deer Population 
 - Increasing Deer Population 
- * Diagonal lines designate a decreasing fawn to doe ratio trend*



Bureau of Wildlife Management, Deer and Elk Section
April 2026



Chronic Wasting Disease (CWD), as of April 2026



Legend

CWD Detected within WMU

CWD Detected within 10 miles of WMU

No CWD Positive Deer Detected



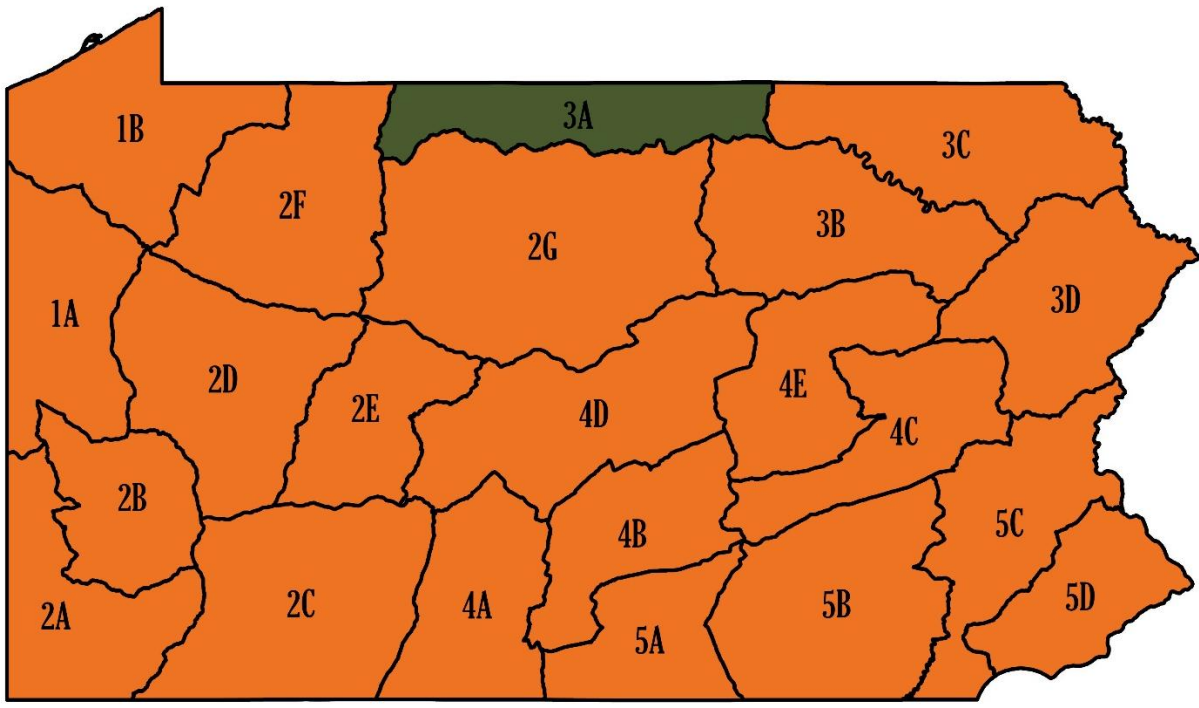
Note: No maps shown for forest health and deer-human conflict measures. No new data for the deer-human conflict measure and no new data used for the forest health measures. Please see past reports for previous information.



Bureau of Wildlife Management, Deer and Elk Section
April 2026



2026-27 Deer Management Objectives



Legend

- Reduce Deer Population
- Stabilize Deer Population



*Bureau of Wildlife Management, Deer and Elk Section
April 2026*



Recommendation Guides and Deer Population Datasheets

Recommendation guides (see pages 7 and 8) provide a step-by-step progression through the deer plan goals and measurable objectives to arrive at a deer population recommendation.

Supporting data for these guides are found in the individual WMU datasheets that follow.

WMU Antlerless Allocation Worksheets

Example

WMU → **2024-25 Pennsylvania Game Commission Antlerless Allocation Worksheet**

WMU 1A

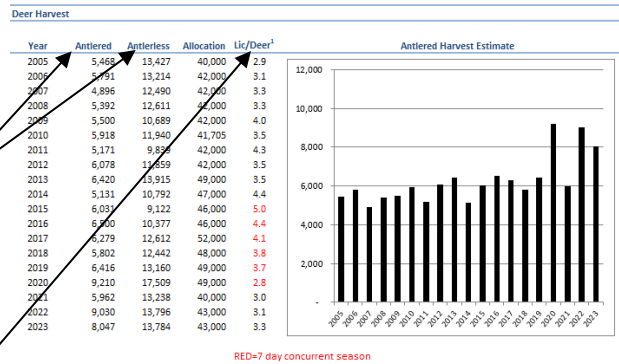
← **WMU Characteristics**

WMU Characteristics				
% Developed	% Forest	%Ag/Field	%Public	Area (sq mi)
9%	45%	36%	3%	1,846

Antlered and antlerless harvests point estimates will differ from those in news releases. Estimates in news releases are rounded to the nearest 100 or 1,000 based on precision of the estimate.

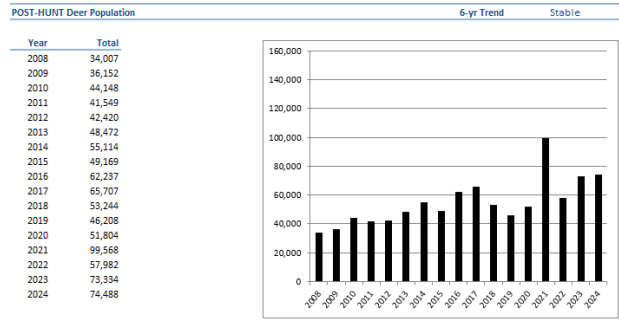
Antlerless harvests only include deer taken with WMU licenses.

The number of antlerless licenses sold that it takes to harvest an antlerless deer. The number sold will slightly differ from the allocation. **Red Lic/Deer indicates 7-day concurrent seasons.**



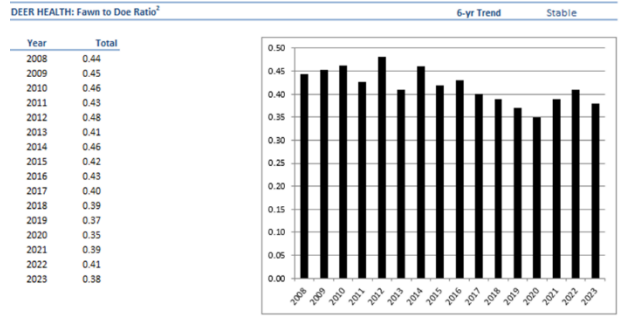
WMU Characteristics

← **Antlered Harvest**



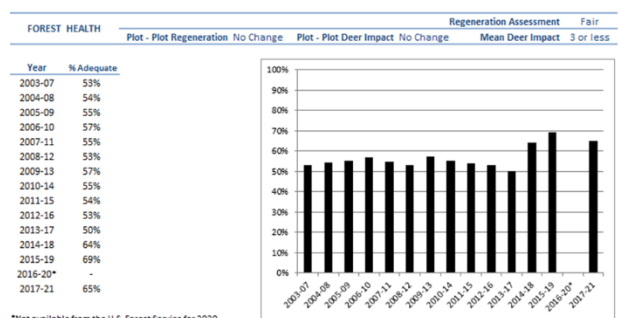
← **Population Trend**

For information on the proper use and interpretation of deer population estimates, please see the document, "[Monitoring deer populations in Pennsylvania](#)" on the white-tailed deer page of the Game Commission's website.

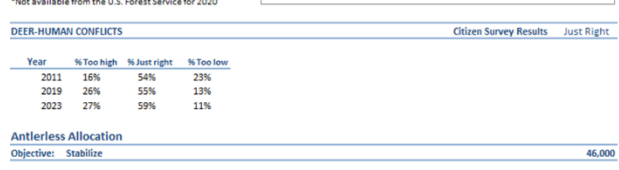


← **Fawn to Doe**

Harvest fawn to doe ratio is calculated as percent of fawns in the antlerless harvest.



← **Regeneration**



*Not available from the U.S. Forest Service for 2020

2026-27 Pennsylvania Game Commission Antlerless Allocation Worksheet

WMU 1A

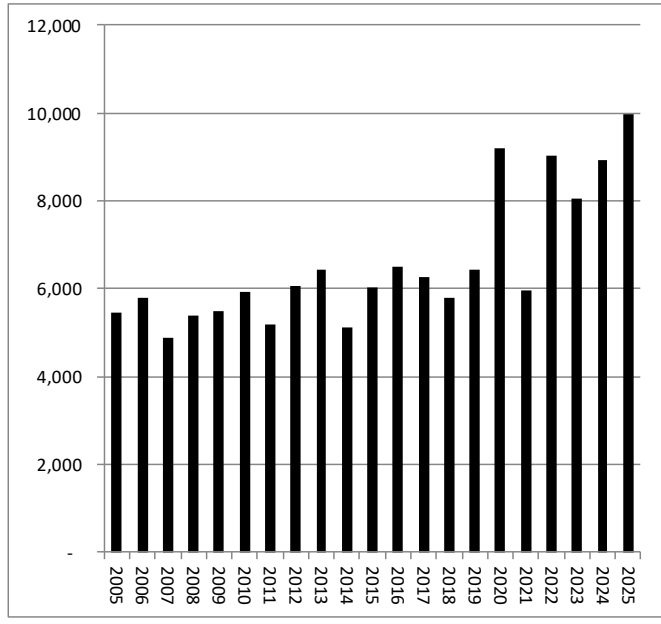
WMU Characteristics

% Developed	% Forest	%Ag/Field	%Public	Area (sq mi)
9%	45%	36%	3%	1,846

Deer Harvest

Year	Antlered	Antlerless	Allocation	Lic/Deer ¹
2005	5,468	13,427	40,000	2.9
2006	5,791	13,214	42,000	3.1
2007	4,896	12,490	42,000	3.3
2008	5,392	12,611	42,000	3.3
2009	5,500	10,689	42,000	4.0
2010	5,918	11,940	41,705	3.5
2011	5,171	9,839	42,000	4.3
2012	6,078	11,859	42,000	3.5
2013	6,420	13,915	49,000	3.5
2014	5,131	10,792	47,000	4.4
2015	6,031	9,122	46,000	5.0
2016	6,500	10,377	46,000	4.4
2017	6,279	12,612	52,000	4.1
2018	5,802	12,442	48,000	3.8
2019	6,416	13,160	49,000	3.7
2020	9,210	17,509	49,000	2.8
2021	5,962	13,238	40,000	3.0
2022	9,030	13,796	43,000	3.1
2023	8,047	13,784	46,000	3.3
2024	8,942	16,605	46,000	2.8
2025	9,969	15,790	46,000	2.9

Antlered Harvest Estimate



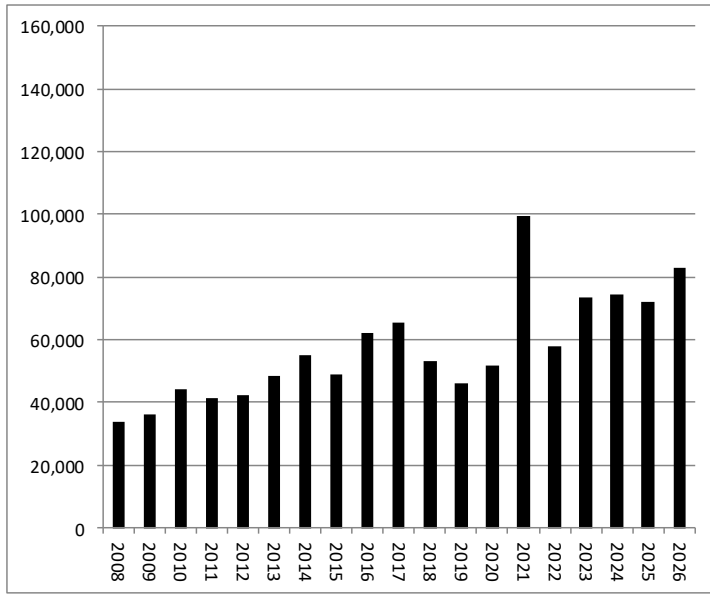
RED=7 day concurrent season

POST-HUNT Deer Population

6-yr Trend

Stable

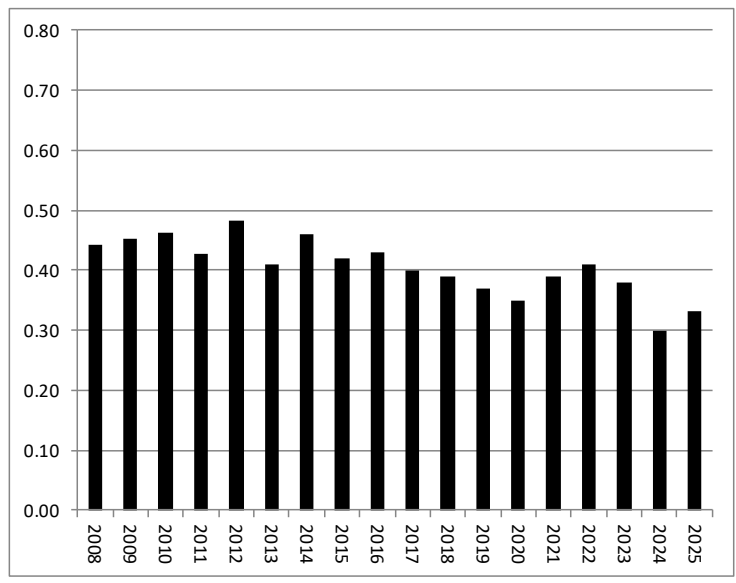
Year	Total
2008	34,007
2009	36,152
2010	44,148
2011	41,549
2012	42,420
2013	48,472
2014	55,114
2015	49,169
2016	62,237
2017	65,707
2018	53,244
2019	46,208
2020	51,804
2021	99,568
2022	57,982
2023	73,334
2024	74,488
2025	71,915
2026	82,778



WMU 1A

DEER HEALTH: Fawn to Doe Ratio² 6-yr Trend Stable

Year	Total
2008	0.44
2009	0.45
2010	0.46
2011	0.43
2012	0.48
2013	0.41
2014	0.46
2015	0.42
2016	0.43
2017	0.40
2018	0.39
2019	0.37
2020	0.35
2021	0.39
2022	0.41
2023	0.38
2024	0.30
2025	0.33



FOREST HEALTH NA

No new data used for the forest health measures. Please see past reports for previous information.

DEER-HUMAN CONFLICTS Citizen Survey Results Just Right

Year	% Too high	% Just right	% Too low
2011	16%	54%	23%
2019	26%	55%	13%
2023	27%	59%	11%

Antlerless Allocation

Objective: Reduce (CWD detected within 10 miles of WMU) 52,000

¹ - The number of antlerless licenses sold that it takes to harvest an antlerless deer. The number sold will differ from the allocation.
² - Harvest fawn to doe ratio is calculated as percent of fawns in the antlerless harvest.

2026-27 Pennsylvania Game Commission Antlerless Allocation Worksheet

WMU 1B

WMU Characteristics				
% Developed	% Forest	%Ag/Field	%Public	Area (sq mi)
7%	54%	32%	4%	2,115

Deer Harvest

Year	Antlered	Antlerless	Allocation	Lic/Deer ¹	Antlered Harvest Estimate
2005	6,382	10,707	27,000	2.5	
2006	6,773	11,974	30,000	2.5	
2007	6,010	11,400	30,000	2.6	
2008	7,507	13,390	30,000	2.2	
2009	5,089	9,474	30,000	3.2	
2010	5,470	9,233	27,844	3.0	
2011	6,021	9,508	30,000	3.2	
2012	6,978	11,086	33,000	3.0	
2013	6,835	10,760	31,000	2.9	
2014	5,766	8,788	30,000	3.4	
2015	6,895	7,671	29,000	3.8	
2016	7,948	8,243	29,000	3.5	
2017	8,300	13,047	35,000	2.7	
2018	7,971	15,765	37,000	2.4	
2019	8,658	12,738	35,000	2.8	
2020	11,671	17,758	41,000	2.3	
2021	9,274	12,596	32,000	2.6	
2022	9,121	15,306	34,000	2.2	
2023	10,267	13,597	37,000	2.7	
2024	9,169	14,051	37,000	2.6	
2025	11,070	17,627	44,000	2.5	

RED=7 day concurrent season

POST-HUNT Deer Population

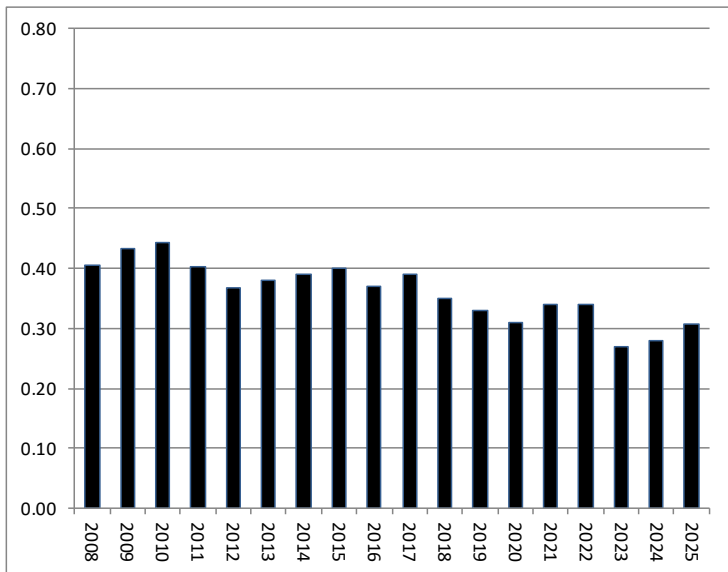
6-yr Trend Stable

Year	Total	6-yr Trend
2008	52,810	
2009	58,926	
2010	44,469	
2011	46,503	
2012	51,697	
2013	55,713	
2014	53,799	
2015	47,438	
2016	71,669	
2017	74,053	
2018	81,376	
2019	60,756	
2020	81,659	
2021	95,277	
2022	74,887	
2023	72,506	
2024	81,997	
2025	77,008	
2026	91,003	

WMU 1B

DEER HEALTH: Fawn to Doe Ratio² 6-yr Trend Stable

Year	Total
2008	0.41
2009	0.43
2010	0.44
2011	0.40
2012	0.37
2013	0.38
2014	0.39
2015	0.40
2016	0.37
2017	0.39
2018	0.35
2019	0.33
2020	0.31
2021	0.34
2022	0.34
2023	0.27
2024	0.28
2025	0.31



FOREST HEALTH NA

No new data used for the forest health measures. Please see past reports for previous information.

DEER-HUMAN CONFLICTS Citizen Survey Results Just Right

Year	% Too high	% Just right	% Too low
2011	11%	56%	26%
2019	24%	47%	23%
2023	34%	53%	7%

Antlerless Allocation

Objective: Reduce (CWD detected within 10 miles of WMU) 44,000

¹ - The number of antlerless licenses sold that it takes to harvest an antlerless deer. The number sold will differ from the allocation.
² - Harvest fawn to doe ratio is calculated as percent of fawns in the antlerless harvest.

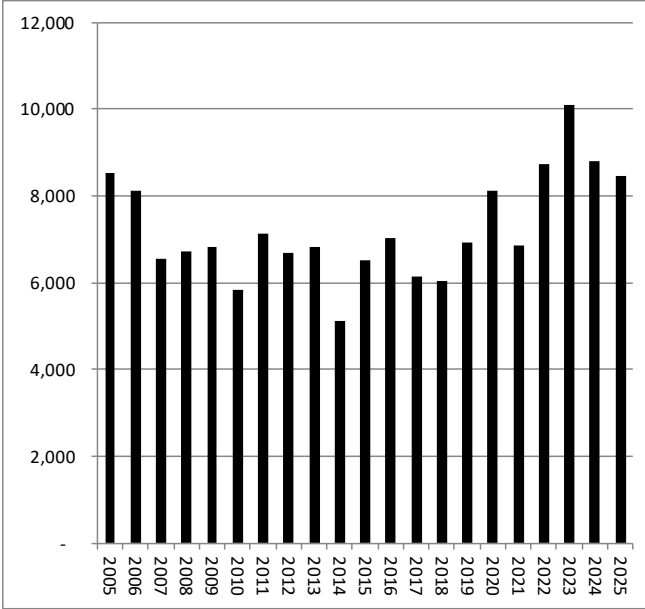
2026-27 Pennsylvania Game Commission Antlerless Allocation Worksheet

WMU 2A

WMU Characteristics

% Developed	% Forest	%Ag/Field	%Public	Area (sq mi)
7%	61%	29%	3%	1,811

Deer Harvest

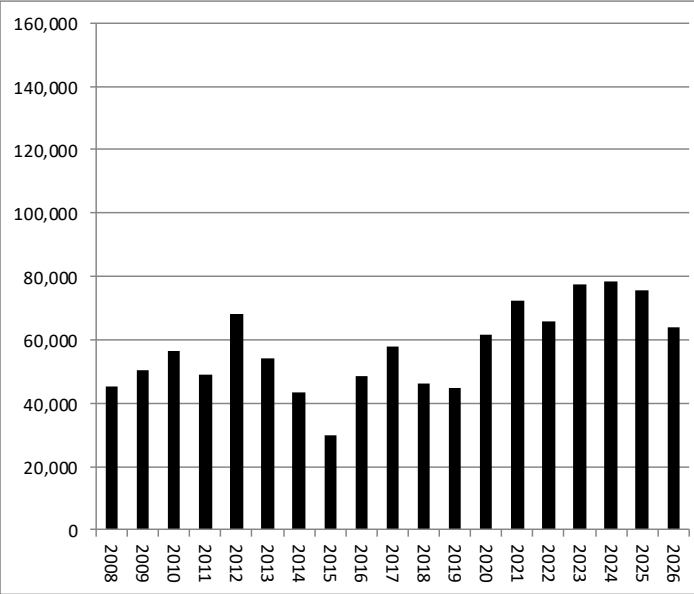
Year	Antlered	Antlerless	Allocation	Lic/Deer ¹	Antlered Harvest Estimate
2005	8,510	19,649	55,000	2.7	
2006	8,104	16,987	55,000	3.2	
2007	6,560	14,322	60,000	3.9	
2008	6,714	15,255	55,000	3.5	
2009	6,829	13,920	55,000	4.0	
2010	5,830	13,463	54,879	4.1	
2011	7,142	12,677	65,000	4.4	
2012	6,683	12,694	59,000	4.5	
2013	6,836	13,241	49,000	3.7	
2014	5,131	9,580	46,000	4.8	
2015	6,511	10,507	43,000	4.1	
2016	7,027	9,235	43,000	4.6	
2017	6,134	10,866	50,000	4.6	
2018	6,036	10,950	49,000	4.2	
2019	6,929	9,918	46,000	4.4	
2020	8,128	11,835	46,000	3.9	
2021	6,846	10,590	39,000	3.7	
2022	8,714	11,009	39,000	3.5	
2023	10,078	13,265	46,000	3.5	
2024	8,795	13,825	46,000	3.3	
2025	8,446	13,614	44,000	3.2	

RED=7 day concurrent season

POST-HUNT Deer Population

6-yr Trend

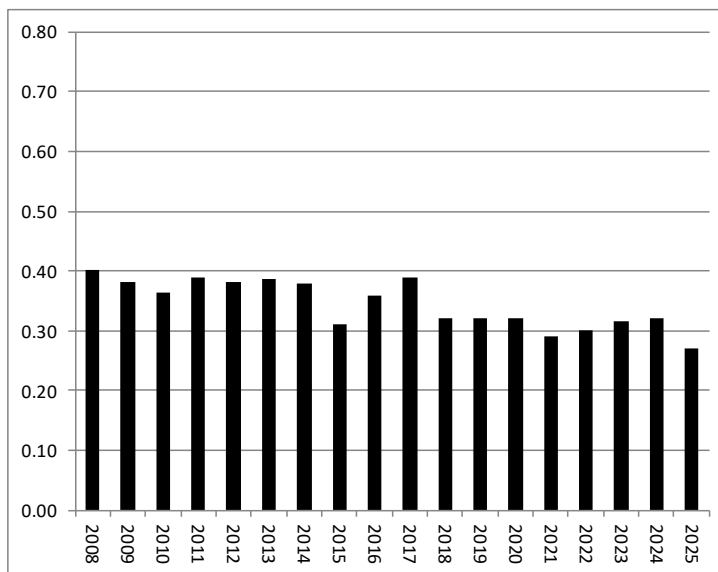
Stable

Year	Total	POST-HUNT Deer Population
2008	45,462	
2009	50,336	
2010	56,286	
2011	49,033	
2012	68,080	
2013	53,996	
2014	43,379	
2015	30,033	
2016	48,723	
2017	57,963	
2018	46,361	
2019	44,587	
2020	61,486	
2021	72,156	
2022	65,676	
2023	77,599	
2024	78,566	
2025	75,685	
2026	63,981	

WMU 2A

DEER HEALTH: Fawn to Doe Ratio² 6-yr Trend Stable

Year	Total
2008	0.40
2009	0.38
2010	0.36
2011	0.39
2012	0.38
2013	0.39
2014	0.38
2015	0.31
2016	0.36
2017	0.39
2018	0.32
2019	0.32
2020	0.32
2021	0.29
2022	0.30
2023	0.32
2024	0.32
2025	0.27



FOREST HEALTH NA

No new data used for the forest health measures. Please see past reports for previous information.

DEER-HUMAN CONFLICTS Citizen Survey Results Just Right

Year	% Too high	% Just right	% Too low
2011	25%	56%	13%
2019	28%	50%	19%
2023	34%	51%	9%

Antlerless Allocation

Objective: Reduce (Executive Office) 49,000

¹ - The number of antlerless licenses sold that it takes to harvest an antlerless deer. The number sold will differ from the allocation.

² - Harvest fawn to doe ratio is calculated as percent of fawns in the antlerless harvest.

2026-27 Pennsylvania Game Commission Antlerless Allocation Worksheet

WMU 2B

WMU Characteristics

% Developed	% Forest	%Ag/Field	%Public	Area (sq mi)
30%	44%	21%	0%	1,363

Deer Harvest

Year	Antlered	Antlerless	Allocation	Lic/Deer ¹	Antlered Harvest Estimate
2005	5,182	14,459	68,000	4.4	
2006	5,759	16,505	68,000	3.9	
2007	4,372	15,332	68,000	3.9	
2008	3,964	15,251	68,000	4.1	
2009	4,297	19,866	68,000	3.3	
2010	3,976	13,008	68,000	4.8	
2011	4,472	16,550	71,000	3.6	
2012	4,837	15,955	67,000	3.8	
2013	5,610	14,389	62,000	4.3	
2014	4,267	13,165	60,000	4.5	
2015	5,191	15,379	61,000	3.9	
2016	5,801	14,317	60,000	4.2	
2017	4,458	13,930	60,000	3.9	
2018	5,036	12,318	58,000	3.8	
2019	5,503	10,374	54,000	4.3	
2020	6,201	14,746	49,000	3.3	
2021	5,189	12,095	49,000	4.0	
2022	6,595	15,254	49,000	3.1	
2023	6,838	15,565	53,000	3.3	
2024	7,639	14,285	53,000	3.7	
2025	9,097	14,639	59,000	4.0	

POST-HUNT Deer Population

6-yr Trend

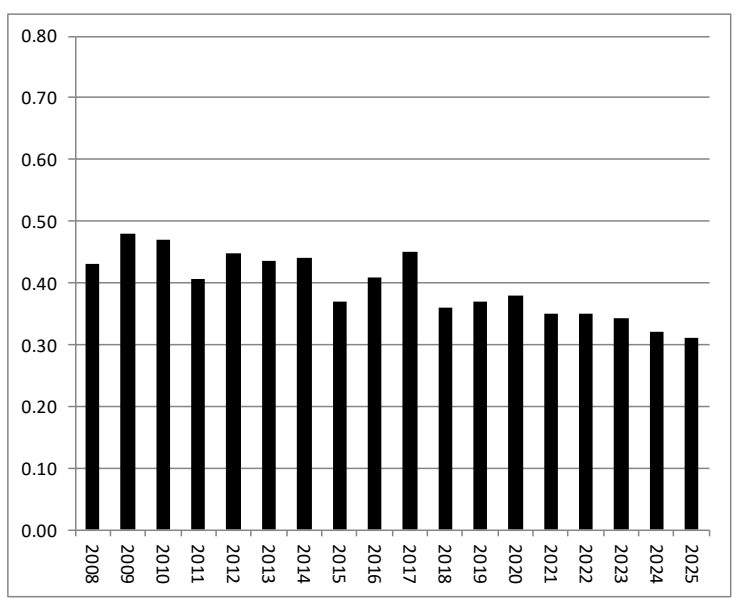
Increasing

Harvest indices (i.e., antlered harvest, antlerless lic/deer), not PASAK model, used to monitor population trend

WMU 2B

DEER HEALTH: Fawn to Doe Ratio² **6-yr Trend** Decreasing

Year	Total
2008	0.43
2009	0.48
2010	0.47
2011	0.41
2012	0.45
2013	0.44
2014	0.44
2015	0.37
2016	0.41
2017	0.45
2018	0.36
2019	0.37
2020	0.38
2021	0.35
2022	0.35
2023	0.34
2024	0.32
2025	0.31



FOREST HEALTH NA

Forest data not considered in this developed WMU

DEER-HUMAN CONFLICTS **Citizen Survey Results** Just Right

Year	% Too high	% Just right	% Too low
2011	32%	52%	9%
2019	38%	51%	8%
2023	42%	49%	5%

Antlerless Allocation

Objective: Reduce (CWD detected within WMU) 62,000

¹ - The number of antlerless licenses sold that it takes to harvest an antlerless deer. The number sold will differ from the allocation.
² - Harvest fawn to doe ratio is calculated as percent of fawns in the antlerless harvest.

2026-27 Pennsylvania Game Commission Antlerless Allocation Worksheet

WMU 2C

WMU Characteristics

% Developed	% Forest	%Ag/Field	%Public	Area (sq mi)
6%	68%	24%	10%	2,934

Deer Harvest

Year	Antlered	Antlerless	Allocation	Lic/Deer ¹	Antlered Harvest Estimate
2005	7,413	13,683	53,000	3.8	
2006	9,049	12,094	49,000	4.0	
2007	8,441	11,619	49,000	4.1	
2008	7,476	12,752	49,000	3.8	
2009	6,508	10,870	49,000	4.5	
2010	8,528	9,579	44,107	4.6	
2011	8,249	12,793	58,000	4.5	
2012	7,600	10,822	50,000	4.6	
2013	7,219	10,957	43,000	3.9	
2014	7,016	8,985	38,000	4.5	
2015	9,134	7,269	31,000	4.3	
2016	8,300	6,869	31,000	4.6	
2017	9,792	7,724	31,000	4.0	
2018	9,572	11,134	44,000	4.0	
2019	9,426	12,743	52,000	4.1	
2020	8,441	15,744	58,000	3.7	
2021	9,330	15,415	67,000	4.3	
2022	10,035	16,563	67,000	4.0	
2023	10,629	20,607	88,000	4.3	
2024	10,421	21,704	93,000	4.3	
2025	11,407	22,899	93,000	4.1	

RED=7 day concurrent season

POST-HUNT Deer Population

6-yr Trend

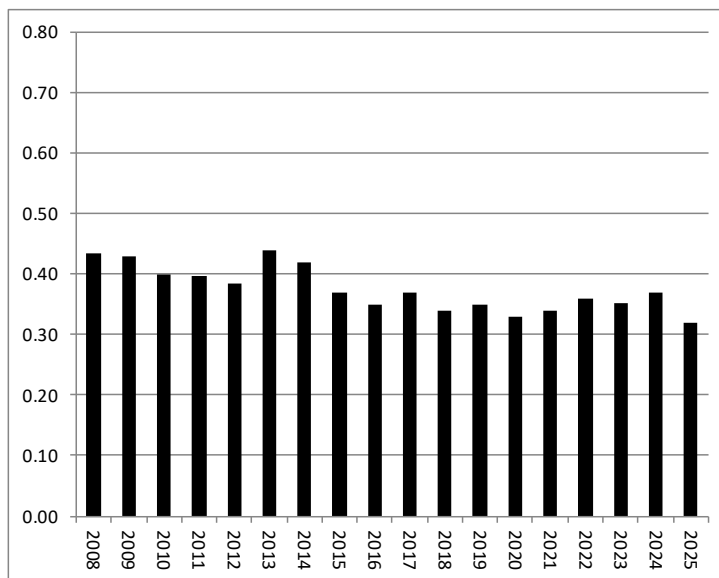
Stable

Year	Total
2008	87,046
2009	72,402
2010	62,340
2011	66,729
2012	64,888
2013	61,386
2014	68,683
2015	66,027
2016	83,350
2017	69,034
2018	113,659
2019	86,087
2020	97,246
2021	76,365
2022	73,906
2023	86,600
2024	89,808
2025	96,480
2026	79,107

WMU 2C

DEER HEALTH: Fawn to Doe Ratio² 6-yr Trend Stable

Year	Total
2008	0.43
2009	0.43
2010	0.40
2011	0.40
2012	0.38
2013	0.44
2014	0.42
2015	0.37
2016	0.35
2017	0.37
2018	0.34
2019	0.35
2020	0.33
2021	0.34
2022	0.36
2023	0.35
2024	0.37
2025	0.32



FOREST HEALTH NA

No new data used for the forest health measures. Please see past reports for previous information.

DEER-HUMAN CONFLICTS Citizen Survey Results Just Right

Year	% Too high	% Just right	% Too low
2011	13%	50%	26%
2019	19%	52%	23%
2023	30%	45%	16%

Antlerless Allocation

Objective: Reduce (CWD detected within WMU) 117,000

¹ - The number of antlerless licenses sold that it takes to harvest an antlerless deer. The number sold will differ from the allocation.

² - Harvest fawn to doe ratio is calculated as percent of fawns in the antlerless harvest.

2026-27 Pennsylvania Game Commission Antlerless Allocation Worksheet

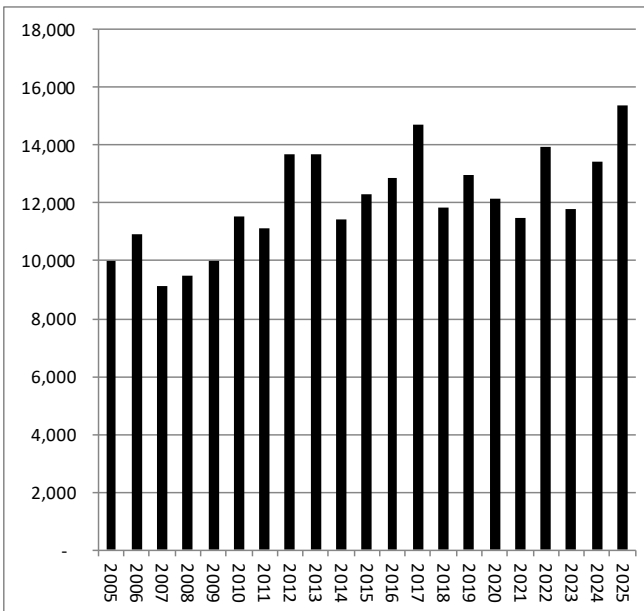
WMU 2D

WMU Characteristics

% Developed	% Forest	%Ag/Field	%Public	Area (sq mi)
5%	60%	31%	2%	2,486

Deer Harvest

Year	Antlered	Antlerless	Allocation	Lic/Deer ¹	Antlered Harvest Estimate
2005	9,975	22,054	56,000	2.5	
2006	10,896	20,437	56,000	2.7	
2007	9,118	18,099	56,000	3.1	
2008	9,508	15,591	56,000	3.5	
2009	9,977	15,962	56,000	3.5	
2010	11,540	18,046	50,123	2.8	
2011	11,130	19,257	60,000	3.1	
2012	13,660	20,839	62,000	3.0	
2013	13,704	21,614	61,000	2.8	
2014	11,417	16,441	61,000	3.7	
2015	12,292	15,728	55,000	3.5	
2016	12,843	16,447	55,000	3.3	
2017	14,716	17,033	55,000	3.2	
2018	11,847	20,345	63,000	3.1	
2019	12,971	17,472	66,000	3.8	
2020	12,121	18,726	60,000	3.2	
2021	11,486	19,908	74,000	3.7	
2022	13,912	23,029	74,000	3.2	
2023	11,769	21,421	86,000	4.0	
2024	13,434	28,841	102,000	3.5	
2025	15,371	27,314	96,000	3.5	



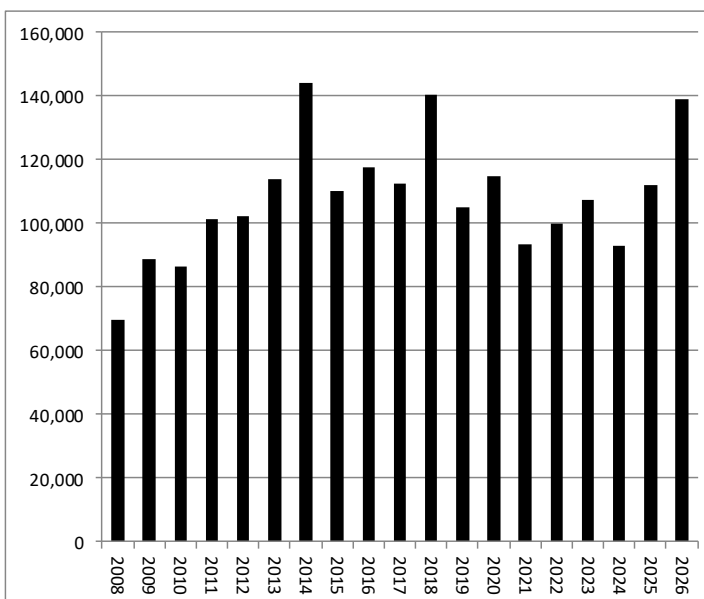
RED=7 day concurrent season

POST-HUNT Deer Population

6-yr Trend

Stable

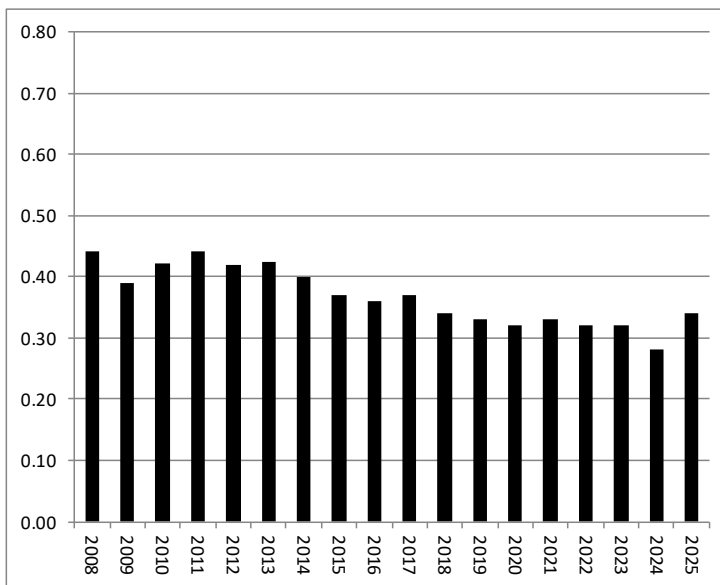
Year	Total
2008	69,732
2009	88,666
2010	86,493
2011	101,182
2012	102,440
2013	113,774
2014	144,084
2015	110,214
2016	117,823
2017	112,499
2018	140,281
2019	105,280
2020	114,679
2021	93,498
2022	99,753
2023	107,353
2024	92,979
2025	111,951
2026	138,957



WMU 2D

DEER HEALTH: Fawn to Doe Ratio² 6-yr Trend Stable

Year	Total
2008	0.44
2009	0.39
2010	0.42
2011	0.44
2012	0.42
2013	0.42
2014	0.40
2015	0.37
2016	0.36
2017	0.37
2018	0.34
2019	0.33
2020	0.32
2021	0.33
2022	0.32
2023	0.32
2024	0.28
2025	0.34



FOREST HEALTH NA

No new data used for the forest health measures. Please see past reports for previous information.

DEER-HUMAN CONFLICTS Citizen Survey Results Just Right

Year	% Too high	% Just right	% Too low
2011	23%	52%	19%
2019	26%	57%	13%
2023	30%	51%	16%

Antlerless Allocation

Objective: Reduce (CWD detected within WMU) 112,000

¹ - The number of antlerless licenses sold that it takes to harvest an antlerless deer. The number sold will differ from the allocation.

² - Harvest fawn to doe ratio is calculated as percent of fawns in the antlerless harvest.

2026-27 Pennsylvania Game Commission Antlerless Allocation Worksheet

WMU 2E

WMU Characteristics

% Developed	% Forest	%Ag/Field	%Public	Area (sq mi)
5%	65%	26%	6%	1,427

Deer Harvest

Year	Antlered	Antlerless	Allocation	Lic/Deer ¹	Antlered Harvest Estimate
2005	4,093	7,471	21,000	2.8	
2006	5,358	7,360	21,000	2.8	
2007	3,642	6,398	21,000	3.2	
2008	4,984	6,179	21,000	3.3	
2009	3,673	5,298	21,000	4.0	
2010	4,178	5,952	20,407	3.5	
2011	4,116	7,073	25,000	3.5	
2012	4,785	5,561	21,000	3.8	
2013	4,883	7,973	22,000	2.8	
2014	4,440	5,593	21,000	3.8	
2015	4,742	5,263	21,000	4.0	
2016	5,221	5,215	21,000	4.1	
2017	6,929	6,214	22,000	3.5	
2018	6,274	8,693	27,000	3.1	
2019	6,370	7,641	32,000	4.2	
2020	6,515	11,348	39,000	3.4	
2021	5,917	9,488	42,000	4.4	
2022	6,713	10,635	42,000	3.9	
2023	6,874	12,830	52,000	4.1	
2024	6,829	14,924	54,000	3.6	
2025	7,709	12,476	51,000	4.1	

RED=7 day concurrent season

POST-HUNT Deer Population

6-yr Trend

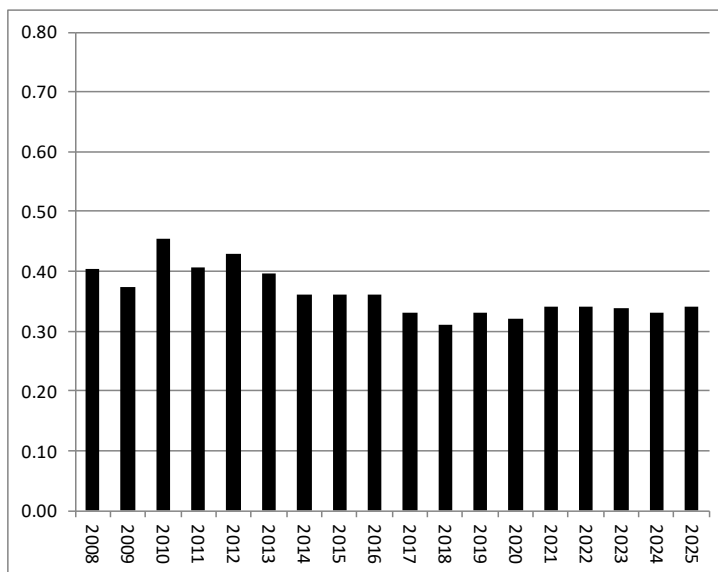
Stable

Year	Total	POST-HUNT Deer Population
2008	32,623	
2009	42,709	
2010	38,317	
2011	38,134	
2012	30,384	
2013	44,546	
2014	45,529	
2015	50,549	
2016	43,081	
2017	43,144	
2018	56,635	
2019	47,171	
2020	62,753	
2021	52,578	
2022	54,143	
2023	56,405	
2024	55,564	
2025	55,422	
2026	67,709	

WMU 2E

DEER HEALTH: Fawn to Doe Ratio² 6-yr Trend Stable

Year	Total
2008	0.40
2009	0.37
2010	0.46
2011	0.41
2012	0.43
2013	0.40
2014	0.36
2015	0.36
2016	0.36
2017	0.33
2018	0.31
2019	0.33
2020	0.32
2021	0.34
2022	0.34
2023	0.34
2024	0.33
2025	0.34



FOREST HEALTH NA

No new data used for the forest health measures. Please see past reports for previous information.

DEER-HUMAN CONFLICTS Citizen Survey Results Just Right

Year	% Too high	% Just right	% Too low
2011	13%	48%	31%
2019	20%	56%	22%
2023	27%	46%	21%

Antlerless Allocation

Objective: Reduce (CWD detected within WMU) 63,000

¹ - The number of antlerless licenses sold that it takes to harvest an antlerless deer. The number sold will differ from the allocation.

² - Harvest fawn to doe ratio is calculated as percent of fawns in the antlerless harvest.

2026-27 Pennsylvania Game Commission Antlerless Allocation Worksheet

WMU 2F

WMU Characteristics

% Developed	% Forest	%Ag/Field	%Public	Area (sq mi)
2%	88%	7%	56%	2,409

Deer Harvest

Year	Antlered	Antlerless	Allocation	Lic/Deer ¹	Antlered Harvest Estimate
2005	6,013	8,322	30,000	3.5	
2006	7,153	8,030	28,000	3.5	
2007	4,795	7,132	28,000	3.9	
2008	6,990	9,117	28,000	3.0	
2009	5,167	6,648	28,000	4.3	
2010	6,403	5,657	22,148	4.0	
2011	5,393	6,737	34,000	5.0	
2012	7,139	6,067	27,000	4.5	
2013	6,607	8,008	29,000	3.6	
2014	5,979	5,915	27,000	4.6	
2015	6,989	5,434	22,000	4.1	
2016	7,678	6,718	22,000	3.3	
2017	9,489	7,200	24,000	3.3	
2018	7,665	7,533	23,000	3.1	
2019	9,014	8,816	31,000	3.5	
2020	10,686	9,953	36,000	3.6	
2021	8,897	10,241	32,000	3.2	
2022	8,802	11,784	37,000	3.2	
2023	9,106	13,883	49,000	3.5	
2024	11,121	17,697	55,000	3.1	
2025	10,785	15,651	51,000	3.3	

RED=7 day concurrent season

POST-HUNT Deer Population

6-yr Trend

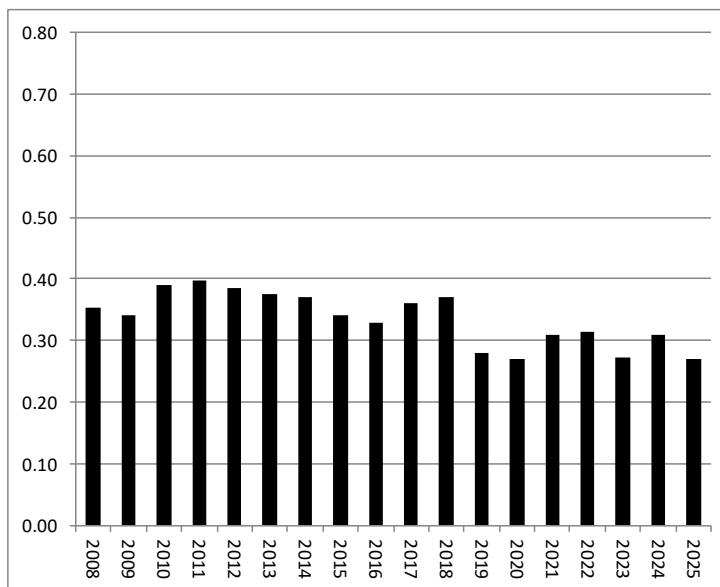
Stable

Year	Total	6-yr Trend
2008	47,288	
2009	67,724	
2010	46,887	
2011	70,765	
2012	53,210	
2013	83,063	
2014	65,614	
2015	61,020	
2016	67,152	
2017	74,387	
2018	108,575	
2019	87,309	
2020	98,104	
2021	112,840	
2022	86,470	
2023	83,968	
2024	82,787	
2025	117,935	
2026	93,804	

WMU 2F

DEER HEALTH: Fawn to Doe Ratio² 6-yr Trend Stable

Year	Total
2008	0.35
2009	0.34
2010	0.39
2011	0.40
2012	0.39
2013	0.38
2014	0.37
2015	0.34
2016	0.33
2017	0.36
2018	0.37
2019	0.28
2020	0.27
2021	0.31
2022	0.31
2023	0.27
2024	0.31
2025	0.27



FOREST HEALTH NA

No new data used for the forest health measures. Please see past reports for previous information.

DEER-HUMAN CONFLICTS Citizen Survey Results Just Right

Year	% Too high	% Just right	% Too low
2011	10%	39%	42%
2019	19%	48%	26%
2023	28%	53%	15%

Antlerless Allocation

Objective: Reduce (CWD detected within WMU) 67,000

¹ - The number of antlerless licenses sold that it takes to harvest an antlerless deer. The number sold will differ from the allocation.

² - Harvest fawn to doe ratio is calculated as percent of fawns in the antlerless harvest.

2026-27 Pennsylvania Game Commission Antlerless Allocation Worksheet

WMU 2G *Note, 2H has been dissolved back into 2G

WMU Characteristics

% Developed	% Forest	%Ag/Field	%Public	Area (sq mi)*
4%	82%	7%	57%	4,118

Deer Harvest

Year	Antlered	Antlerless	Allocation	Lic/Deer ¹	Antlered Harvest Estimate
2005	6,473	8,359	29,000	3.0	
2006	8,594	6,207	19,000	3.9	
2007	7,052	6,613	26,000	4.0	
2008	6,764	6,460	26,000	6.2	
2009	5,216	4,246	26,000	3.7	
2010	8,702	4,227	15,210	4.0	
2011	7,770	5,835	23,000	5.1	
2012	6,564	6,466	33,000	4.0	
2013	6,527	8,582	34,000	4.8	
2014	6,425	5,800	27,500	5.1	
2015	7,573	5,598	28,500	4.8	
2016	8,163	5,631	27,000	4.4	
2017	10,106	7,352	32,500	3.9	
2018	8,634	9,241	36,000	4.4	
2019	10,548	7,364	32,000	4.1	
2020	10,266	8,425	34,000	4.9	
2021	8,664	6,807	32,000	4.6	
2022	8,596	6,881	31,000	5.1	
2023	8,084	6,485	35,000	5.4	
2024	9,281	8,180	37,000	4.6	
2025	7,572	12,307	57,000	4.6	

RED=7 day concurrent season

Deer Population

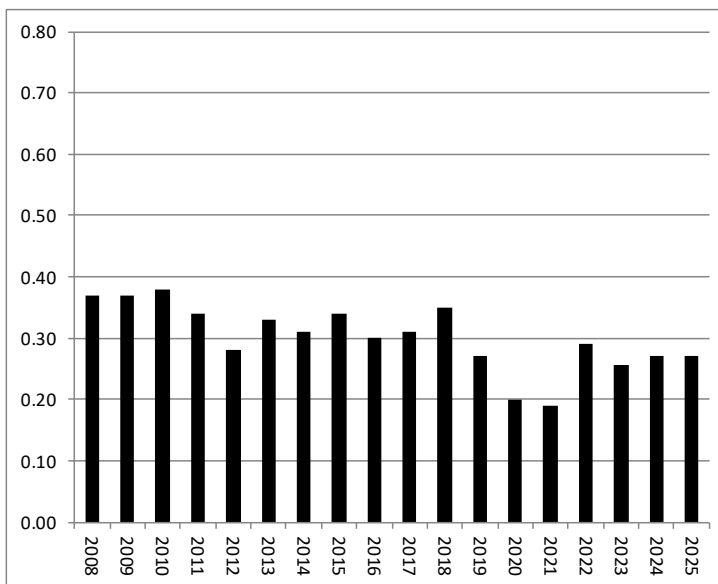
6-yr Trend Stable

Year	Total	6-yr Trend	Stable
2008			
2009			
2010	53,463		
2011	59,992		
2012	70,995		
2013	73,375		
2014	65,850		
2015	57,215		
2016	80,951		
2017	83,646		
2018	120,406		
2019	74,138		
2020	96,260		
2021	128,416		
2022	98,923		
2023	107,504		
2024	66,756		
2025	89,089		
2026	72,734		

WMU 2G

DEER HEALTH: Fawn to Doe Ratio² 6-yr Trend Stable

Year	Total
2008	0.37
2009	0.37
2010	0.38
2011	0.34
2012	0.28
2013	0.33
2014	0.31
2015	0.34
2016	0.30
2017	0.31
2018	0.35
2019	0.27
2020	0.20
2021	0.19
2022	0.29
2023	0.26
2024	0.27
2025	0.27



FOREST HEALTH NA

No new data used for the forest health measures. Please see past reports for previous information.

DEER-HUMAN CONFLICTS Citizen Survey Results Just Right

Year	% Too high	% Just right	% Too low
2011	3%	39%	55%
2019	13%	49%	35%
2023	14%	47%	30%

Antlerless Allocation

Objective: Reduce (CWD detected within 10 miles of WMU) 57,000

¹ - The number of antlerless licenses sold that it takes to harvest an antlerless deer. The number sold will differ from the allocation.

² - Harvest fawn to doe ratio is calculated as percent of fawns in the antlerless harvest.

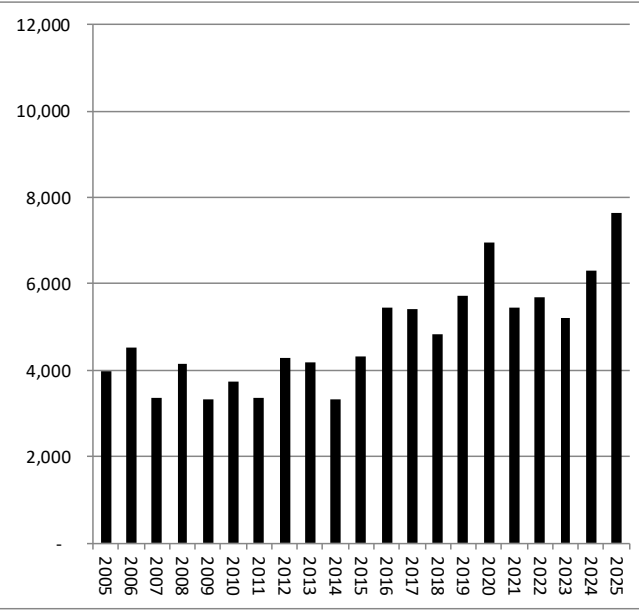
2026-27 Pennsylvania Game Commission Antlerless Allocation Worksheet

WMU 3A

WMU Characteristics

% Developed	% Forest	%Ag/Field	%Public	Area (sq mi)
2%	78%	17%	10%	1,506

Deer Harvest

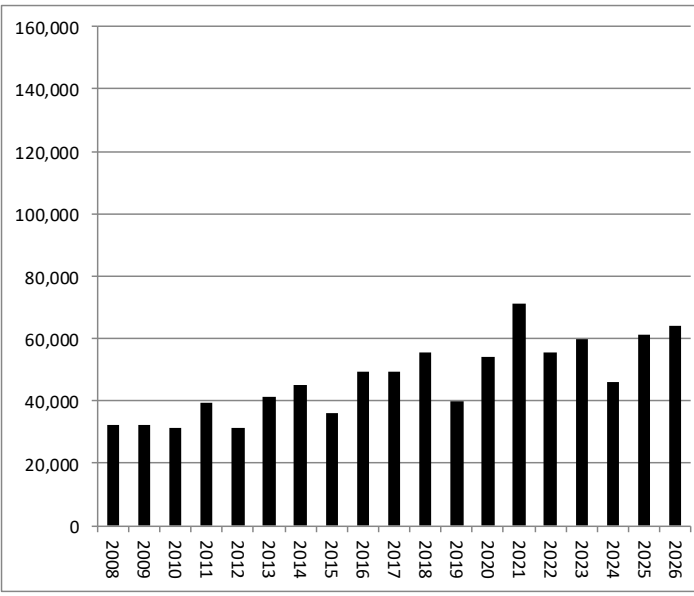
Year	Antlered	Antlerless	Allocation	Lic/Deer ¹	Antlered Harvest Estimate
2005	3,981	8,657	27,000	3.1	
2006	4,527	8,818	29,000	3.2	
2007	3,359	7,803	29,000	3.6	
2008	4,132	7,478	26,000	3.4	
2009	3,310	5,998	26,000	4.4	
2010	3,751	6,469	25,247	3.9	
2011	3,345	6,672	26,000	3.9	
2012	4,278	6,673	26,000	3.9	
2013	4,177	5,430	23,000	4.2	
2014	3,308	4,253	18,000	4.2	
2015	4,314	4,005	19,000	4.8	
2016	5,432	3,776	15,000	4.0	
2017	5,419	5,014	20,000	4.0	
2018	4,825	7,430	22,000	3.0	
2019	5,704	5,663	20,000	3.5	
2020	6,968	6,694	21,000	3.1	
2021	5,442	5,441	19,000	3.6	
2022	5,695	5,648	19,000	3.4	
2023	5,209	6,024	21,000	3.5	
2024	6,286	6,603	21,000	3.2	
2025	7,633	6,929	21,000	3.1	

RED=7 day concurrent season

POST-HUNT Deer Population

6-yr Trend

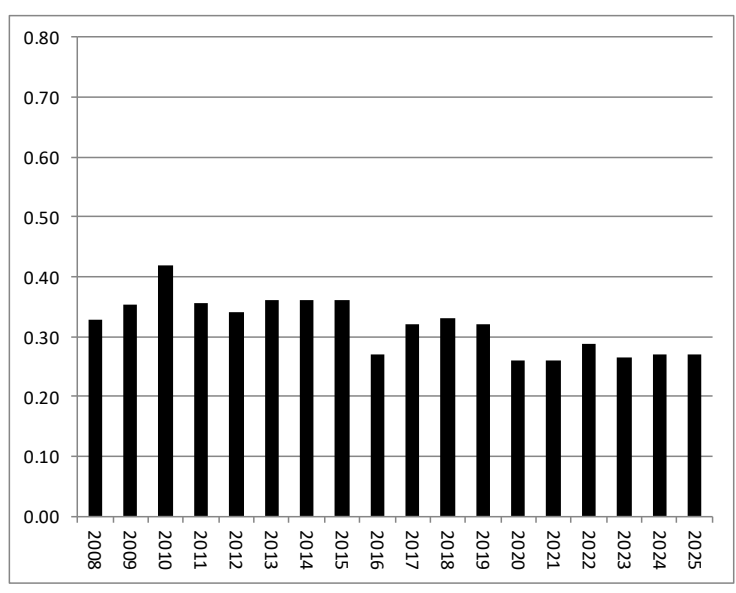
Stable

Year	Total	6-yr Trend
2008	32,425	
2009	32,513	
2010	31,412	
2011	39,532	
2012	31,224	
2013	41,358	
2014	45,317	
2015	36,181	
2016	49,307	
2017	49,426	
2018	55,441	
2019	39,832	
2020	54,040	
2021	71,376	
2022	55,494	
2023	59,595	
2024	45,870	
2025	61,231	
2026	64,011	

WMU 3A

DEER HEALTH: Fawn to Doe Ratio² 6-yr Trend Stable

Year	Total
2008	0.33
2009	0.35
2010	0.42
2011	0.36
2012	0.34
2013	0.36
2014	0.36
2015	0.36
2016	0.27
2017	0.32
2018	0.33
2019	0.32
2020	0.26
2021	0.26
2022	0.29
2023	0.27
2024	0.27
2025	0.27



FOREST HEALTH NA

No new data used for the forest health measures. Please see past reports for previous information.

DEER-HUMAN CONFLICTS Citizen Survey Results Just Right

Year	% Too high	% Just right	% Too low
2011	3%	32%	59%
2019	18%	57%	21%
2023	27%	48%	18%

Antlerless Allocation

Objective: Stabilize 21,000

¹ - The number of antlerless licenses sold that it takes to harvest an antlerless deer. The number sold will differ from the allocation.
² - Harvest fawn to doe ratio is calculated as percent of fawns in the antlerless harvest.

2026-27 Pennsylvania Game Commission Antlerless Allocation Worksheet

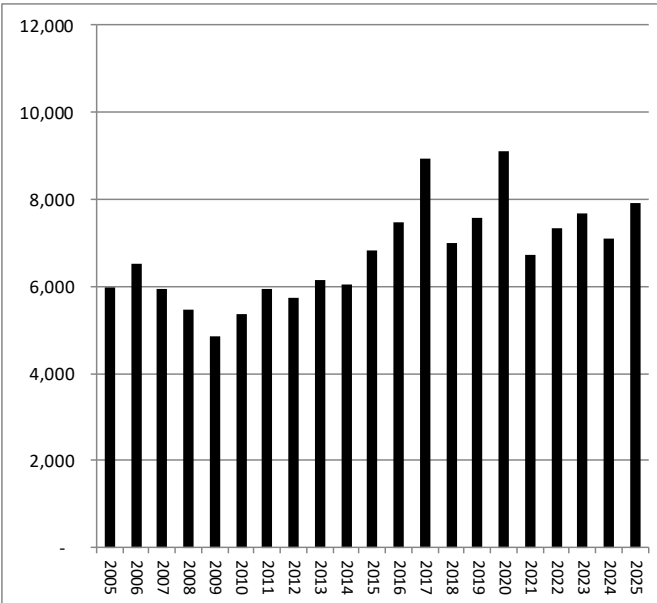
WMU 3B

WMU Characteristics

% Developed	% Forest	%Ag/Field	%Public	Area (sq mi)
6%	79%	11%	21%	2,218

Deer Harvest

Year	Antlered	Antlerless	Allocation	Lic/Deer ¹	Antlered Harvest Estimate
2005	5,980	10,871	41,000	3.7	
2006	6,530	10,563	43,000	4.0	
2007	5,933	10,177	43,000	4.2	
2008	5,469	9,857	43,000	4.3	
2009	4,865	9,112	43,000	4.7	
2010	5,369	7,585	33,761	4.5	
2011	5,935	7,707	40,000	5.2	
2012	5,752	8,701	40,000	4.6	
2013	6,153	8,718	39,000	4.5	
2014	6,039	8,055	33,000	4.1	
2015	6,840	7,359	28,000	3.8	
2016	7,481	7,290	28,000	3.8	
2017	8,945	6,970	30,000	4.3	
2018	6,977	8,354	29,000	3.5	
2019	7,558	10,264	38,000	3.7	
2020	9,090	8,507	33,000	3.9	
2021	6,708	7,650	30,000	4.0	
2022	7,322	8,931	33,000	3.7	
2023	7,681	7,554	32,000	4.2	
2024	7,100	8,458	34,000	4.0	
2025	7,911	14,079	53,000	3.8	



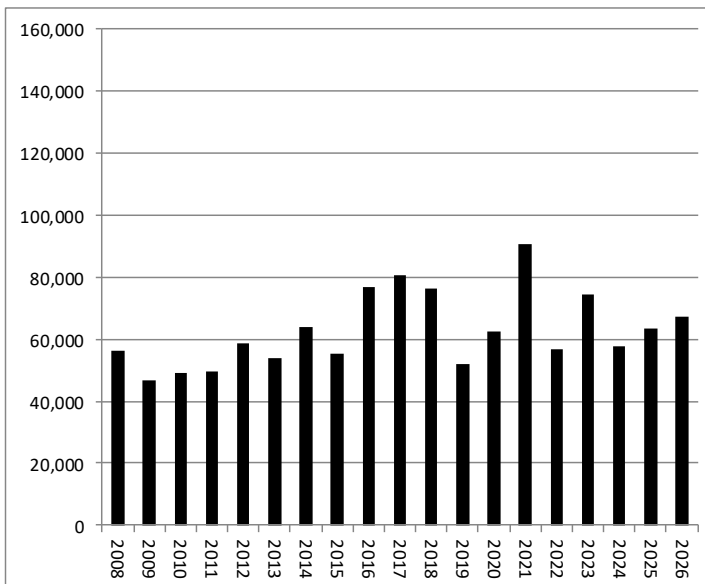
RED=7 day concurrent season

Post-HUNT Deer Population

6-yr Trend

Stable

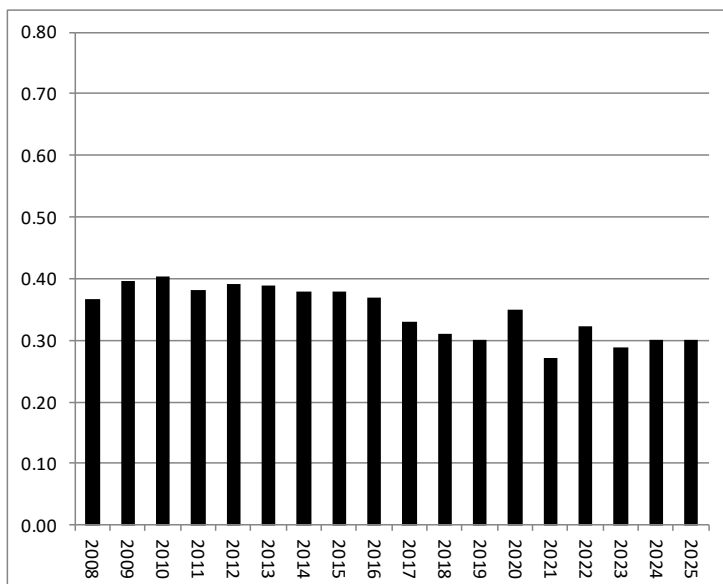
Year	Total
2008	56,162
2009	46,869
2010	48,895
2011	49,768
2012	58,481
2013	53,709
2014	63,803
2015	55,249
2016	76,808
2017	80,598
2018	76,249
2019	51,976
2020	62,489
2021	90,795
2022	56,589
2023	74,283
2024	57,893
2025	63,284
2026	67,271



WMU 3B

DEER HEALTH: Fawn to Doe Ratio² 6-yr Trend Stable

Year	Total
2008	0.37
2009	0.40
2010	0.40
2011	0.38
2012	0.39
2013	0.39
2014	0.38
2015	0.38
2016	0.37
2017	0.33
2018	0.31
2019	0.30
2020	0.35
2021	0.27
2022	0.32
2023	0.29
2024	0.30
2025	0.30



FOREST HEALTH NA

No new data used for the forest health measures. Please see past reports for previous information.

DEER-HUMAN CONFLICTS Citizen Survey Results Just Right

Year	% Too high	% Just right	% Too low
2011	7%	59%	24%
2019	20%	55%	17%
2023	30%	52%	13%

Antlerless Allocation

Objective: Reduce (CWD detection within WMU) 53,000

¹ - The number of antlerless licenses sold that it takes to harvest an antlerless deer. The number sold will differ from the allocation.

² - Harvest fawn to doe ratio is calculated as percent of fawns in the antlerless harvest.

2026-27 Pennsylvania Game Commission Antlerless Allocation Worksheet

WMU 3C

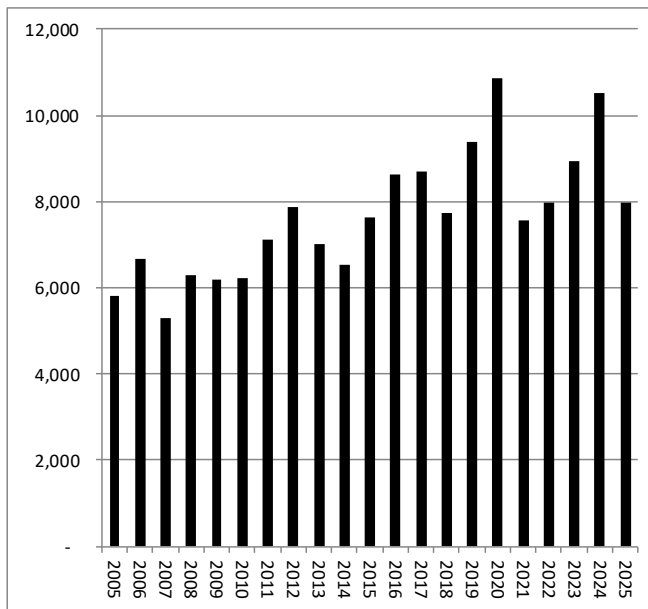
WMU Characteristics

% Developed	% Forest	%Ag/Field	%Public	Area (sq mi)
4%	75%	16%	3%	2,187

Deer Harvest

Year	Antlered	Antlerless	Allocation	Lic/Deer ¹
2005	5,821	11,198	32,000	2.8
2006	6,673	9,248	27,000	2.9
2007	5,278	9,586	27,000	2.8
2008	6,288	7,258	27,000	3.7
2009	6,196	7,084	27,000	3.9
2010	6,211	8,309	26,358	3.2
2011	7,103	9,943	29,000	2.9
2012	7,854	10,508	35,000	3.3
2013	7,004	12,683	35,000	2.8
2014	6,526	10,302	32,000	3.1
2015	7,614	10,460	36,000	3.4
2016	8,629	10,968	36,000	3.3
2017	8,703	11,860	42,000	3.5
2018	7,739	12,172	38,000	3.1
2019	9,382	12,808	46,000	3.6
2020	10,843	14,538	49,000	3.4
2021	7,569	9,366	33,000	3.6
2022	7,978	12,039	37,000	3.1
2023	8,935	10,564	40,000	3.8
2024	10,527	12,299	40,000	3.3
2025	7,957	14,672	57,000	3.9

Antlered Harvest Estimate



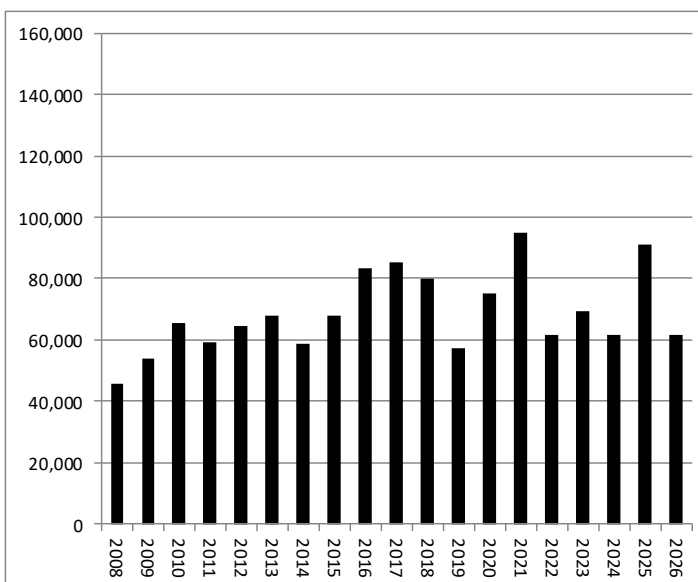
RED=7 day concurrent season

POST-HUNT Deer Population

6-yr Trend

Stable

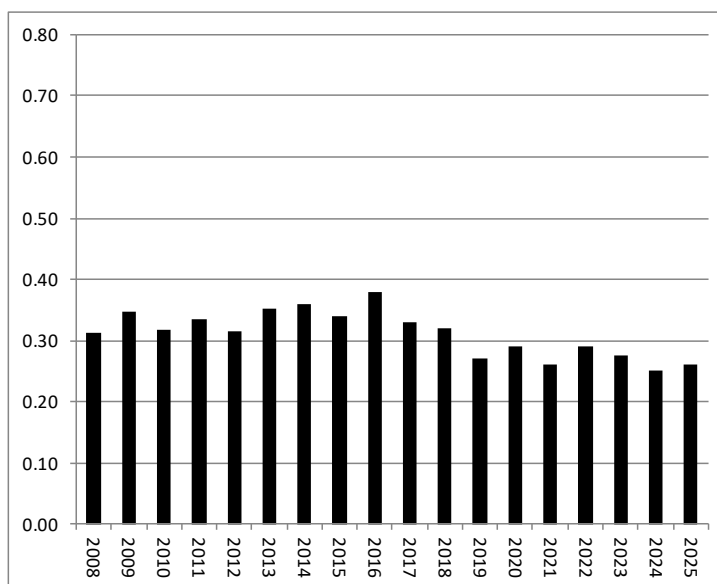
Year	Total
2008	45,511
2009	54,141
2010	65,624
2011	59,245
2012	64,359
2013	67,720
2014	58,925
2015	67,997
2016	83,206
2017	85,083
2018	79,925
2019	57,169
2020	75,360
2021	94,807
2022	61,771
2023	69,345
2024	61,856
2025	91,173
2026	61,748



WMU 3C

DEER HEALTH: Fawn to Doe Ratio² 6-yr Trend Stable

Year	Total
2008	0.31
2009	0.35
2010	0.32
2011	0.34
2012	0.32
2013	0.35
2014	0.36
2015	0.34
2016	0.38
2017	0.33
2018	0.32
2019	0.27
2020	0.29
2021	0.26
2022	0.29
2023	0.28
2024	0.25
2025	0.26



FOREST HEALTH NA

No new data used for the forest health measures. Please see past reports for previous information.

DEER-HUMAN CONFLICTS Citizen Survey Results Just Right

Year	% Too high	% Just right	% Too low
2011	10%	61%	20%
2019	30%	55%	11%
2023	28%	56%	11%

Antlerless Allocation

Objective: Reduce (CWD detection within WMU) 57,000

¹ - The number of antlerless licenses sold that it takes to harvest an antlerless deer. The number sold will differ from the allocation.

² - Harvest fawn to doe ratio is calculated as percent of fawns in the antlerless harvest.

2026-27 Pennsylvania Game Commission Antlerless Allocation Worksheet

WMU 3D

WMU Characteristics

% Developed	% Forest	%Ag/Field	%Public	Area (sq mi)
11%	74%	6%	16%	2,101

Deer Harvest

Year	Antlered	Antlerless	Allocation	Lic/Deer ¹	Antlered Harvest Estimate
2005	3,865	7,254	38,000	5.1	
2006	4,969	7,445	38,000	5.0	
2007	3,647	7,017	38,000	5.3	
2008	3,899	6,925	37,000	5.3	
2009	3,096	6,265	37,000	5.9	
2010	3,884	5,509	31,622	5.8	
2011	4,509	7,163	39,000	5.4	
2012	4,039	6,010	39,000	6.5	
2013	3,446	4,986	32,000	6.4	
2014	4,155	5,203	25,000	4.8	
2015	3,500	3,655	25,000	6.9	
2016	4,272	4,235	25,000	5.9	
2017	4,656	4,187	25,000	5.9	
2018	5,189	5,690	25,000	4.4	
2019	6,016	4,932	25,000	5.1	
2020	6,180	6,366	36,000	5.7	
2021	4,729	6,338	36,000	5.7	
2022	5,475	7,416	41,000	5.5	
2023	6,158	7,287	41,000	5.6	
2024	5,553	7,659	41,000	5.4	
2025	6,004	9,641	52,000	5.4	

RED=7 day concurrent season

POST-HUNT Deer Population

6-yr Trend

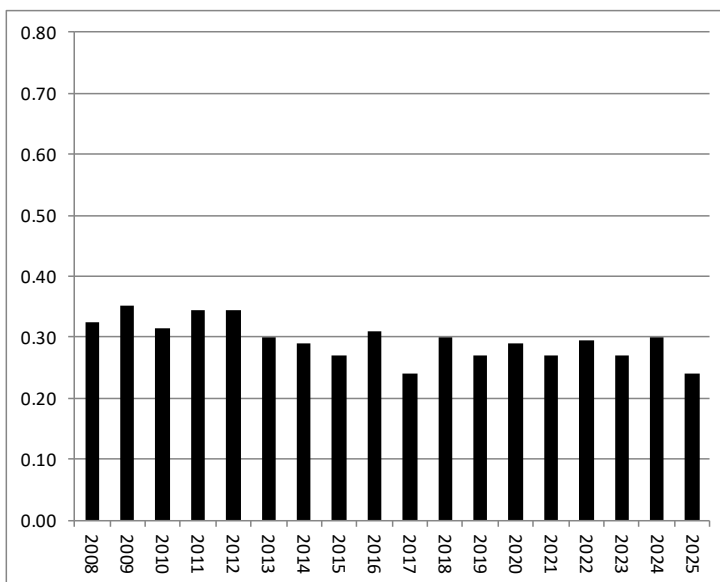
Stable

Year	Total	POST-HUNT Deer Population
2008	31,623	
2009	37,563	
2010	25,378	
2011	30,250	
2012	31,299	
2013	29,225	
2014	25,127	
2015	33,778	
2016	28,957	
2017	33,302	
2018	30,727	
2019	33,798	
2020	48,663	
2021	45,355	
2022	32,058	
2023	52,788	
2024	46,978	
2025	58,689	
2026	51,366	

WMU 3D

DEER HEALTH: Fawn to Doe Ratio² 6-yr Trend Stable

Year	Total
2008	0.32
2009	0.35
2010	0.31
2011	0.34
2012	0.34
2013	0.30
2014	0.29
2015	0.27
2016	0.31
2017	0.24
2018	0.30
2019	0.27
2020	0.29
2021	0.27
2022	0.30
2023	0.27
2024	0.30
2025	0.24



FOREST HEALTH NA

No new data used for the forest health measures. Please see past reports for previous information.

DEER-HUMAN CONFLICTS Citizen Survey Results Just Right

Year	% Too high	% Just right	% Too low
2011	13%	57%	24%
2019	30%	52%	13%
2023	28%	50%	18%

Antlerless Allocation

Objective: Reduce (CWD detected within 10 miles of WMU) 52,000

¹ - The number of antlerless licenses sold that it takes to harvest an antlerless deer. The number sold will differ from the allocation.

² - Harvest fawn to doe ratio is calculated as percent of fawns in the antlerless harvest.

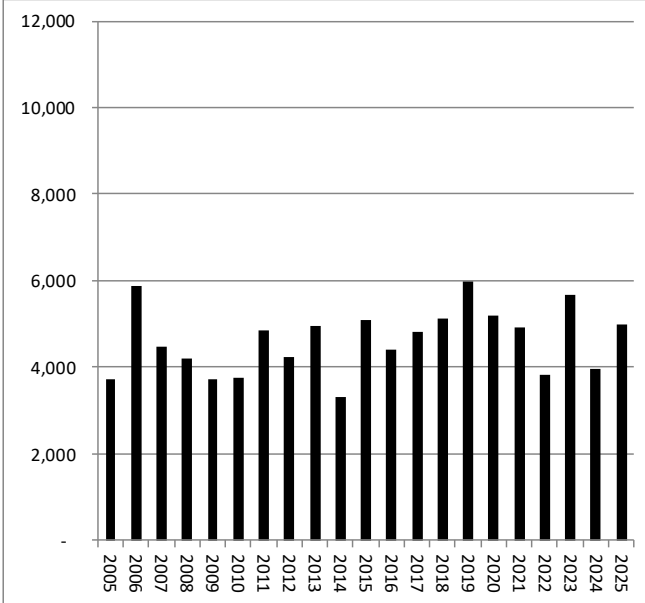
2026-27 Pennsylvania Game Commission Antlerless Allocation Worksheet

WMU 4A

WMU Characteristics

% Developed	% Forest	%Ag/Field	%Public	Area (sq mi)
4%	70%	24%	15%	1,736

Deer Harvest

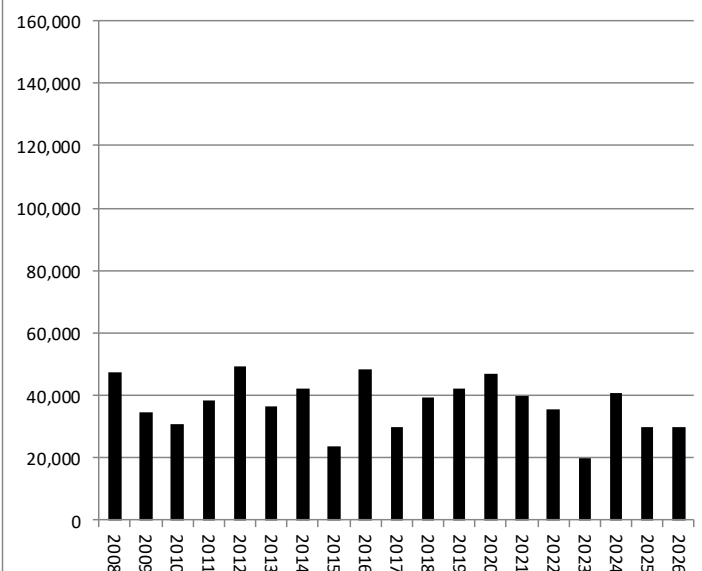
Year	Antlered	Antlerless	Allocation	Lic/Deer ¹	Antlered Harvest Estimate
2005	3,714	7,578	35,000	4.5	
2006	5,871	7,827	29,000	3.6	
2007	4,477	6,735	29,000	4.2	
2008	4,187	6,874	29,000	4.2	
2009	3,733	7,414	29,000	3.9	
2010	3,761	6,401	27,521	4.3	
2011	4,849	6,527	28,000	4.3	
2012	4,245	6,463	29,000	4.5	
2013	4,961	5,981	28,000	4.7	
2014	3,317	6,802	28,000	5.6	
2015	5,095	6,360	30,000	4.7	
2016	4,423	5,726	30,000	5.2	
2017	4,810	6,475	30,000	4.6	
2018	5,142	6,395	38,000	5.5	
2019	5,981	5,250	41,000	5.8	
2020	5,183	10,849	49,000	4.0	
2021	4,909	10,266	50,000	4.7	
2022	3,809	11,144	50,000	4.2	
2023	5,672	9,267	61,000	6.6	
2024	3,977	9,737	61,000	6.2	
2025	5,005	8,523	64,000	6.5	

RED=7 day concurrent season

POST-HUNT Deer Population

6-yr Trend

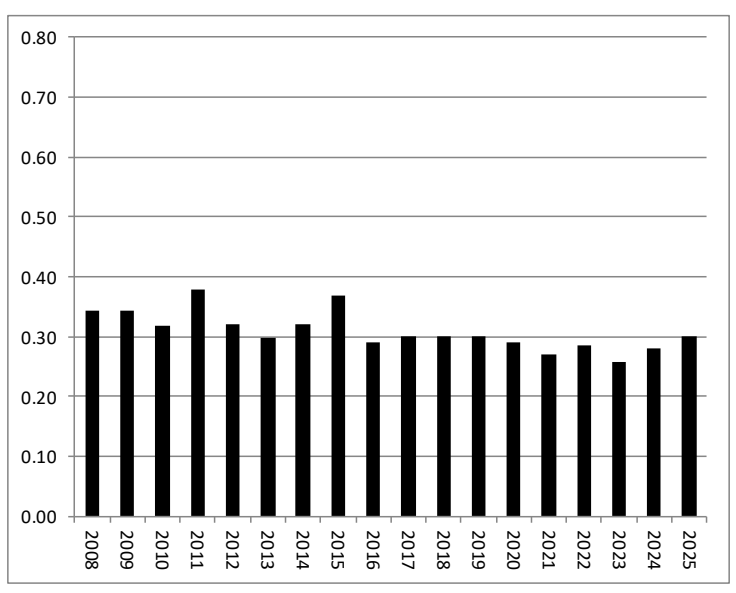
Stable

Year	Total	6-yr Trend	Stable
2008	47,414		
2009	34,628		
2010	30,789		
2011	38,125		
2012	49,191		
2013	36,579		
2014	42,196		
2015	23,772		
2016	48,538		
2017	29,746		
2018	39,238		
2019	42,174		
2020	47,047		
2021	39,911		
2022	35,442		
2023	19,763		
2024	40,589		
2025	29,775		
2026	29,986		

WMU 4A

DEER HEALTH: Fawn to Doe Ratio² 6-yr Trend Stable

Year	Total
2008	0.34
2009	0.34
2010	0.32
2011	0.38
2012	0.32
2013	0.30
2014	0.32
2015	0.37
2016	0.29
2017	0.30
2018	0.30
2019	0.30
2020	0.29
2021	0.27
2022	0.29
2023	0.26
2024	0.28
2025	0.30



FOREST HEALTH NA

No new data used for the forest health measures. Please see past reports for previous information.

DEER-HUMAN CONFLICTS Citizen Survey Results Just Right

Year	% Too high	% Just right	% Too low
2011	4%	45%	42%
2019	14%	45%	37%
2023	15%	51%	30%

Antlerless Allocation

Objective: Reduce (CWD detected within WMU) 64,000

¹ - The number of antlerless licenses sold that it takes to harvest an antlerless deer. The number sold will differ from the allocation.
² - Harvest fawn to doe ratio is calculated as percent of fawns in the antlerless harvest.

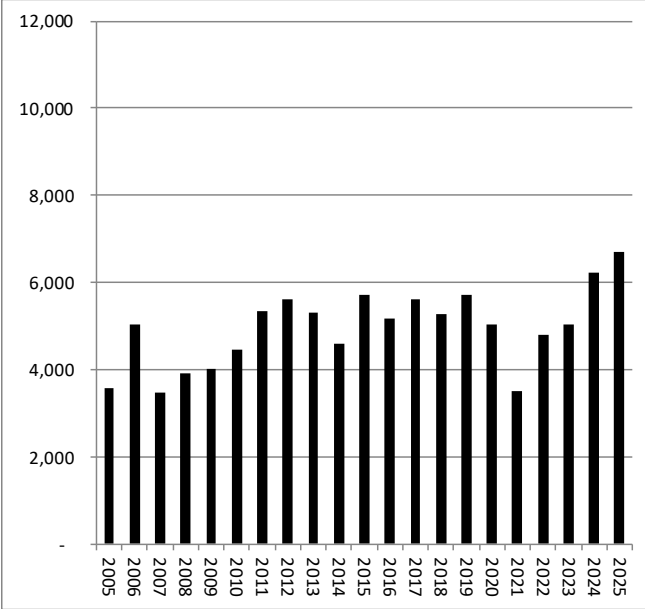
2026-27 Pennsylvania Game Commission Antlerless Allocation Worksheet

WMU 4B

WMU Characteristics

% Developed	% Forest	%Ag/Field	%Public	Area (sq mi)
6%	65%	27%	15%	1,591

Deer Harvest

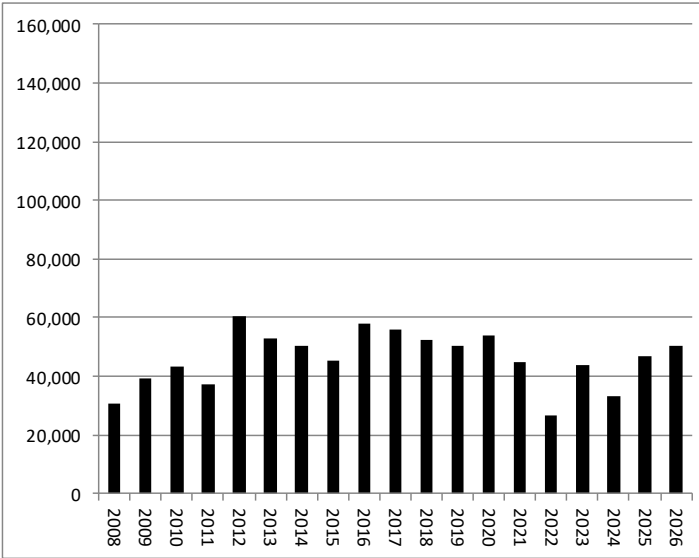
Year	Antlered	Antlerless	Allocation	Lic/Deer ¹	Antlered Harvest Estimate
2005	3,571	6,644	35,000	5.2	
2006	5,026	6,626	31,000	4.6	
2007	3,472	4,509	23,000	5.0	
2008	3,917	3,846	23,000	5.9	
2009	4,011	4,061	23,000	5.7	
2010	4,458	5,113	22,148	4.4	
2011	5,341	5,498	23,000	4.2	
2012	5,622	5,636	26,000	4.6	
2013	5,312	5,769	24,000	4.2	
2014	4,611	5,630	26,000	4.6	
2015	5,701	6,961	26,000	3.8	
2016	5,164	6,151	26,000	4.2	
2017	5,602	7,061	26,000	3.7	
2018	5,273	6,757	26,000	3.9	
2019	5,722	7,305	32,000	4.4	
2020	5,034	10,770	33,000	3.1	
2021	3,522	8,446	34,000	4.1	
2022	4,788	8,433	34,000	4.0	
2023	5,039	9,486	46,000	4.8	
2024	6,218	12,631	60,000	4.7	
2025	6,700	14,394	60,000	4.2	

RED=7 day concurrent season

POST-HUNT Deer Population

6-yr Trend

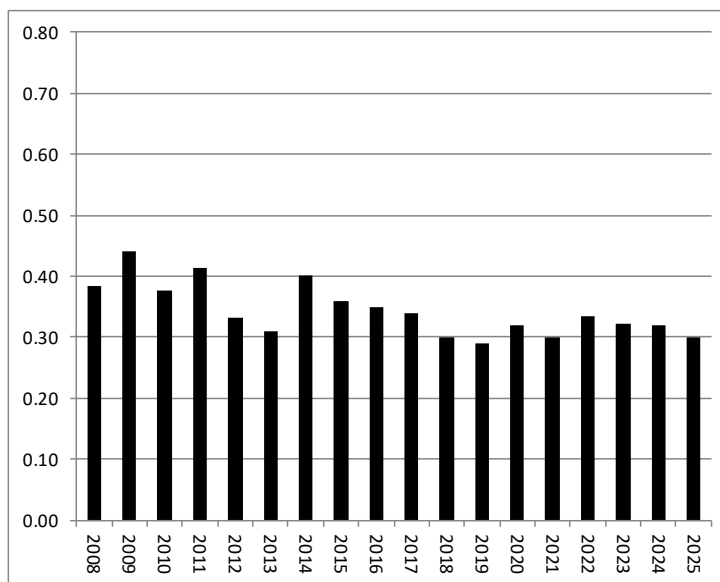
Stable

Year	Total	POST-HUNT Deer Population
2008	30,479	
2009	39,044	
2010	43,550	
2011	37,273	
2012	60,340	
2013	52,903	
2014	50,517	
2015	45,362	
2016	57,846	
2017	55,941	
2018	52,407	
2019	50,252	
2020	54,044	
2021	44,691	
2022	26,808	
2023	43,771	
2024	33,100	
2025	46,891	
2026	50,343	

WMU 4B

DEER HEALTH: Fawn to Doe Ratio² 6-yr Trend Stable

Year	Total
2008	0.38
2009	0.44
2010	0.38
2011	0.41
2012	0.33
2013	0.31
2014	0.40
2015	0.36
2016	0.35
2017	0.34
2018	0.30
2019	0.29
2020	0.32
2021	0.30
2022	0.33
2023	0.32
2024	0.32
2025	0.30



FOREST HEALTH NA

No new data used for the forest health measures. Please see past reports for previous information.

DEER-HUMAN CONFLICTS Citizen Survey Results Just Right

Year	% Too high	% Just right	% Too low
2011	6%	53%	33%
2019	16%	53%	21%
2023	19%	48%	27%

Antlerless Allocation

Objective: Reduce (CWD detected within WMU) 71,000

¹ - The number of antlerless licenses sold that it takes to harvest an antlerless deer. The number sold will differ from the allocation.

² - Harvest fawn to doe ratio is calculated as percent of fawns in the antlerless harvest.

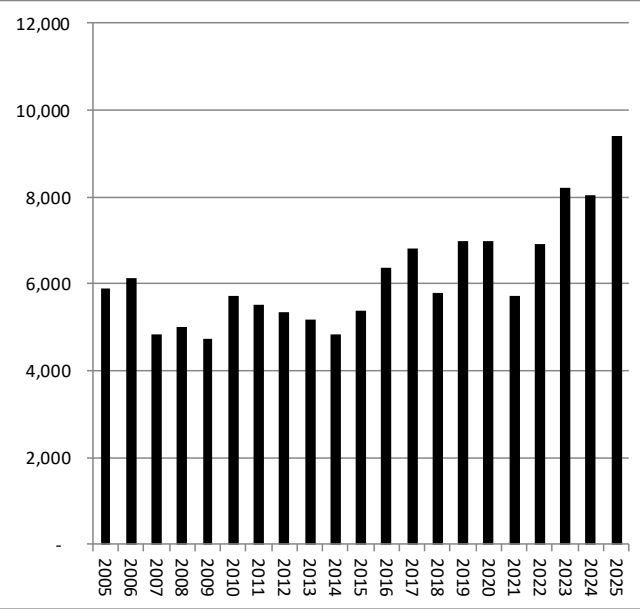
2026-27 Pennsylvania Game Commission Antlerless Allocation Worksheet

WMU 4C

WMU Characteristics

% Developed	% Forest	%Ag/Field	%Public	Area (sq mi)
8%	71%	17%	15%	1,717

Deer Harvest

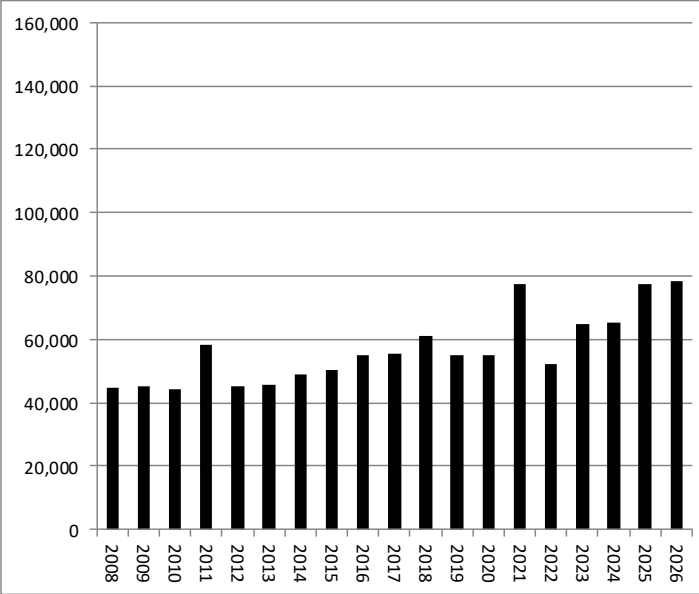
Year	Antlered	Antlerless	Allocation	Lic/Deer ¹	Antlered Harvest Estimate
2005	5,891	9,805	39,000	3.9	
2006	6,115	8,883	39,000	4.2	
2007	4,828	9,375	39,000	4.1	
2008	5,015	8,027	35,000	4.3	
2009	4,745	7,163	35,000	4.9	
2010	5,724	8,357	34,351	4.2	
2011	5,525	7,392	35,000	4.7	
2012	5,335	7,823	35,000	4.5	
2013	5,180	6,922	27,000	3.9	
2014	4,830	4,996	25,000	5.1	
2015	5,381	4,976	25,000	5.1	
2016	6,381	5,273	25,000	4.8	
2017	6,799	6,464	29,000	4.5	
2018	5,781	7,155	30,000	4.2	
2019	6,975	8,328	36,000	4.3	
2020	6,998	8,055	32,000	4.0	
2021	5,713	6,425	29,000	4.6	
2022	6,900	8,218	31,000	3.8	
2023	8,221	6,698	32,000	4.8	
2024	8,040	11,984	53,000	4.4	
2025	9,386	13,864	51,000	3.7	

RED=7 day concurrent season

POST-HUNT Deer Population

6-yr Trend

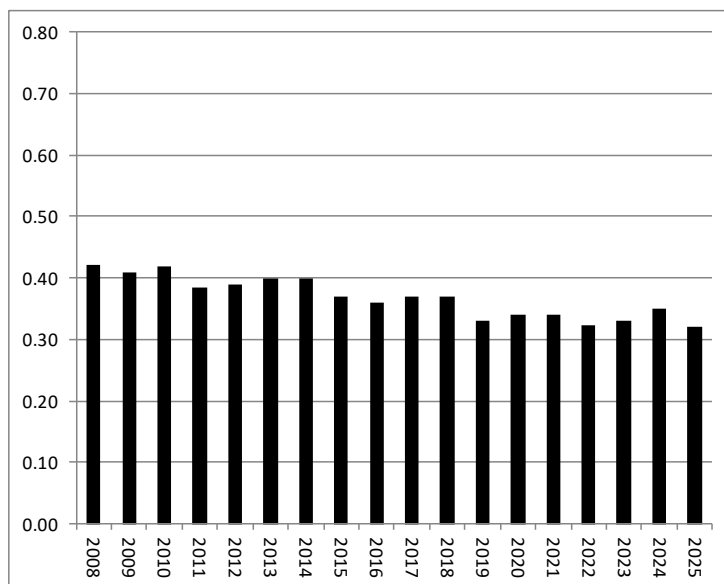
Stable

Year	Total	6-yr Trend	Stable
2008	44,569		
2009	45,224		
2010	44,256		
2011	58,091		
2012	45,093		
2013	45,586		
2014	49,072		
2015	50,265		
2016	55,068		
2017	55,311		
2018	61,317		
2019	55,122		
2020	55,238		
2021	77,639		
2022	52,314		
2023	64,683		
2024	65,482		
2025	77,599		
2026	78,292		

WMU 4C

DEER HEALTH: Fawn to Doe Ratio² 6-yr Trend Stable

Year	Total
2008	0.42
2009	0.41
2010	0.42
2011	0.38
2012	0.39
2013	0.40
2014	0.40
2015	0.37
2016	0.36
2017	0.37
2018	0.37
2019	0.33
2020	0.34
2021	0.34
2022	0.32
2023	0.33
2024	0.35
2025	0.32



FOREST HEALTH NA

No new data used for the forest health measures. Please see past reports for previous information.

DEER-HUMAN CONFLICTS Citizen Survey Results Just Right

Year	% Too high	% Just right	% Too low
2011	7%	56%	26%
2019	23%	52%	21%
2023	20%	50%	20%

Antlerless Allocation

Objective: Reduce (CWD detected within WMU) 51,000

¹ - The number of antlerless licenses sold that it takes to harvest an antlerless deer. The number sold will differ from the allocation.

² - Harvest fawn to doe ratio is calculated as percent of fawns in the antlerless harvest.

2026-27 Pennsylvania Game Commission Antlerless Allocation Worksheet

WMU 4D

WMU Characteristics

% Developed	% Forest	%Ag/Field	%Public	Area (sq mi)
6%	70%	22%	28%	2,743

Deer Harvest

Year	Antlered	Antlerless	Allocation	Lic/Deer ¹	Antlered Harvest Estimate
2005	5,591	8,354	40,000	4.7	
2006	6,776	9,878	40,000	4.0	
2007	5,765	8,073	40,000	4.9	
2008	6,593	9,310	40,000	4.2	
2009	4,971	7,192	40,000	5.6	
2010	6,321	5,472	30,052	5.6	
2011	7,144	6,561	37,000	5.7	
2012	6,922	6,325	36,000	5.7	
2013	7,165	8,225	35,000	4.3	
2014	6,461	6,832	33,000	5.0	
2015	7,240	7,197	33,000	4.6	
2016	7,921	7,234	34,000	4.7	
2017	10,594	8,381	34,000	4.0	
2018	8,299	8,703	34,000	3.9	
2019	8,740	10,266	46,000	4.5	
2020	9,141	12,256	45,000	3.7	
2021	7,196	10,293	55,000	5.4	
2022	7,861	12,186	55,000	4.5	
2023	8,398	13,483	77,000	5.7	
2024	8,594	15,826	77,000	4.9	
2025	9,388	15,439	83,000	5.4	

RED=7 day concurrent season

POST-HUNT Deer Population

6-yr Trend

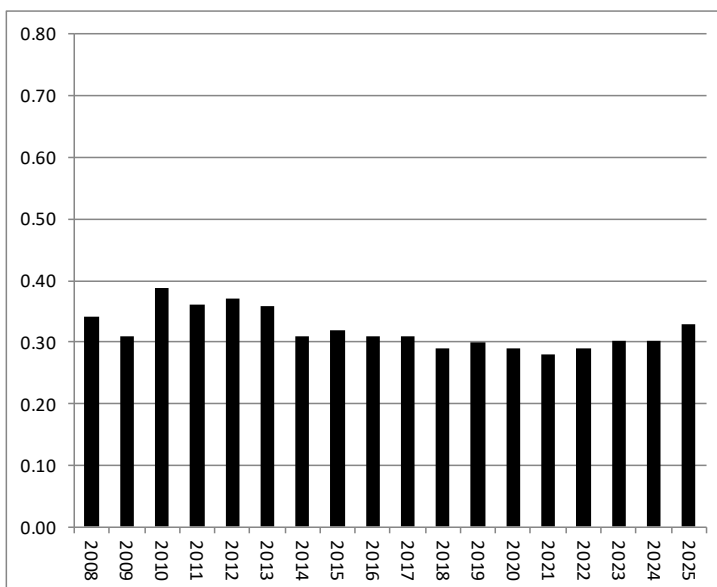
Stable

Year	Total
2008	43,299
2009	62,529
2010	46,284
2011	73,017
2012	70,495
2013	67,011
2014	61,428
2015	56,905
2016	60,398
2017	63,984
2018	99,997
2019	61,822
2020	71,983
2021	89,963
2022	66,855
2023	67,514
2024	73,767
2025	63,754
2026	75,982

WMU 4D

DEER HEALTH: Fawn to Doe Ratio² 6-yr Trend Declining

Year	Total
2008	0.34
2009	0.31
2010	0.39
2011	0.36
2012	0.37
2013	0.36
2014	0.31
2015	0.32
2016	0.31
2017	0.31
2018	0.29
2019	0.30
2020	0.29
2021	0.28
2022	0.29
2023	0.30
2024	0.30
2025	0.33



FOREST HEALTH NA

No new data used for the forest health measures. Please see past reports for previous information.

DEER-HUMAN CONFLICTS Citizen Survey Results Just Right

Year	% Too high	% Just right	% Too low
2011	8%	46%	38%
2019	20%	48%	26%
2023	13%	51%	31%

Antlerless Allocation

Objective: Reduce (CWD detected within WMU) 120,000

¹ - The number of antlerless licenses sold that it takes to harvest an antlerless deer. The number sold will differ from the allocation.

² - Harvest fawn to doe ratio is calculated as percent of fawns in the antlerless harvest.

2026-27 Pennsylvania Game Commission Antlerless Allocation Worksheet

WMU 4E

WMU Characteristics

% Developed	% Forest	%Ag/Field	%Public	Area (sq mi)
8%	54%	34%	4%	1,736

Deer Harvest

Year	Antlered	Antlerless	Allocation	Lic/Deer ¹	Antlered Harvest Estimate
2005	4,544	9,130	38,000	4.1	
2006	4,134	8,975	38,000	4.2	
2007	3,314	8,119	38,000	4.6	
2008	4,270	7,193	30,000	4.1	
2009	4,064	6,287	30,000	4.8	
2010	4,768	5,923	26,899	4.6	
2011	5,076	6,054	29,000	4.8	
2012	4,960	6,079	28,000	4.6	
2013	6,287	7,707	26,000	3.4	
2014	5,847	5,919	21,000	3.6	
2015	6,202	6,914	25,000	3.6	
2016	7,294	7,474	25,000	3.4	
2017	8,241	8,735	27,500	3.1	
2018	6,980	9,345	32,000	3.4	
2019	7,314	9,513	34,000	3.6	
2020	8,625	11,209	37,000	3.3	
2021	7,894	11,778	42,000	3.6	
2022	7,990	12,430	42,000	3.4	
2023	8,054	13,726	54,000	3.9	
2024	7,401	15,876	61,000	3.8	
2025	7,521	17,490	61,000	3.5	

RED=7 day concurrent season

POST-HUNT Deer Population

6-yr Trend

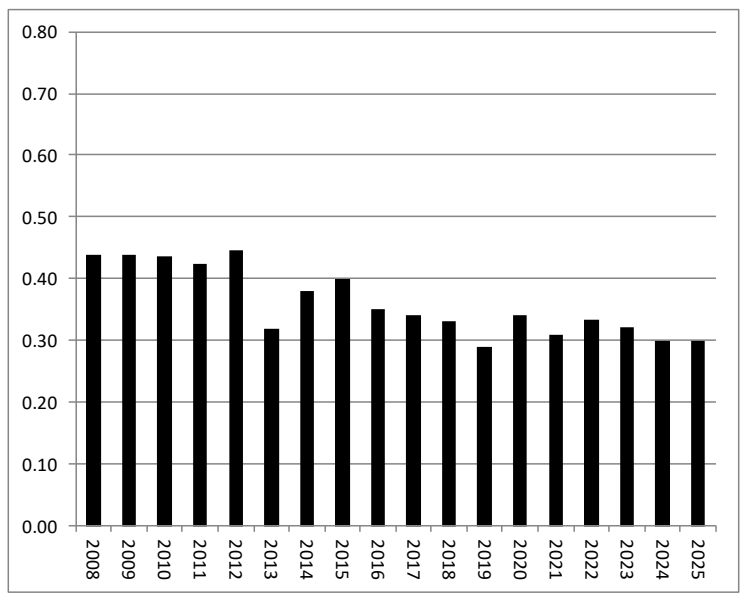
Decreasing

Year	Total	POST-HUNT Deer Population
2008	35,121	
2009	37,339	
2010	36,311	
2011	51,706	
2012	44,225	
2013	48,318	
2014	50,707	
2015	59,206	
2016	64,923	
2017	62,285	
2018	70,064	
2019	60,055	
2020	59,120	
2021	77,399	
2022	67,325	
2023	67,790	
2024	63,830	
2025	61,559	
2026	47,161	

WMU 4E

DEER HEALTH: Fawn to Doe Ratio² 6-yr Trend Stable

Year	Total
2008	0.44
2009	0.44
2010	0.44
2011	0.42
2012	0.45
2013	0.32
2014	0.38
2015	0.40
2016	0.35
2017	0.34
2018	0.33
2019	0.29
2020	0.34
2021	0.31
2022	0.33
2023	0.32
2024	0.30
2025	0.30



FOREST HEALTH NA

No new data used for the forest health measures. Please see past reports for previous information.

DEER-HUMAN CONFLICTS Citizen Survey Results Just Right

Year	% Too high	% Just right	% Too low
2011	8%	58%	28%
2019	30%	50%	16%
2023	22%	55%	17%

Antlerless Allocation

Objective: Reduce (CWD detected within WMU) 61,000

¹ - The number of antlerless licenses sold that it takes to harvest an antlerless deer. The number sold will differ from the allocation.
² - Harvest fawn to doe ratio is calculated as percent of fawns in the antlerless harvest.

2026-27 Pennsylvania Game Commission Antlerless Allocation Worksheet

WMU 5A

WMU Characteristics

% Developed	% Forest	%Ag/Field	%Public	Area (sq mi)
14%	35%	49%	11%	1,301

Deer Harvest

Year	Antlered	Antlerless	Allocation	Lic/Deer ¹	Antlered Harvest Estimate
2005	2,396	4,690	28,000	5.8	
2006	2,155	5,207	25,000	4.7	
2007	2,433	3,881	22,000	5.5	
2008	2,057	3,778	19,000	4.9	
2009	2,237	4,194	19,000	4.6	
2010	2,442	3,398	18,269	5.4	
2011	3,575	3,573	19,000	5.3	
2012	2,795	3,596	19,000	5.3	
2013	2,825	4,098	19,000	4.6	
2014	2,377	3,282	19,000	5.8	
2015	2,862	4,631	19,000	4.1	
2016	3,017	4,047	19,000	4.7	
2017	2,925	3,811	22,000	5.7	
2018	3,091	4,649	23,000	4.9	
2019	3,406	4,951	22,000	4.4	
2020	3,522	6,087	26,000	4.3	
2021	3,144	7,226	31,000	4.3	
2022	3,131	7,385	31,000	4.2	
2023	4,121	7,830	40,000	5.1	
2024	3,887	8,255	40,000	4.8	
2025	4,821	7,304	46,000	6.3	

RED=7 day concurrent season

POST-HUNT Deer Population

6-yr Trend

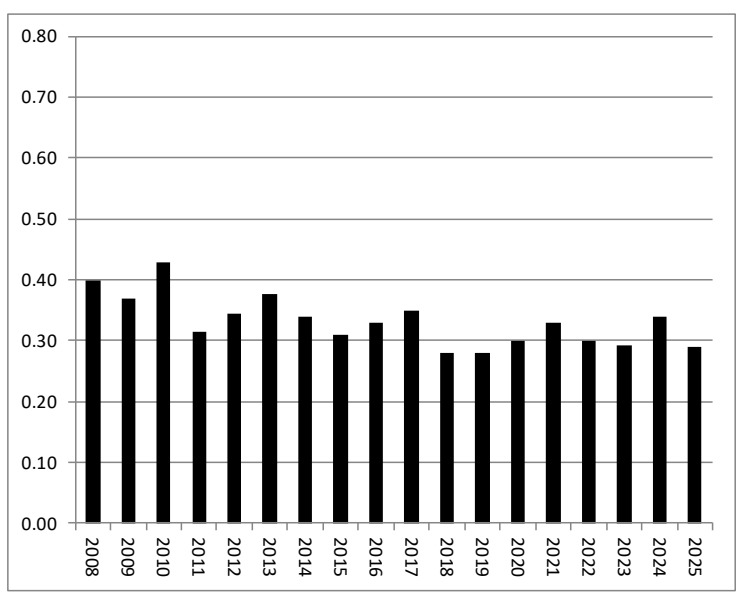
Stable

Year	Total	POST-HUNT Deer Population
2008	22,602	
2009	20,504	
2010	20,512	
2011	21,098	
2012	35,598	
2013	28,014	
2014	29,715	
2015	25,032	
2016	20,081	
2017	28,581	
2018	33,243	
2019	25,162	
2020	49,801	
2021	28,772	
2022	20,313	
2023	21,887	
2024	21,325	
2025	32,716	
2026	30,684	

WMU 5A

DEER HEALTH: Fawn to Doe Ratio² 6-yr Trend Stable

Year	Total
2008	0.40
2009	0.37
2010	0.43
2011	0.32
2012	0.35
2013	0.38
2014	0.34
2015	0.31
2016	0.33
2017	0.35
2018	0.28
2019	0.28
2020	0.30
2021	0.33
2022	0.30
2023	0.29
2024	0.34
2025	0.29



FOREST HEALTH NA

No new data used for the forest health measures. Please see past reports for previous information.

DEER-HUMAN CONFLICTS Citizen Survey Results Just Right

Year	% Too high	% Just right	% Too low
2011	5%	58%	25%
2019	19%	53%	23%
2023	15%	58%	18%

Antlerless Allocation

Objective: Reduce (CWD detected within WMU) 65,000

¹ - The number of antlerless licenses sold that it takes to harvest an antlerless deer. The number sold will differ from the allocation.
² - Harvest fawn to doe ratio is calculated as percent of fawns in the antlerless harvest.

2026-27 Pennsylvania Game Commission Antlerless Allocation Worksheet

WMU 5B

WMU Characteristics

% Developed	% Forest	%Ag/Field	%Public	Area (sq mi)
19%	28%	49%	2%	2,640

Deer Harvest

Year	Antlered	Antlerless	Allocation	Lic/Deer ¹	Antlered Harvest Estimate
2005	7,381	11,717	56,000	4.6	
2006	6,995	11,384	53,000	4.5	
2007	5,974	11,143	53,000	4.6	
2008	6,762	11,184	51,000	4.4	
2009	6,007	11,321	51,000	4.5	
2010	6,902	12,543	50,812	4.1	
2011	7,174	12,943	50,000	3.9	
2012	8,503	12,519	51,000	4.1	
2013	7,443	12,847	50,000	3.9	
2014	6,908	12,368	49,000	4.0	
2015	8,009	11,451	50,000	4.4	
2016	8,886	12,364	50,000	4.1	
2017	8,990	12,794	57,000	4.4	
2018	9,165	14,191	58,000	4.1	
2019	10,151	14,844	67,000	4.5	
2020	9,556	16,407	60,000	3.6	
2021	7,793	17,099	60,000	3.5	
2022	10,894	16,336	60,000	3.7	
2023	9,714	14,343	60,000	4.2	
2024	11,156	17,202	67,000	3.9	
2025	10,257	19,819	86,000	4.3	

RED=7 day concurrent season

POST-HUNT Deer Population

6-yr Trend

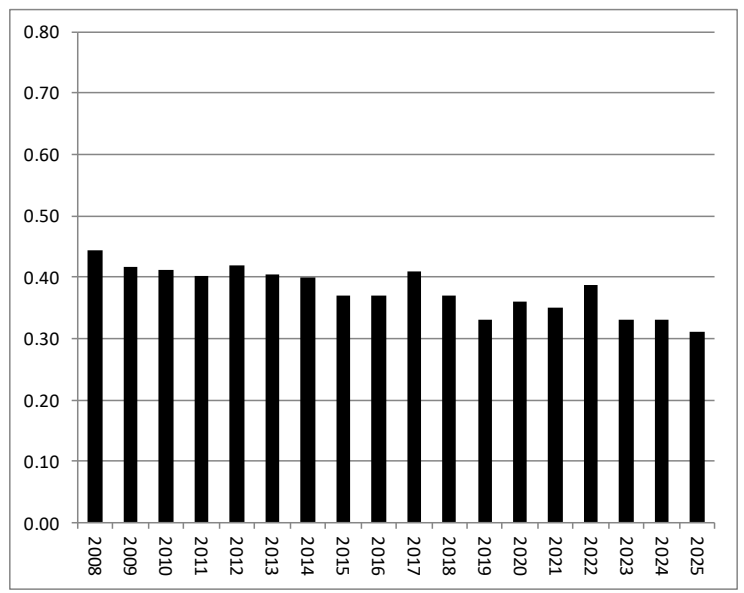
Stable

Year	Total	6-yr Trend
2008	54,020	
2009	59,568	
2010	53,213	
2011	55,951	
2012	60,723	
2013	75,260	
2014	63,591	
2015	60,538	
2016	66,282	
2017	73,573	
2018	85,790	
2019	77,893	
2020	76,623	
2021	91,713	
2022	62,401	
2023	101,325	
2024	71,599	
2025	81,899	
2026	77,772	

WMU 5B

DEER HEALTH: Fawn to Doe Ratio² 6-yr Trend Stable

Year	Total
2008	0.44
2009	0.42
2010	0.41
2011	0.40
2012	0.42
2013	0.41
2014	0.40
2015	0.37
2016	0.37
2017	0.41
2018	0.37
2019	0.33
2020	0.36
2021	0.35
2022	0.39
2023	0.33
2024	0.33
2025	0.31



FOREST HEALTH NA

No new data used for the forest health measures. Please see past reports for previous information.

DEER-HUMAN CONFLICTS Citizen Survey Results Just Right

Year	% Too high	% Just right	% Too low
2011	13%	58%	21%
2019	19%	51%	20%
2023	16%	51%	21%

Antlerless Allocation

Objective: Reduce (CWD detected within WMU) 86,000

¹ - The number of antlerless licenses sold that it takes to harvest an antlerless deer. The number sold will differ from the allocation.
² - Harvest fawn to doe ratio is calculated as percent of fawns in the antlerless harvest.

2026-27 Pennsylvania Game Commission Antlerless Allocation Worksheet

WMU 5C

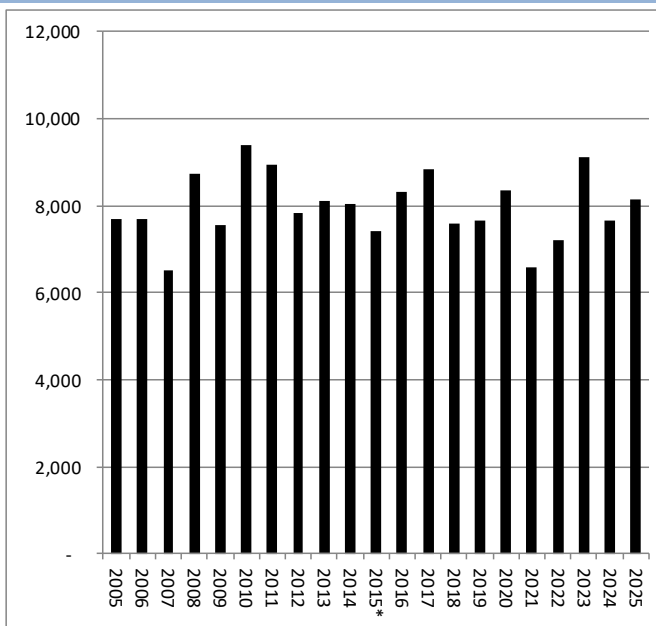
WMU Characteristics

% Developed	% Forest	%Ag/Field	%Public	Area (sq mi)
27%	37%	31%	1%	1,982

Deer Harvest

Year	Antlered	Antlerless	Allocation	Lic/Deer ¹
2005	7,701	17,589	71,000	3.9
2006	7,708	16,123	79,000	4.8
2007	6,526	18,864	84,000	4.3
2008	8,729	20,238	92,000	4.4
2009	7,566	23,214	113,000	4.8
2010	9,400	23,977	121,960	4.7
2011	8,928	24,234	117,000	4.4
2012	7,825	23,648	111,000	4.5
2013	8,096	21,711	103,000	4.7
2014	8,035	22,152	95,000	4.3
2015*	7,416	13,551	70,000	5.1
2016	8,328	15,643	70,000	4.4
2017	8,846	15,644	70,000	4.4
2018	7,584	16,400	70,000	4.2
2019	7,646	14,364	70,000	4.8
2020	8,352	15,194	70,000	4.6
2021	6,580	14,665	70,000	4.8
2022	7,199	16,665	70,000	4.2
2023	9,111	13,081	70,000	5.3
2024	7,664	16,973	79,000	4.7
2025	8,141	5,817	98,000	5.4

Antlered Harvest Estimate



* WMU Boundary Change

POST-HUNT Deer Population

6-yr Trend

Stable

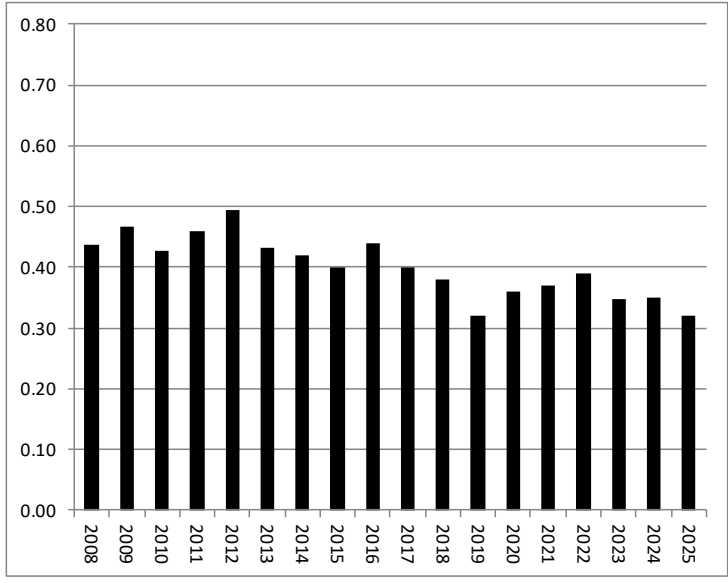
Harvest indices (i.e., antlered harvest, antlerless lic/deer), not PASAK model, used to monitor population trend

WMU 5C

DEER HEALTH: Fawn to Doe Ratio²

6-yr Trend Stable

Year	Total
2008	0.44
2009	0.47
2010	0.43
2011	0.46
2012	0.49
2013	0.43
2014	0.42
2015	0.40
2016	0.44
2017	0.40
2018	0.38
2019	0.32
2020	0.36
2021	0.37
2022	0.39
2023	0.35
2024	0.35
2025	0.32



FOREST HEALTH

NA

Forest data not considered in this developed WMU

DEER-HUMAN CONFLICTS

Citizen Survey Results Just Right

Year	% Too high	% Just right	% Too low
2011	30%	55%	9%
2019	33%	51%	8%
2023	28%	53%	14%

Antlerless Allocation

Objective: Reduce (CWD detected within 10 miles of WMU and Executive Office)

101,000

¹ - The number of antlerless licenses sold that it takes to harvest an antlerless deer. The number sold will differ from the allocation.
² - Harvest fawn to doe ratio is calculated as percent of fawns in the antlerless harvest.

2026-27 Pennsylvania Game Commission Antlerless Allocation Worksheet

WMU 5D

WMU Characteristics				
% Developed	% Forest	%Ag/Field	%Public	Area (sq mi)
61%	18%	11%	0%	1,327

Deer Harvest

Year	Antlered	Antlerless	Allocation	Lic/Deer ¹	Antlered Harvest Estimate
2005	1,460	4,166	20,000	4.5	
2006	1,315	4,074	20,000	4.7	
2007	977	5,185	20,000	3.8	
2008	1,343	4,533	22,000	4.7	
2009	1,130	3,911	22,000	5.2	
2010	1,144	3,721	22,000	5.1	
2011	1,156	3,827	22,000	4.7	
2012	1,325	3,766	19,000	4.7	
2013	1,589	4,483	18,000	4.0	
2014	1,317	3,788	18,000	4.7	
2015*	2,191	5,172	24,000	4.6	
2016	2,908	6,452	30,000	4.6	
2017	3,327	7,526	30,000	3.9	
2018	2,631	6,001	28,000	4.6	
2019	2,488	6,721	29,000	4.3	
2020	2,164	6,479	29,000	4.4	
2021	2,636	6,273	29,000	4.6	
2022	2,525	6,693	29,000	4.3	
2023	2,938	6,660	29,000	4.3	
2024	2,281	7,740	29,000	3.7	
2025	2,995	7,072	39,000	5.5	

* WMU Boundary Change

POST-HUNT Deer Population **6-yr Trend** **Stable**

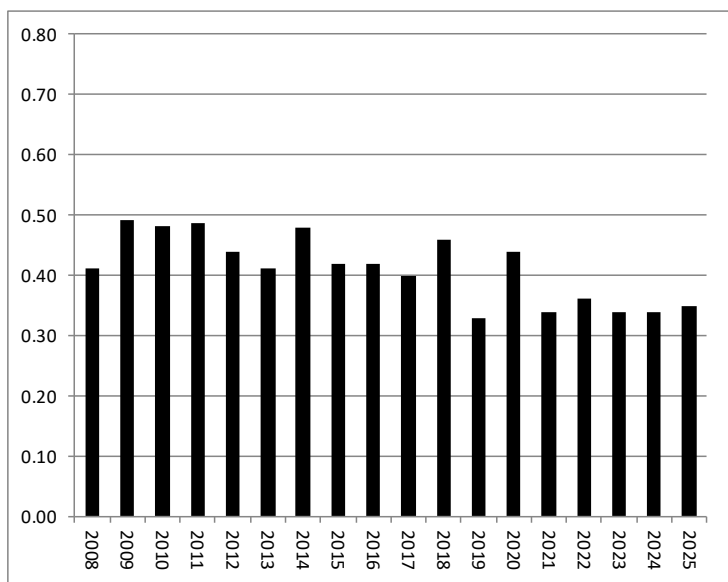
Harvest indices (i.e., antlered harvest, antlerless lic/deer), not PASAK model, used to monitor population trend

WMU 5D

DEER HEALTH: Fawn to Doe Ratio²

6-yr Trend Stable

Year	Total
2008	0.41
2009	0.49
2010	0.48
2011	0.49
2012	0.44
2013	0.41
2014	0.48
2015	0.42
2016	0.42
2017	0.40
2018	0.46
2019	0.33
2020	0.44
2021	0.34
2022	0.36
2023	0.34
2024	0.34
2025	0.35



FOREST HEALTH

NA

Forest data not considered in this developed WMU

DEER-HUMAN CONFLICTS

Citizen Survey Results Just Right

Year	% Too high	% Just right	% Too low
2011	25%	55%	18%
2019	33%	51%	8%
2023	26%	53%	13%

Antlerless Allocation

Objective: Reduce (Executive Office)

44,000

¹ - The number of antlerless licenses sold that it takes to harvest an antlerless deer. The number sold will differ from the allocation.
² - Harvest fawn to doe ratio is calculated as percent of fawns in the antlerless harvest.