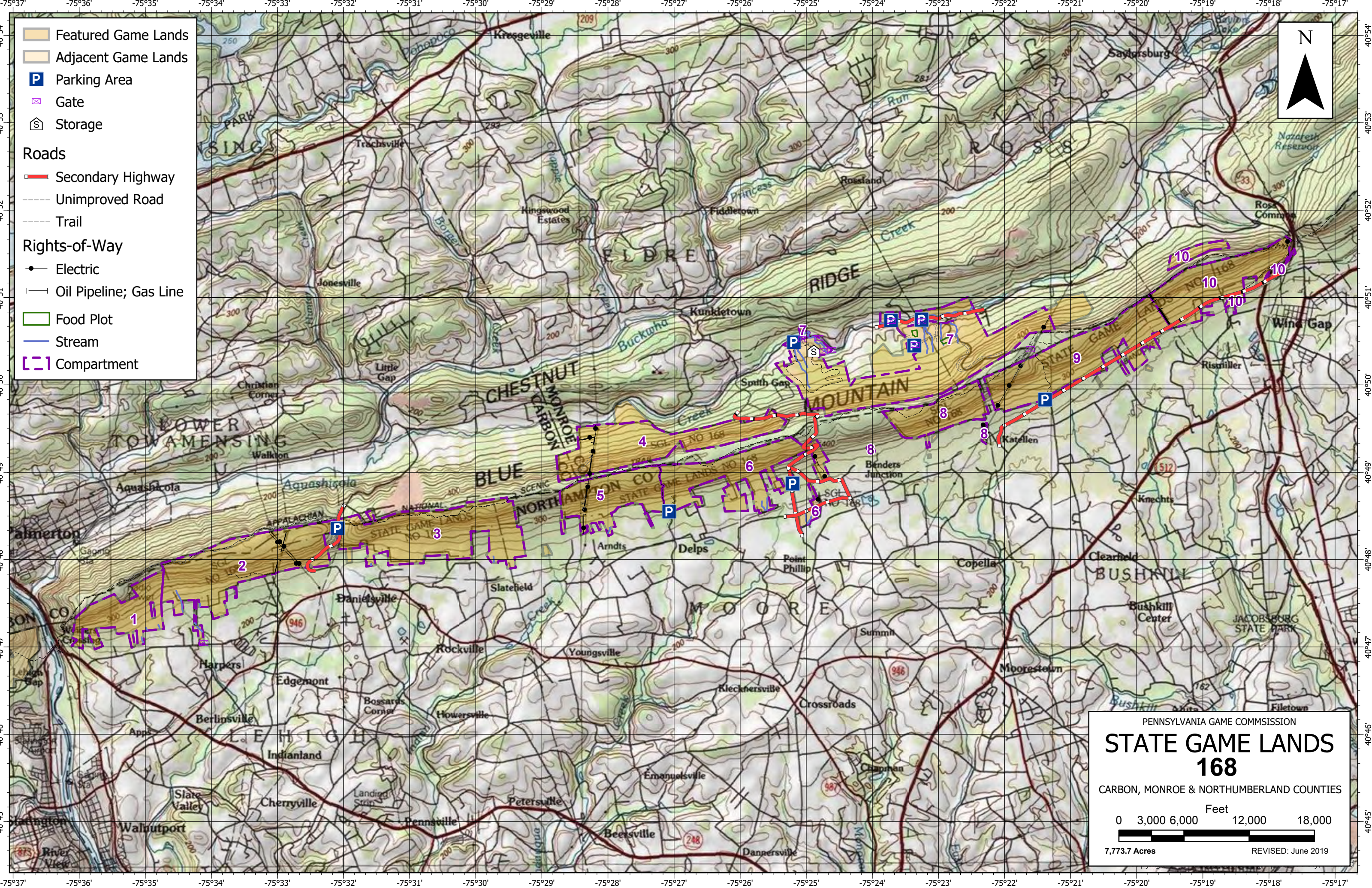


-  Featured Game Lands
  -  Adjacent Game Lands
  -  Parking Area
  -  Gate
  -  Storage
- Roads**
-  Secondary Highway
  -  Unimproved Road
  -  Trail
- Rights-of-Way**
-  Electric
  -  Oil Pipeline; Gas Line
-  Food Plot
-  Stream
-  Compartment



PENNSYLVANIA GAME COMMISSION

## STATE GAME LANDS 168

CARBON, MONROE & NORTHUMBERLAND COUNTIES

0 3,000 6,000 12,000 18,000  
Feet

7,773.7 Acres      REVISED: June 2019

# SPORTSMEN'S RECREATION MAP



## STATE GAME LANDS No. 168 CARBON, MONROE AND NORTHUMBERLAND COUNTIES

Each time a hunter buys a hunting license, the money he spends goes toward many facets of wildlife management. Since 1920, close to a million and a half acres of State Game Lands have been acquired with these funds. Each year nearly \$7,000,000 is spent to improve wildlife habitat. Habitat improvements enhance living conditions for non-game birds and mammals as well as those species which are hunted. Pennsylvania hunters willingly share these lands with the non-hunting public, and with few exceptions, State Game Lands are open for general use year round. Surveys indicate that hunting accounts for only thirty-five percent of game land usage. The remaining sixty-five percent is used by the general public for non-hunting purposes.

“Working Together for Wildlife” is a Game Commission program providing everyone an opportunity to help support wildlife management in the areas for endangered and non-game animals. Monies derived from the “Working Together for Wildlife” Program are being used in Pennsylvania to re-introduce the osprey, river otter, bald eagle, peregrine falcon and provide habitat for other birds and mammals indigenous to the Commonwealth. Construction placement of blue bird houses on State Game Lands provides needed homes for this beautiful songbird. Islands in the Susquehanna River have been set aside as propagations areas for non-game shore birds. Numerous other projects are planned on State Game Lands and other public properties which will also provide food and habitat for non-game wildlife.

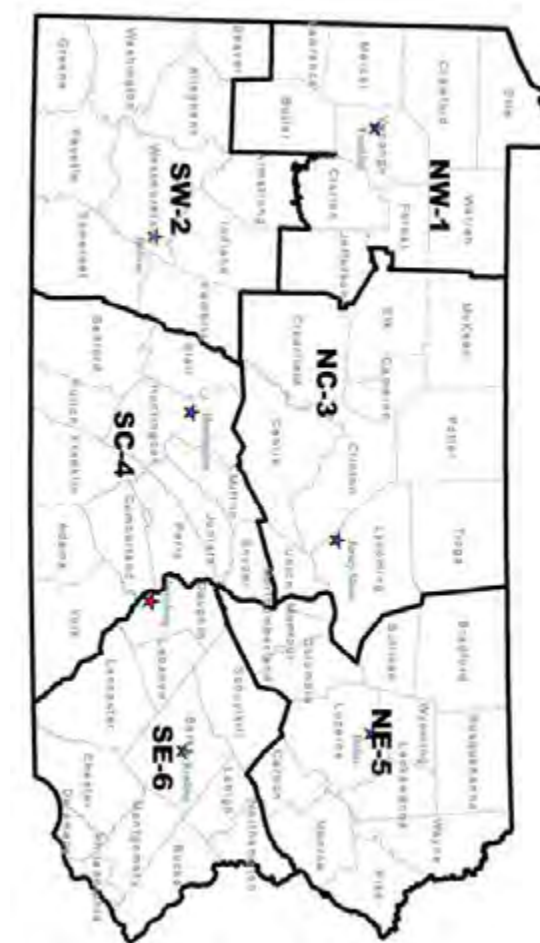
The future of Pennsylvania’s wildlife resources requires the concern, cooperation and financial support of everyone, hunters and non-hunters alike. “Working Together for Wildlife” is the answer. Send your contributions to “Working Together for Wildlife”, 2001 Elmerton Avenue, Harrisburg, Pennsylvania 17110-9797.

State Game Land (SGL) 168 is located in the Pennsylvania Game Commission's southeast region in East Penn and Lower Towamensing Townships in Carbon County, Eldred and Ross Townships in Monroe County and Lehigh, Moore, Bushkill and Plainfield Townships in Northampton County. The acreage for this game lands is approximately 7,773.7 acres. The property is entirely within Wildlife Management Unit 3D. SGL 168 is located approximately 15 miles north of Allentown.

SGL 168 is 94% forested with the remaining area is under special wildlife management and consists of herbaceous openings, open areas, parking lots, access roads and right-of-ways. The terrain of the game lands is predominantly long flat ridge top with steep to moderately steep side slopes typical of the Blue Mountain. Elevations range from a high of 1600' along the ridge top of the Blue Mountain to 700' along the lower slopes.

Deer are the predominate species that is hunted on SGL 168. Deer are hunted equally throughout the game lands. Turkey hunting is also a popular activity with spring hunting seeing more hunting pressure than fall. Bears are hunted on the game lands with five or so being harvested most years. There is some small game hunting with squirrels and grouse being the most popular quarry. Fur bearers are hunted on SGL 168, especially foxes and coyotes. There are also ample trapping opportunities, especially along the various access roads.

The Appalachian Trail runs through the center of SGL 168. Because of this, hiking is very popular on this game lands. SGL 168 is also popular with birders. Every fall birds of prey migrate along the ridge and birders gather at observation points along the ridge to observe the migration. During the spring migration when warblers are moving through birders can be found along Smith Gap Road. This dirt township road goes up steep portions of the ridge and allows eye level tree-top viewing.



- 1** NORTHWEST REGIONAL HEADQUARTERS  
1509 PITTSBURG RD, FRANKLIN, PA 16323  
814-432-3187
- 2** SOUTHWEST REGIONAL HEADQUARTERS  
4820 ROUTE 711, BOLLIVAR, PA 15923  
814-432-3188
- 3** NORTHCENTRAL REGIONAL HEADQUARTERS  
1566 S ROUTE 44 HWY, JERSEY SHORE, PA 17740  
724-238-9523
- 4** SOUTHCENTRAL REGIONAL HEADQUARTERS  
8627 WILLIAM PENN HWY, HUNTINGDON, PA 16652  
724-238-9524
- 5** NORTHEAST REGIONAL HEADQUARTERS  
3917 MEMORIAL HWY, DALLAS, PA 18612  
570-398-4744
- 6** SOUTHEAST REGIONAL HEADQUARTERS  
253 SNYDER RD, READING, PA 19605  
570-398-4745

FOR FURTHER INFORMATION  
CONTACT THE FOLLOWING:

COMMONWEALTH OF PENNSYLVANIA  
PENNSYLVANIA GAME COMMISSION

- 814-643-1831
- 814-643-1835
- 570-675-1143
- 570-675-1144
- 610-926-3136
- 610-926-3137