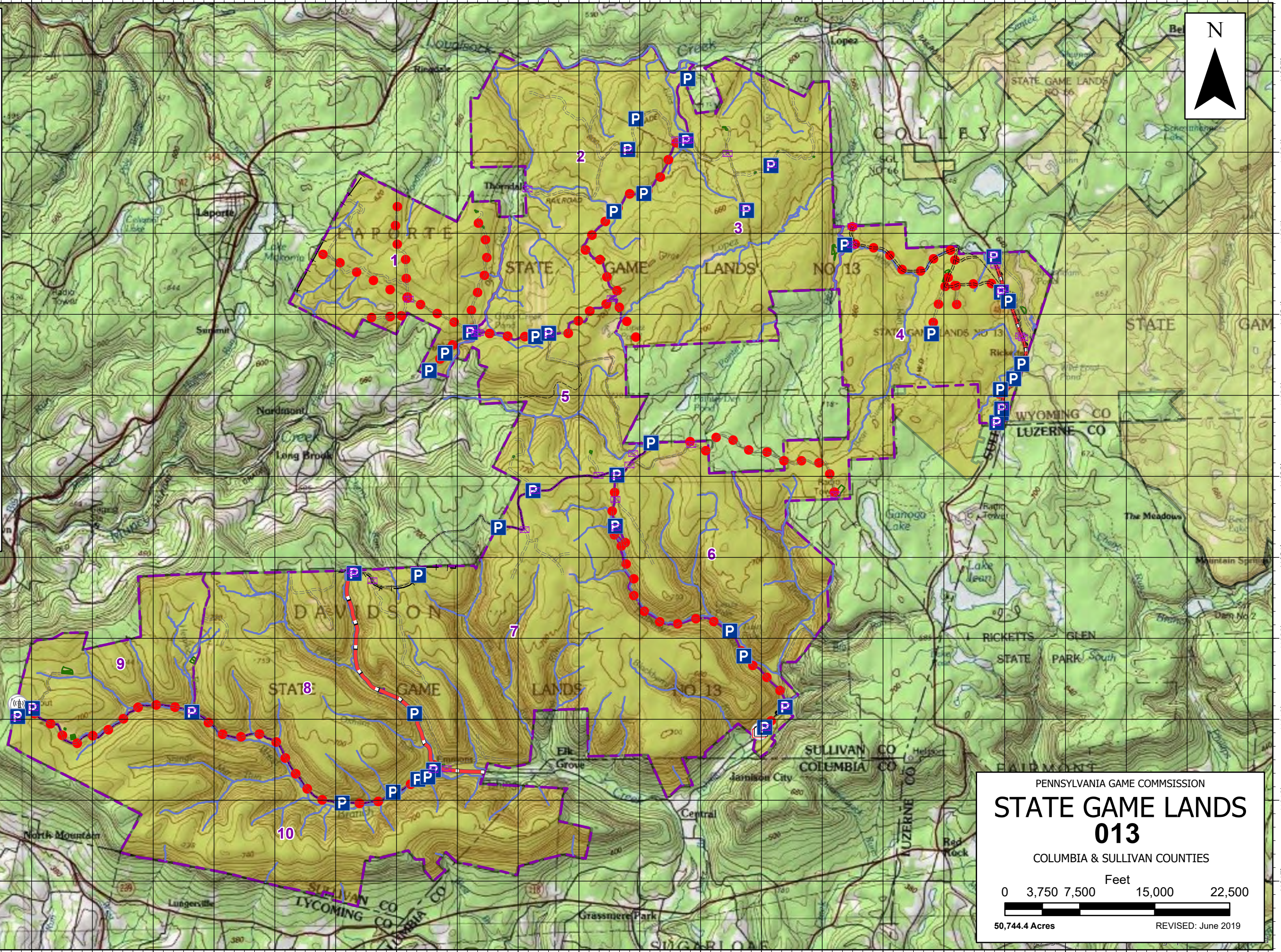


- Featured Game Lands
- Adjacent Game Lands
- Parking Area
- Gate
- Food & Cover Crew HQ
- Storage
- Railroad**
- Access Road
- Trail
- Roads**
- Secondary Highway
- Unimproved Road
- Tower Site
- Trail
- Special Trails
- Rights-of-Way**
- Electric
- Oil Pipeline; Gas Line
- Food Plot
- Stream
- Compartment



PENNSYLVANIA GAME COMMISSION

# STATE GAME LANDS 013

COLUMBIA & SULLIVAN COUNTIES

0 3,750 7,500 15,000 22,500  
Feet

50,744.4 Acres      REVISED: June 2019



# SPORTSMEN'S RECREATION MAP



## STATE GAME LANDS No. 013 COLUMBIA & SULLIVAN COUNTIES

Each time a hunter buys a hunting license, the money he spends goes toward many facets of wildlife management. Since 1920, close to a million and a half acres of State Game Lands have been acquired with these funds. Each year nearly \$7,000,000 is spent to improve wildlife habitat. Habitat improvements enhance living conditions for non-game birds and mammals as well as those species which are hunted. Pennsylvania hunters willingly share these lands with the non-hunting public, and with few exceptions, State Game Lands are open for general use year round. Surveys indicate that hunting accounts for only thirty-five percent of game land usage. The remaining sixty-five percent is used by the general public for non-hunting purposes.

“Working Together for Wildlife” is a Game Commission program providing everyone an opportunity to help support wildlife management in the areas for endangered and non-game animals. Monies derived from the “Working Together for Wildlife” Program are being used in Pennsylvania to re-introduce the osprey, river otter, bald eagle, peregrine falcon and provide habitat for other birds and mammals indigenous to the Commonwealth. Construction placement of blue bird houses on State Game Lands provides needed homes for this beautiful songbird. Islands in the Susquehanna River have been set aside as propagations areas for non-game shore birds. Numerous other projects are planned on State Game Lands and other public properties which will also provide food and habitat for non-game wildlife.

The future of Pennsylvania’s wildlife resources requires the concern, cooperation and financial support of everyone, hunters and non-hunters alike. “Working Together for Wildlife” is the answer. Send your contributions to “Working Together for Wildlife”, 2001 Elmerton Avenue, Harrisburg, Pennsylvania 17110-9797.

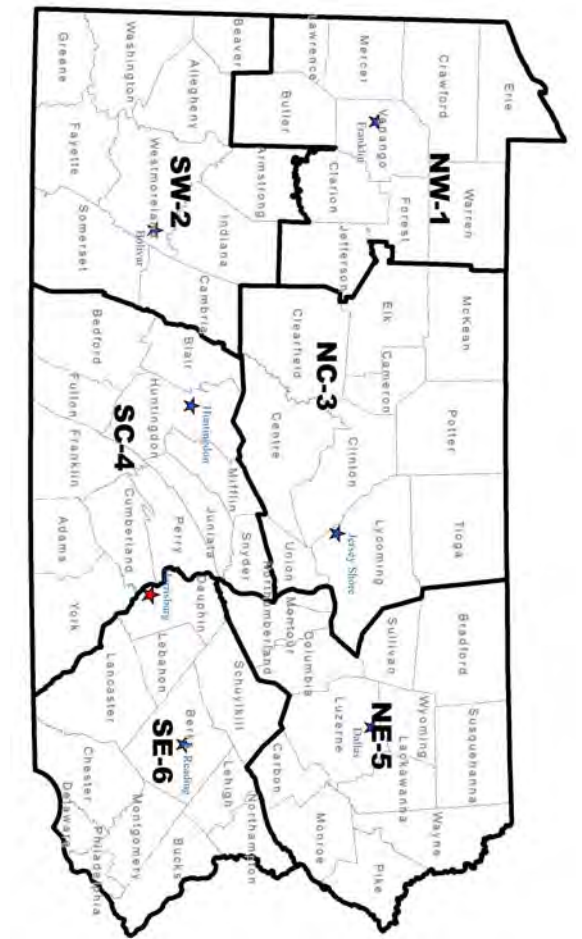
State Game Land 13 (SGL 13) consists of 50,744.42 acres. Located in the Pennsylvania Game Commission’s Northeast Region, covering parts of Sullivan and Columbia Counties it is the largest state game lands in the state.

Public access to SGL 13 is provided from State Route 118 to the south, State Route 220 to the west, and State Route 487 which runs through the eastern side of SGL 13. A variety of other state and township roads run through or along SGL 13. There are three disabled/ATV accessible Roads including Thorndale, Dutchman Swamp roads and Hemlock Run Road totaling approximately 6 miles combined. There are 35 parking areas that average approximately 1/10 acre in size. These lots are dirt or grass and range from fair to good condition. Parking areas are maintained annually by food and cover personnel.

The terrain is characterized by broad to narrow, rounded to relatively flat, elongate uplands separated in most places from the adjacent Glaciated Low Plateau Section by a steep-sloped, well defined escarpment. The Loyalsock and the East and West branch of Fishing Creek along with a number of named and unnamed tributaries can be found draining the game lands to the Susquehanna River Watershed.

State Game Land 13 is entirely within Wildlife Management Unit 3B. The principal species hunted on this Game Lands are white-tailed deer, black bear, and eastern wild turkey. Small Game opportunities exist for ruffed grouse, gray squirrel, waterfowl, American woodcock, and snowshoe hare. Furbearers also provide trapping opportunities for the sportsman with beaver, raccoon, mink, muskrat, gray fox, coyote and bobcat available. The remoteness, size and location of this game lands gives sportsmen an opportunity to hunt and trap with having little or no human contact.

Other activities that occur on this game lands including hiking, bird watching, cross-country skiing, mountain biking and horseback riding. There is also approximately 13 miles of snowmobile trail that access other state and private properties creating a large trail system throughout SGL 13.



1	<b>NORTHWEST REGIONAL HEADQUARTERS</b> 1509 PITTSBURG RD, FRANKLIN, PA 16323	814-432-3187 814-432-3188
2	<b>SOUTHWEST REGIONAL HEADQUARTERS</b> 4820 ROUTE 711, BOLIVAR, PA 15923	724-238-9523 724-238-9524
3	<b>NORTHCENTRAL REGIONAL HEADQUARTERS</b> 1566 S ROUTE 44 HWY, JERSEY SHORE, PA 17740	570-398-4744 570-398-4745
4	<b>SOUTHCENTRAL REGIONAL HEADQUARTERS</b> 8627 WILLIAM PENN HWY, HUNTINGDON, PA 16652	814-643-1831 814-643-1835
5	<b>NORTHEAST REGIONAL HEADQUARTERS</b> 3917 MEMORIAL HWY, DALLAS, PA 18612	570-675-1143 570-675-1144
6	<b>SOUTHEAST REGIONAL HEADQUARTERS</b> 253 SNYDER RD, READING, PA 19605	610-926-3136 610-926-3137

FOR FURTHER INFORMATION  
CONTACT THE FOLLOWING:

COMMONWEALTH OF PENNSYLVANIA  
PENNSYLVANIA GAME COMMISSION