

PA 36 Woodbury Pike

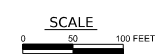
PA 36 Woodbury Pike

Pink box shows limits of improvement to the vertical geometry (dip)

- LEGEND**
- PROPOSED PAVEMENT
 - PROPOSED SHOULDER
 - PROPOSED PAINTED MEDIAN
 - PROPOSED CUT LINE
 - PROPOSED FILL LINE



PRELIMINARY



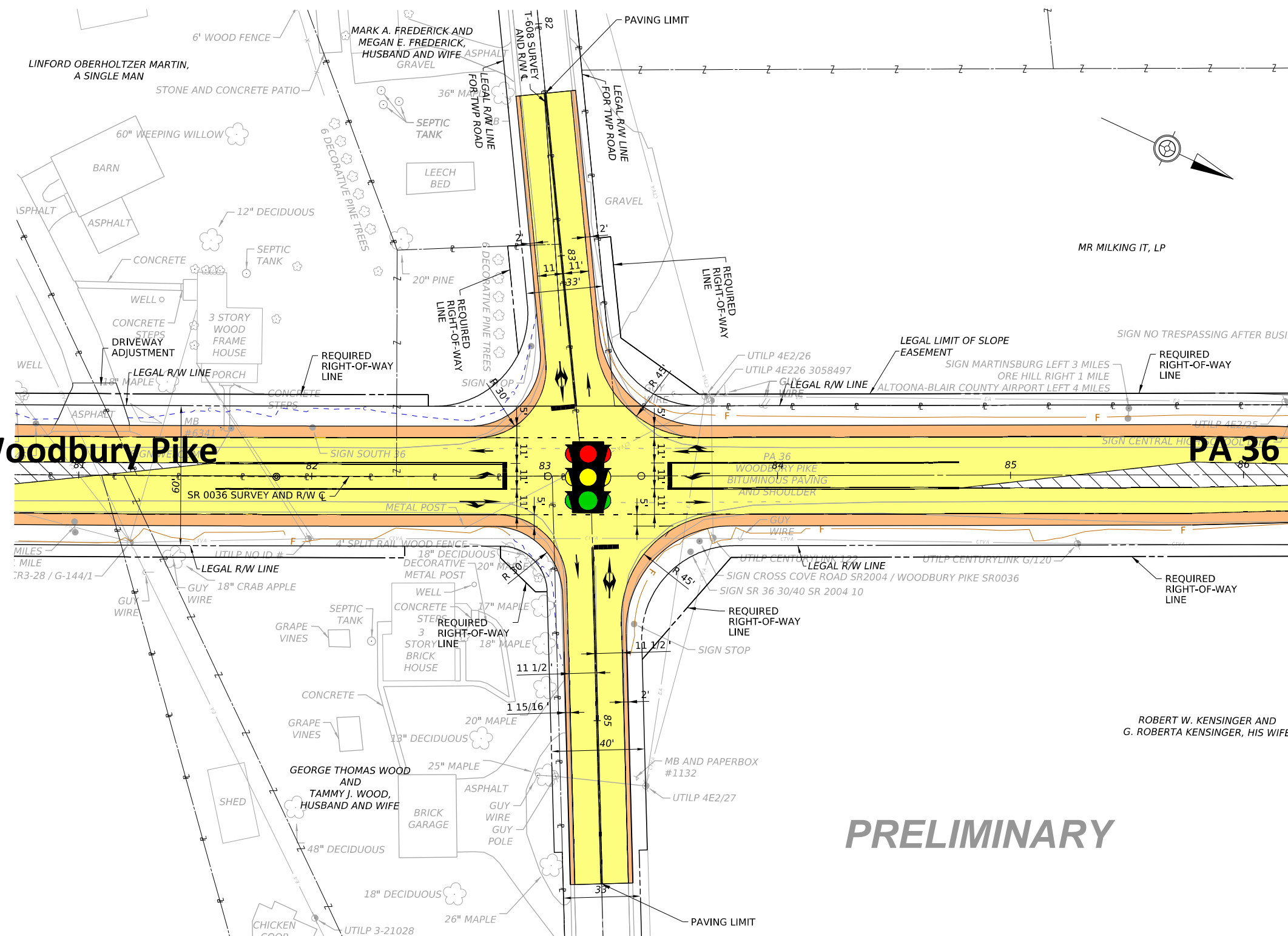
**SR 0036 - SR 2004 INTERSECTION IMPROVEMENT
ALTERNATIVE 1
SIGNALIZED**



FILE NAME: 073006460_01_1_Signals.dwg

PA 36 Woodbury Pike

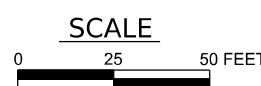
PA 36 Woodbury Pike



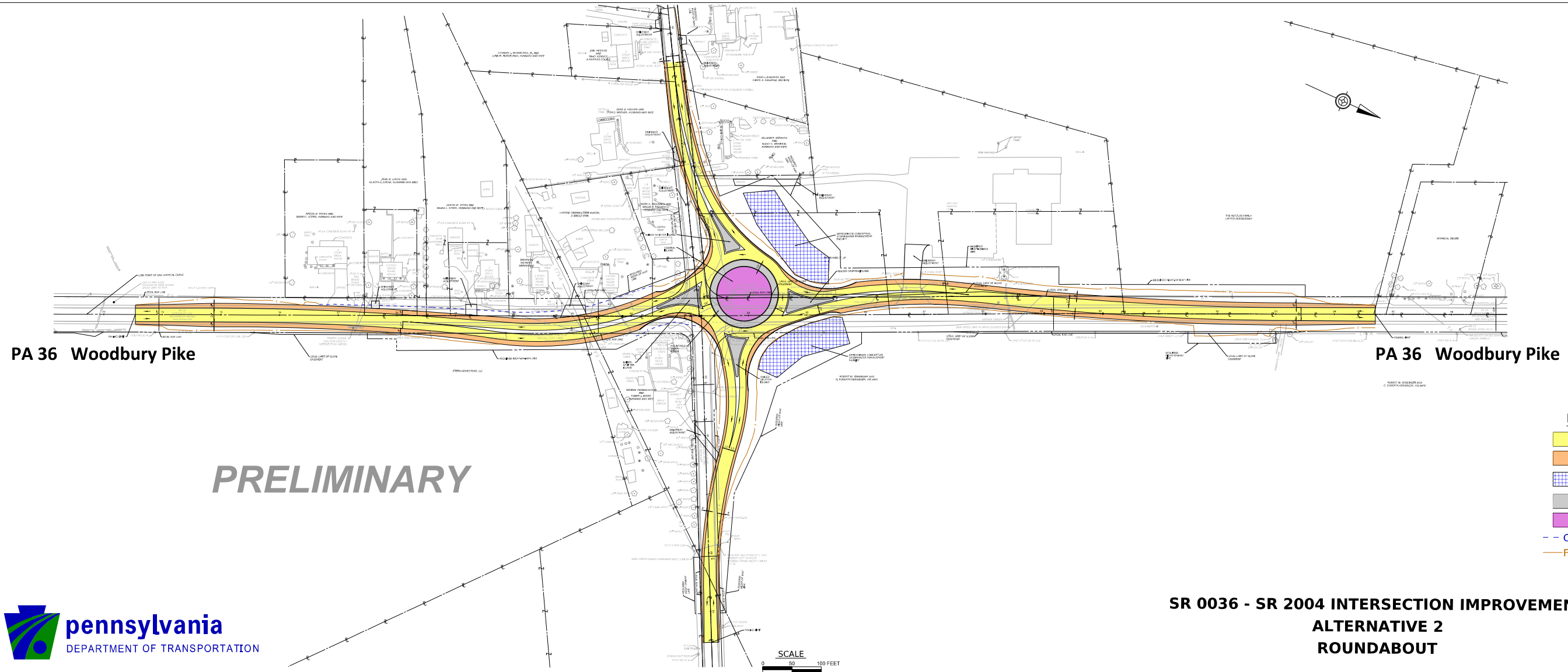
PRELIMINARY

- LEGEND**
- PROPOSED PAVEMENT
 - PROPOSED SHOULDER
 - PROPOSED PAINTED MEDIAN
 - PROPOSED CUT LINE
 - PROPOSED FILL LINE

SR 0036 - SR 2004 INTERSECTION IMPROVEMENT
ALTERNATIVE 1
SIGNALIZED



FILE NAME: 073006465_Alt 1 Signal_L50.dgn



- LEGEND**
- PROPOSED PAVEMENT
 - PROPOSED SHOULDER
 - PROPOSED STORMWATER MANAGEMENT FACILITY (APPROXIMATE LOCATION)
 - PROPOSED RAISED ISLAND
 - PROPOSED CENTRAL ISLAND
 - PROPOSED CUT LINE
 - PROPOSED FILL LINE

PA 36 Woodbury Pike

PA 36 Woodbury Pike

PRELIMINARY

**SR 0036 - SR 2004 INTERSECTION IMPROVEMENT
ALTERNATIVE 2
ROUNDBOUT**

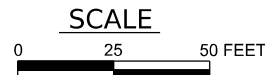


FILE NAME: 073004616_01_2 Roundabout_2.dgn

PA 36 Woodbury Pike

PA 36 Woodbury Pike

PRELIMINARY



SR 0036 - SR 2004
INTERSECTION IMPROVEMENT
ALTERNATIVE 2
ROUNDBOUT

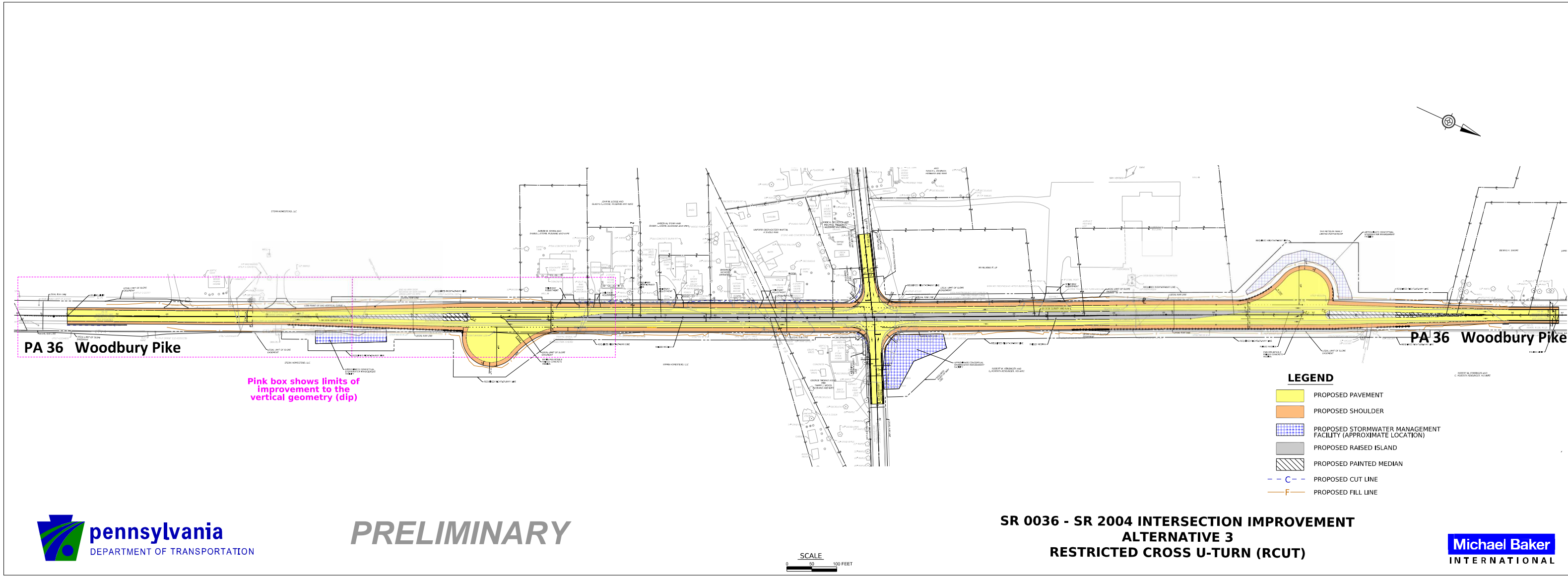
ROBERT W. KENSINGER AND
G. ROBERTA KENSINGER, HIS WIFE

LEGEND

- PROPOSED PAVEMENT
- PROPOSED SHOULDER
- PROPOSED STORMWATER MANAGEMENT FACILITY (APPROXIMATE LOCATION)
- PROPOSED RAISED ISLAND
- PROPOSED CENTRAL ISLAND
- PROPOSED CUT LINE
- PROPOSED FILL LINE



FILE NAME: 073006465_Alt 2 Roundabout_50.dgn

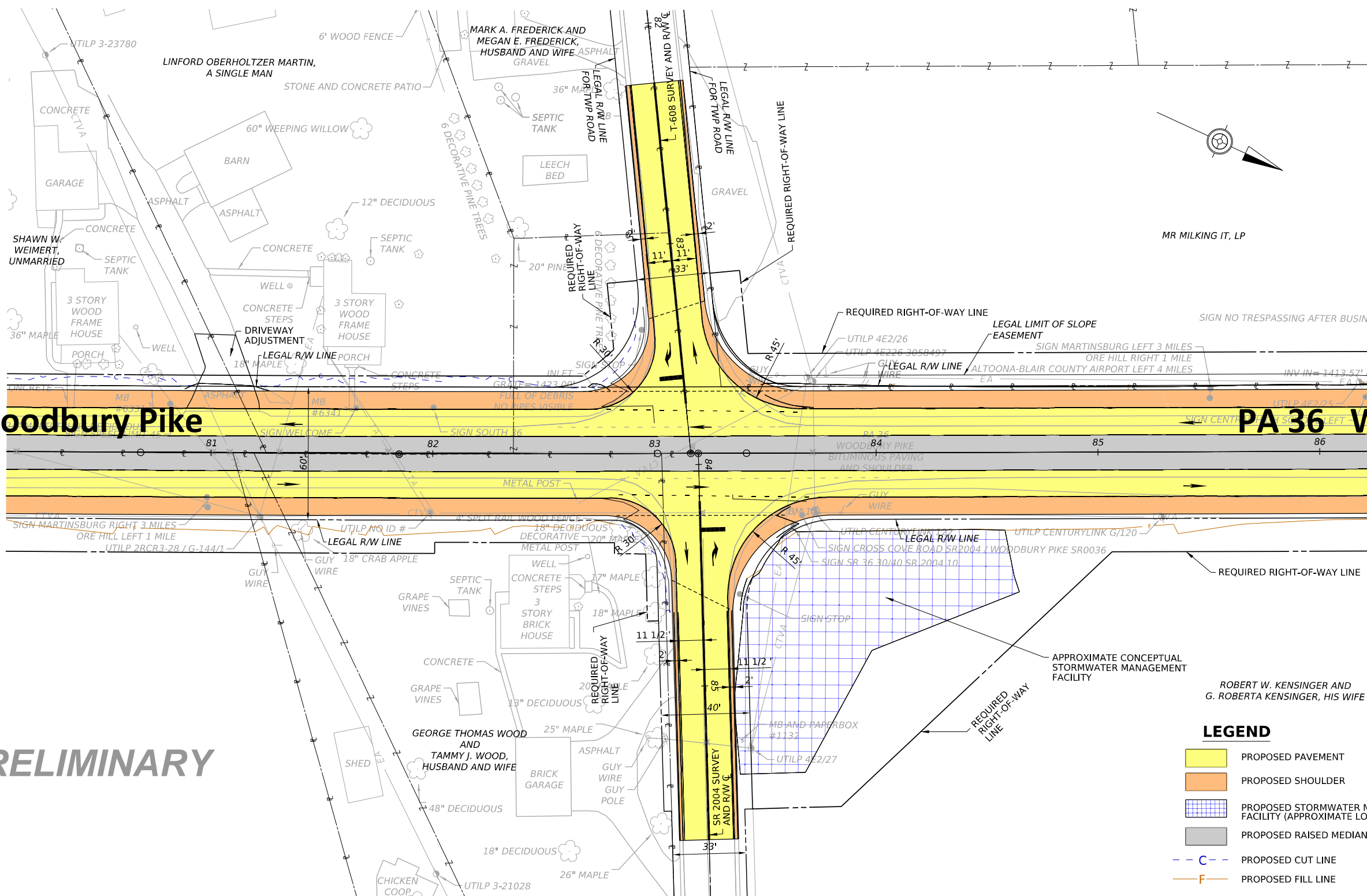


FILE NAME: 073004616_03 RCUT_03.dgn

PA 36 Woodbury Pike

PA 36 Woodbury Pike

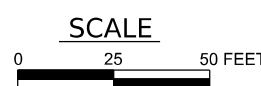
PRELIMINARY



- LEGEND**
- PROPOSED PAVEMENT
 - PROPOSED SHOULDER
 - PROPOSED STORMWATER MANAGEMENT FACILITY (APPROXIMATE LOCATION)
 - PROPOSED RAISED MEDIAN
 - PROPOSED CUT LINE
 - PROPOSED FILL LINE



SR 0036 - SR 2004 INTERSECTION IMPROVEMENT
 ALTERNATIVE 3
 RESTRICTED CROSS U-TURN (RCUT)



FILE NAME: 073006465_Alt 3 RCUT_50.dgn