

PENNDOT DISTRICT 9-0 FULTON COUNTY

VINCE GREENLAND, P.E.
DISTRICT EXECUTIVE



Pennsylvania
Department of Transportation

AGENDA

Vince Greenland, District Executive

- Greeting and Introductions/Agenda Summary
- Transportation Update

Dave Wolfhope, Assistant Construction Engineer

- Construction Project Update
- Overview for 2025 Construction Season

Edward Mickey, Assistant County Maintenance Manager

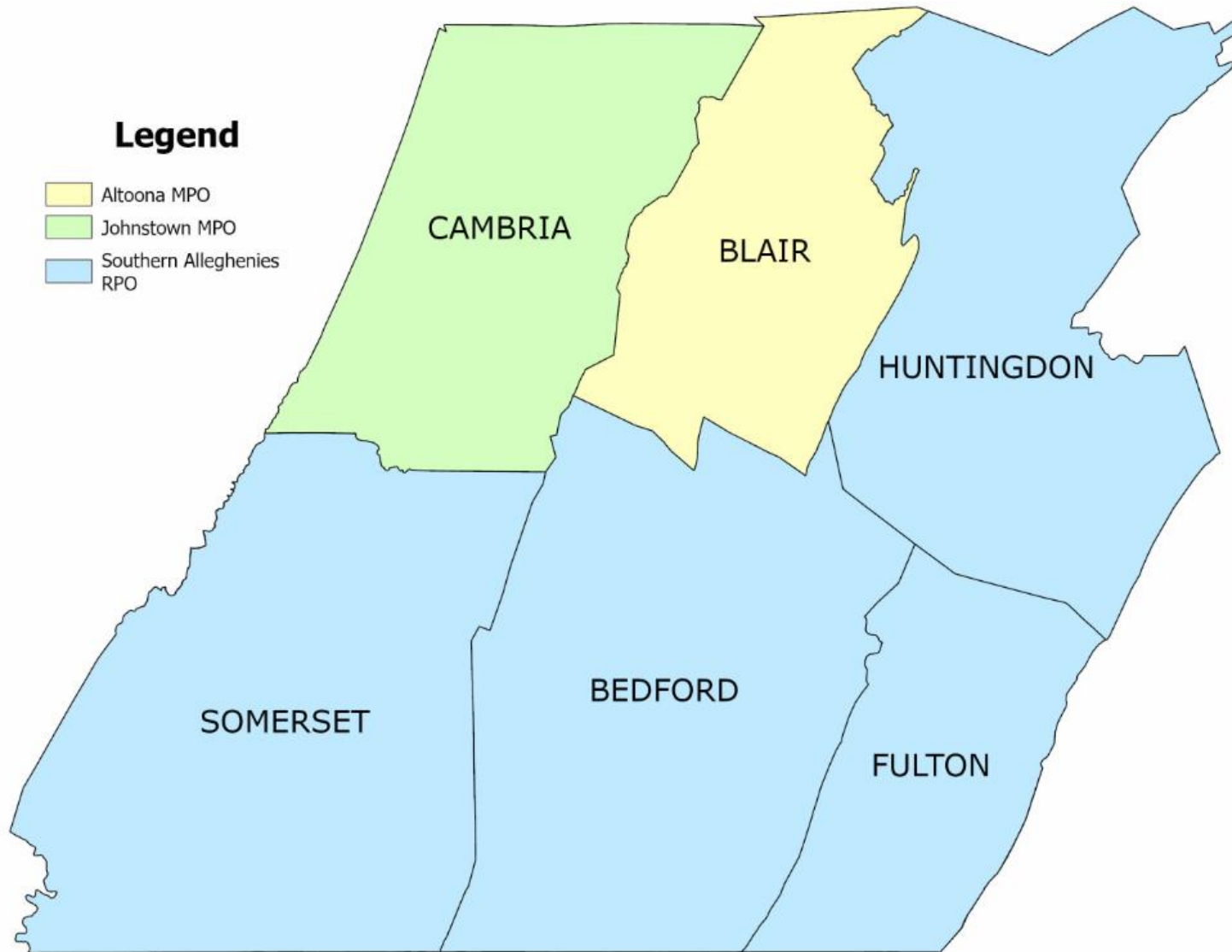
- Winter Wrap-Up
- County Funded Improvements

James Pruss, Assistant District Executive, Design

- Multimodal Transportation Fund
- Future Projects

Question and Answer Session

DISTRICT 9: OVERVIEW



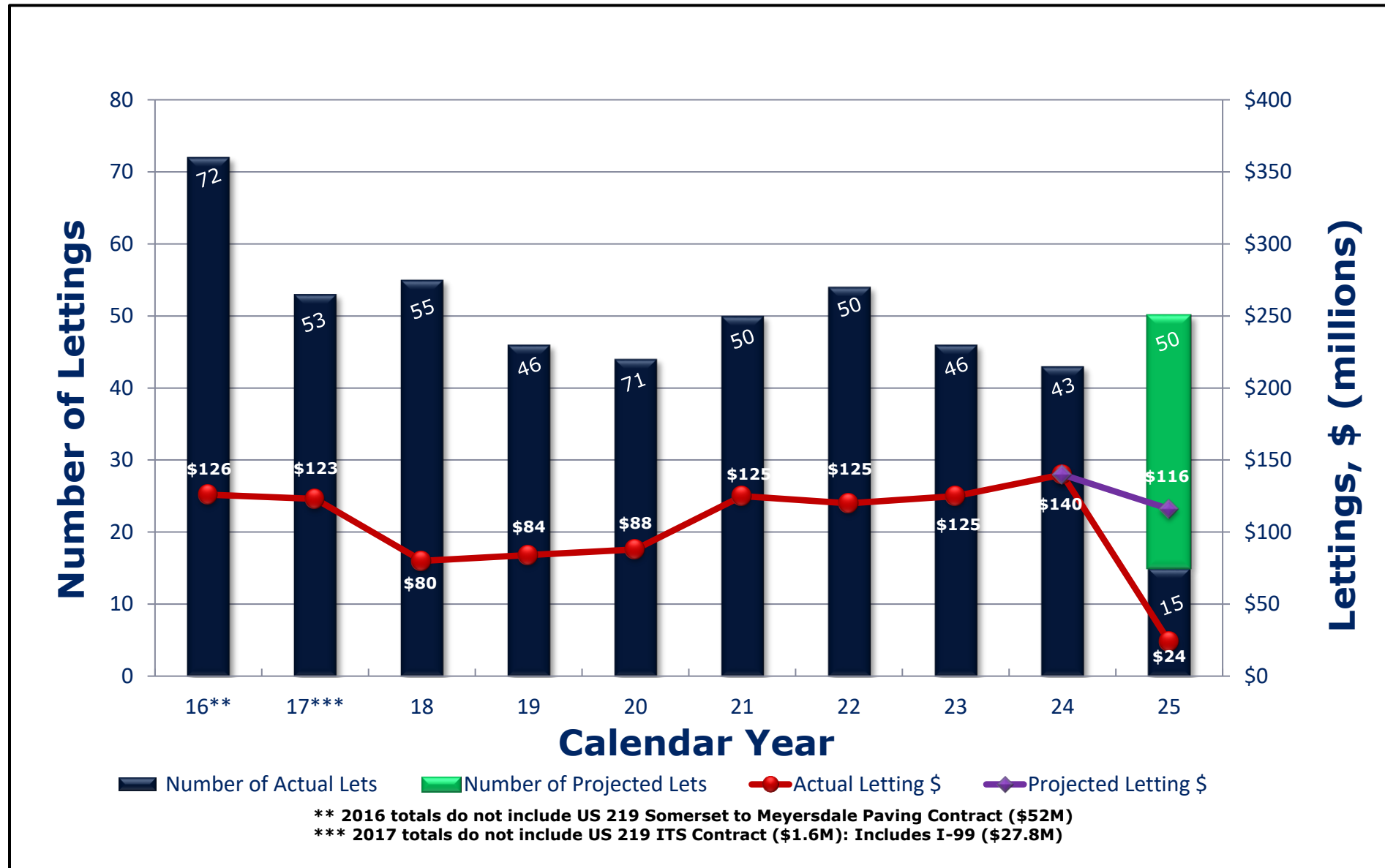
- 6 Counties
- 883 Employees
- Bridges
 - 2,100 State Bridges
 - 2.0% Poor Deck Area
 - 465 Local Bridges
 - 20.9% Poor Deck Area
- 4,004 Miles of Roadway
 - 15.4% Poor IRI

2025 Program Overview & Challenges

TIP FINANCIAL GUIDANCE COMPARISON

	Act 89				BIL		2023-2025 TIP Difference	
Planning Region	2015 TIP (000's)	2017 TIP (000's)	2019 TIP (000's)	2021 TIP (000's)	2023 TIP (000's)	2025 TIP (000's)	\$ (000's)	%
CCMPO	\$ 86,845	\$ 67,469	\$ 69,084	\$ 66,619	\$ 98,180	\$ 102,069	\$ 3,889	4.0%
Blair MPO	\$ 50,559	\$ 41,496	\$ 44,415	\$ 42,682	\$ 69,059	\$ 72,008	\$ 2,949	4.3%
S Alleghenies RPO	\$ 172,569	\$ 156,280	\$ 147,570	\$ 134,433	\$ 202,597	\$ 220,083	\$ 17,486	8.6%
District 9-0	\$ 309,973	\$ 265,245	\$ 261,069	\$ 243,734	\$ 369,836	\$ 394,160	\$ 24,324	6.6%

DISTRICT 9-0 PROJECT LETTINGS



ASSET CONDITION

State Route System

	Statewide	Districtwide	Southern Alleghenies	Cambria County	Blair County
Poor IRI, miles (%)	10,005 (23.3%)	613 (15.4%)	466 (17.3%)	111 (15.2%)	35 (6.5%)
Poor Bridge, # (%)	2,302 (9.1%)	121 (5.8%)	109 (7.6%)	7 (2.1%)	5 (1.5%)

Additional Statistics

Bridges (Total Brdgs / Average Age)

- Districtwide: 2,100 / 50 yrs.
- Southern Alleghenies: 1,444 / 52 yrs.
- Cambria County: 332 / 47 yrs.
- Blair County: 324 / 45 yrs.

Roads (Miles / Ave Built Yr. / Ave Resurf Yr.)

- Districtwide: 4,004 / 1952 / 2014
- Southern Alleghenies: 2,724 / 1952 / 2014
- Cambria County: 740 / 1951 / 2014
- Blair County: 540 / 1954 / 2015

*The 2 oldest state bridges in District 9 are masonry stone arches that carry Route 53 in Cambria County. Both were built in 1832 and rehabbed in 2019 and 2020. Neither are in Poor condition.

Bridge Challenges

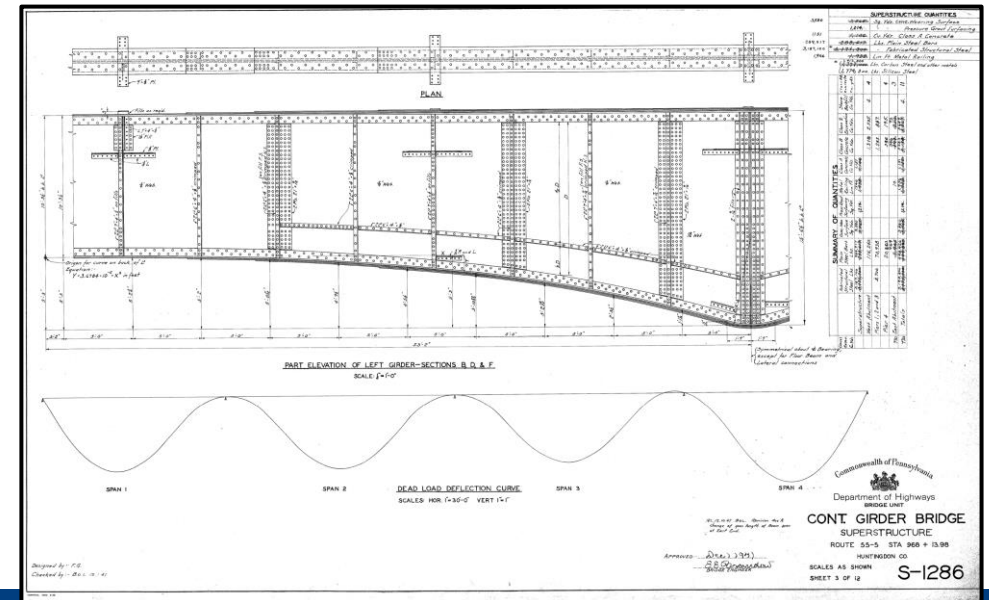
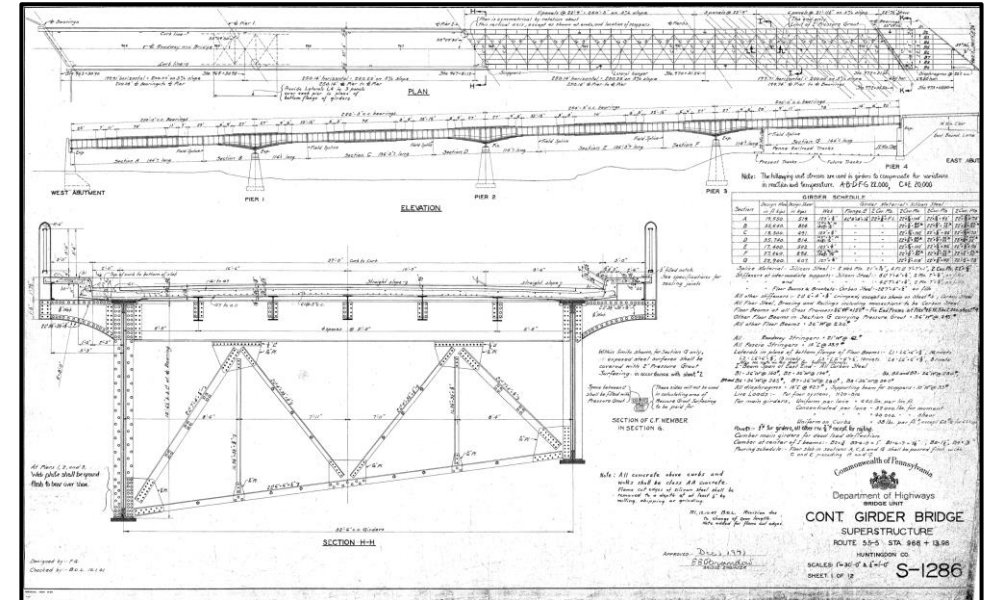
US 22 OVER JUNIATA RIVER



- Features:
 - Over SR 1010 (Penn St), Railroad, Juniata River
 - Length: 983'
 - Spans - 5
 - Width: 47'
 - Traffic Volume: 9,540 vehicles per day

U.S. 22 MILLION DOLLAR BRIDGE

- Original Construction:
 - Constructed: 1949
 - Cost: Around \$1 million
 - 13 Sheet Structure Plan
 - Life Expectancy: Believed to be 75 yrs.
- Maintenance and Rehabilitation Work
 - 2007 – Rehabilitation Project: Complete Deck & Partial Superstructure Replacement
 - Construction Cost: \$11.2 million
 - 57 Sheet Structure Plan



U.S. 22 MILLION DOLLAR BRIDGE

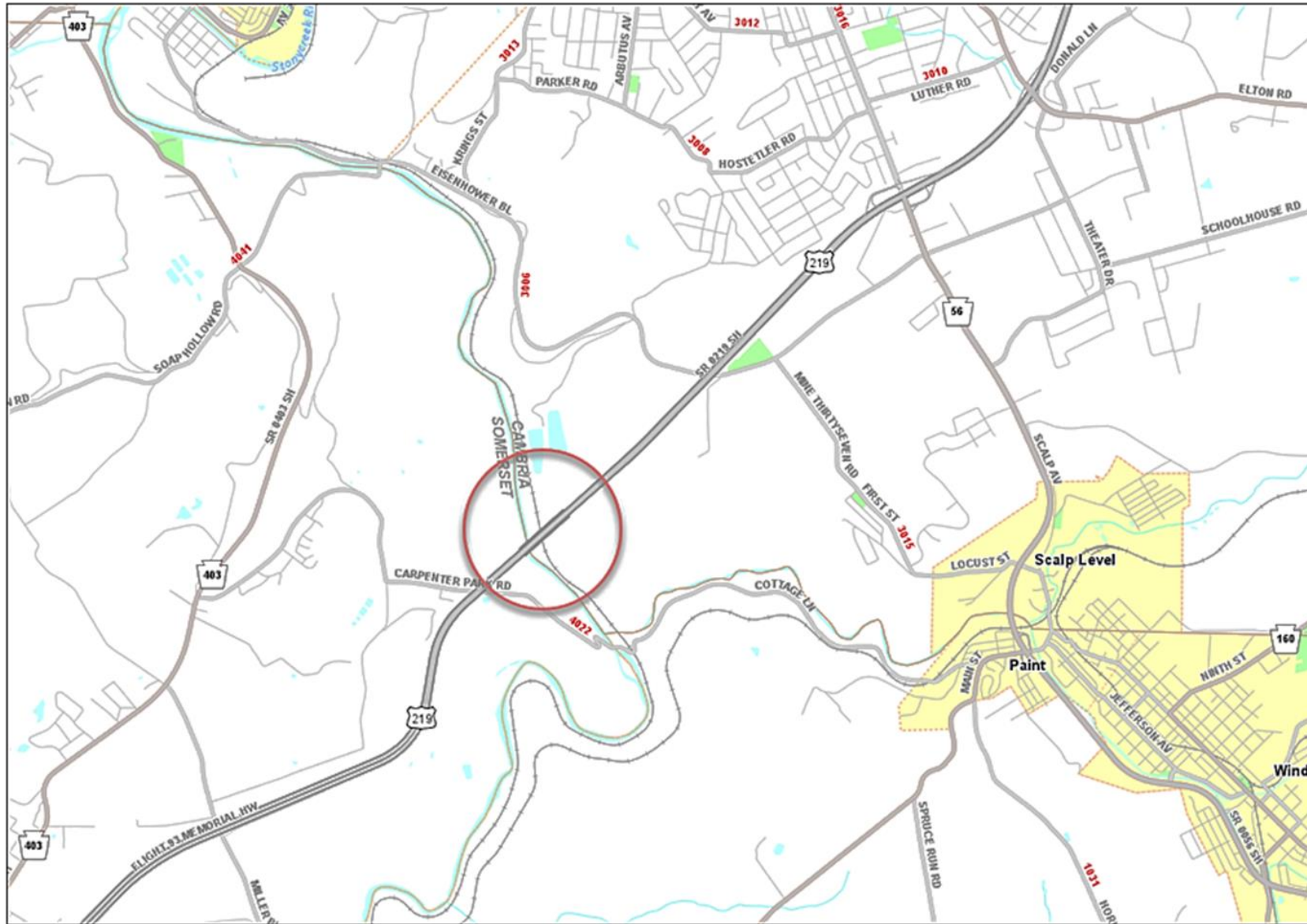
- Replacement Considerations:
 - 75-year Life Expectancy for Original Build ~ 2024
 - Replacement Cost:
 - Pre-Construction Cost: \$10 million
 - Construction Cost: \$35 million
 - Total Cost: \$45 million

MCNALLY BRIDGE STUDY



- Study of bridge on U.S. 219 over CSX Railroad and Stonycreek River in Conemaugh Township, Somerset County and Richland Township, Cambria County
- **Estimated Cost:** \$350,000
- **Estimated Completion:** 2025

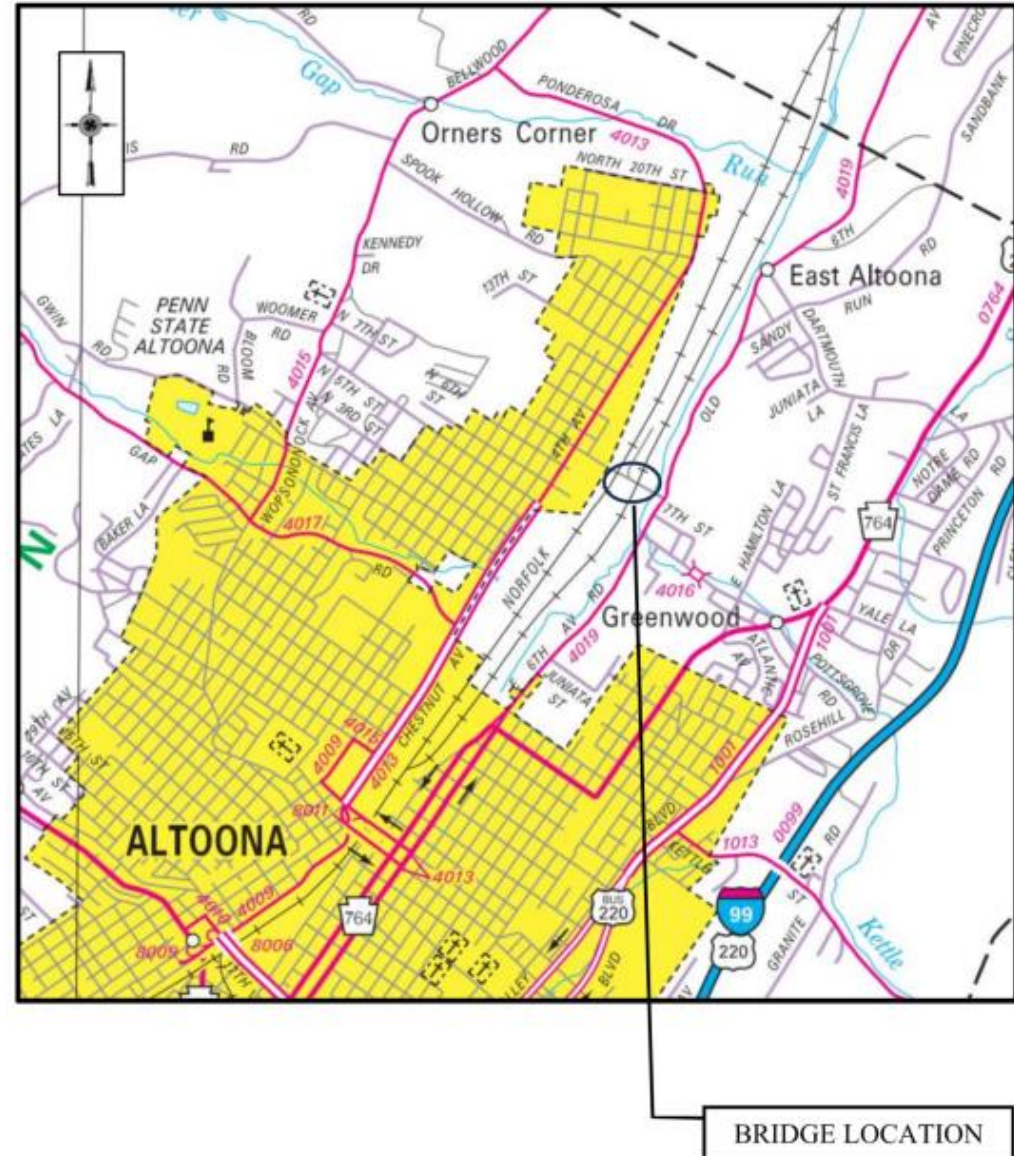
MCNALLY BRIDGE STUDY



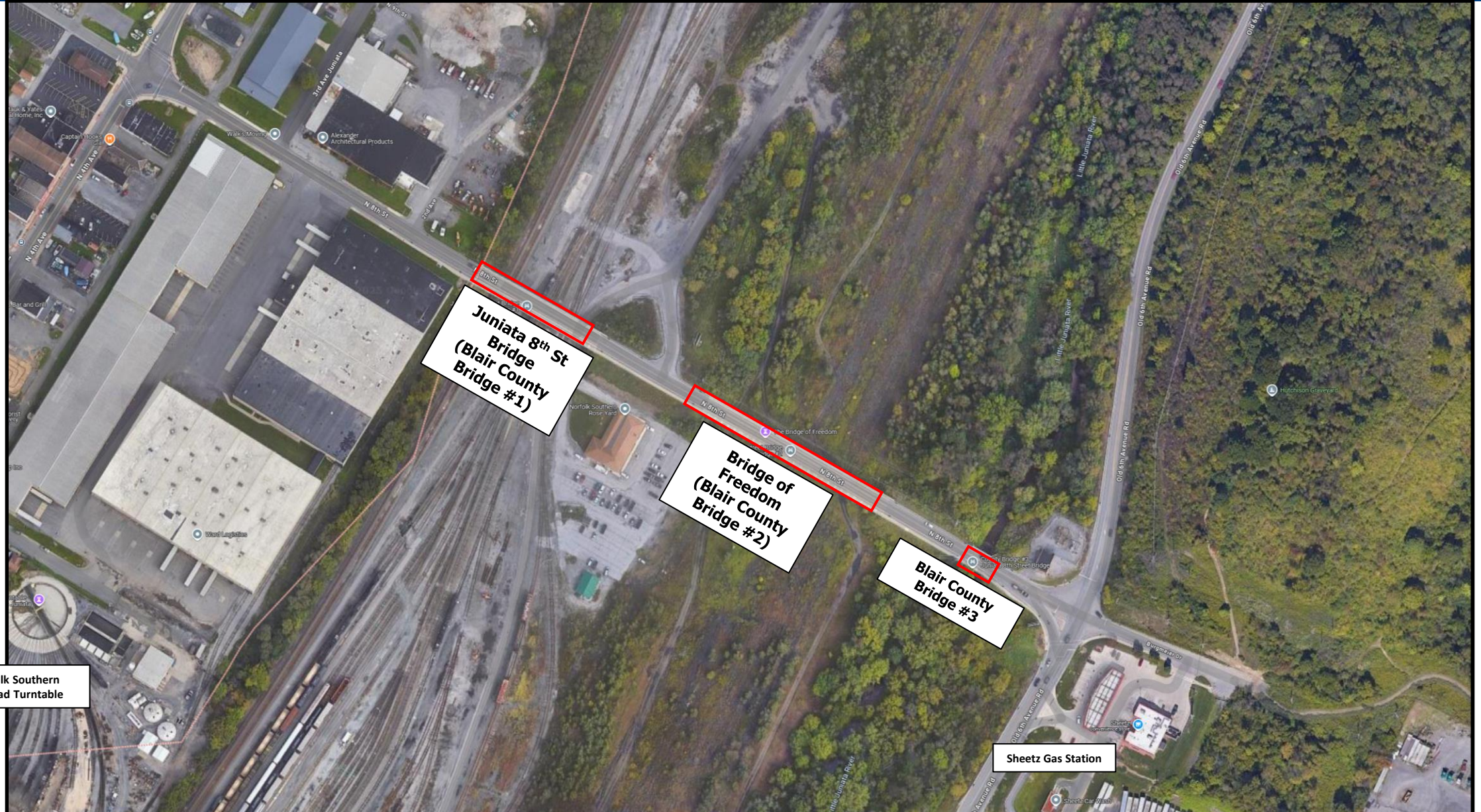
BLAIR COUNTY 8TH STREET BRIDGE



- **Location:** Carrying 8th Street Over Norfolk Southern RR in Juniata
- **Current Status:** Load Posting of 29/33 Tons with June 2024 Inspection
- Full/Superstructure Replacement
- **Anticipated Cost :** TBD
- **Construction Year:** Unfunded

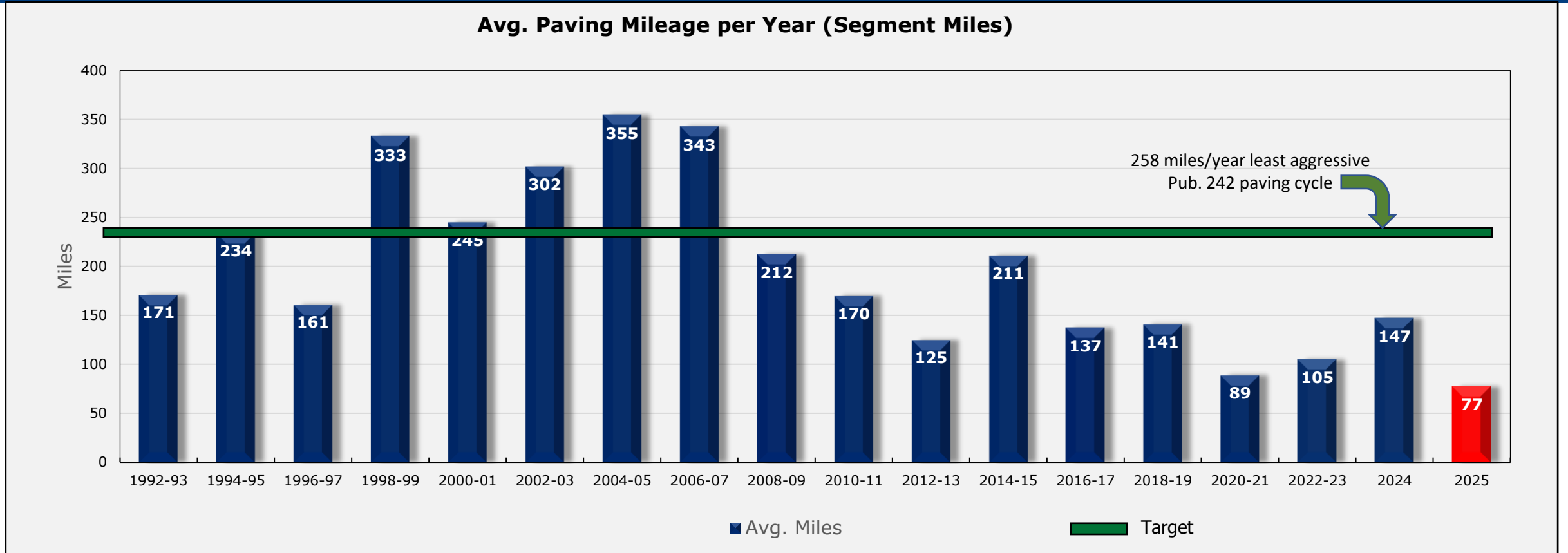


BLAIR COUNTY 8TH STREET BRIDGE



Roadway Challenges

ASSET MANAGEMENT UPDATE & FUTURE PLANS - ROADWAY



CHALLENGES

- Maintenance funds have traditionally funded much of our asphalt paving
- Higher costs for contracted asphalt paving
- Balancing priorities for drainage, guiderail, ADA, tree trimming, sign updates, safety, geotechnical while still paving as much mileage as practical
 - Early 2000's maintenance funded resurfacing ~ 90% of funds went directly into paving
 - Current maintenance funded resurfacing ~ 60-65% of funds going to paving (35-40% for other priority work)

ROUTE 655 – ROUTE 4014 TO ROUTE 4008



ROUTE 655 – ROUTE 4014 TO ROUTE 4008



- **Project Type:** Resurfacing
- **Location:** Route 655 from Pitt Street (Route 4014) to Dublin Mills Road (Route 4008) in Taylor Township, Fulton County
- **Construction Estimate:** \$1.0 - \$5.0 Million (**UNFUNDED**)
- **Last Resurfaced:** 1999
- **ADT:** 2,191

Safety

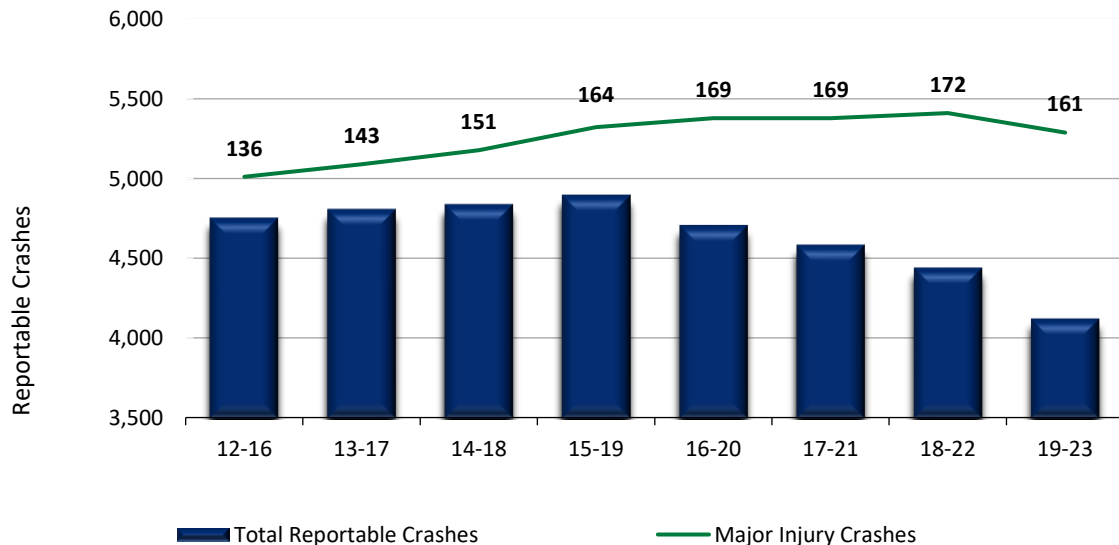
SAFETY



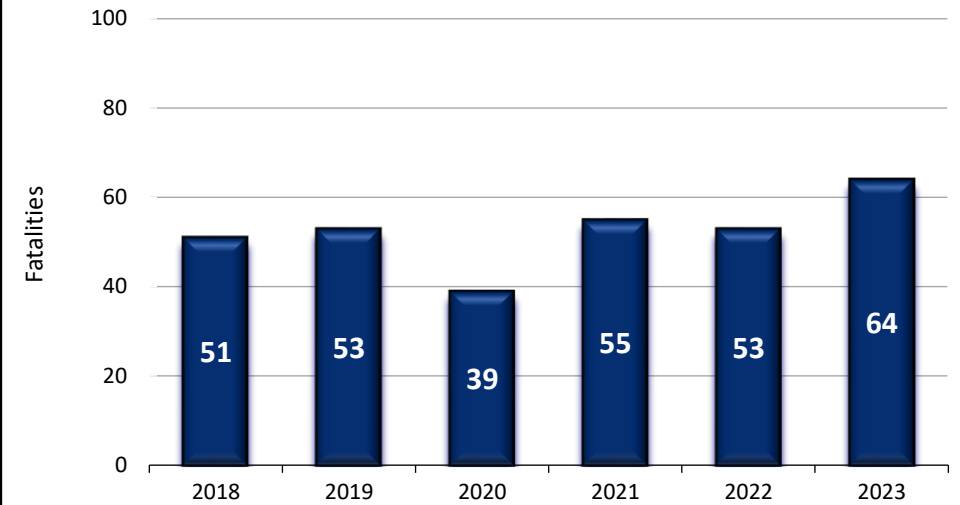
District 9

Beginning 2016 injury definitions changed to align with Model Minimum Crash Criteria 4th Edition

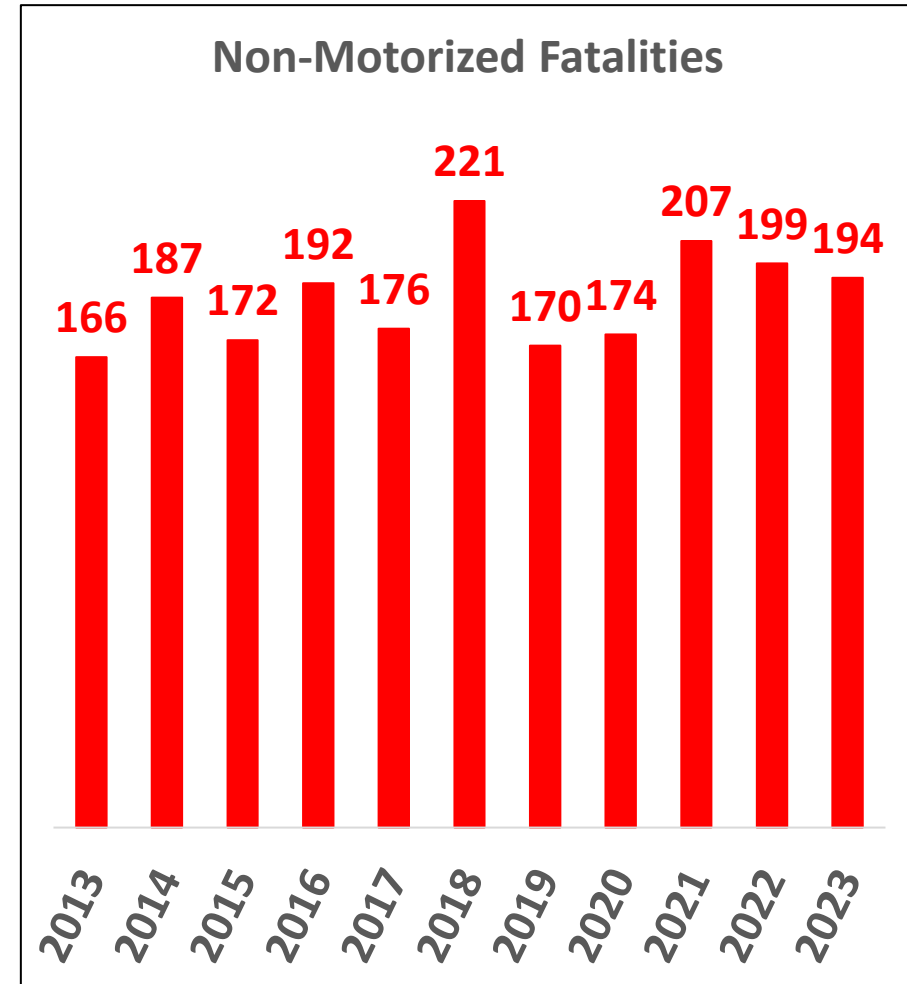
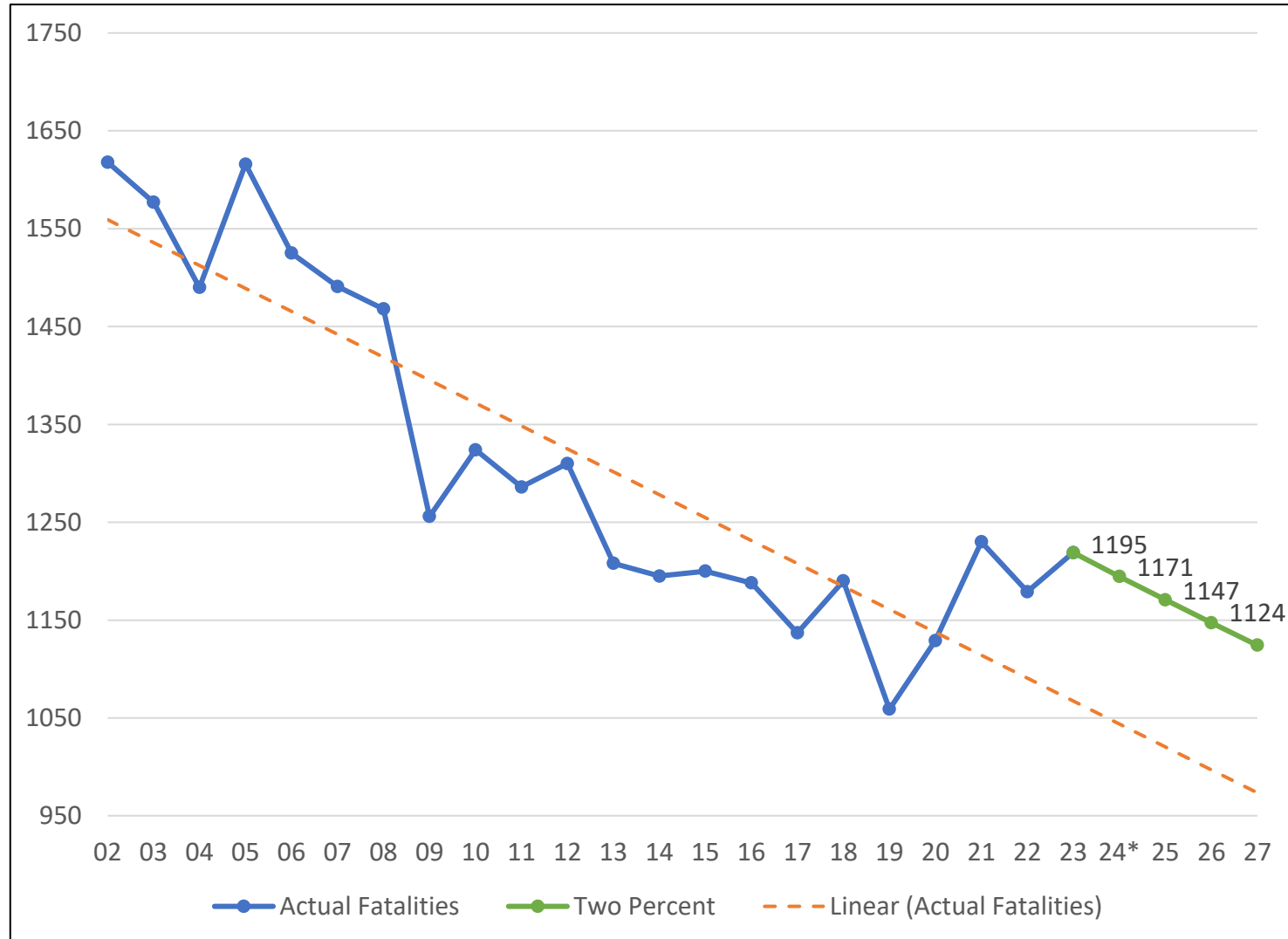
5-yr Avg Total Reportable Crashes & Major Injury Crashes



Highway Fatalities



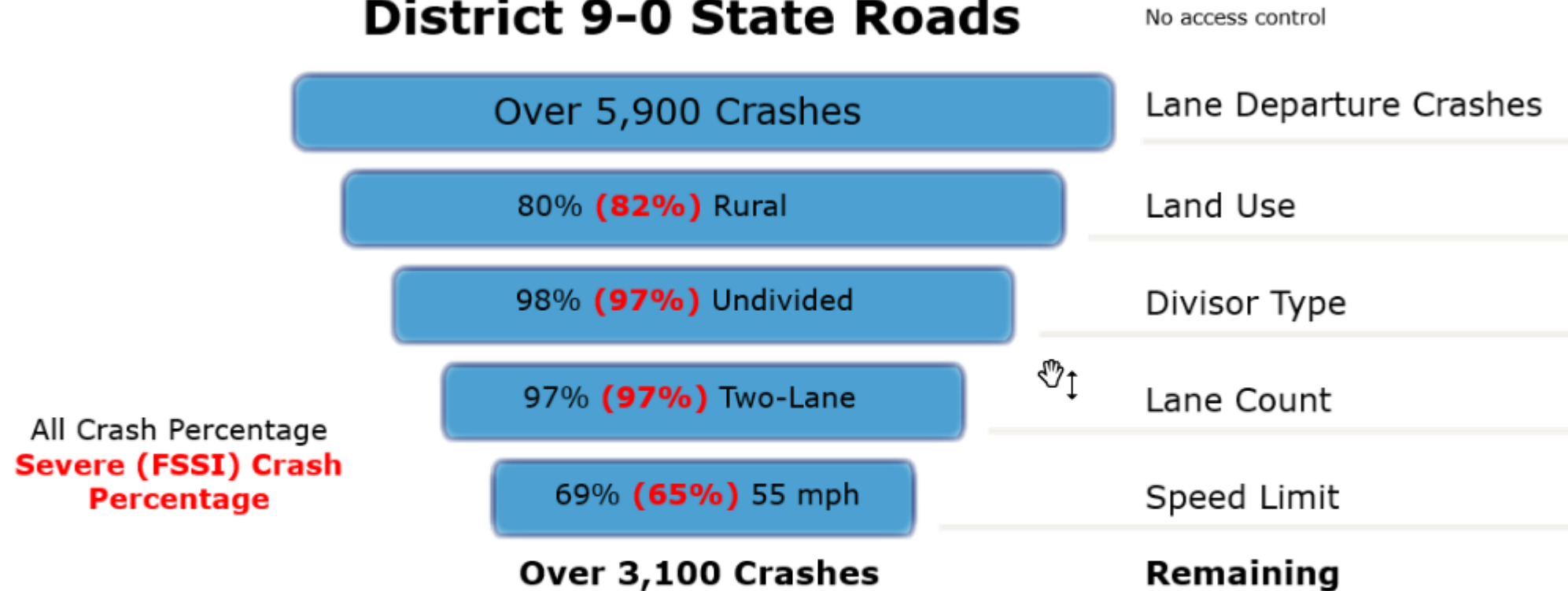
FATALITIES - STATEWIDE



*Reportable crash data for 2024 is not complete

DISTRICT HIGHWAY SAFETY PLAN

District 9-0 State Roads



FOCUS FACILITY TYPE:

Rural, Undivided, 2 Lane, 55mph roadways

DISTRICT 9 HIGHWAY SAFETY IMPROVEMENT PROJECTS

Altoona MPO: \$1,274,250/year

Johnstown MPO: \$1,102,000/year

Southern Alleghenies: \$1,573,750/year

Statewide Reserve (Set Aside): \$35,000,000/year

7 **High Friction** Contracts installed between 2015 and 2019 have an aggregated 47% reduction in all crashes looking 3 years prior vs. 3 years after.

2019 Districtwide **High Friction** Contract (110865) – 75% Reduction in all crashes 3 years before vs. 3 years after.

2016 SR 31 Two Way Left Turn Lane (88523) – 50% Reduction in all crashes 5 years before vs. 5 years after.

2018 Districtwide **Centerline & Edgeline Rumble Strip** Contract (106779) – 26% Reduction 3 years before vs. 3 years after.

BE SAFE ON OUR ROADWAYS!



AASHTO TransComm 2020 Award: Marketing/Advertising
(Print and Electronic Marketing)

THANK YOU

Questions?

FULTON COUNTY CONSTRUCTION PROJECTS

DAVID S. WOLFHOPE, P.E.

ASSISTANT CONSTRUCTION ENGINEER



Pennsylvania
Department of Transportation

AWARDED CONTRACTS



Pennsylvania
Department of Transportation

INTERSTATE 70 EB AMARANTH TO BEDFORD CO. LINE



- Scope:** Resurfacing, Structure Rehabilitation and Replacement, Drainage and Guiderail Upgrades (14.8 Miles)
- Traffic Control:** Long Term Traffic Control - Phased
- Construction Timeframe:** April 2023 – August 2027
- Contractor:** New Enterprise Stone & Lime Co., Inc.
- Current Contract:** \$32,551,576

I-70 EB AMARANTH TO BEDFORD CO. LINE

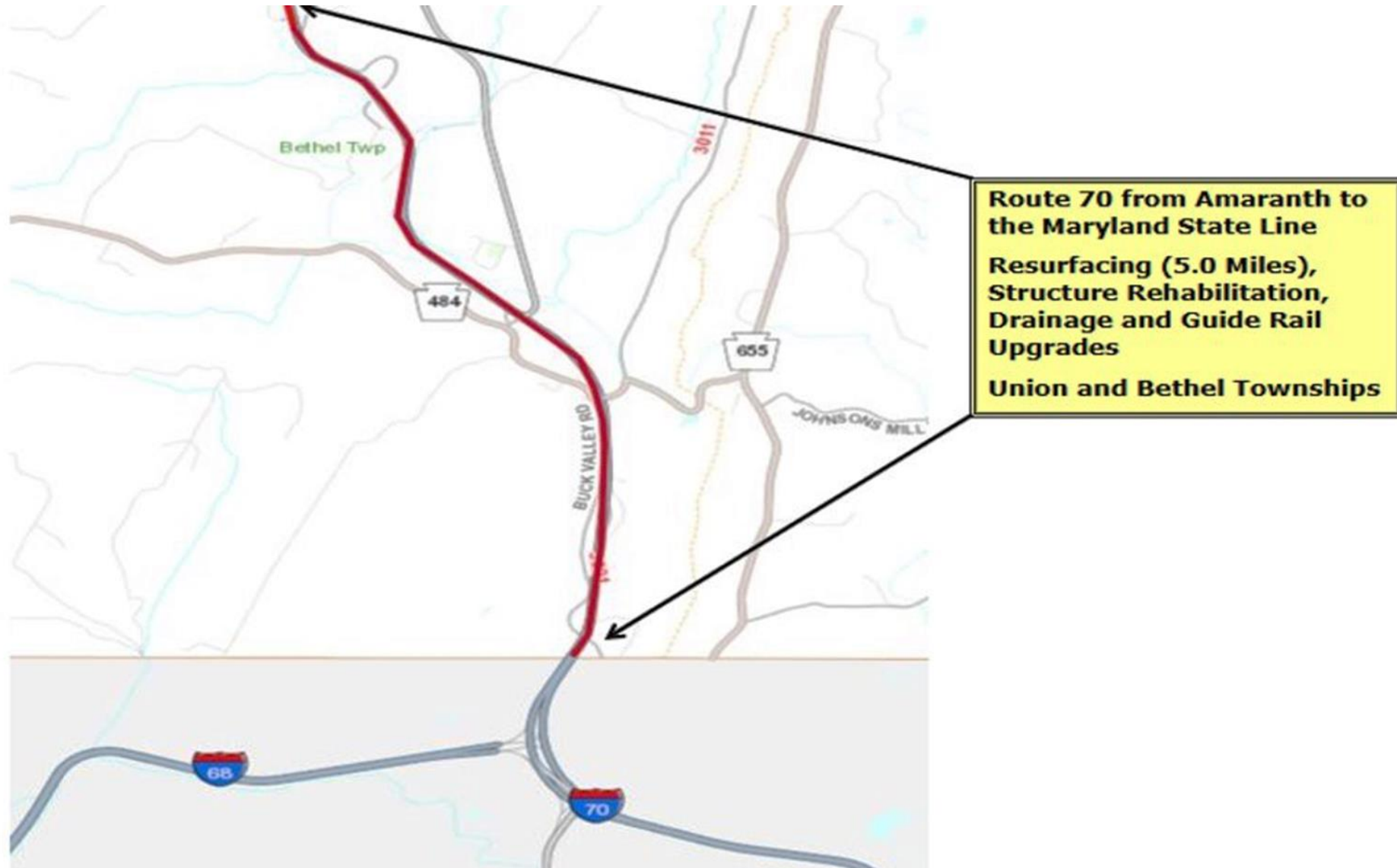


I- 70 AMARANTH TO MARYLAND STATE LINE



- Scope:** Resurfacing, Structure Rehabilitation and Replacement, Drainage and Guiderail Upgrades – Let with I-70 EB Project (5.0 Miles)
- Traffic Control:** Long Term Traffic Control - Phased
- Construction Timeframe:** April 2023 – August 2027
- Contractor:** New Enterprise Stone & Lime Co., Inc.
- Current Contract:** \$32,551,576

I-70 AMARANTH TO MARYLAND STATE LINE



ROUTE 915 OVER UNNAMED TRIB. TO LAUREL FORK

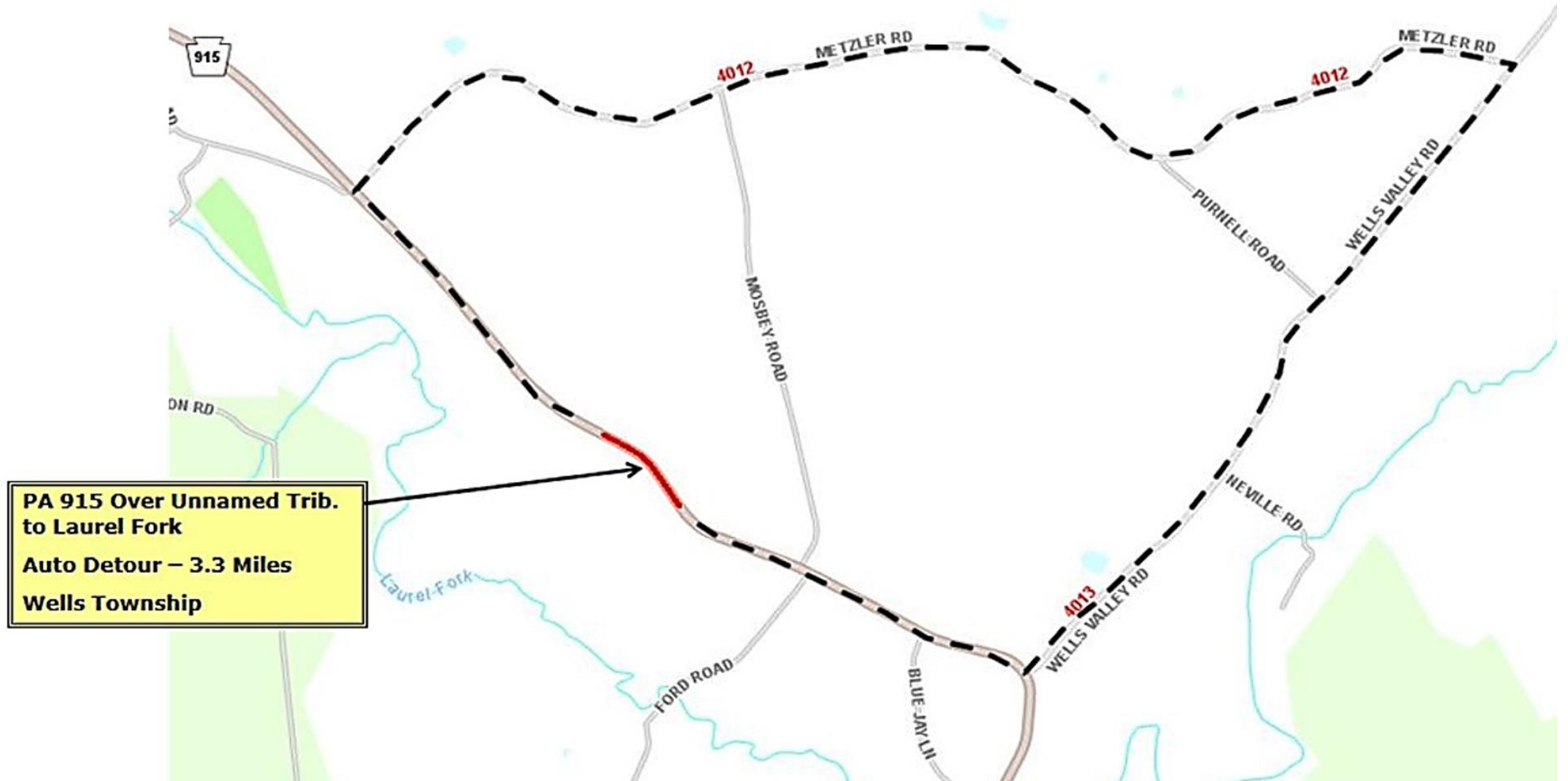


- Scope:** Structure Replacement – Precast RC Box Culvert
- Traffic Control:** Detour – Auto 3.3 Miles / Truck 25.3 Miles – 30 days
- Construction Timeframe:** March – October 2025
- Detour Implementation Date:** June 2025
- Anticipated Date Detour to be Lifted:** August 2025
- Contractor:** New Enterprise Stone & Lime Co., Inc.
- Current Contract:** \$1,475,000

ROUTE 915 OVER UNNAMED TRIB. TO LAUREL FORK



ROUTE 915 OVER UNT LAUREL FORK – AUTO DETOUR



ROUTE 915 OVER UNT LAUREL FORK – TRUCK

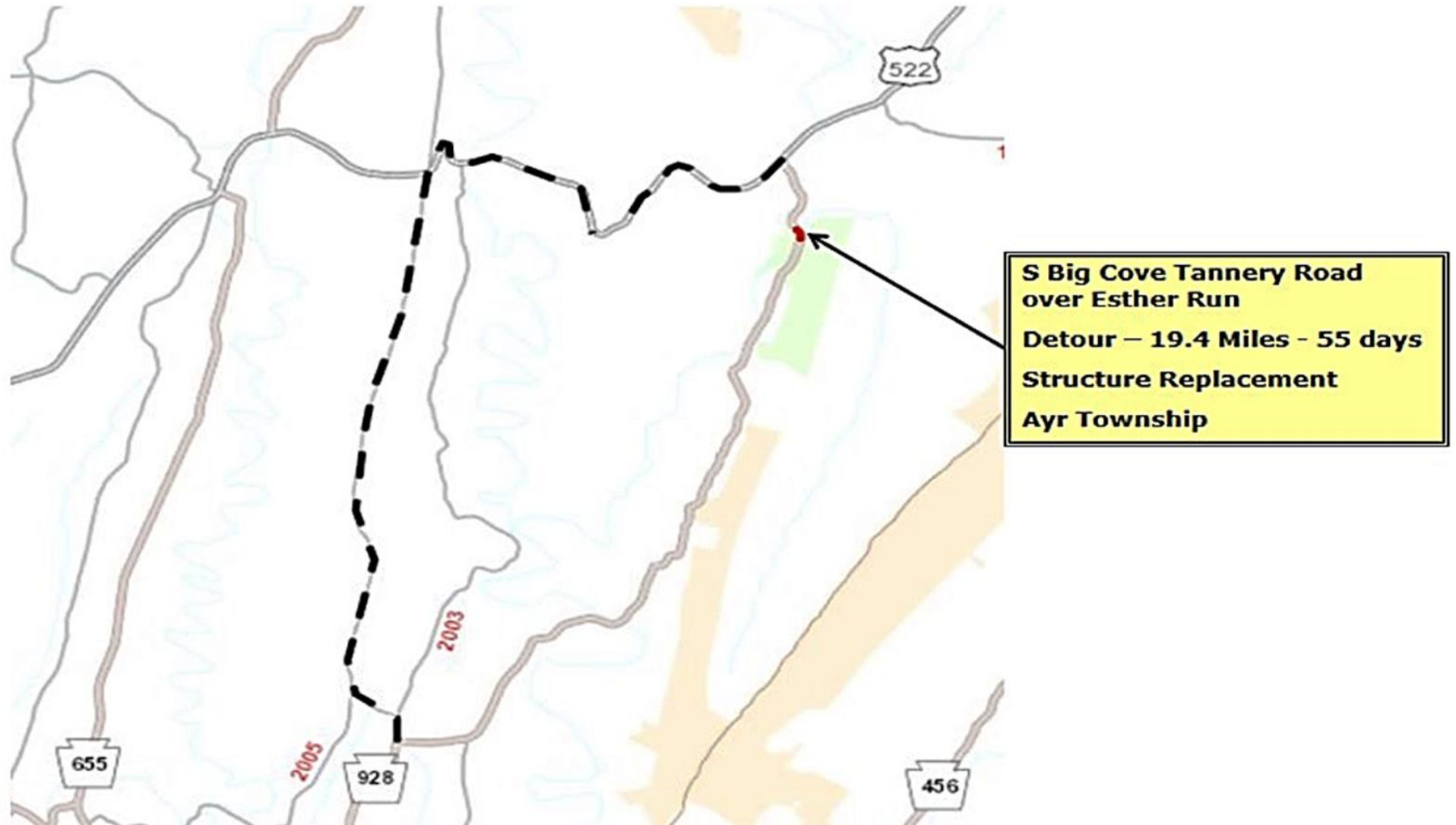


S. BIG COVE TANNERY ROAD OVER ESTHER RUN



- Scope:** Structure Replacement – Precast RC Box Culvert
- Traffic Control:** Detour – 19.4 Miles – 55 days
- Construction Timeframe:** April – November 2025
- Detour Implementation Date:** August 2025
- Anticipated Date Detour to be Lifted:** October 2025
- Contractor:** Wen-Brooke Contracting Inc.
- Current Contract:** \$1,147,534

S. BIG COVE TANNERY ROAD OVER ESTHER RUN



U.S. 30 TRUCK STUDY TURNAROUND



- Scope:** Safety Improvement – Construct truck turnaround for trucks that fail to enter Breezewood Turnpike Interchange to safely perform turning maneuvers & modify truck escape ramps
- Traffic Control:** Short-term daylight flagging
- Construction Timeframe:** April – May 2025
- Contractor:** New Enterprise Stone & Lime Co., Inc.
- Current Contract:** \$ 725,000.00

U.S. 30 TRUCK STUDY TURNAROUND

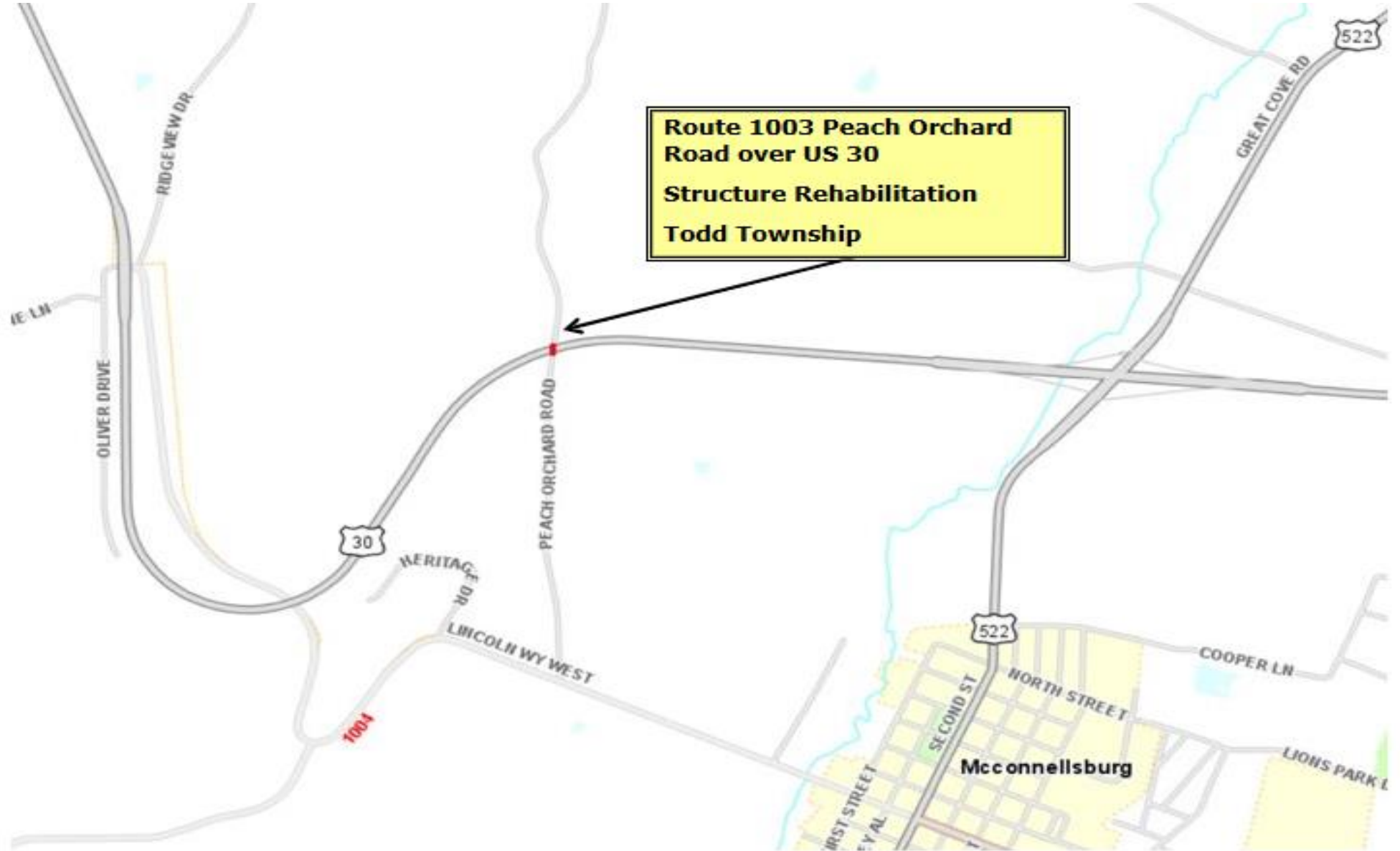


ROUTE 1003 PEACH ORCHARD ROAD OVER US 30



- Scope:** Structure Rehabilitation – Latex Modified Concrete
- Traffic Control:** Long-Term – Phased Temporary Traffic Signals Route 1003
- Construction Timeframe:** May – November 2025
- Contractor:** Cottle's Asphalt Maintenance, Inc.
- Current Contract:** \$894,348

ROUTE 1003 PEACH ORCHARD ROAD OVER US 30



ROUTE 1004 LINCOLN WAY WEST OVER U.S. 30



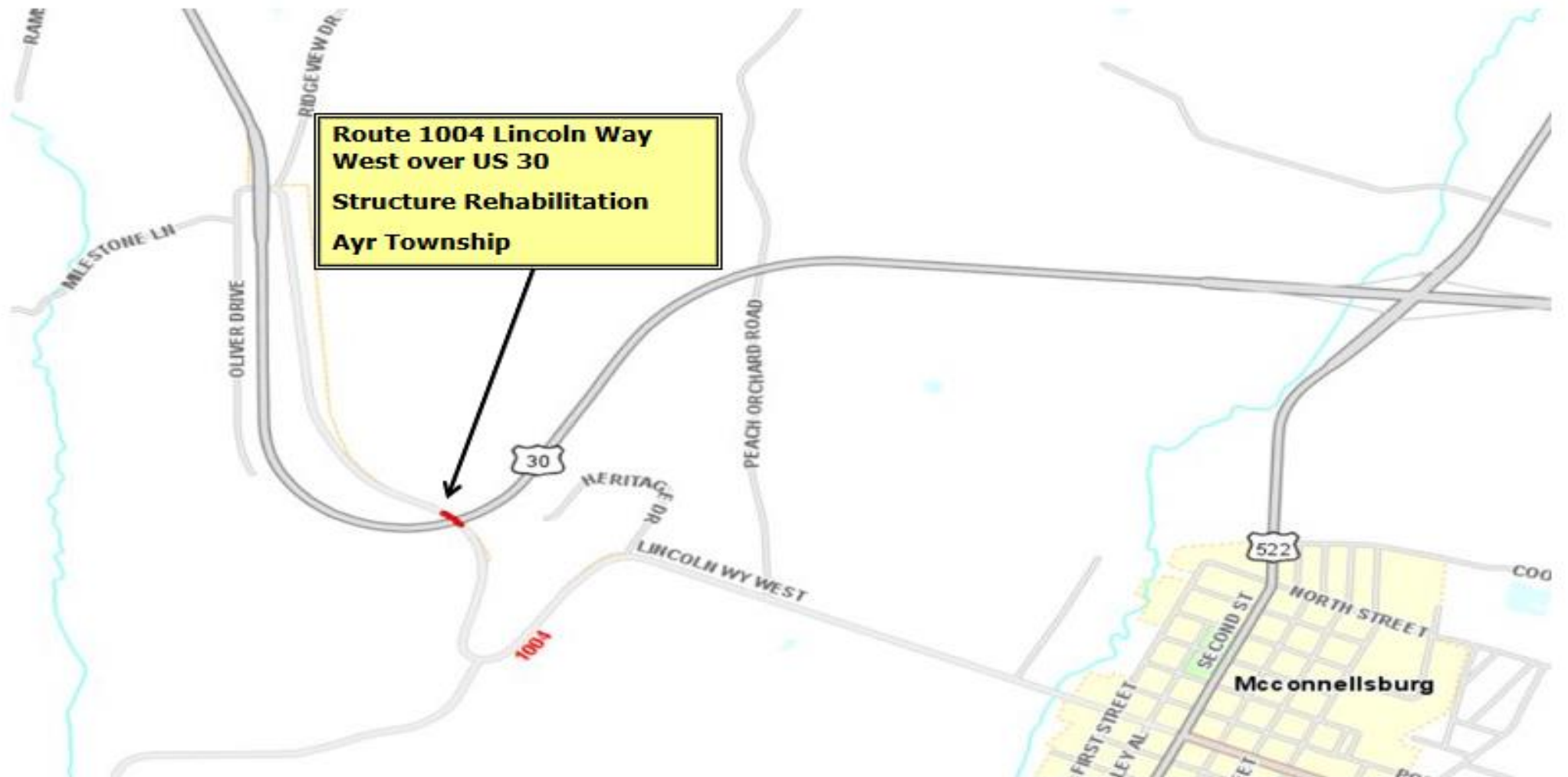
- Scope:** Structure Rehabilitation – Substructure repairs; Epoxy Surface Treatment Deck
- Traffic Control:** Long-Term – Phased Temporary Traffic Signals U.S. 30
- Construction Timeframe:** May – November 2025
- Contractor:** Cottle's Asphalt Maintenance, Inc.
- Current Contract:** \$894,348

ROUTE 1004 LINCOLN WAY WEST OVER U.S. 30



- Scope:** Structure Rehabilitation – Substructure repairs; Epoxy Surface Treatment Deck
- Traffic Control:** Long-Term – Phased Temporary Traffic Signals U.S. 30
- Construction Timeframe:** May – November 2025
- Contractor:** Cottle's Asphalt Maintenance, Inc.
- Current Contract:** \$894,348

ROUTE 1004 LINCOLN WAY WEST OVER U.S. 30

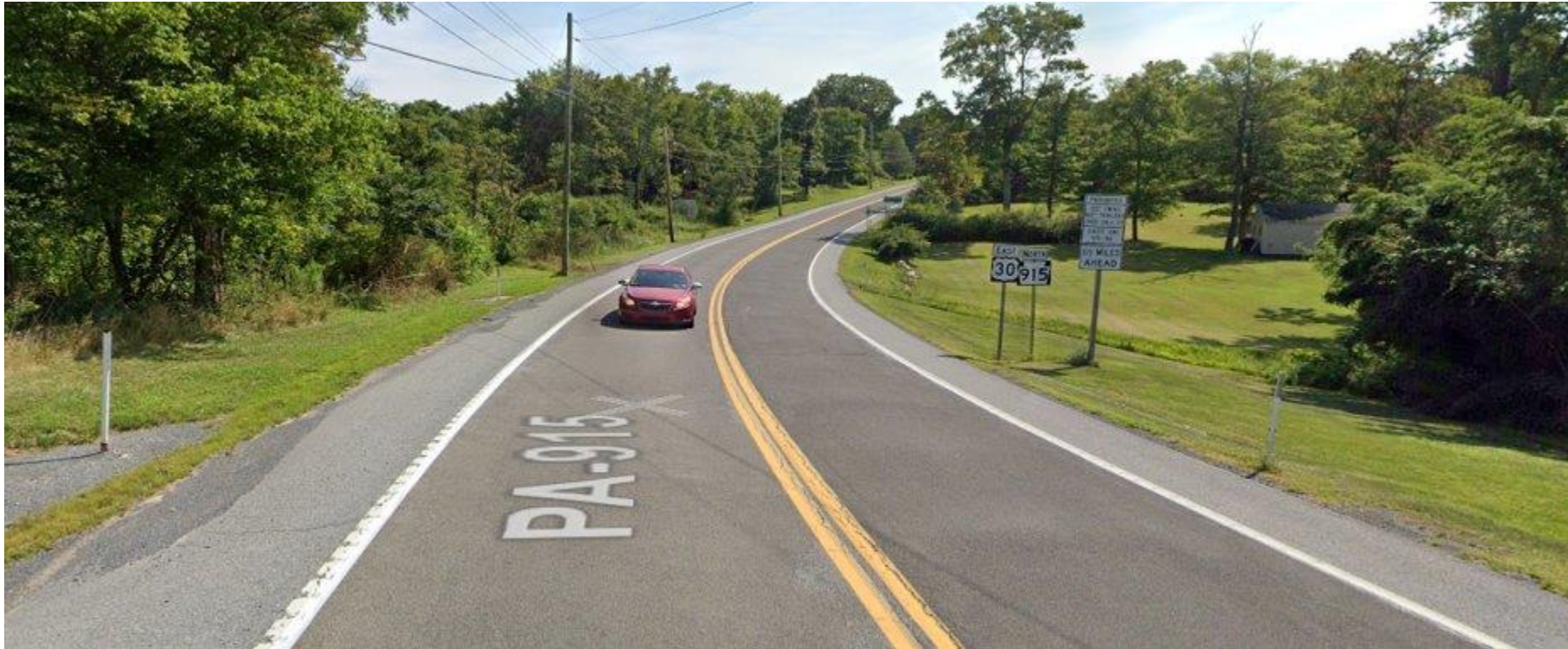


CONTRACTS TO BE BID



Pennsylvania
Department of Transportation

2025 SOUTHERN ALLEGHENIES HFST



- Scope:** Placement of High Friction Surface Treatment
- Traffic Control:** Short-Term Flagging
- Construction Estimate:** \$2,500,000
- Anticipated Bid Opening:** 2nd Quarter of 2025

2025 SOUTHERN ALLEGHENIES HFST



2025 SOUTHERN ALLEGHENIES HFST



2025 SOUTHERN ALLEGHENIES HFST



Thank You

Questions?



FULTON COUNTY MAINTENANCE ACTIVITIES

DAVID KAMMERER, P.E., ADE – MAINTENANCE

MARK J. YECKLEY, COUNTY MANAGER



Pennsylvania
Department of Transportation

FULTON COUNTY STAFF

County Maintenance Manager
Mark J. Yeckley

Assistant County Manager
Edward Mickey

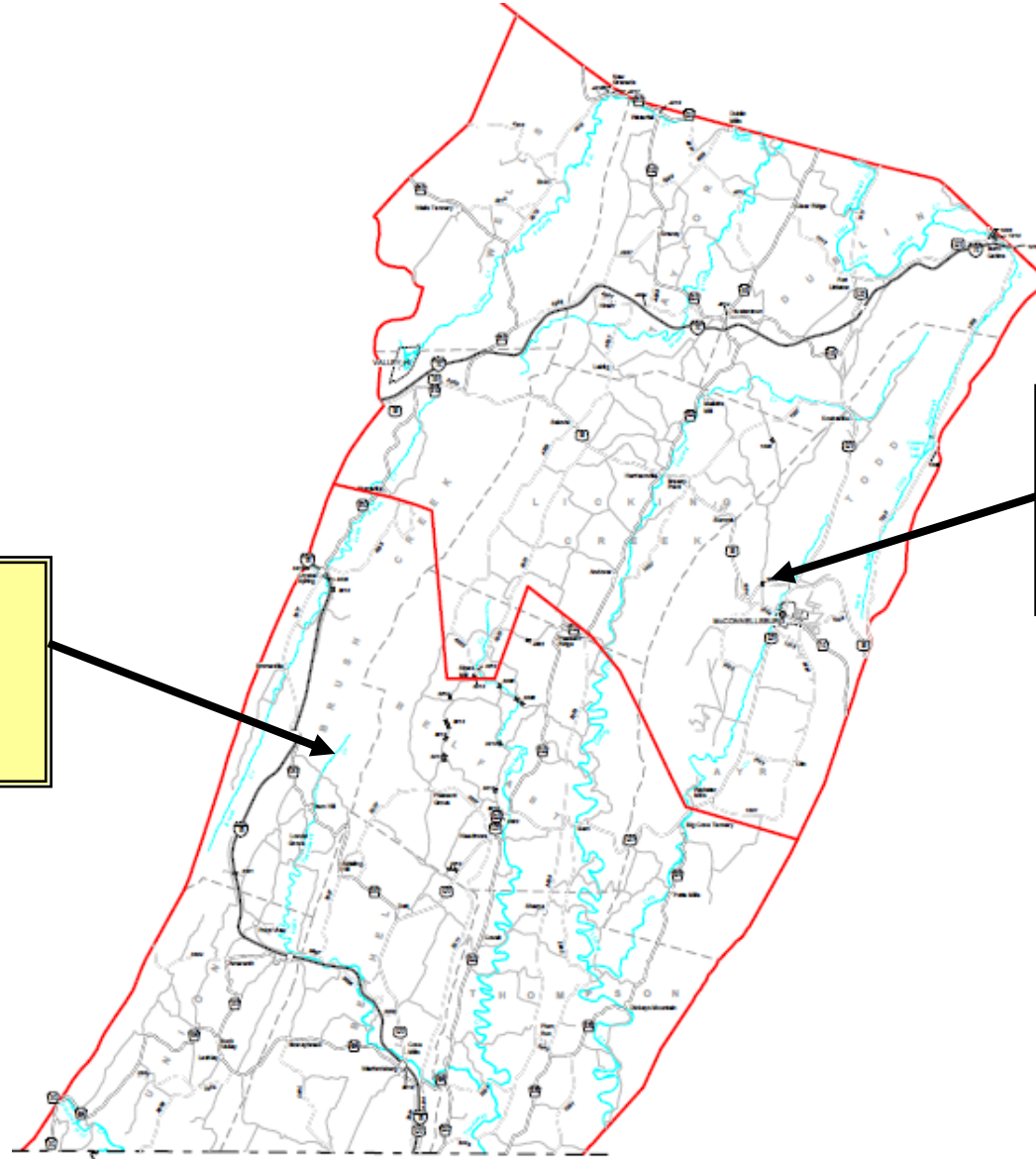
Assistant County Manager
Todd Strait

Roadway Programs Supervisor
Vacant

Equipment Manager
Jeffrey Parks

WHO TO CONTACT IN YOUR AREA

Todd Strait
717-485-3816
dstrait@pa.gov



Edward Mickey
717-485-3816
emickey@pa.gov

2024 WINTER AGREEMENT & 5 YEAR DEPARTMENT HISTORY

No Winter Municipal Service Agreements
at this time.

Avg. Rate - \$ 1,149 / mile



5-Year Department Winter Material Usage & Cost*

	2020	2021	2022	2023	2024
SALT (tons)	4,954	3,850	3,085	3,218	6,672
SKID (tons)	6,773	4,079	2,869	3,233	6,192
BRINE (gals)	105,201	89,383	94,754	64,884	108,138
COST (000's)	\$2,481	\$2,175	\$2,256	\$2,251	\$3,206

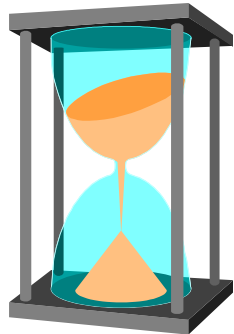
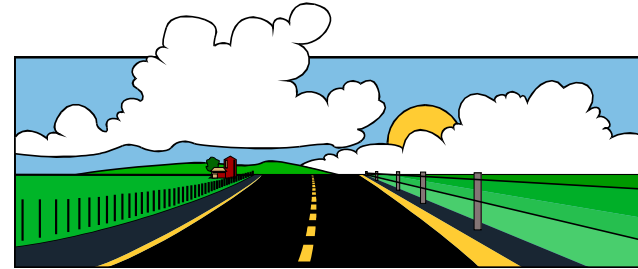
*as of 4/1/25

PHILOSOPHY OF PREVENTIVE MAINTENANCE



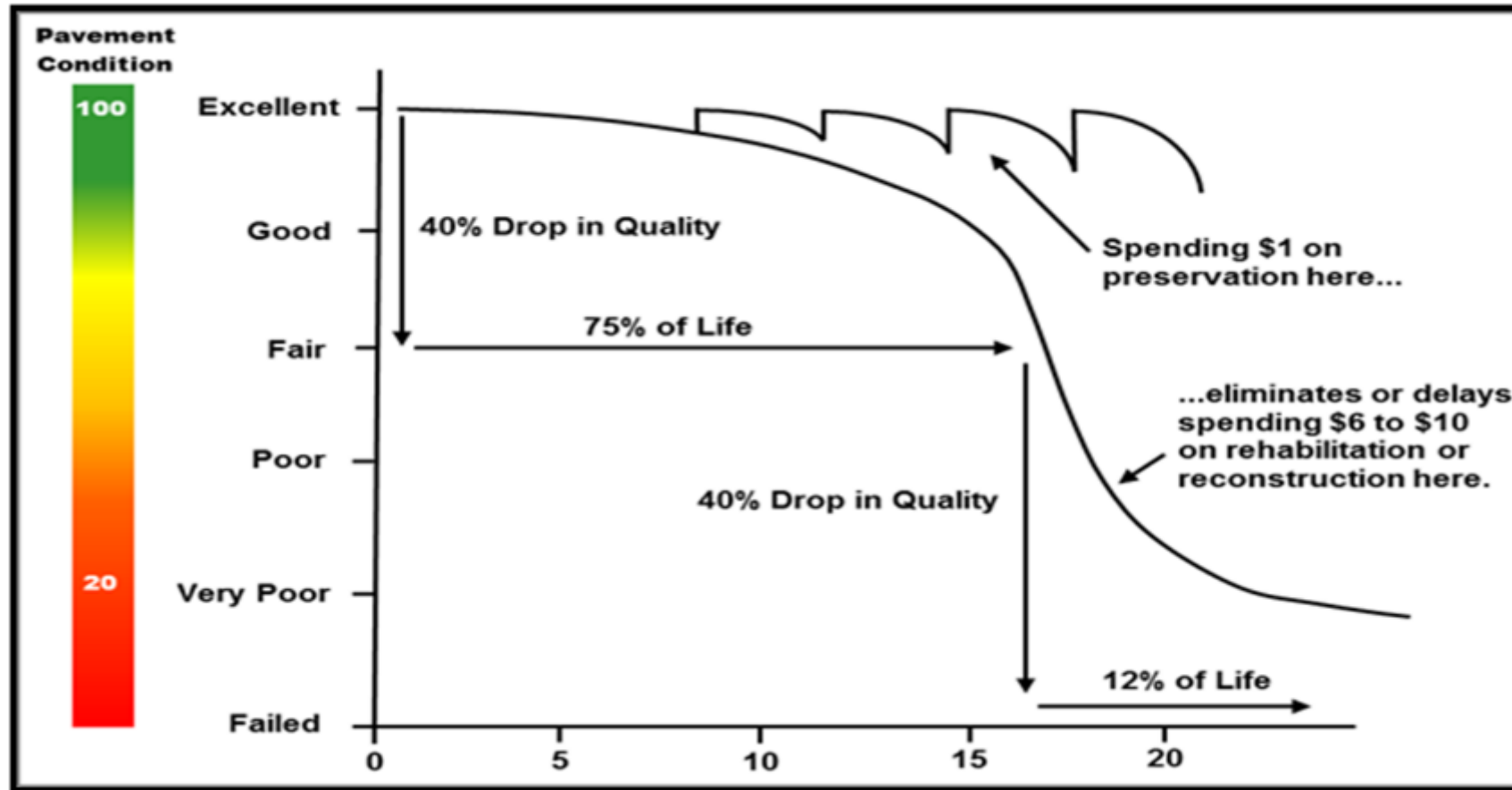
Apply the right treatment

. . . to the right pavement



. . . at the right time.

PHILOSOPHY OF PREVENTIVE MAINTENANCE



Bituminous Surface Treatment

- Economical approach to preserve and extend pavement life.
- Enrich the asphalt content of dry/worn pavements.
- Seals the roadway surface to prevent the intrusion of moisture into underlying courses.
- Restore pavement skid resistance level.
- Create a more uniform appearance.

Stretching Maintenance Dollars

- Seal coat cost is about \$16,100/mile and lasts between 5 and 7 years.
- Seal coating is an extremely cost-effective way to preserve paved roadways and is critical to PennDOT's roadway preservation program.
- In comparison, a 1.5" resurfacing project on a similar low volume road costs approximately \$175,000/mile.

SEAL COAT OPERATION

Prep Work

- Test Aggregate
- Review Existing Pavement Condition
- Prepare Seal Coat Design
- Calibrate Equipment

Day of Operation

- Weather
- Pre-Sweep
- Apply Emulsion
- Place Aggregate
- Make Adjustments
- Roll Aggregate
- Cure
- Sweep

SEAL COAT OPERATION

- Oil Distributor
- Chip spreader
- Pneumatic (Rubber) tire roller
- Power broom

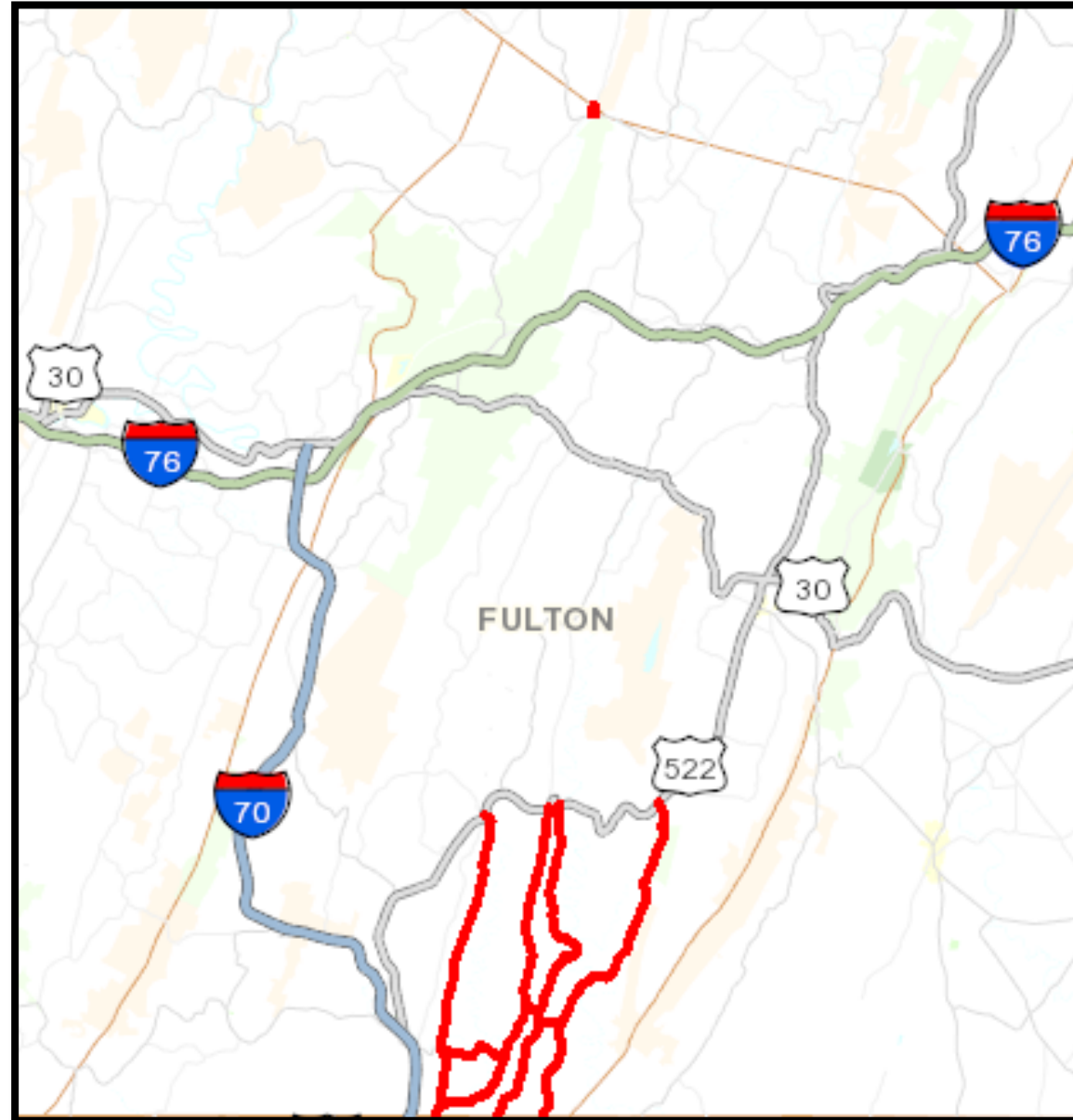


PUTTING MONEY ON THE ROAD

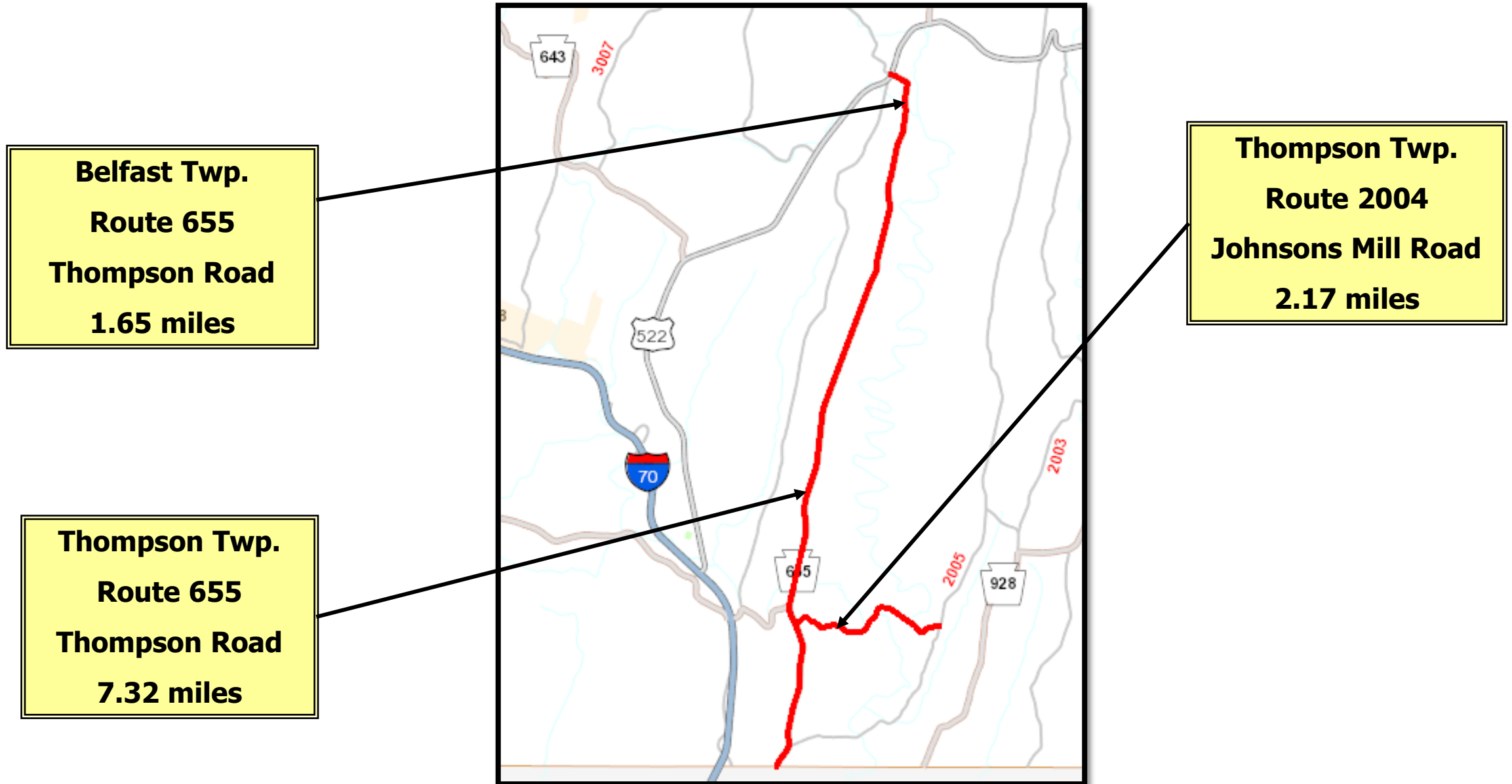
2025 Department Force Work Summary

- **Seal Coating**
 - 43.71 miles on 9 routes
 - 218,656 Gallons
 - Estimated Cost - \$ 623,770

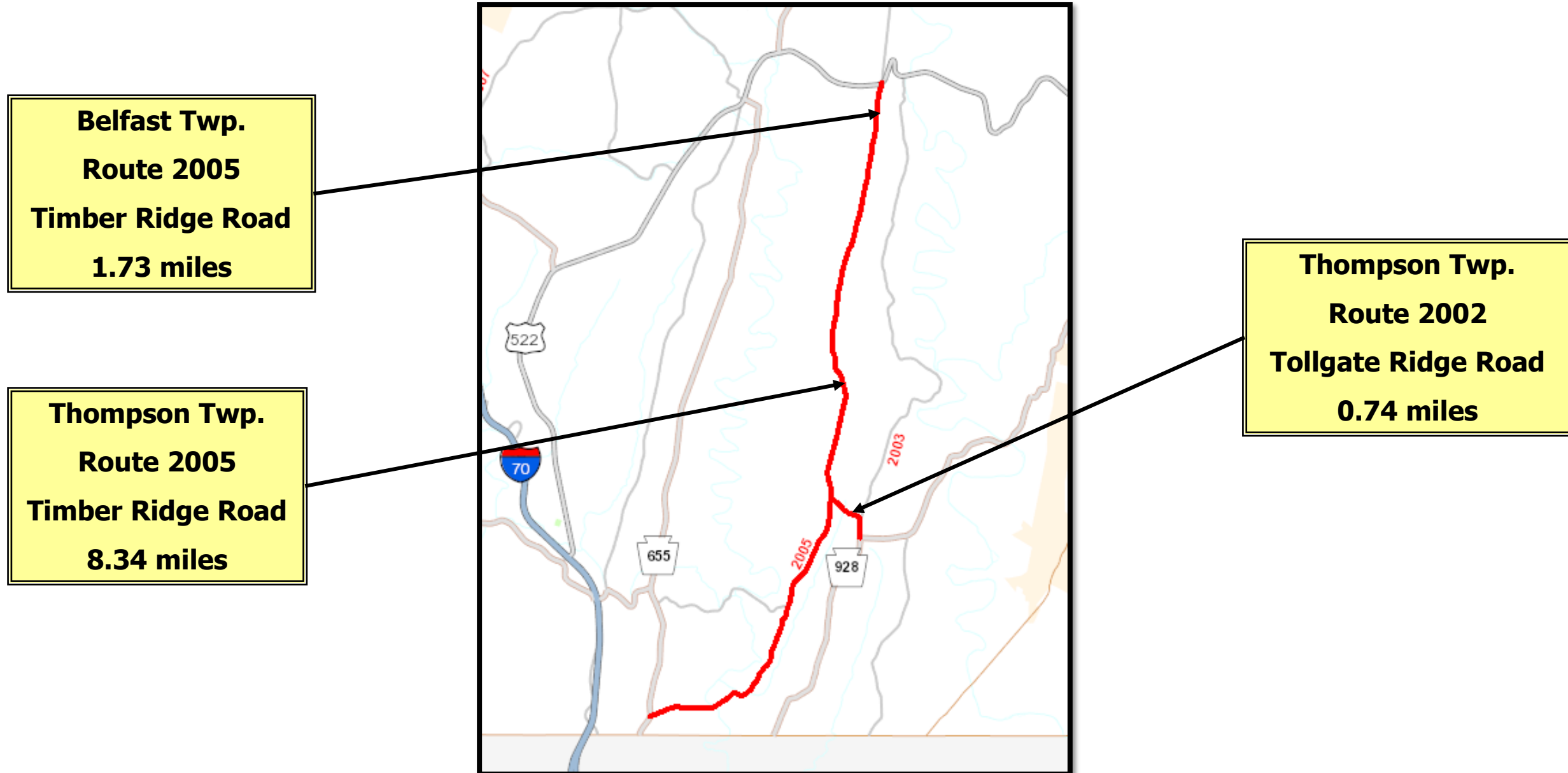
2025 DEPARTMENT FORCE SEAL COATING



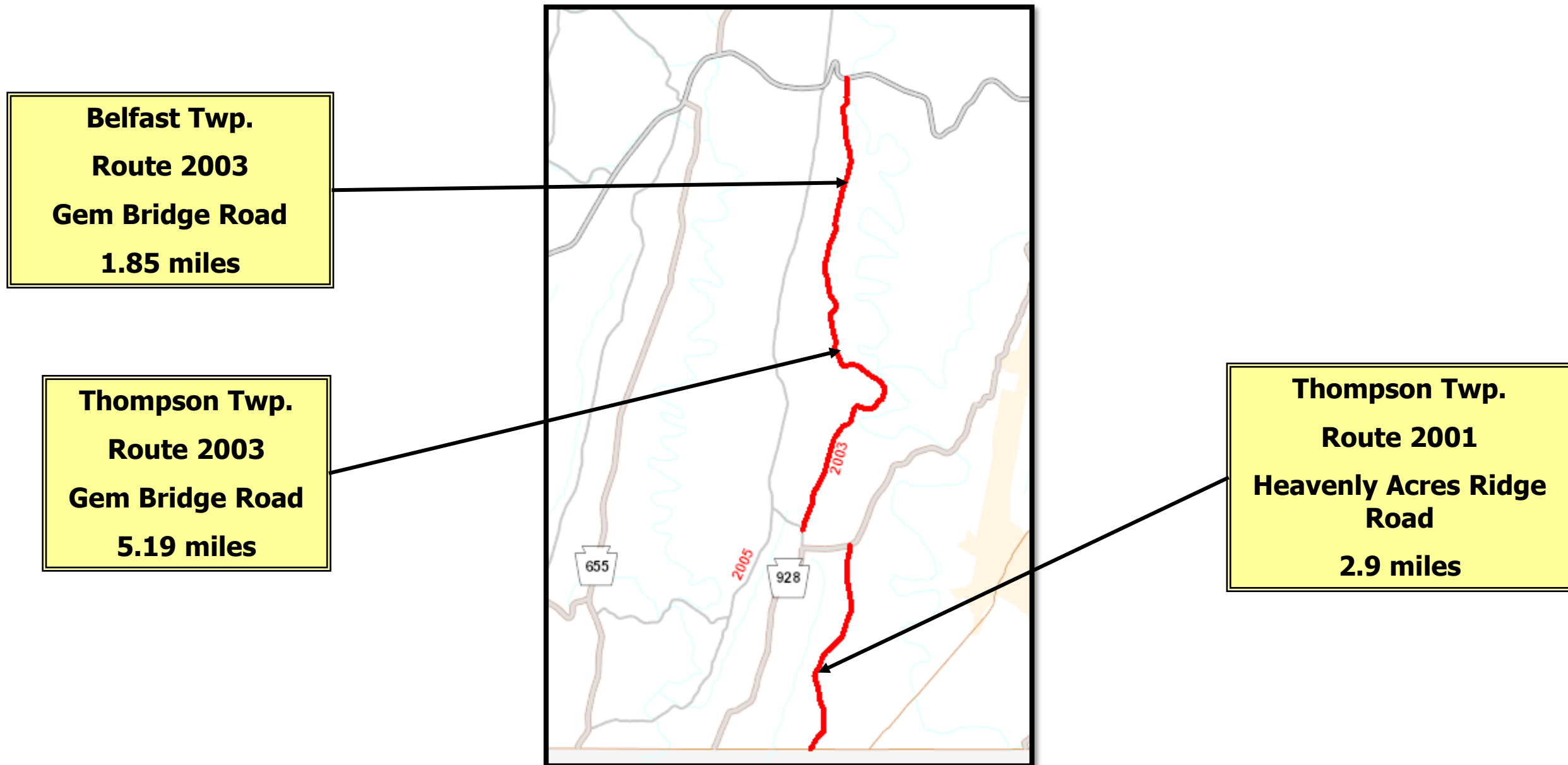
2025 DEPARTMENT FORCE SEAL COATING



2025 DEPARTMENT FORCE SEAL COATING

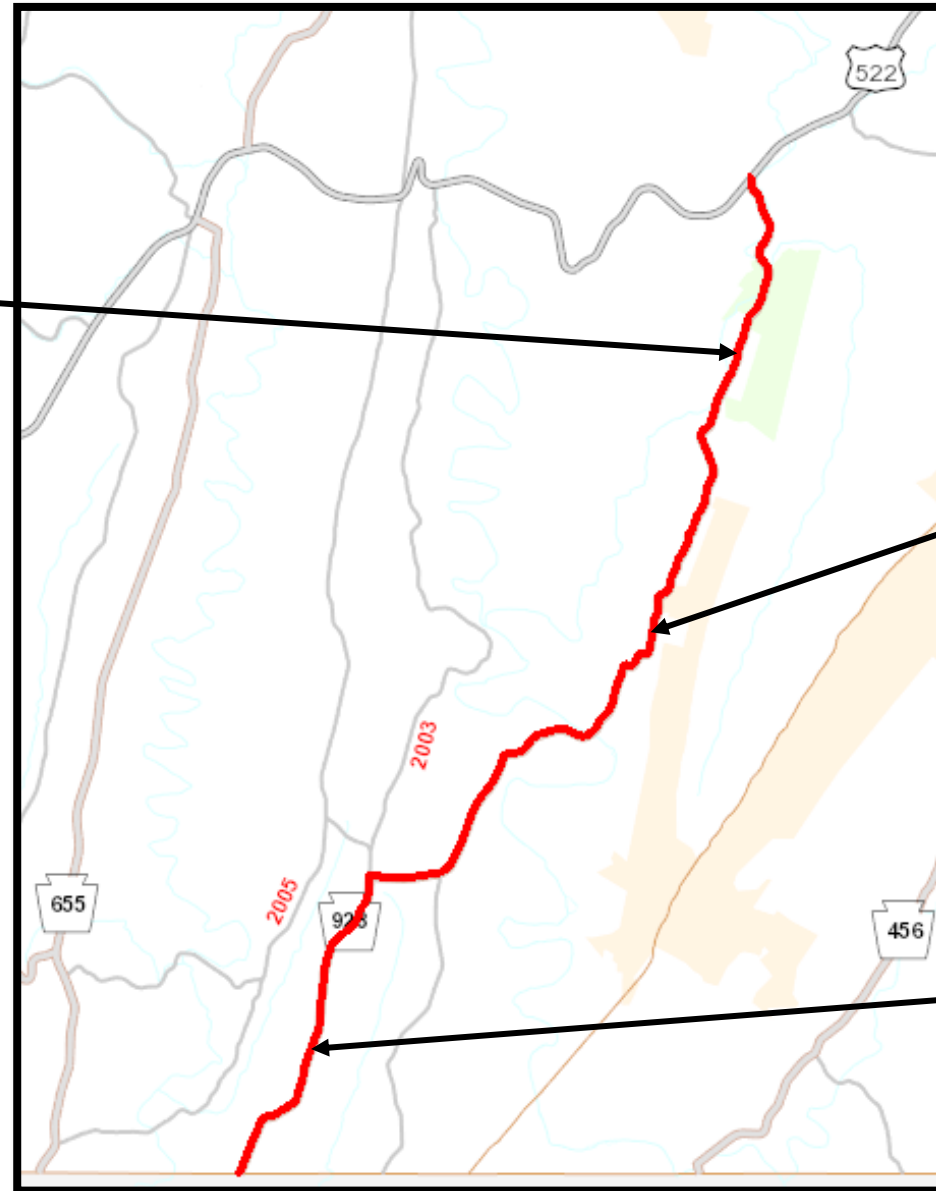


2025 DEPARTMENT FORCE SEAL COATING



2025 DEPARTMENT FORCE SEAL COATING

Ayr Twp.
Route 928
Big Cove Tannery Road
3.55 miles

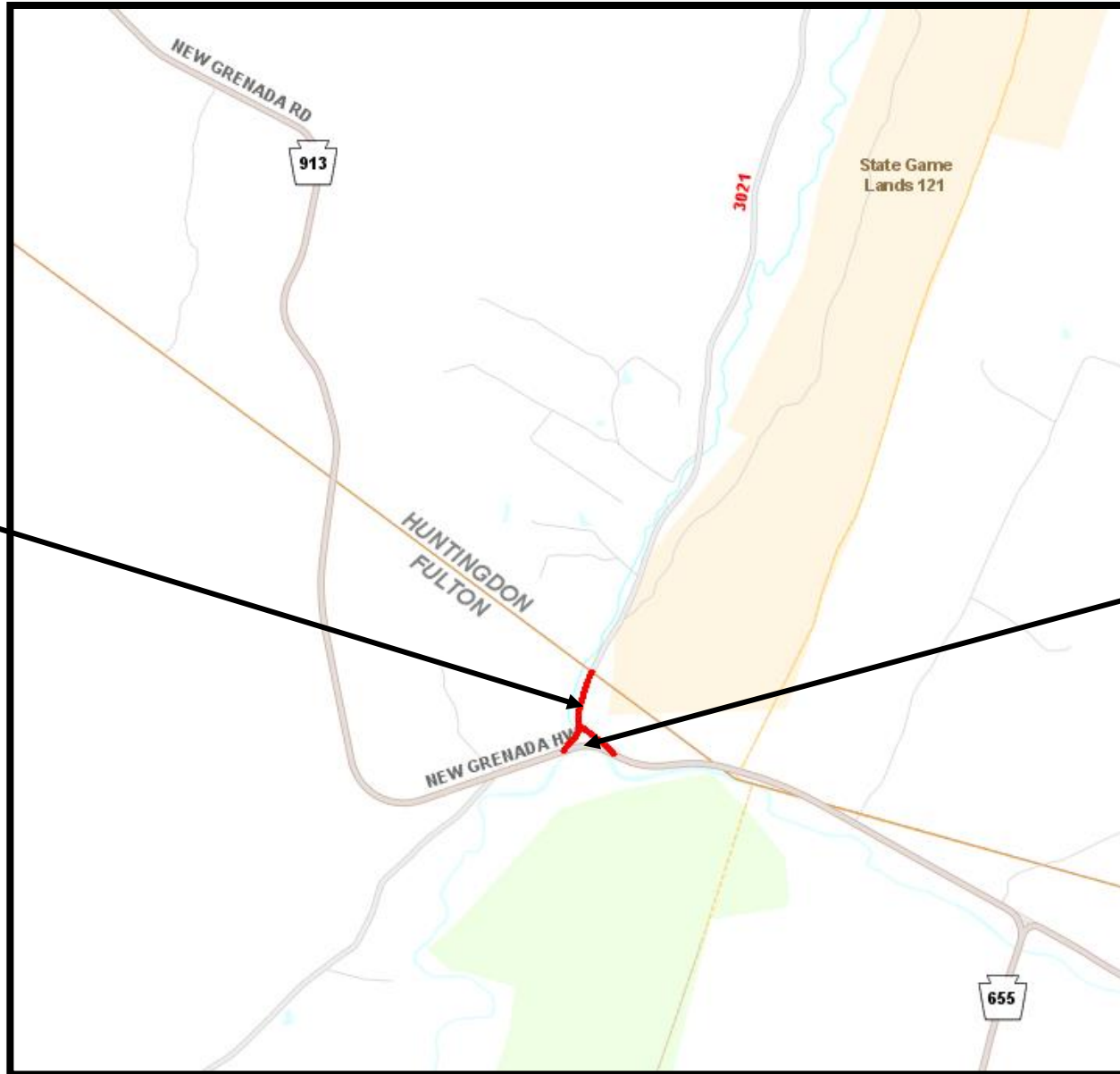


Thompson Twp.
Route 928
Big Cove Tannery Road
4.82 miles

Thompson Twp.
Route 928
Tollgate Ridge Road
3.06 miles

2025 DEPARTMENT FORCE SEAL COATING

**Wells Twp.
Route 4015
Hoover Road
0.25 miles**



**Wells Twp.
Route 4017
Houck Road
0.14 miles**

AGILITY AGREEMENTS

No active work plans are in place at this time.



Possible Activities

- Line Painting
- Salt Brine
- Sign Replacements
- Crack Sealing
- Shoulder Cutting
- Pipe Replacement

ADDITIONAL COUNTY ACTIVITIES

Patching

Guiderail Repairs and Upgrades

Sign Replacements

Crack Sealing

Shoulder Cutting

Bridge Maintenance

Pipe Replacement & Flushing

Mowing

QUESTIONS?

**THANK YOU
FOR YOUR ATTENTION!**

FULTON COUNTY DESIGN OVERVIEW

JAMES T. PRUSS, JR., P.E.
ASSISTANT DISTRICT EXECUTIVE - DESIGN



Pennsylvania
Department of Transportation

WHAT DOES “MULTIMODAL” MEAN?

- More than one way to get around!
- Not just about cars
- Think: walking, biking, buses, trains, even safe streets for trucks
- Making it easier and safer to use all these options



WHY DOES THIS MATTER TO US?

- Reduces traffic jams
- Improves air quality
- Makes our communities healthier and more active
- Boosts our local economy
- Creates safer streets for everyone



VS



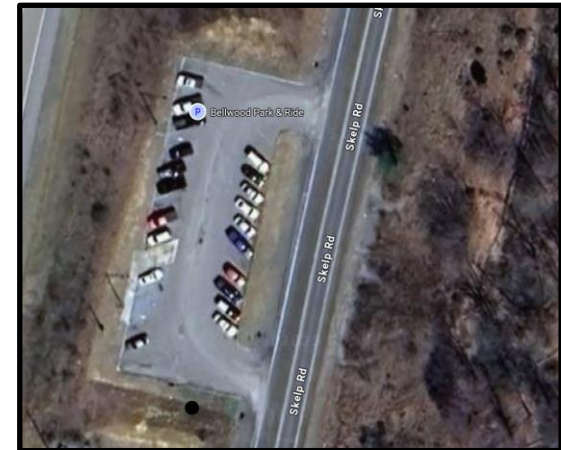
THE MTF PROGRAM: A HELPING HAND

- State grant funding to improve transportation
- Helps pay for projects that make a difference
- Two programs: (we'll focus on PennDOT)
 - PennDOT: Transportation infrastructure
 - DCED: Broader economic development through transportation



WHAT CAN BE FUNDED?

- Sidewalks and pedestrian safety improvements
- Bike lanes and trails
- Bus stop upgrades (shelters, accessibility)
- Small bridge and road repairs
- Streetscape projects (making streets more attractive and functional)
- Park-and-ride facilities
- Projects that connect different modes of transportation



WHO CAN APPLY?

- Municipalities (cities, boroughs, townships)
- Counties
- Transit agencies
- School districts
- Non-profit organizations (in some cases)
- Businesses (in some cases, often with a public partner)



FUNDING AND APPLICATION TIMELINE

Funding:

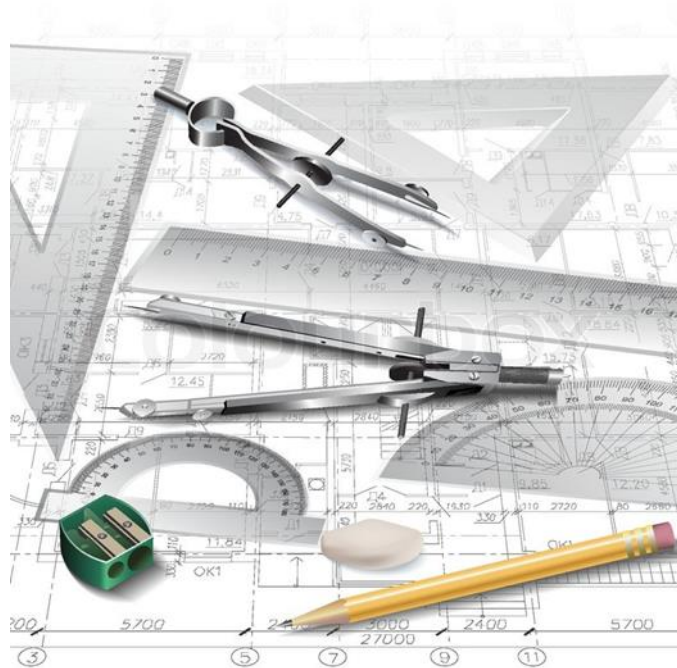
- Minimum project cost: \$100,000
- Maximum grant amount: \$3 million
- Local match requirement: 30%

Application Timeline:

- Applications are typically accepted over a 2-month period every fall
 - Last Round Accepted: 9/23/24 to 11/8/24
- Check the PennDOT website for the exact dates!
 - (This is very important)
- It takes time to prepare a good application, so start planning early!



Example MTF Projects



EXAMPLE PROJECT: BEDFORD COUNTY

Sponsor: Bedford County Airport Authority



Photo by Clark Contractors, Inc.

- Awarded \$1,238,684 in FY 2014-2016
- Maintenance hangar, office, parking and small aircraft apron construction

EXAMPLE PROJECT: BLAIR COUNTY

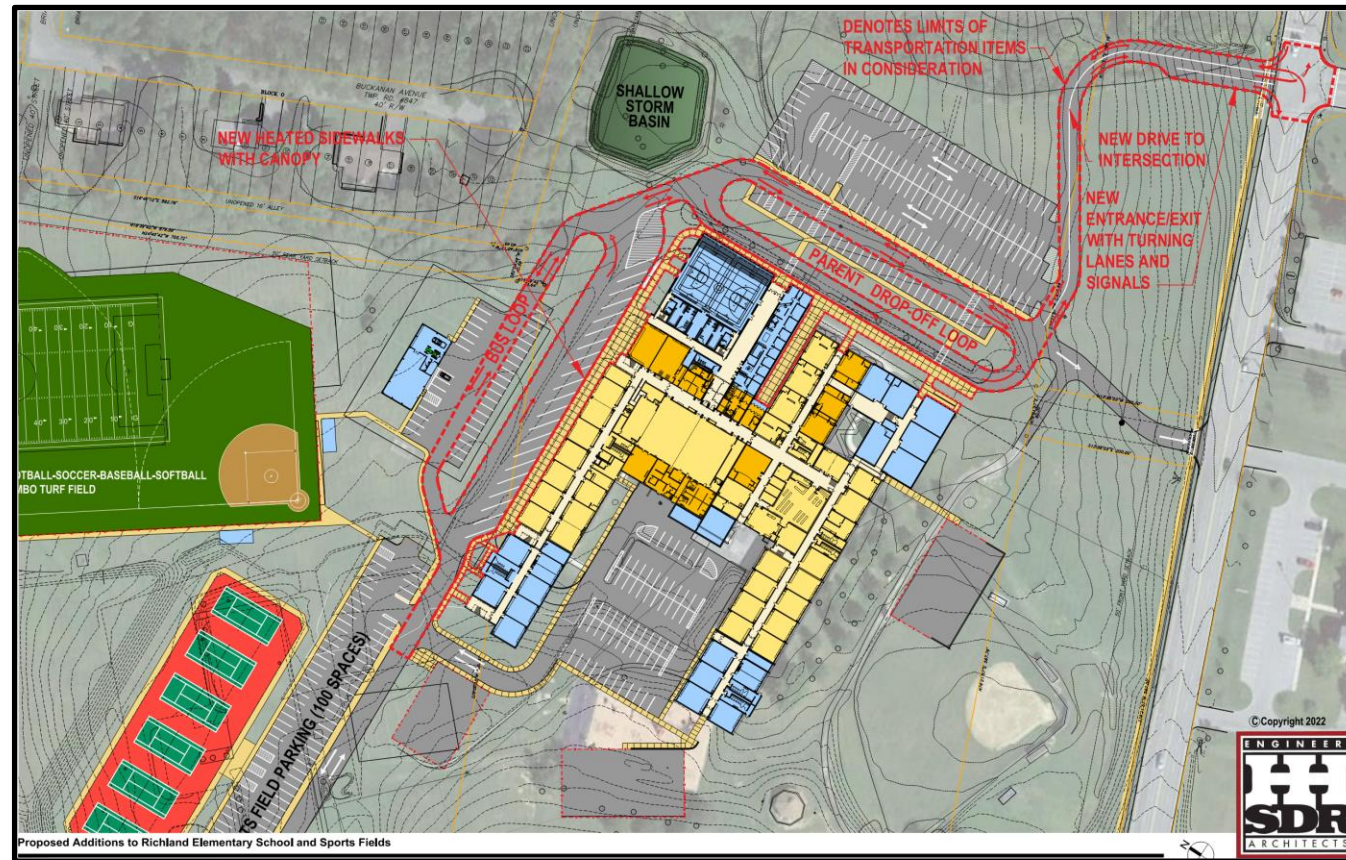
Sponsor: Rails to Trails of Central Pennsylvania, Inc.



- Awarded \$585,000 in FY 2014-2016
- Underpass construction at U.S. 22 to connect Lower Trail to Canoe Creek State Park

EXAMPLE PROJECT: CAMBRIA COUNTY

Sponsor: Richland School District



- Awarded \$1,752,250 in FY 2024-2025
- Improvements to enhance vehicular and pedestrian transportation associated with the interaction of the school and township roadways at the Richland Elementary School.

EXAMPLE PROJECT: FULTON COUNTY

Sponsor: Union Township



- Awarded \$310,000 in FY 2022-2023
- Paving and drainage improvements to a 1.5-mile portion of Hendershot Road to enhance safety and accessibility.

EXAMPLE PROJECT: HUNTINGDON COUNTY

Sponsor: Mount Union Borough



- Awarded \$1,200,000 in FY 2018-2019
- New retaining wall, roadway, sidewalks, and storm drain improvements along Pennsylvania Avenue.

EXAMPLE PROJECT: SOMERSET COUNTY

Sponsor: Jennerstown Borough



- Awarded \$261,067 in FY 2014-2016
- New sidewalk construction to provide safe passage for school students, tourists and other pedestrians and provide handicap access along the Historic Lincoln Highway U.S. 30.

WHAT TO EXPECT?



- The application is online
- You'll need to provide detailed information about your project
- This includes a budget, timeline, and how it benefits the community
- PennDOT reviews all applications
- It can take several months to hear back

MTF: ADDITIONAL INFORMATION

- **Additional Information**

- David Bratina – MTF Project Manager, Central Office (Harrisburg)
- 717.705.1230
- RA-PDMultimodalFund@pa.gov

- **Further Information**

- GOOGLE: “PennDOT MTF”

ADDITIONAL RESOURCES

Transportation Improvement Program (TIP)

Overview

Fiscally constrained program of transportation improvements

- Partners include Metropolitan & Rural Planning Organizations
- 1st four years of the Twelve-Year Program (TYP)
- Updated every other year
- Multimodal – includes all modes – highways, bridges, public transit, aviation, rail & bike/ped

More Info: www.talkpatransportation.com

Transportation Infrastructure & Investment Fund (TIIF)

A reserve of \$25 million per year in state funds set aside for transportation improvements aimed at improving Pennsylvania's transportation system related to economic development opportunities. Decisions on how to utilize this funding are at the discretion of the Governor and/or the Secretary of Transportation.

Marcellus Legacy Fund-Act 13

- Impact fee to the Highway Bridge Improvement Restricted Account in the Motor License Fund
- Used to fund replacement or repair of locally owned (county; municipal), at-risk deteriorated infrastructure
- Fund distributed based on county population (minimum \$40,000)

More Info: [Google Penndot Act 13](#)
Contact: ra-Act13@pa.gov

FUNDING OPPORTUNITIES

Multimodal Transportation Fund (MTF)

- \$40 million to PennDOT annually, with \$35 million allocated to highway and bridge-related projects and \$5 million available for projects that propose improvements to any mode.
- Awards must be matched by eligible local funding of at least 30% of the amount awarded
- Awards are time limited. Sponsors have one year after accepting award to execute reimbursement agreement, which expires three years after execution
- Applicants should coordinate project scope, purpose, & need with local authorities, planning region, and PennDOT Engineering District prior to application development and submission
- Grants are available for projects with total cost of \$100,000 not to exceed \$3,000,000

Eligibility

- Municipality
- Council of Governments
- Business/Non-profit
- Economic Development Organization
- Public Transportation Agency
- Ports or Rail/Freight Entity

Qualifying Activities

Funds may be used for the development, rehabilitation & enhancement of transportation assets including:

- Streetscapes lighting
- Sidewalk enhancement
- Pedestrian safety
- Connectivity of transportation assets
- Transit oriented development

Please note that PennDOT's multimodal program is separate from the Multimodal Transportation Fund administered by the Commonwealth Financing Authority.

More Info: [Google Penndot MTF Success Manual](#)
Contact: RA-PDMultimodalFund@pa.gov

Transportation Alternatives Set-Aside (TASA)

Categories of Eligibility

- Bicycle & Pedestrian Facilities
- Bicycle & Pedestrian Education
- Rails to Trails
- Construction of Turnouts, Overlooks and Viewing Areas
- Outdoor Advertising
- Preservation & Rehab of Historic Transportation Facilities
- Vegetation Management
- Archaeological Activities
- Storm Water Management
- Wildlife Mortality Mitigation
- Vulnerable Road User Assessment Activity

Sponsor Eligibility

- Local Governments
- Regional Transportation Authorities
- Transit Agencies
- Natural Resource or public land agencies, including federal agencies
- School districts, local education agencies, or schools
- Tribal Governments
- MPOs with <200,000 population
- Non-profit entities

Funding

- Federal cost share program, not a grant program
- Projects funded at 100% of the construction cost
- Minimum of \$50,000, maximum of \$1,500,000
- Project sponsor is responsible for pre-construction costs

More Info: [Google Penndot TASA](#)
Contact: RA-pdTASA@pa.gov



Green Light Go Program (GLG)

Pennsylvania's Municipal Signal Partnership Program

Eligible Projects

- LED Replacement
- Traffic Signal Retiming
- Study & Removal of Unwarranted signals
- Monitoring
- Innovative Technologies
- Communications
- Connections to TMC
- Detection & Controller Upgrades
- Modernization Upgrades
- Intelligent Transportation System (ITS)

Eligible Use of Funds

Grants may be used for planning, pre-construction and construction activities

Match Requirements

Municipal application & 20% match

Application

Applications accepted annually between February 1 & February 28

Funding

Total amount of funding available in 2025 is approximately \$40 million

More Info: [Google Penndot Green Light-Go](#)
Contact: RA-PDSignalFunding@pa.gov

PA Infrastructure Bank (PIB)

Overview

The Pennsylvania Infrastructure Bank (PIB) is a PennDOT program that provides low-interest loans to help fund transportation projects within the Commonwealth.

More Info: [Google PA Infrastructure Bank](#)

Contact: ra-Act13@pa.gov

Automatic Red-Light Enforcement (ARLE)

Overview

Transportation enhancement grants to local, regional & Commonwealth agencies for projects that improve highway safety, mobility & reduce congestion

Eligibility

- Local Governments
- Metropolitan Planning Organization
- Rural Planning Organization
- County Planning Organization
- Commonwealth Agencies

Categories

- Roadway Safety, Mobility and Capacity
- Bicycle and Pedestrian Improvements
- LTAP Projects
- Traffic Signal Improvements

Match Requirements

ARLE funds do not require a match. Cost Sharing is encouraged.

Application

Applications accepted annually between June 1 & June 30

Anticipated Funding

Between \$3 – \$18 million available each year.

More Info: [Google Penndot ARLE](#)

Contact: ARLE@pa.gov

Municipal Service Payments to County & Local Governments

Municipal Liquid Fuels Program

- Funds a range of projects to support municipalities in construction & maintenance of public roads
- Allocation based on population & miles of road on the approved Liquid Fuels Inventory

County Liquid Fuels Program

- Funds a range of projects to support construction & maintenance of county roads & bridges
- Allocation based on historical gas consumption rates
- Annual Report submission required

County Fee for Local Use Fund

- Established under Act 89
- \$5 fee for local use on nonexempt vehicles registered to an address in the county
- Used for transportation purposes

All Subject to Eligibility Requirements

More Info: [Google Penndot Local Government](#)

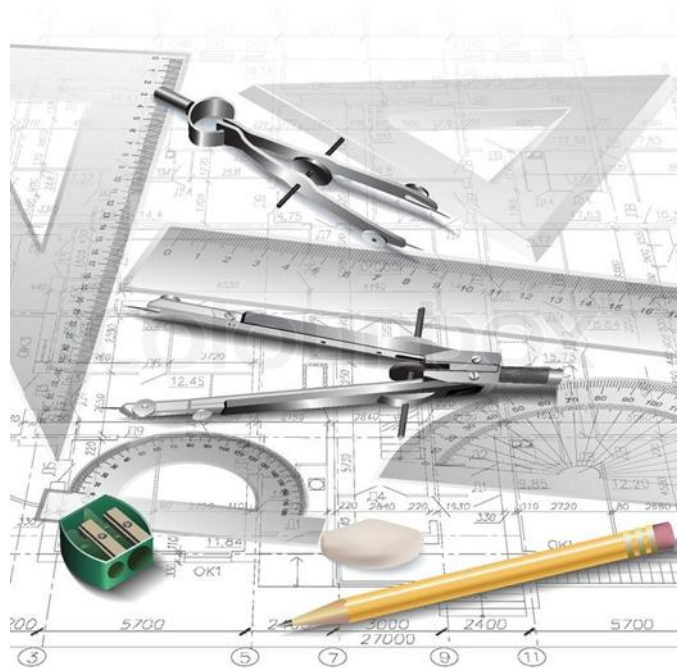
Redevelopment Assistance Capital Program (RACP)

The RACP is a Commonwealth grant program administered by the Office of the Budget for the design, acquisition and construction of regional economic, cultural, civic, recreational, and historical improvement projects. Projects should have a regional or multi-jurisdictional impact and generate substantial increases or maintain current levels of employment, tax revenues, or other measures of economic activity. RACP projects are state-funded projects that cannot obtain primary funding under other state programs.

More Info: [Google PA RACP](#)



Current Design Projects



PROJECTS TO BE PRESENTED

Any projects bid between September 2025 to Dec 2027 that:

- Have a construction cost greater than \$1M

Any projects bid in 2028 and 2029 that:

- Have a construction cost greater than \$2.5M, or

Projects of general interest

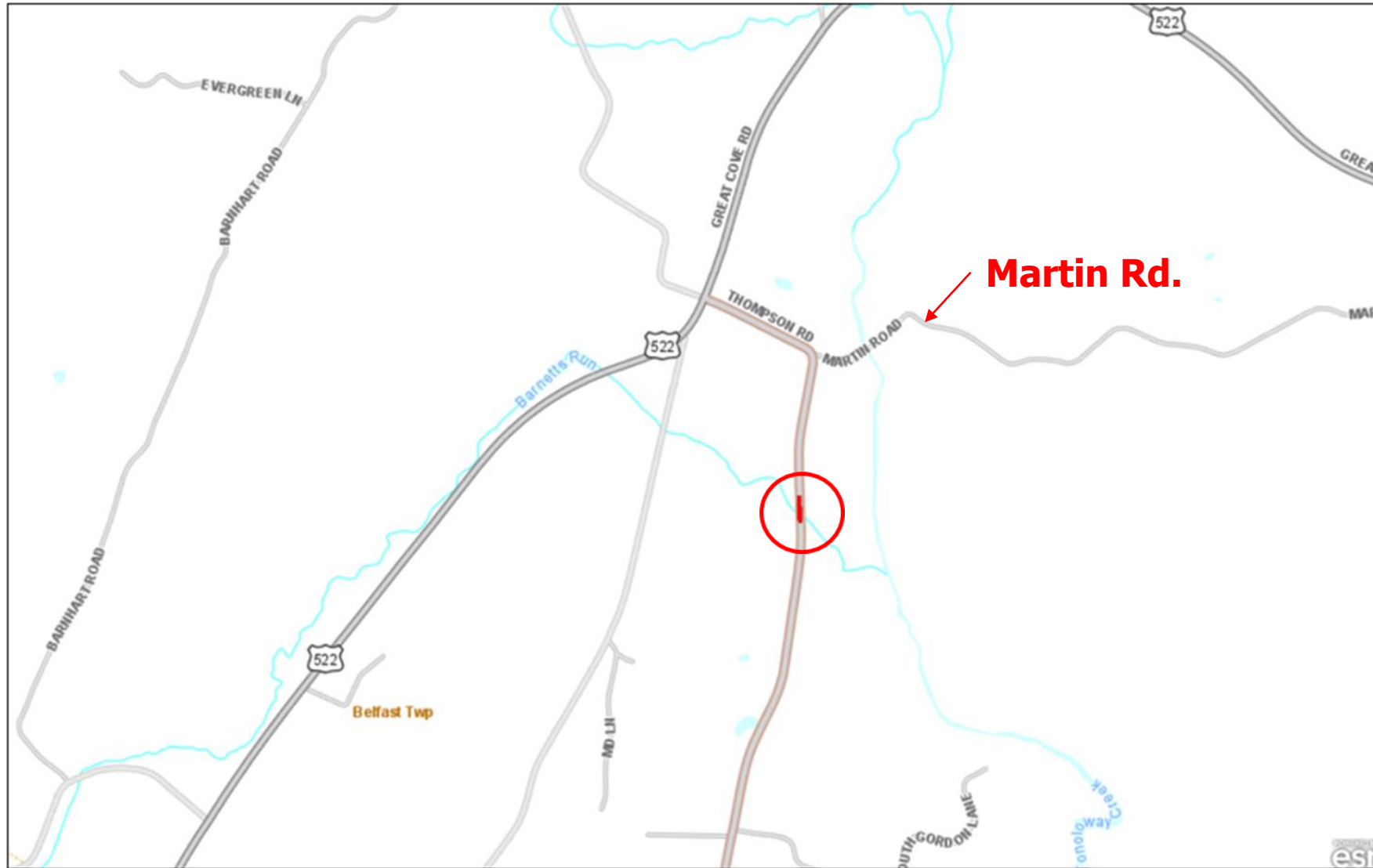


ROUTE 655 BARNETT'S RUN



- **Project Type:** Bridge Rehabilitation
- **Location:** On Route 655 (Thompson Road) over Barnetts Run in Belfast Township
- **Construction Estimate:** \$1.0 - \$5.0 Million
- **Anticipated Bid Opening:** 1st Quarter 2026

ROUTE 655 BARNETT'S RUN

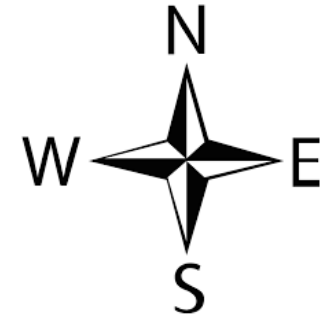
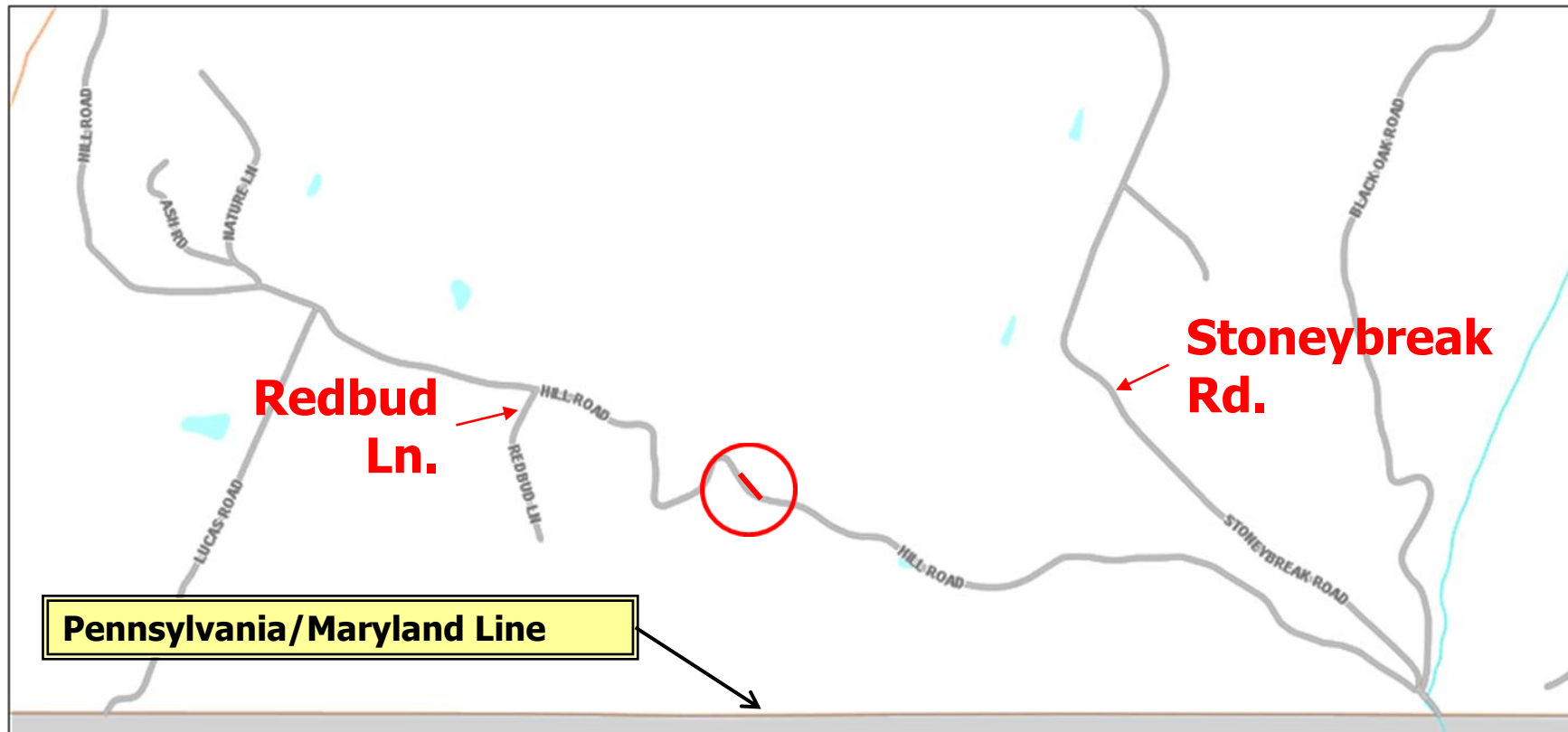


T-313 HILL ROAD OVER TRIBUTARY TO SAWMILL HOLLOW RUN



- **Project Type:** Bridge Replacement
- **Location:** On T-313 (Hill Road) over Tributary to Sawmill Hollow Run in Bethel Township
- **Construction Estimate:** \$1.0 - \$5.0 Million
- **Anticipated Bid Opening:** 1st Quarter 2026

T-313 HILL ROAD OVER TRIBUTARY TO SAWMILL HOLLOW RUN

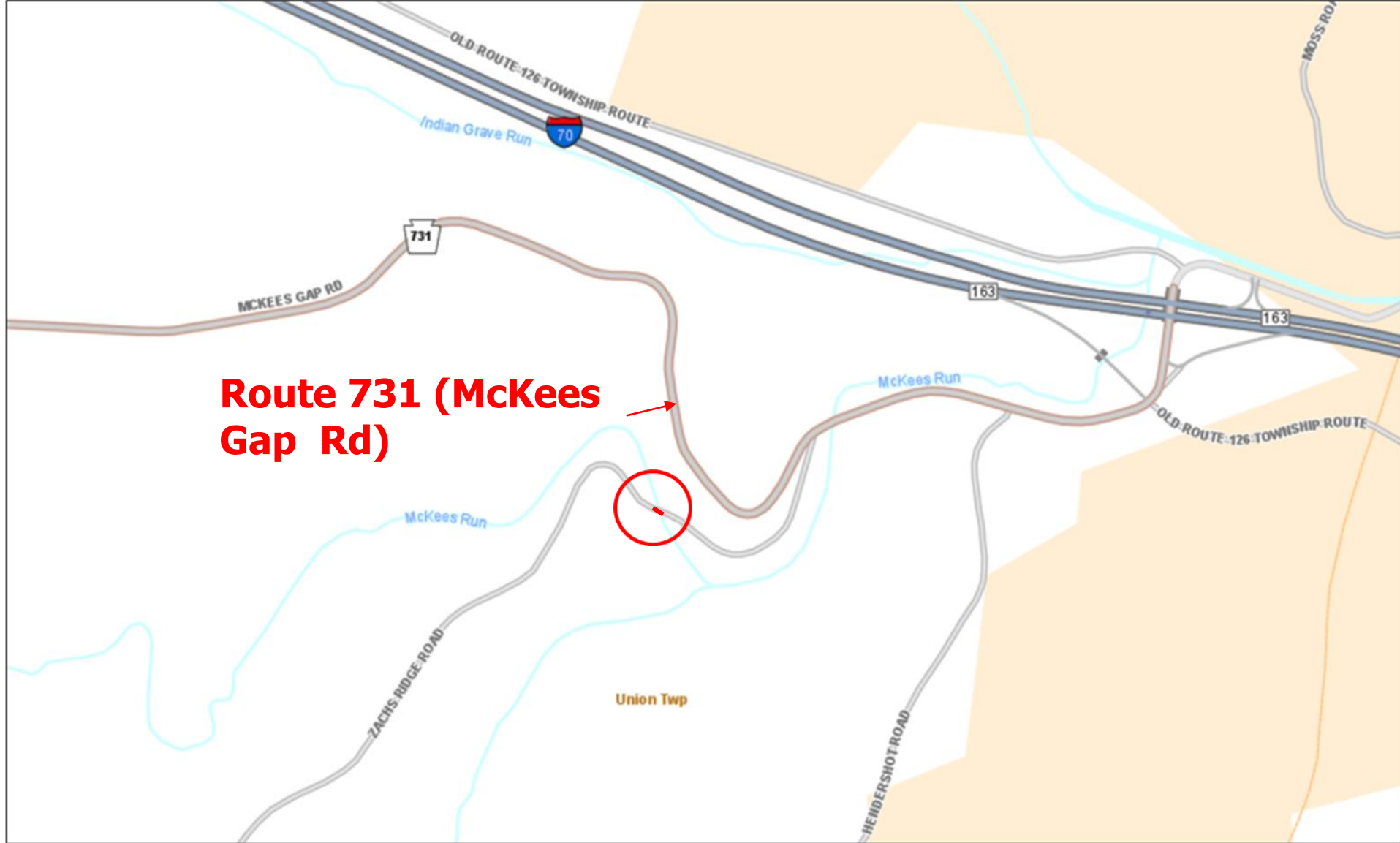


T-330 ZACHS RIDGE ROAD



- **Project Type:** Bridge Replacement
- **Location:** On T-330 (Zachs Ridge Road) over McKees Run in Union Township
- **Construction Estimate:** \$1.0 - \$5.0 Million
- **Anticipated Bid Opening:** 1st Quarter 2026

T-330 ZACHS RIDGE ROAD



U.S. 30 - BEDFORD COUNTY TO BARK ROAD



- **Project Type:** Resurfacing
- **Location:** On U.S. 30 from the Bedford County Line to Bark Road in Brush Creek Township
- **Construction Estimate:** \$1.0 Million - \$5.0 Million
- **Anticipated Bid Opening:** 2nd Quarter 2027

U.S. 30 - BEDFORD COUNTY TO BARK ROAD

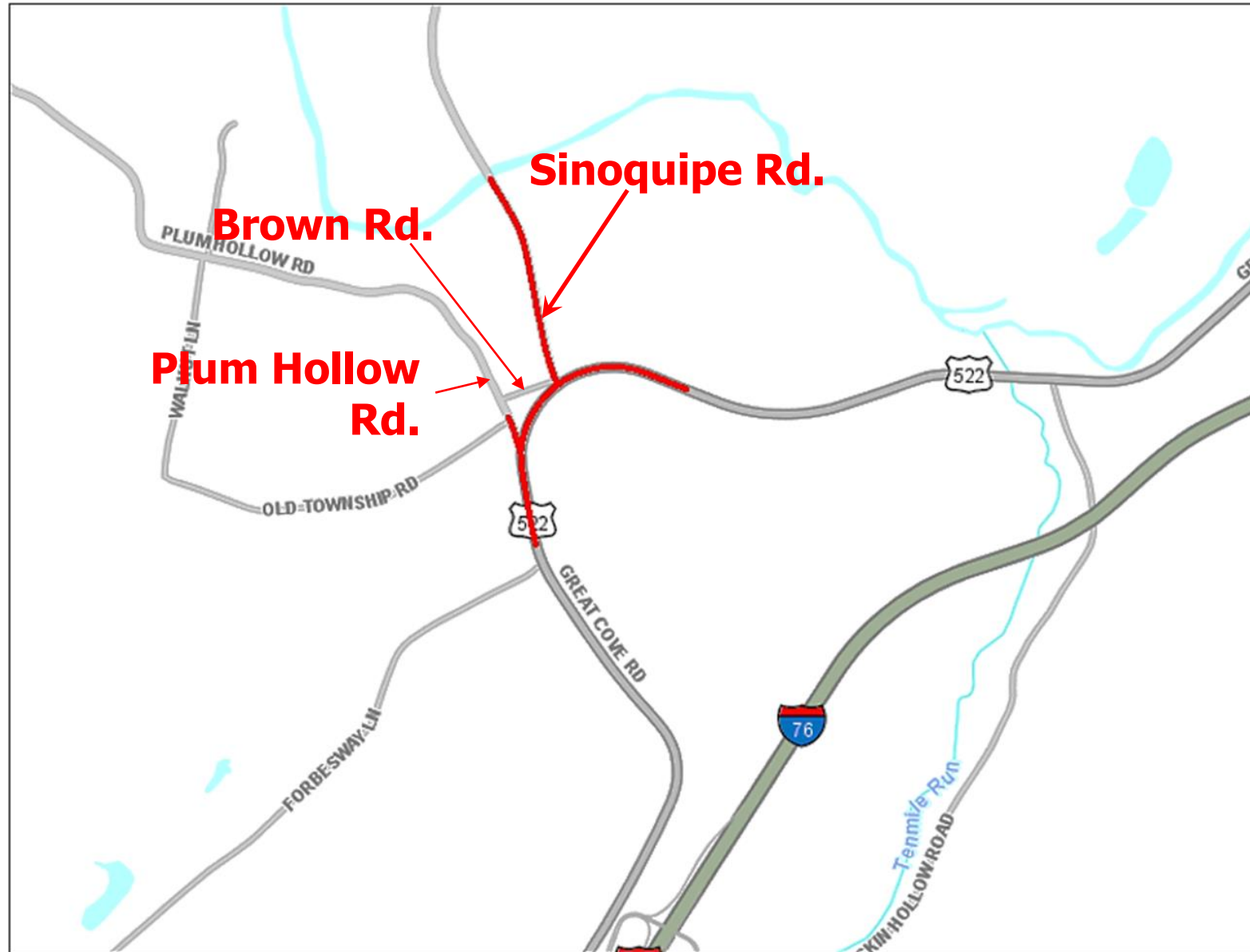


FORT LITTLETON INTERSECTION IMPROVEMENT



- **Project Type:** Safety Improvement
- **Location:** U.S. 522, State Route 1011(Sinoquipe Road), Route 1012 (Plum Hollow Road), and T-433 (Brown Road) in Dublin Township
- **Construction Estimate:** \$1.0 - \$5.0 Million
- **Anticipated Opening Bid:** 1st Quarter 2028

FORT LITTLETON INTERSECTION IMPROVEMENT



FORT LITTLETON INTERSECTION IMPROVEMENT

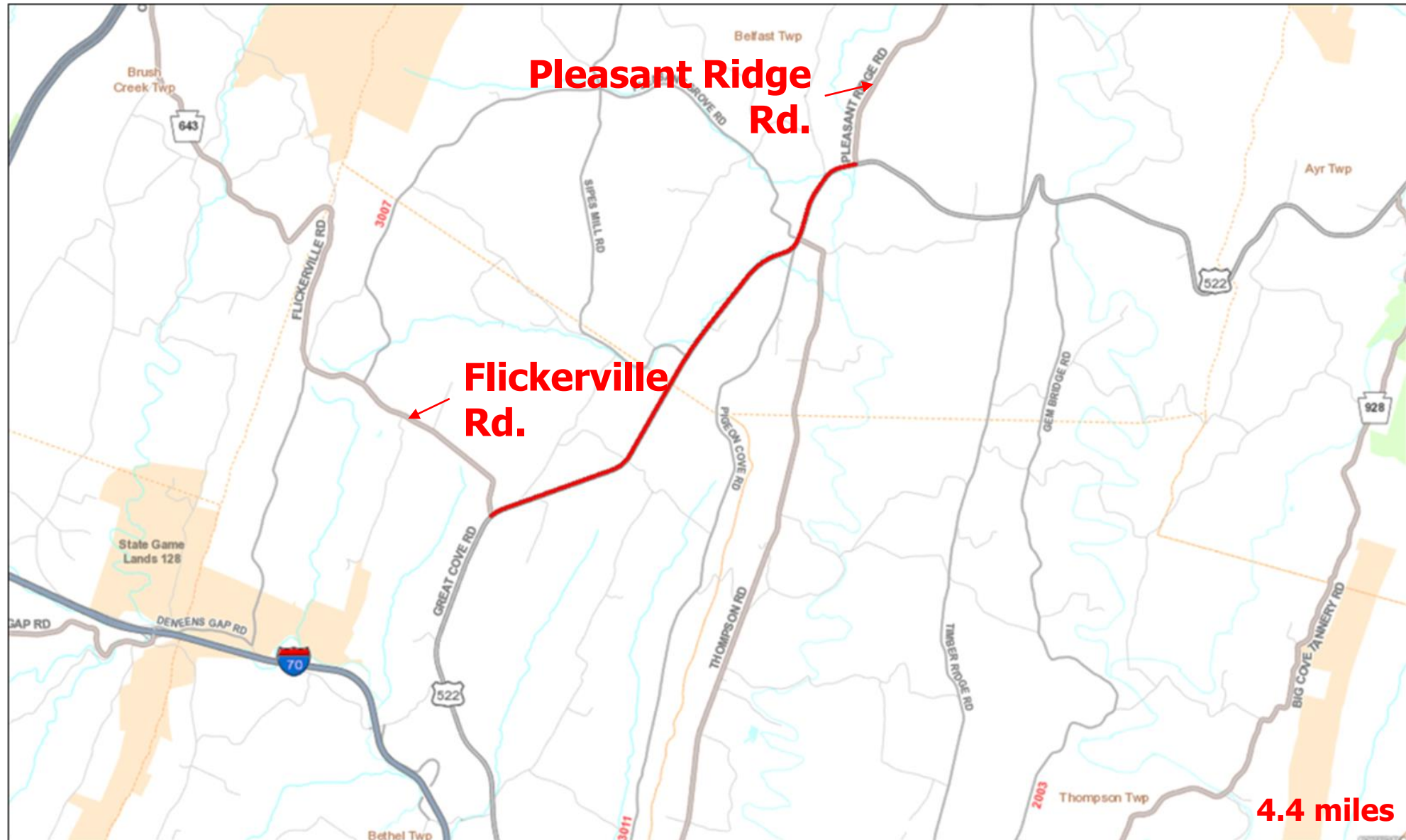


U.S. 522 - DOTT TO NEEDMORE RESURFACING



- **Project Type:** Resurfacing
- **Location:** On U.S. 522 (Great Cove Road) from Route 643 (Flickerville Road) to PA 655 (Pleasant Ridge Road) in Bethel and Belfast Townships
- **Construction Estimate:** \$1.0 - \$5.0 Million
- **Anticipated Opening Bid:** 3rd Quarter 2028

U.S. 522 - DOTT TO NEED MORE RESURFACING



Questions?

