



SR 0267, Section 770

Bridge Street Bridge over Meshoppen Creek

Meshoppen Borough, Wyoming County, PA

Project Description:

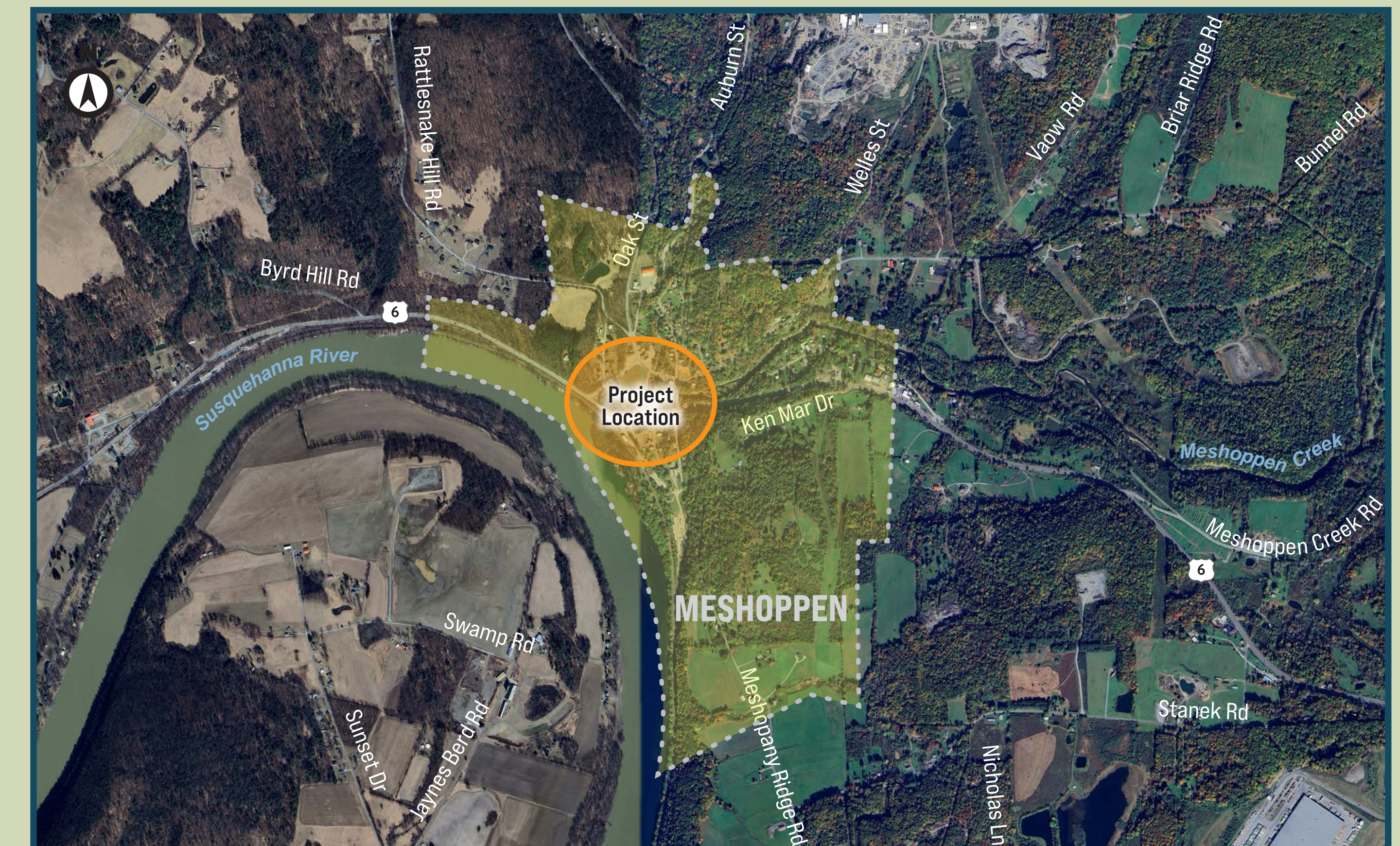
The project involves the SR 267 (Bridge Street) bridge over Meshoppen Creek which is located in Meshoppen Borough, Wyoming County, PA. The existing bridge is a 214-foot long structure three-span structure comprised of two concrete T-Beam approach spans and a main riveted steel through truss span and was constructed in 1934. The existing roadway consists of two 11' lanes with minimal shoulders. The speed limit is currently 25 mph and the average daily traffic is 1,588 vehicles per day with a truck percentage of 16%. The proposed typical section consists of two 11' lanes, two 4' shoulders, and 6' sidewalks. The proposed structure will be a 230-foot long prestressed concrete bulb-tee beam bridge on integral abutments. It will be comprised of two spans with lengths of 115' each. The proposed bridge and roadway will be located at approximately the same location as the existing bridge and roadway. A detour will be needed during construction. Construction is anticipated to begin Summer 2027 and will take 12-18 months to complete.

Purpose:

To provide safe, efficient, and unrestricted vehicular and pedestrian transportation on State Route 267 (Bridge Street) across Meshoppen Creek.

Needs:

- The existing bridge is considered structurally deficient, in poor condition with an overall bridge rating of 4, due to numerous deficiencies identified within the substructure and superstructure.
- SR 267 has a high percentage of truck traffic at 16% but the bridge has two restrictions. The truss has vertical clearance of 13' 5" and structure is posted for the "One Truck at a Time". As a result, for trucks which do not comply to these restrictions, a truck detour to State Route 6 is posted which utilizes a nearby local road west of the bridge (Canal Street).
- The southbound sidewalk along the bridge is currently closed for structural deficiencies forcing pedestrians to cross prior to the structure at poorly marked crosswalks at intersections with deficient sight distances. The bridge provides the most convenient pedestrian connectivity between the north and south sides of the Borough of Meshoppen.



Satellite Imagery of Project Site



Existing Meshoppen Creek Bridge - Looking West



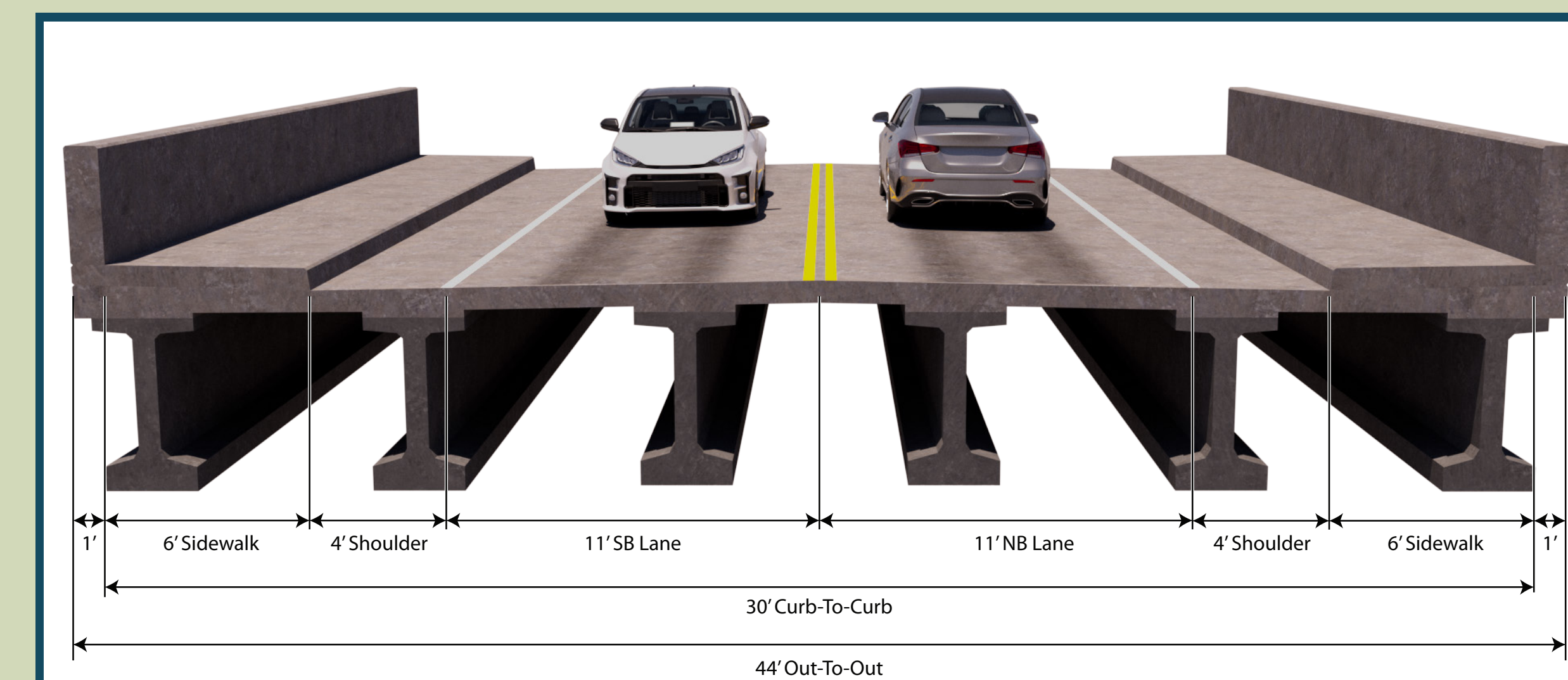
SR 0267, Section 770

Bridge Street Bridge over Meshoppen Creek

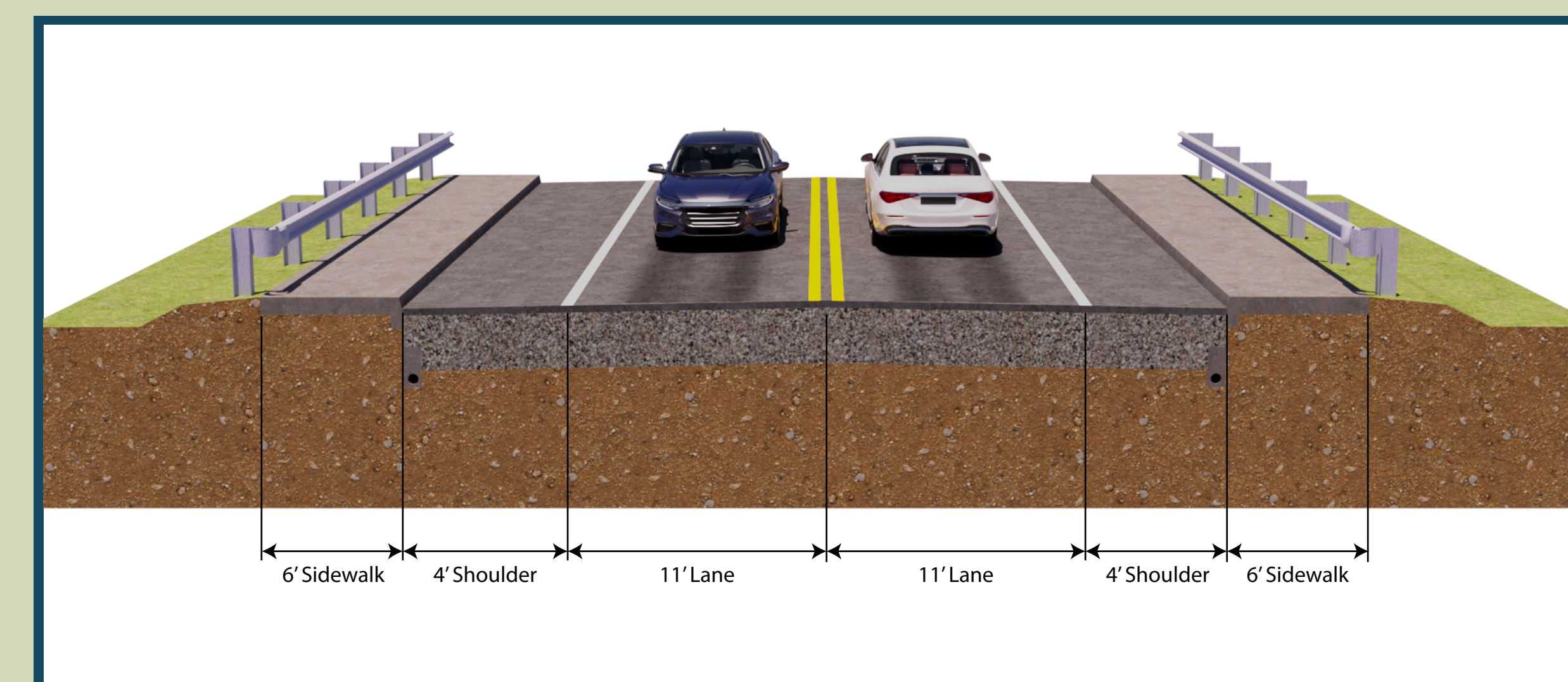
Meshoppen Borough, Wyoming County, PA



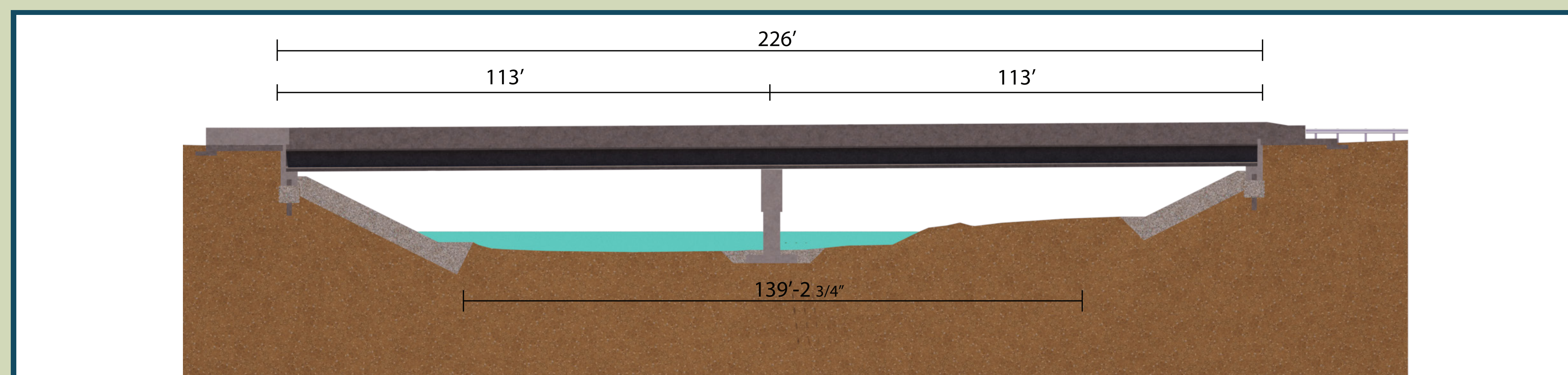
Plan View



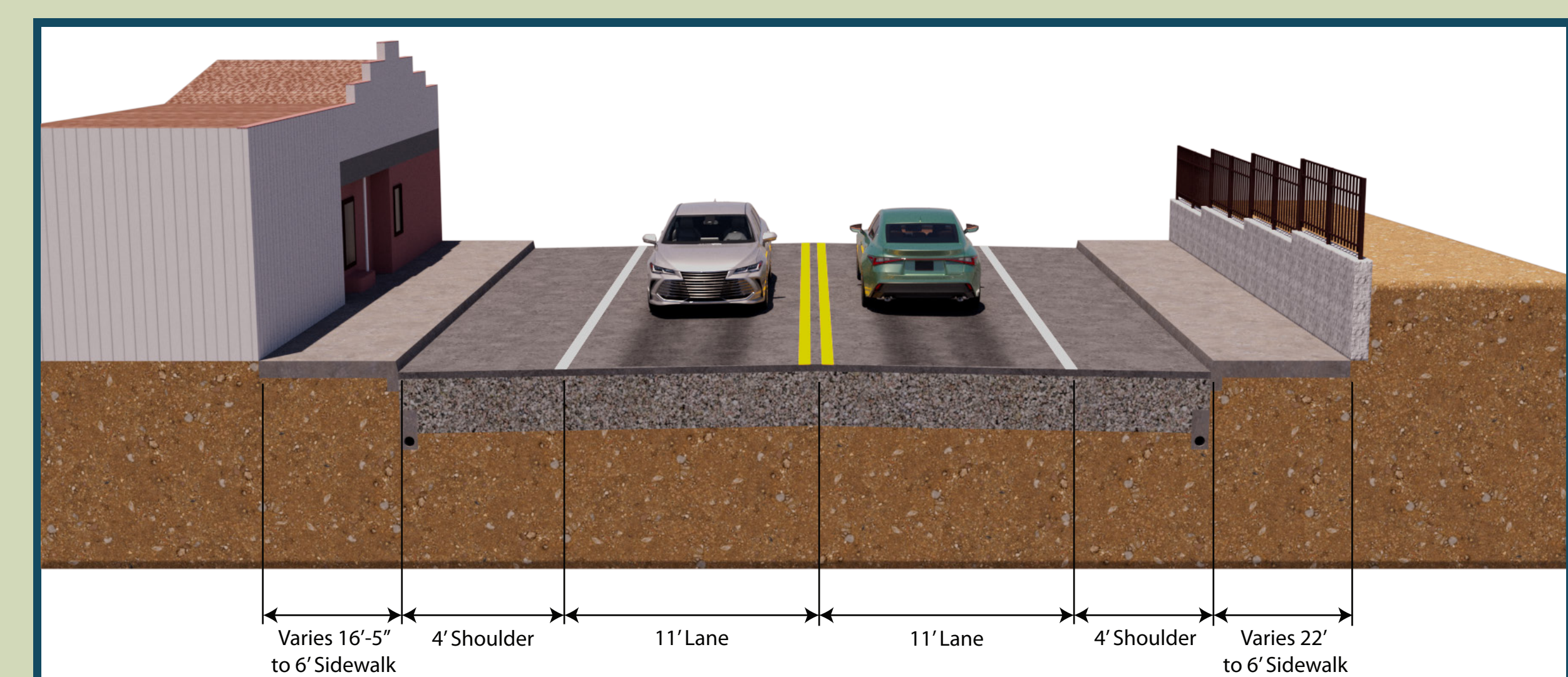
SR 267 Typical Bridge Section



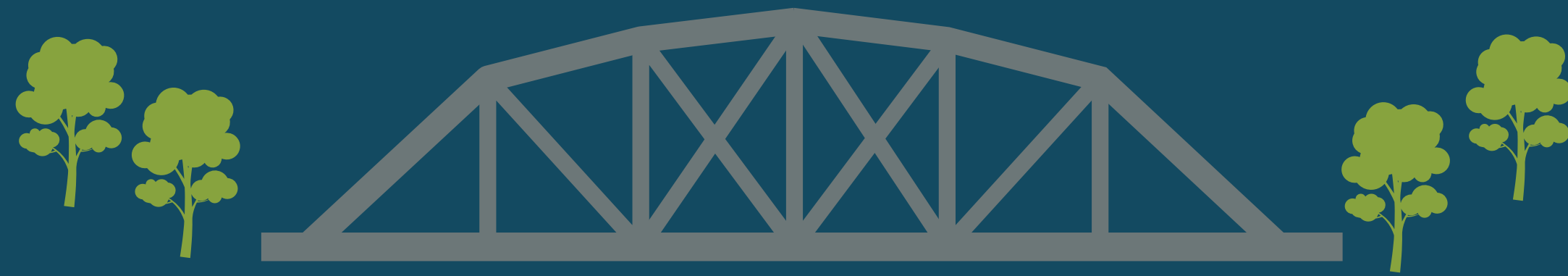
SR 267 Typical Roadway Section
(North of Bridge)



Elevation View



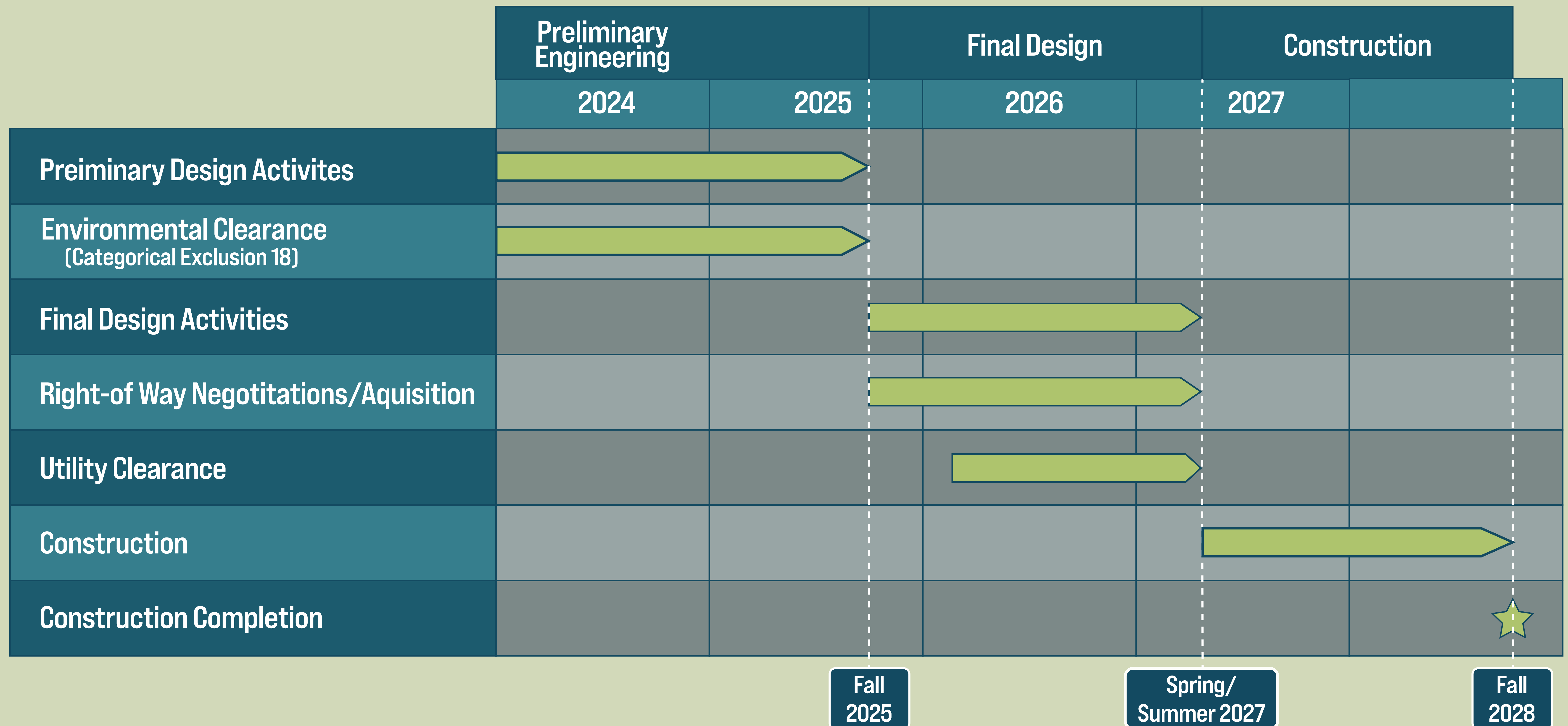
SR 267 Typical Roadway Section
(South of Bridge)



SR 0267, Section 770

Bridge Street Bridge over Meshoppen Creek

Meshoppen Borough, Wyoming County, PA



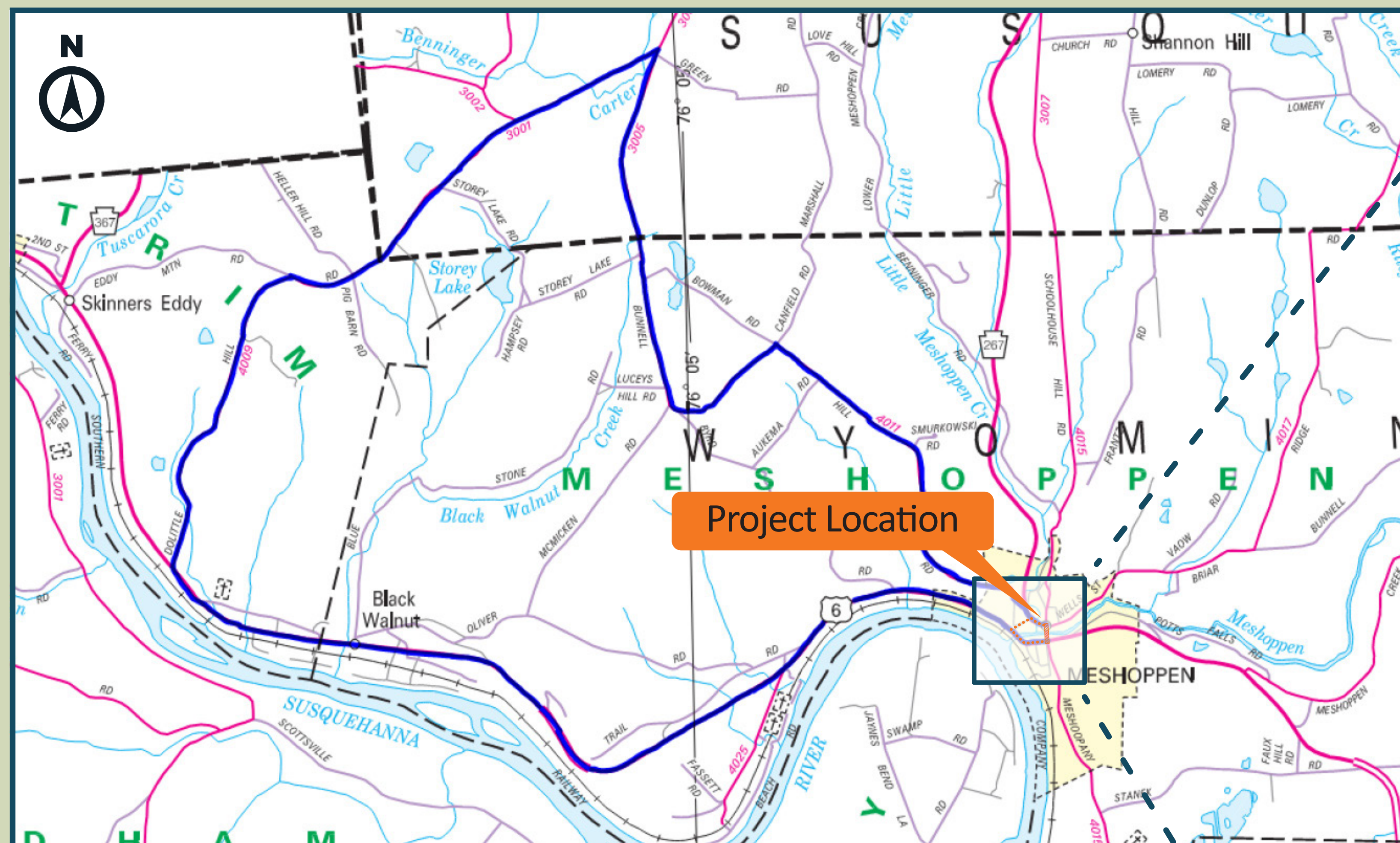
Project Schedule as of June 2025



SR 0267, Section 770

Bridge Street Bridge over Meshoppen Creek

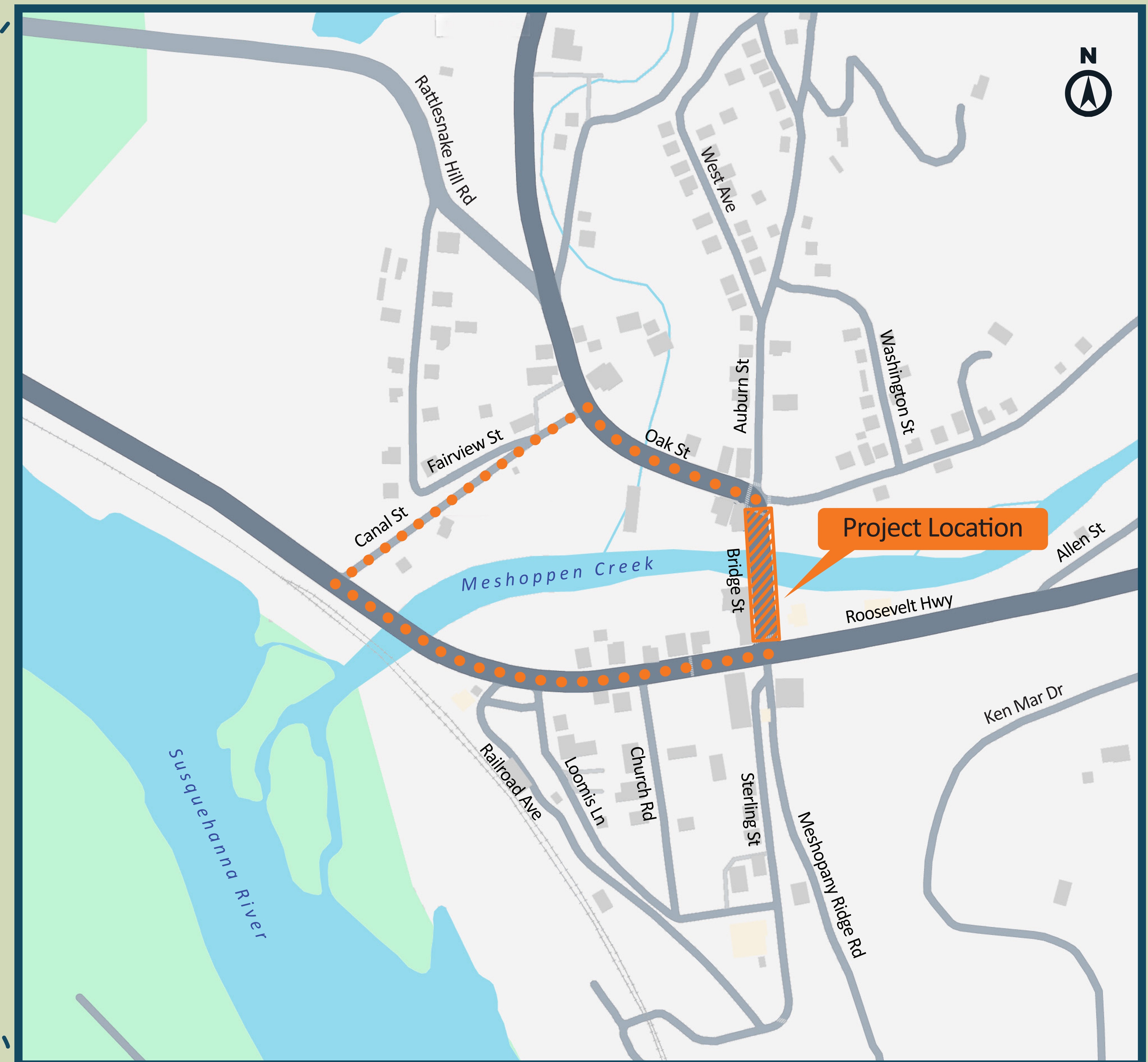
Meshoppen Borough, Wyoming County, PA



*Location Map
not to scale*

Legend

- ● ● Detour Route (Detour Length 0.5 Miles)
- ▨ Work Area



*Proposed Roadway Detour
not to scale*

Note: Project/Detour duration estimated to last approximately 12-18 months.