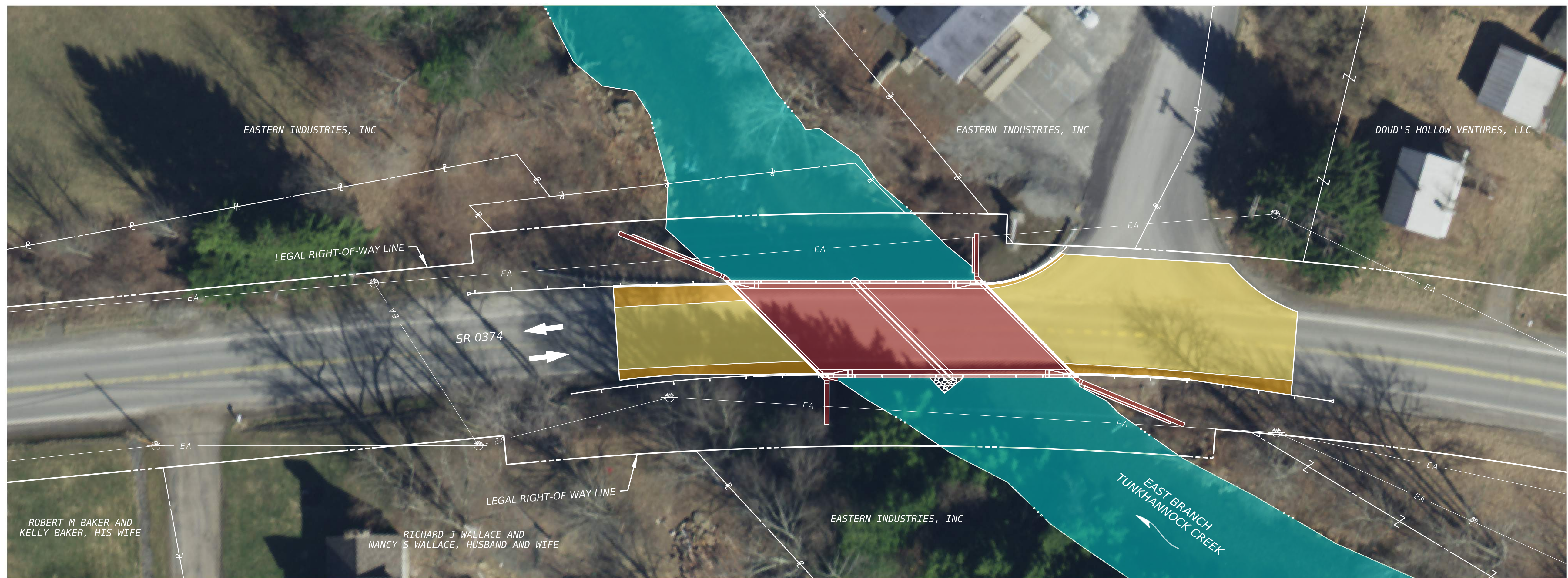
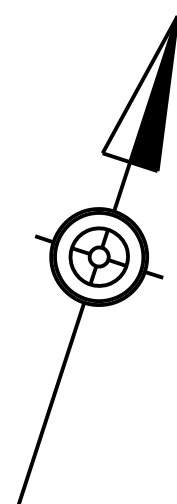


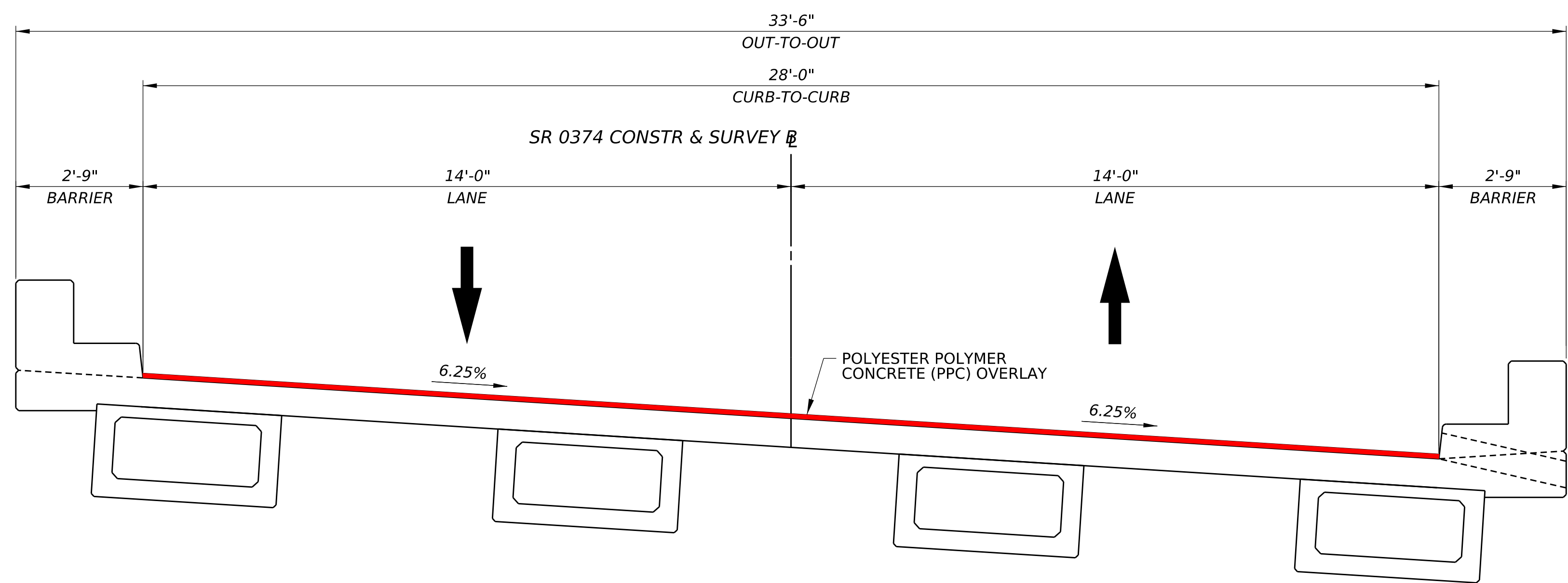
State Route 0374 Section 200 over East Branch of Tunkhannock Creek

Susquehanna County, Pennsylvania



SCOPE OF WORK:

1. MAINTAIN TRAFFIC IN ACCORDANCE WITH THE APPROVED TRAFFIC CONTROL PLAN.
2. INSTALL TIE-BACK ANCHORS AT WING B, WING C, WING D, AND ABUTMENT 2.
3. SEAL JOINTS IN CONCRETE BARRIERS AND AT ABUTMENTS.
4. INSTALL PREFORMED NEOPRENE COMPRESSION JOINT SEAL AT THE PIER DECK JOINT.
5. SCARIFY THE BRIDGE DECK 1 1/4" IN STAGES USING 1/4" MAX PASSES. PERFORM TYPE 2 & 3 DECK REPAIRS PRIOR TO PLACING A 1 1/4" POLYESTER POLYMER CONCRETE (PPC) OVERLAY.
6. REMOVE A PORTION OF THE EXISTING BARRIER AND RAILING, AS INDICATED, AND INSTALL NEW BARRIER TRANSITION RETROFIT.
7. CLEAN AND FLUSH BRIDGE DECK.
8. REPAIR DETERIORATED CONCRETE AND SEAL CRACKS AT BARRIERS, DECK UNDERSIDE, CONCRETE BEAMS, ABUTMENTS, AND PIER.
9. REMOVE DEBRIS WITHIN THE CHANNEL ADJACENT TO THE EXISTING BRIDGE AND PLACE ROCK SCOUR PROTECTION AT THE UPSTREAM NOSE OF THE PIER.
10. INSTALL CONCRETE CURBS AT ALL CORNERS OF THE BRIDGE (ROADWAY ITEM).
11. REPAVE ROADWAY APPROACHES (ROADWAY ITEM).
12. INSTALL NEW GUIDE RAIL AT ALL CORNERS OF THE BRIDGE (ROADWAY ITEM).



PROPOSED TYPICAL SECTION

LEGEND

- | | |
|--|---|
| | BRIDGE REHABILITATION |
| | PROPOSED ROADWAY |
| | PROPOSED SHOULDER |
| | EAST BRANCH TUNKHANNOCK CREEK (NORMAL FLOW) |
| | LEGAL RIGHT-OF-WAY LINE |
| | PROPERTY BOUNDARIES |
| | PROPOSED POLYESTER POLYMER CONCRETE (PPC) OVERLAY |

PRELIMINARY