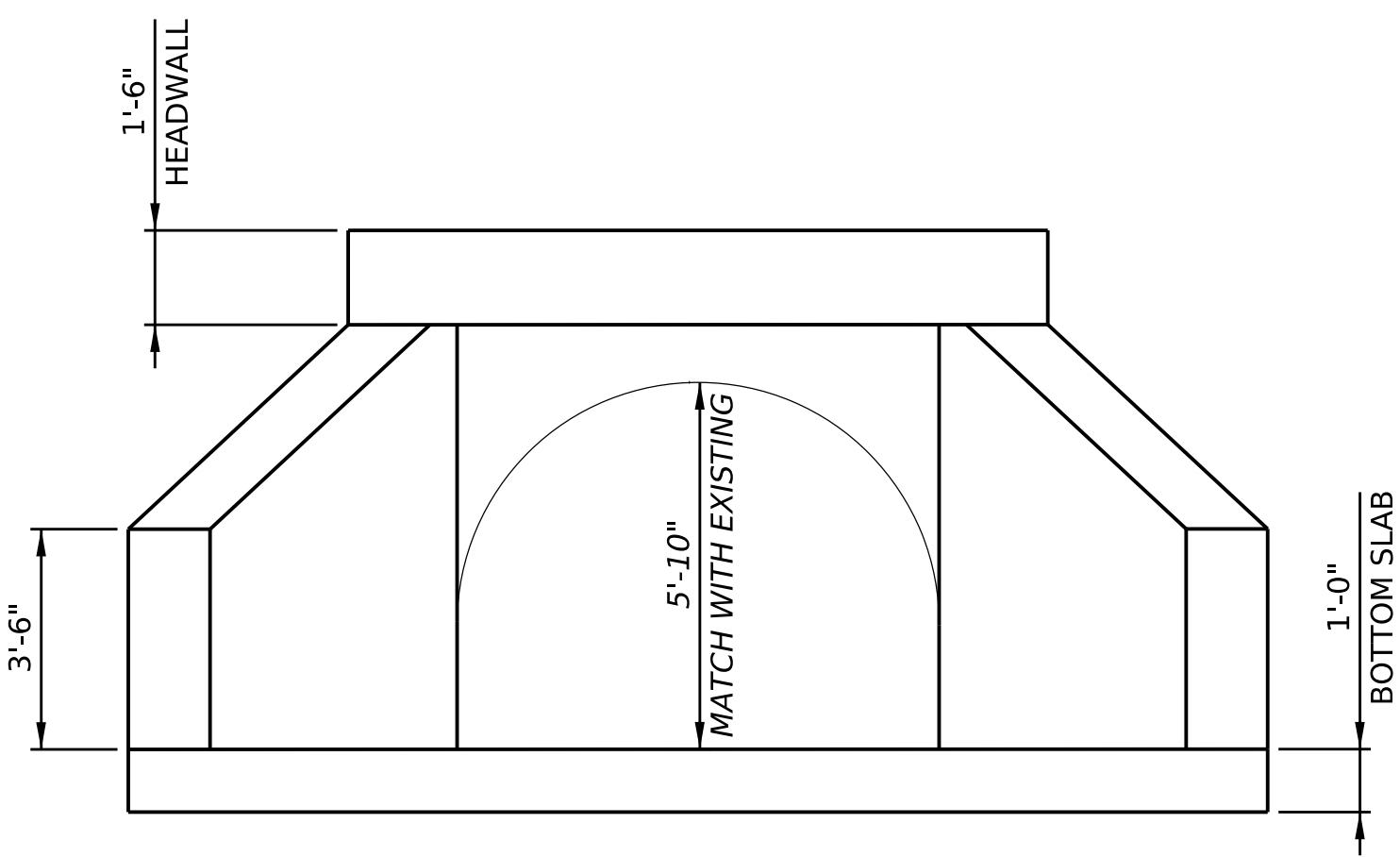
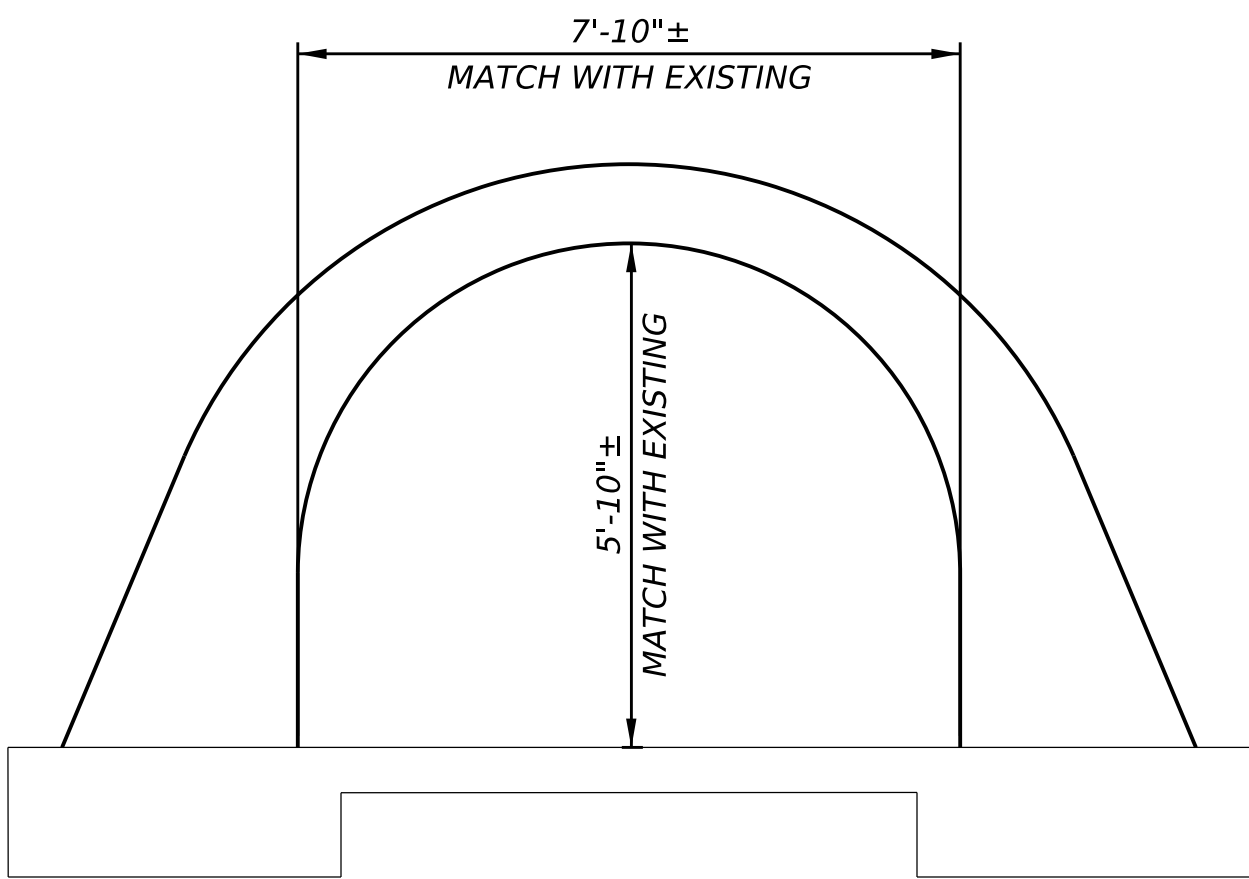


- LEGEND**
- PROPOSED CULVERT END SECTIONS
 - EXISTING PAVEMENT
 - BRANCH TO BALLIARD CREEK
 - ROCK, CLASS R-8, CHOKED WITH R-4 AND STREAMBED MATERIAL
 - PARCEL IDENTIFICATION NUMBER



PROPOSED CULVERT END SECTION

NOT TO SCALE



TYPICAL ARCH CULVERT SECTION

NOT TO SCALE

ANTICIPATED CONSTRUCTION 2027

PRELIMINARY PLAN

SR 0434 SEC 473

PA 434 OVER BRANCH TO BALLIARD CREEK

LACKAWAXEN TOWNSHIP

PIKE COUNTY