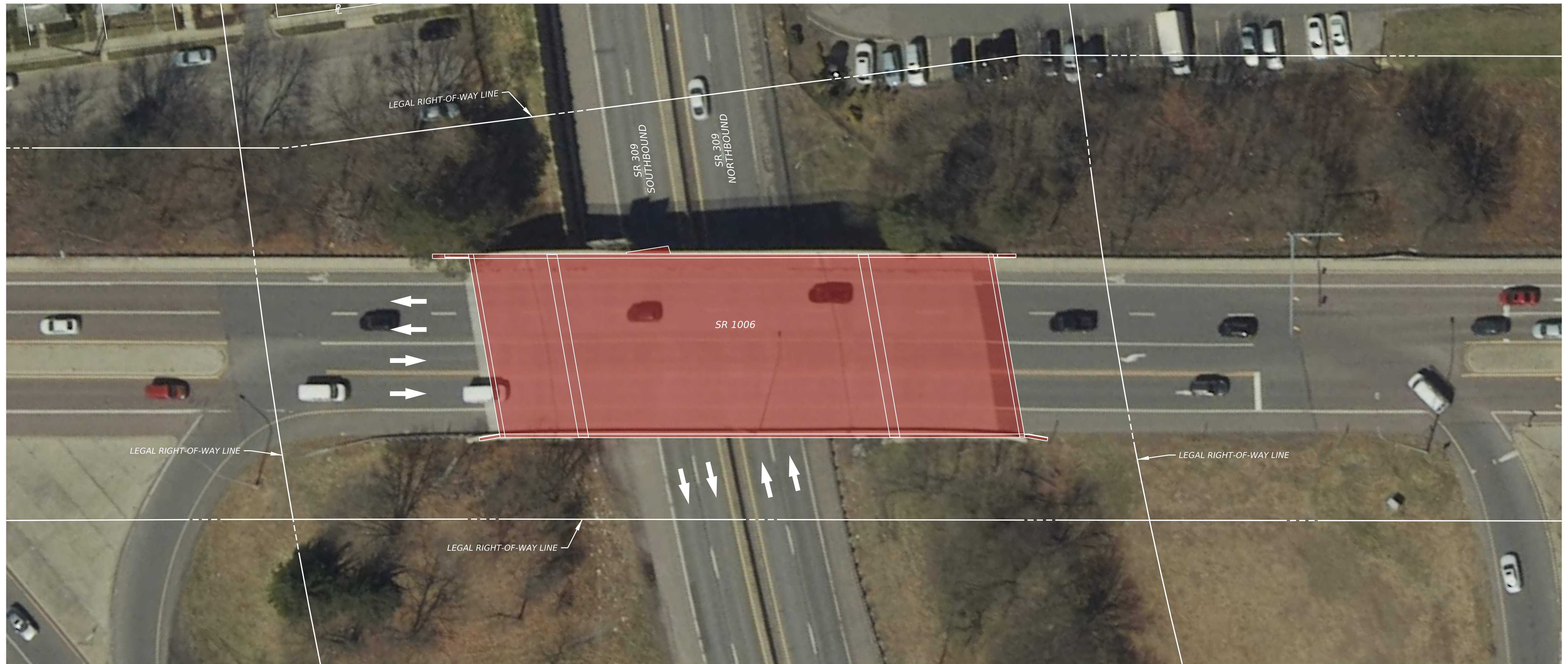



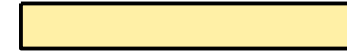

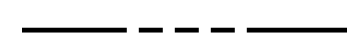
SR 1006 Section PRS Over SR 309 Luzerne County, Pennsylvania



SCOPE OF WORK:

1. MAINTAIN TRAFFIC IN ACCORDANCE WITH THE APPROVED TRAFFIC CONTROL PLAN.
2. REPLACE CONDUIT AT OVERHEAD SIGN.
3. REPLACE ROCKER BEARINGS AND MODIFY PEDESTALS (AS REQUIRED) AT PIER 2 (SPAN 2) (10 TOTAL).
4. REPLACE BENT CROSS FRAME MEMBER IN SPAN 2.
5. PERFORM CONCRETE REPAIRS AT ABUTMENTS AND PIERS.
6. INSTALL NEW GUIDE RAIL AT ALL CORNERS OF THE BRIDGE (ROADWAY ITEM).
7. REPLACE PORTION OF SIDEWALK & CURB AT THE NEAR AND FAR SIDES OF THE BRIDGE (ROADWAY ITEMS).

LEGEND

-  BRIDGE REHABILITATION
-  PROPOSED ROADWAY
-  PROPOSED SHOULDER
-  LEGAL RIGHT-OF-WAY LINE

PRELIMINARY

