

# 2025 PENNDOT CONNECTS MUNICIPAL OUTREACH



MARCH 2025



1

## THIS SESSION IS BEING RECORDED.

This Session is being recorded

By participating in this session, you are consenting to the recording, retention, and use of this session.

Additionally, as a reminder, by asking a question verbally you are also consenting to the recording, retention, and use of your statements.



2

## WHAT IS PENNDOT CONNECTS?

A holistic approach to planning to...

- Support a community's vision.
- Increase efficiency and cost-effectiveness.
- Ensure the best allocation of resources.

PennDOT and planning partners invest in communities by engaging local governments prior to developing project scopes and cost estimates to discuss details for each project.

## VALUE OF MUNICIPAL PARTICIPATION

- Municipalities can communicate the transportation needs of their community – such as those related to safety, mobility, and the environment – now and in the future.
- At the beginning of the planning process (e.g., bicycle, pedestrian, transit, freight, utilities, etc.).
- In cooperation with planning partners.
- To identify creative solutions to sustain and expand mobility in their community.

The outcome of this partnership will deliver projects that **improve economic competitiveness, access to work, and overall quality of life** for residents and visitors to their community.

## POLL

- How often has your municipality used PennDOT Connects in the past?



Or  
Menti.com  
**2379 7436**



5

## SESSION OBJECTIVES AND OVERVIEW

To engage participants in an exchange of ideas that empowers communities through collaborative transportation planning, and helps municipalities access the wide variety of PennDOT Connects Municipal Resources.

This session will highlight these primary focus areas:

- Connects Municipal Resources
- Introduction to One Map and the Local Bridge Inventory Tools
- "Listening" for Process Improvements



6

# INTRODUCTIONS

## Panelists and Facilitator

- Name
- Organization



7

# PUBLIC OUTREACH CAMPAIGN

2025 Public Outreach  
Campaign for the 2027  
12-Year Transportation  
Program

<https://survey.talkpatransportation.com/#/Survey>

Tool Kit To Share Info:

<https://talkpatransportation.com/toolkit>



TELL US  
ABOUT YOUR  
**TRANSPORTATION NEEDS**

**TAKE THE SURVEY**  
March 3 - April 30

 Pennsylvania  
Department of Transportation

 State Transportation  
Commission

8

# PENNDOT CONNECTS MUNICIPAL RESOURCES OVERVIEW



9

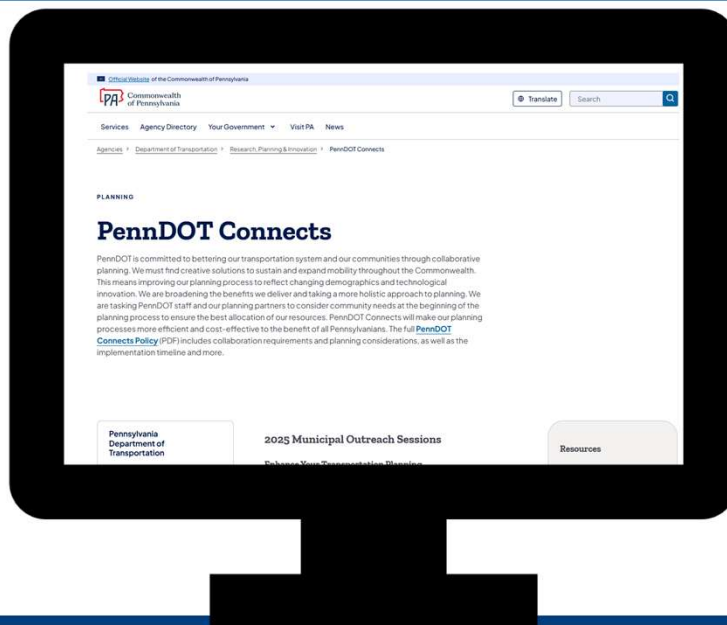
## PROGRAM RESOURCES

- On-Demand Online Training
- Transportation and Land Use Planning Assistance
- Training Courses and Workshops
- Drop-Ins (recorded)
- Newsletter/Tech Sheet
- PennDOT Connects Webpage



10

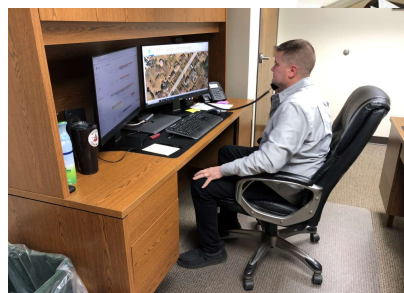
# PENNDOT CONNECTS WEBPAGE



11

## TRANSPORTATION AND LAND USE PLANNING ASSISTANCE

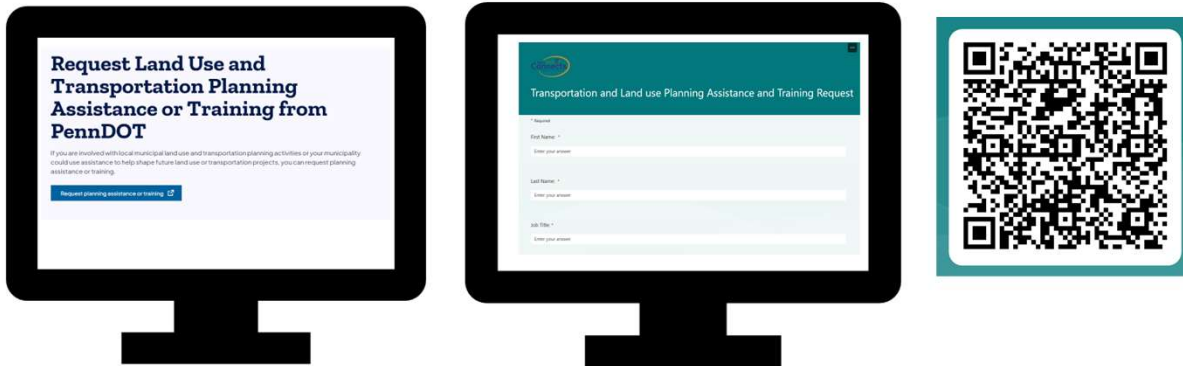
- Phone/Email questions answered by planning experts
- Onsite half-day session with planning experts



12

# REQUESTING ASSISTANCE

- Visit the [Land Use and Transportation Planning Assistance for Training from PennDOT](#) webpage.
- Fill out the [Assistance and Training Request Form](#)



13

# ASSISTANCE EXAMPLES

- **Local Road Safety Plan**
  - South Whitehall Twp., Lehigh Co.
  - Shiremanstown Borough, Cumberland Co.
  - West Pikeland Twp., Chester Co.
  - Dover Twp., York Co.
- **Road Safety Audit**
  - Lancaster Twp., Lancaster Co.
  - Butler Twp. & Cass Twp., Schuylkill Co.
  - Catasauqua Boro, Lehigh Co.
- **Pedestrian Safety Audit**
  - Borough of Hummelstown, Dauphin Co.
  - Darby Twp., Delaware Co.
  - Salisbury Twp. Lehigh Co.
- **Safe Streets for All Action Plan**
  - City of Allentown, Lehigh Co.
- **Active Transportation Plan**
  - South Whitehall Twp., Lehigh Co.
- **Benefit Cost Analysis**
  - North Central Planning
- **Main Street Safety Assessment**
  - Shiremanstown Borough, Cumberland Co.
- **Traffic Calming Policy**
  - South Whitehall Twp., Lehigh Co.
- **Local Share Account Statewide Grant App.**
  - West Pikeland Twp., Chester Co.
- **Multimodal Grant Application Review**
  - Jonestown Borough, Lebanon Co.
- **GIS**
  - City of Hazleton, Luzerne Co.
  - Shohola Twp., Pike Co.
  - Delaware Twp., Pike Co.
  - Palmyra Twp., Pike Co.
  - Womelsdorf Borough, Berks Co.



Dover Twp. working on their Local Road Safety plan

14



# ASSISTANCE FLYER



## Request Free Planning Assistance

Are you involved with municipal land use and transportation planning activities? Could your municipality use assistance to help shape a future project, advance community and transportation planning, and access funding? Act now to take advantage of this free assistance.

PennDOT Connects offers free assistance to municipalities to better integrate local land use, development, and transportation goals into the state transportation planning process.

### What is planning assistance and who is it for?

Any municipal staff member, government official, or planning partner is eligible to request free assistance for land use and transportation planning or project development.

**Types of Planning Assistance:** Depending on the nature of a request, municipalities will receive assistance via email or phone to supply technical resources or know-how. In selected cases, an on-site visit may be necessary to facilitate face-to-face discussion and collaboration. Assistance can be requested via the PennDOT Connects Municipal Request form, by email at [paconnects@pa.gov](mailto:paconnects@pa.gov), or by calling 717-710-2090.

**1. Phone/Email Assistance:** Phone and email assistance offers prompt replies to questions about guidance documents, planning tools, best practices, success stories, funding opportunities, PennDOT forms, policies, processes, and standards, and planning partner contacts.

**2. On-Site Assistance:** With on-site assistance, municipalities have the opportunity to work with a PennDOT Connects expert on a more detailed request specific to their community and transportation project planning and programming issues.

The technical expert will visit on-site and meet with the municipal officials, associated stakeholders, and meet with the municipal officials and associated stakeholders at a half-day workshop-style meeting.

Relevant PennDOT District planners and planning partners from the local Metropolitan or Rural Planning Organization are invited to participate in the site visit.

Support for on-site assistance could include guidance and facilitation on addressing planning and safety issues, presentation of research on best planning practices, assistance with specific planning and design-related issues, and/or support in following planning regulations to help begin or move a project forward.

After the meeting, the PennDOT Connects technical support expert will prepare a report to document the resources and assistance provided.

PennDOT and its Metropolitan Planning Organization (MPO) and Rural Planning Organization (RPO) planning partners have a long-standing relationship jointly preparing transportation studies, plans, and programs to make the best transportation project investments possible with available resources.

This strategic alliance is one of even greater importance for PennDOT Connects implementation. Together, the MPO/RPO planning partners and PennDOT can effectively collaborate and communicate with municipalities — and other community stakeholders (e.g., transit agencies, economic development agencies, etc.) — to improve transportation system performance and achieve more livable communities.

The collaborative effort of municipalities, MPO/RPO planning partners, and PennDOT is key to ensuring that opportunities to improve transportation and communities are realized.

MPO/RPO contacts can be found at [http://www.penndot.gov/ProjectDev/Programs/Planning/Pages/MPO-and-RPO-Contacts\\_List.aspx](http://www.penndot.gov/ProjectDev/Programs/Planning/Pages/MPO-and-RPO-Contacts_List.aspx).

### What type of assistance is available?

Any question related to transportation planning, project development, or project delivery.

To help, PennDOT Connects provides the following key categories (sample questions are provided for each category).

- 1. PennDOT Connects General Information**
  - What is the project initiation form?
  - What state road projects are planned for neighboring municipalities?
  - What projects in my surrounding region are on the Transportation Improvement Program (TIP)?
- 2. Community Character**
  - What plans do we need to have in place to prepare for future road projects that might impact our community's sense of place?
  - What type of data do we need to collect to support a local priority of walkability?
- 3. Multimodal Transportation**
  - How can we better plan for sidewalk and bike path expansion? How do we get started with this process?
  - What is the best way to control access to nonconforming uses/businesses and improve safety in our downtown business district when sidewalks are added?
- 4. Improving Mobility and Efficiency**
  - What can be done to better manage access for locally generated traffic along key highway corridors?
  - How do we reclaim our Main Street when our current roadway system emphasizes mobility (for cars) over accessibility?
- 5. Improving Safety**
  - How can we incorporate safer pedestrian crossings as the main state road undergoes repaving? Is there funding available to pay for safety enhancements?
  - How do we moderate driving behavior and address safe walking to schools to improve safety on state routes within our community?
- 6. Funding**
  - We need help in developing a funding strategy to upgrade our curbs and sidewalks. How do we ensure early coordination of maintenance projects scheduled by PennDOT to address ADA design at the intersections of local and state routes?
  - What funding resources are available to improve bike accessibility?
  - We are looking at a funding, but don't know where to start. What resources are available?
  - We have completed a funding application. How can we make our application more competitive?
- 7. Protecting Natural Resources**
  - What can be done to preserve key areas eventually needed for public purposes, such as parks, wetland protection, or new roadways?
- 8. Accommodating Growth and Redevelopment**
  - What techniques can be used to manage growth around a planned highway interchange?
  - How can our municipality use the PennDOT Highway Occupancy Permit (HOP) process to plan for growth and implement access management practices?
- 9. Economic Development**
  - What is the best way to coordinate with PennDOT on a Main Street Program?
  - Is there funding available to get us started with planning and implementing a Main Street Program?
- 10. Stormwater Management**
  - We are a municipal separate storm sewer system (MS4) community and value our stormwater as a natural resource. What is the best way to introduce green infrastructure into our policy and regulations?

For more information:  
717-710-2090 or [paconnects@pa.gov](mailto:paconnects@pa.gov)



2



Pennsylvania  
Department of Transportation

15

# ONE MAP DEMONSTRATION



Pennsylvania  
Department of Transportation

16

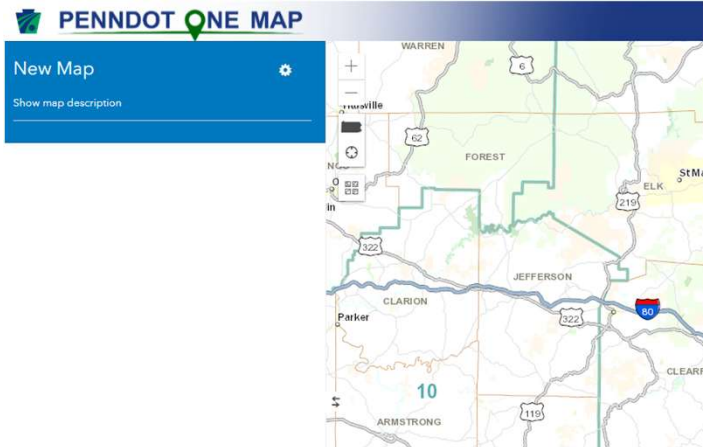


# ONE MAP

## What is One Map?

- Geographical Information System (**GIS**) – web application
- Open to the **public**

<https://gis.penndot.gov/onemap>



17

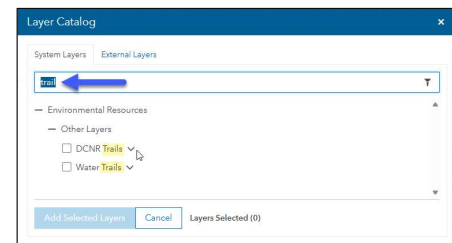
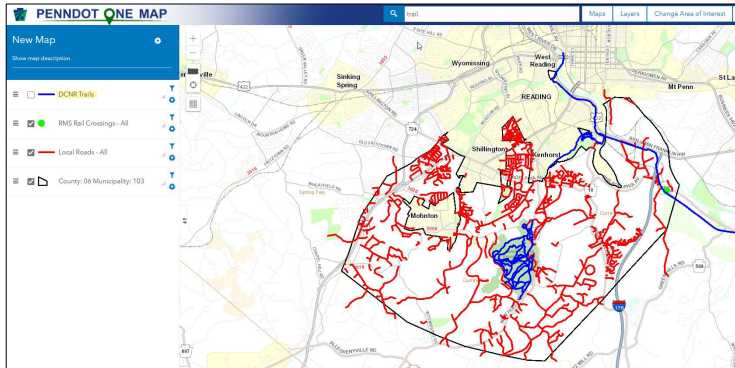
# USES FOR ONE MAP

- Easy to use “right out of the box” with map templates
  - **TIP map** – explore current and planned Transportation Improvement Program projects in your area
  - **HOP map** – view issued permits on state routes
  - **Environmental Screening map** – see environmentally sensitive areas that may need to be planned around

18

# USES FOR ONE MAP

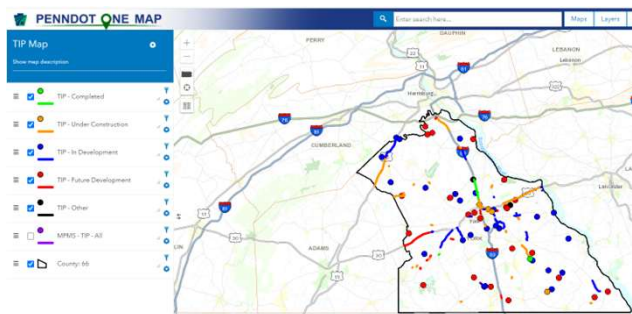
- Project planning
  - Wide range of data layers available with a few clicks
  - Simple to search and customize



19

# WHY USE ONE MAP?

- To make custom maps to fit your specific needs
- Requires little or no previous GIS experience
- Simple to search and customize
- Add a template map
- Create a personal map
- Add pre-programmed layers
- Add personal layers
- Locate data
- Import data with a URL
- Exporting any layer to an Excel data table
- Street View
- Video Log
- Navigate map
- Filter/Query
- Update layer title
- Change symbology
- Saving and printing a map
- Export a map



20

# WHAT DATA IS ON ONE MAP

## Layers

- Transportation Improvement Plan (TIP) Projects
- Traffic Counts-Annual Average Daily Traffic (AADT)
- Bridge data
- Highway Occupancy Permits (HOP)
- Bike Routes
- Environmental Resources: HQ/EV Steams
- Facilities: Hospitals, Fire Stations



To see a full list of the layers go to the layers tab on One Map.

21

# DEMONSTRATION

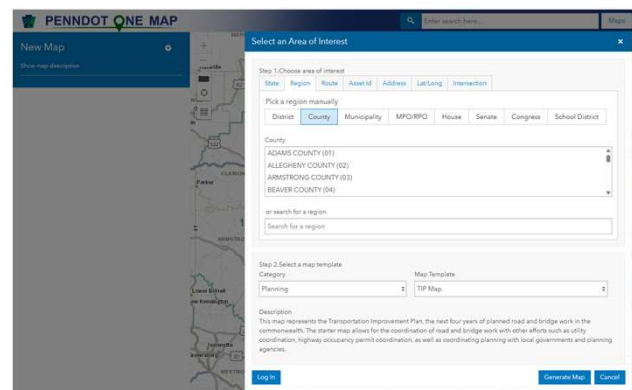
Step 1: Choose an area of interest

Step 2: Select a map template

Step 3: Add additional layers  
using the layer catalog

Step 4: Filter/query layer data

Step 5: Export data/save map



One Map Guide Lunch and Learn

Video: <http://gis.penndot.gov/onemap/static/OneMap%20Guide.mp4>

22

## ONE MAP RESOURCES

One Map Main Page:

<https://gis.penndot.gov/onemap>

One Map Guide Lunch and Learn Video:

<http://gis.penndot.gov/onemap/static/OneMap%20Guide.mp4>

One Map What's New:

<https://gis.penndot.gov/onemap/static/whatsNew.html>

One Map Help:

<https://gis.penndot.gov/onemap/static/webHelp/Welcome.htm>

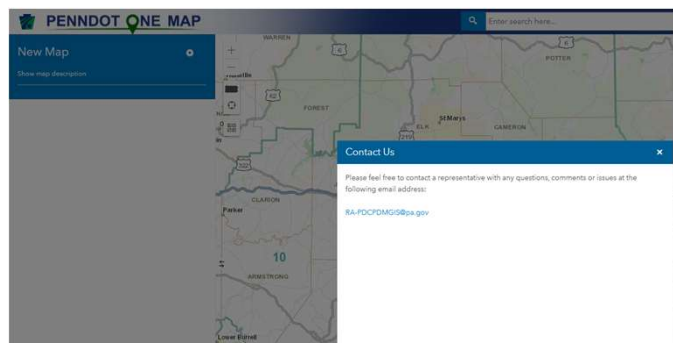
23

## CONTACT US

PennDOT GIS Resource Account

[RA-PDPENNDOT\\_GIS@pa.gov](mailto:RA-PDPENNDOT_GIS@pa.gov)

PA Department of Transportation  
Bureau of Planning and Research  
Geographic Information Division  
400 North Street 6th Floor M-East  
Harrisburg, PA 17120



24

## PLANNING ASSISTANCE

### Want to know more?

PennDOT Connects Municipal Outreach can provide your municipality with one-on-one One Map training or assistance!

#### **PennDOT Connects Webpage**

[Request Land Use and Transportation Planning Assistance or Training from PennDOT](#)

#### **PennDOT Connects Training and Assistance**

<https://www.pa.gov/services/penndot/apply-for-land-use-and-transportation-planning-assistance-or-training-from-penndot.html>

[paconnects@pa.gov](mailto:paconnects@pa.gov)

717-710-2090



25

## LOCAL BRIDGE INVENTORY AND YOUR LOCAL STRUCTURES



26

## LOCAL BRIDGE INVENTORY – WHAT?

### Local Bridge $\geq 20$ feet

Must be inspected

Federal Government requires reports submission to FHWA per NBI standards

### Local Structure $< 20$ feet

Recommended that these should be inspected for safety

### Local Bridge Inventory

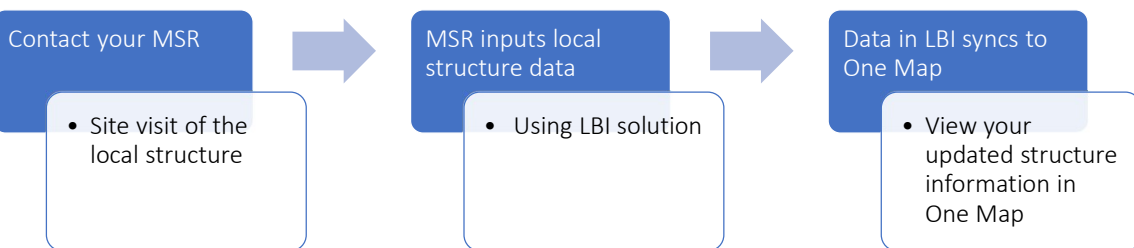
Is for local structures  $< 20$  feet



Local structure in Jackson Township, York County that was replaced in 2023.

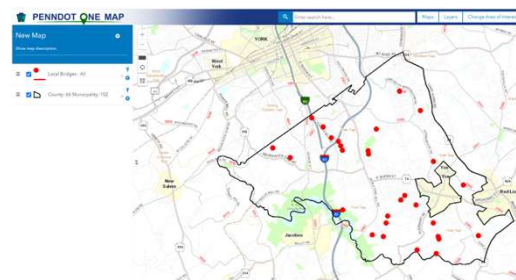
27

## LOCAL BRIDGE INVENTORY – HOW?



Provide better data to stakeholders:

- PennDOT
- MPO/RPO
- County Planning
- Municipal



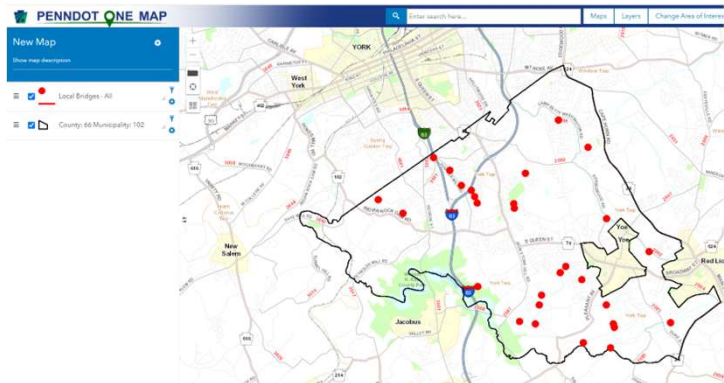
28



# LOCAL BRIDGE INVENTORY – WHY?

## Why is this important?

- By leveraging LBI and One Map local municipalities have an increased chance of getting structure maintenance activities completed through the TIP.
- Provide county or district with information on assets. Allowing for better planning and safety.
- PennDOT could provide archived inspection reports more accurately. Along with baseline information.

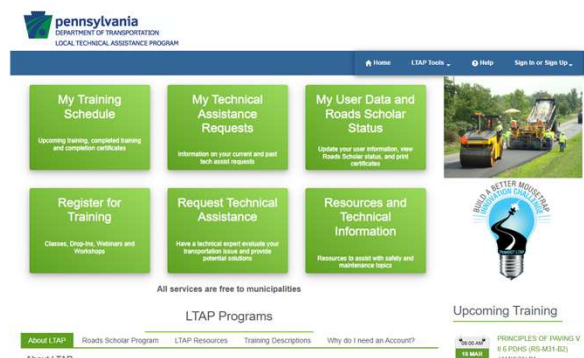


29

# LOCAL BRIDGE INVENTORY – RESOURCES

## LTAP Tech Sheets

- #171 Conditions of Locally Owned Bridges, Part 1
- #172: Inspection and Assessment of Locally Owned Bridges, Part II
- #173: Maintaining Locally Owned Bridges, Part III



<https://gis.penndot.pa.gov/ltap/>

LTAP Tech Sheets are under "Resources and Technical Information."

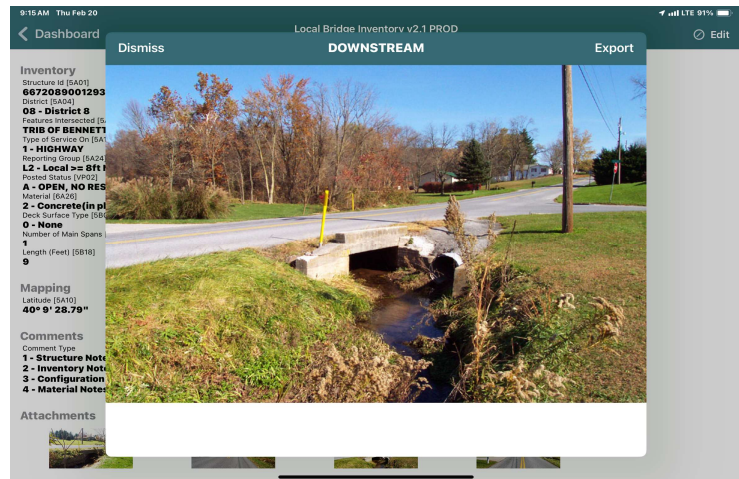
30



## LOCAL BRIDGE INVENTORY – THE FUTURE

### Municipalities Can Update Data for:

- Local structures that are not required for submission to FHWA per NBI standards
  - <20 feet Structure Length (*BMS field 5B18*)
  - Owner Code '<>1' (*BMS field 5A21*)
  - Reporting Group L2 & L3 (*BMS field 5A24*)

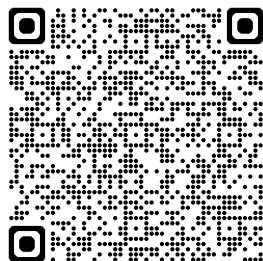


Structure photos will be available in future enhancements in One Map.

31

## LOCAL BRIDGE INVENTORY – GET INVOLVED

- Check your local bridge data in One Map
- Updates Needed? Reach out to your [Municipal Services Representative](#).



32

## CONTACT US

Matthew Long  
Transportation Planning Manager  
[Matlong@pa.gov](mailto:Matlong@pa.gov)

PA Department of Transportation  
Center for Program Development and Management  
Statewide Planning Division  
400 North Street 6th Floor  
Harrisburg, PA 17120



33

## “LISTENING” SESSION



34

## REGISTRATION QUESTION REVIEW



35

## CATEGORIES OF LISTENING

Awareness and  
Education of  
Connects Program

Municipality  
Engaging  
Connects Program

Collaboration  
among Planning  
Partners

Connects Process  
and  
Documentation

36

## POLLS AND VOTING

"List one idea that you feel could improve..."

1. Awareness and Education of Connects Program
2. Municipality Engaging Connects Program
3. Collaboration among Planning Partners
4. Connects Process and Documentation



Or  
Menti.com  
**2379 7436**

37

## DEBRIEF POLL RESULTS



38

## FINAL POLL

- Based on your knowledge of PennDOT Connects, distribute your 100 IMPROVEMENT points across the four categories.



Or  
Menti.com  
**2379 7436**



39

## PENNDOT CONNECTS

### PennDOT Connects

<https://www.pa.gov/agencies/penn-dot/research-planning-and-innovation/penn-dot-connects.html>



Phone: 717-710-2090

Email: [PAConnects@pa.gov](mailto:PAConnects@pa.gov)

### Municipal Resources

<https://www.pa.gov/services/penn-dot/apply-for-land-use-and-transportation-planning-assistance-or-training-from-penn-dot.html>



40

# SESSION EVALUATION

2025 Municipal Outreach  
Evaluation Form



Use the QR code  
or this [link](#) to the  
evaluation.