

2025 Transportation Alternatives Set-Aside Statewide Application Round

Welcome and Opening Remarks

**Pennsylvania Department of Transportation
Center for Program Development and Management**

•Please be advised that this meeting is being recorded for future use and sharing.

HOUSEKEEPING



Questions must be entered into the chat box

- Answers will follow at end of presentation
- All questions will be part of a Q&A document



Information will be available on Transportation Alternatives (TA) Set-Aside website after presentation:

- PowerPoint presentation
- Recording of presentation
- Q&A for all questions received during presentation



PRESENTATION OVERVIEW

- TA Set-Aside Background
- Guidance and Procedures Document
- Eligibility
 - Projects and Sponsors
- Funding
- TA Set-Aside Website
- Application Process
 - Application Review
- Application Timeline
- Project Review and Selection
- Requirements for Selected Projects



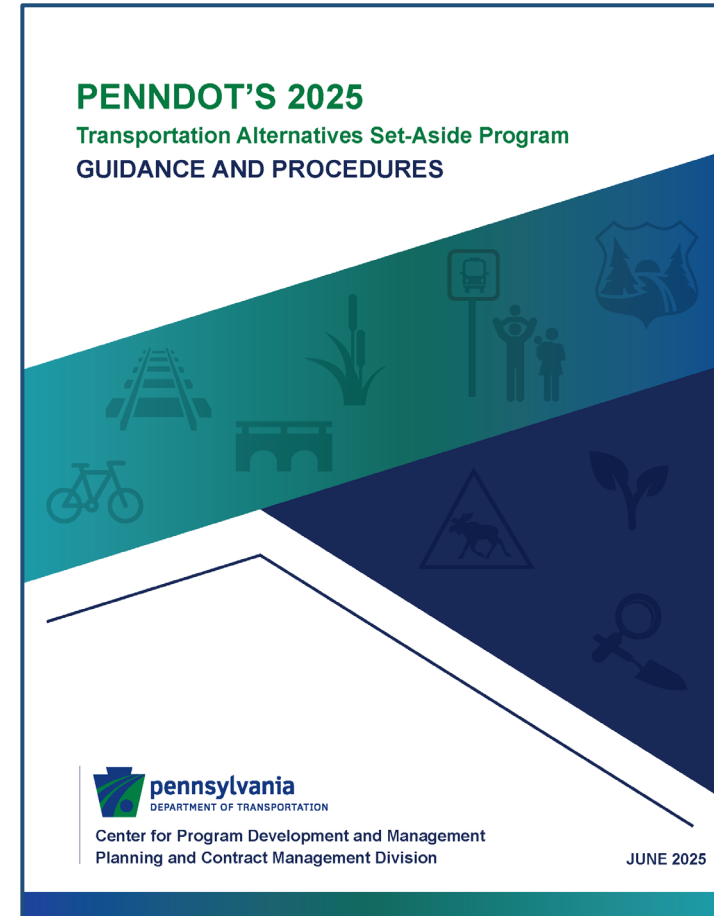
TA SET-ASIDE BACKGROUND

- Infrastructure Investment and Jobs Act (IIJA) of 2021
 - Continuation of TE/TAP Legacy Programs
- Reimbursement Program
- 100% Federal Construction Funding
 - Including construction inspection



PROGRAM GUIDANCE AND PROCEDURES

- Revised document for 2025 funding round
- Available on TA Set-Aside webpage
- Document provides valuable information
 - Project eligibility
 - Sponsor eligibility
 - Application process
 - Requirements for selected projects



ELIGIBLE PROJECTS

- Bicycle and pedestrian facilities
- Bicycle and pedestrian education (grades K-12)
- Conversion of abandoned railway corridors to trails
- Construction of turnouts, overlooks, and viewing areas
- Outdoor advertising management
- Historic preservation and rehab of historic transportation facilities
- Vegetation management
- Archaeological activities
- Stormwater management
- Wildlife mortality mitigation
- Vulnerable road user assessment activity



SAFE ROUTES TO SCHOOL PROJECTS

Eligible Projects/Programs

- Infrastructure projects
 - Such as repairing or building sidewalks or bike paths
- Non-infrastructure programs and events that educate and encourage walking and biking
 - Such as bicycle safety lessons, bike helmet giveaways, or bike rodeos



PROJECT ELIGIBILITY DETERMINATIONS

- For projects that do not clearly fit guidance
- **NOT** required in order to submit an application
 - To submit an eligibility determination, the sponsor must compose an email to RA-pdTASA@pa.gov and provide an overview of the proposed project activities and describe how they align with an eligible project category (or categories).
 - Supporting attachments should be provided, if applicable.



ELIGIBLE PROJECT SPONSORS

- Local governments
- Regional transportation authorities
- Transit agencies
- Natural resource or public land agencies, including Federal agencies
- School districts, local education agencies, or schools
- Tribal governments
- A nonprofit entity in partnership with another eligible entity
- Any other local or regional governmental entity with responsibility for oversight of transportation or recreational trails
- MPOs that serve an urbanized area with a population of 200,000 or fewer
- A state, at the request of an eligible entity listed above



AVAILABLE FUNDING

Statewide

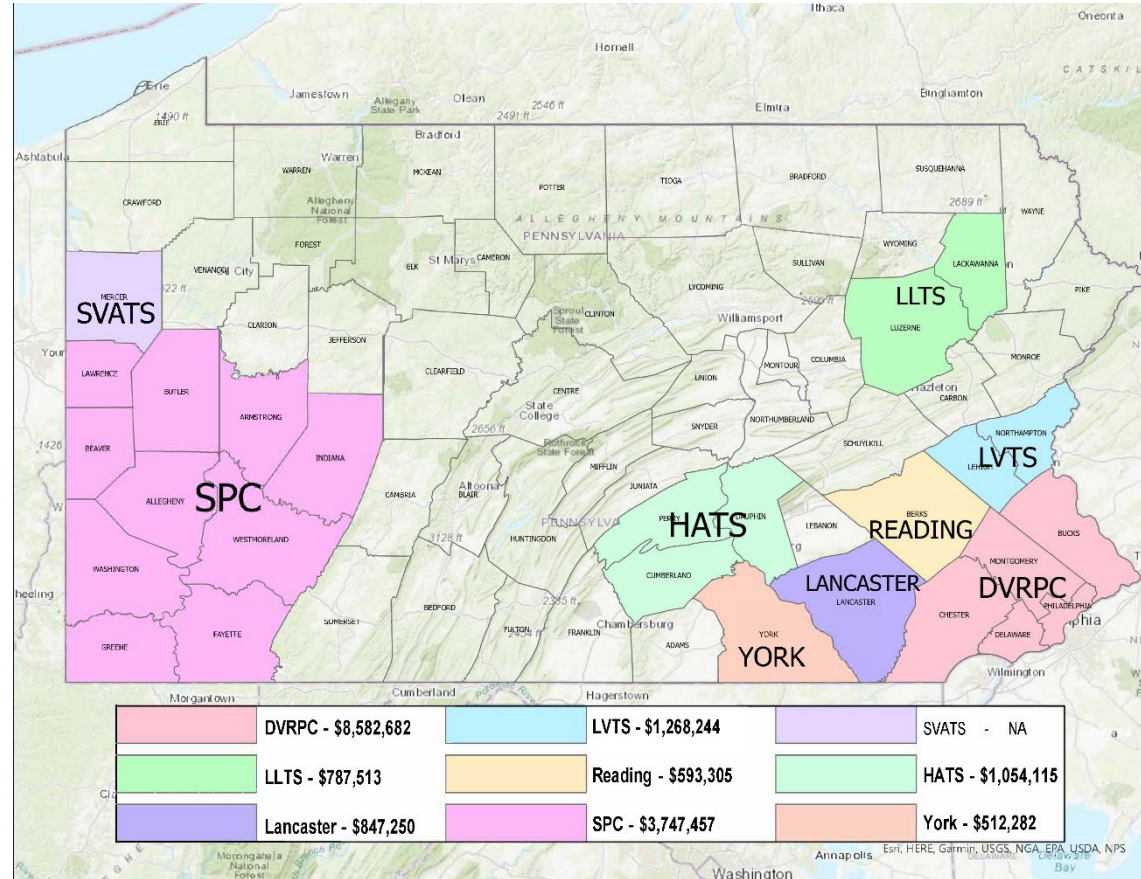
- ~\$70 million in TA Set-Aside Funds

Large MPO Areas

- ~\$10 million
- 3 participating MPOs
- See Large MPO Program Guidance
- SPC round currently open
 - [Check SPC region's website for information](#)



LARGE MPO FUNDING



Transportation Alternatives Set-Aside

- pa.gov/TASA
- Search “*TA Set-Aside*” on penndot.gov
- Google search “*PennDOT TA Set-Aside*”

The screenshot displays the official website of the Commonwealth of Pennsylvania, specifically the Pennsylvania Department of Transportation (PennDOT). The header includes the state logo, a search bar, and a navigation menu with links to Services, Agency Directory, Your Government, Visit PA, and News. The breadcrumb trail indicates the path: Agencies > Department of Transportation > Research, Planning & Innovation > Transportation Alternatives Set-Aside Program. The main heading is "Transportation Alternatives Set-Aside Program". Below this, a paragraph explains that the federal Transportation Alternatives Set-Aside (TASA) provides funding for projects and activities defined as transportation alternatives, including on- and off-road pedestrian and bicycle facilities, infrastructure projects for improving non-driver access to public transportation and enhanced mobility, community improvement activities, environmental mitigation, trails that serve a transportation purpose, and safe routes to school projects. At the bottom, there is a sidebar with the Pennsylvania Department of Transportation logo and a search bar, and a main content area with a paragraph about the Bipartisan Infrastructure Law (BIL) and a link to the Federal Highway Administration website. A resources section on the right lists links to TASA Guidance (PDF) and PennDOT Districts and

Official website of the Commonwealth of Pennsylvania

Commonwealth of Pennsylvania

Translate Search

Services Agency Directory Your Government Visit PA News

Agencies > Department of Transportation > Research, Planning & Innovation > Transportation Alternatives Set-Aside Program

PLANNING

Transportation Alternatives Set-Aside Program

The federal Transportation Alternatives Set-Aside (TASA) provides funding for projects and activities defined as transportation alternatives, including on- and off-road pedestrian and bicycle facilities, infrastructure projects for improving non-driver access to public transportation and enhanced mobility, community improvement activities, environmental mitigation, trails that serve a transportation purpose, and safe routes to school projects.

Pennsylvania Department of Transportation

Search

About PennDOT >

The Bipartisan Infrastructure Law (BIL), enacted as the Infrastructure Investment and Jobs Act (IIJA), continues to fund the TA Set-Aside through 2026. The federal guidance is available on the [Federal Highway Administration website](#).

Resources

- [TASA Guidance \(PDF\)](#)
- [PennDOT Districts and](#)

APPLICATION PROCESS

Registration via PDAuth

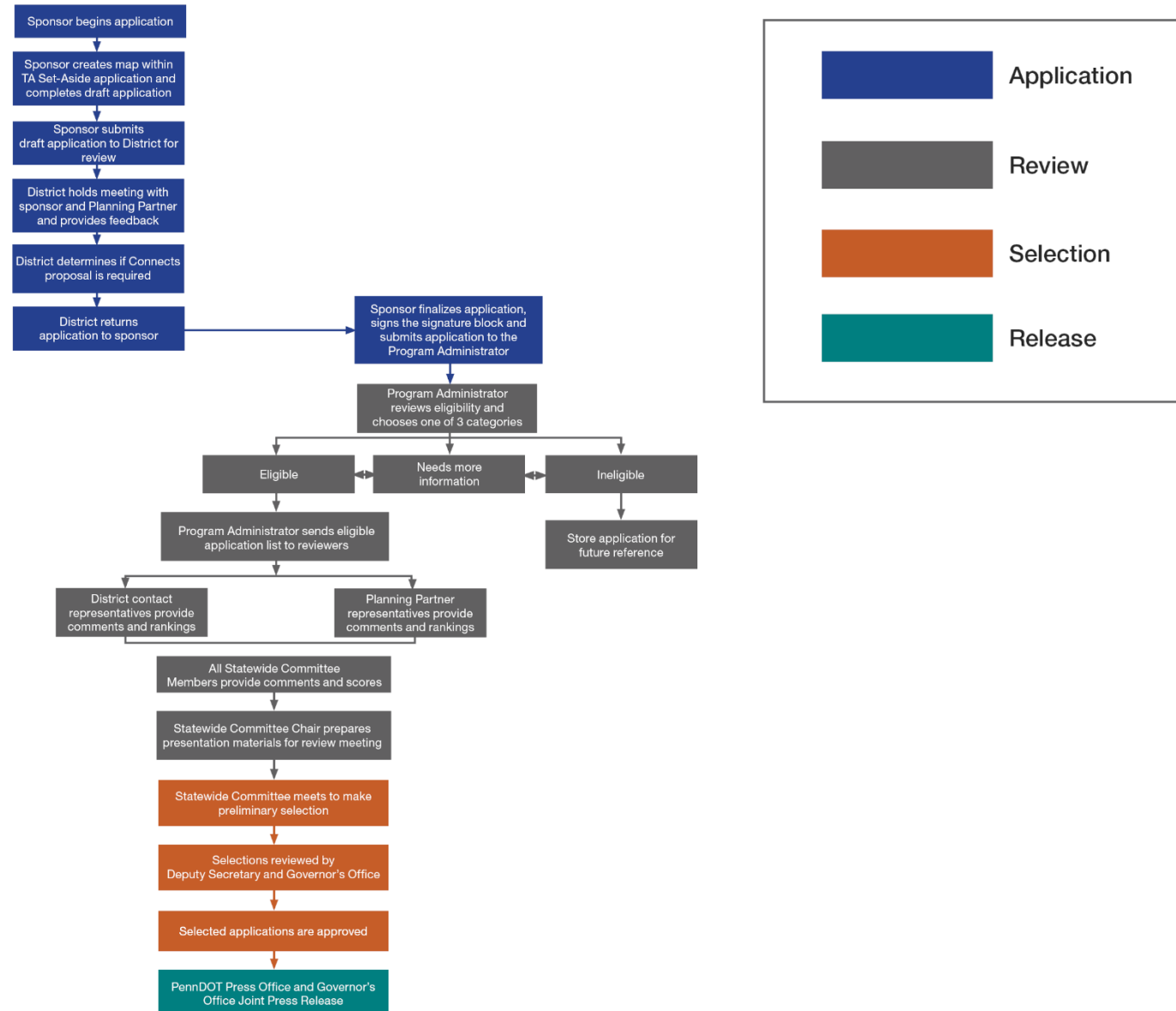
- Must be a registered user in [PDAuth](#) in order to complete application (registration information available on [Transportation Alternatives Set-Aside Website](#))

TA Set-Aside Application

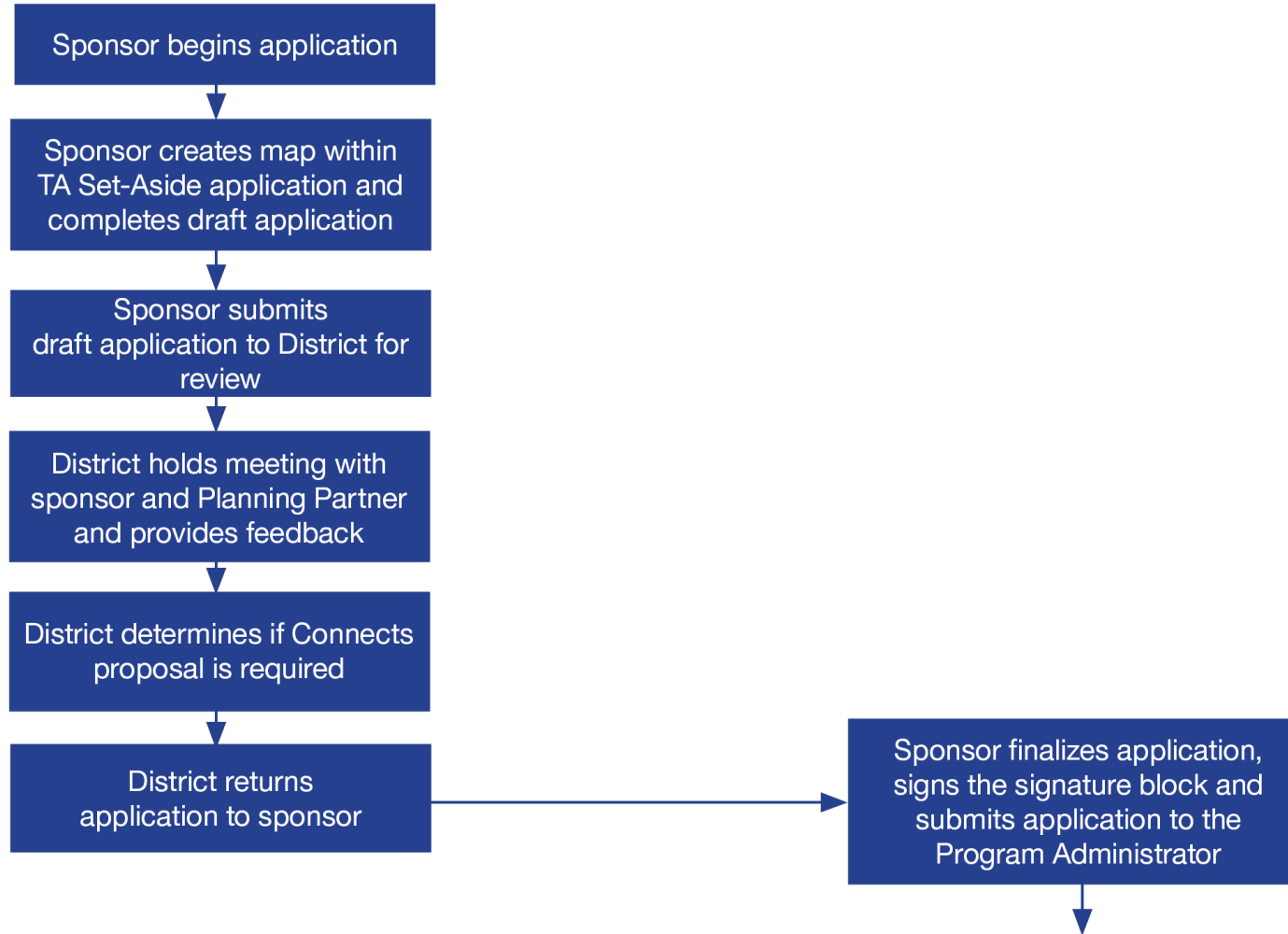
- <https://gis.penndot.pa.gov/tasa/home>
- Log in
- Create New Item
- Create 2025 Draft Application



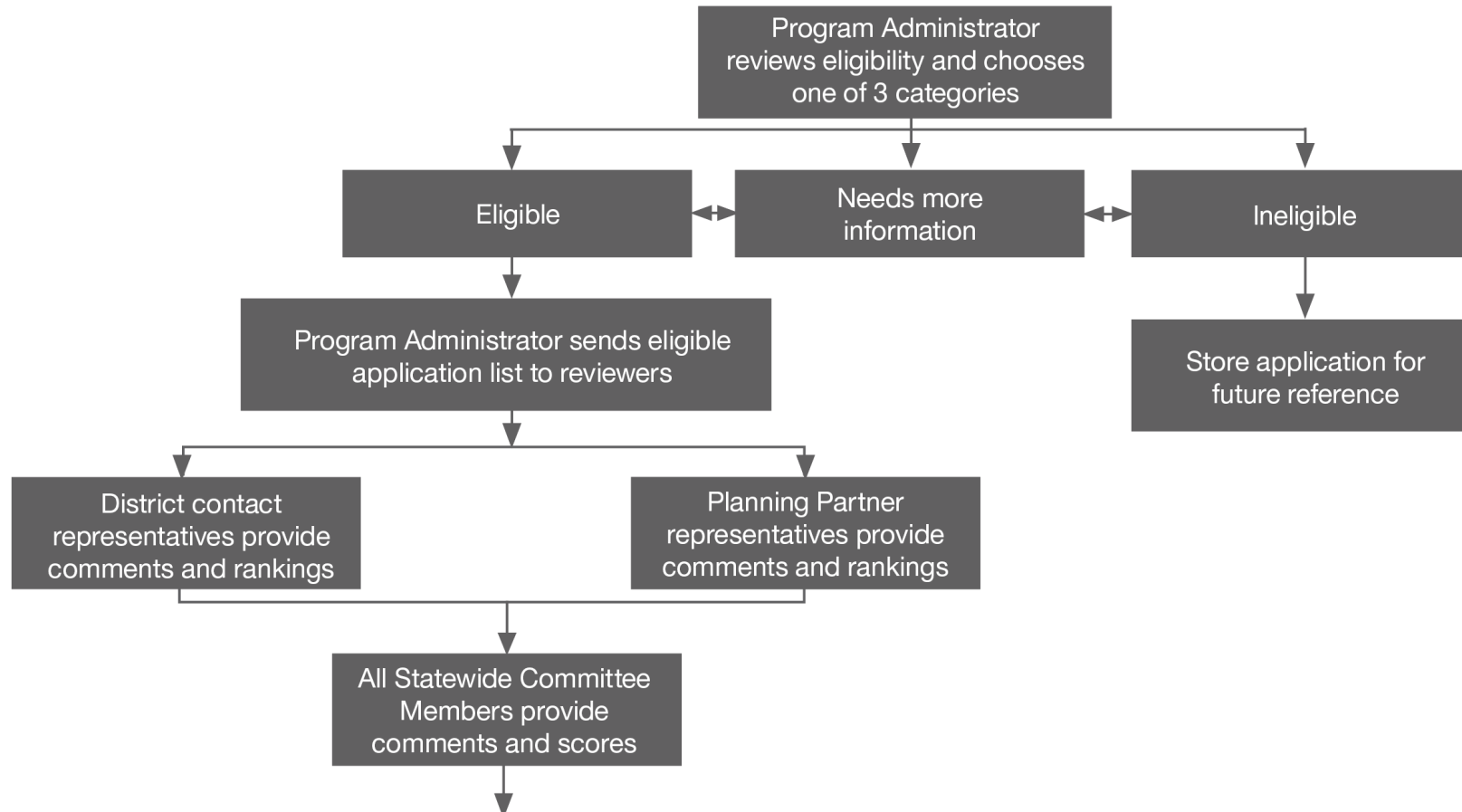
APPLICATION WORKFLOW



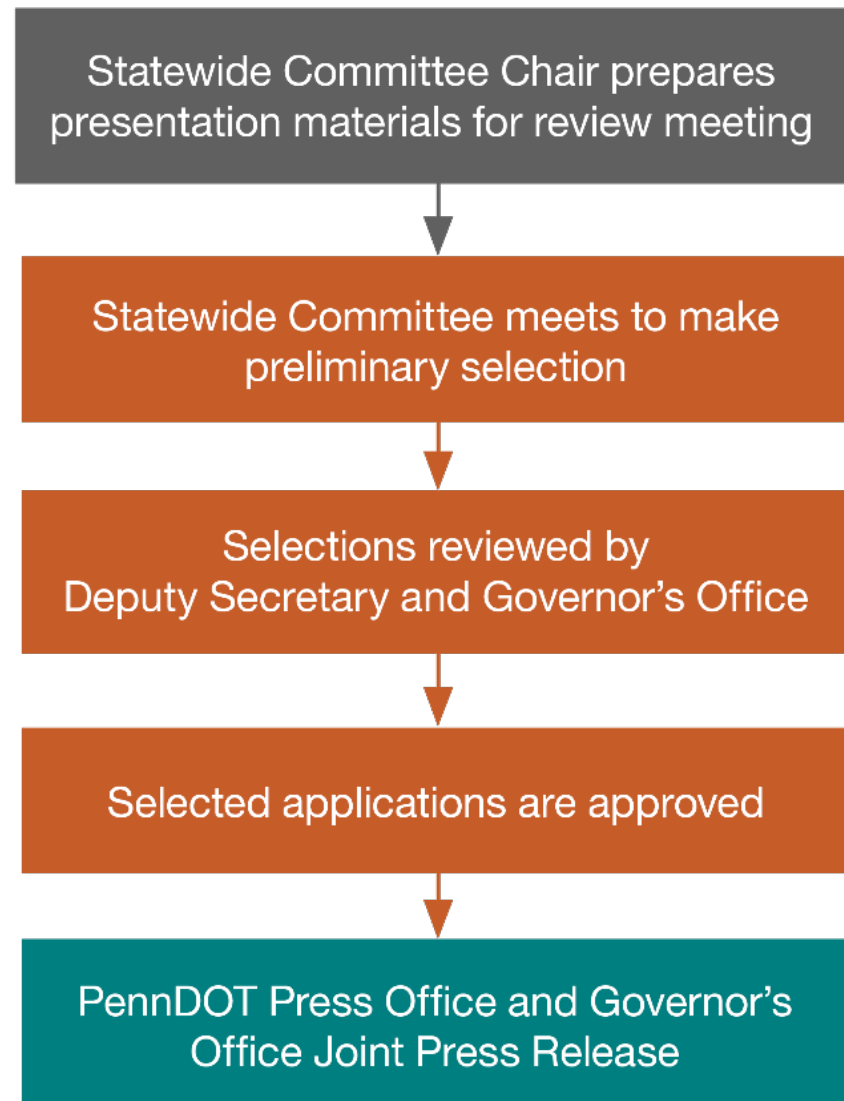
APPLICATION



REVIEW



SELECTION



APPLICATION TIMELINE

Application cycle opens	7/14/2025
Large MPO guidance / selection processes due	9/5/2025
Draft applications due to Districts by 4:00 PM	9/5/2025
Draft application meetings held	9/5/2025 – 10/30/2025
All project applications due by 4:00 PM	10/31/2025



STATEWIDE PROJECT SELECTION CRITERIA

General Criteria

- Network connectivity
- Community context
- Collaboration with stakeholders
- Leveraging of other projects or funds
- Cost estimating
- Project value

Areas of Emphasis

- Safety
- Project delivery
- PennDOT Connects environmental screening



REVIEW AND SELECTION PROCESS

November – January: Application Review

- MPOs/RPOs
 - Comments/rankings for statewide projects
 - Large MPOs select projects
- Districts
 - Comments/rankings
- Statewide Selection Committee
 - Comments/scores

February 2026: Project Selection

- Statewide Selection Committee meets
 - Reviews application scores and comments
 - Recommends projects

Spring 2026: Anticipated Award Announcement



REQUIREMENTS FOR SELECTED PROJECTS

- Environmental clearance
- Right-of-Way clearance
- Utility clearance
- Railroad clearance
- Applicable permits
- Reimbursement agreement
- Advertise for bids in PennDOT's ECMS System
- Must have contract documents that are ready to be advertised by Spring 2028



QUESTIONS?

Enter questions into the chat window.

TA Set-Aside Program Office

Email: RA-pdTASA@pa.gov

Phone: 717-775-3276



Justin Cambric Transportation Alternatives Set-Aside Coordinator

Email: jcambric@pa.gov

Phone: 717-705-1532

