



**COLD SPRING CREAMERY ROAD
OVER BRANCH OF PINE RUN
BRIDGE REPLACEMENT PROJECT
SR 1004 SECTION BB2
BUCKS COUNTY**

**PENNSYLVANIA DEPARTMENT OF TRANSPORTATION
ENGINEERING DISTRICT 6-0**

NOVEMBER 2023

BY: MAHMOUD A. ABDELRAHEEM



AGENDA

Project Location

Project Limits/Overview

Project Description

Project Purpose

Project Improvement

Traffic Control

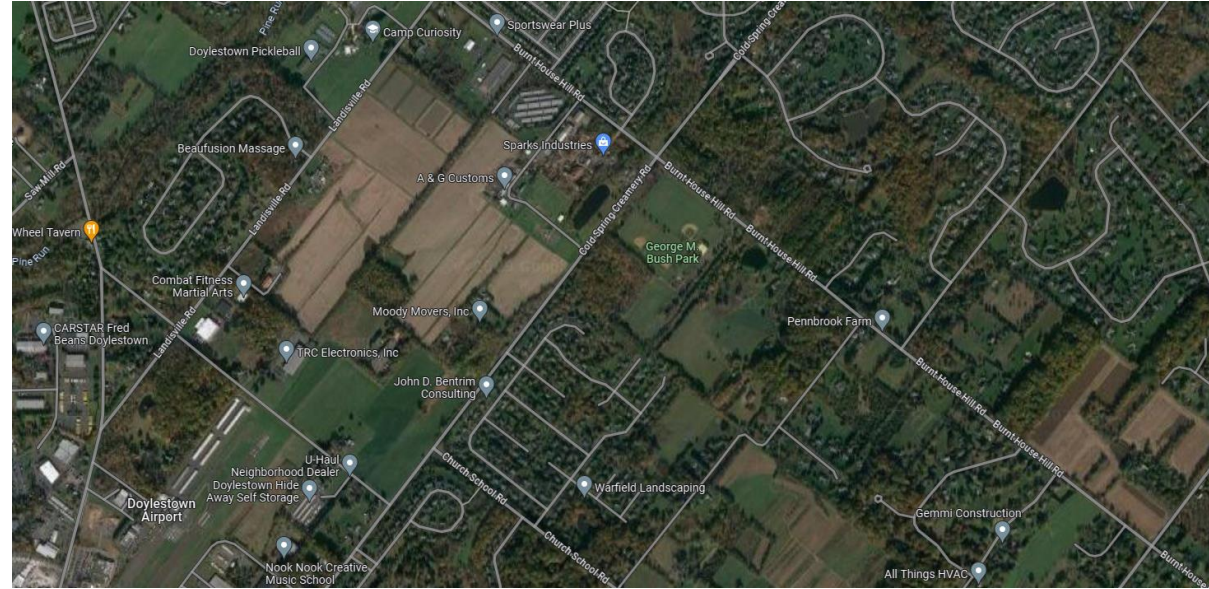
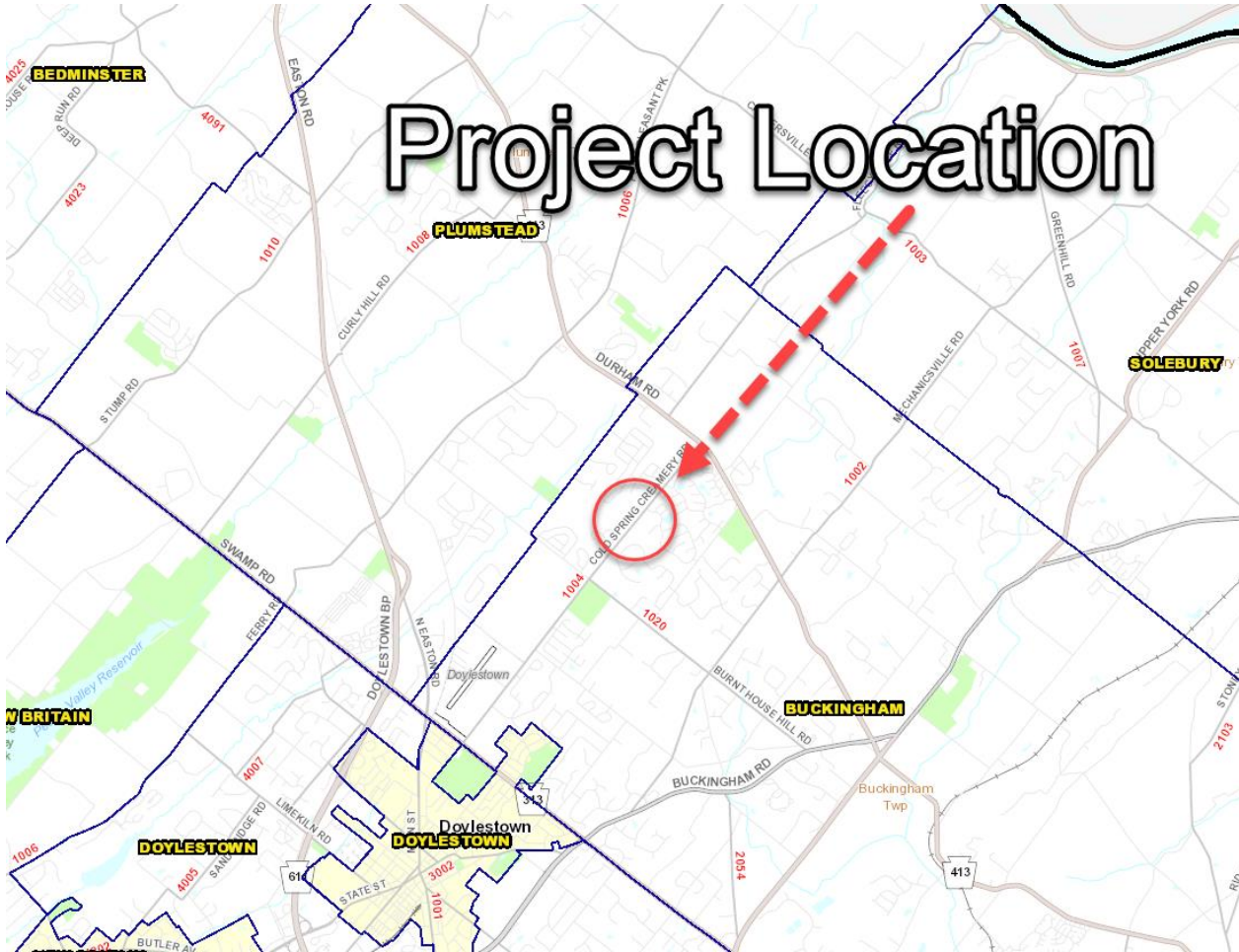
Project Link

Questions?

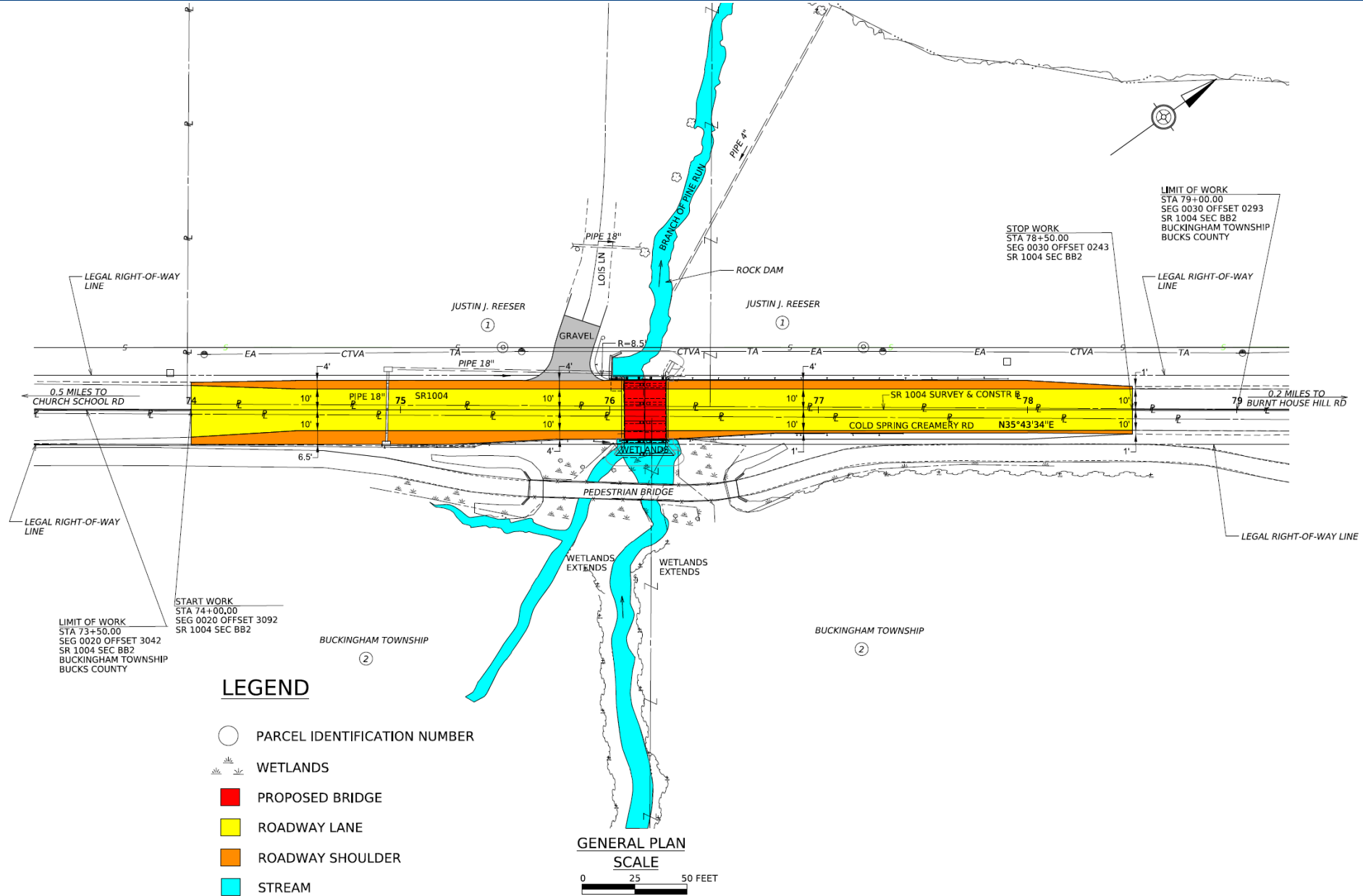


PROJECT LOCATION

Project Location



PROJECT LIMITS/OVERVIEW



PROJECT DESCRIPTION

- The project is a bridge replacement project for the bridge that carries Cold Spring Creamery Road over Branch of Pine Run in Buckingham Township, Bucks County, PA.
- The project includes replacing the existing structurally deficient structure with a concrete box culvert.
- SR 1004 will match the existing horizontal alignment.
- There will be no significant changes to the stream alignment.
- The proposed box culvert requires changes to existing vertical alignment as well as re-grading within the stream on both upstream and downstream sections.



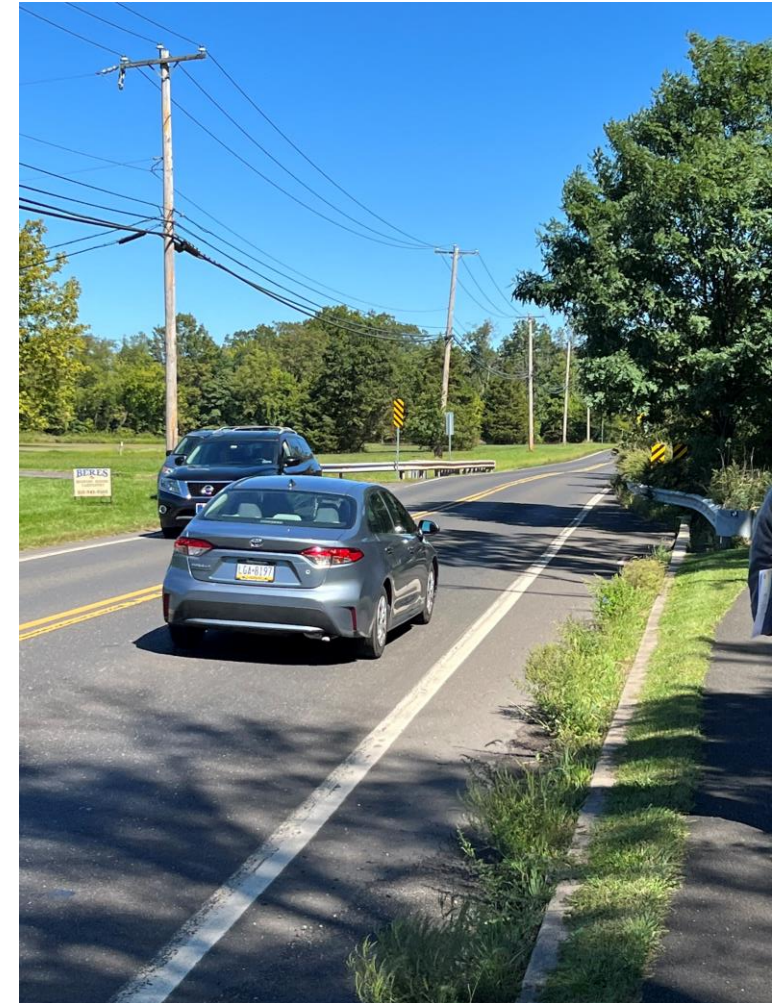
PROJECT PURPOSE

- Provide a new structure replacing the SR1004 existing bridge over Branch of Pine Run in Buckingham Township, Bucks County as it shows signs of deterioration that capable of handling the existing and expected traffic on Cold Spring Creamery Road efficiently and safely.
- Adding a new proposed shoulder each side of the bridge to provide better safety.



PROJECT IMPROVEMENT

- The proposed bridge is anticipated to replace a precast concrete box culvert on similar horizontal and vertical alignment instead of the existing single-span reinforced concrete slab bridge that was originally constructed in 1954 and has a total width (out-to-out) of 23.7 ft.
- The new structure will be wider than the existing bridge and will include two 10 ft lanes with 4 ft shoulders on both sides for a total width (out-to-out) of 31.79 ft.
- Roadway work is expected to be limited to full depth pavement construction for approximately 450 total linear feet.
- New up-to-standard guide rail on each approaches.



PROJECT LINK

[Cold Spring Creamery Road over Branch of Pine Run Bridge Replacement \(pa.gov\)](https://www.penndot.pa.gov/RegionalOffices/district-6/ConstructionsProjectsAndRoadwork/BucksCounty/Pages/Cold-Spring-Creamery-Road-over-Branch-of-Pine-Run-Bridge-Replacement.aspx)

<https://www.penndot.pa.gov/RegionalOffices/district-6/ConstructionsProjectsAndRoadwork/BucksCounty/Pages/Cold-Spring-Creamery-Road-over-Branch-of-Pine-Run-Bridge-Replacement.aspx>

The screenshot shows a web page from the Pennsylvania Department of Transportation. The page title is "Cold Spring Creamery Road over Branch of Pine Run Bridge Replacement". The breadcrumb trail is "DOT > Regional Offices > District 6 > Design & Construction Projects > Bucks County > Cold Spring Creamery Road over Branch of Pine Run Bridge Replacement". The page content includes a "Project Location" section with a map showing the project area in Bucks County, Pennsylvania. The map is titled "Project Location" and shows a red dashed line indicating the project location. The "Overview" section states: "PennDOT plans to replace the bridge that carries Cold Spring Creamery Road over a Branch of Pine Run in Buckingham Township, Bucks County. The existing single-span reinforced concrete slab bridge was originally constructed in 1954". The "Resources" section lists several PDF documents: "Project Location Map", "Detour Plan", "Public Meeting Plan", "TIP Visualization Report", "Site Photographs", and "USGS Map". The "Project Information" section lists: "County: Bucks", "State Route(s): 1004", "Local Name(s): Cold Spring Creamery Road", and "Project Type: Bridge Replacement". The "Project Contact" section lists: "Project Manager, Mahmoud A. Abdelraheem", "Email: mabdelrahe@pa.gov", and "Phone: 610-205-6836".



QUESTIONS?

THANK YOU!

Contact:

Mahmoud A. Abdelraheem

Project Manager

Phone: (610)205-6836

Email: mabdelrahe@pa.gov

Mailing Address:

PennDOT Engineering District 6-0, Plans Unit,
7000 Geerdes Blvd, King of Prussia, PA 19406

