

DISTRICT	COUNTY	ROUTE	SECTION	SHEET
6-0	BUCKS	0532	PH1	- OF -
NORTHAMPTON TOWNSHIP				
REVISION NUMBER	REVISIONS	DATE	BY	


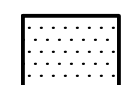






LIMIT OF WORK

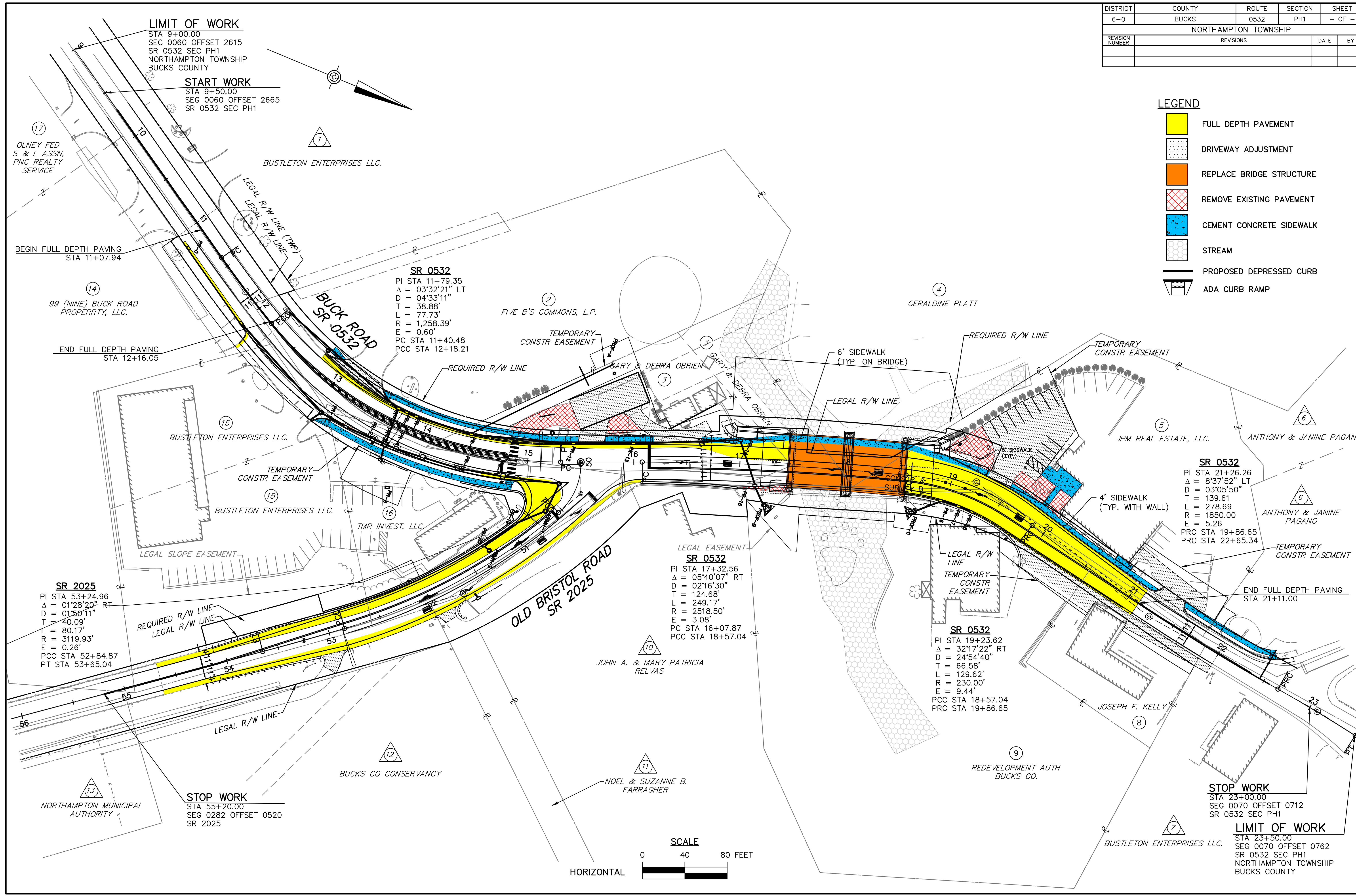
STA 9+00.00
SEG 0060 OFFSET 2615
SR 0532 SEC PH1
NORTHAMPTON TOWNSHIP
BUCKS COUNTY

START WORK

STA 9+50.00
SEG 0060 OFFSET 2665
SR 0532 SEC PH1

LEGEND

-  FULL DEPTH PAVEMENT
-  DRIVEWAY ADJUSTMENT
-  REPLACE BRIDGE STRUCTURE
-  REMOVE EXISTING PAVEMENT
-  CEMENT CONCRETE SIDEWALK
-  STREAM
-  PROPOSED DEPRESSED CURB
-  ADA CURB RAMP



STOP WORK
STA 55+20.00
SEG 0282 OFFSET 0520
SR 2025

STOP WORK
STA 23+00.00
SEG 0070 OFFSET 0712
SR 0532 SEC PH1

LIMIT OF WORK
STA 23+50.00
SEG 0070 OFFSET 0762
SR 0532 SEC PH1
NORTHAMPTON TOWNSHIP
BUCKS COUNTY

