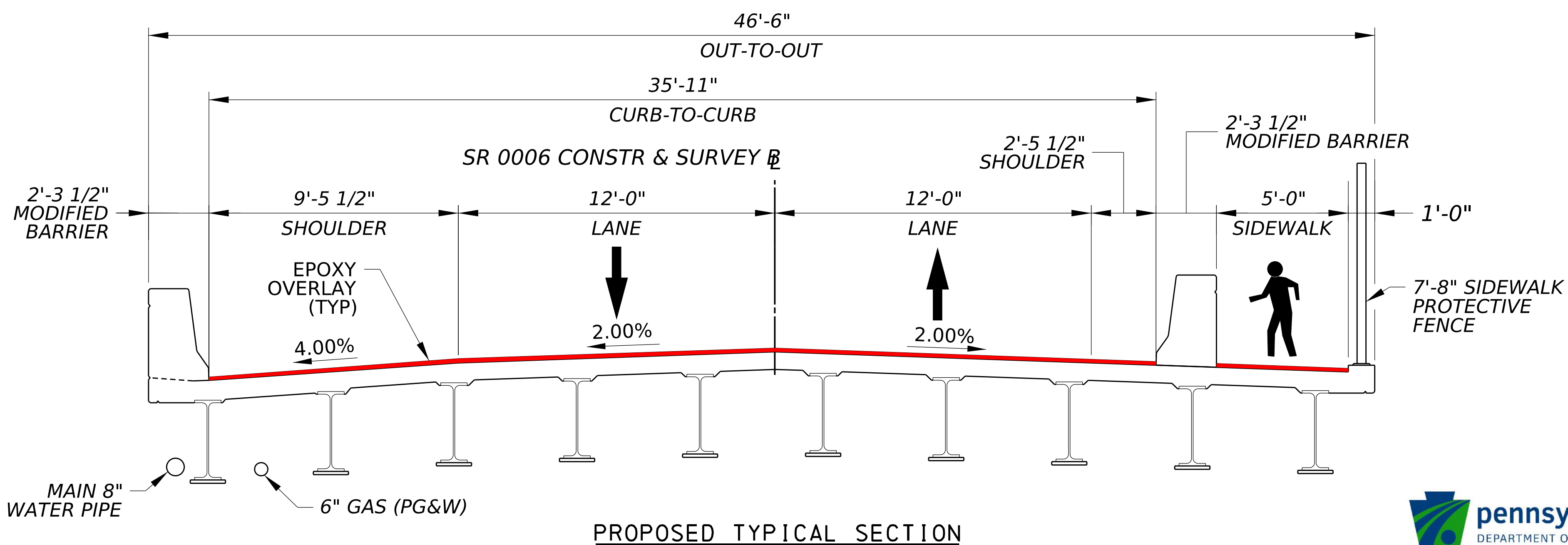
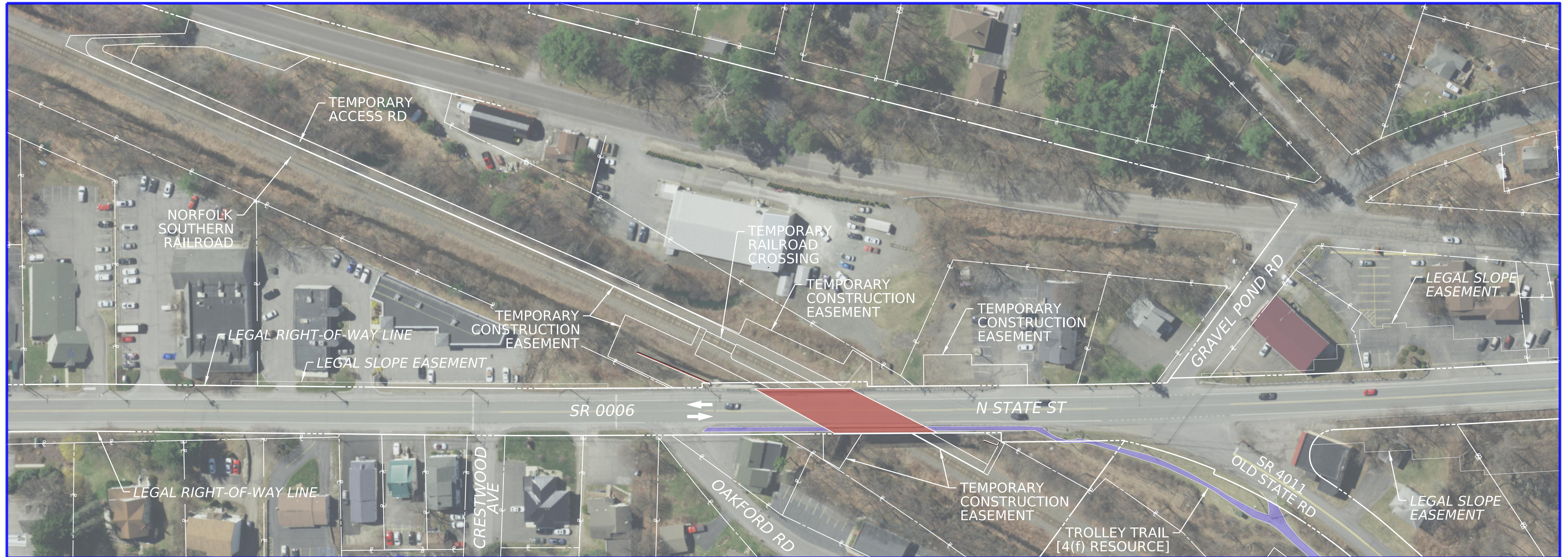
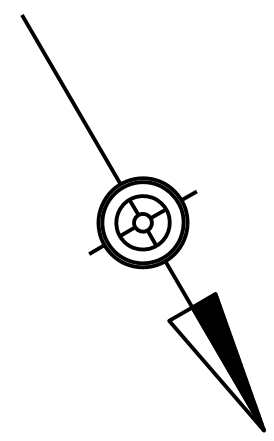


# State Route 0006 (N State Street) over Norfolk Southern Railroad Borough of Clark Summit, Lackawanna County, Pennsylvania



### LEGEND

- TROLLEY TRAIL
- PROPOSED BRIDGE EPOXY OVERLAY
- PROPERTY BOUNDARIES
- TEMPORARY CONSTRUCTION EASEMENT
- LEGAL RIGHT-OF-WAY

### SCOPE OF WORK:

1. MAINTAIN TRAFFIC IN ACCORDANCE WITH THE APPROVED TRAFFIC CONTROL PLAN. PROVIDE ACCESS AND INSTALL TEMPORARY RAILROAD CROSSING.
3. REFACE CONCRETE RETAINING WALLS.
4. INSTALL TEMPORARY BEAM SUPPORT AT ABUTMENT 1 (BEAM 1) AND REPAIR BEAM SEAT. CONTAIN, CLEAN AND PAINT THE END OF BEAM AND BEARING.
5. REPAIR DETERIORATED SUBSTRUCTURE CONCRETE AS INDICATED OR DIRECTED.
6. CLEAN BEAM SEATS AND BRIDGE SUPERSTRUCTURE.
7. PERFORM CONCRETE DECK REPAIRS AND INSTALL EPOXY OVERLAY ON BRIDGE DECK.