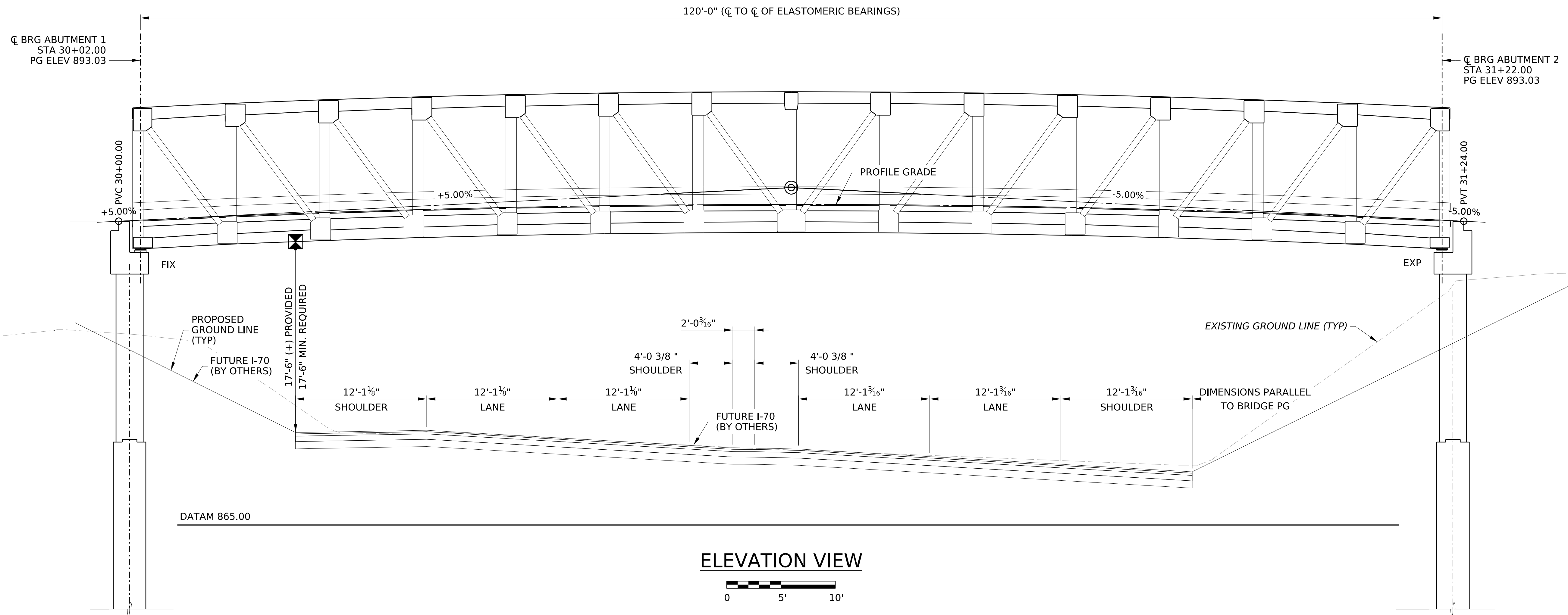
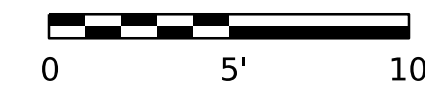


9/28/2023 10:24:04 AM p:\m-us-pw-bentley.com\mb-us-pw-01\Documents\MoonTownship_PA\01_Projects\Carson_St_Ped_Bridge\deliverables\OpenBridge\TS&L\640070414_Elevation.dgn

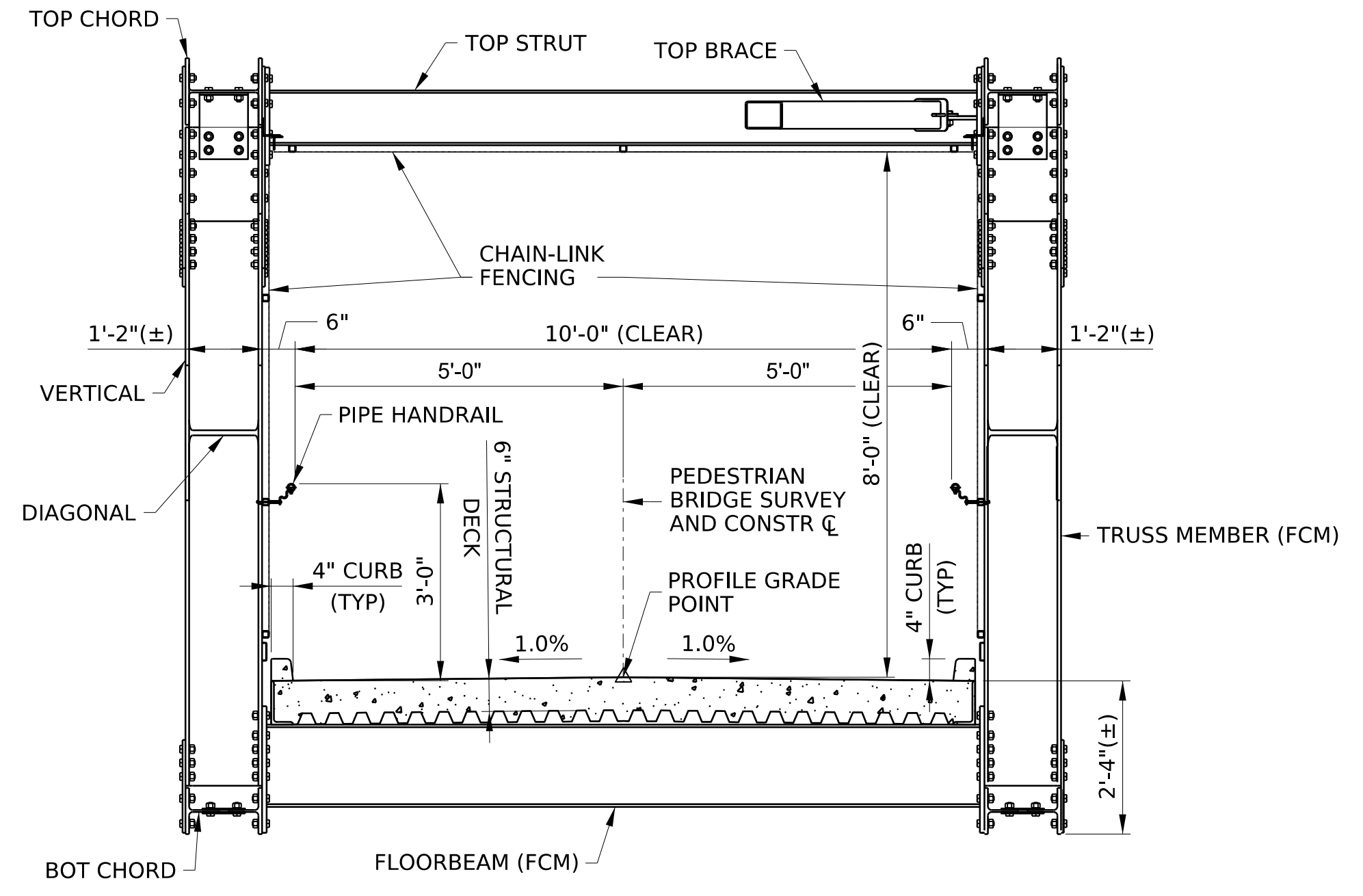


ELEVATION VIEW



LEGEND

- EXP DENOTES EXPANSION LAMINATED ELASTOMERIC BEARING PAD
- FIX DENOTES FIXED LAMINATED ELASTOMERIC BEARING PAD



FINAL TYPICAL SECTION
(LOOKING AHEAD STATION)
(NOT TO SCALE)

REFERENCES:

1. TYPE, SIZE, & LOCATION PLAN

SHEET

1

Mark	Description	By	Chk'd.	Recm'd.	Date
REVISIONS					

SR 0070 PREVIOUSLY KNOWN AS LR 0118
BMS STR ID: 64-0070-0414-2286
MPMS/ECMS PROJECT: 115909 BRKEY: 36036

PEDESTRIAN BRIDGE

COMMONWEALTH OF PENNSYLVANIA
DEPARTMENT OF TRANSPORTATION

WESTMORELAND COUNTY
SR 0070 SEC 01P

SEGMENT 0414 OFFSET 2286
ROSTRAVER TWP PEDESTRIAN BRIDGE STA 30+57.60
OVER SR 0070 EB & WB
SINGLE SPAN PREFABRICATED GALVANIZED STEEL
THROUGH TRUSS BRIDGE

ELEVATION & FINAL TYPICAL SECTION

RECOMMENDED _____ SHEET 2 OF 2

S - XXXXX

PRELIMINARY - NOT FOR CONSTRUCTION