

JEFFERSON COUNTY

**2026 DISTRICT 10
SPRING OUTREACH
MEETING**



Pennsylvania
Department of Transportation

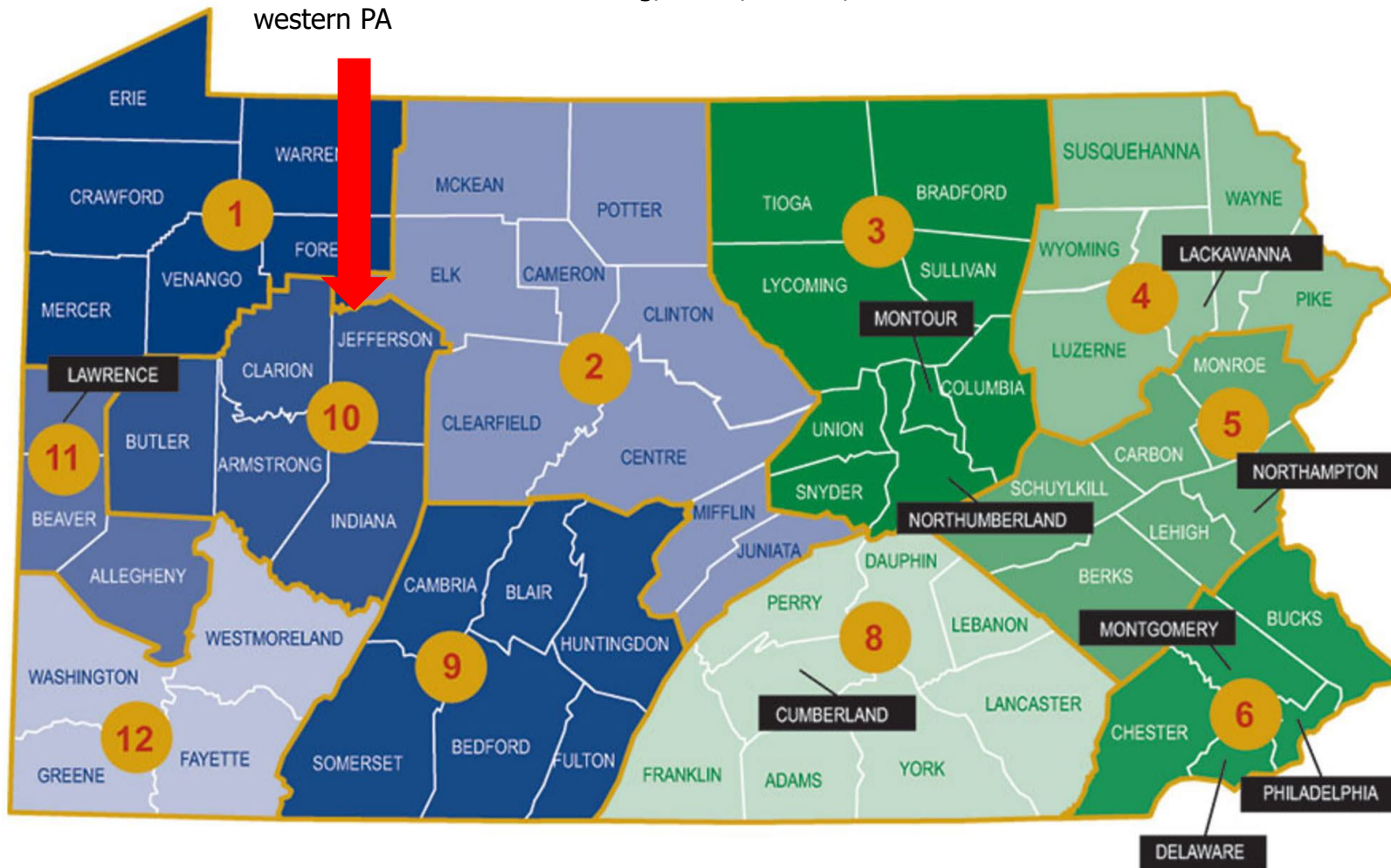
INTRODUCTIONS

- **BRIAN ALLEN, DISTRICT EXECUTIVE**
 - **WELCOME AND INTRODUCTIONS**
 - **DISTRICT 10 OVERVIEW**
- **PAUL KOZA, ASSISTANT DISTRICT EXECUTIVE - CONSTRUCTION**
 - **PROJECTS IN CONSTRUCTION**
- **ALICE HAMMOND, ASSISTANT DISTRICT EXECUTIVE - DESIGN**
 - **PROJECTS IN DESIGN**
- **MATT GASTON, JEFFERSON COUNTY MAINTENANCE MANAGER**
 - **COUNTY MAINTENANCE OVERVIEW**
- **STEVE VASBINDER, MUNICIPAL SERVICES SUPERVISOR**
 - **MUNICIPAL SERVICES OVERVIEW**
- **TINA GIBBS, DISTRICT COMMUNITY RELATIONS COORDINATOR**
 - **WEBSITE RESOURCES & SOCIAL MEDIA**



WHERE IS DISTRICT 10?

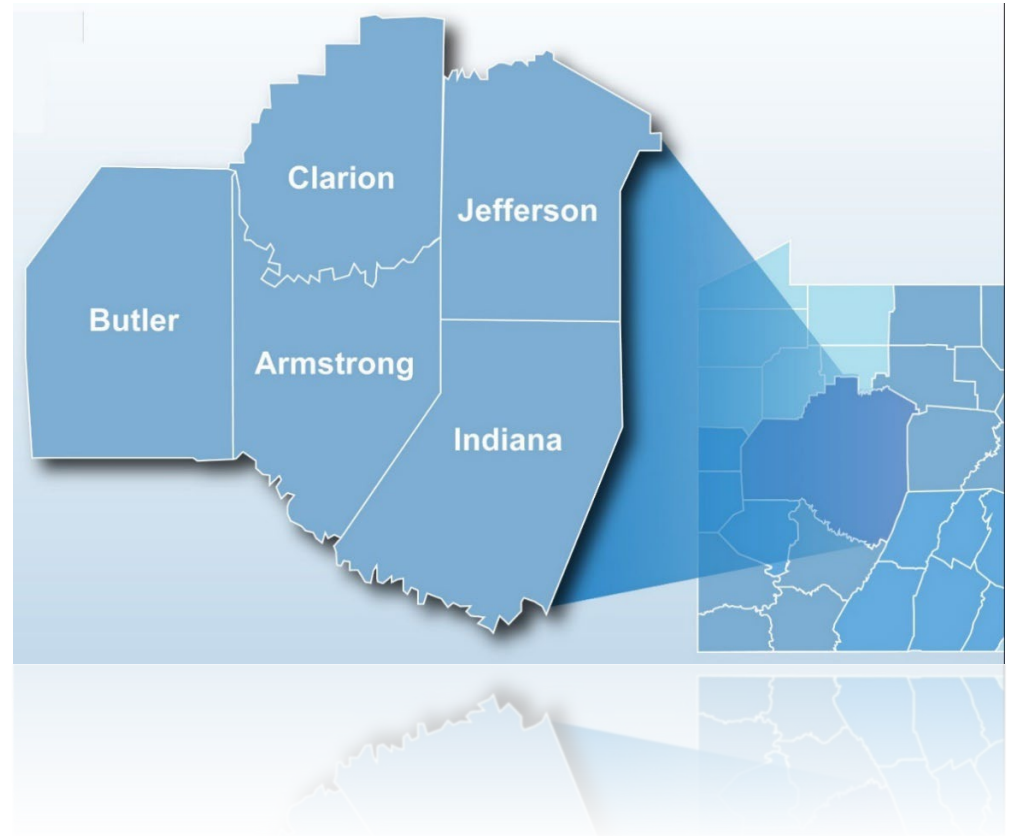
District 10 consists of Armstrong, Butler, Clarion, Indiana & Jefferson Counties in western PA



DISTRICT 10 OVERVIEW

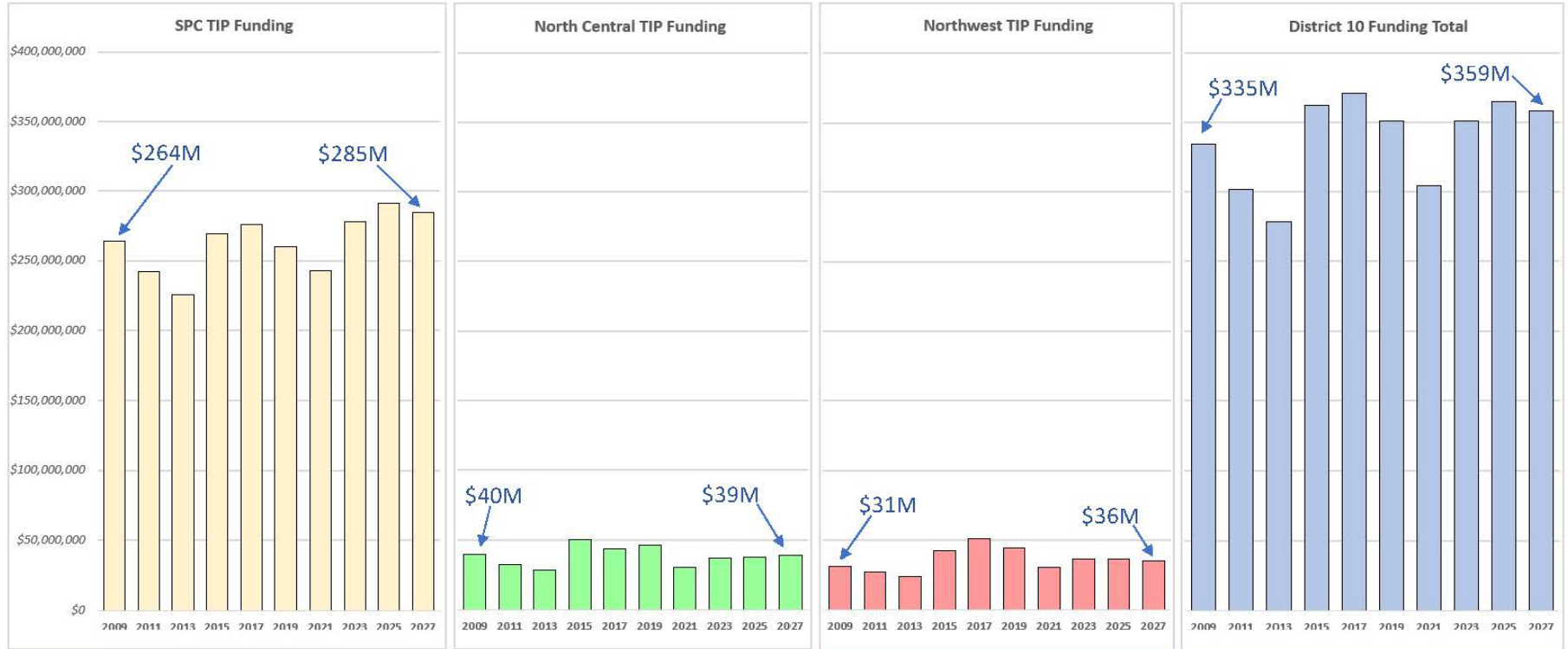
- 5 counties
- 800 employees
- 1,624 bridges
- 7,117 lane miles
- 7,006 snow lane miles

- The 2026 construction and maintenance season in District 10 includes:
 - 64 construction projects
 - 413 miles of seal coating
 - nearly 1,190 miles of shoulder cutting



TIP FUNDING ALLOCATION

District 10's TIP Funding Allocation Over Time



TIP Funding Cycle	SPC TIP Funds	North Central TIP Funds	Northwest TIP Funds	District Total TIP Funds
2009	\$264,116,000	\$9,510,000	\$31,086,000	\$334,714,000
2011	\$242,108,000	\$8,457,000	\$26,978,000	\$301,543,000
2013	\$225,718,000	\$2,478,000	\$24,131,000	\$278,025,000
2015	\$259,461,000	\$5,496,000	\$42,624,000	\$362,581,000
2017	\$276,000,000	\$48,468,000	\$51,484,000	\$370,942,000
2019	\$250,054,000	\$46,466,000	\$44,767,000	\$351,277,000
2021	243,157,000	\$9,573,000	\$8,615,000	\$304,965,000
2023	\$277,806,000	\$36,910,000	\$36,601,000	\$381,117,000
2025	\$280,282,000	\$7,334,000	\$36,468,000	\$365,074,000
2027	\$284,051,000	\$8,677,000	\$85,969,000	\$859,297,000

*Data is based on the following: 2027 allocations reflect District allocations as of 1-20-2026. 2011-2027 data is per original Financial Guidance from Mark Tobin. 2009 is existing District data. This document can be found at the following location: J:\Design\Planning and Programming\DM DeFazio\TIP Funding Over Time Graph 2027_Final.pptx

By: Dominic M. DeFazio
1-20-2026



CONSTRUCTION

PAUL KOZA – ADE
CONSTRUCTION



CLARION LINE-SNYDER

- Route 28
- Clover, Rose,
& Redbank Townships
- Cost: \$4,312,312
- Anticipated
Completion:
5/25/2026
- Prime Contractor:
Glenn O. Hawbaker,
Inc.
- Resurfacing



T-353 MILL RUN BRIDGE

- T-353 Bottom Road
- Eldred Township
- Cost: \$1,187,153
- Anticipated
Completion: 11/5/2026
- Prime Contractor:
Thomas Construction,
Inc.
- Bridge Replacement
- 168 Day Detour



T-517 KRAMER ROAD BRIDGE

- T-517 Kramer Road
- McCalmont Township
- Cost: \$784,902
- Anticipated
Completion: 11/3/2026
- Prime Contractor:
C.H.&D. Enterprises,
Inc.
- Superstructure and
Deck Replacement
- 118-Day Detour



I-80 CONCRETE FALLS CREEK REHAB

- I-80
- Washington Township
- Cost \$28,692,692
- Anticipated Completion: Fall 2027
- Prime Contractor: Glenn O. Hawbaker, Inc.
- Concrete Preservation/Asphalt Overlay



ROUTE 950 REYNOLDSVILLE NORTH RESURFACING

- Route 950
- Reynoldsville Borough & Winslow Township
- Cost: \$2,298,298
- Anticipated Completion: 9/18/2026
- Prime Contractor: Glenn O. Hawbaker, Inc.
- Resurfacing



GLEN-GERY & RUNAWAY RUN BRIDGES

- Route 28
- Summerville Borough
- Cost Estimate: \$2.5M - \$5M
- Let Date: 7/16/2026
- Bridge Replacements
- Phased Construction



Glen-Gery Bridge



Runaway Run Bridge

SOLDIER BRIDGE

- Route 2031
- Winslow Township
- Cost Estimate: \$1M – \$2.5M
- Let Date: 7/30/2026
- Bridge Replacement with Box Culvert
- Detour in 2027



ROUTE 322 OVER CAMPBELL RUN

- Route 322
- Rose Township
- Cost Estimate: \$1M
– \$2.5M
- Let Date: 8/27/2026
- Bridge Replacement
- Phased Construction



2026 DISTRICT 10 HFST

- District Wide
- Cost: \$1,949,197
- Anticipated Completion: 10/30/2026
- Prime Contractor: MEKIS Construction Corporation
- Safety Improvement



2026 COUNTY GUIDERAIL

- County Wide Projects
Various Routes
- Cost: \$1,309,422
- Anticipated Completion:
12/31/2027
- Prime Contractor: Penn
Line Service, Inc.
- Repair and
Replacement of Guiderail



2026 DISTRICT 10 SMALL PAINT

- District Wide
- Cost Estimate: < \$1M
- Let Date: 5/7/2026
- Paint Legend Replacement



DESIGN

ALICE HAMMOND – ADE
DESIGN

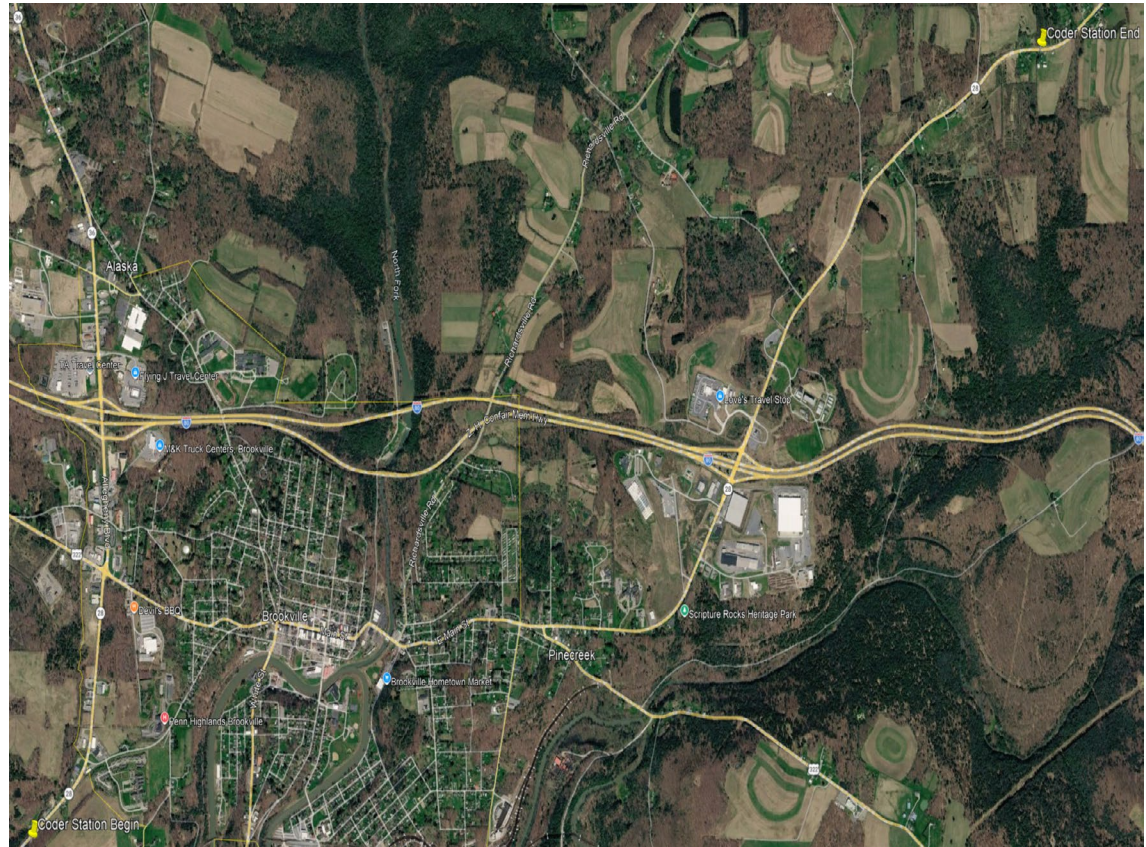


Pennsylvania
Department of Transportation

Roadway Projects

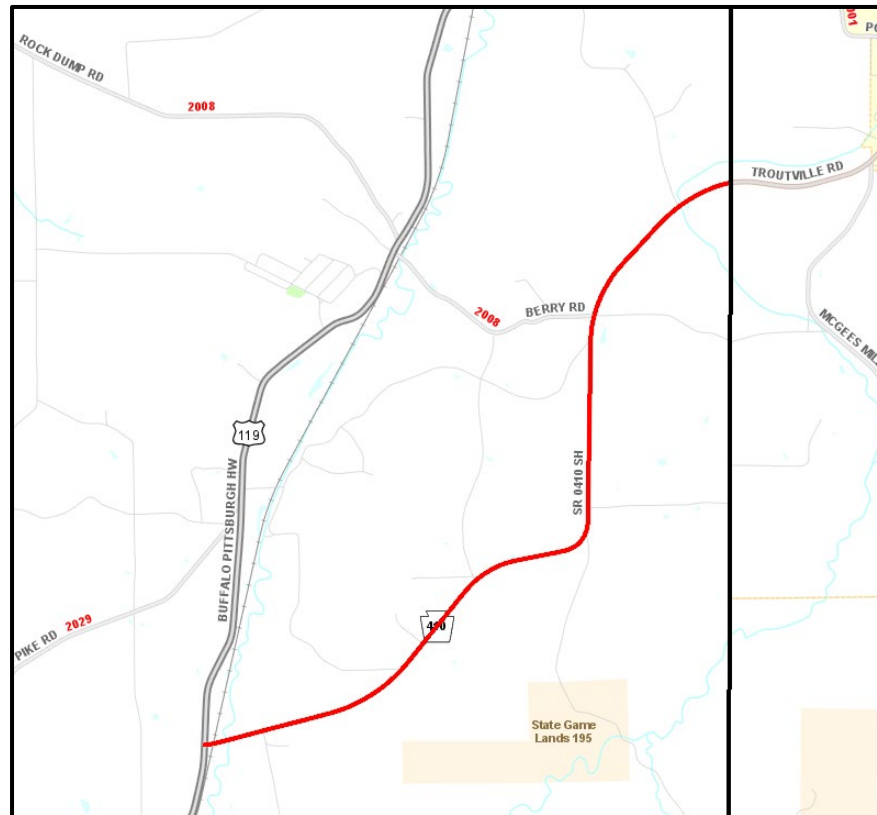
CODER STATION NORTH

- Routes 28 & 322 (North of Snyder Road to Intersection of Route 322 and North of Intersection Haney Road to Intersection Milliron Road)
- Preventative Maintenance
- Pine Creek & Rose Townships & Brookville Borough
- Construction in 2027
- Construction Estimate: \$2.5M - \$5.0M



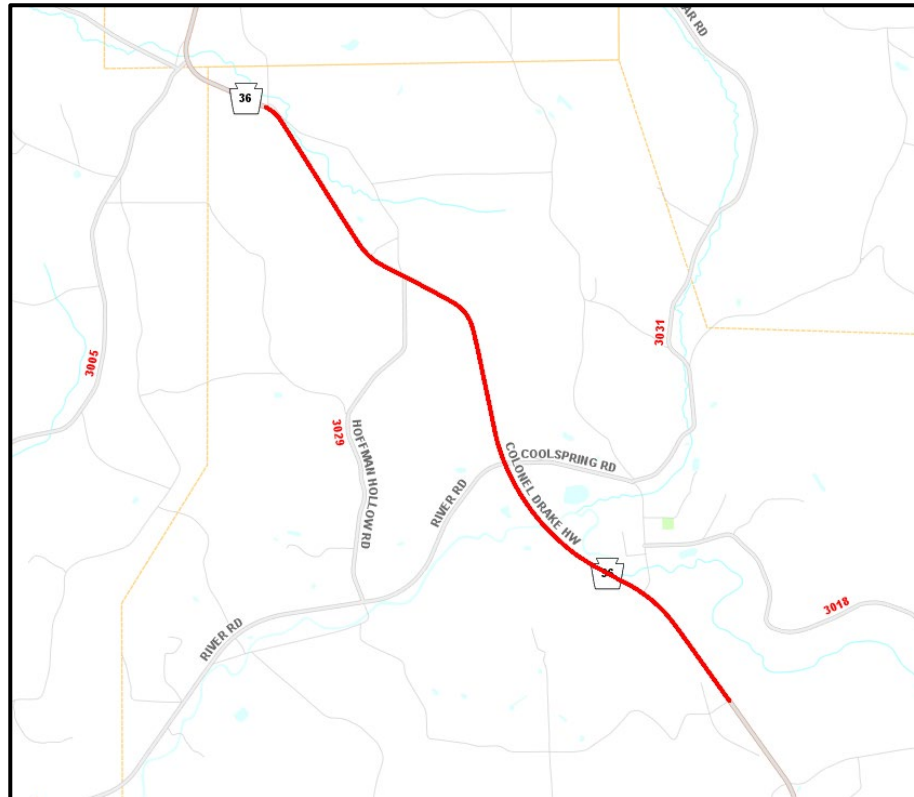
ROUTE 410

- Route 410 Resurfacing (from Route 119 to Clearfield County Line)
- Surface Improvement Program (SIP) - including milling and overlay with minor drainage and guiderail upgrades
- Henderson Township
- Construction in 2027
- Construction Estimate: \$2.0M



ROUTE 36 STANTON SOUTH CAPE SEAL

- Route 36 (from near the village of Stanton South to Coolspring)
- Surface Improvement Program (SIP) - including milling and overlay with minor drainage and guiderail upgrades
- Oliver Township
- Construction in 2027
- Construction Estimate: \$1.0M - \$2.5M



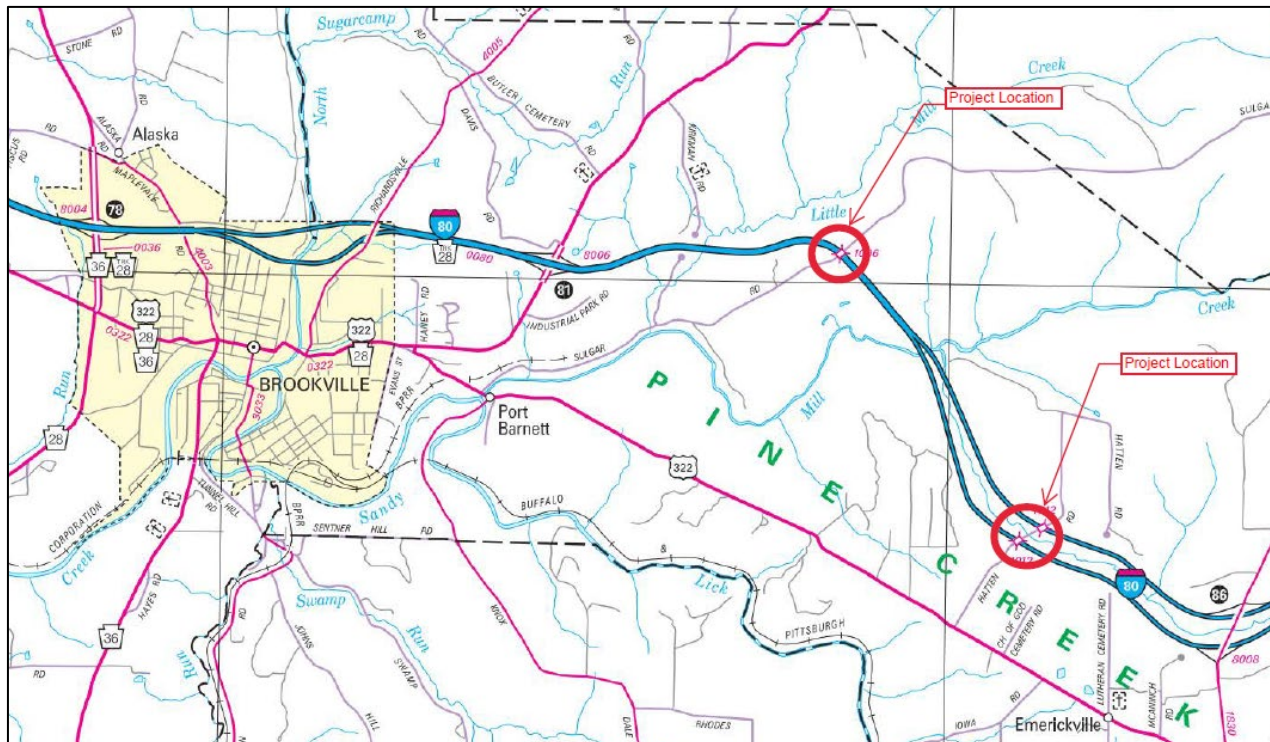
HAZEN NORTH RESURFACING

- Route 28 (from Milliron Road to North of Intersection Kesterhold Road)
- Preventative Maintenance
- Pine Creek and Warsaw Township
- Construction in 2027
- Construction Estimate: \$2.5M - \$5.0M



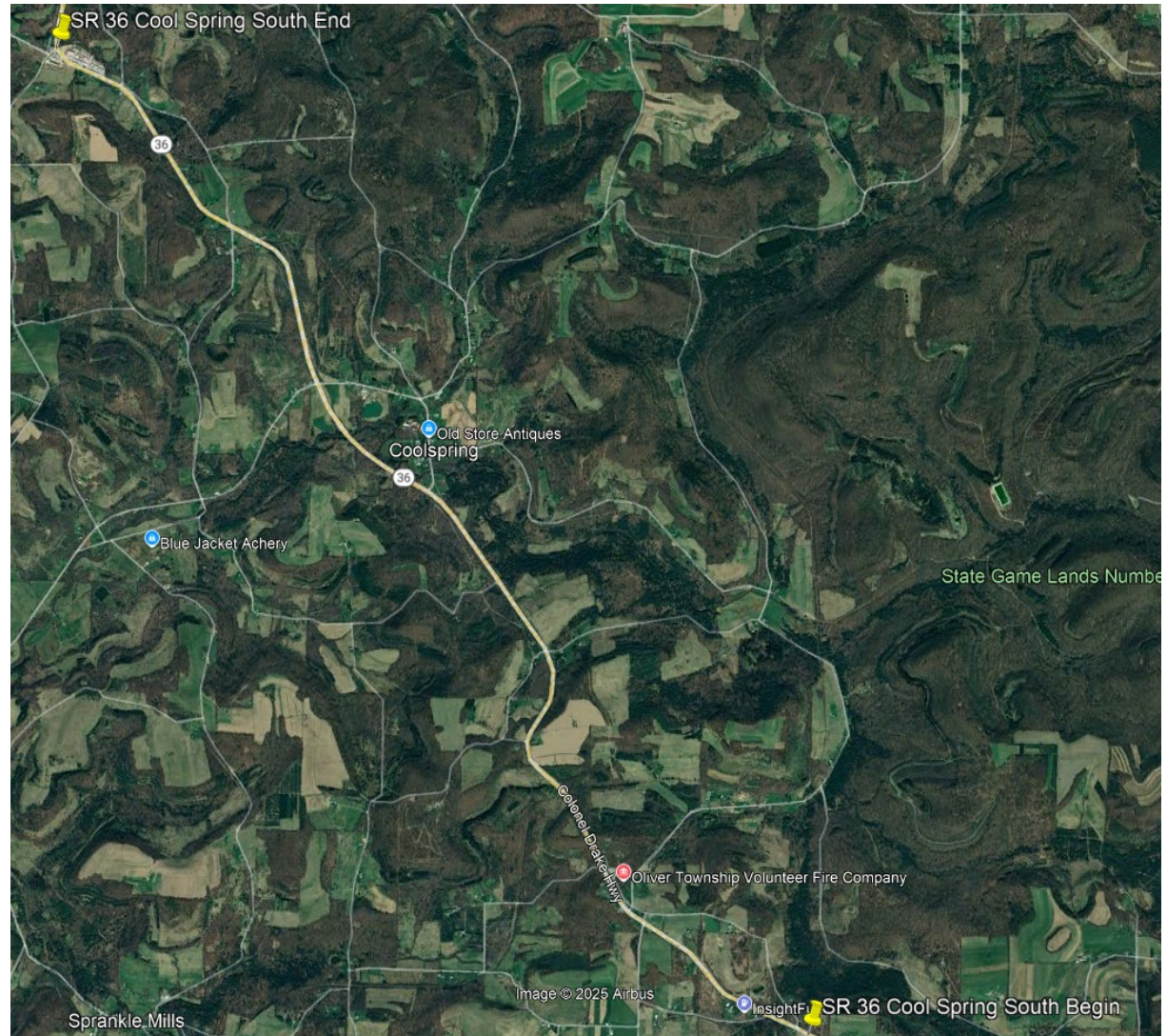
I-80 BROOKVILLE EAST PHASE 1

- I-80
- Bridge Replacements – Route 1012 Hatten Road, Route 1006 Sulgar Road both over I80 Eastbound and Westbound
- Pine Creek Township
- Construction in 2027
- Construction Estimate: \$30M - \$35M



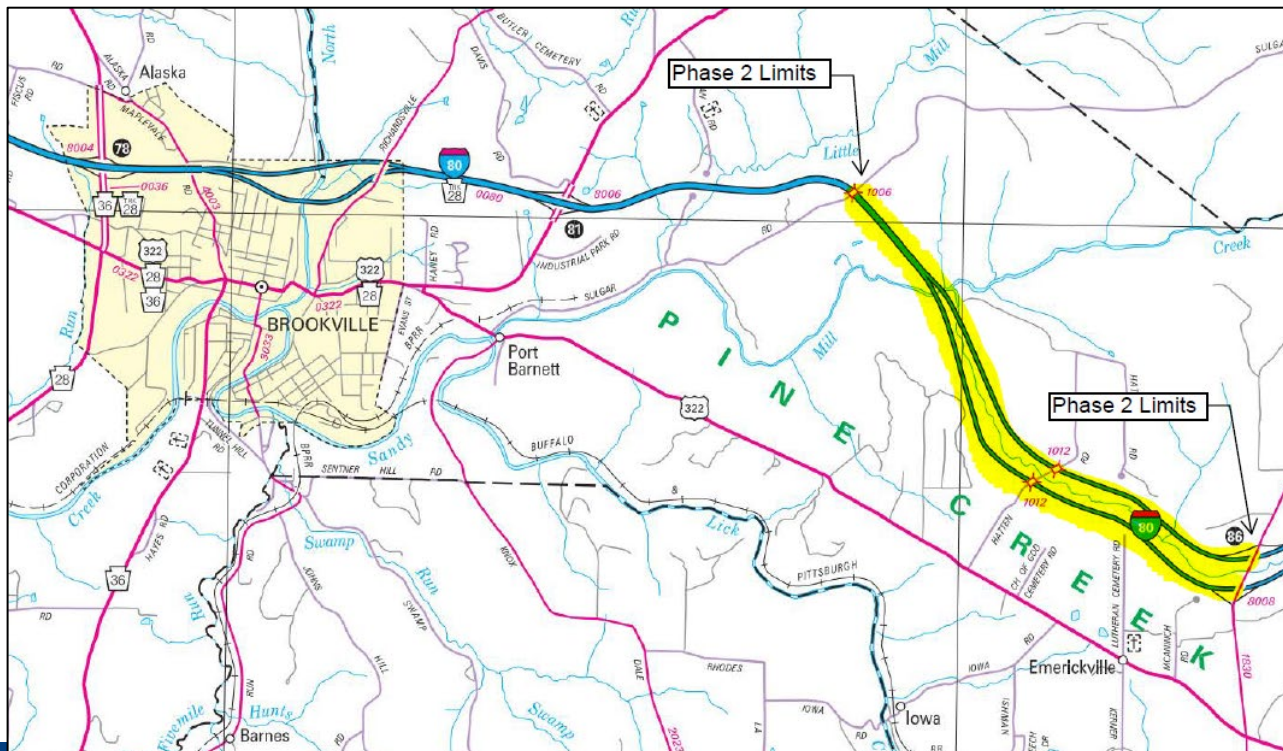
COOL SPRING SOUTH RESURFACING

- Route 36 (from Intersection Dale Lane North to Intersection with Pansy Road)
- Preventative Maintenance
- Oliver, Beaver & Rose Townships
- Construction in 2029
- Construction Estimate: \$2.5M - \$5.0M



I-80 BROOKVILLE EAST PHASE 2

- I-80 (from Route 1006 Sulgar Road to Route 1830 Fuller Road Interchange)
- Bridge Replacements and Interstate Reconstruction Project
- Pine Creek Township
- Construction in 2029
- Construction Estimate: \$200M - \$225M



WARSAW TO WEST HILL ROAD RESURFACING

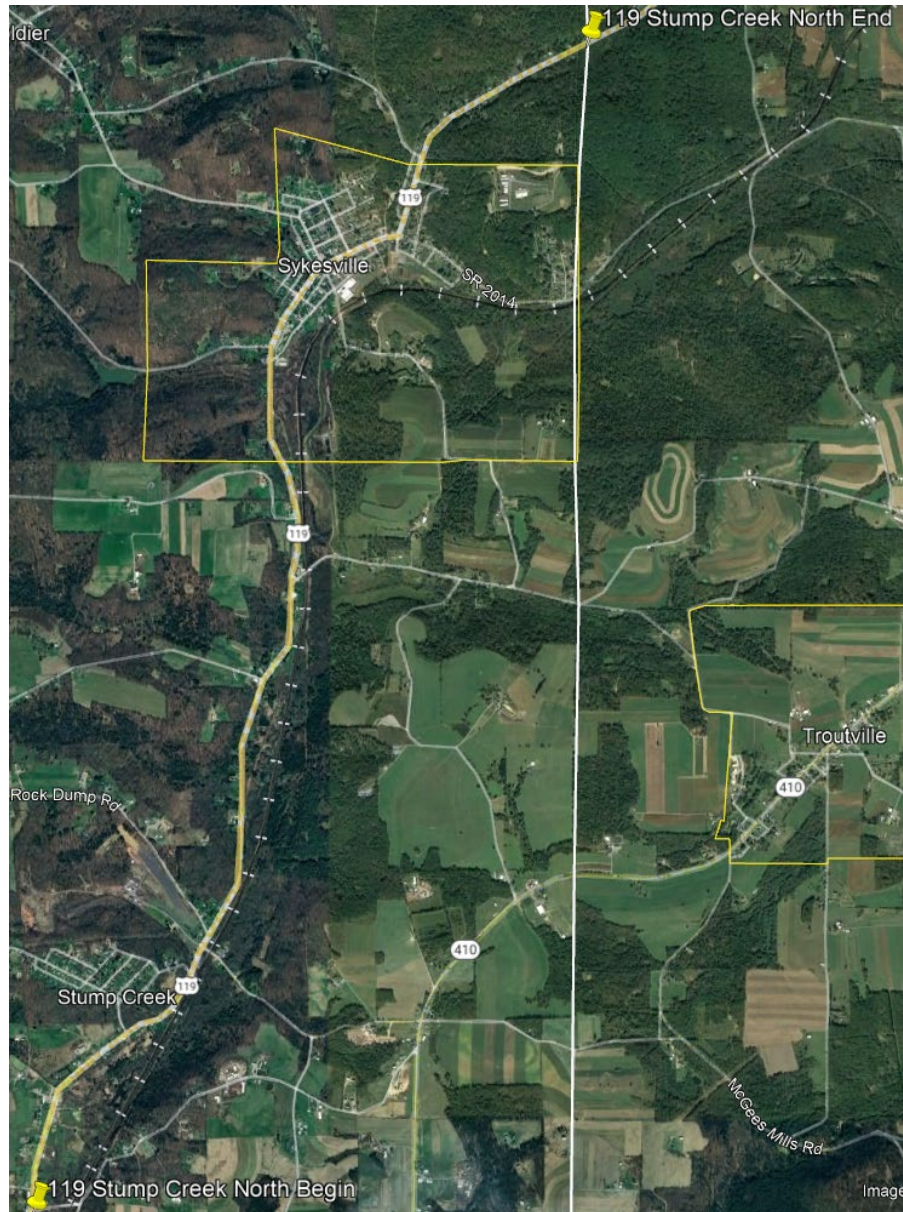


- Route 28 (from near Intersection of Kesterholt Road North to Intersection of Route 1021)
- Preventative Maintenance
- Snyder & Warsaw Townships
- Construction in 2029
- Construction Estimate: \$2.5M - \$5.0M



STUMP CREEK NORTH RESURFACING

- Route 119 (from South of Intersection with Route 2029 North to Clearfield County Line)
- Preventative Maintenance – including milling and overlay with minor drainage & guiderail upgrades
- Henderson & Winslow Townships & Sykesville Borough
- Construction in 2029
- Construction Estimate: \$2.5M - \$5.0M



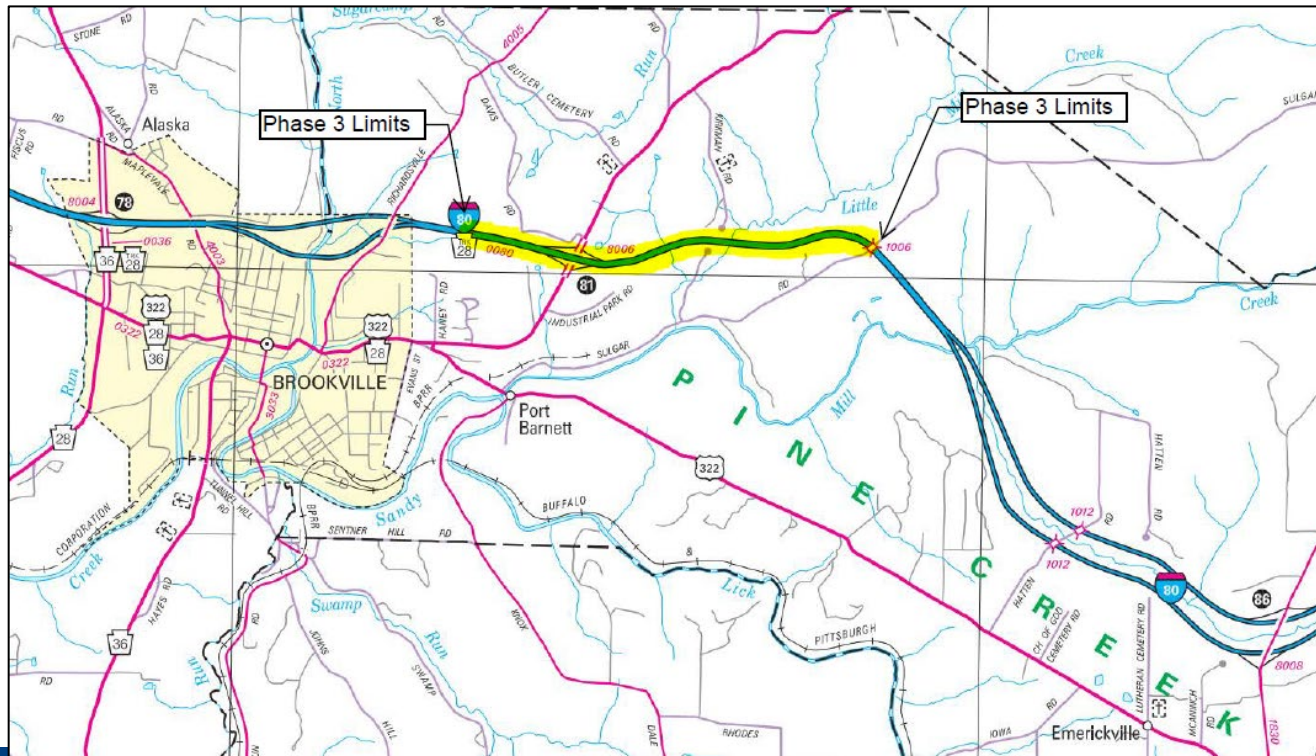
BIG RUN RESURFACING

- Route 119 (from Lions Club Road North to Intersection with Route 2029)
- Preventative Maintenance
- Bell and Henderson Townships & Big Run Borough
- Construction in 2029
- Construction Estimate: \$1.0M - \$2.5M



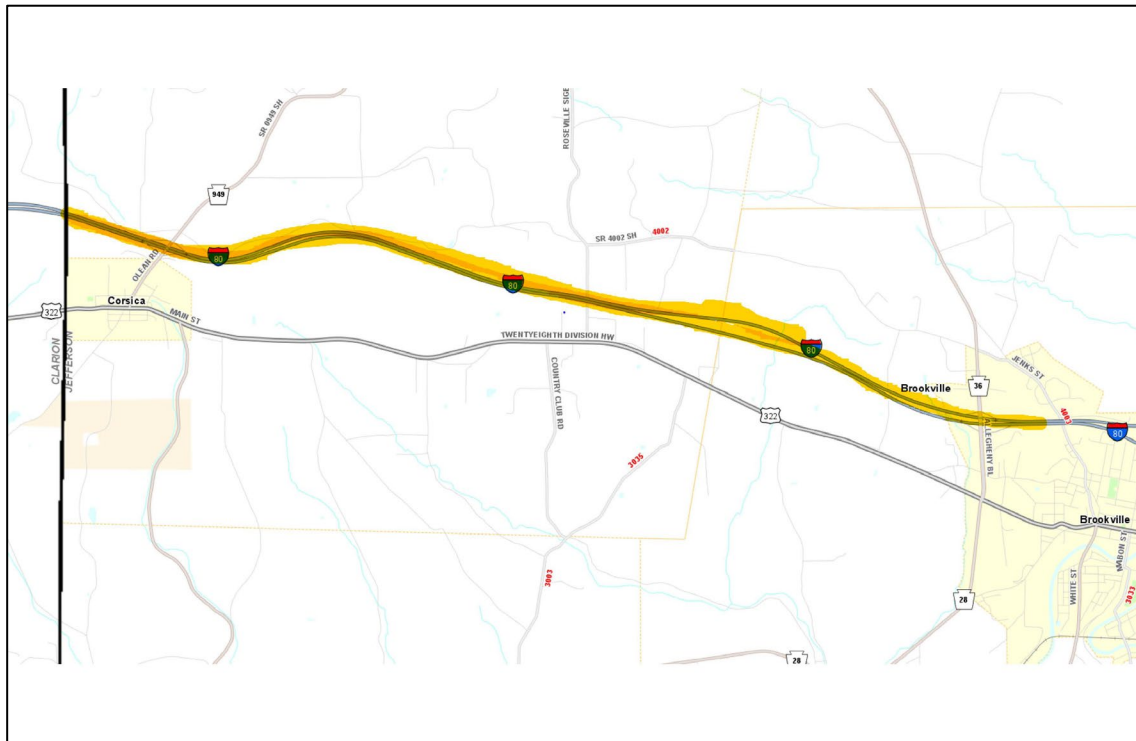
I-80 BROOKVILLE EAST PHASE 3

- I-80
- Bridge Replacements and Interstate Reconstruction Project
- Pine Creek Township
- Construction in TBD
- Construction Estimate: \$150M - \$175M



I-80 BROOKVILLE WEST RECONSTRUCTION

- I-80
- Interstate Reconstruction including 4 overhead structures carrying Routes 36, 949, 4001 over I-80.
- Brookville Borough & Pine Creek Township
- Construction: TBD
- Construction Cost: \$100M - \$150M

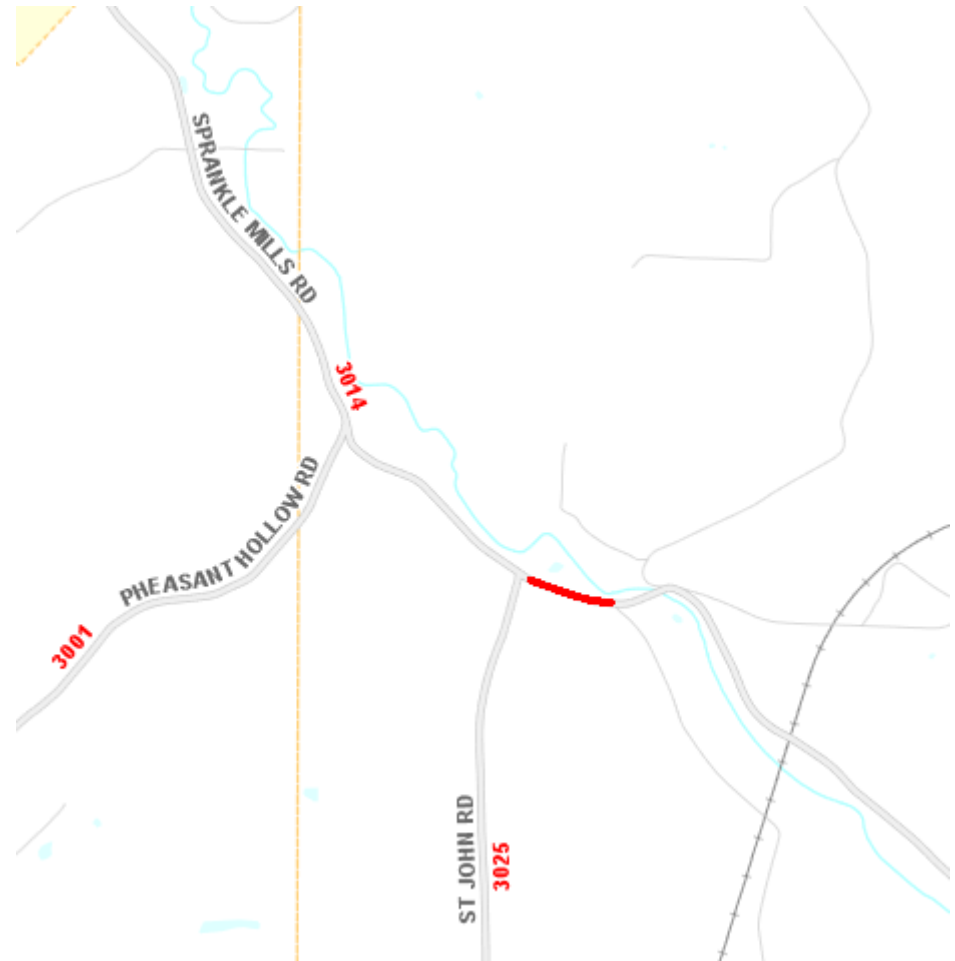


Bridge Projects



ROUTE 3014 SPRANKLE MILLS #2

- Route 3014 over Tributary to Big Run
- Bridge Replacement
- Oliver Township
- Construction in 2027
- Construction Estimate: Less Than \$500K



T-385 OVER BIG RUN

- T-385 Dobson Road
- Local Bridge Removal
- Ringgold Township
- Construction in 2027
- Construction Estimate:
Less Than \$500K



T-396 OVER CODER RUN

- T-396 Seldom Seen Road
- Local Bridge Removal
- Rose Township
- Construction in 2027
- Construction Estimate:
Less Than \$500K



REYNOLDSVILLE BRIDGE #1 TICKLE BELLY

- Route 322 over Sandy Lick Creek
- Bridge Replacement
- Reynoldsville Borough
- Construction in 2028
- Construction Estimate: \$5M- \$7.5M



NEAR COOLSPRING BRIDGE

- Route 3031 (Belshazzar Road) over Lick Run
- Bridge Replacement
- Oliver Township
- Construction in 2028
- Construction Estimate: \$1.0M - \$2.5M



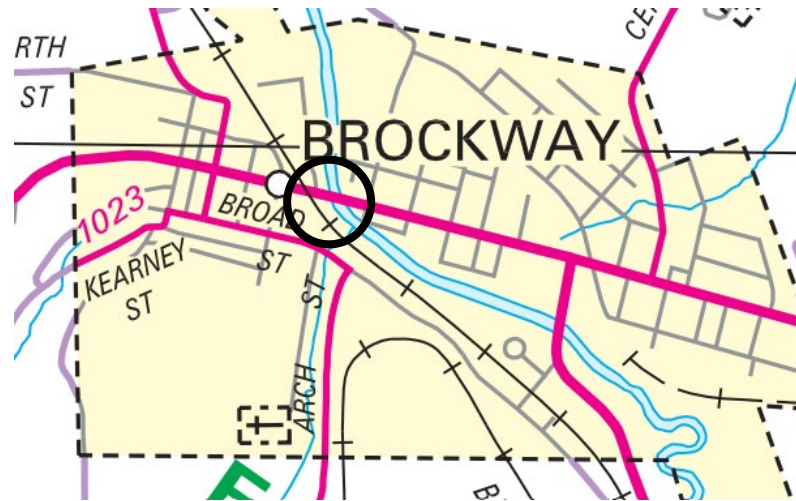
SPRANKLE MILLS BRIDGE NO.1

- Route 3014 (Sprankle Mills Road) over Big Run
- Bridge Replacement
- Oliver Township
- Construction 2029
- Construction Estimate:
\$1.0M - \$2.5M



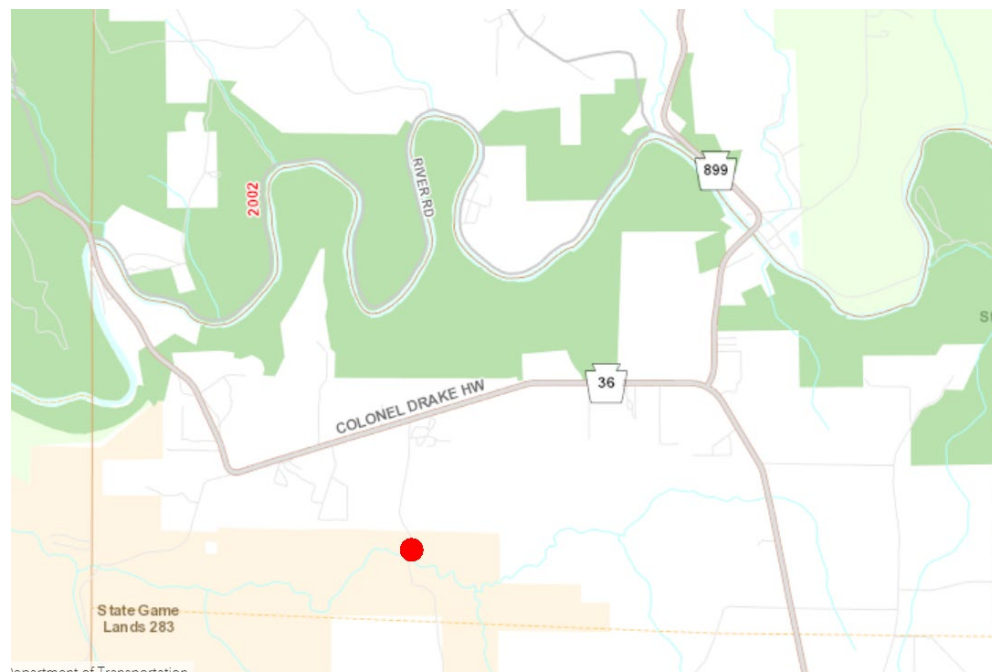
JEFFERSON BRIDGE LATEX GROUP

- Routes 28 over Little Toby Creek
- Route 36 over Redbank Creek
- Bridge Preservation
- Brockway & Brookville Boroughs
- Construction in 2029
- Construction Estimate:
\$1.0M - \$2.5M



T-346 HOMINY BRIDGE

- T-346 (Cathers Run Road) over Cathers Run
- Local Bridge Replacement
- Barnett Township
- Construction TBD
- Construction Estimate: \$1.0M - \$2.5M



MARY A. WILSON BRIDGE

- Route 36 over Mahoning Creek
- Bridge Preservation
- Punxsutawney Borough
- Construction: TBD
- Construction Estimate: \$2.5M - \$5.0M



VALIER BRIDGE REHABILITATION

- Route 3013 over Mahoning Creek
- Bridge Rehabilitation
- Perry Township
- Construction: TBD
- Construction Estimate: \$2.5M - \$5.0M



SOUTH OF ALLENS MILLS

- Route 1830 over Mill Creek
- Bridge Rehabilitation
- Washington & Warsaw Townships
- Construction: TBD
- Construction Estimate: \$1.0M - \$2.5M



PANSY RINGGOLD ROAD BRIDGE

- Route 3003 over Cherry Run
- Bridge Replacement
- Ringgold Township
- Construction TBD
- Construction Estimate: \$1.0M - \$2.5M



JEFFERSON COUNTY MAINTENANCE

**MATT GASTON- COUNTY
MAINTENANCE MANAGER**



Pennsylvania
Department of Transportation

STAFF INTRODUCTION

Matthew Gaston - County Maintenance Manager

Jeremy Snyder - Assistant Highway Maintenance Manager

North Section - Brockway, Brookville, Emerickville

Brandon Stoneberg - Assistant Highway Maintenance Manager

South Section - Ringgold, Punxsutawney

Byron Selfridge - County Equipment Manager

Amber Lowmaster - Roadway Programs Coordinator

(814) 938-6300



25-26 WINTER RECAP

SALT:

- 25-26 WINTER: *12,300 TONS* @ \$82.22=\$1,011,306
- 24-25 WINTER: 12,672 TONS @ \$78.68= \$997,033
- 23-24 WINTER: 5,470 TONS @ \$74.23= \$406,038

ANTI-SKID:

- 25-26 WINTER: *10,276 TONS* @ \$30.60 = \$314,446
- 24-25 WINTER: 12,595 TONS @ \$31.26= \$393,720
- 23-24 WINTER: 3,932 TONS @ \$31.26= \$122,914

MAN HOURS (OVERTIME)

- 25-26 WINTER 6,791 MAN HOURS
- 24-25 WINTER 6,603 MAN HOURS
- 23-24 WINTER: 3,600 MAN HOURS



JEFFERSON COUNTY SECTIONS

Section 1 –Blue

Activities being performed this summer: Seal coating, general maintenance activities, shoulder backup, mowing.

Section 2 - Yellow

Activities being performed this summer: Asphalt paving, pipe replacement, general maintenance activities, brushing, pipe flushing, mowing.

Section 3 – Green

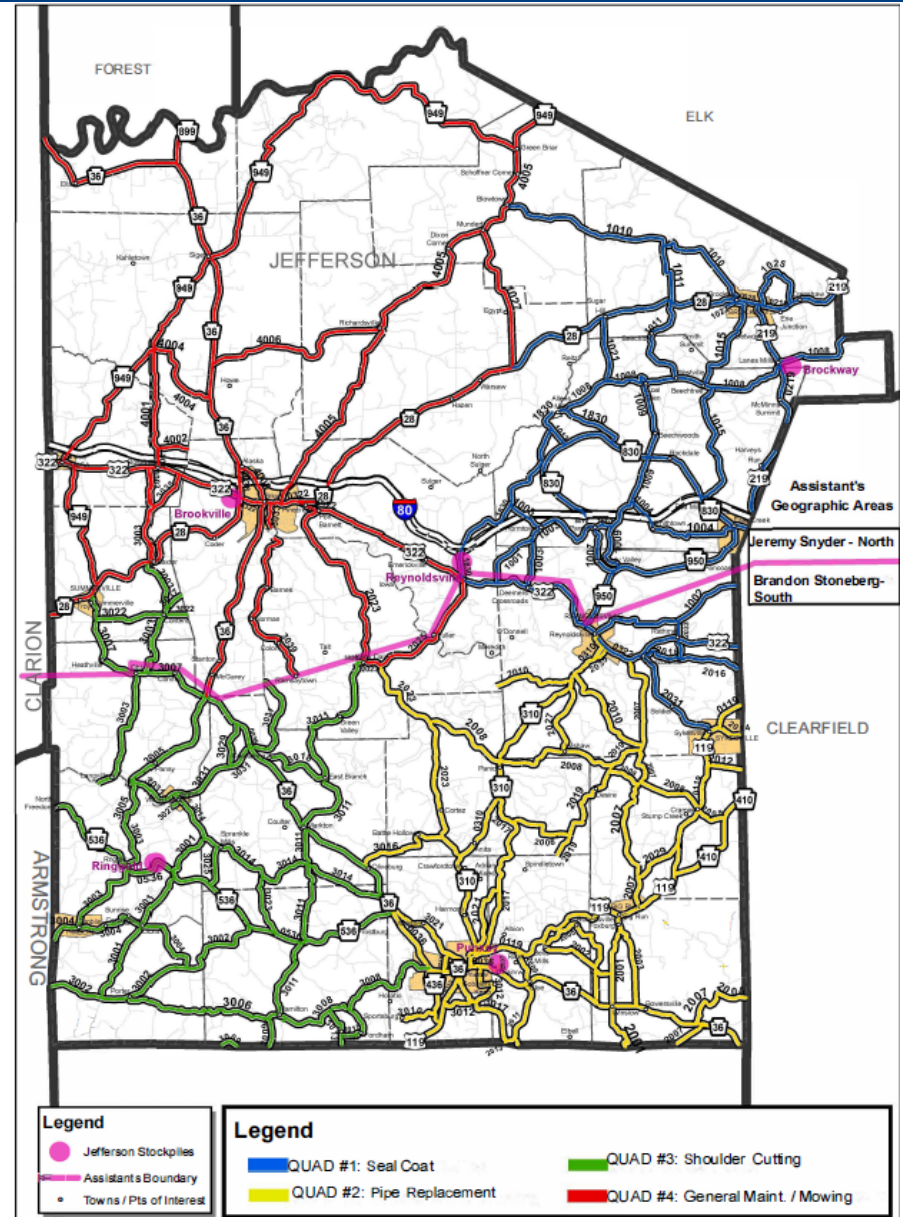
Activities being performed this summer: Shoulder Cutting, general maintenance activities, mowing, crack sealing, patching & pipe replacement/flushing.

Section 4 - Red

Activities being performed: General maintenance, mowing, & patching.

Assistant Managers:

North - Jeremy Snyder
South - Brandon Stoneberg



PIPE REPLACEMENT

Planned for 2026: 3,000 feet
Completed in 2025: 3,180 feet



DITCH CLEANING

Planned for 2026: 33,825 feet
Completed in 2025: 32,340 feet



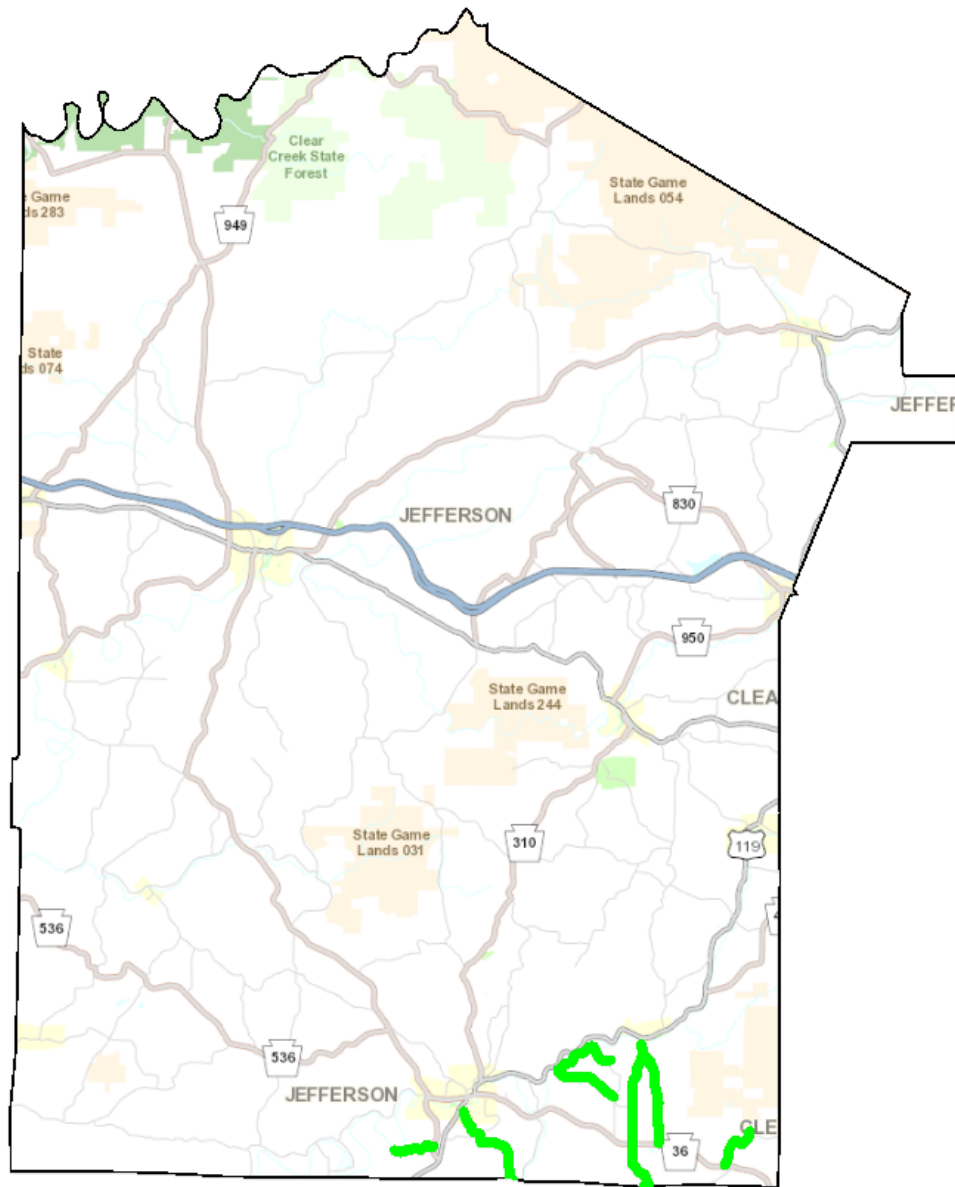
BASE REPAIR & PATCHING

Planned for 2026: 900 tons
Completed in 2025: 710 tons



ASPHALT PAVING

Planned for 2026: 15,400 tons
Completed in 2025: 57,132 tons



SHOULDER CUTTING & GRADING

Planned for 2026: 256 miles Ringgold Quad
Completed in 2025: 87.2 miles Interstate 80




CRACK SEALING

Planned for 2026: 0 miles
Completed in 2025: 87.7 miles



HURDLES

- 
- **Budgets are not increasing.**
 - **Cost of everything is up (material, parts, fuel)**
 - **Employee recruitment/retention**
 - **Employee turnover/experience, retaining the employees we have**
 - **Inventory:**
 - **Increased wait times to replenish supplies**
 - **Equipment deliveries & parts shortages**



LONG-TERM PLAN/GOALS

- Continue with CORE sectional cycle maintenance activities.
 - Shoulder cutting
 - Pipe replacement/drainage
 - Seal coat 5-year cycle
 - Brushing/mowing
 - Crack sealing
- 5th year paving cycle
 - Offset with reduced mill & fill/base repair as needs decrease
 - Improves OPI
 - Improves IRI
- Equipment preservation
 - Repairs & maintenance costs continue to rise
 - Invest in our equipment with preservation in mind



AGILITY

Agility is a tool to build relationships with local communities by sharing & exchanging services & resources.

Possible opportunities are available!

County contact: Matt Gaston: 814-938-6300

District contact: John Copeland: 814-352-3871



JEFFERSON COUNTY

**2026 DISTRICT 10
SPRING OUTREACH
MEETING**



Pennsylvania
Department of Transportation

MUNICIPAL SERVICES

STEVE VASBINDER

– MUNICIPAL SERVICES
SUPERVISOR



Pennsylvania
Department of Transportation

DISTRICT 10

Municipal services contacts

- **Cory Shaffer – Butler, and Western Armstrong County** corshaffer@pa.gov 724-422-1116
- **James Breggenti - Eastern Armstrong and Indiana County** jbreggenti@pa.gov 724-422-1117
- **Marc Skarbek - Jefferson and Clarion County** mskarbek@pa.gov 724-422-1115

Municipal Services Supervisor - Steven Vasbinder
svasbinder@pa.gov 724-970-4413



LIQUID FUELS (LF)

- The LF Rate varies on the amount of LF tax the department receives.
- Calculation based 50% on mileage and 50% on population
 - 2026 the estimated mileage rate is \$3,073.44/mile
 - 2026 estimated Per Capita is \$17.33 of 2020 Census population
 - The two together are your township's 2026 estimate, which will be deposited to your municipality on March 1st if all required paperwork was filed on-time.
- LF money may be used on construction, maintenance and repair of any road, street or bridge for which the municipality is legally responsible.
- All materials used must be PennDOT approved.
- Pub 9 - POLICIES AND PROCEDURES FOR THE ADMINISTRATION OF COUNTY AND MUNICIPAL LIQUID FUELS TAXES - Updated every year.



AGILITY AGREEMENTS

- Enables PennDOT and our eligible partners to exchange services, equipment, and staff without monetary payments.
- Makes the most of limited resources, while developing strong and rewarding relationships.

Must be dollar neutral, trading of services.

Snow plowing, tree cutting, mowing, brooming, training, special piece of equipment, or flushing equipment.



MUNICIPAL AGREEMENTS

Winter Municipal Agreements

- Snow agreements between the Municipality and the County – these are paid in dollars to the municipality
- \$1,389 to \$1,590/mile based on traffic (rates change in June every year)
- Extreme winter adjustment determined by Harrisburg by County (any rate adjustments) in early summer
- Rates typically are a 2% increase year to year

Summer Comprehensive Maintenance Agreements

- These are similar to winter municipal or snow agreements between the Municipality and the County – these are paid in dollars to the municipality
- Mowing, tree trimming, sweeping, etc.



ASSET MANAGEMENT

- **Bridges**
 - Over 20' get inspected but are you looking at your smaller bridges on a yearly cycle? Do you know how many bridges you own?
 - A bridge "structure" is much like your house; preventative maintenance is key. Small issues addressed in a timely manor will extend the structures life exponentially.
- **Drainage**
 - Do you have a list of your drainage? Is anyone looking at your drainage system? Have they been rated?
 - Is there a priority list of drainage issues? Is there a plan for your drainage?
- **Paved Roadways**
 - Someone has spent a lot of your taxpayer's money or maybe grant money on your bigger roadways. Are they being inspected on a schedule?
 - Has the municipality been staying up on the preventive maintenance? Look into pavement preservation. Try not to let roads get to a condition that will cost your municipality a lot of money.
 - Do you have a plan in place to address them before it's too late?
- **Equipment** - has your municipality been maintaining or replacing equipment on any kind of life cycle? Are you applying for LSA grants to upgrade or replace old equipment?
- **Buildings** - has your municipality been maintaining your buildings? Does anyone do an inspection? Preventative maintenance is key; small issues addressed in a timely manor will extend the structures life exponentially.
- **Employees** - They are a huge asset. Are you managing that asset well?

BEST PRACTICES

Good management practices

- When a contractor is on site, whether it's a LF project or a grant situation, be out with them. Be available by phone to answer questions.
- Buying materials: use LF funds when you're sure it's eligible
- PennDOT Pub 213 traffic control – our guide to safe traffic control.
- Questions if we can't get you an answer or you're still confused.
 - Call PSATS - they are very helpful
- Grants – encourage the practice of applying for grants in phases.
 - Drainage and patching in Phase 1
 - Paving a portion in Phase 2
 - Phase 3 finishing the paving or sidewalk
- Hiring a Municipal Engineer by Pub 93 saves you time if you get a large grant.
- LTAP courses are a great resource.



GRANT OPPORTUNITIES

Penn DOT - Multimodal Transportation Fund

Applications accepted annually **Sept 1 to Nov 5**. All applications and all required supplemental information must be electronically submitted by close of business on July 31 for hopeful consideration at the November CFA board meeting.

Can apply for \$100K – 3M. No fee. Municipality must have 30% match. These grants are managed through the eGrant system. This is a reimbursable grant where the municipality spends the money then gets reimbursed when they provide an invoice and proof of payment to the contractor.

Department of Community and Economic Development (DCED)

Applications accepted annually **March 1 and July 31**. The goal is to ensure Pennsylvania is a premier state to do business: where we adopt and innovate the next generation of breakthroughs in a diverse mix of industry clusters; where we cultivate a resilient economy; and where we invest in our people and our communities to build a stronger Pennsylvania.

Can apply for \$100K to 3M. Fee of \$100. Has to be LF eligible. Municipality can submit invoices for payment from the grants prior to paying the contractor.

Local Shared Account LSA - falls under the DCED

The PA Race Horse Development and Gaming Act (Act 2004-71), as amended, provides for the distribution of gaming revenues through the Commonwealth Financing Authority (CFA) to support projects in the public interest within the Commonwealth of Pennsylvania. Applications accepted annually between **Sept 1 to Nov 5**.

Can apply for \$25K to 1M. Fee of \$100. Funding from Horse racing Dev Act. Municipality can submit invoices for payment from the grants prior to paying the contractor.

Keystone log in at <https://grants.pa.gov/Login.aspx>



ATV POLICY

Your municipality can request to use PennDOT roads to connect more of your ATV routes together to create loops and connect ATV users to local businesses and attractions



DATE: May 12, 2025

SUBJECT: Snowmobile and All-Terrain Vehicle Roads Policy

TO: District Executives

FROM: Daniel P. Farley, P.E., Director
Bureau of Operations

This time and resource impacting Strike-off Letter (SOL) revises PennDOT's policy on the designation of Snowmobile and All-Terrain Vehicle (ATV) Roads as described in Chapter 11.13 of Publication 46, Traffic Engineering Manual.

75 Pa. Code §7722 establishes that PennDOT or local authorities may designate roadways under their jurisdiction as a snowmobile road, an ATV road, or both, and may, in its discretion, determine whether such road shall be closed to vehicular traffic or whether snowmobiles or ATVs may share this designated road with vehicular traffic. The law also states that no liability is imposed on PennDOT or local authorities as a result of this designation.

Based on the experience gained from the Pennsylvania Department of Conservation and Natural Resources' (DCNR) regional ATV trail network pilot in northcentral Pennsylvania, PennDOT has revised current policy to allow designation of ATV roads under certain conditions. The attached revised policy is effective immediately and will be incorporated into the next update to PennDOT's Publication 46. Note that minor corrections were also made to the sections which cover snowmobiles that do not materially affect this portion of the policy.

Also attached is the draft version of TE-120 ALL-TERRAIN VEHICLE (ATV) ROAD DESIGNATION ENGINEERING AND TRAFFIC STUDY form. This form may be used immediately to document district analysis and recommendations until a final version is published. The final version will be published to the department website when complete. Additionally, template response letters will be developed for consistent responses to public concerns based on District feedback.

As a follow-up from the statewide ATV policy webinar on Wednesday, May 7, 2025, we request volunteers to form a statewide ATV Work Group to track progress and lessons from ATV road designations and improve this policy over time. Please provide the names and contact information of any volunteers to Robert J. Pentto, P.E., Chief, Traffic Engineering and Permits at (717) 783-6265 or rpentto@pa.gov. The Bureau of Operations will continue to be a resource for ATV issues and any questions or concerns may be directed to Mr. Pentto.

Bureau of Operations
400 North Street, 6th Floor | Harrisburg, PA 17120 | 717-787-6899 | www.penndot.gov

TE-120 (XX-25) **DRAFT**

ALL-TERRAIN VEHICLE (ATV) ROAD DESIGNATION ENGINEERING AND TRAFFIC STUDY

PLEASE TYPE OR PRINT ALL INFORMATION IN BLUE OR BLACK INK



A – LOCATION INFORMATION	
REQUESTING MUNICIPALITY OR ORGANIZATION:	CONTACT NAME, EMAIL AND TELEPHONE:
COUNTY:	
STATE ROAD(S) (List all state roads requested for ATV road designation including limits of designation)	
B – REFERENCE INFORMATION	
REFERENCE: 75 PA C.S.	SECTION(S): §7721, 7722 AND 7723
REFERENCE: PUB 46 Traffic Engineering Manual	SECTION(S): Chapter 11.13 Snowmobiles and All-Terrain Vehicles
C – REQUIREMENTS	
1. Is the request made by the local authority in which the state highway segment is located (or majority thereof); or a regional organization, recognized by both PennDOT and the Pennsylvania Department of Conservation and Natural Resources (DCNR), formed to manage ATV trail networks. <input type="checkbox"/> YES <input type="checkbox"/> NO Remarks:	
2. Has documentation been provided that an ordinance was enacted by any and all local authorities affected by the proposed designation? <input type="checkbox"/> YES <input type="checkbox"/> NO Remarks:	
3. Does the request for ATV road designation include interstates or multilane highways? <input type="checkbox"/> YES <input type="checkbox"/> NO	
4. Will the proposed ATV road act as a connector from or between (1) ATV trails or other state, local or DCNR state forest roads open to ATVs, or (2) Business destinations for ATV traffic such as campgrounds, gas stations, convenience store or restaurants? <input type="checkbox"/> YES <input type="checkbox"/> NO Remarks:	
5. Does an alternative connector exist such as a local or PA DCNR state forest road? <input type="checkbox"/> YES <input type="checkbox"/> NO Remarks:	

Confidential – Traffic Engineering and Safety Study
(For Department Use Only)

This document is the property of the Commonwealth of Pennsylvania, Department of Transportation. The data and information contained herein are part of a traffic engineering and safety study. This safety study is only provided to those official agencies or persons who have responsibility in the highway transportation system and may only be used by such agencies or persons for traffic safety related planning or research. The document and information are confidential pursuant to 75 Pa. C.S. 3754 and 23 U.S.C. 409 and may not be published, reproduced, released, or discussed without the written permission of the Pennsylvania Department of Transportation.



Free training and technical assistance on local transportation issues:

- Pavement Preservation
- Traffic Calming/Speed Management
- Pavement Markings, **Signs**, and Signals
- Stormwater/Drainage
- Asset Management
- Winter Maintenance
- Pedestrians/Bicycles/Trails/ADA
- School Transportation
- Drones/GIS
- Trucks on Local Roads



Pennsylvania
Department of Transportation
Local Technical Assistance Program



DISTRICT 10

Municipal services contacts

- **Cory Shaffer – Butler, and Western Armstrong Co**
corshaffer@pa.gov 724-422-1116
- **James Breggenti - Eastern Armstrong and Indiana County**
jbreggenti@pa.gov 724-422-1117
- **Marc Skarbek - Jefferson and Clarion County**
mskarbek@pa.gov 724-422-1115

Municipal Services Supervisor - Steven Vasbinder
svasbinder@pa.gov [724-970-4413](tel:724-970-4413)



RESOURCES

TINA GIBBS

– COMMUNITY RESOURCES
COORDINATOR



DISTRICT 10 WEB RESOURCES

- New website for Commonwealth agencies
 - [District 10 | Department of Transportation | Commonwealth of Pennsylvania](https://www.pa.gov/agencies/penndot/regional-offices/district-10.html) (<https://www.pa.gov/agencies/penndot/regional-offices/district-10.html>)
- Outreach documents will be posted under the District 10 Outreach link
 - Doing Business with PennDOT Resource Guide
 - Spring Outreach Meeting presentations & maps

ARMSTRONG • BUTLER • CLARION • INDIANA • JEFFERSON

Engineering District 10

PennDOT's Engineering District 10 is responsible for the state-maintained transportation network across Armstrong, Butler, Clarion, Indiana, and Jefferson Counties. This includes 3,180 total road miles and 1,630 total bridges.

We also work with local governments, elected officials, stakeholders and the public on keeping people and goods moving safely and efficiently in this region.



[View District 10 Contacts](#)

[View District 10 Projects](#)

A screenshot of the PennDOT District 10 website. On the left is a navigation menu for the Pennsylvania Department of Transportation, with 'District 10' highlighted and an orange arrow pointing to 'District 10 Outreach'. The main content area features a search bar, a 'Sort & Filter' button, and a list of news items. The first news item is 'PennDOT Reduces Speed Limit to 55 mph on I-80 in Clarion and Jefferson Counties' dated January 28, 2025, with tags for Clarion County, Jefferson County, District 10, and Department of Transportation. The second news item is 'PennDOT Extends the Length of the Speed Limit Restrictions on I-80 in Clarion and Jefferson Counties' dated January 14, 2025, with similar tags. The third news item is 'PennDOT Reduces Speed Limit to 45 mph on I-80 in Clarion and Jefferson Counties' dated January 16, 2025, also with similar tags. On the right side, there is a contact information box for PennDOT District 10, including the address (2550 Oakland Avenue, Indiana, PA 15701), phone (724-357-2800), fax (724-357-2084), and press office (724-357-2829). Below this is a 'Subscribe to District 10 News' section with an email input field and a 'Public Resources' section with a link to 'Clarion River Bridge Rehabilitation Brings Weather-Dependent Lane'.

CONNECT WITH DISTRICT 10

Website:

[District 10 | Department of Transportation | Commonwealth of Pennsylvania](https://www.pa.gov/agencies/penndot/regional-offices/district-10.html)
(<https://www.pa.gov/agencies/penndot/regional-offices/district-10.html>)

Subscribe to District 10 news:

To receive emails when a press release is posted to the website, enter your email address into the "Subscribe to District 10 News" box on our District 10 home page.

Join our Groups on Facebook:

[Pittsburgh PennDOT](#)
[Northwest PennDOT](#)

X (Twitter):

[@511PA Erie](#)
[@511PA Pittsburgh](#)

District 10 contacts

District Executive, Brian Allen - 724-357-2806

Assistant District Executive - Construction, Paul Koza, Jr. - 724-357-2812

Assistant District Executive - Design, Alice Hammond - 724-357-2805

Assistant District Executive - Maintenance, Matthew Burkett - 724-357-2809

Community Relations Coordinator, Tina Gibbs - 724-357-2829

District Office (10-0)

2550 Oakland Avenue
Indiana, PA 15701
724-357-2800

*Standard hours of operation
are 8:00 AM to 4:30 PM*

