

**INDIANA COUNTY**

**2026 DISTRICT 10  
SPRING OUTREACH  
MEETING**



Pennsylvania  
Department of Transportation

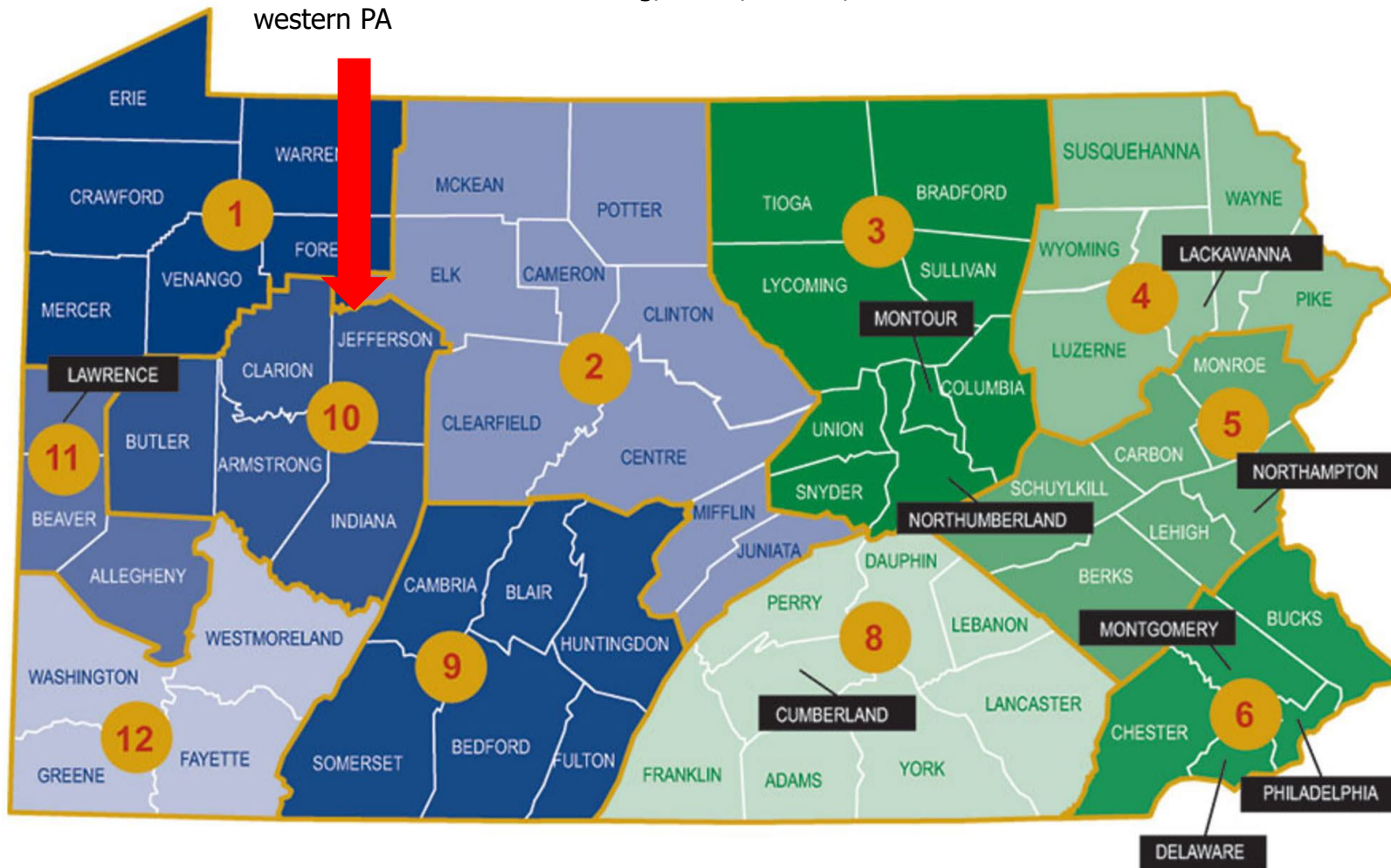
# INTRODUCTIONS

- **BRIAN ALLEN, DISTRICT EXECUTIVE**
  - **WELCOME AND INTRODUCTIONS**
  - **DISTRICT 10 OVERVIEW**
- **PAUL KOZA, ASSISTANT DISTRICT EXECUTIVE - CONSTRUCTION**
  - **PROJECTS IN CONSTRUCTION**
- **ALICE HAMMOND, ASSISTANT DISTRICT EXECUTIVE - DESIGN**
  - **PROJECTS IN DESIGN**
- **AARON EMHOFF, INDIANA COUNTY MAINTENANCE MANAGER**
  - **COUNTY MAINTENANCE OVERVIEW**
- **STEVE VASBINDER, MUNICIPAL SERVICES SUPERVISOR**
  - **MUNICIPAL SERVICES OVERVIEW**
- **TINA GIBBS, DISTRICT COMMUNITY RELATIONS COORDINATOR**
  - **WEBSITE RESOURCES & SOCIAL MEDIA**



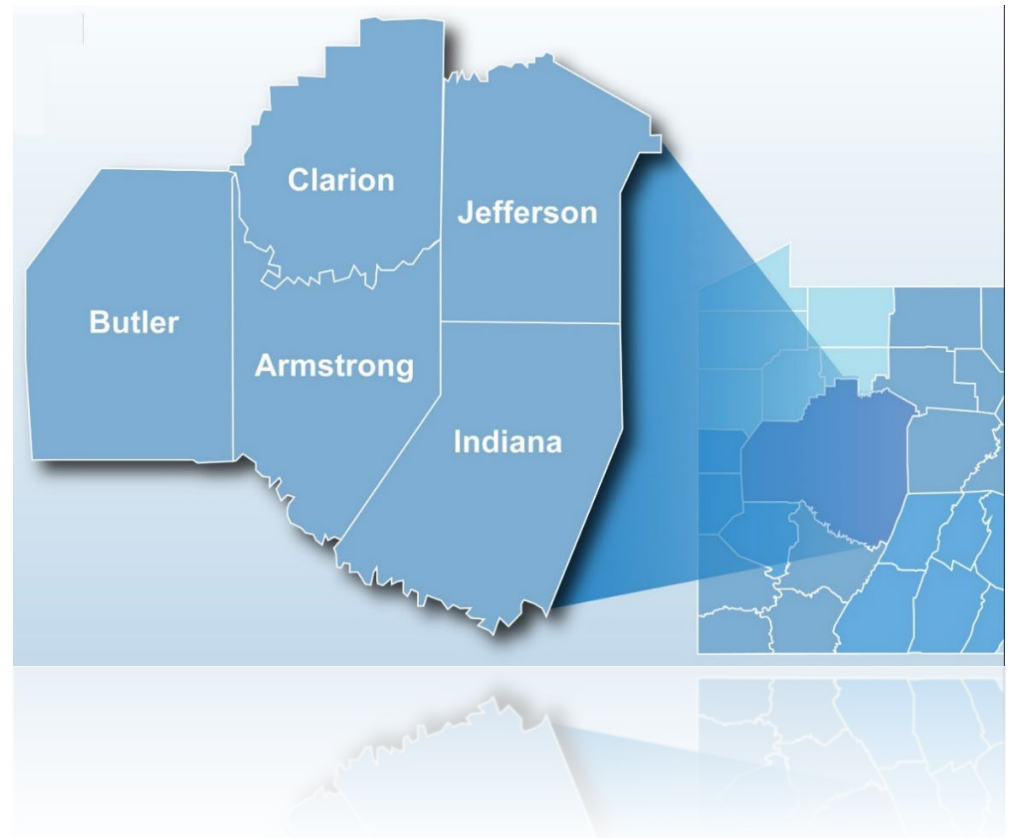
# WHERE IS DISTRICT 10?

District 10 consists of Armstrong, Butler, Clarion, Indiana & Jefferson Counties in western PA



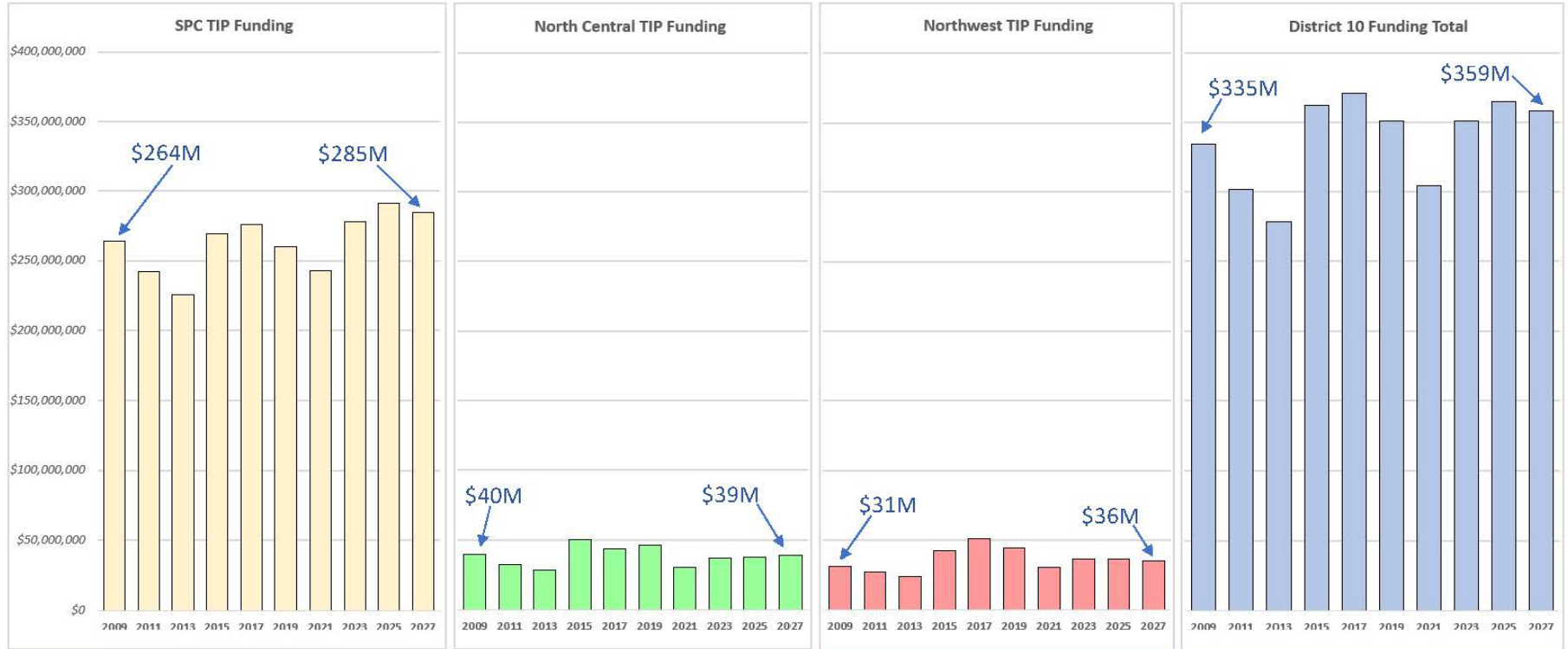
# DISTRICT 10 OVERVIEW

- 5 counties
- 800 employees
- 1,624 bridges
- 7,117 lane miles
- 7,006 snow lane miles
  
- The 2026 construction and maintenance season in District 10 includes:
  - 64 construction projects
  - 413 miles of seal coating
  - nearly 1,190 miles of shoulder cutting



# TIP FUNDING ALLOCATION

## District 10's TIP Funding Allocation Over Time



TIP Funding Cycle	SPC TIP Funds	North Central TIP Funds	Northwest TIP Funds	District Total TIP Funds
2009	\$264,116,000	\$9,510,000	\$31,086,000	\$334,714,000
2011	\$242,108,000	\$9,457,000	\$26,978,000	\$278,543,000
2013	\$225,718,000	\$2,478,000	\$24,131,000	\$276,025,000
2015	\$269,461,000	\$5,496,000	\$42,624,000	\$327,581,000
2017	\$276,000,000	\$48,468,000	\$51,484,000	\$375,952,000
2019	\$260,054,000	\$46,466,000	\$44,767,000	\$351,277,000
2021	\$243,157,000	\$9,573,000	\$9,615,000	\$304,965,000
2023	\$277,806,000	\$36,910,000	\$36,601,000	\$351,117,000
2025	\$280,282,000	\$37,334,000	\$36,468,000	\$354,074,000
2027	\$284,051,000	\$9,677,000	\$35,969,000	\$329,697,000

\*Data is based on the following: 2027 allocations reflect District allocations as of 1-20-2026. 2011-2027 data is per original Financial Guidance from Mark Tobin. 2009 is existing District data. This document can be found at the following location: J:\Design\Planning and Programming\DM DeFazio\TIP Funding Over Time Graph 2027\_Final.pptx

By: Dominic M. DeFazio  
1-20-2026



# CONSTRUCTION

PAUL KOZA – ADE  
CONSTRUCTION



Pennsylvania  
Department of Transportation

# INDIAN SPRINGS RD/RUSTIC LODGE RD INT

- Route 4422
- White Township
- Cost: \$4,308,326
- Anticipated Completion: 10/2/2026
- Prime Contractor: Ligonier Construction Company
- Intersection Improvements
- Night Work 6PM – 6AM



# ROUTE 22 PED/BIKE BRIDGE

- Burrell Township
- Cost: \$4,732,000
- Anticipated Completion: 6/18/2026
- Prime Contractor: Merlo, Inc.



# DILLTOWN BRIDGE NO 3

- Route 2012
- Buffington & East Wheatfield Townships
- Cost: \$3,933,000
- Anticipated Completion: Fall 2027
- Prime Contractor: Merlo, Inc.
- Two Bridge Replacements
- Detours:
  - Pleasant Valley (2026)
  - Dilltown (2027)

Dilltown No 3



Pleasant Valley



# KINTERSBURG COVERED BRIDGE REHAB

- Rayne Township
- Cost: \$807,314
- Anticipated Completion:  
7/6/2026
- Prime Contractor:  
Horizon Construction Group, Inc.
- Bridge Rehabilitation



# BROADHEAD RUN BRIDGE #2

- Route 1045
- Canoe Township
- Cost: \$1,367,000
- Anticipated Completion: 10/27/2026
- Prime Contractor: Merlo, Inc.
- Bridge Replacement
  - 84 Day Detour



# ANTHONY RUN BRIDGE #2

- Route 3039
- Armstrong Township
- Cost: \$1,175,710
- Anticipated Completion: 9/25/2026
- Prime Contractor: Plum Contracting, Inc.
- Bridge Replacement
  - 79 Day Detour



# REARICK ROAD BRIDGE # 1

- Route 3010
- Young Township
- Cost: \$1,333,010
- Anticipated Completion:  
9/28/2026
- Prime Contractor: Francis J.  
Palo, Inc.
- Bridge Replacement
- 114 Day Detour
  - April 6 to July 29
- Digital Delivery



# ROUTE 286 OVER TRIBUTARY TO CHERRY RUN

- Route 286
- White Township
- Cost: \$1,993,886
- Anticipated Completion: Fall 2026
- Prime Contractor: Plum Contracting, Inc.
- Bridge Replacement
- Peak Hour & Sexton Road
  - 133 Day Detour



# INDIANA GROUP 104-26-SIA

- Routes 217, 2003, 286, & 8002
- Various Townships
- Cost: \$3,197,402
- Anticipated Completion: Fall 2026
- Prime Contractor: Derry Construction
- Resurfacing



# ARMSTRONG GROUP 101-26-SIA

- Routes 85, 954, and 422
- Various Boroughs & Townships
- Cost Estimate: \$2.5M – \$5M
- Let Date: 4/23/2026
- Resurfacing and Patching



# JACKSONVILLE BRIDGE #1

- Route 286
- Blacklick Township
- Cost Estimate: \$1M  
- \$2.5M
- Let Date: 8/27/2026
- Bridge Replacement  
2027
- Phased Construction  
on Route 286 &  
Aultman Run Road
- Detour



# 2026 DISTRICT 10 HFST

- District Wide
- Cost: \$1,949,197
- Anticipated Completion: 10/30/2026
- Prime Contractor: MEKIS Construction Corporation
- Safety Improvement



# 2026 COUNTY GUIDERAIL

- County Wide Projects  
Various Routes
- Cost: \$858,730
- Anticipated Completion:  
12/31/2027
- Prime Contractor: Penn  
Line Service, Inc.
- Repair and  
Replacement of Guiderail



# 2026 DISTRICT 10 SMALL PAINT

- District Wide
- Cost Estimate: < \$1M
- Let Date: 5/7/2026
- Paint Legend Replacement



# DESIGN

ALICE HAMMOND – ADE  
DESIGN

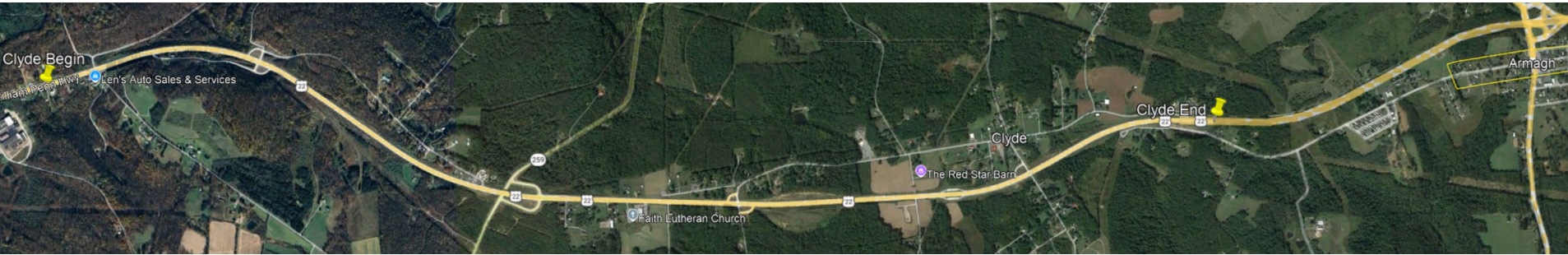


Pennsylvania  
Department of Transportation

# Roadway Projects



# ROUTE 22 CONCRETE PRES. - CLYDE



- Route 22 (from T-723 Kettle Hollow Road to Route 2024 Philadelphia Street)
- Preventative Maintenance including slab stabilization, full depth patching, and joint sealing
- West & East Wheatfield Townships
- Construction in 2027
- Construction Estimate: \$7.5M - \$10.0M



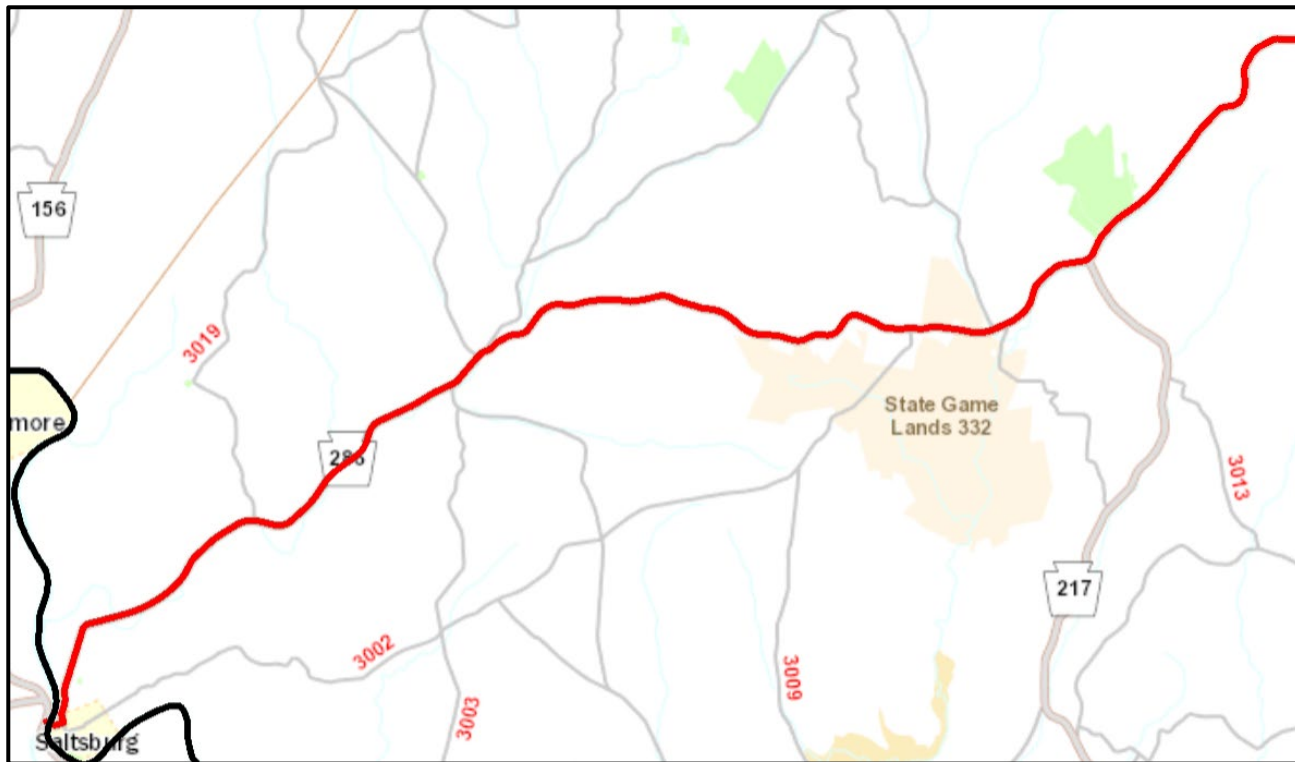
# ROUTE 403/ROUTE 22 PARK AND RIDE

- Route 403
- Brush Valley Township
- Park and Ride Lot
- Construction Funding 2027
- Construction Estimate:  
\$500K - \$1.0M

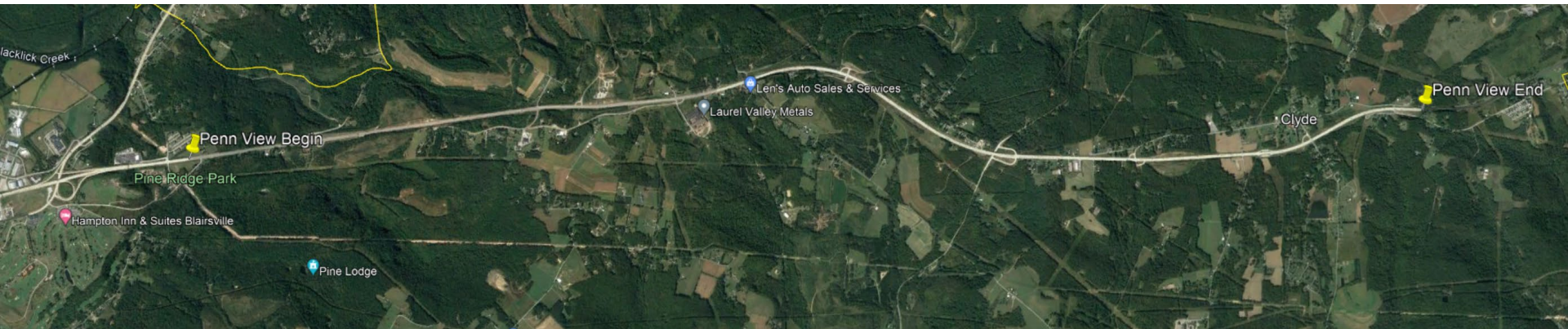


# ROUTE 286 SALTSBURG EAST

- Route 286
- Surface Improvement Program (SIP)
- Saltsburg Borough, Conemaugh, Young, Blacklick, White and Center Townships
- Construction in 2027
- Construction Estimate: \$7.5M - \$10.0M



# ROUTE 22 PENN VIEW PM

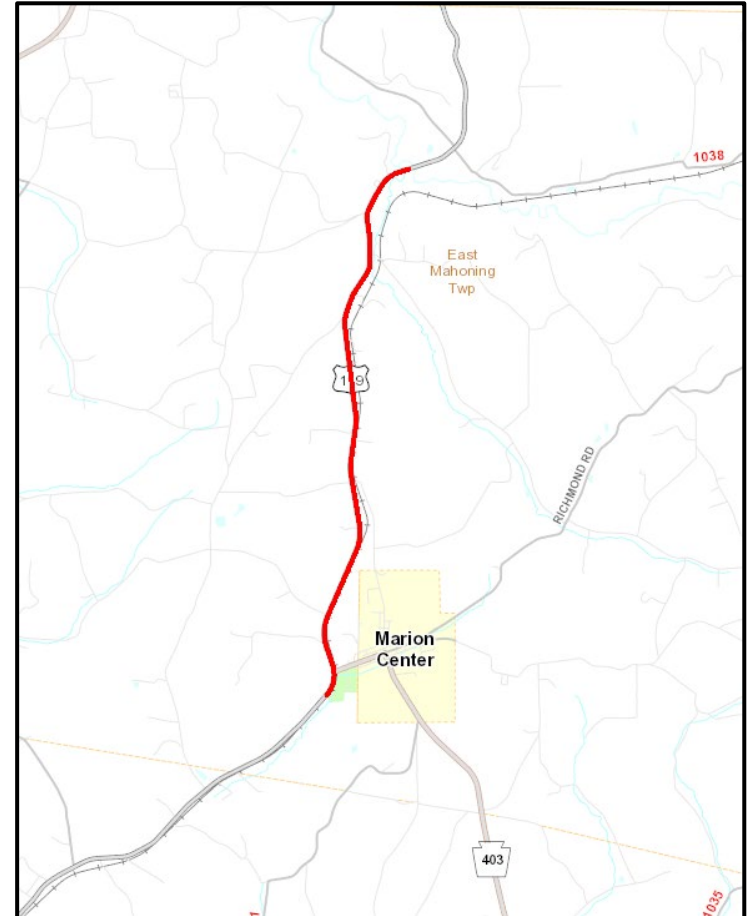


- Route 22 (from T-586 Snyder Lane to T-723 Kettle Hollow Road)
- Preventative Maintenance including minor drainage, patching, guiderail upgrades and pavement overlay
- Burrell and West Wheatfield Townships
- Construction in 2028
- Construction Estimate: \$7.5M - \$10.0M



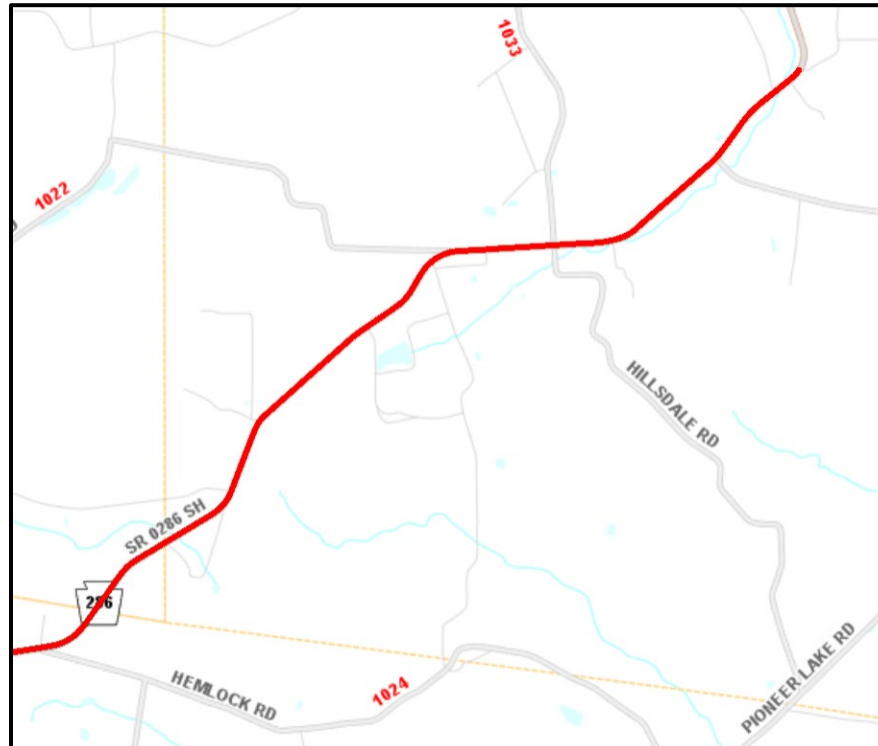
# ROUTE 119 MARION CENTER

- Route 119 (from Yellow Run Road North to Little Mahoning Creek)
- Surface Improvement Program (SIP) - including milling/patching and micro-surfacing
- East Mahoning Township
- Construction in 2028
- Construction Estimate: \$1.0M - \$2.5M



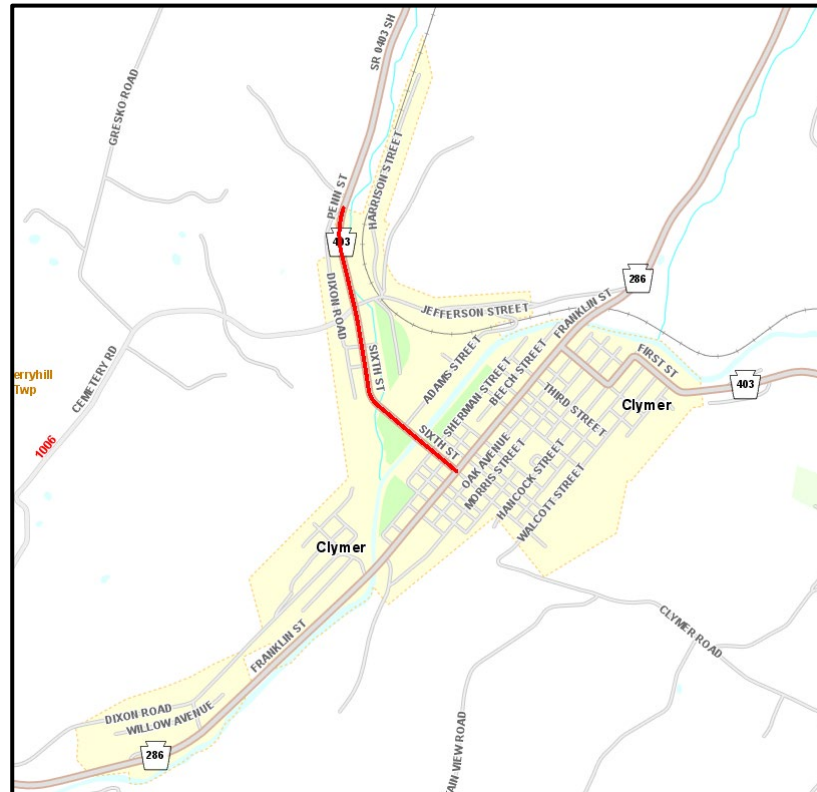
# ROUTE 286 HILLSDALE

- Route 286 Hillside Resurfacing (from Route 1024 Hemlock Road to Cush Creek Road)
- Surface Improvement Program (SIP) including milling and overlay with minor drainage and guiderail upgrades
- Green, Grant & Montgomery Townships
- Construction in 2028
- Construction Estimate: \$1.0M - \$2.5M



# ROUTE 403 CLYMER

- Route 403 Resurfacing (from Route 286 to Dixon Road)
- Surface Improvement Program (SIP)
- Clymer Borough
- Construction in 2028
- Construction Estimate: Less Than \$0.5M

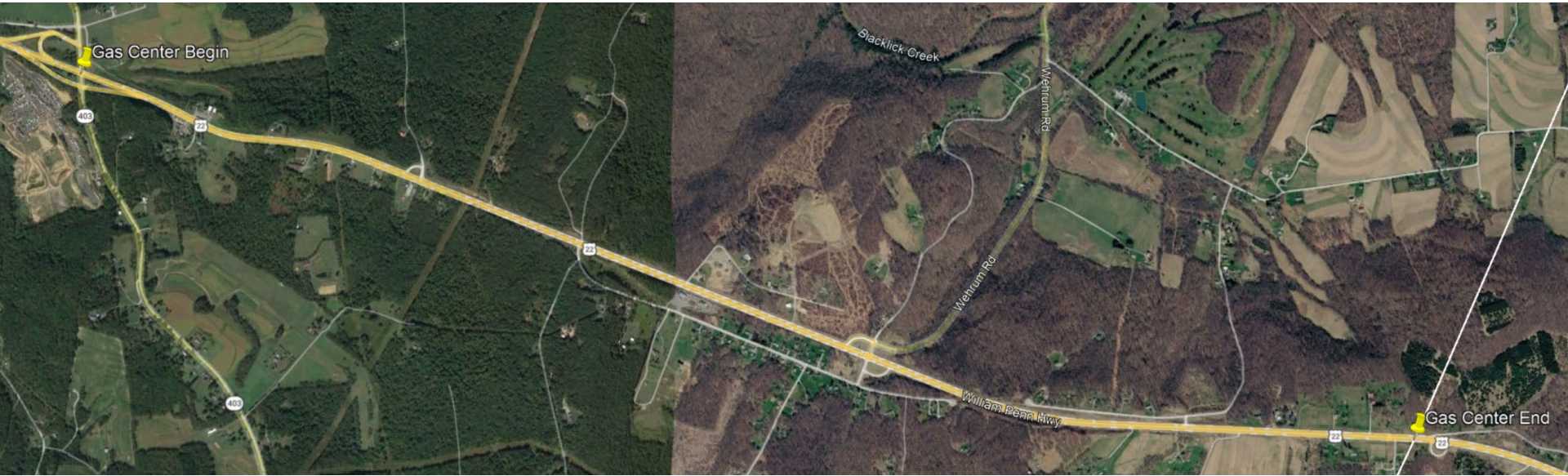


# US 119 OVER CROOKED CREEK & PINE RUN



- Route 119
- Realignment, Bridge Replacements (Crooked Creek & Pine Run)
- Rayne Township
- Construction: 2029
- Construction Estimate: \$10.0M – \$20.0M

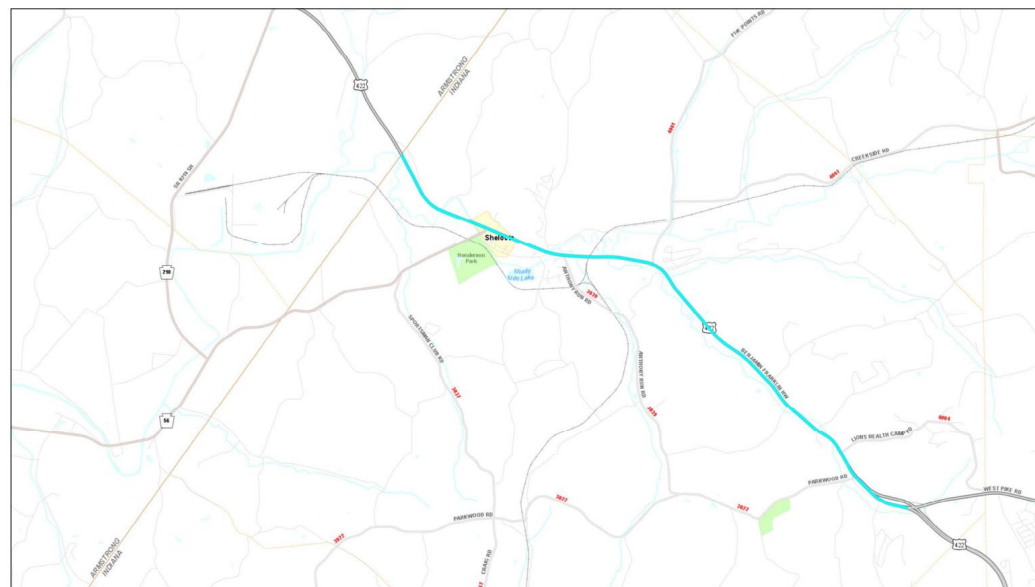
# ROUTE 22 GAS CENTER PM



- Route 22 (from Route 403 interchange to Cambria County Line)
- Preventative Maintenance including milling, overlay, minor drainage improvements and Guiderail upgrades
- East Wheatfield Township
- Construction in 2030
- Construction Estimate: \$10.0M - \$12.5M

# ROUTE 422 ARMSTRONG COUNTY LINE TO INDIANA BYPASS

- Route 422
- Reconstruction
- Shelocta Borough & Armstrong Township
- Construction Phase: TBD
- Construction Estimate: \$20.0M - \$25.0M



# Bridge Projects



# JACKSONVILLE BRIDGE #1

- Route 286 over Reeds Run
- Bridge Replacement
- Blacklick & Young Townships
- Construction in 2027
- Construction Estimate: \$1.0M - \$2.5M



# BRIDGES TO NOWHERE EB/WB

- Route 422 over Route 4422  
Ben Franklin Road, Route  
4005 Indian Springs Road,  
Route 3035 Old Route 119  
and the Buffalo and  
Pittsburgh Railroad
- Bridge Rehabilitation
- White Township
- Construction in 2027
- Construction Estimate:  
\$30.0M - \$40.0M



# ROUTE 3017 OVER CHERRY RUN

- Route 3017 Cherry Run Road over Cherry Run
- Bridge Replacement
- Center Township
- Construction 2028
- Construction Estimate: \$1.0M - \$2.5M



# STEWART RUN

- Route 3013 Blacklick Road over Stewart Run
- Bridge Replacement
- Blacklick Township
- Construction in 2028
- Construction Estimate:  
\$1.0M - \$2.5M



# MUDDY RUN BRIDGE NO.3

- Route 3013 Blacklick Road over Muddy Run
- Bridge Replacement
- Blacklick Township
- Construction in 2028
- Construction Estimate: \$1.0M - \$2.5M



# ROSSMOYNE BRIDGE #1

- Route 210 over Tributary to Ross Run
- Bridge Replacement
- South Mahoning Township
- Construction 2028
- Construction Estimate:  
\$1M - \$2.5M



# ROUTE 580 MCKEAGES CROSSING

- Route 580 over Cushion Creek
- Bridge Replacement
- Green Township
- Construction in 2029
- Construction Estimate: \$1.0M to \$2.5M



# ROUTE 119 OVER PINE RUN

- Route 119
- Bridge Replacement
- East Mahoning Township
- Construction in 2029
- Construction Estimate:  
\$2.5M - \$5.0M



# FULTON RUN ROAD BRIDGE

- Route 954 over Crooked Creek
- Bridge Replacement
- White Township
- Construction 2030
- Construction Estimate:  
\$1.0M - \$2.5M



# MCCORMICK ROAD BRIDGE

- Route 4018 McCormick Road over Tributary to Little Mahoning Creek
- Bridge Replacement
- West Mahoning Township
- Construction in 2030
- Construction Estimate: \$500K - \$1.0M



# IDAMAR BRIDGE NO. 2

- Route 1035 Dixonville Road over Tributary to Dixon Run
- Bridge Replacement
- Rayne Township
- Construction in 2030
- Construction Estimate: \$500K - \$1.0M



# COAL RUN

- Route 3002 Saltsburg Road over Coal Run
- Bridge Replacement
- Young Township
- Construction in 2030
- Construction Estimate: \$500K - \$1.0M



# DECKER'S POINT NO. 1

- Route 1020 over Little Mahoning Creek
- Bridge Replacement
- Grant Township
- Construction in 2030
- Construction Estimate: \$500K - \$1.0M



# ROUTE 119 OVER ROUTE 8001 NB & SB

- Route 119
- Bridge Replacement & Ramp Extension
- White Township
- Construction in 2030
- Construction Estimate: \$20.0M - \$25.0M



# STONEY RUN BRIDGE #1

- Route 119 over Stoney Run
- Bridge Rehabilitation
- Center Township
- Construction in 2030/2031
- Construction Estimate: \$5.0M - \$7.5M



# ROUTE 119 OVER TWO LICK CREEK

- Route 119
- Bridge Rehabilitation
- Center Township
- Construction in 2030/2031
- Construction Estimate:  
\$7.5M - \$10.0M



# ROUTE 119 SULLIVAN NB/SB BRIDGES

- Route 119 over Route 954
- Bridge Replacements
- White Township
- Construction TBD
- Construction Estimate: \$10.0M to \$20.0M



# ROUTE 119 LUTZ SCHOOL ROAD NS/SB

- Route 119 Northbound and Southbound over Route 1003 Lutz School Road
- Bridge Replacements
- White Township
- Construction TBD
- Construction Estimate: \$10.0M to \$20.0M



# ROUTE 119 HAMILL NB/SB BRIDGES

- Route 119 Northbound and Southbound over Route 286
- Bridge Replacements
- White Township
- Construction: TBD
- Construction Estimate: \$5.0M - \$7.5M



# ROUTE 1012 DIAMONDDVILLE BRIDGE NO.1

- Route 1012 Starford Road over Two Lick Creek
- Bridge Replacement
- Cherryhill Township
- Construction TBD
- Construction Estimate: \$1.0M - \$2.5M



# FIRST SGT. ALEXANDER KELLY MEMORIAL BRIDGE

- Route 286 Washington Street over Kiskiminetas River
- Bridge Replacement
- Saltsburg Borough
- Construction: TBD
- Construction Estimate: \$10M - \$20.0M



# CREEKSIDER BRIDGE NO.1

- Route 110 over Crooked Creek
- Bridge Replacement
- Creekside Borough
- Construction: TBD
- Construction Estimate: \$1.0M - \$2.5M



# BLACKLEGS HOOPER BRIDGE

- Route 3025 Park Drive over Blacklegs Creek
- Bridge Replacement
- Young Township
- Construction: TBD
- Construction Estimate: \$1.0M - \$2.5M



# TORRANCE BRIDGE PRESERVATION

- Route 217 over Conemaugh River
- Bridge Preservation
- Burrell Township
- Construction: TBD
- Construction Estimate: \$1M - \$2.5M



# BUENA VISTA BRIDGE PRESERVATION

- Route 56 over Blacklick Creek and Conrail Railroad
- Bridge Preservation
- East Wheatfield Township
- Construction: TBD
- Construction Estimate: \$2.5M - \$5.0M



# BAIRDSTOWN TRUSS PRESERVATION

- Route 2002 Market Street over Conemaugh River
- Bridge Preservation
- Blairsville Borough
- Construction: TBD
- Construction Estimate: \$1M - \$2.5M



# COY BRIDGE #2

- Route 2019 Fire Academy Road over Tearing Run
- Bridge Replacement
- Center Township
- Construction: TBD
- Construction Estimate: \$1.0 - \$2.5M



# DAVIS BRIDGE #2

- Route 4006 Five Points Road over South Branch of Plum Creek
- Bridge Replacement
- Washington Township
- Construction: TBD
- Construction Estimate: \$1.0 - \$2.5M



# INDIANA COUNTY MAINTENANCE

AARON EMHOFF - COUNTY  
MAINTENANCE MANAGER



Pennsylvania  
Department of Transportation

# COUNTY CONTACTS

County Maintenance Manager – Aaron Emhoff

Assistant County Manager - Dave Bocz

Assistant County Manager - Mike Hicks

Assistant County Manager - Chris Forsha

Equipment Manager - Chris Long

Roadway Programs Coordinator – Stephanie Johnson

Adopt a Highway Coordinator – Beth Hudson

2550 Oakland Avenue  
Indiana, PA 15701  
724.357.2817



# INDIANA COUNTY WINTER

2024-2025 County maintenance budget (personnel & operations)	\$22,480,135
Salt usage 2024 - 25	11,606 tons = \$1,052,714
Anti-skid usage 2024 - 25	11,869 tons = \$389,704
Brine usage 2024 - 25	165,573 gallons = \$57,951
Salt usage 2023 - 24	13,969 tons
Anti-skid usage 2023 - 24	12,381 tons
Brine usage 2023 - 24	211,137 gallons

# WINTER MUNICIPAL AGREEMENTS

MUNICIPALITY	MILES COVERED
EAST MAHONING TOWNSHIP	.552
SALTSBURG BOROUGH	1.774



# PIPE REPLACEMENT

Pipe replacement planned for 2026 = 2,920 feet

Pipe replacement in 2025 = 2,770 feet



# PIPE FLUSHING

Pipe flushing planned for 2026 = 24,419 feet

Pipe flushing in 2025 = 32,432 feet



# DITCH CLEANING

Ditch cleaning planned for 2026 = 17,400 feet

Ditch cleaning in 2025 = 11,605 feet



# BASE REPAIR

Base repair patching 2026 = 21,965 tons

Base repair patching 2025 = 24,305 tons



# CRACK SEALING

Crack sealing roads & shoulders planned for 2026 = 155 miles

Crack sealing roads & shoulders in 2025 = 136.5 miles



# BRIDGE MAINTENANCE



Route 2024



Route 217



Route 210

# MUNICIPAL SERVICES

STEVE VASBINDER

– MUNICIPAL SERVICES  
SUPERVISOR



Pennsylvania  
Department of Transportation

# DISTRICT 10

## Municipal services contacts

- **Cory Shaffer – Butler, and Western Armstrong County** [corshaffer@pa.gov](mailto:corshaffer@pa.gov) 724-422-1116
- **James Breggenti - Eastern Armstrong and Indiana County** [jbreggenti@pa.gov](mailto:jbreggenti@pa.gov) 724-422-1117
- **Marc Skarbek - Jefferson and Clarion County** [mskarbek@pa.gov](mailto:mskarbek@pa.gov) 724-422-1115

**Municipal Services Supervisor - Steven Vasbinder**  
[svasbinder@pa.gov](mailto:svasbinder@pa.gov) 724-970-4413



# LIQUID FUELS (LF)

- The LF Rate varies on the amount of LF tax the department receives.
- Calculation based 50% on mileage and 50% on population
  - 2026 the estimated mileage rate is \$3,073.44/mile
  - 2026 estimated Per Capita is \$17.33 of 2020 Census population
    - The two together are your township's 2026 estimate, which will be deposited to your municipality on March 1st if all required paperwork was filed on-time.
- LF money may be used on construction, maintenance and repair of any road, street or bridge for which the municipality is legally responsible.
- All materials used must be PennDOT approved.
- Pub 9 - POLICIES AND PROCEDURES FOR THE ADMINISTRATION OF COUNTY AND MUNICIPAL LIQUID FUELS TAXES - Updated every year.



# AGILITY AGREEMENTS

- Enables PennDOT and our eligible partners to exchange services, equipment, and staff without monetary payments.
- Makes the most of limited resources, while developing strong and rewarding relationships.

Must be dollar neutral, trading of services.

Snow plowing, tree cutting, mowing, brooming, training, special piece of equipment, or flushing equipment.



# MUNICIPAL AGREEMENTS

## Winter municipal agreements

- Snow agreements between the Municipality and the County – these are paid in dollars to the municipality
- \$1,389 to \$1,590/mile based on traffic (rates change in June every year)
- Extreme winter adjustment determined by Harrisburg by County (any rate adjustments) in early summer
- Rates typically are a 2% increase year to year

## Summer Comprehensive Maintenance Agreements

- These are similar to winter municipal or snow agreements between the Municipality and the County – these are paid in dollars to the municipality
- Mowing, tree trimming, sweeping, etc.



# ASSET MANAGEMENT

- **Bridges**
  - Over 20' get inspected but are you looking at your smaller bridges on a yearly cycle? Do you know how many bridges you own?
  - A bridge "structure" is much like your house; preventative maintenance is key. Small issues addressed in a timely manor will extend the structures life exponentially.
- **Drainage**
  - Do you have a list of your drainage? Is anyone looking at your drainage system? Have they been rated?
  - Is there a priority list of drainage issues? Is there a plan for your drainage?
- **Paved Roadways**
  - Someone has spent a lot of your taxpayer's money or maybe grant money on your bigger roadways. Are they being inspected on a schedule?
  - Has the municipality been staying up on the preventive maintenance? Look into pavement preservation. Try not to let roads get to a condition that will cost your municipality a lot of money.
  - Do you have a plan in place to address them before it's too late?
- **Equipment** - has your municipality been maintaining or replacing equipment on any kind of life cycle? Are you applying for LSA grants to upgrade or replace old equipment?
- **Buildings** - has your municipality been maintaining your buildings? Does anyone do an inspection? Preventative maintenance is key; small issues addressed in a timely manor will extend the structures life exponentially.
- **Employees** - They are a huge asset. Are you managing that asset well?

# BEST PRACTICES

## Good management practices

- When a contractor is on site, whether it's a LF project or a grant situation, be out with them. Be available by phone to answer questions.
- Buying materials: use LF funds when you're sure it's eligible
- PennDOT Pub 213 traffic control – our guide to safe traffic control.
- Questions if we can't get you an answer or you're still confused.
  - Call PSATS - they are very helpful
- Grants – encourage the practice of applying for grants in phases.
  - Drainage and patching in Phase 1
  - Paving a portion in Phase 2
  - Phase 3 finishing the paving or sidewalk
- Hiring a Municipal Engineer by Pub 93 saves you time if you get a large grant.
- LTAP courses are a great resource.



# GRANT OPPORTUNITIES

## **Penn DOT - Multimodal Transportation Fund**

Applications accepted annually **Sept 1 to Nov 5**. All applications and all required supplemental information must be electronically submitted by close of business on July 31 for hopeful consideration at the November CFA board meeting.

**Can apply for \$100K – 3M. No fee. Municipality must have 30% match. These grants are managed through the eGrant system. This is a reimbursable grant where the municipality spends the money then gets reimbursed when they provide an invoice and proof of payment to the contractor.**

## **Department of Community and Economic Development (DCED)**

Applications accepted annually **March 1 and July 31**. The goal is to ensure Pennsylvania is a premier state to do business: where we adopt and innovate the next generation of breakthroughs in a diverse mix of industry clusters; where we cultivate a resilient economy; and where we invest in our people and our communities to build a stronger Pennsylvania.

**Can apply for \$100K to 3M. Fee of \$100. Has to be LF eligible. Municipality can submit invoices for payment from the grants prior to paying the contractor.**

## **Local Shared Account LSA - falls under the DCED**

The PA Race Horse Development and Gaming Act (Act 2004-71), as amended, provides for the distribution of gaming revenues through the Commonwealth Financing Authority (CFA) to support projects in the public interest within the Commonwealth of Pennsylvania. Applications accepted annually between **Sept 1 to Nov 5**.

**Can apply for \$25K to 1M. Fee of \$100. Funding from Horse racing Dev Act. Municipality can submit invoices for payment from the grants prior to paying the contractor.**

Keystone log in at <https://grants.pa.gov/Login.aspx>



# ATV POLICY

Your municipality can request to use PennDOT roads to connect more of your ATV routes together to create loops and connect ATV users to local businesses and attractions



**DATE:** May 12, 2025

**SUBJECT:** Snowmobile and All-Terrain Vehicle Roads Policy

**TO:** District Executives

**FROM:** Daniel P. Farley, P.E., Director  
Bureau of Operations

This time and resource impacting Strike-off Letter (SOL) revises PennDOT's policy on the designation of Snowmobile and All-Terrain Vehicle (ATV) Roads as described in Chapter 11.13 of Publication 46, Traffic Engineering Manual.

75 Pa. Code §7722 establishes that PennDOT or local authorities may designate roadways under their jurisdiction as a snowmobile road, an ATV road, or both, and may, in its discretion, determine whether such road shall be closed to vehicular traffic or whether snowmobiles or ATVs may share this designated road with vehicular traffic. The law also states that no liability is imposed on PennDOT or local authorities as a result of this designation.

Based on the experience gained from the Pennsylvania Department of Conservation and Natural Resources' (DCNR) regional ATV trail network pilot in northcentral Pennsylvania, PennDOT has revised current policy to allow designation of ATV roads under certain conditions. The attached revised policy is effective immediately and will be incorporated into the next update to PennDOT's Publication 46. Note that minor corrections were also made to the sections which cover snowmobiles that do not materially affect this portion of the policy.

Also attached is the draft version of TE-120 ALL-TERRAIN VEHICLE (ATV) ROAD DESIGNATION ENGINEERING AND TRAFFIC STUDY form. This form may be used immediately to document district analysis and recommendations until a final version is published. The final version will be published to the department website when complete. Additionally, template response letters will be developed for consistent responses to public concerns based on District feedback.

As a follow-up from the statewide ATV policy webinar on Wednesday, May 7, 2025, we request volunteers to form a statewide ATV Work Group to track progress and lessons from ATV road designations and improve this policy over time. Please provide the names and contact information of any volunteers to Robert J. Pentto, P.E., Chief, Traffic Engineering and Permits at (717) 783-6265 or [rpentto@pa.gov](mailto:rpentto@pa.gov). The Bureau of Operations will continue to be a resource for ATV issues and any questions or concerns may be directed to Mr. Pentto.

Bureau of Operations  
400 North Street, 6<sup>th</sup> Floor | Harrisburg, PA 17120 | 717-787-6899 | [www.penndot.gov](http://www.penndot.gov)

TE-120 (XX-25) **DRAFT**  
**ALL-TERRAIN VEHICLE (ATV) ROAD DESIGNATION  
ENGINEERING AND TRAFFIC STUDY**  
PLEASE TYPE OR PRINT ALL INFORMATION IN BLUE OR BLACK INK



A – LOCATION INFORMATION	
REQUESTING MUNICIPALITY OR ORGANIZATION:	CONTACT NAME, EMAIL AND TELEPHONE:
COUNTY:	
STATE ROAD(S) (List all state roads requested for ATV road designation including limits of designation)	
B – REFERENCE INFORMATION	
REFERENCE: 75 PA C.S.	SECTION(S): §7721, 7722 AND 7723
REFERENCE: PUB 46 Traffic Engineering Manual	SECTION(S): Chapter 11.13 Snowmobiles and All-Terrain Vehicles
C – REQUIREMENTS	
1. Is the request made by the local authority in which the state highway segment is located (or majority thereof); or a regional organization, recognized by both PennDOT and the Pennsylvania Department of Conservation and Natural Resources (DCNR), formed to manage ATV trail networks. ..... <input type="checkbox"/> YES <input type="checkbox"/> NO Remarks:	
2. Has documentation been provided that an ordinance was enacted by any and all local authorities affected by the proposed designation? ..... <input type="checkbox"/> YES <input type="checkbox"/> NO Remarks:	
3. Does the request for ATV road designation include interstates or multilane highways? ..... <input type="checkbox"/> YES <input type="checkbox"/> NO	
4. Will the proposed ATV road act as a connector from or between (1) ATV trails or other state, local or DCNR state forest roads open to ATVs, or (2) Business destinations for ATV traffic such as campgrounds, gas stations, convenience store or restaurants? ..... <input type="checkbox"/> YES <input type="checkbox"/> NO Remarks:	
5. Does an alternative connector exist such as a local or PA DCNR state forest road? ..... <input type="checkbox"/> YES <input type="checkbox"/> NO Remarks:	

**Confidential – Traffic Engineering and Safety Study**  
(For Department Use Only)

This document is the property of the Commonwealth of Pennsylvania, Department of Transportation. The data and information contained herein are part of a traffic engineering and safety study. This safety study is only provided to those official agencies or persons who have responsibility in the highway transportation system and may only be used by such agencies or persons for traffic safety related planning or research. The document and information are confidential pursuant to 75 Pa. C.S. 3754 and 23 U.S.C. 409 and may not be published, reproduced, released, or discussed without the written permission of the Pennsylvania Department of Transportation.

**Free** training and technical assistance on local transportation issues:

- Pavement Preservation
- Traffic Calming/Speed Management
- Pavement Markings, **Signs**, and Signals
- Stormwater/Drainage
- Asset Management
- Winter Maintenance
- Pedestrians/Bicycles/Trails/ADA
- School Transportation
- Drones/GIS
- Trucks on Local Roads



Pennsylvania  
Department of Transportation  
Local Technical Assistance Program



# DISTRICT 10

## Municipal services contacts

- **Cory Shaffer – Butler, and Western Armstrong Co**  
**[corshaffer@pa.gov](mailto:corshaffer@pa.gov) 724-422-1116**
- **James Breggenti - Eastern Armstrong and Indiana County**  
**[jbreggenti@pa.gov](mailto:jbreggenti@pa.gov) 724-422-1117**
- **Marc Skarbek - Jefferson and Clarion County**  
**[mskarbek@pa.gov](mailto:mskarbek@pa.gov) 724-422-1115**

**Municipal Services Supervisor - Steven Vasbinder**  
**[svasbinder@pa.gov](mailto:svasbinder@pa.gov) [724-970-4413](tel:724-970-4413)**



# RESOURCES

TINA GIBBS

– COMMUNITY RESOURCES  
COORDINATOR



# DISTRICT 10 WEB RESOURCES

- New website for Commonwealth agencies
  - [District 10 | Department of Transportation | Commonwealth of Pennsylvania](https://www.pa.gov/agencies/pennDOT/regional-offices/district-10.html) (<https://www.pa.gov/agencies/pennDOT/regional-offices/district-10.html>)
- Outreach documents will be posted under the District 10 Outreach link
  - Doing Business with PennDOT Resource Guide
  - Spring Outreach Meeting presentations & maps

ARMSTRONG • BUTLER • CLARION • INDIANA • JEFFERSON

## Engineering District 10

PennDOT's Engineering District 10 is responsible for the state-maintained transportation network across Armstrong, Butler, Clarion, Indiana, and Jefferson Counties. This includes 3,180 total road miles and 1,630 total bridges.

We also work with local governments, elected officials, stakeholders and the public on keeping people and goods moving safely and efficiently in this region.



[View District 10 Contacts](#)

[View District 10 Projects](#)

A screenshot of the PennDOT District 10 website. On the left is a navigation menu for the Pennsylvania Department of Transportation, with 'District 10' highlighted and an orange arrow pointing to 'District 10 Outreach'. The main content area features a search bar, a 'Sort &amp; Filter' button, and a list of news items. The first news item is 'PennDOT Reduces Speed Limit to 55 mph on I-80 in Clarion and Jefferson Counties' dated January 28, 2025, with tags for Clarion County, Jefferson County, District 10, and Department of Transportation. The second news item is 'PennDOT Extends the Length of the Speed Limit Restrictions on I-80 in Clarion and Jefferson Counties' dated January 14, 2025, with similar tags. The third news item is 'PennDOT Reduces Speed Limit to 45 mph on I-80 in Clarion and Jefferson Counties' dated January 16, 2025, with similar tags. On the right side, there is a contact information box for PennDOT District 10, including the address (2550 Oakland Avenue, Indiana, PA 15701), phone (724-357-2800), fax (724-357-2084), and press office (724-357-2829). Below this is a 'Subscribe to District 10 News' section with an email input field and a 'Public Resources' section with a link to 'Clarion River Bridge Rehabilitation Prince Weather Dependent Lane'.



# CONNECT WITH DISTRICT 10

## Website:

[District 10 | Department of Transportation | Commonwealth of Pennsylvania](https://www.pa.gov/agencies/penndot/regional-offices/district-10.html)  
(<https://www.pa.gov/agencies/penndot/regional-offices/district-10.html>)

## Subscribe to District 10 news:

To receive emails when a press release is posted to the website, enter your email address into the "Subscribe to District 10 News" box on our District 10 home page.

## Join our Groups on Facebook:

[Pittsburgh PennDOT](#)  
[Northwest PennDOT](#)

## X (Twitter):

[@511PA Erie](#)  
[@511PA Pittsburgh](#)

## District 10 contacts

District Executive, Brian Allen - 724-357-2806

Assistant District Executive - Construction, Paul Koza, Jr. - 724-357-2812

Assistant District Executive - Design, Alice Hammond - 724-357-2805

Assistant District Executive - Maintenance, Matthew Burkett - 724-357-2809

Community Relations Coordinator, Tina Gibbs - 724-357-2829

## District Office (10-0)

2550 Oakland Avenue  
Indiana, PA 15701  
724-357-2800

*Standard hours of operation  
are 8:00 AM to 4:30 PM*

