

BUTLER COUNTY

**2026 DISTRICT 10
SPRING OUTREACH
MEETING**



Pennsylvania
Department of Transportation

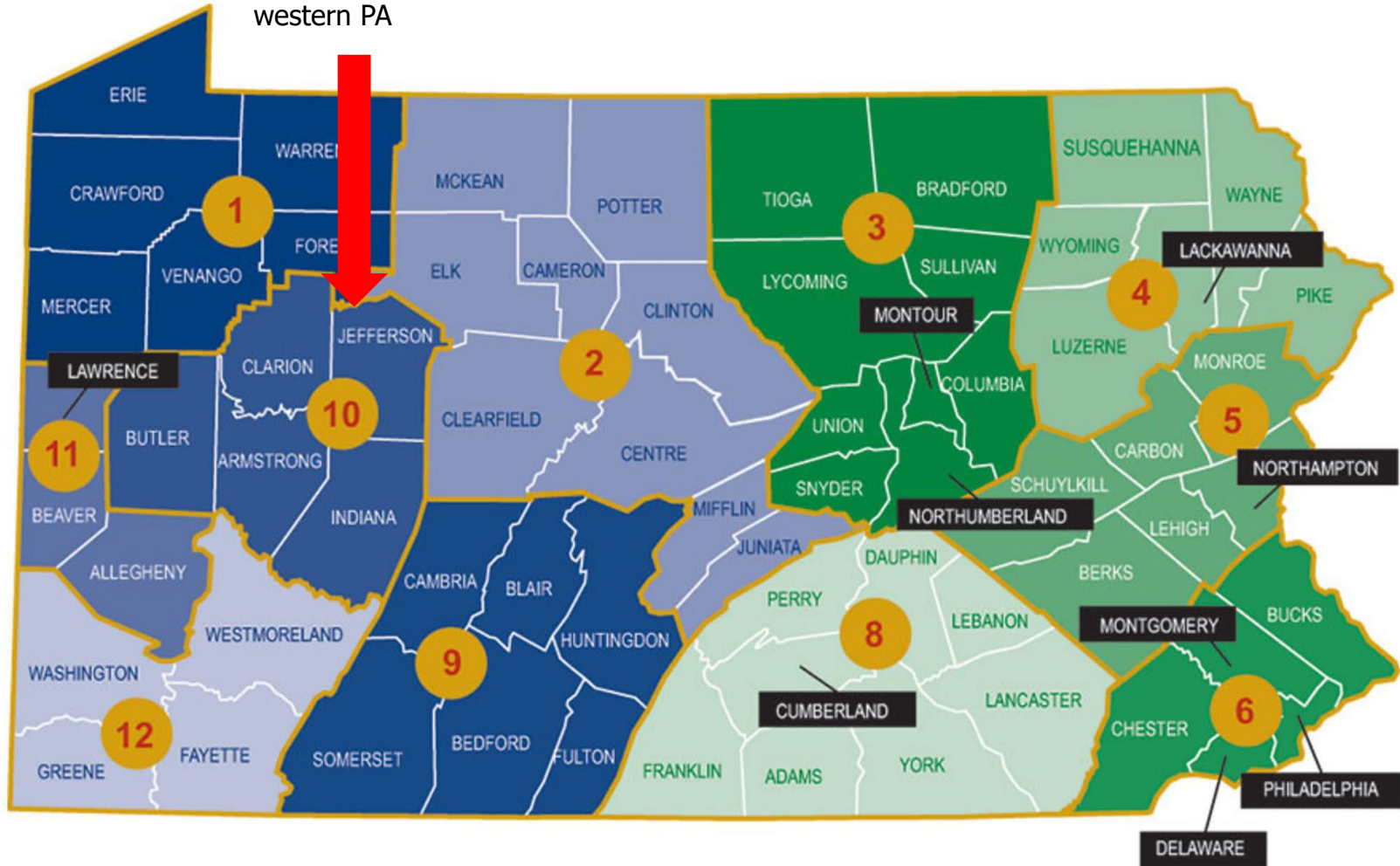
INTRODUCTIONS

- **MATT BURKETT, ASSISTANT DISTRICT EXECUTIVE - MAINTENANCE**
 - **WELCOME AND INTRODUCTIONS**
 - **DISTRICT 10 OVERVIEW**
- **PAUL KOZA, ASSISTANT DISTRICT EXECUTIVE - CONSTRUCTION**
 - **PROJECTS IN CONSTRUCTION**
- **ALICE HAMMOND, ASSISTANT DISTRICT EXECUTIVE - DESIGN**
 - **PROJECTS IN DESIGN**
- **MIKE MATTIS, BUTLER COUNTY MAINTENANCE MANAGER**
 - **COUNTY MAINTENANCE OVERVIEW**
- **STEVE VASBINDER, MUNICIPAL SERVICES SUPERVISOR**
- **TINA GIBBS, DISTRICT COMMUNITY RELATIONS COORDINATOR**
 - **WEBSITE RESOURCES & SOCIAL MEDIA**



WHERE IS DISTRICT 10?

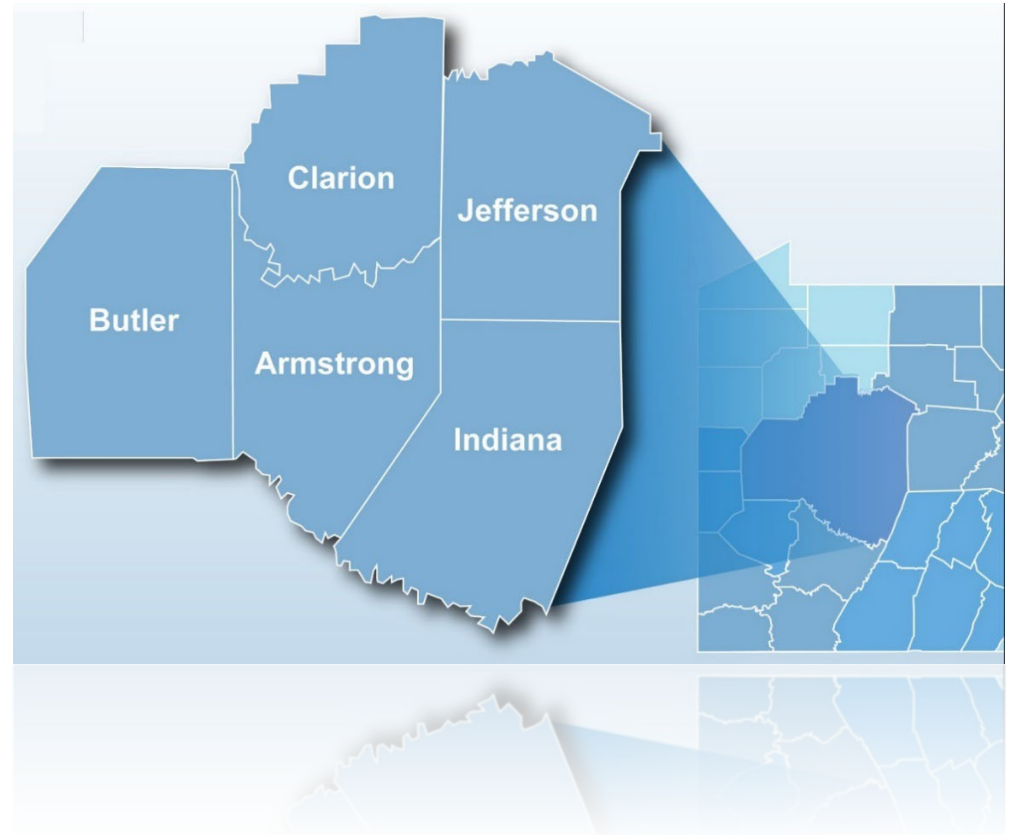
District 10 consists of Armstrong, Butler, Clarion, Indiana & Jefferson Counties in western PA



DISTRICT 10 OVERVIEW

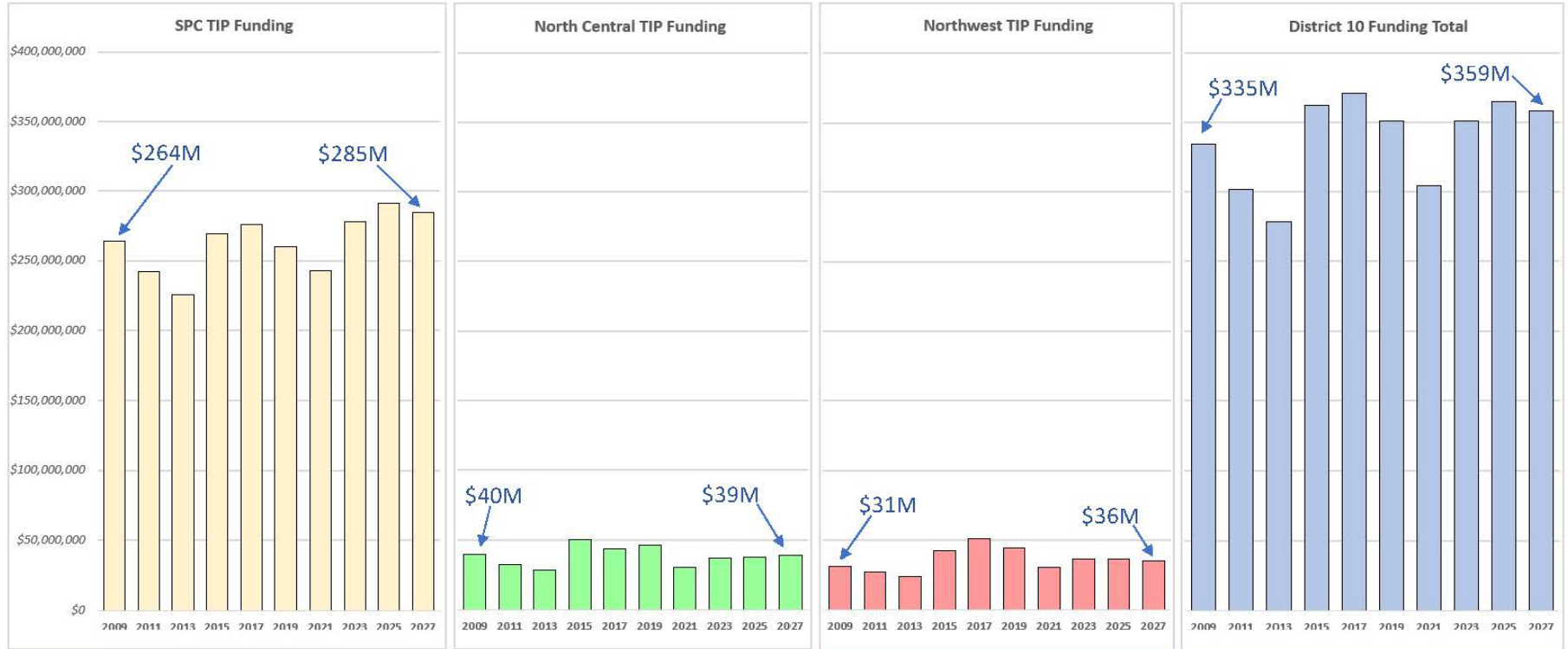
- 5 counties
- 800 employees
- 1,624 bridges
- 7,117 lane miles
- 7,006 snow lane miles

- The 2026 construction and maintenance season in District 10 includes:
 - 64 construction projects
 - 413 miles of seal coating
 - nearly 1,190 miles of shoulder cutting



TIP FUNDING ALLOCATION

District 10's TIP Funding Allocation Over Time



TIP Funding Cycle	SPC TIP Funds	North Central TIP Funds	Northwest TIP Funds	District Total TIP Funds
2009	\$264,116,000	\$9,510,000	\$31,086,000	\$334,714,000
2011	\$242,108,000	\$9,457,000	\$26,978,000	\$278,543,000
2013	\$225,718,000	\$2,478,000	\$24,131,000	\$276,025,000
2015	\$269,461,000	\$5,496,000	\$42,624,000	\$327,581,000
2017	\$276,000,000	\$48,468,000	\$51,484,000	\$375,952,000
2019	\$250,054,000	\$46,466,000	\$44,767,000	\$351,277,000
2021	\$243,157,000	\$9,573,000	\$9,615,000	\$304,965,000
2023	\$277,806,000	\$36,910,000	\$36,601,000	\$351,117,000
2025	\$280,282,000	\$37,334,000	\$36,468,000	\$365,074,000
2027	\$284,051,000	\$9,677,000	\$35,969,000	\$359,297,000

*Data is based on the following: 2027 allocations reflect District allocations as of 1-20-2026. 2011-2027 data is per original Financial Guidance from Mark Tobin. 2009 is existing District data. This document can be found at the following location: J:\Design\Planning and Programming\DM DeFazio\TIP Funding Over Time Graph 2027_Final.pptx

By: Dominic M. DeFazio
1-20-2026



CONSTRUCTION

PAUL KOZA – ADE
CONSTRUCTION



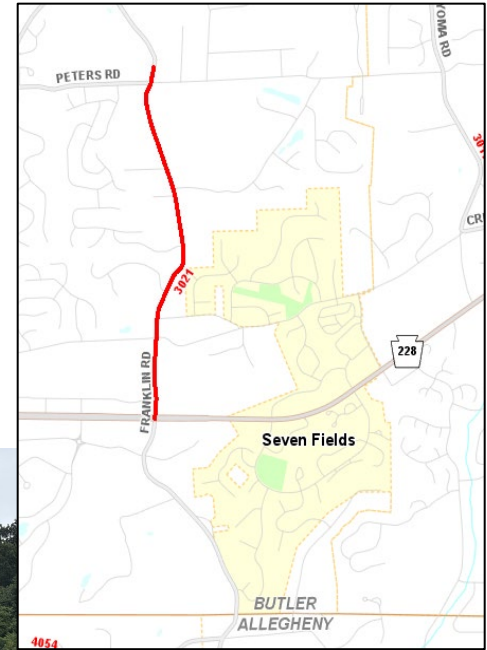
THREE DEGREE ROAD INTERSECTION

- Route 228
- Adams Township
- Cost: \$55,898,469
- Anticipated Completion:
11/23/2026
- Prime Contractor:
Independence
Excavating



10-2 ROUTE 3021 CORRIDOR IMPROVEMENT

- Route 3021 (Franklin Road) – Route 228 North to Peters Road
- Cranberry Township
- Cost: \$19,188,188
- Anticipated Completion: 11/8/2027
- Prime Contractor: Glenn O. Hawbaker, Inc.
- Detours and Night Work



KARNS CROSSING BRIDGE

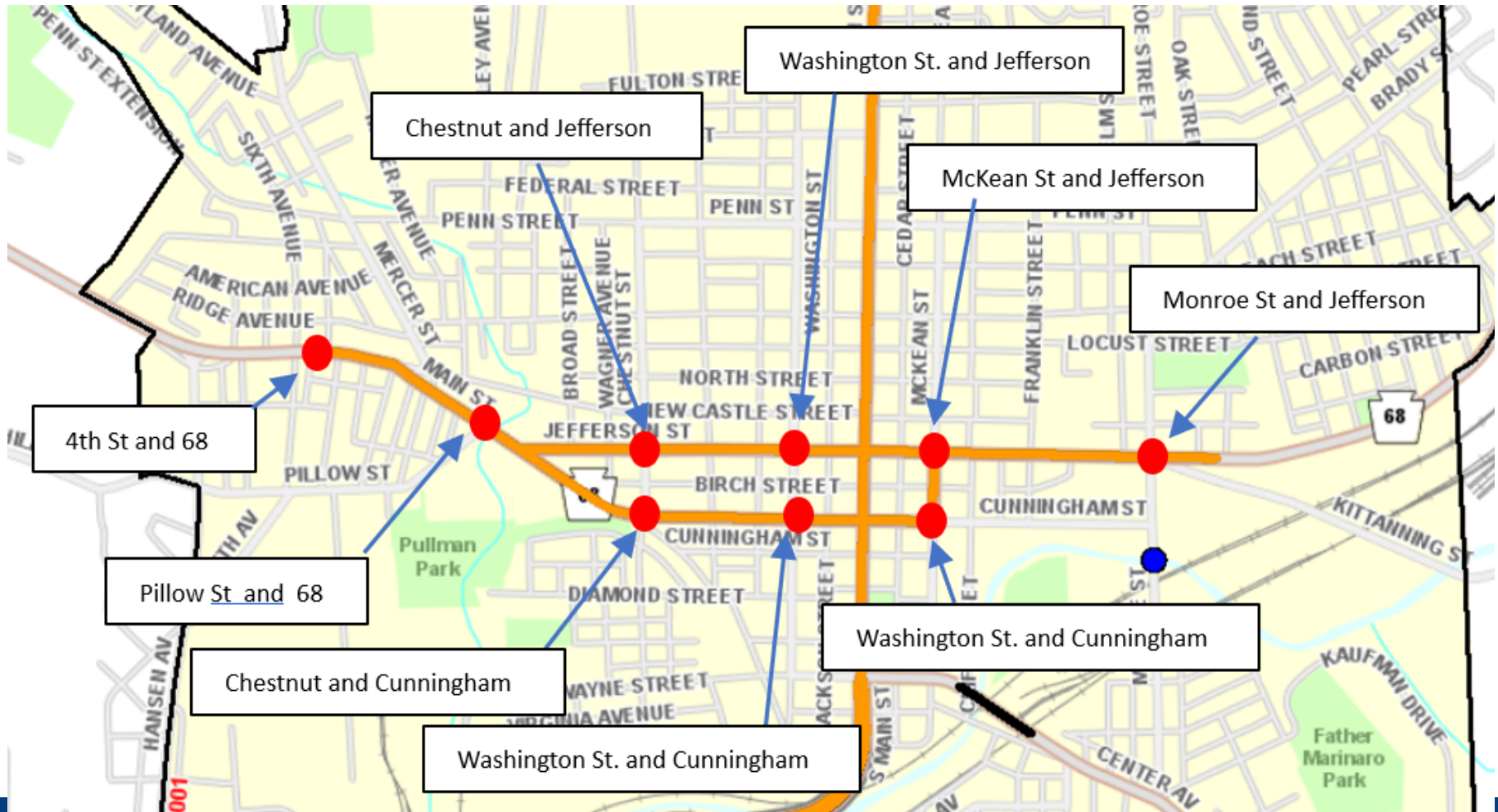
- Route 68
- Butler & Summit Townships
- Cost: \$64,846,663
- Anticipated Completion: 5/2/2028
- Prime Contractor: Swank Construction Company
- Two Bridge Replacements & Intersection Improvements



JEFFERSON/CUNNINGHAM STREET SIGNAL IMPROVEMENTS

- Routes 68 & 356
- Butler City
- Cost: \$3,871,424

- Anticipated Completion: 12/10/2026
- Prime Contractor: M&B Services
- Signal Upgrades



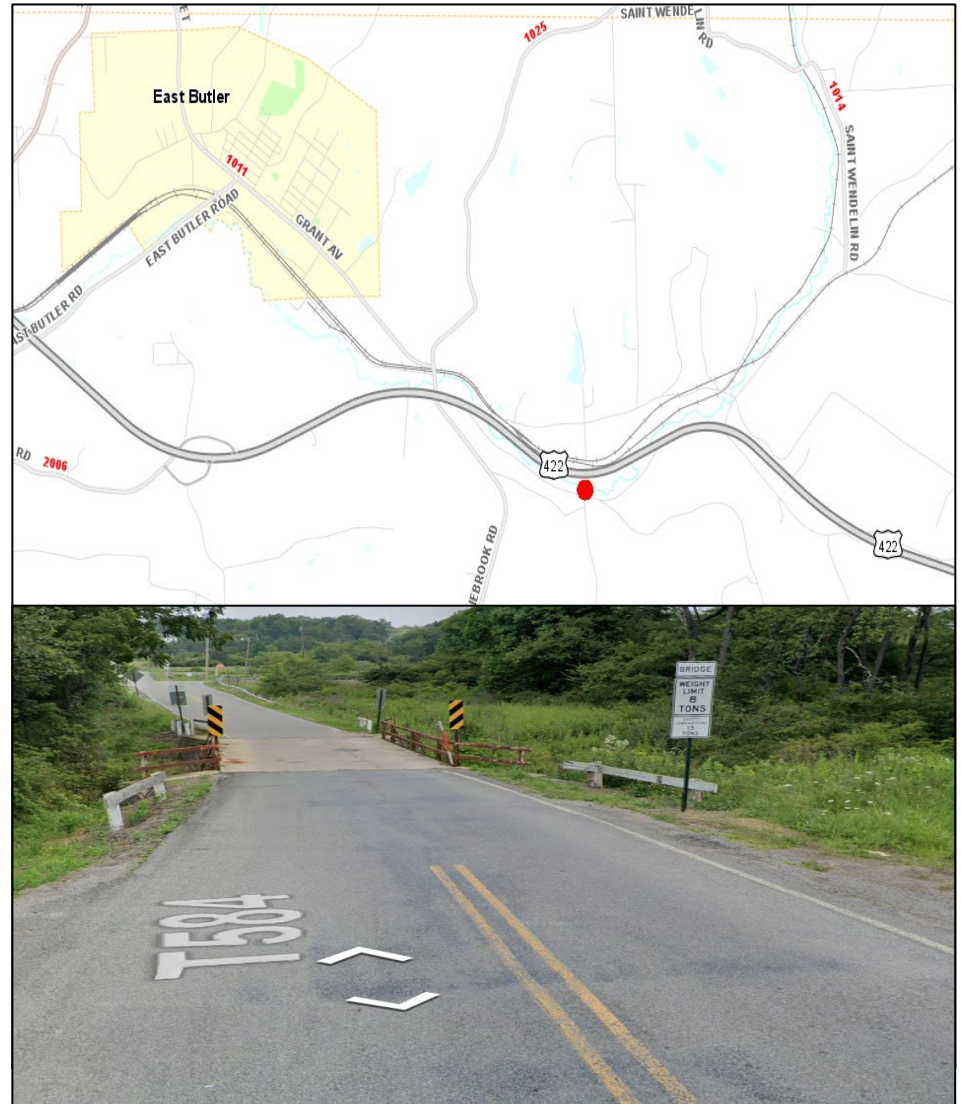
ZELIENOPE BRIDGE #1

- Route 19
- Zelienople Borough
- Cost: \$1,937,500
- Anticipated Completion: 9/17/2026
- Prime Contractor : Allison Park Contractors, Inc.
- Structure Preservation
- Southbound Detour 44 days and 46 days
- July 4 week open



T-584 GEIBEL ROAD BRIDGE

- T-584 (Geibel Road)
- Summit Township
- Cost: \$795,000
- Anticipated Completion: 8/21/2026
- Prime Contractor: Allison Park Contractors, Inc.
- Bridge Replacement
 - Detour April 13 – August 11



SHEARER BRIDGE PRESERVATION

- Route 422
- Butler & Summit Townships
- Cost: \$6,235,403
- Anticipated Completion: 12/17/2026
- Prime Contractor: MEKIS Construction Corporation
- Bridge Rehabilitation



ROUTE 8 BUTLER CITY TO ROUTE 308

- Route 8
- Butler City, Butler & Center Townships
- Cost: \$13,602,886
- Anticipated Completion: 11/6/2026
- Prime Contractor: Lindy Paving, Inc.
- Resurfacing 7 Miles from Ravenhurst Lane to Route 308
- Weekend Ramp Detours at Route 422 & Night Work



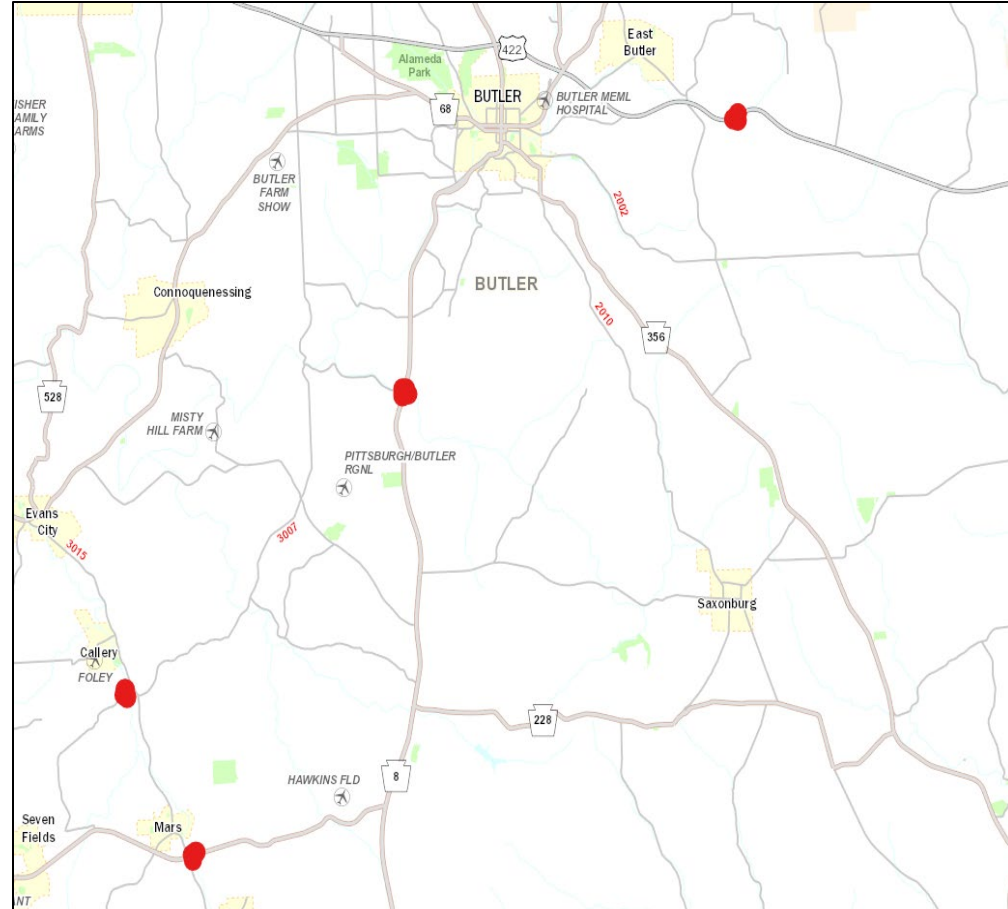
ROUTE 422 LAWERENCE COUNTY LINE EAST

- Route 422
- Slippery Rock & Muddy Creek Townships
- Cost: \$5,696,134
- Anticipated Completion: 10/30/2026
- Prime Contractor: Lindy Paving, Inc.
- Resurfacing 2 miles
- 5 – 7 Day Ramp Detours at I-79



BUTLER EPOXY GROUP BRIDGES

- Routes 8, 422, 228, & 3017
- Adams, Penn & Summit Townships
- Cost: \$427,237
- Anticipated Completion: 8/21/2026
- Prime Contractor: RAM Construction Services
- Bridge Repairs & Epoxy Overlay
- Night Work on Route 228
- 40-Day Lane Closure on Route 8



BUTLER GROUP NO. 102-26-SIA

- Routes 68 & 228
- Various Townships and Boroughs
- Cost \$3,239,152
- Anticipated Completion: August 2026
- Prime Contractor: Commercial Asphalt Supply /Shields Asphalt Paving
- Resurfacing – See map for locations



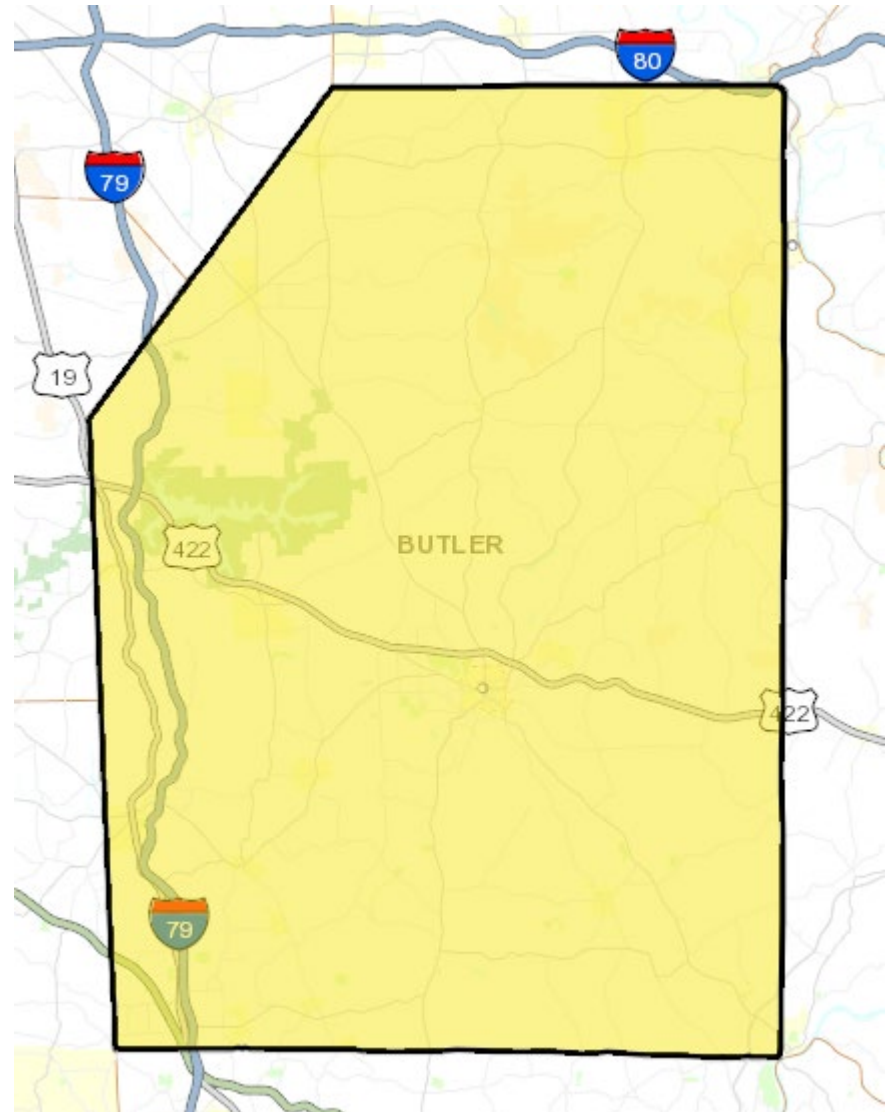
EKASTOWN WEST 3R

- Route 228
- Clinton & Buffalo Townships
- Cost
\$17,346,325.95
- Anticipated Completion: Fall 2028
- Prime Contractor: Plum Contracting, Inc.
- Reconstruction
- Digital Delivery
- Weekend Detours



BUTLER COUNTY MILL & FILL

- Various Routes
- Various Townships
- Cost Estimate: < \$1M
- Let Date: 5/21/2026
- Patching/Resurfacing



WAYNE STREET VIADUCT EPOXY

- Route 356
- City of Butler
- Cost Estimate:
< \$1M
- Let Date:
8/13/2026
- Bridge
Preservation



2026 DISTRICT 10 HFST

- District Wide
- Cost: \$1,949,197
- Anticipated Completion: 10/30/2026
- Prime Contractor: MEKIS Construction Corporation
- Safety Improvement



2026 COUNTY GUIDERAIL

- County Wide Projects
Various Routes
- Cost: \$1,791,918
- Anticipated
Completion: 12/31/2027
- Prime Contractor: Green
Acres Contracting
- Repair & Replacement
of Guiderail



2026 DISTRICT 10 SMALL PAINT

- District Wide
- Cost Estimate: < \$1M
- Let Date: 5/7/2026
- Paint Legend Replacement



DESIGN

ALICE HAMMOND – ADE
DESIGN



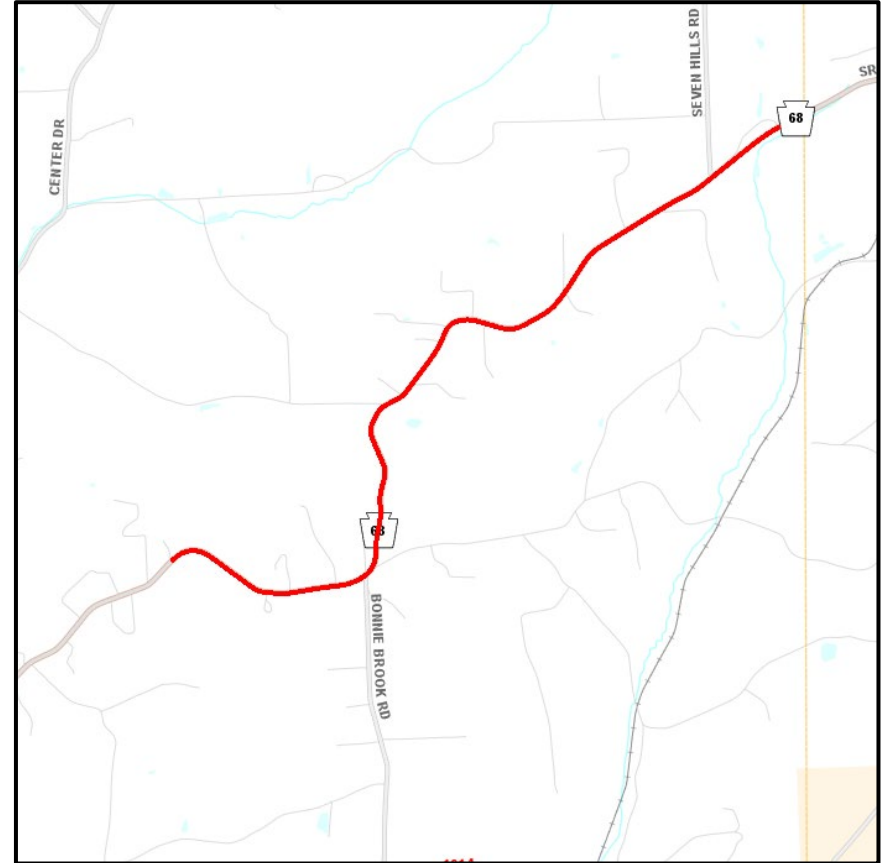
Pennsylvania
Department of Transportation

Roadway Projects



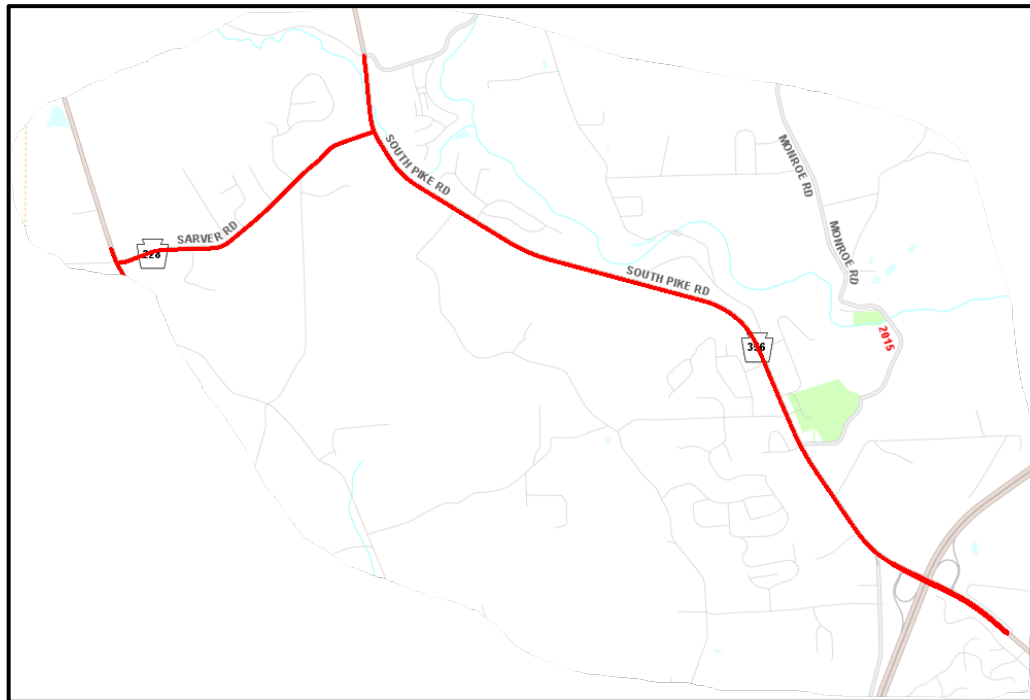
ROUTE 68 WOODBINE RESURFACING

- Route 68 from near Bonniebrook Road to near Intersection with Route 1017 Seven Hills Road
- Surface Improvement Program (SIP)
- Oakland Township
- Construction in 2027
- Construction Estimate: \$1.0M - \$2.5M



ROUTE 228 & ROUTE 356

- Route 228 from Route 2009 to Route 356
- Route 356 from Route 2018 Sarver to Route 28 Interchange
- Surface Improvement Program (SIP)
- Buffalo Township
- Construction in 2027
- Construction Estimate: \$1.0M - \$2.5M



FREEDOM ROAD TO SEVEN FIELDS PM



- Routes 228 & 3020 from Executive Drive to near Route 3021 Franklin Road
- Preventative Maintenance
- Adams & Cranberry Townships & Seven Fields Borough
- Construction in 2028
- Construction Estimate: \$7.5M - \$10.0M



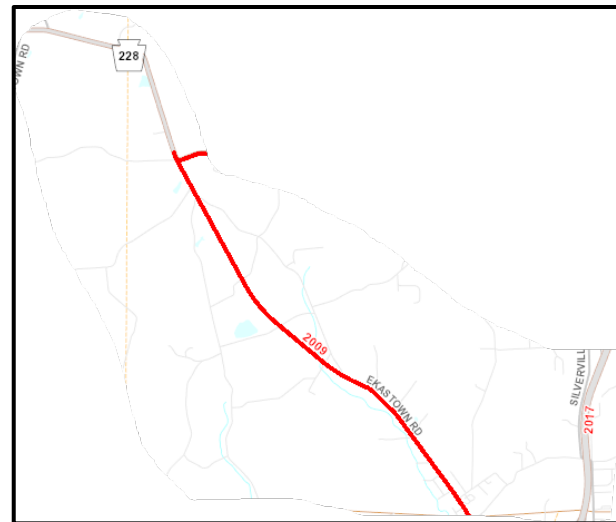
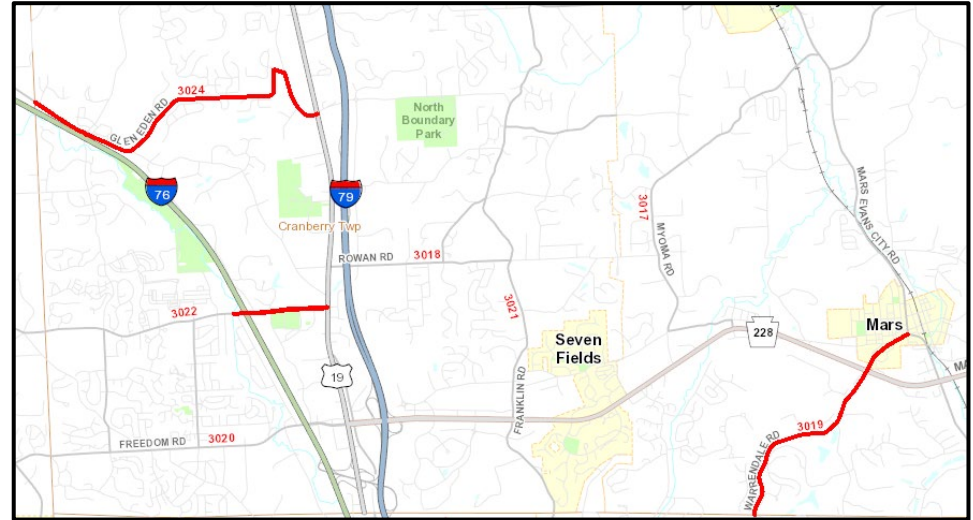
ROUTE 422 COUNTY LINE WEST PM

- Route 422 from near Game Reserve Road East to Butler/Armstrong County Line
- Pavement Preservation
- Clearfield Township
- Construction in 2028
- Construction Estimate: \$7.5M - \$10.0M



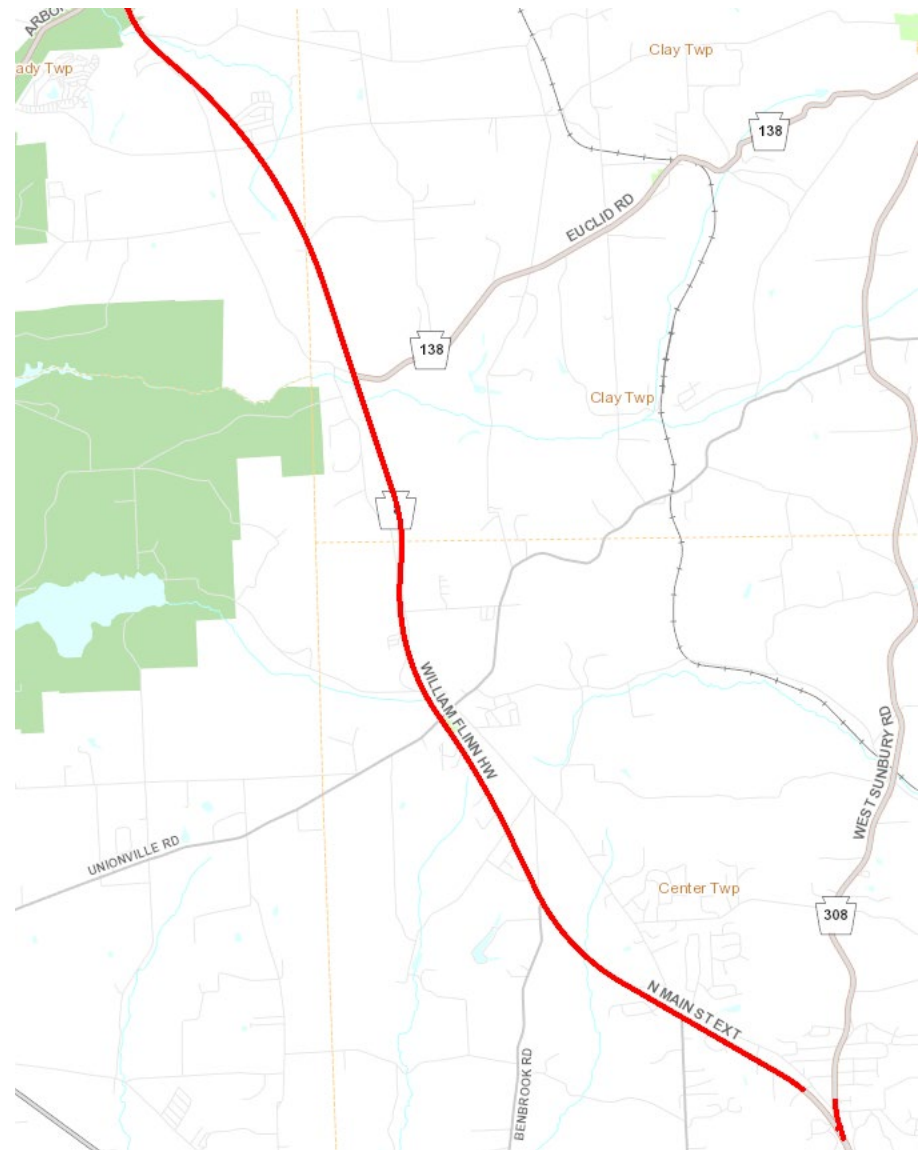
BUTLER GROUP 102-28-SIA

- Route 2009 Ekastown Road from Allegheny County Line North to Intersection of Route 228
- Route 3024 Glen Eden Road from County Line to Route 19
- Route 3022 Rochester Road from Turnpike to Route 19
- Route 3019 Warrendale Road from Allegheny County Line North to Intersection of Route 3015
- Surface Improvement Program (SIP)
- Adams, Buffalo & Cranberry Townships & Mars Borough
- Construction in 2028
- Construction Estimate: \$2.5M - \$5.0M



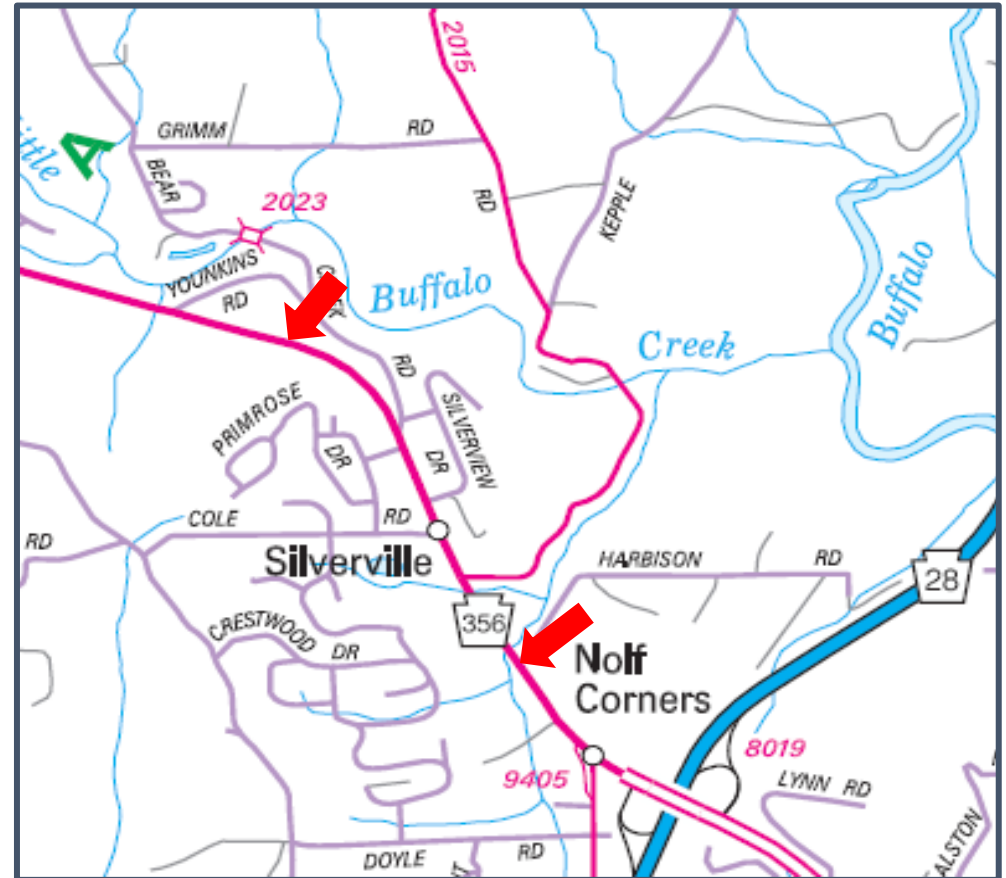
ROUTE 8 – ROUTE 308 TO ROUTE 173

- Route 8 from North of Route 308 to Intersection of Route 173
- Pavement Preservation
- Center, Clay & Brady Townships
- Construction in 2028
- Construction Estimate: \$5.0M - \$7.5M



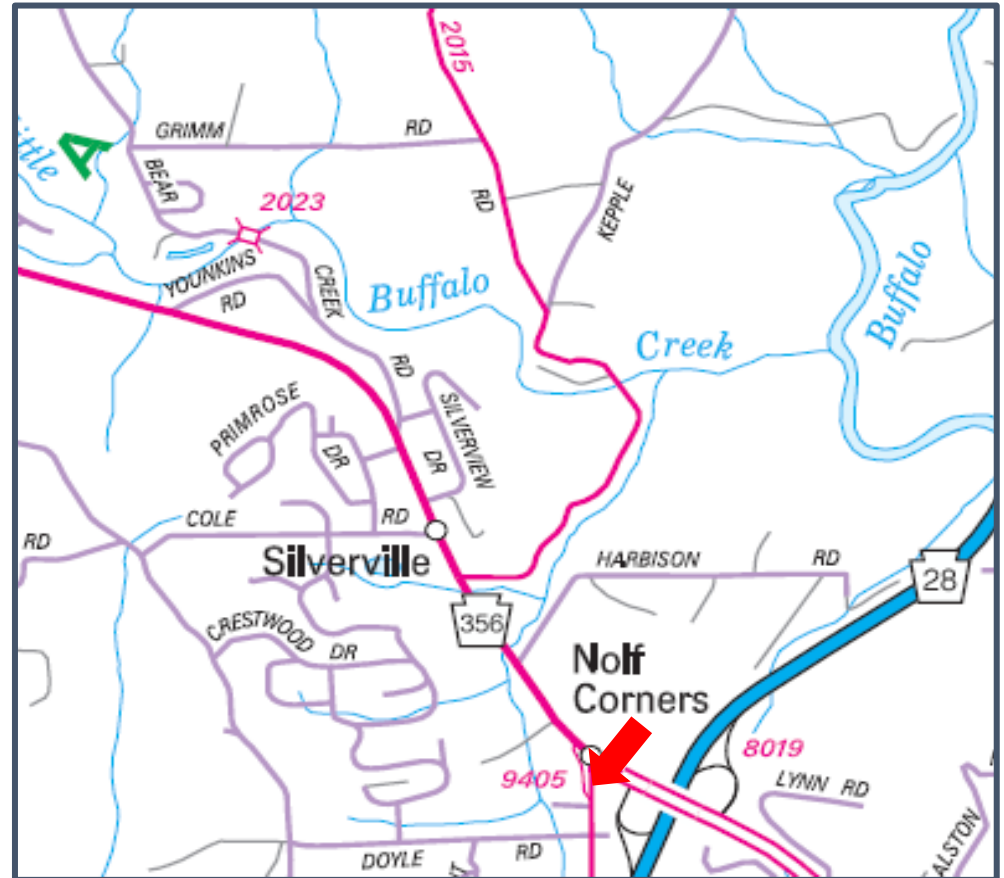
ROUTE 356 CORRIDOR IMPROVEMENTS

- Route 356 from East of Harbison Road to East of Younkens Road
- Congestion Reduction, Addition of Turning & Through Lanes, Signal Coordination & Drainage Improvements
- Buffalo Township
- Construction in 2030
- Construction Estimate: \$25M - \$30M



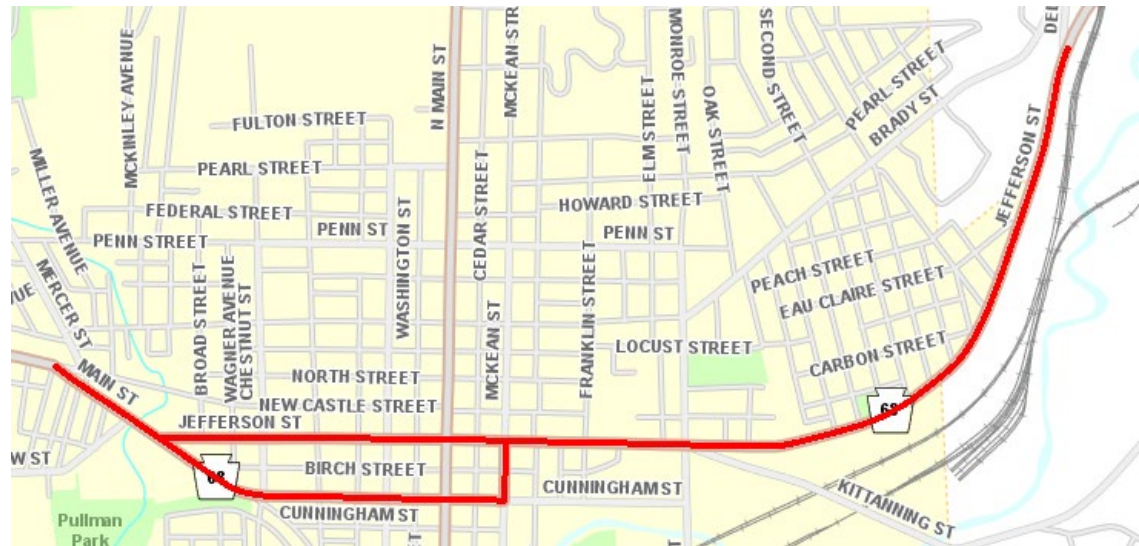
ROUTE 356 PARK-AND-RIDE

- Route 356 & Route 2017
- Relocate and Expand Existing Park-and-Ride. Doubling Capacity
- Buffalo Township
- Construction in 2030
- Construction Estimate: \$2.5M - \$5.0M



ROUTE 68 BUTLER CITY RESURFACING

- Route 68 from Fourth Avenue North to near Delwood Road
- Pavement Preservation
- City of Butler
- Construction in 2030
- Construction Estimate: \$1.0M - \$2.5M



ROUTE 422 PROSPECT PM

- Route 422 from Route 4017 North Shore Drive to East of Route 528 Interchange
- Pavement Preservation
- Muddy Creek & Franklin Townships & Prospect Borough
- Construction: TBD
- Construction Estimate: \$15.0M - \$20.0M



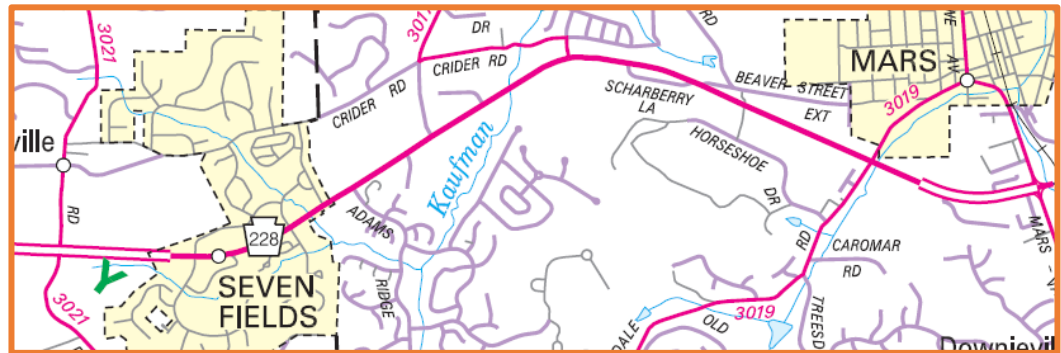
ROUTE 3022 ROCHESTER ROAD WIDENING

- Route 3022 from Haine School Road to Thompson Park Drive
- Highway Reconstruction/Widening
- Cranberry Township
- Construction: TBD
- Construction Estimate: \$15M - \$20M



MARS RAILROAD BRIDGE WEST EXPANSION

- Route 228 from Route 3021 Franklin Road East to Route 3019 Pittsburgh Street
- Safety Improvements, Lane Additions, Realignment & Intersection Improvements
- Adams & Cranberry Townships & Seven Fields Borough
- Construction: TBD
- Construction Estimate: \$90M - \$100M



I-79 ROUTE 528 INTERCHANGE

- Interstate 79
- Interchange Reconstruction
- Jackson Township
- Construction: TBD
- Construction Estimate: \$35M - \$40M



SR 528 over I-79



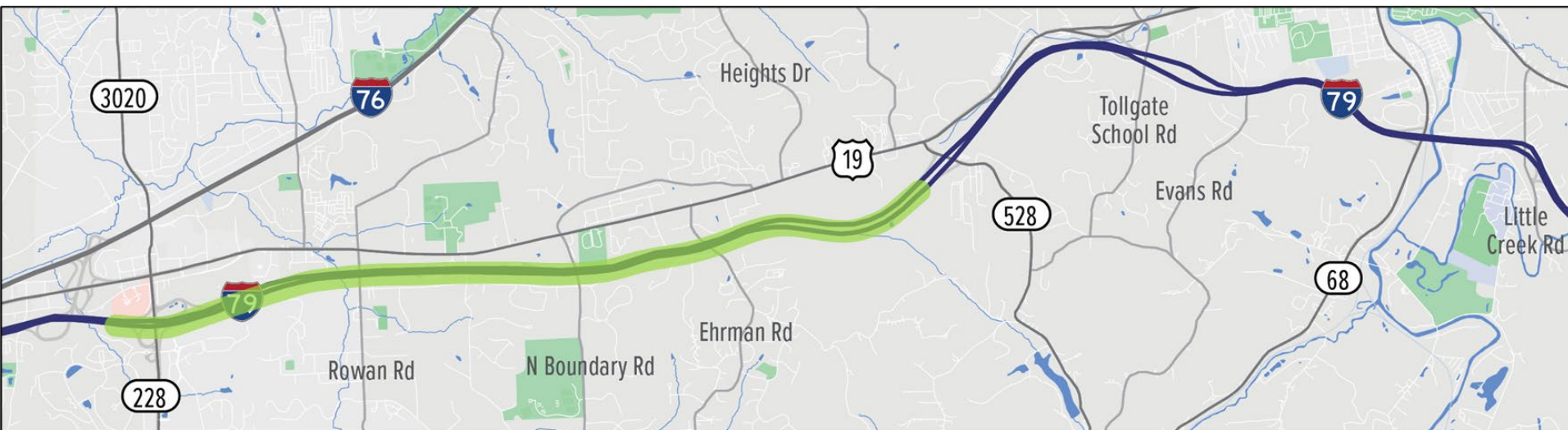
SR 528 Interchange

- Full Interchange
- Replace Bridges
- Upgrade 19/528 Intersection



I-79- ROUTE 528 SOUTH TO ALLEGHENY COUNTY LINE

- Interstate 79
- Interstate Reconstruction
- Cranberry and Jackson Townships
- Construction: TBD
- Construction Estimate: \$150M - \$175M



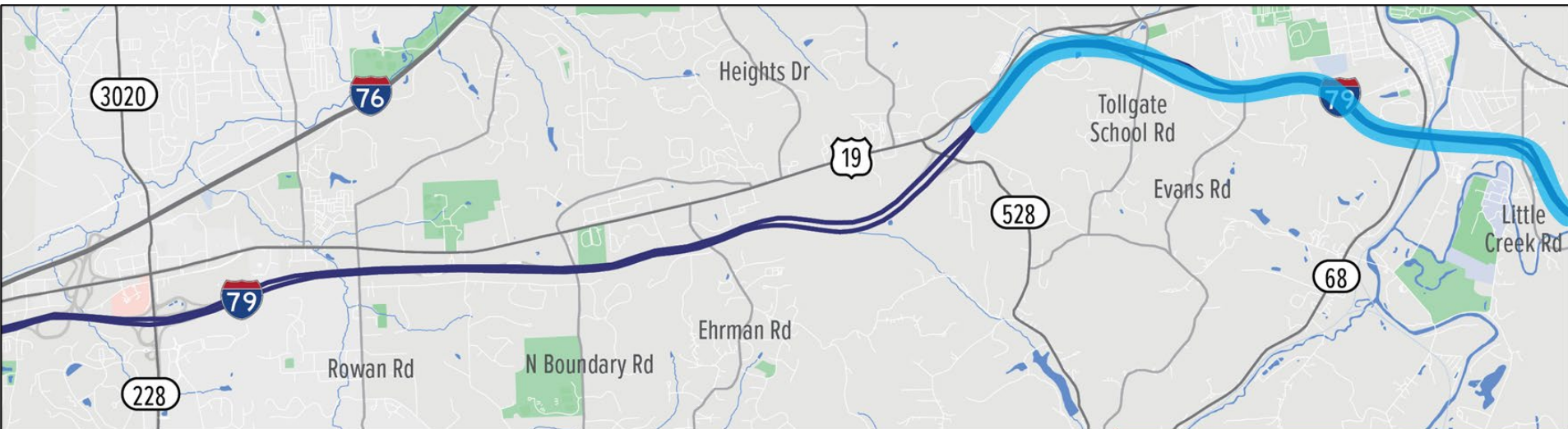
Three Lane Widening Section

- Add third lane from 228 to 528
- Replace Structures



I-79 - ROUTE 528 NORTH TO ROUTE 3025 INTERCHANGE

- Interstate 79
- Interstate Reconstruction
- Jackson Township
- Construction: TBD
- Construction Estimate: \$100M - \$125M



Two Lane Widening Section

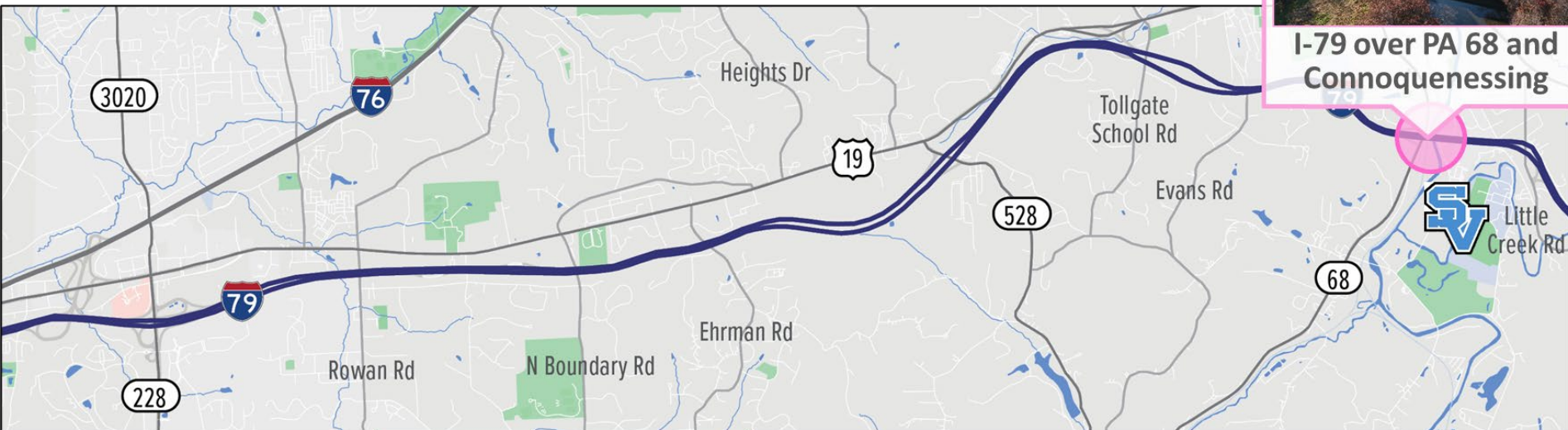
- Reconstruct from 528 to Little Creek Rd
- Replace Structures

I-79 HARMONY NB AND SB

- Interstate 79
- Bridge Replacement
- Jackson Township
- Construction: TBD
- Construction Estimate: \$70M - \$80M



I-79 over PA 68 and Connoquenessing



Harmony Bridges

- Replace Dual Bridges
- 16'-6" Min Vertical Clearance



Bridge Projects



ROUTE 422 SHAWOOD PIPE

- Route 422 and Off-Ramp Route 422 over Tributary to Muddy Creek
- Culvert Replacement
- Muddy Creek Township
- Construction 2027
- Construction Estimate: \$12.5M - \$15.0M



ROUTE 1004 BRUIN BRIDGE

- Route 1004 Station Street over South Branch of Bear Creek
- Bridge Replacement
- Bruin Borough
- Construction in 2027
- Construction Estimate: \$1.0M - \$2.5M



GENERAL BUTLER BRIDGE PM

- Route 8 over Connoquenessing Creek, Quarry Street & Railroads
- Bridge Preservation
- Butler City
- Construction in 2027
- Construction Estimate: \$7.5M - \$10M



ROUTE 528 OVER BIG RUN

- Route 528 Arbor Drive over Big Run
- Bridge replacement
- Brady Township
- Construction in 2028
- Construction Estimate: \$1.0M - \$2.5M



BUTLER LATEX GROUP

- Route 28 Northbound and Southbound over Route 2017
- Bridge Preservation
- Buffalo Township
- Construction in 2028
- Construction Estimate: \$2.5M - \$5.0M



BRANCHTON ROAD

- Route 4010 Branchton Road over McDonald Run
- Bridge Replacement
- Slippery Rock Township
- Construction in 2029
- Construction Estimate: \$1.0M - \$2.5M



RENFREW BRIDGE

- Route 3007 Meridian Road over Connoquenessing Creek
- Bridge Replacement
- Penn Township
- Construction in 2029
- Construction Estimate: \$5M - \$7.5M



SOUTH MONROE ST. BRIDGE

- Route 7301 South Monroe Street over Connoquenessing Creek
- Bridge Replacement
- City of Butler
- Construction in 2029
- Construction Estimate: \$5.0M - \$7.5M



T-603 SAINT JOE BRIDGE

- T-603 Saint Joe Road over Bonnie Brook
- Local Bridge Replacement
- Oakland Township
- Construction in 2029
- Construction Estimate:
\$500k - \$ 1.0M



ROUTE 268 OVER TRIB. TO SOUTH BRANCH BEAR CREEK

- Route 268 over Tributary to South Branch Bear Creek
- Bridge Replacement
- Petrolia Township
- Construction in 2029
- Construction Estimate:
\$1.0M - \$2.5M



ROUTE 422 OVER ROUTE 4005

- Route 422 over Route 4005 Pleasant Valley Road
- Bridge Replacement
- Muddy Creek Township
- Construction in 2030
- Construction Estimate: \$10M - \$15.0M



STATE GAME LANDS 95 BRIDGE

- Route 268 over Bear Creek
- Bridge Replacement
- Parker Township
- Construction in 2030
- Construction Estimate:
\$12.5M - \$15.0M



ROUTE 422 OVER ROUTE 356

- Route 422
- Bridge Replacement,
New Ramp Configuration,
Removal of Route 3031
Lions Road Bridge,
Addition of Lions Road
Connector Road &
Roundabouts, & Route
356 Intersection
Improvements
- Butler & Center
Townships
- Construction TBD
- Construction Estimate:
\$30M - \$35M



T-578 OVER LITTLE BUFFALO RUN (SHULER BRIDGE)

- T-578 (Shuler Road) over Little Buffalo Run
- Local Bridge Replacement
- Clearfield Township
- Construction: TBD
- Construction Estimate: \$500K - \$1.0M



ROUTE 8 OVER MUDDY

- Route 8 over Muddy Creek
- Bridge Replacement
- Clay Township
- Construction: TBD
- Construction Estimate: \$2.5M - \$5.0M



EAST BUTLER BORO BRIDGE NO. 2

- Route 2004 Butler Road over Bonnie Brook
- Bridge Replacement
- East Butler Borough
- Construction: TBD
- Construction Estimate: \$2.5M - \$5.0M



BUTLER COUNTY MAINTENANCE

MIKE MATTIS - COUNTY
MAINTENANCE
MANAGER

CONTACTS

- County Manager: Michael Mattis
- Assistant Manager: Brent Piccola
- Assistant Manager: Troy Adamosky
- Assistant Manager: Erann Heltzell
- Roadway Programs Coordinator: Chris Robinson
- Equipment Manager: Todd Gabriel
- Adopt-A-Highway Coordinator: Kelsey Horseman



Contact Information

351 New Castle Road

Butler PA 16001

724-284-8800

Fax Number: 724-284-1594



COUNTY PROFILE

- 33 Townships
- 23 Boroughs
- State Highway – 669 miles
- State Highway – 1,582 lane miles
- Interstate - 29 miles
- National Highway System – 106 miles
- State Routes with ADT > 2,000 – 230 miles
- State Routes with ADT < 2,000 – 299 miles
- Bridges – 354
- Railroad Crossings – 85
- Airports – 3
- County Transit Systems – 3
- Park-n-Ride Lots – 6
- PENNDOT Offices – 1
- PENNDOT Stockpiles – 8
- State Universities – 1
- State Parks – 2
- Butler County Maintenance Operating Budget – \$22,267,000



WINTER WRAP UP

2026 Winter Costs & Material Usage

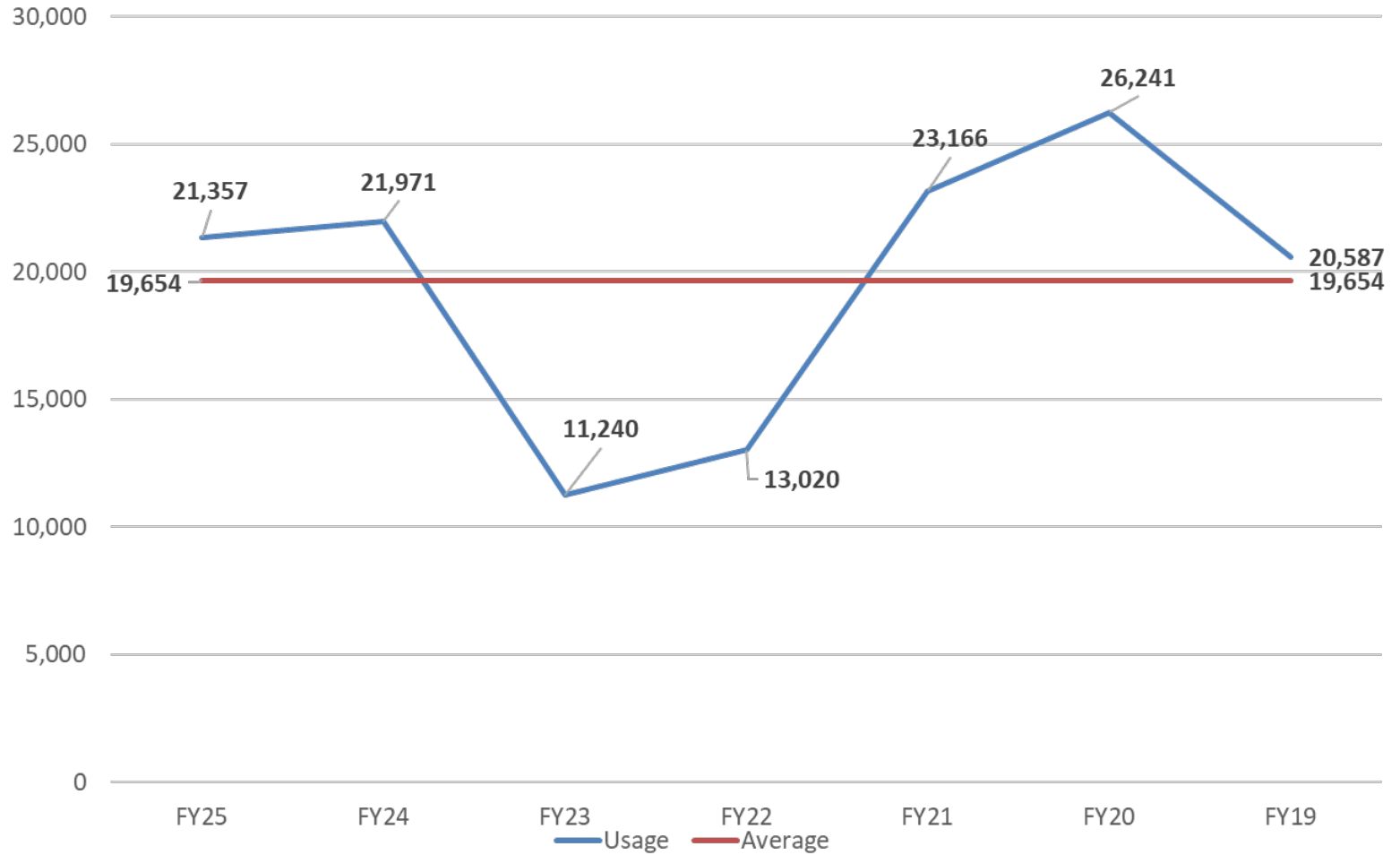
- Overall winter costs - \$ 5,966,253
- Trucks with plows/spreaders – 44
- Salt usage – 21,357 tons
- Anti-Skid usage – 6,373 tons
- Salt Brine used this winter - 37,292 gallons
- # of snow lane miles – 1,613 miles covered by 44 trucks
- Fuel, truck repairs, repair parts, vendor repairs - \$1,133,613

2025 Winter Costs & Material Usage

- Overall winter costs - \$ 5,458,038
- Trucks with plows/spreaders – 44
- Salt usage – 21,971 tons
- Anti-Skid usage – 3,801 tons
- Salt Brine used this winter - 56,695 gallons
- # of snow lane miles – 1,613 miles covered by 44 trucks
- Fuel, truck repairs, repair parts, vendor repairs - \$1,343,229



YEARLY HISTORICAL SALT USAGE



EMPLOYEE BREAKDOWN

Management Staff (6)

- (1) County Manager
- (3) Assistant County Managers
- (1) Equipment Manager
- (1) Roadway Programs Coordinator

Office Staff (4)

- (1) Roadway Programs Technician 2
- (1) Roadway Programs Technician 1
Clerical Supervisor
- (1) Clerks

Storeroom Staff (3)

- (2) Roadway Programs Technician 2
- (1) Roadway Programs Technician 1

Garage Staff (12)

- (1) Mechanic Supervisor
- (1) Garage Clerk
- (1) Transportation Operator S
- (8) Mechanics
- (1) Welder

Field Staff (103)

- (12) Foreman
- (89) Transportation Operators
- (2) Maintenance Repairman

Summer Temporary Staff (19)

- (14) Highway Maintenance Workers
- (5) College Students



EQUIPMENT



(44) tandem/single axle trucks

(1) bucket truck

(1) fuel truck

(4) anti-icing/water trucks

(1) backhoes

(1) gradall

(2) wood chippers

(2) rubber tire roller

(1) widener

(10) loaders

(1) street sweeper

(1) lowboy

(3) crash trucks/ attenuator

(3) excavators

(1) Athey/belt loader

(5) 5-ton roller

(1) pipe flusher

(1) paver

(2) graders

(1) 1-ton dump truck

(1) lowboy trailer

(1) snow blower

(1) dozer/crawler

(5) skid steers

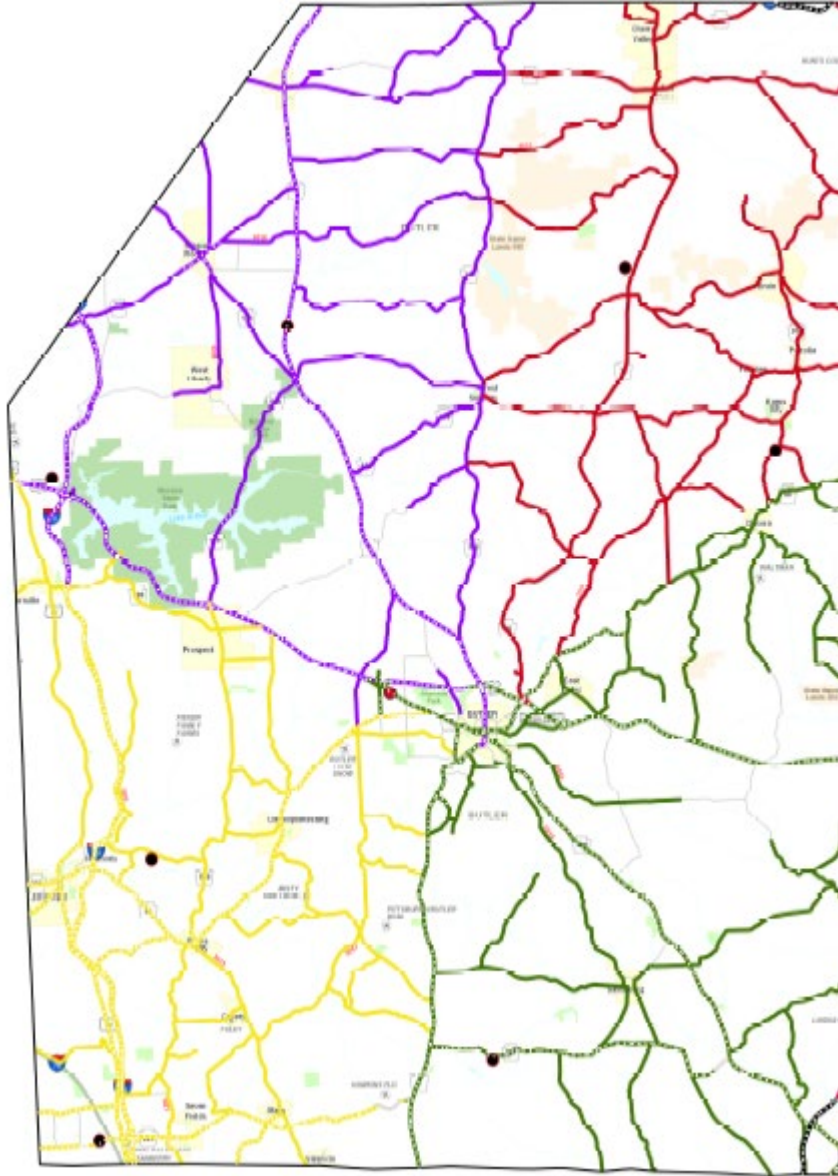
(2) 10-ton roller

(5) mowers

(1) milling machine



SECTIONAL CYCLE MAINTENANCE



Section 1 - Red

Activities being performed this summer: patching, sign repair/installation, mowing, crack sealing, spot paving, milling/filling, seal coat

Section 2 - Green

Activities being performed this summer: patching, pipe flushing, ditching, sign replacement/repair, crack sealing, mowing, milling/filling, shoulder cutting

Section 3 - Yellow

Activities being performed this summer: patching, sign repair installation, crack sealing, mowing, pipe replacement, milling/filling

Section 4 – Purple

Activities being performed this summer: patching, spot paving, crack sealing, sign installation/repair, mowing, milling/filling



MAINTENANCE ACTIVITIES

BUTLER COUNTY – MAINTENANCE ACTIVITIES

Patching



In 2025, Butler County Maintenance crews used 3,589 tons of asphalt to perform patching to repair its roadways for a total cost of \$1,617,815. We spent 17,250 work hours completing this work.

MAINTENANCE ACTIVITIES



Seal Coat

During 2025, maintenance crews used 432,042 gallons of oil to seal coat roadways throughout Butler County for an overall cost of \$2,487,836. We used 9,868 work hours to complete the work.

MAINTENANCE ACTIVITIES



Crack Sealing

In 2025, Butler County crews crack sealed 39 miles of roadway for a total of \$169,379. It took us 2,120 work hours to complete this work.

MAINTENANCE ACTIVITIES



Mechanical Patches / Spot Paving

In 2025, Butler County Seal Coat/Paving Crew used 4,495 tons of asphalt performing mechanical patches & spot paving county roadways for a total of \$647,876. It took us 4,262 work hours to complete this work.

MAINTENANCE ACTIVITIES

Shoulder Cutting

In 2025, Butler County Crews shoulder cut 321 miles of roadway. Butler County spent \$523,219 using 6,275 work hours.



MAINTENANCE ACTIVITIES

Mowing

In 2025, Butler County Crews spent 4,591 work hours on mowing roads throughout the county. It cost \$735,411



MAINTENANCE ACTIVITIES



Drainage work

Butler County crews did 7,126 feet of drainage work in 2025 including:

- Cross pipe replacement
- Parallel pipe installation
- Ditching
- Underdrain installation

Butler County spent \$555,582 using 5,211 work hours to complete the drainage activities.



MAINTENANCE ACTIVITIES

Bridge Cleaning & Sweeping

In 2025, maintenance crews spent 6,313 work hours sweeping & cleaning bridges after winter.

The total cost to do these two activities was \$536,422.



MAINTENANCE ACTIVITIES

Picking Litter & Debris

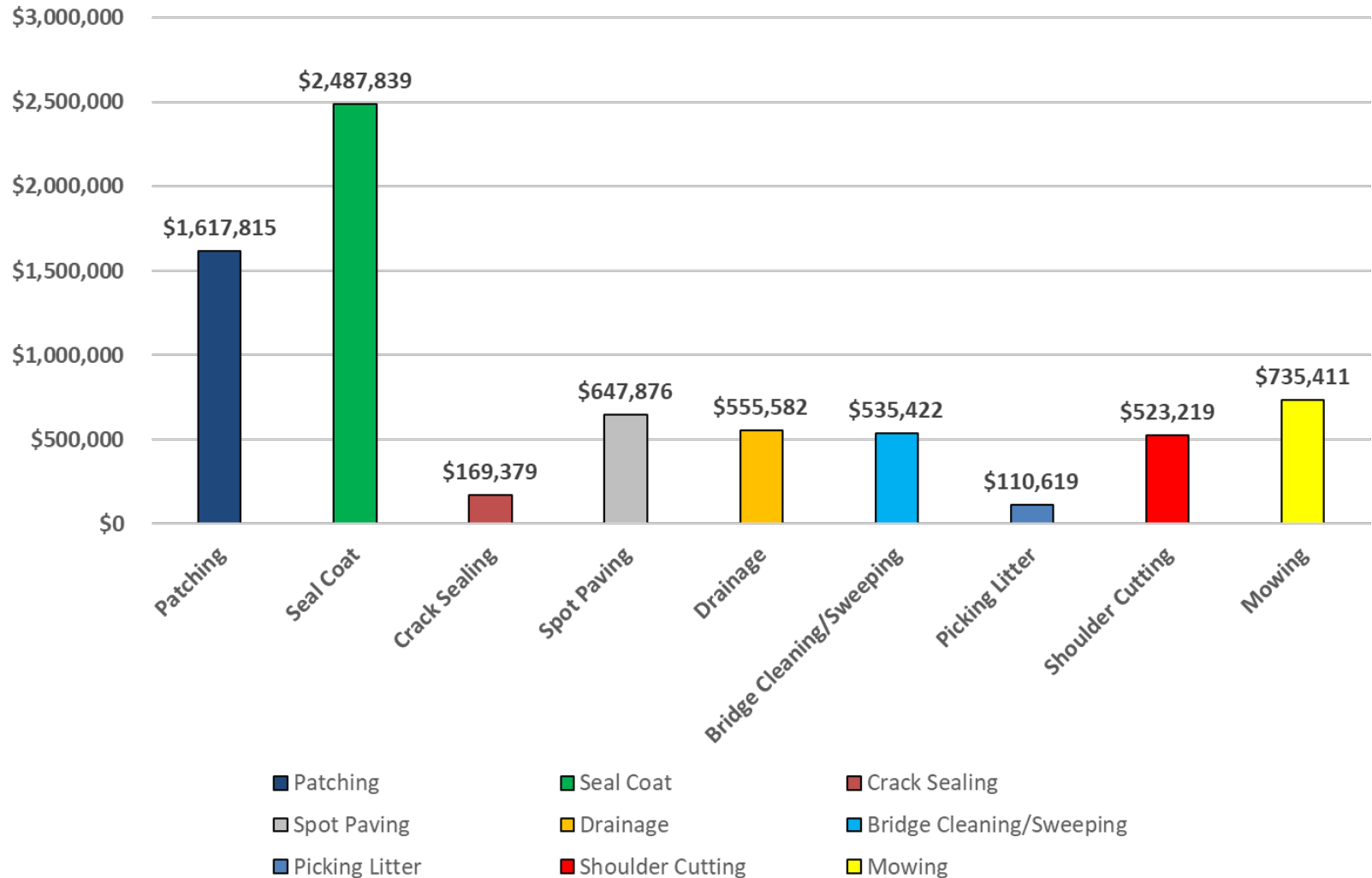
In 2025, maintenance crews spent 1,902 work hours picking litter & debris from state roadways.

The total cost to do this activity was \$110,619.



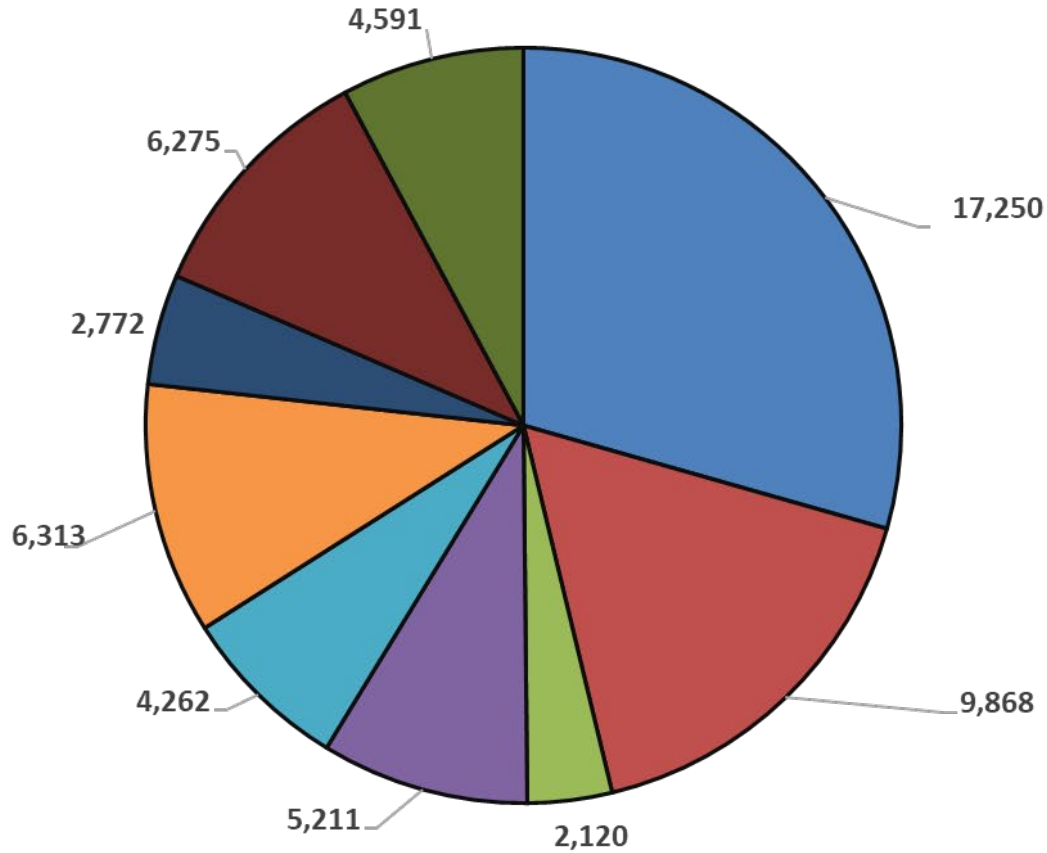
MAINTENANCE ACTIVITIES

Dollars Spent on Maintenance Activities



MAINTENANCE ACTIVITIES

Work Hours Per Maintenance Activity



- Patching
- Seal Coat
- Crack Sealing
- Drainage
- Spot Paving
- Bridge Cleaning/Sweeping
- Picking Litter
- Shoulder Cutting
- Mowing

AGILITY OPPORTUNITIES

Partnership between Butler County PENNDOT & one of the following organizations:

- Borough, Township or City
- Water, Sewer, Housing or Municipal Authority
- Councils of Government
- Public School Districts or Universities
- Charitable Hospitals
- Volunteer Fire Companies
- Volunteer Ambulance Companies

The agreed upon work between PENNDOT & the Partner must be close to or equal in value.

**For questions, please call
Butler County's Agility
Coordinator Chris Robinson @
724-284-8800.**



OPEN POSITIONS

Website: www.governmentjobs.com

Full-Time Positions:

- Equipment Operators

Seasonal Part-Time Positions:

- Highway Maintenance Workers
- Student Summer Worker



MUNICIPAL SERVICES

STEVE VASBINDER

– MUNICIPAL SERVICES
SUPERVISOR



Pennsylvania
Department of Transportation

DISTRICT 10

Municipal services contacts

- **Cory Shaffer – Butler, and Western Armstrong County** corshaffer@pa.gov 724-422-1116
- **James Breggenti - Eastern Armstrong and Indiana County** jbreggenti@pa.gov 724-422-1117
- **Marc Skarbek - Jefferson and Clarion County** mskarbek@pa.gov 724-422-1115

Municipal Services Supervisor - Steven Vasbinder
svasbinder@pa.gov 724-970-4413



LIQUID FUELS (LF)

- The LF Rate varies on the amount of LF tax the department receives.
- Calculation based 50% on mileage and 50% on population
 - 2026 the estimated mileage rate is \$3,073.44/mile
 - 2026 estimated Per Capita is \$17.33 of 2020 Census population
 - The two together are your township's 2026 estimate, which will be deposited to your municipality on March 1st if all required paperwork was filed on-time.
- LF money may be used on construction, maintenance and repair of any road, street or bridge for which the municipality is legally responsible.
- All materials used must be PennDOT approved.
- Pub 9 - POLICIES AND PROCEDURES FOR THE ADMINISTRATION OF COUNTY AND MUNICIPAL LIQUID FUELS TAXES - Updated every year.



AGILITY AGREEMENTS

- Enables PennDOT and our eligible partners to exchange services, equipment, and staff without monetary payments.
- Makes the most of limited resources, while developing strong and rewarding relationships.

Must be dollar neutral, trading of services. Snow plowing, tree cutting, mowing, brooming, training, special piece of equipment, or flushing equipment.



MUNICIPAL AGREEMENTS

Winter municipal agreements

- Snow agreements between the Municipality and the County – these are paid in dollars to the municipality
- \$1389 to \$1590/mile based on traffic (rates change in June every year)
- Extreme winter adjustment determined by Harrisburg by County (any rate adjustments) in early summer
- Rates typically are a 2% increase year to year

Summer Comprehensive Maintenance Agreements

- These are similar to winter municipal or snow agreements between the Municipality and the County – these are paid in dollars to the municipality
- Mowing, tree trimming, sweeping, etc.



ASSET MANAGEMENT

- **Bridges**
 - Over 20' get inspected but are you looking at your smaller bridges on a yearly cycle? Do you know how many bridges you own?
 - A bridge "structure" is much like your house, preventative maintenance is key, small issues addressed in a timely manor will extend the structures life exponentially.
- **Drainage**
 - Do you have a list of your drainage? Is anyone looking at your drainage system? Have they been rated?
 - Is there a priority list of drainage issues? Is there a plan for your drainage?
- **Paved Roadways**
 - Someone has spent a lot of your taxpayer's money or maybe grant money on your bigger roadways. Are they being inspected on a schedule?
 - Has the municipality been staying up on the preventive maintenance? Look into pavement preservation. Try not to let roads get to a condition that will cost your municipality a lot of money.
 - Do you have a plan in place to address them before it's too late?
- **Equipment** - has your municipality been maintaining or replacing equipment on any kind of life cycle? Are you applying for LSA grants to upgrade or replace old equipment?
- **Buildings** - has your municipality been maintaining your buildings? Does anyone do an inspection? Preventative maintenance is key, small issues addressed in a timely manor will extend the structures life exponentially.
- **Employees** - They are a huge asset. Are you managing that asset well?

BEST PRACTICES

Good management practices

- When a contractor is on site, whether it's a LF project or a grant situation, be out with them. Be available by phone to answer questions.
- Buying materials: use LF funds when you're sure it's eligible
- PennDOT Pub 213 traffic control – our guide to safe traffic control.
- Questions if we can't get you an answer or you're still confused?
 - Call PSATS - they are very helpful
- Grants – encourage the practice of applying for grants in phases.
 - Drainage and patching in Phase 1
 - Paving a portion in Phase 2
 - Phase 3 finishing the paving or sidewalk
- Hiring a Municipal Engineer by Pub 93 saves you time if you get a large grant.
- LTAP courses are a great resource.



GRANT OPPORTUNITIES

Penn DOT - Multimodal Transportation Fund

Applications accepted annually **Sept 1 to Nov 5**. All applications and all required supplemental information must be electronically submitted by close of business on July 31 for hopeful consideration at the November CFA board meeting.

Can apply for \$100K – 3M. No fee. Municipality must have 30% match. These grants are managed through the eGrant system. This is a reimbursable grant where the municipality spends the money then gets reimbursed when they provide an invoice and proof of payment to the contractor.

Department of Community and Economic Development (DCED)

Applications accepted annually **March 1 and July 31**. The goal is to ensure Pennsylvania is a premier state to do business: where we adopt and innovate the next generation of breakthroughs in a diverse mix of industry clusters; where we cultivate a resilient economy; and where we invest in our people and our communities to build a stronger Pennsylvania.

Can apply for \$100K to 3M. Fee of \$100. Has to be LF eligible. Municipality can submit invoices for payment from the grants prior to paying the contractor.

Local Shared Account LSA - falls under the DCED

The PA Race Horse Development and Gaming Act (Act 2004-71), as amended, provides for the distribution of gaming revenues through the Commonwealth Financing Authority (CFA) to support projects in the public interest within the Commonwealth of Pennsylvania. Applications accepted annually between **Sept 1 to Nov 5**.

Can apply for \$25K to 1M. Fee of \$100. Funding from Horse racing Dev Act. Municipality can submit invoices for payment from the grants prior to paying the contractor.

Keystone log in at <https://grants.pa.gov/Login.aspx>



ATV POLICY

Your municipality can request to use Penn DOT roads to connect more of your ATV routes together to create loops and connect ATV users to local businesses and attractions



DATE: May 12, 2025

SUBJECT: Snowmobile and All-Terrain Vehicle Roads Policy

TO: District Executives

FROM: Daniel P. Farley, P.E., Director
Bureau of Operations

This time and resource impacting Strike-off Letter (SOL) revises PennDOT's policy on the designation of Snowmobile and All-Terrain Vehicle (ATV) Roads as described in Chapter 11.13 of Publication 46, Traffic Engineering Manual.

75 Pa. Code §7722 establishes that PennDOT or local authorities may designate roadways under their jurisdiction as a snowmobile road, an ATV road, or both, and may, in its discretion, determine whether such road shall be closed to vehicular traffic or whether snowmobiles or ATVs may share this designated road with vehicular traffic. The law also states that no liability is imposed on PennDOT or local authorities as a result of this designation.

Based on the experience gained from the Pennsylvania Department of Conservation and Natural Resources' (DCNR) regional ATV trail network pilot in northcentral Pennsylvania, PennDOT has revised current policy to allow designation of ATV roads under certain conditions. The attached revised policy is effective immediately and will be incorporated into the next update to PennDOT's Publication 46. Note that minor corrections were also made to the sections which cover snowmobiles that do not materially affect this portion of the policy.

Also attached is the draft version of TE-120 ALL-TERRAIN VEHICLE (ATV) ROAD DESIGNATION ENGINEERING AND TRAFFIC STUDY form. This form may be used immediately to document district analysis and recommendations until a final version is published. The final version will be published to the department website when complete. Additionally, template response letters will be developed for consistent responses to public concerns based on District feedback.

As a follow-up from the statewide ATV policy webinar on Wednesday, May 7, 2025, we request volunteers to form a statewide ATV Work Group to track progress and lessons from ATV road designations and improve this policy over time. Please provide the names and contact information of any volunteers to Robert J. Pento, P.E., Chief, Traffic Engineering and Permits at (717) 783-6265 or rpento@pa.gov. The Bureau of Operations will continue to be a resource for ATV issues and any questions or concerns may be directed to Mr. Pento.

Bureau of Operations
400 North Street, 6th Floor | Harrisburg, PA 17120 | 717-787-6899 | www.penndot.gov

TE-120 (XX-25) **DRAFT**

ALL-TERRAIN VEHICLE (ATV) ROAD DESIGNATION ENGINEERING AND TRAFFIC STUDY

PLEASE TYPE OR PRINT ALL INFORMATION IN BLUE OR BLACK INK



A – LOCATION INFORMATION	
REQUESTING MUNICIPALITY OR ORGANIZATION:	CONTACT NAME, EMAIL AND TELEPHONE:
COUNTY:	
STATE ROAD(S) (List all state roads requested for ATV road designation including limits of designation)	
B – REFERENCE INFORMATION	
REFERENCE: 75 PA C.S.	SECTION(S): §7721, 7722 AND 7723
REFERENCE: PUB 46 Traffic Engineering Manual	SECTION(S): Chapter 11.13 Snowmobiles and All-Terrain Vehicles
C – REQUIREMENTS	
1. Is the request made by the local authority in which the state highway segment is located (or majority thereof); or a regional organization, recognized by both PennDOT and the Pennsylvania Department of Conservation and Natural Resources (DCNR), formed to manage ATV trail networks. Remarks: <input type="checkbox"/> YES <input type="checkbox"/> NO	
2. Has documentation been provided that an ordinance was enacted by any and all local authorities affected by the proposed designation? Remarks: <input type="checkbox"/> YES <input type="checkbox"/> NO	
3. Does the request for ATV road designation include interstates or multilane highways? <input type="checkbox"/> YES <input type="checkbox"/> NO	
4. Will the proposed ATV road act as a connector from or between (1) ATV trails or other state, local or DCNR state forest roads open to ATVs, or (2) Business destinations for ATV traffic such as campgrounds, gas stations, convenience store or restaurants? <input type="checkbox"/> YES <input type="checkbox"/> NO Remarks:	
5. Does an alternative connector exist such as a local or PA DCNR state forest road? <input type="checkbox"/> YES <input type="checkbox"/> NO Remarks:	

Confidential – Traffic Engineering and Safety Study
(For Department Use Only)

This document is the property of the Commonwealth of Pennsylvania, Department of Transportation. The data and information contained herein are part of a traffic engineering and safety study. This safety study is only provided to those official agencies or persons who have responsibility in the highway transportation system and may only be used by such agencies or persons for traffic safety related planning or research. The document and information are confidential pursuant to 75 Pa. C.S. 3754 and 23 U.S.C. 409 and may not be published, reproduced, released, or discussed without the written permission of the Pennsylvania Department of Transportation.



Free training and technical assistance on local transportation issues:

- Pavement Preservation
- Traffic Calming/Speed Management
- Pavement Markings, **Signs**, and Signals
- Stormwater/Drainage
- Asset Management
- Winter Maintenance
- Pedestrians/Bicycles/Trails/ADA
- School Transportation
- Drones/GIS
- Trucks on Local Roads



Pennsylvania
Department of Transportation
Local Technical Assistance Program



DISTRICT 10

Municipal services contacts

- **Cory Shaffer – Butler, and Western Armstrong Co**
corshaffer@pa.gov 724-422-1116
- **James Breggenti - Eastern Armstrong and Indiana County**
jbreggenti@pa.gov 724-422-1117
- **Marc Skarbek - Jefferson and Clarion County**
mskarbek@pa.gov 724-422-1115

Municipal Services Supervisor - Steven Vasbinder
svasbinder@pa.gov 724-970-4413



TINA GIBBS

**– COMMUNITY RESOURCES
COORDINATOR**



Pennsylvania
Department of Transportation

DISTRICT 10 WEB RESOURCES

- New website for Commonwealth agencies
 - [District 10 | Department of Transportation | Commonwealth of Pennsylvania](https://www.pa.gov/agencies/penndot/regional-offices/district-10.html) (<https://www.pa.gov/agencies/penndot/regional-offices/district-10.html>)
- Outreach documents will be posted under the District 10 Outreach link
 - Doing Business with PennDOT Resource Guide
 - Spring Outreach Meeting presentations & maps

ARMSTRONG • BUTLER • CLARION • INDIANA • JEFFERSON

Engineering District 10

PennDOT's Engineering District 10 is responsible for the state-maintained transportation network across Armstrong, Butler, Clarion, Indiana, and Jefferson Counties. This includes 3,180 total road miles and 1,630 total bridges.

We also work with local governments, elected officials, stakeholders and the public on keeping people and goods moving safely and efficiently in this region.

[View District 10 Contacts](#)

[View District 10 Projects](#)



A screenshot of the PennDOT District 10 website. On the left is a navigation menu for the Pennsylvania Department of Transportation, with 'District 10' highlighted and an orange arrow pointing to 'District 10 Outreach'. The main content area features a search bar, a 'Sort & Filter' button, and a list of news items. The first news item is 'PennDOT Reduces Speed Limit to 55 mph on I-80 in Clarion and Jefferson Counties' dated January 28, 2025, with tags for Clarion County, Jefferson County, District 10, and Department of Transportation. The second news item is 'PennDOT Extends the Length of the Speed Limit Restrictions on I-80 in Clarion and Jefferson Counties' dated January 14, 2025, with similar tags. The third news item is 'PennDOT Reduces Speed Limit to 45 mph on I-80 in Clarion and Jefferson Counties' dated January 16, 2025, also with similar tags. On the right side, there is a contact information box for PennDOT District 10, including the address (2550 Oakland Avenue, Indiana, PA 15701), phone (724-357-2800), fax (724-357-2084), and press office (724-357-2829). Below this is a 'Subscribe to District 10 News' section with an email input field and a 'Public Resources' section with a link to 'Clarion River Bridge Rehabilitation Brings Weather Dependent Lane'.

CONNECT WITH DISTRICT 10

Website:

[District 10 | Department of Transportation | Commonwealth of Pennsylvania](https://www.pa.gov/agencies/penndot/regional-offices/district-10.html)
(<https://www.pa.gov/agencies/penndot/regional-offices/district-10.html>)

Subscribe to District 10 news:

To receive emails when a press release is posted to the website, enter your email address into the "Subscribe to District 10 News" box on our District 10 home page.

Join our Groups on Facebook:

[Pittsburgh PennDOT](#)
[Northwest PennDOT](#)

X (Twitter):

[@511PA Erie](#)
[@511PA Pittsburgh](#)

District 10 contacts

District Executive, Brian Allen - 724-357-2806

Assistant District Executive - Construction, Paul Koza, Jr. - 724-357-2812

Assistant District Executive - Design, Alice Hammond - 724-357-2805

Assistant District Executive - Maintenance, Matthew Burkett - 724-357-2809

Community Relations Coordinator, Tina Gibbs - 724-357-2829

District Office (10-0)

2550 Oakland Avenue
Indiana, PA 15701
724-357-2800

*Standard hours of operation
are 8:00 AM to 4:30 PM*

