

CLARION COUNTY

**2025 DISTRICT 10
SPRING OUTREACH
MEETING**



Pennsylvania
Department of Transportation

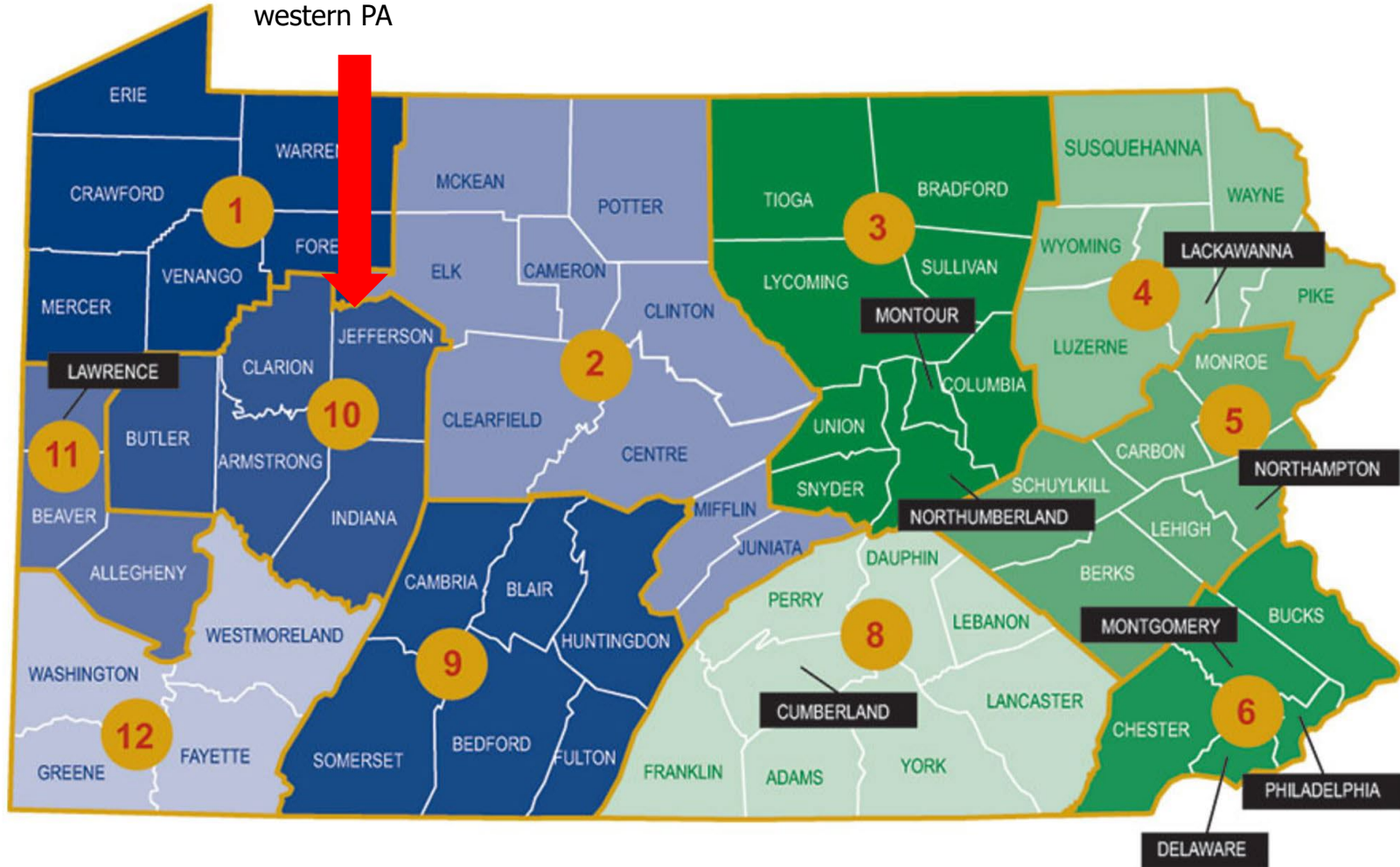
INTRODUCTIONS

- **BRIAN ALLEN, DISTRICT EXECUTIVE**
- **PAUL KOZA, ASSISTANT DISTRICT EXECUTIVE - CONSTRUCTION**
 - **PROJECTS IN CONSTRUCTION**
- **ALICE HAMMOND, ASSISTANT DISTRICT EXECUTIVE - DESIGN**
 - **PROJECTS IN DESIGN**
- **MATT BURKETT, ASSISTANT DISTRICT EXECUTIVE - MAINTENANCE**
- **JOSHUA CLINGER, CLARION COUNTY MAINTENANCE MANAGER**
 - **COUNTY MAINTENANCE OVERVIEW**
- **STEVE VASBINDER**
 - **MUNICIPAL SERVICES SUPERVISOR**
- **TINA GIBBS, DISTRICT COMMUNITY RELATIONS COORDINATOR**
 - **WEBSITE RESOURCES & SOCIAL MEDIA**



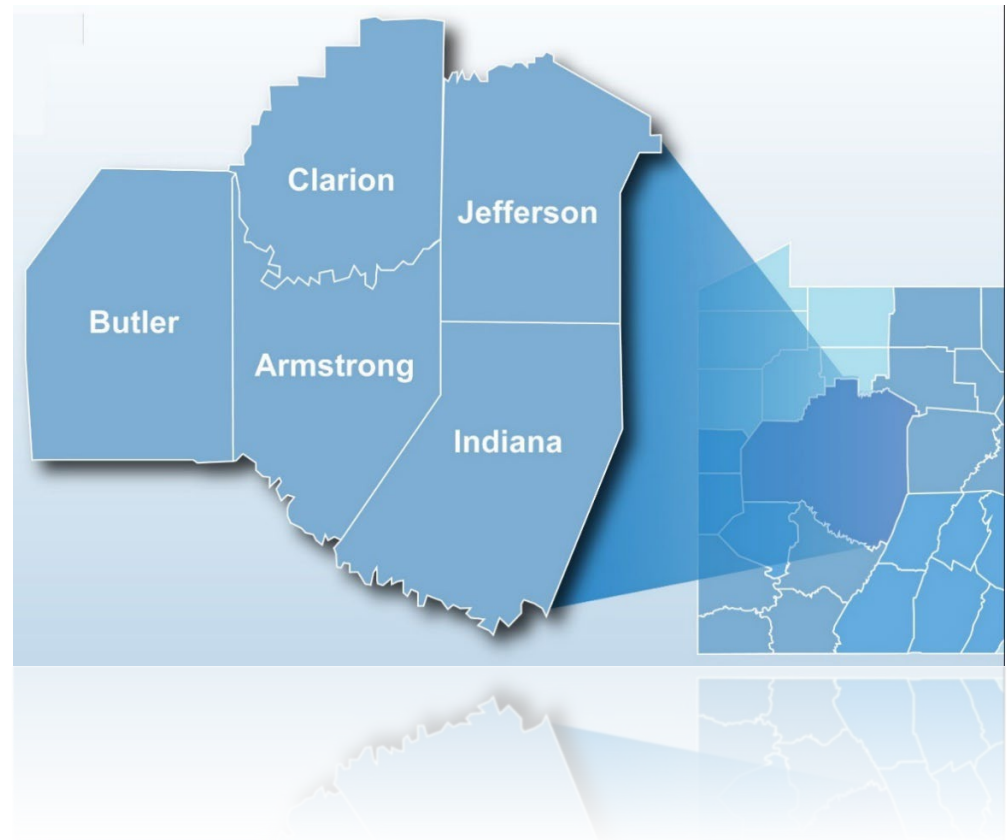
WHERE IS DISTRICT 10?

District 10 consists of Armstrong, Butler, Clarion, Indiana & Jefferson Counties in western PA



DISTRICT 10 OVERVIEW

- 5 counties
 - 800 employees
 - 1,630 bridges
 - 7,107 lane miles
 - 6,998 snow lane miles
-
- The 2025 construction & maintenance season in District 10 includes:
 - 40 construction projects
 - 195 miles of paving
 - 434 miles of seal coating
 - nearly 1,300 miles of shoulder cutting



CONSTRUCTION



Pennsylvania
Department of Transportation

CLARION RIVER ARCH BEARINGS

- Route 322
- Clarion & Paint townships
- Cost: \$1,650,000
- Anticipated Completion: 9/9/2025
- Prime Contractor: Allison Park Contractors
- Bridge preservation
 - 24-hour detour of Route 322 on weekend



ROUTE 68 DOLBY STREET TO TROUT RUN

- Route 68
- Monroe & Clarion townships
- Cost: \$13,368,068
- Anticipated Completion: 9/23/2027
- Prime Contractor: Francis J. Palo
- Safety improvement



ROUTE 2009 CHERRY RUN CHURCH BRIDGE

- Route 2009
- Toby Township
- Cost: \$1,342,007
- Anticipated Completion: 11/21/2025
- Prime Contractor: Francis J. Palo, Inc.
- Bridge replacement
- Detour: 5/27 - 8/18



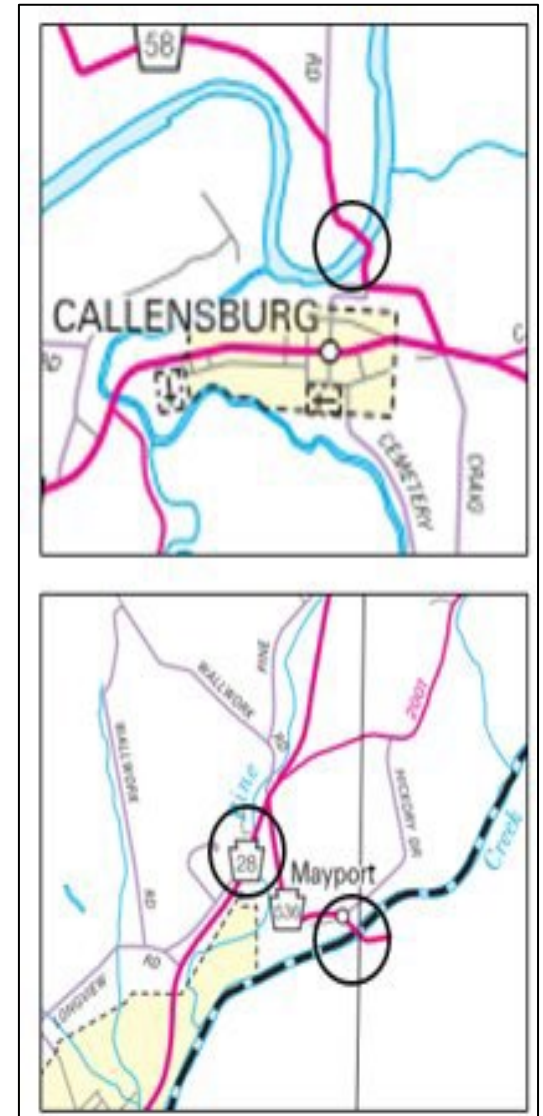
PILGRIMHAM BRIDGE #1

- Route 208
- Salem Township
- Cost: \$1,269,785
- Anticipated Completion: 8/29/2025
- Prime Contractor: S.E.T., Inc.
- Bridge replacement
- Detour: 10 days (between June 2 - Aug 6)



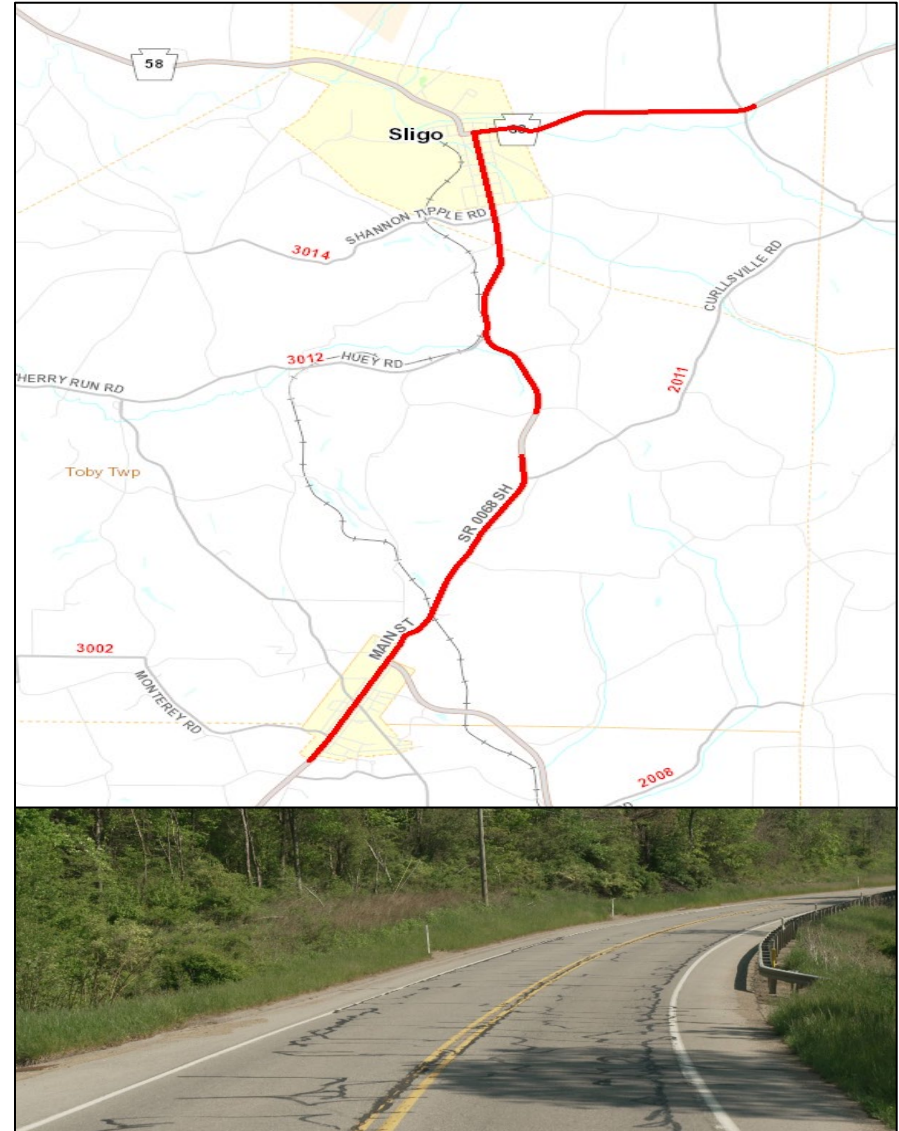
CLARION BRIDGE EPOXY GROUP

- Routes 28, 58, & 536
- Licking & Redbank townships
- Cost: \$177,148
- Anticipated Completion: 8/29/2025
- Prime Contractor: RAM Construction Services
- Bridge epoxy overlay



ROUTE 68 RIMERSBURG RESURFACING

- Route 68
- Toby & Piney townships & Sligo Borough
- Cost: \$2,741,479
- Anticipated Completion: 10/9/25
- Prime Contractor: Commercial Asphalt Supply DBA Shields Asphalt Paving
- Resurfacing project
- 6 miles



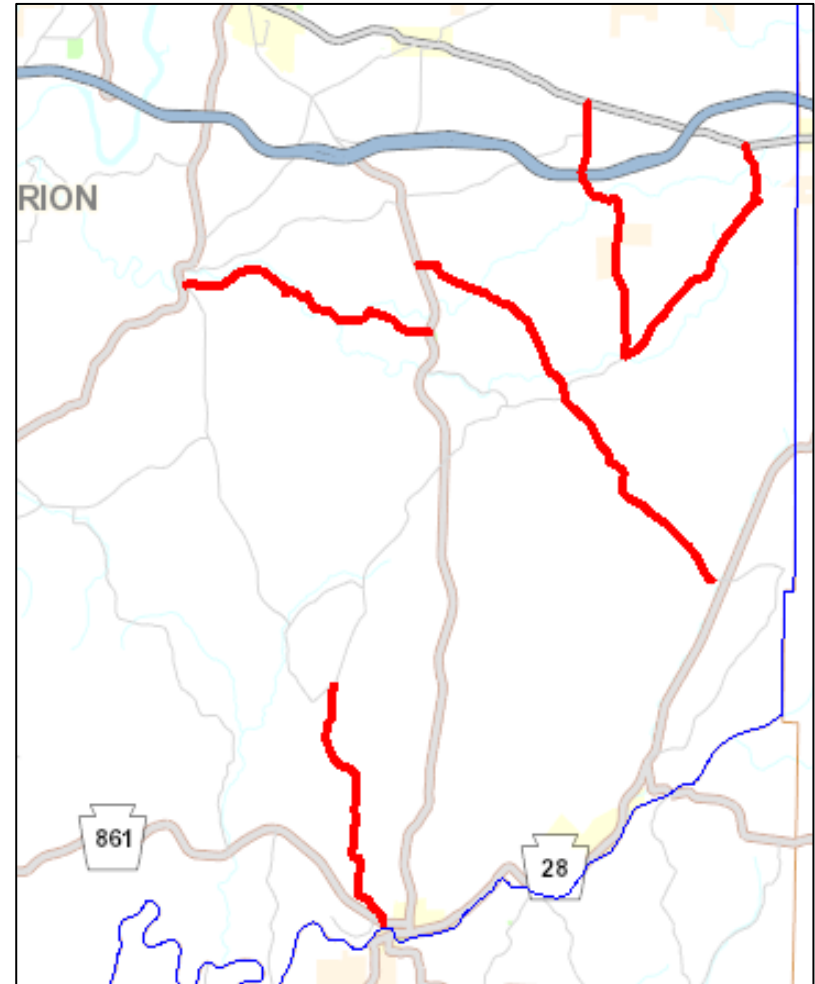
COUNTY GUIDERAIL

- County wide projects
- Mult-year contract
- Various routes
- Estimate <\$1 million
- Contractor: Penn Line Service
- Repair & replacement of guiderail



CLARION SECONDARY PAVING

- Routes 2001, 2003, 2005, 2012, & 2015 along with various P3 bridge approaches
- Various townships
- Cost: \$3 - 5 million
- Let Date: 6/26/2025
- Resurfacing project



PAINT MILLS BRIDGE

- Route 4029
- Paint Township
- Cost: \$2 - 2.5 million
- Let Date: 9/11/2025
- Bridge replacement
 - Detoured



2025 DISTRICT 10 RPM

- District wide
- Cost: < \$500,000
- Let Date: 4/17/2025
- Raised pavement marker (RPM) replacements



2025 DISTRICT 10 SMALL PAINT

- District wide
- Cost: < \$1 million
- Let Date: 5/8/2025
- Paint legend replacement



DESIGN



Pennsylvania
Department of Transportation

Roadway Projects

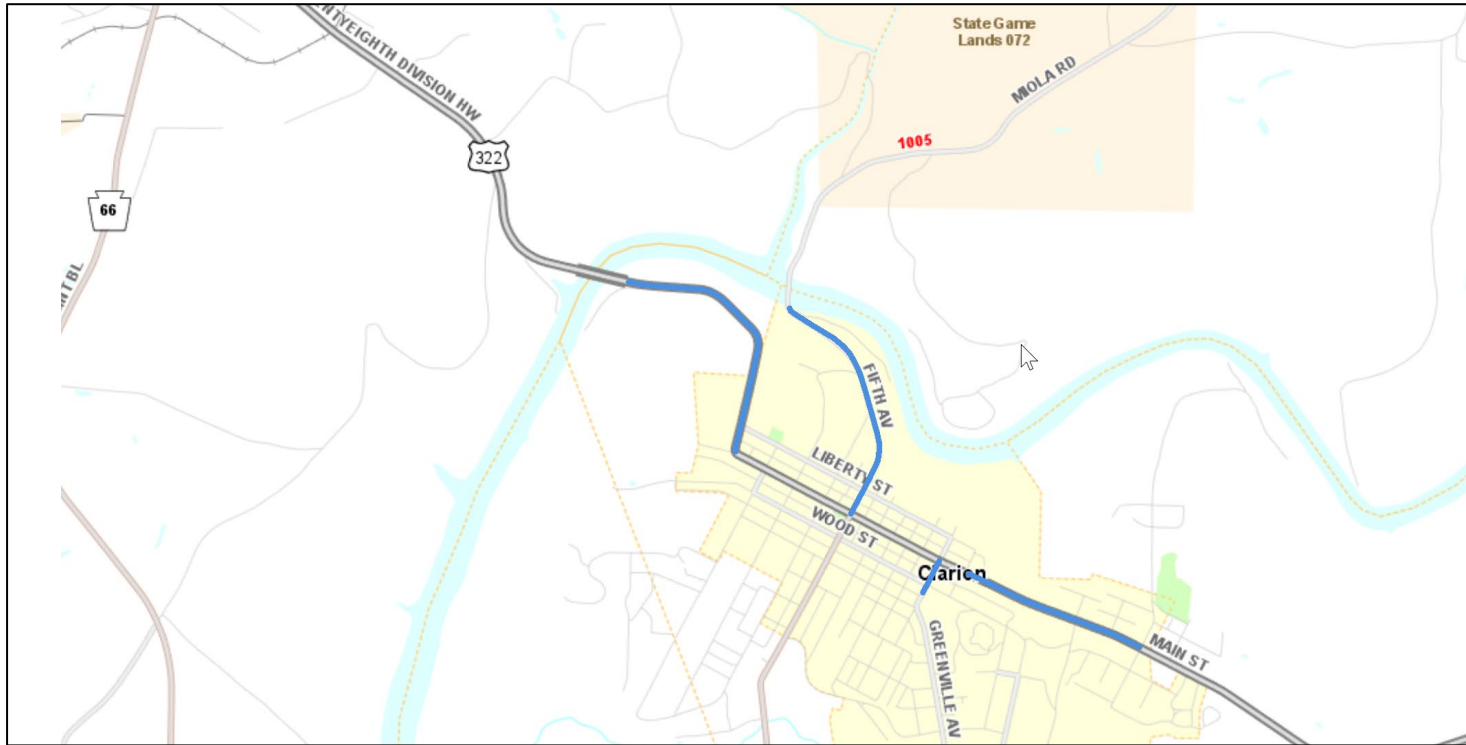


HIGH FRICTION SURFACE TREATMENT



- Various state routes
- Safety improvement
- Various municipalities
- Construction in 2026
- Construction Estimate: \$500,000 - 1 million

CLARION TO STRATTANVILLE RESURFACING



- Route 322
- Preventative maintenance
- Clarion Township
- Construction in 2026
- Construction Estimate: \$1 - 2.5 million



ELMO TO SHIPPENVILLE



- Route 322
- Preventative maintenance
- Elk Township & Shippenville Borough
- Construction in 2026
- Construction Estimate: \$2.5 – 5 million

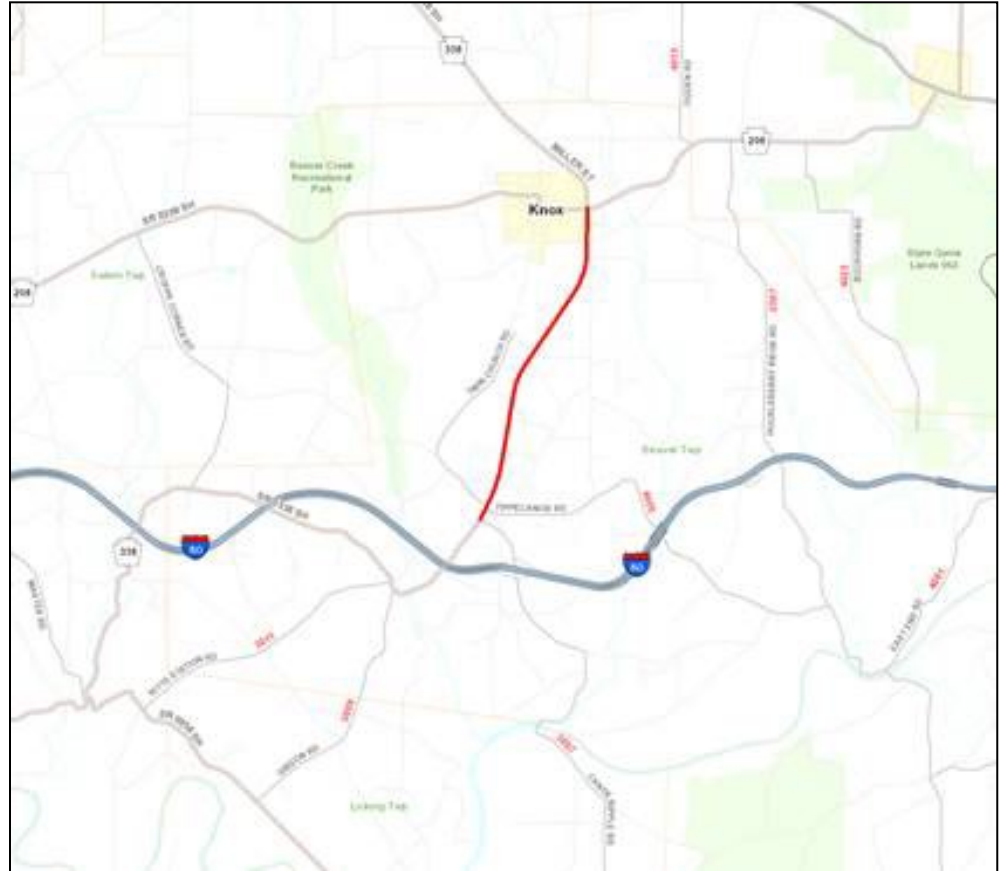
CLARION BOROUGH SAFE ROUTES TO SCHOOL & REC

- North/South 2nd Avenue
- Pedestrian safety improvements
- Clarion Borough
- Construction in 2026
- Construction Estimate: \$1 - 2.5 million



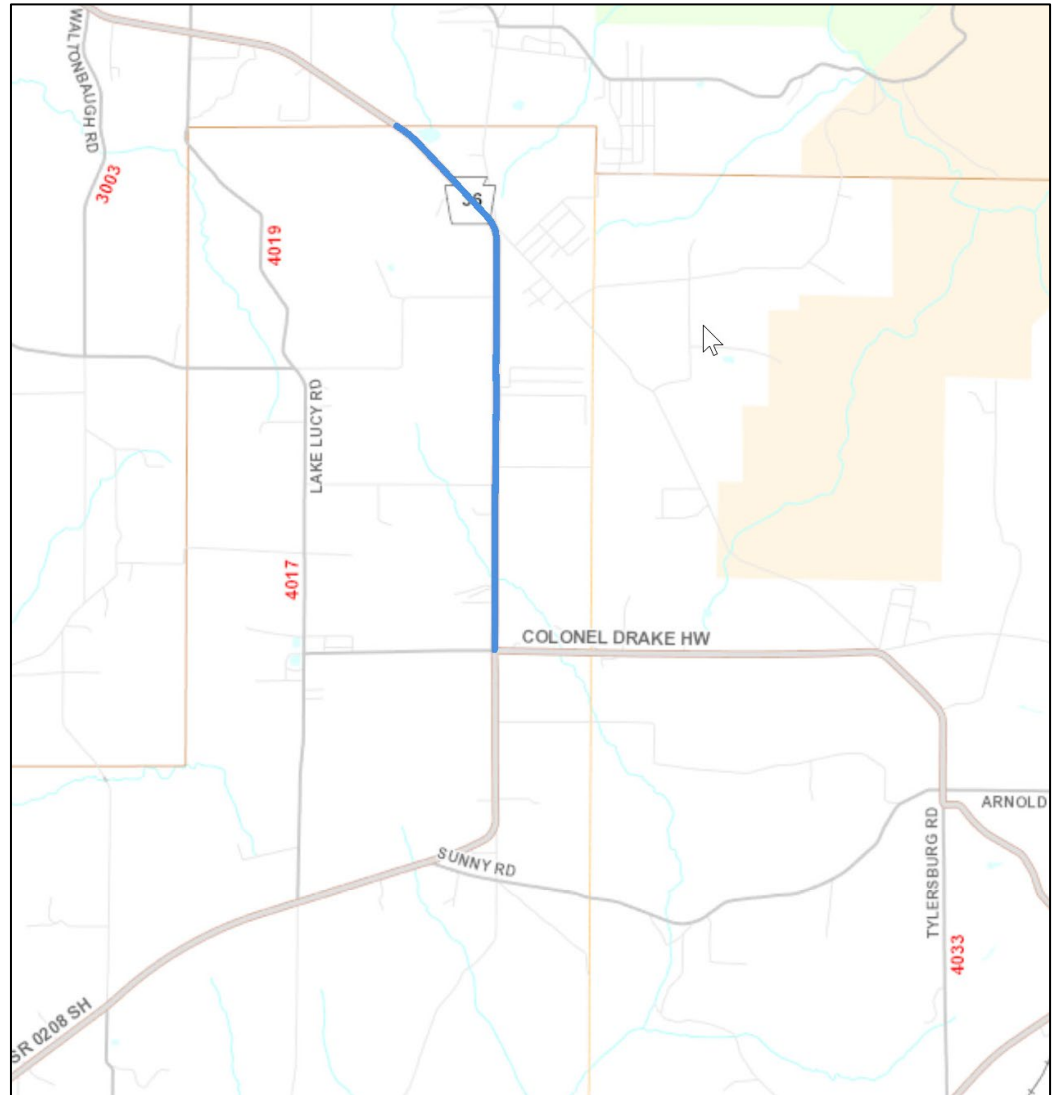
KNOX RESURFACING

- Route 338
- Resurfacing
- Knox Borough & Beaver Township
- Construction in 2028
- Construction Estimate:
\$1 - 2.5 million



FRILLS CORNER NORTH

- Route 36
- Preventative maintenance
- Washington Township
- Construction: TBD
- Construction Estimate:
\$2.5 – 5 million

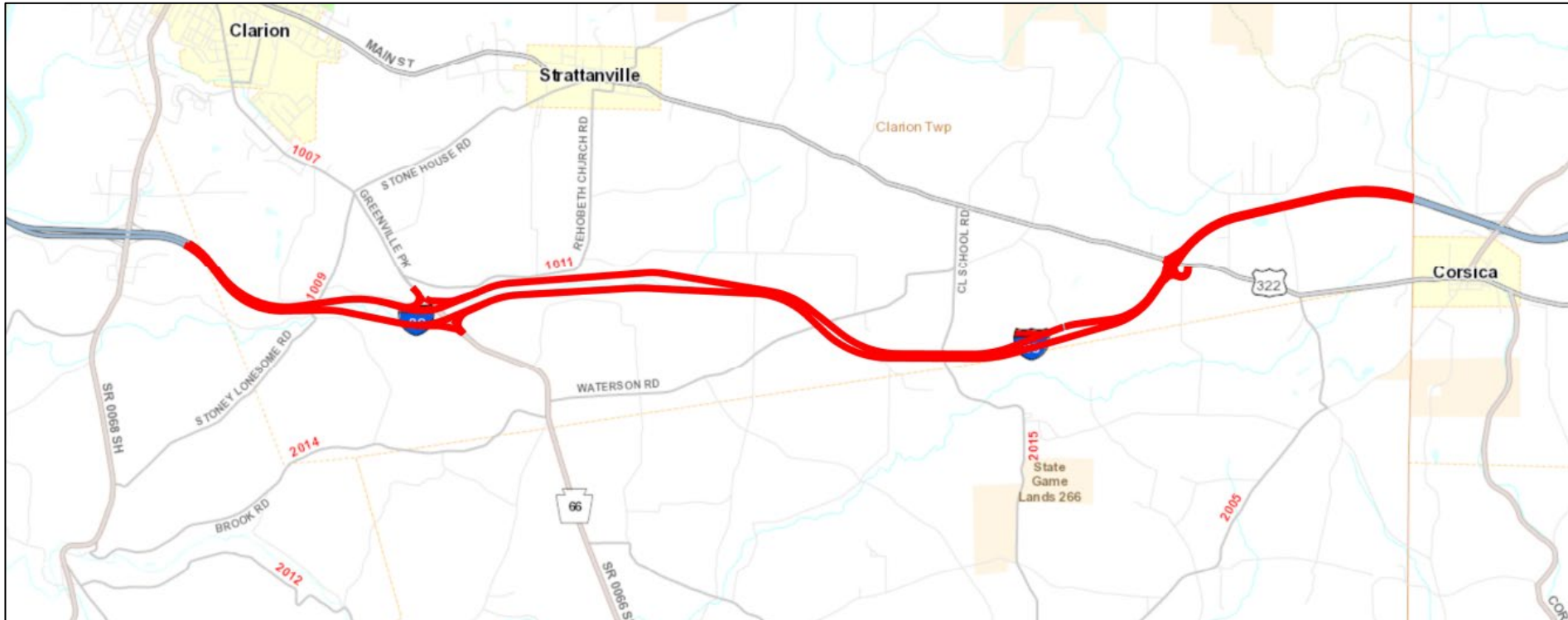


COUNTY LINE EAST PM



- Route 322
- Preventative maintenance
- Ashland & Elk townships
- Construction: TBD
- Construction Estimate: \$2.5 – 5 million

I-80 STRATTANVILLE RECONSTRUCTION



- I-80
- Reconstruction
- Clarion, Limestone & Monroe townships
- Construction: TBD
- Construction Estimate: \$100 – 125 million



Bridge Projects

SLIGO PEDESTRIAN BRIDGE

- Pedestrian bridge replacement
- Sligo Borough
- Construction in 2026
- Construction Estimate:
\$500,000 - \$1 million



BOYD RUN CULVERT REHAB

- I-80
- Bridge rehabilitation
- Beaver Township
- Construction in 2027
- Construction Estimate:
\$2.5 – 5 million



LITTLE LICKING CREEK NO.1

- Route 68
- Bridge replacement
- Sligo Borough
- Construction in 2027
- Construction Estimate:
\$1 - 2.5 million



PAINT CREEK BRIDGE

- Route 322
- Bridge replacement
- Elk Township
- Construction in 2027
- Construction Estimate: \$5 - 7.5 million



T-327 OVER CANOE CREEK

- T-327 Shettler Road
- Bridge replacement
- Beaver Township
- Construction in 2027
- Construction Estimate:
\$500,000 – 1 million



CRAIG ROAD BRIDGE

- Route 3013
- Bridge preservation
- Licking Township
- Construction in 2027
- Construction Estimate:
\$500,000 – 1 million



ROUTE 4001 OVER I-80 GROCE HILL BRIDGE

- Route 4001
- Beaver Township
- Bridge reconstruction
- Construction: TBD
- Construction Estimate: \$5 – 7.5 million



I-80 CLARION RIVER BRIDGE

- I-80
- Bridge replacement
- Paint Township
- Construction: TBD
- Construction Estimate:
\$150 - \$250 million



T-619 OVER TOBY CREEK

- T-619 Moore Drive
- Bridge replacement
- Farmington Township
- Construction: TBD
- Construction Estimate: \$1 - \$2.5 million



T-385 OVER CANOE CREEK

- T-385 Eagle Furnace Road
- Bridge replacement
- Beaver Township
- Construction: TBD
- Construction Estimate: \$1 - 2.5 million



PILGRIMHAM BRIDGE #2

- Route 208
- Bridge replacement
- Salem Township
- Construction: TBD
- Construction Estimate: \$1 - 2.5 million



HUEFFNER BRIDGE NO.1

- Route 4008
- Bridge replacement
- Knox Township
- Construction: TBD
- Construction Estimate:
\$500,000 – 1 million



CLARION COUNTY MAINTENANCE



Pennsylvania
Department of Transportation

MANAGEMENT TEAM

Clarion County Maintenance

21057 Paint Boulevard
Shippensburg, PA 16254
(814) 226-8200

County Manager – Joshua Clinger

Equipment Manager – Brant Cirrincione

Assistant Manager Northern Section –
Matthew Smith

Assistant Manager Southern Section –
Mark Culp

Roadway Programs Coordinator – Ashley
Dunkle



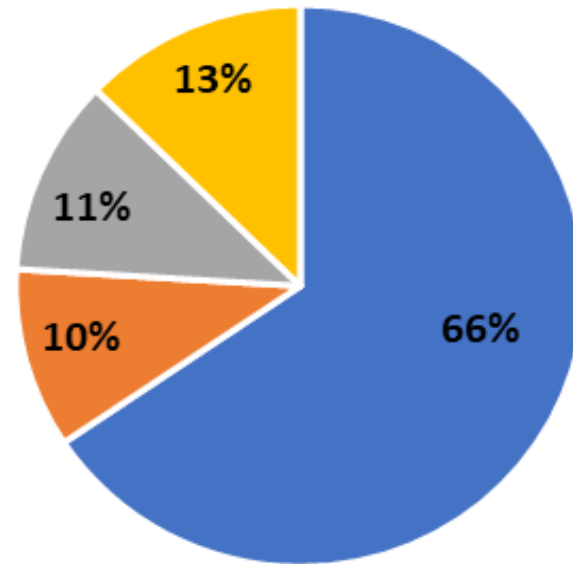
COUNTY BUDGET

Clarion County Fiscal Year 2024

Net Budget = \$13 million

- Personnel = \$8.5 million
- Operating = \$4.5 million

Budget Expenditures



■ Personnel

■ Winter

■ Equipment

■ Roadway Maintenance



2024 – 2025 Winter Material Usage

Material	Current Usage	Average Usage
Salt	9,734 tons	8,480 tons
Anti-skid	7,772 tons	5,676 tons
Salt Brine	349,345 gallons	178,510 gallons

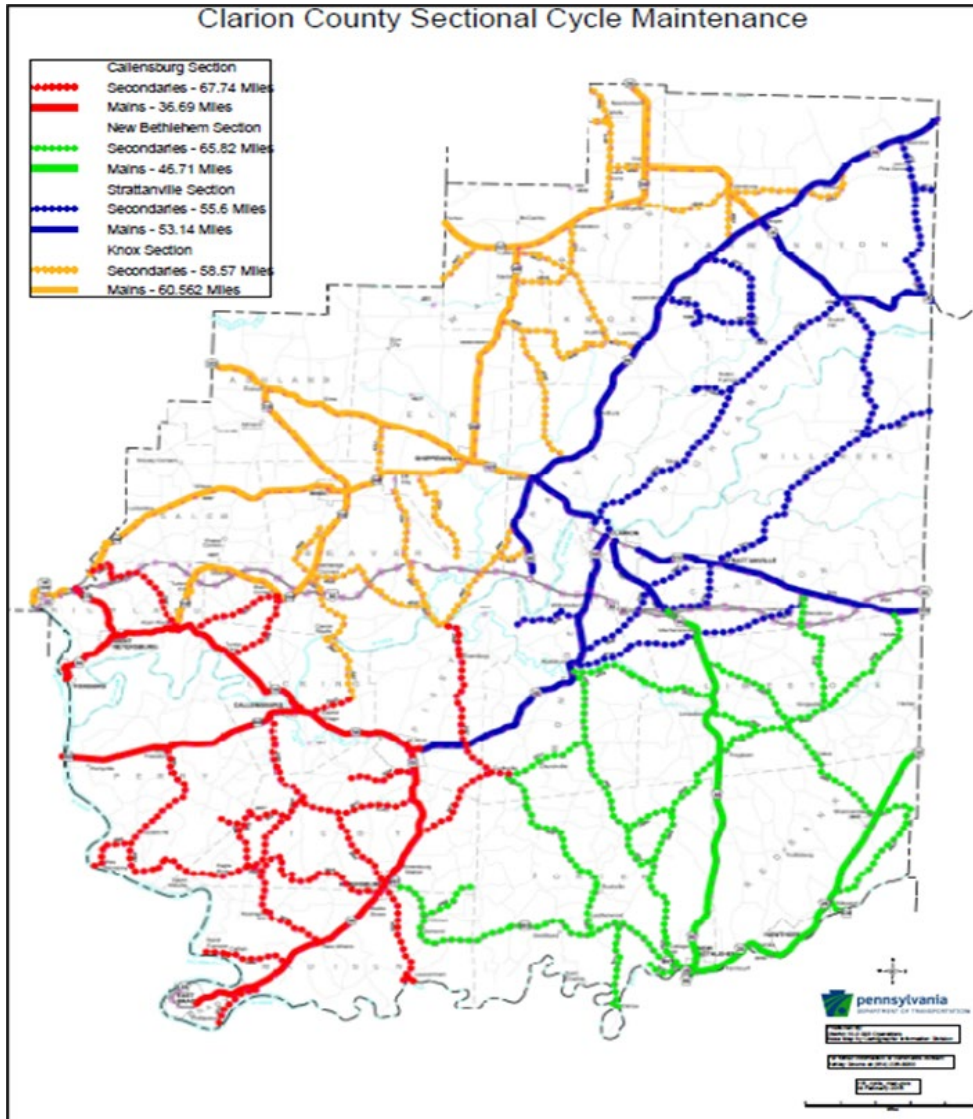
Winter Materials Budget

Current material expenses - \$1.3 million

Average material expenses - \$583,000



CYCLICAL MAINTENANCE



Section 1: Drainage

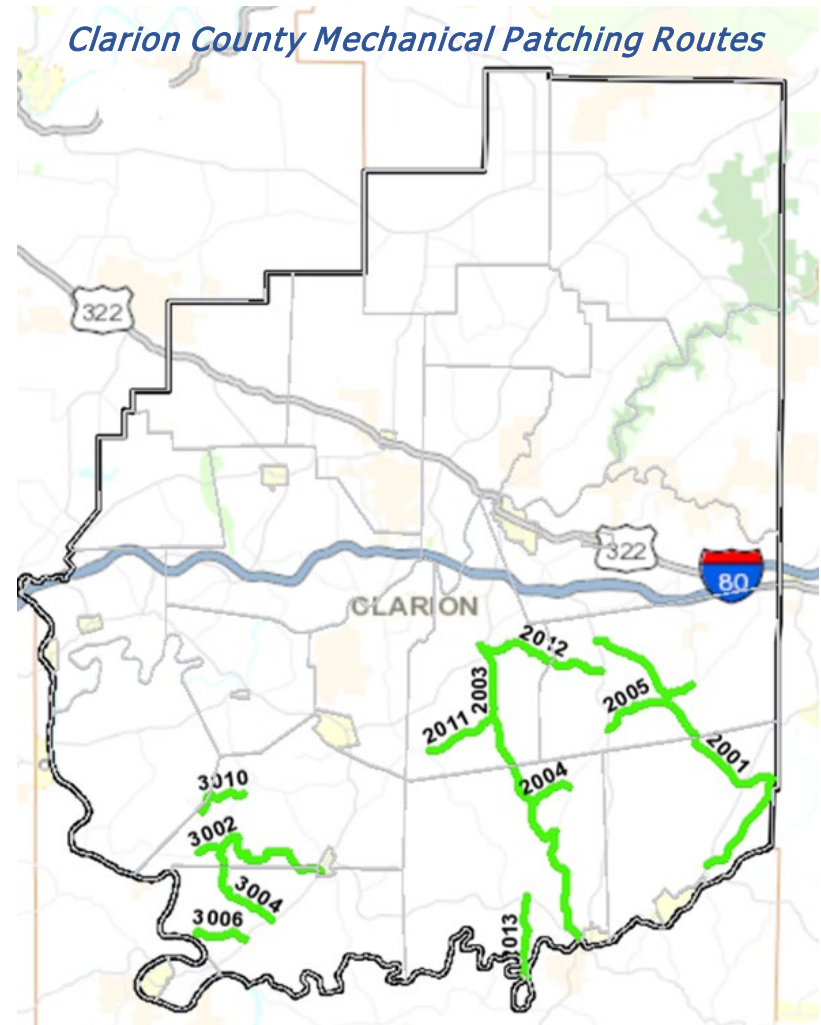
Section 2: Shoulder Cutting

Section 3: Seal Coat

Section 4: General Maintenance

MECHANICAL PATCHING

Planned quantity – 4,000 tons

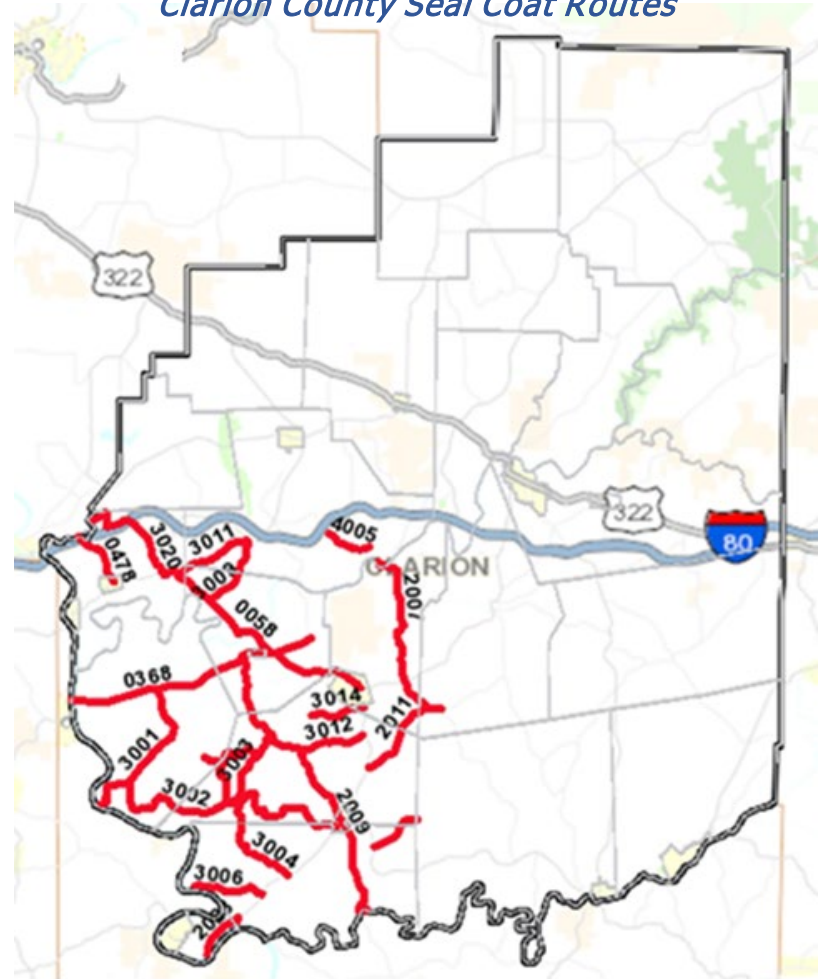


SEAL COAT

Planned quantity – 360,000 gallons
90 miles of roadway



Clarion County Seal Coat Routes

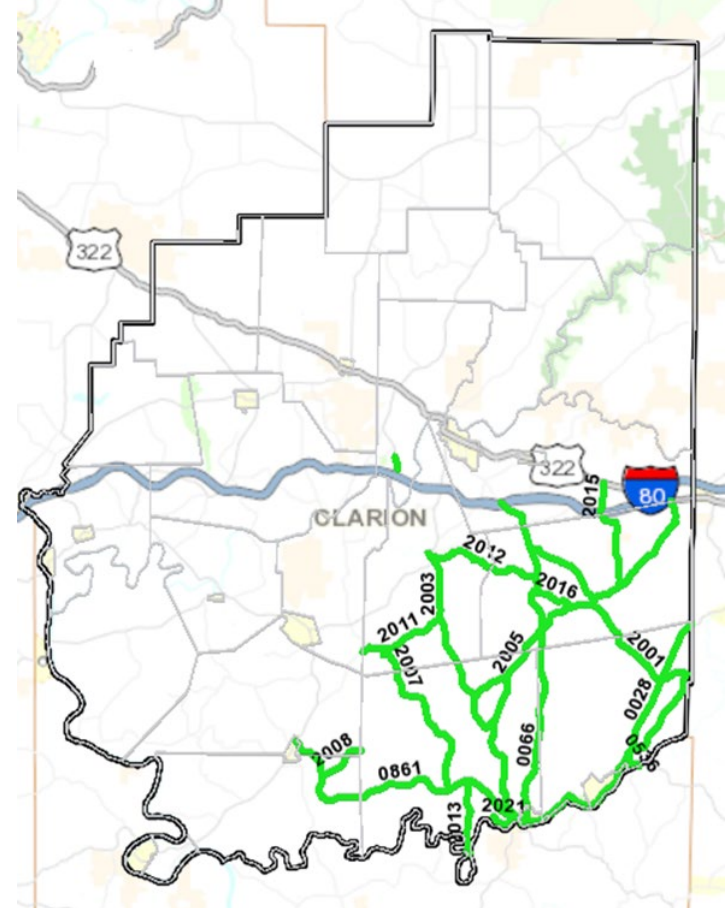


SHOULDER CUTTING

Planned quantity – 207.4 lane miles
103 roadway miles

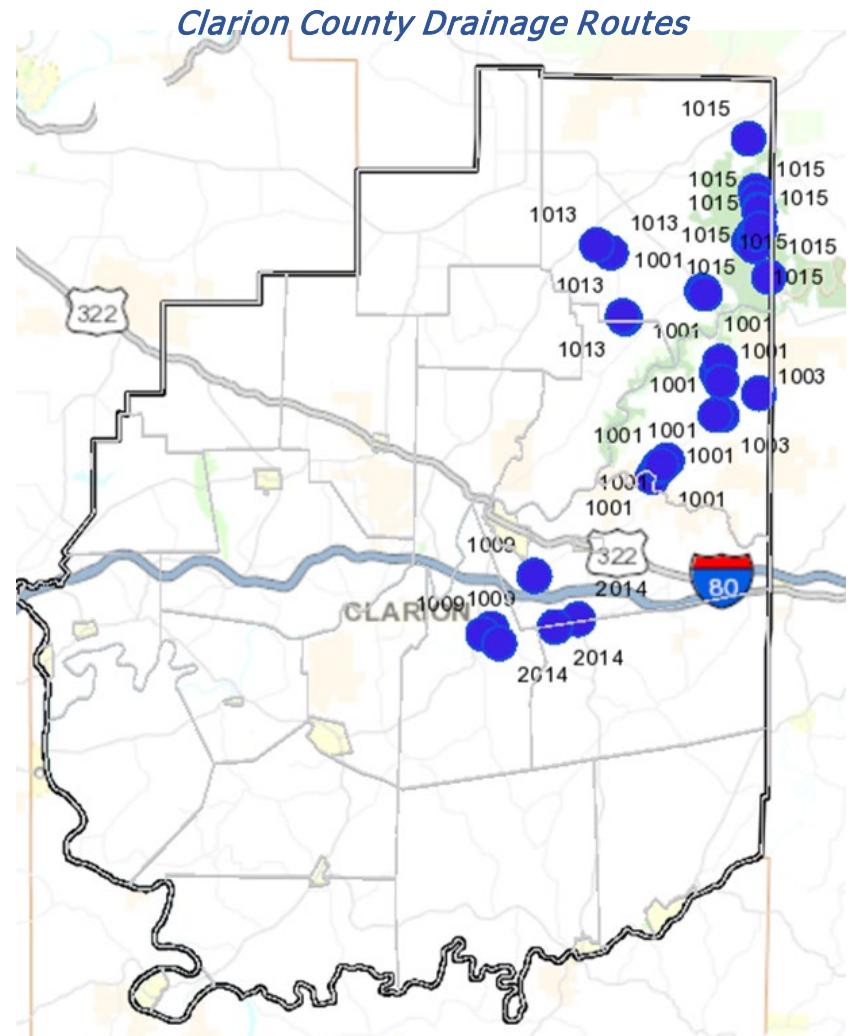


Clarion County Shoulder Cutting Routes



PIPE REPLACEMENT

Planned quantity – 1,720 feet of pipe



CRACK SEALING

Planned quantity – 94.7 lane miles



Clarion County Crack Sealing Routes



DEPT FORCE BRIDGE

Summer 2025 Work

- I-80 68 mm EB/WB - Repair/Replace concrete
- I-80 45 WB – Repair/Replace slope wall
- I-80 44 WB – Repair/Replace slope wall
- Route 3007 seg 90 – Repair pier
- Route 3007 seg 50 – Remove vegetation
- Route 3006 seg 10 – Repoint masonry
- Route 36 seg 4 – Repair concrete deck, repair pier
- Route 1001 seg 70 – Reseal deck joint, repair concrete beam, abutment, parapet & deck
- Route 368 seg 10 – Repair bridge parapet, remove vegetation
- Route 2007 seg 210 – Repair abutment, repair concrete deck
- Route 28 seg 30 – Repoint masonry
- Route 3003 seg 70 – Repair culvert barrel
- Route 2009 seg 160 – Repair headwall wing, repair culvert barrel
- Route 66 seg 240 – Rock protection
- Route 58 seg 170 – Rock protection
- Route 58 seg 150 – Rock protection
- Route 38 seg 70 – Repair abutment



COUNTY AGILITY

AGILITY PROGRAM

Agility is a tool to build relationships with local communities by sharing & exchanging services & resources.



Previous Clarion County Agility Agreements

✓ **Clarion County Career Center**

- **PennDOT** - perform maintenance on parking lot & access road.
- **Career Center** – Building & trades students built a storage shed for use at PennDOT stockpiles.

Call now for Agility opportunities

(814)226-8200



MUNICIPAL SERVICES



Pennsylvania
Department of Transportation

DISTRICT 10

Municipal services contacts

- **Cory Shaffer – Butler, and Western Armstrong Co**
corshaffer@pa.gov
- **James Breggenti - Eastern Armstrong and Indiana County**
jbreggenti@pa.gov
- **Marc Skarbek - Jefferson and Clarion County**
mskarbek@pa.gov

Municipal Services Supervisor - Steven Vasbinder
svasbinder@pa.gov

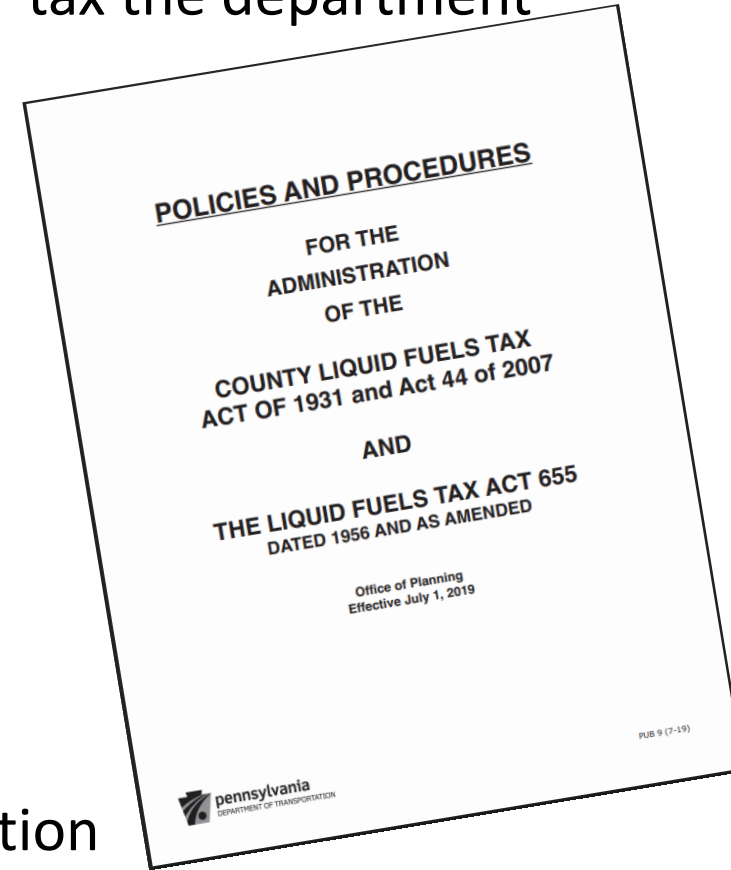


TOPICS

- Liquid Fuels info
 - Rates and what it covers
 - What qualifies as liquid fuels
- Agreements
 - Agility
 - Winter municipal (any rate adjustments)
 - Summer Comprehensive Maintenance Agreement
- Grant Opportunities
 - Types of grants they can apply for with application periods
 - Contacts
- What other municipalities are doing that are Best Practices for issues/concerns that other's may be dealing with.



The LF Rate depends upon the amount of LF tax the department receives.



How does the LF get calculated?

- Based 50% on Milage and 50% on population
 - 2024 the milage rate was \$3,188.01 / mile mild increase to \$3,191.02
 - 2024 \$17.97 / capita of population have not got a solid number for 2025

LIQUID FUELS

- General Rule of Thumb
 - May be used on construction, maintenance and repair of any road, street or bridge that the municipality is legally responsible for!
- All materials used must be PennDOT approved!
 - Form 4171 Certification of Materials is required for all materials received



LF PUB 9 34 ACCEPTABLE EXPENDITURES:

1. Construction, reconstruction, maintenance, and repair of public roads/ streets or bridges for which the county or municipality is legally responsible.
2. Costs of property damages resulting from road and/or bridge construction, reconstruction, or maintenance.
3. Purchase of right-of-way for road and/or bridge construction, reconstruction, or maintenance.
4. Compensation of viewers for services in eminent domain proceedings involving roads, highways, and bridges.
5. Interest and principal payments on road or bridge loans and bonds or sinking fund charges for such bonds becoming due within that current calendar year.
6. Any road or bridge work by order of the Public Utility Commission (PUC).
7. Culverts and drainage structures.
8. Acquisition, maintenance, repair, electrification, and operation of traffic signs and traffic signal control systems at intersections and/or railroad crossings.
9. Maintenance on alleys, ways, and courts in counties, townships, boroughs, and cities provided the county can demonstrate it has a legal responsibility for the alley, way, or court.
10. Street lighting in excess of taxes and bridge and interchange lighting.
11. Minor equipment, equipment rentals, or repair parts for road maintenance vehicles.
12. Road drags and snow fence.
13. Purchase of PennDOT-approved materials.
14. Major road and bridge equipment requiring cost quotes.
15. Salary and benefit costs of road crews or employees performing work on countyowned roads and bridges. The county must document these cost with daily time records (MS-907 or its equivalent), indicating type or location of work performed.
16. County Engineer's salary and benefit costs for road or bridge work.



PUB 9 ACCEPTABLE EXPENDITURES:

17. Debris removal from the roadway and its gutters and shoulders.
18. Erection of street name signs, traffic directing signs, and traffic signal control systems.
19. Brush removal to improve sight distance.
20. Lane and crosswalk painting and marking.
21. Cleaning of inlets and culverts.
22. Certain structures such as salt storage sheds or buildings built to house county or municipal owned road equipment.
23. Engineering fees (fees in excess of 10% of the total contract price must be documented and justified to the satisfaction of the District Municipal Services Office).
24. Curb ramps to provide access by individuals with disabilities in accordance with the current ADA and PennDOT standards.
25. Driveway grade adjustments due to construction or reconstruction.
26. Liability insurance for road and bridge equipment and vehicles when the named beneficiary is the entity's Liquid Fuels Tax Fund.
27. Administrative costs to a maximum of 10% of that year's total allocation, including benefits, overhead, and other administrative charges for county employees directly involved in activities covered by the Act.
28. Indirect engineering and transportation planning costs. Note: the total indirect cost that may be expended in any year from the County Liquid Fuels Tax Fund is limited to the 10% administrative allowance (see number 26 above). Direct engineering costs either contracted or in house are not included as either indirect or administrative costs. The reimbursement of prior year indirect costs is not permitted nor is any carryforward of eligibility authorized.
29. Ferry boat operations, where applicable.
30. Appraisal fees for infrastructure assets (as required by GASB 34).
31. Curbs that are part of the drainage system.
32. Payables for year-end county expenses (should be satisfied within 60 days of year-end).
33. Inspection costs associated with roadway and bridge structures such as signs, signals, culverts, drainage structures and bridges.
34. Gasoline with accompanying logs showing the vehicle and appropriate usage.



LF PUB 9 12 UNACCEPTABLE EXPENDITURES:

1. Parks, municipal buildings, or playgrounds.
2. Police departments, fire departments, or historic, charitable, or civic projects.
3. Private property drives.
4. Sidewalks not involved with road or bridge realignment projects.
5. Sanitary sewers, water lines, or utility costs.
6. Garbage or recycling pickup.
7. Construction projects without prior PennDOT approval.
8. Undocumented payroll expenditures.
9. Gasoline purchases for private vehicles.
10. Retroactive expenditures
11. Expenditures that do not comply with the Act or County Code.
12. Lump sum bidding unless specified under measurement and payment in PUB 408 and/or PUB 447.



LIQUID FUEL - PROJECT

1.7 PROCEDURE TO ESTABLISH A CONSTRUCTION/ RECONSTRUCTION AND/OR RESURFACING PROJECT

The following criteria is used to determine when Project Approval is required for work on county and local roads utilizing Liquid Fuels Tax funds, when construction, reconstruction, and/or resurfacing work exceeds one inch or more in depth, as well as other activities.

Criteria To Determine When Project Approval Is Required	
Bituminous surface	A depth of 1" or greater
Concrete surface	50 square yards or more
Widening	A new lane and/or more than two feet on either or both sides of existing roadway
Relocation	All
Bridges	For bridge maintenance/preservation activities, confer with the District Municipal Services Office to determine if a project approval is required. All rehabilitations, replacements or any other work that affects the carrying capacity of the structure or the waterway areas require project approval.
Other	Reconstruction, such as removal and replacement of one inch or more of existing road material, including base and surface. This includes cold-mill recycling and reclamation work.
Traffic signals and lighting	New installations
Guiderail	New installation location or replacement with upgrade or better technology.
Pipe	New installation location or replacement with a larger size.

Figure 1.a Criteria To Determine When Project Approval Is Required



LF QUALIFIERS - TWP FIRST CLASS

1. A copy of the ordinance, resolution or other official action showing that the municipality has adopted the street as a public highway, and a copy of a map showing the street location. (A Deed of Dedication must be on file with the municipality.)
2. In townships of the first class, the street must have a minimum right-of-way of at least 33 feet, with the exception of built-up areas where the right-of-way can be reduced to 24 feet.
3. The street must have a minimum cartway of 16 feet, paved or unpaved.
4. The street must be capable of being driven safely at 15 miles per hour.
5. A dead-end street must be at least 250 feet in length measured from the last intersection and provided with a cul-de-sac having a minimum radius of 40 feet.
6. The street must be accessible from an existing public street or roadway.

NOTE: In following these guidelines and submitting the necessary documents to the District Municipal Services Office before September 1 of each year, PennDOT will be able to process added mileages quickly.



LF QUALIFIERS TWP SECOND CLASS

1. A copy of the ordinance or resolution passed by the township to adopt the road as a public highway, and a copy of the plot plan showing the road location. (A Deed of Dedication must be on file with the municipality).
2. Proof that the ordinance or resolution has been recorded in the county courthouse (Clerk of Courts or appropriate county recording office) showing the court seal, page, and document number where recorded.
3. The road must have a minimum right-of-way of 33 feet.
4. The road must have a minimum cartway of 16 feet, paved or unpaved. (Necessary shoulder widths are excluded).
5. The road must be capable of being driven safely at 15 miles per hour.
6. All dead-end roads must be at least 250 feet in length measured from the last intersection and be provided with a cul-de-sac having a radius of at least 40 feet.
7. The roadway must be accessible from an existing public street or roadway.

NOTE: In following these guidelines and submitting the necessary documents to the District Municipal Services Office before September 1 of each year, PennDOT will be able to process added mileages quickly.



LF - CITIES, BOROUGHS AND TOWNS

1. A copy of the ordinance showing that the municipality has adopted the street as a public highway, and a copy of the borough or city map showing the street location. (A Deed of Dedication must be on file with the municipality.)
2. A copy of the ordinance must be on file in the municipality's ordinance book.
3. The street must have a minimum **right-of-way of at least 16 feet**.
4. The street must have a minimum cartway of at least 16 feet, paved or unpaved.
5. The street must be capable of being driven safely at 15 miles per hour.
6. A dead-end street must be at least 250 feet in length measured from the last intersection and provided with a cul-de-sac having a radius of at least 40 feet.
7. The street must be accessible from an existing public street or roadway.

NOTE: In following these guidelines and submitting the necessary documents to the Municipal Services District Office before September 1 of each year, PennDOT will be able to process added mileages quickly



AGREEMENTS AGILITY

- The Agility Program been around since 1996 to enable service-for-service exchanges with eligible Partners, such as municipal governments, state and federal agencies, public colleges and universities, school districts, councils of government, metropolitan and rural planning organizations, water, sewer, housing and other municipal authorities, charitable hospitals, volunteer fire and rescue companies, and volunteer emergency medical services companies.
- Agility enables PennDOT and its eligible Partners to exchange services, equipment, and staff without monetary payments. Agility helps PennDOT and its Partners make the most of limited resources, while developing strong and rewarding relationships.

Must be Dollar neutral, trading of services. Snow plowing, Tree cutting, mowing, brooming, training, special piece of equipment, brooming or flushing equip.

10-1 (2-22)

pennsylvania
Department of Transportation

AGILITY AGREEMENT

Agreement Number: _____
Federal ID Number: _____

Effective Date: (Department will insert)

AGILITY AGREEMENT
(Attachments A, B, C and D)

THIS AGREEMENT is made and entered into by and between the Commonwealth of Pennsylvania, acting through the Department of Transportation, ("DEPARTMENT") and the following public procurement unit(s) as defined in the Commonwealth Procurement Code, 62 Pa. C.S. § 101, et seq., ("PARTNER(S)"),

Partner: _____ Federal ID Number: _____
City: _____ County: _____

NOW, THEREFORE, in accordance with the Terms and Conditions of Attachment A, attached to and made a part of this Agreement, the parties, with the intention of being legally bound, agree to perform those activities defined in the Agility Work Plan which, upon completion by the parties, will be attached to and made a part of this Agreement.

Attachment B, which lists the services that may be performed by the parties, is made a part of this Agreement.

Modifications to the services to be performed as identified in the Agility Work Plan may be made at any time in writing during the term of this Agreement or the renewal period described in Paragraph 3.

This Agreement shall be effective for an initial five- (5-) year period, beginning on the date noted in the upper left-hand corner, unless terminated sooner for either cause or convenience upon thirty (30) days' written notice by either party to the other, at which time all obligations shall cease; provided, further, that termination for convenience shall be subject to reconciliation of outstanding balances.

By renewal letter, not requiring approval by either the Office of Chief Counsel or Office of Comptroller, the parties can extend the Agreement for one three- (3-) year term beyond the initial five- (5-) year term. The three- (3-) year renewal period shall begin on the termination date of the initial term. The three- (3-) year renewal period shall similarly be subject to termination for either cause or convenience upon thirty (30) days' written notice by either party to the other, at which time all obligations shall cease; and, as during the initial period, termination for convenience shall be subject to reconciliation of outstanding balances. The PARTNER shall return the letter, signed by its duly authorized agent and accompanied by a resolution authorizing the agent to sign on the PARTNER's behalf, to the DEPARTMENT's appropriate county agility coordinator at least sixty (60) days before the end of the initial term. A sample renewal letter is attached to and made a part of this Agreement as Attachment C. In any event, this Agreement shall not be effective after eight (8) years from the date noted in the upper left-hand corner.

The Pennsylvania Right-to-Know Law, 65 P.S. §§ 67-101-1104, applies to this Agreement. Therefore, the Agreement is subject to, and the PARTNER shall comply with the clause entitled, "Contract Provisions - Right to Know Law," attached as Attachment D and made a part of this Agreement. As used in this Agreement, the term "Contractor" refers to the PARTNER.

1



MUNICIPAL AGREEMENTS

- **Winter municipal agreements**

- snow agreements between Municipality and the County – these are paid in dollars to the municipality
- \$1389 / mile to 1590 based on traffic
- Extreme winter adjustment determined by Harrisburg by County (any rate adjustments) early summer
- Rates typically 2% increase year to year

- **Summer Comprehensive Maintenance Agreements**

- These are Similar to Winter municipal or snow agreements between Municipality and the County – these are paid in dollars to the municipality
- Mowing, Tree trimming, sweeping, etc.



GRANT OPPORTUNITIES

Keystone log in at <https://grants.pa.gov/Login.aspx>

Penn DOT - Multimodal Transportation Fund

Applications accepted annually between Sept 1st to Nov 5th. All applications and all required supplemental information must be electronically submitted by close of business on July 31st for hopeful consideration at the November CFA board meeting.

Can apply for \$100k to 3 Million, No fee, Municipality must have 30% match. These grants are managed through eGrant system, This is a reimbursable grant where the municipality spends the money then gets reimbursed when they provide an invoice and proof of payment to the contractor

Department of Community and Economic Development

DCED same location as above or 1-866-466-3972

Applications accepted annually March 1 and July 31. Goal is to ensure Pennsylvania is a premier state to do business, where we adopt and innovate the next generation of breakthroughs in a diverse mix of industry clusters, where we cultivate a resilient economy, and where we invest in our people and our communities to build a stronger Pennsylvania that works for all the residents, workers, businesses, and entrepreneurs that call our Commonwealth home.

Can apply for \$100k to 3 Million, Fee of \$100, Has to be LF eligible, Municipality can submit invoices for payment from the grants prior to paying the contractor.

Local Shared Account LSA Which falls under the DCED

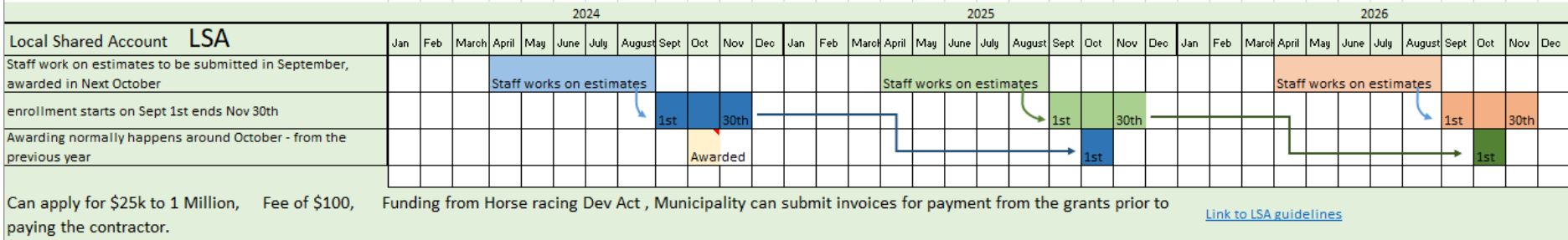
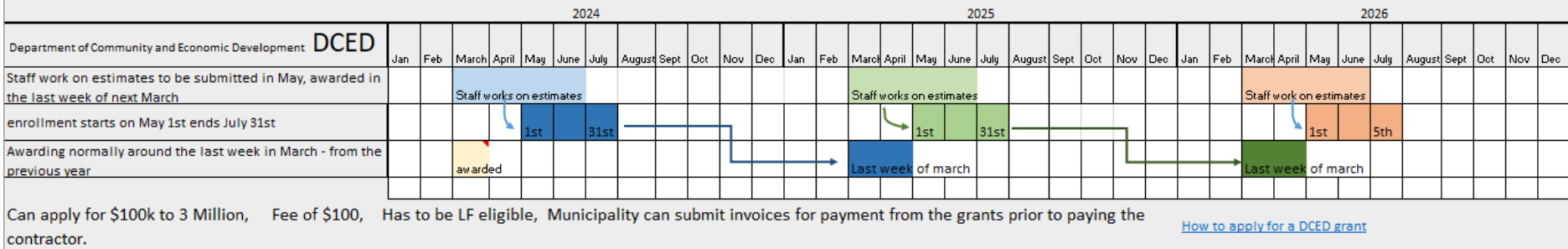
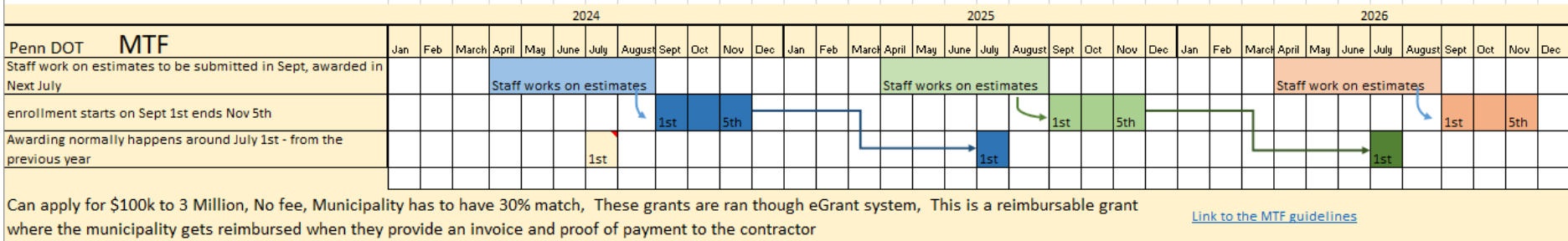
The PA Race Horse Development and Gaming Act (Act 2004-71), as amended, provides for the distribution of gaming revenues through the Commonwealth Financing Authority (CFA) to support projects in the public interest within the Commonwealth of Pennsylvania. Applications accepted annually between Sept 1st to Nov 5th.

Can apply for \$25k to 1 Million, Fee of \$100, Funding from Horse racing Dev Act , Municipality can submit invoices for payment from the grants prior to paying the contractor.



GRANT OPPORTUNITIES

Grant calendar



BEST PRACTICES

Best Practices for issues/concerns that other's may be dealing with.

- When a contractors on site whether it's a LF project or a grant situation, be out with them, be available by phone to answer questions.
- Buying materials use LF funds when your sure its eligible
- Penn DOT Pub 213 traffic control – our guide to safe traffic control.
- LTAP courses are a great tool
- Questions we can't get you an answer on or still confused on
 - Call PSATS they are very helpful
- Grants – encourage the practice applying for grants in Phases.
 - The west side needed to be completed 1st
 - The east side was awarded – had they mentioned Phases it probably would have been different



TOPICS

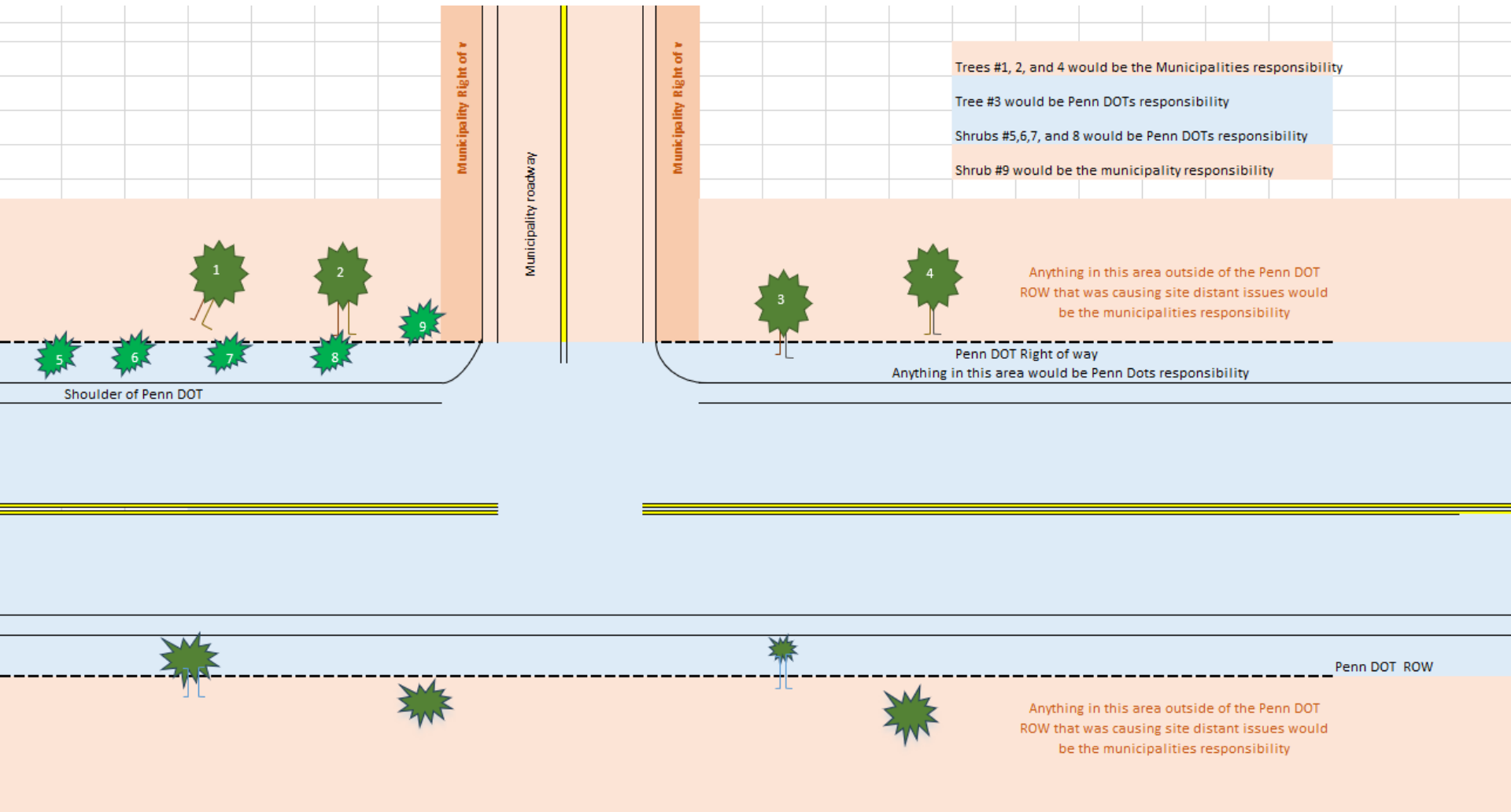
Current Hot topics

- Posting and bonding
- Grant opportunities
- Projects - LF and Grants
- Dirt and Gravel road eligible (Training required) if your looking for them to fund projects
- New roads eligible LF roads reach out to your M.S. rep by Sept 1st
- Developments new roads - address issues while in development status, the earlier the issues are identified the easier the issues are to get over.
- New **FHWA form 536** Local Highway Finance Report Due June 15th
 - Online submission or you can email the Excel version
 - Email will be sent to the main contact for each municipality on file at DCED
 - Revenues earned
 - All expenditures
 - Amount of debt
- Site distance at an Intersection of a Municipal road from a Penn DOT road, who is responsible for what.



SITE DISTANCE

Example of an Intersection of a Municipal road to a PennDOT road



MUNICIPAL SERVICES CONTACTS

District 10 Municipal services contacts

- **Cory Shaffer – Butler, and Western Armstrong Co**
corshaffer@pa.gov
- **James Breggenti - Eastern Armstrong and Indiana County**
jbreggenti@pa.gov
- **Marc Skarbek - Jefferson and Clarion County**
mskarbek@pa.gov

Municipal Services Supervisor - Steven Vasbinder
svasbinder@pa.gov 724-970-4413



RESOURCES



Pennsylvania
Department of Transportation

DISTRICT 10 WEB RESOURCES

- New website for Commonwealth agencies
 - [District 10 | Department of Transportation | Commonwealth of Pennsylvania](https://www.pa.gov/agencies/pennDOT/regional-offices/district-10.html)
(<https://www.pa.gov/agencies/pennDOT/regional-offices/district-10.html>)
- Outreach documents will be posted under the District 10 Outreach link
 - Doing Business with PennDOT Resource Guide
 - Spring Outreach Meeting presentations & maps

ARMSTRONG • BUTLER • CLARION • INDIANA • JEFFERSON

Engineering District 10

PennDOT's Engineering District 10 is responsible for the state-maintained transportation network across Armstrong, Butler, Clarion, Indiana, and Jefferson Counties. This includes 3,180 total road miles and 1,630 total bridges.

We also work with local governments, elected officials, stakeholders and the public on keeping people and goods moving safely and efficiently in this region.

[View District 10 Contacts](#)

[View District 10 Projects](#)



Pennsylvania
Department of
Transportation

Search

About PennDOT >

News & Media >

Traveling in PA >

Projects Near You >

Regional Offices ▾

- District 1 >
- District 2 >
- District 3 >
- District 4 >
- District 5 >
- District 6 >
- District 8 >
- District 9 >
- District 10 ▾**
- Maintenance and Traffic
Bulletins
- District 10 Outreach**

Search

Results 1-10 of 554

Sort & Filter

PennDOT Reduces Speed Limit to 55 mph on I-80 in Clarion and Jefferson Counties
January 28, 2025

Clarion County Jefferson County District 10
Department of Transportation

PennDOT Extends the Length of the Speed Limit Restrictions on I-80 in Clarion and Jefferson Counties
January 16, 2025

Clarion County Jefferson County District 10
Department of Transportation

PennDOT Reduces Speed Limit to 45 mph on I-80 in Clarion and Jefferson Counties
January 16, 2025

Clarion County Jefferson County District 10
Department of Transportation

Clarion River Bridge Rehabilitation Prince Weather Dependent Lane

PennDOT District 10

2550 Oakland Avenue
Indiana, PA 15701 3388

Phone: 724 357 2800
Fax: 724 357 2084
Press Office: 724 357 2829

Business Hours: 8:00 a.m. -
4:30 p.m. Monday - Friday

[All District 10 Contacts](#)

[Join PennDOT Pittsburgh on Facebook](#)

[Follow STIPA Pittsburgh on X](#)

Subscribe to District 10 News

Enter your email to receive PennDOT updates on District 10

Input Text

Public Resources



CONNECT WITH DISTRICT 10

Website:

[District 10 | Department of Transportation | Commonwealth of Pennsylvania](https://www.pa.gov/agencies/penndot/regional-offices/district-10.html)
(<https://www.pa.gov/agencies/penndot/regional-offices/district-10.html>)

Subscribe to District 10 news:

To receive emails when a press release is posted to the website, enter your email address into the "Subscribe to District 10 News" box on our District 10 home page.

Join our Groups on Facebook:

[Pittsburgh PennDOT](#)
[Northwest PennDOT](#)

X (Twitter):

[@511PA Erie](#)
[@511PA Pittsburgh](#)

District 10 contacts

District Executive, Brian Allen - 724-357-2806

Assistant District Executive - Construction, Paul Koza, Jr. - 724-357-2812

Assistant District Executive - Design, Alice Hammond - 724-357-2805

Assistant District Executive - Maintenance, Matthew Burkett - 724-357-2809

Community Relations Coordinator, Tina Gibbs - 724-357-2829

District Office (10-0)

2550 Oakland Avenue
Indiana, PA 15701
724-357-2800

*Standard hours of operation
are 8:00 AM to 4:30 PM*

