

JEFFERSON COUNTY

2025 DISTRICT 10 SPRING OUTREACH MEETING



Pennsylvania
Department of Transportation

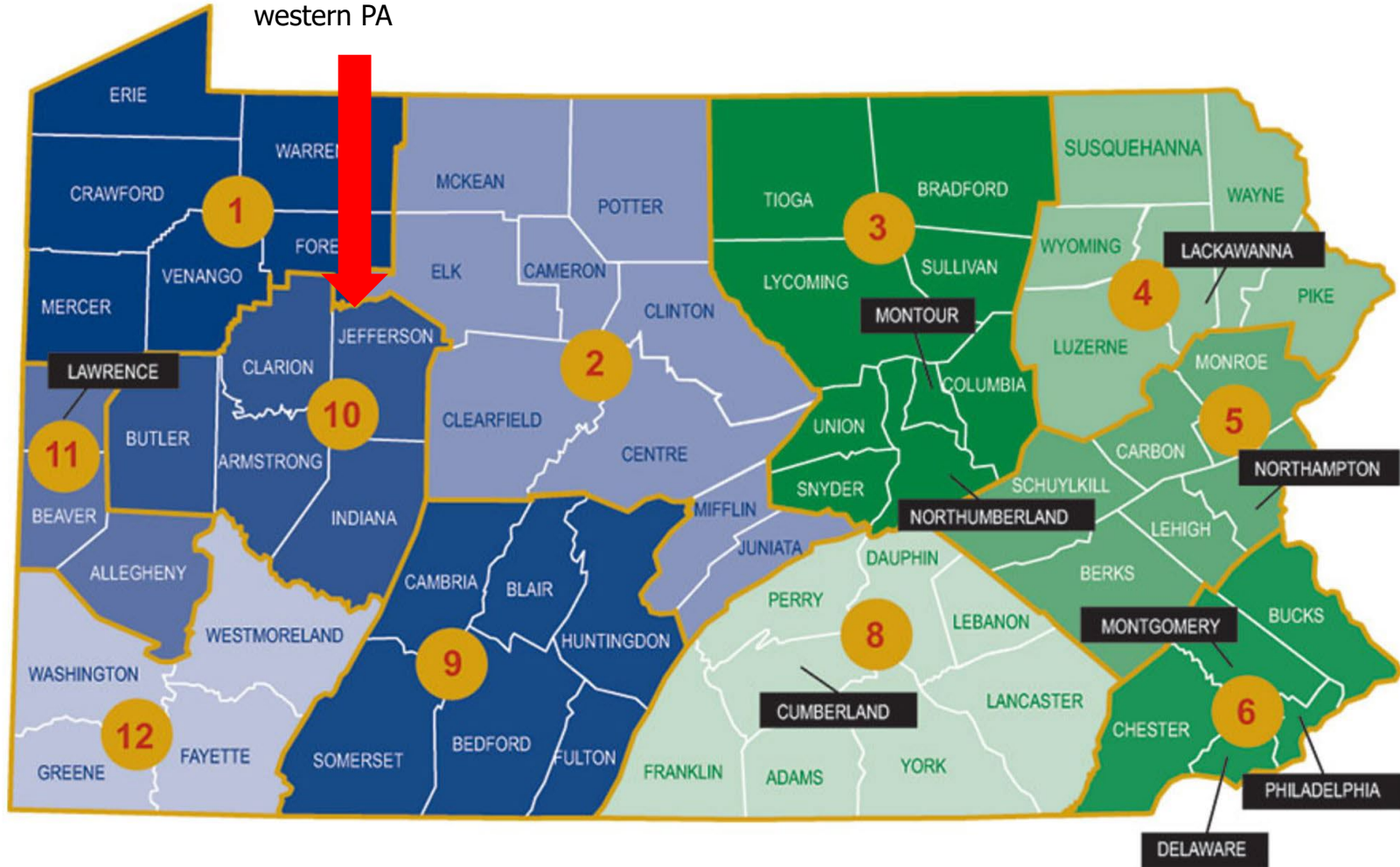
INTRODUCTIONS

- **BRIAN ALLEN, DISTRICT EXECUTIVE**
- **PAUL KOZA, ASSISTANT DISTRICT EXECUTIVE - CONSTRUCTION**
 - **PROJECTS IN CONSTRUCTION**
- **ALICE HAMMOND, ASSISTANT DISTRICT EXECUTIVE - DESIGN**
 - **PROJECTS IN DESIGN**
- **MATT BURKETT, ASSISTANT DISTRICT EXECUTIVE - MAINTENANCE**
- **MATT GASTON, JEFFERSON COUNTY MAINTENANCE MANAGER**
 - **COUNTY MAINTENANCE OVERVIEW**
- **STEVE VASBINDER, MUNICIPAL SERVICES SUPERVISOR**
- **TINA GIBBS, DISTRICT COMMUNITY RELATIONS COORDINATOR**
 - **WEBSITE RESOURCES & SOCIAL MEDIA**



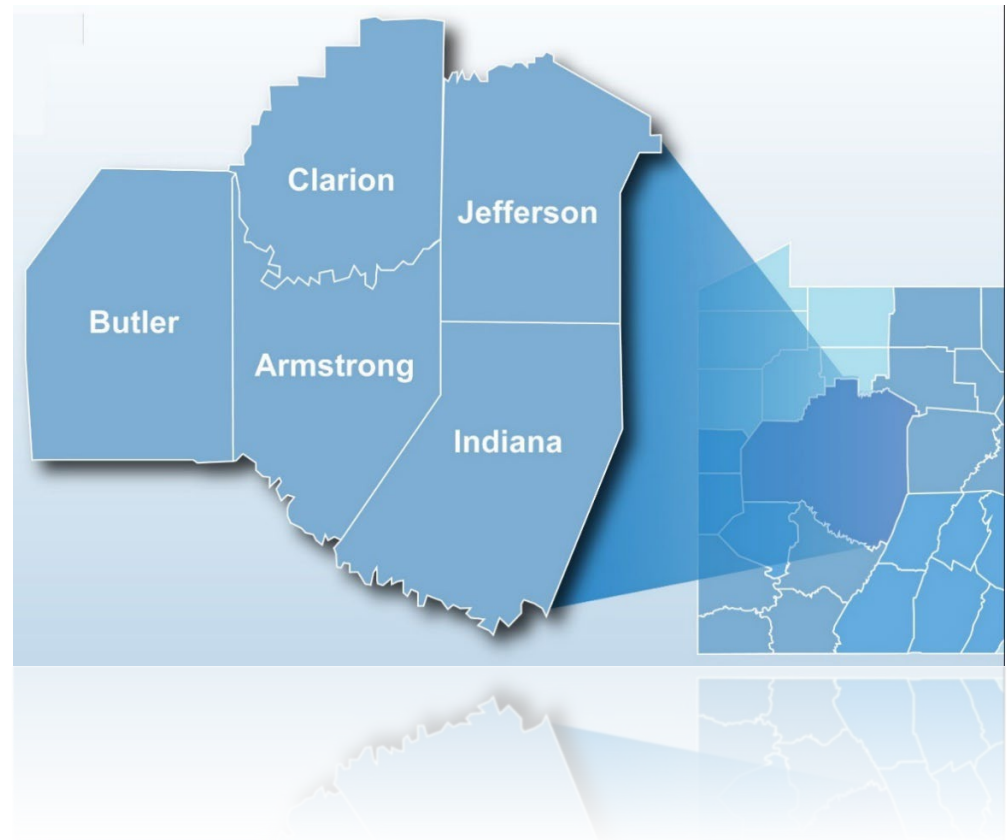
WHERE IS DISTRICT 10?

District 10 consists of Armstrong, Butler, Clarion, Indiana & Jefferson Counties in western PA



DISTRICT 10 OVERVIEW

- 5 counties
- 800 employees
- 1,630 bridges
- 7,107 lane miles
- 6,998 snow lane miles
- The 2025 construction & maintenance season in District 10 includes:
 - 40 construction projects
 - 195 miles of paving
 - 434 miles of seal coating
 - nearly 1,300 miles of shoulder cutting



CONSTRUCTION



Pennsylvania
Department of Transportation

MOORE BRIDGE

- Route 4006
- Warsaw Township
- Cost: \$1,308,308
- Anticipated Completion:
8/29/2025
- Prime contractor:
Francis J. Palo
- Bridge replacement
- Detour: 73 days



ROUTE 3003 OVER REDBANK CREEK

- Route 3003
- Clover Township
- Cost: \$4,746,064
- Anticipated Completion: 9/22/2025
- Prime Contractor: Beech Construction
- Bridge replacement
- Detour 371 days



ROUTE 36/ROUTE 949 CRASH AVOIDANCE SYSTEM

- Route 36/Route 949
- Eldred Township
- Cost: \$158,125
- Anticipated Completion: 5/25/2025
- Prime Contractor: M&B Services
- Safety improvement
 - Signal upgrade & flashing signs for approaching roads



UGLY RUN BRIDGE

- Route 2001
- Gaskill Township
- Cost: \$636,600
- Anticipated Completion: 10/3/2025
- Prime Contractor: Kukurin Contracting
- Bridge replacement
- Detour: 43 days



STUMP CREEK BRIDGE #3

- Route 2012
- Henderson Township
- Cost: \$1,386,386
- Anticipated Completion: 11/6/2025
- Prime Contractor: Glenn O. Hawbaker
- Bridge replacement
- Detour: 6/9/2025 - 9/22/25



ROUTE 28 CLARION LINE-SNYDER

- Route 28
- Clover & Rose townships
- Cost: \$4,312,312
- Anticipated Completion:
11/7/2025
- Prime Contractor: Glenn
O. Hawbaker
- Resurfacing 8 miles
- Duration 143 days



COUNTY GUIDERAIL

- County wide projects
- Multi-year contract
- Various routes
- Estimate <\$1 M
- Contractor: Penn Line Service
- Repair & replacement of guiderail



ROUTE 322 REYNOLDSVILLE TO CLEARFIELD LINE

- Route 322
- Winslow Township & Reynoldsville Borough
- Cost: \$2,632,322
- Anticipated Completion: 10/31/25
- Prime Contractor: Glenn O. Hawbaker
- Resurfacing project
 - 5.5 miles



2025 DISTRICT 10 RPM

- District wide
- Cost: < \$500,000
- Let Date: 4/17/2025
- Raised pavement marker (RPM) replacements



2025 DISTRICT 10 SMALL PAINT

- District wide
- Cost: < \$1 million
- Let Date: 5/8/2025
- Paint legend replacement



DESIGN



Pennsylvania
Department of Transportation

Roadway Projects



HIGH FRICTION SURFACE TREATMENT



- Various state routes
- Safety improvement
- Various municipalities
- Construction in 2026
- Construction Estimate: \$500,000 – 1 million



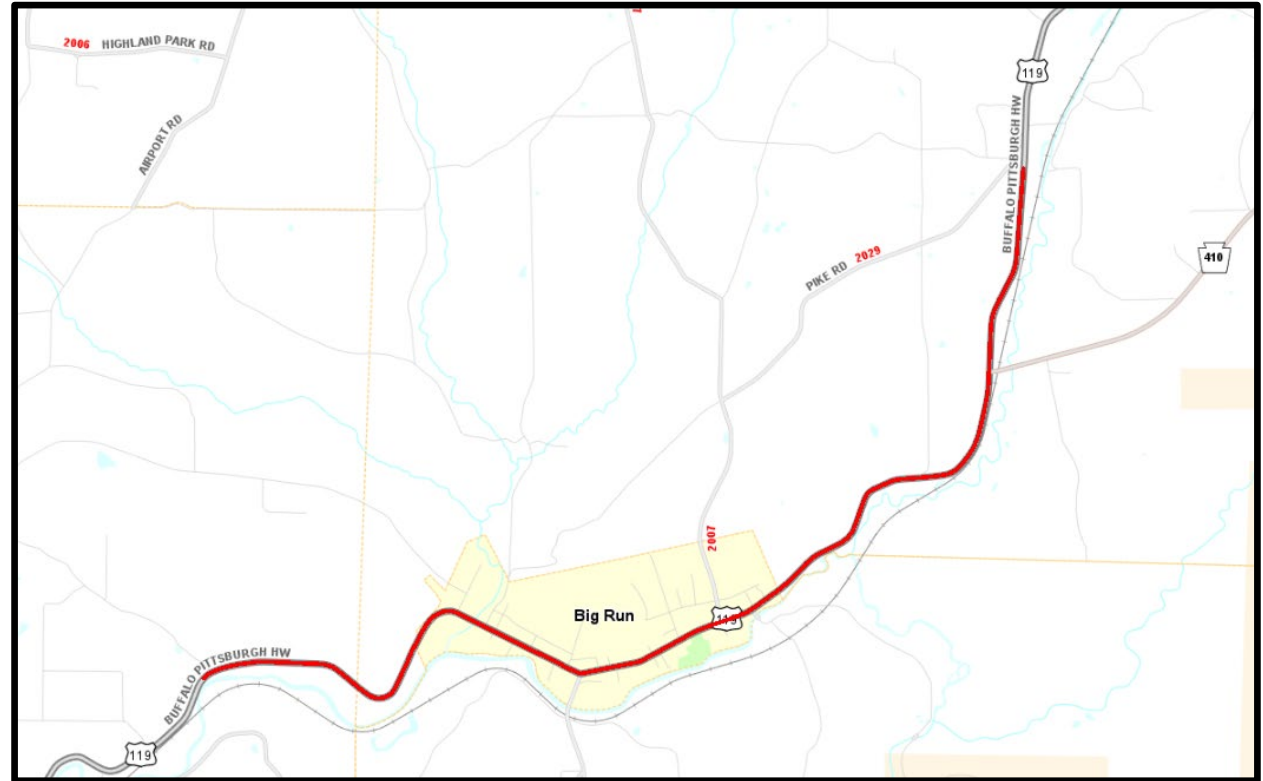
US 119 STUMP CREEK NORTH RESURFACING

- US 119
- Preventative Maintenance
- Sykesville Borough & Henderson & Winslow townships
- Construction in 2028
- Construction Estimate: \$2.5 – 5 million



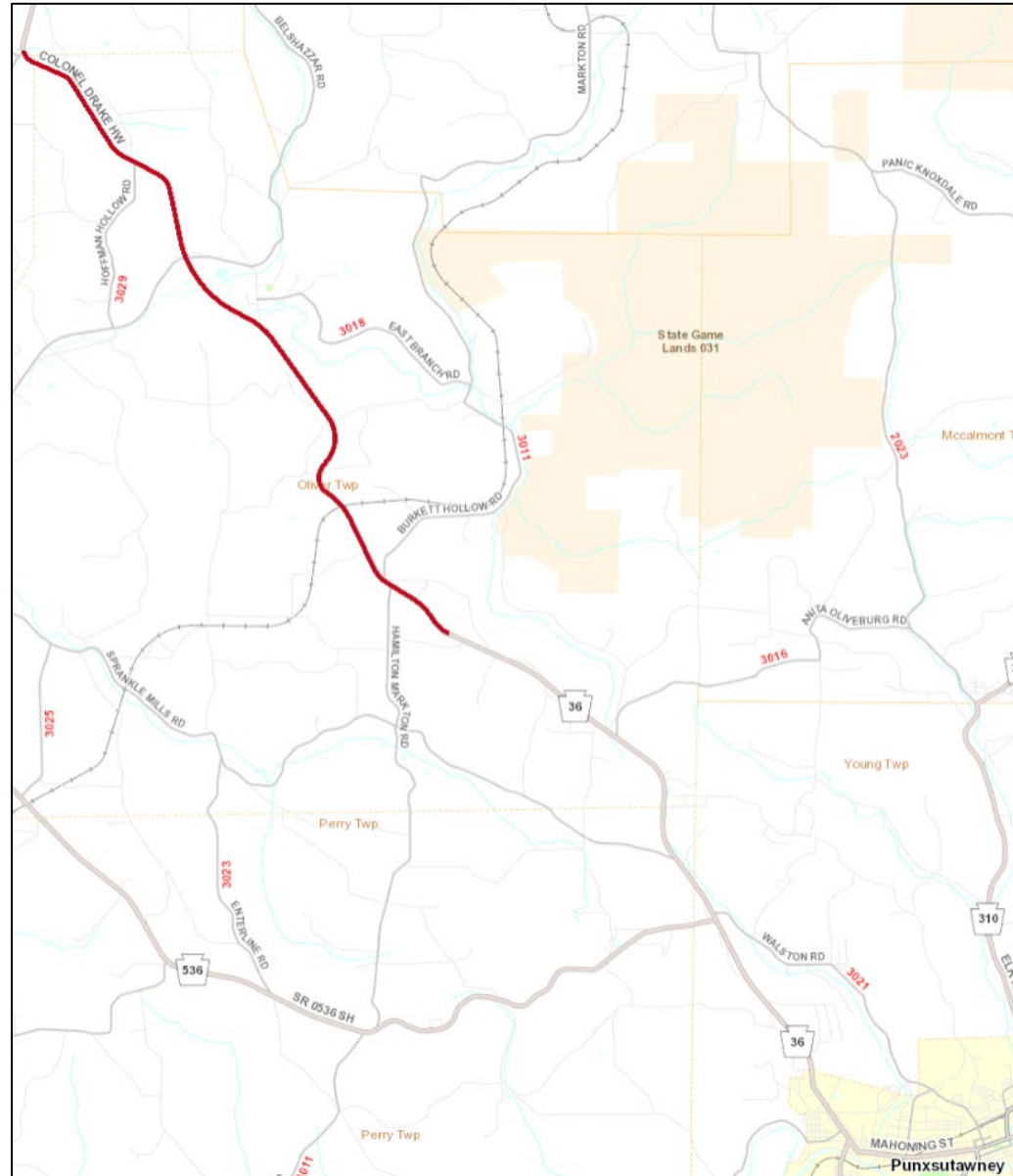
US 119 BIG RUN RESURFACING

- US 119
- Preventative maintenance
- Bell & Henderson townships & Big Run Borough
- Construction in 2028
- Construction Estimate: \$2.5 – 5 million



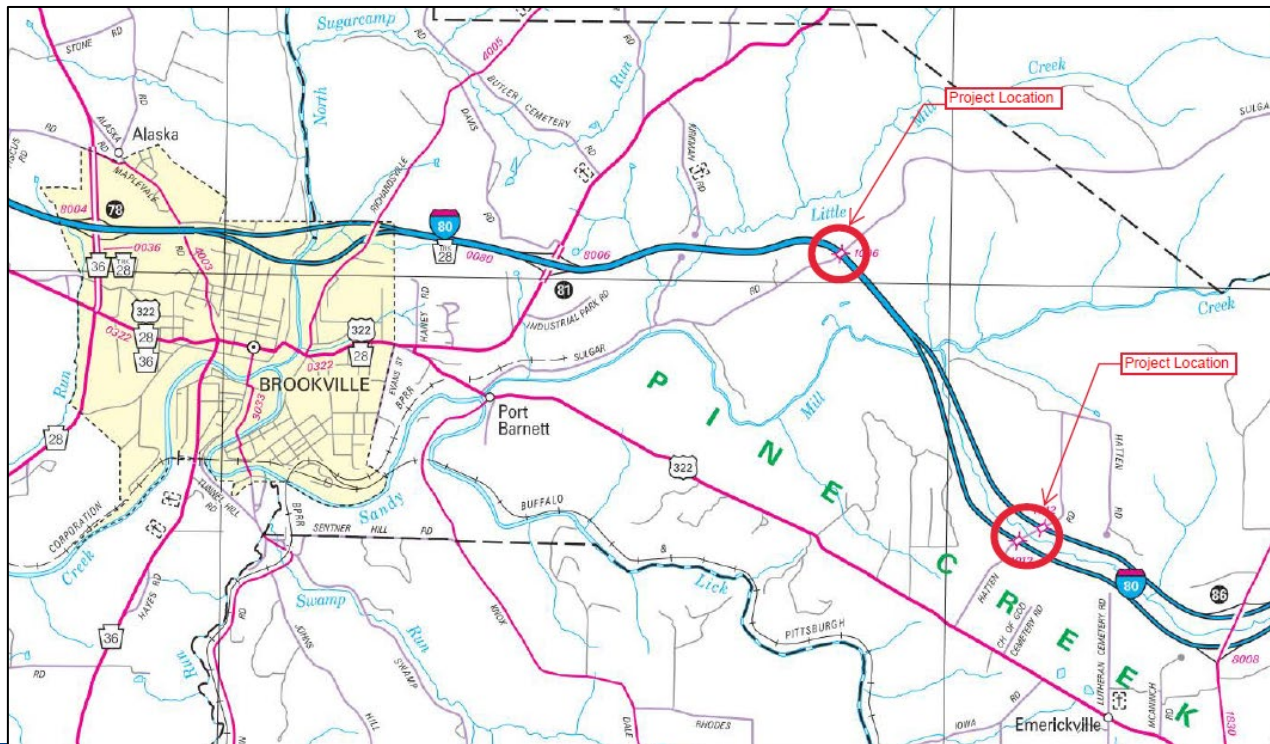
ROUTE 36 COOL SPRING SOUTH RESURFACING

- Route 36
- Preventative maintenance
- Oliver, Beaver, & Rose townships
- Construction: TBD
- Construction Estimate: \$2.5 – 5 million



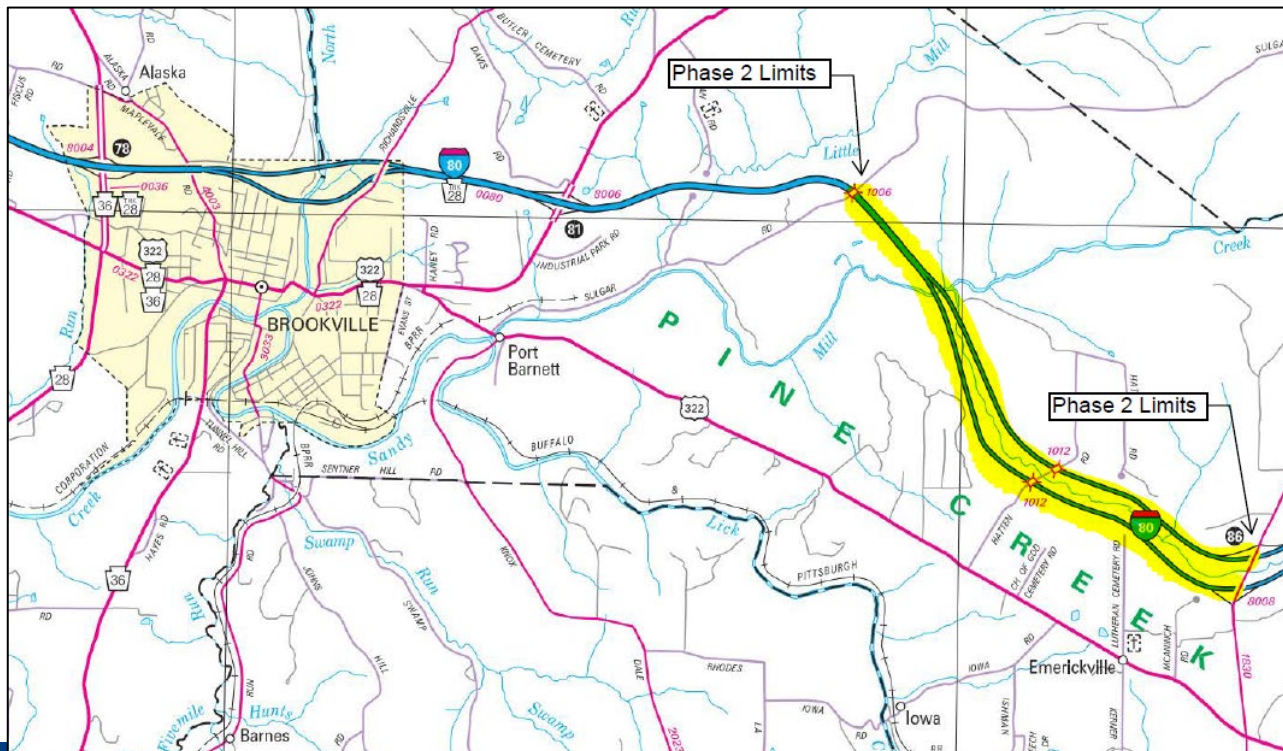
I-80 BROOKVILLE EAST PHASE 1

- I-80
- Bridge replacement & roadway reconstruction project
- Pine Creek Township
- Construction in 2027
- Construction Estimate: \$60 – 70 million



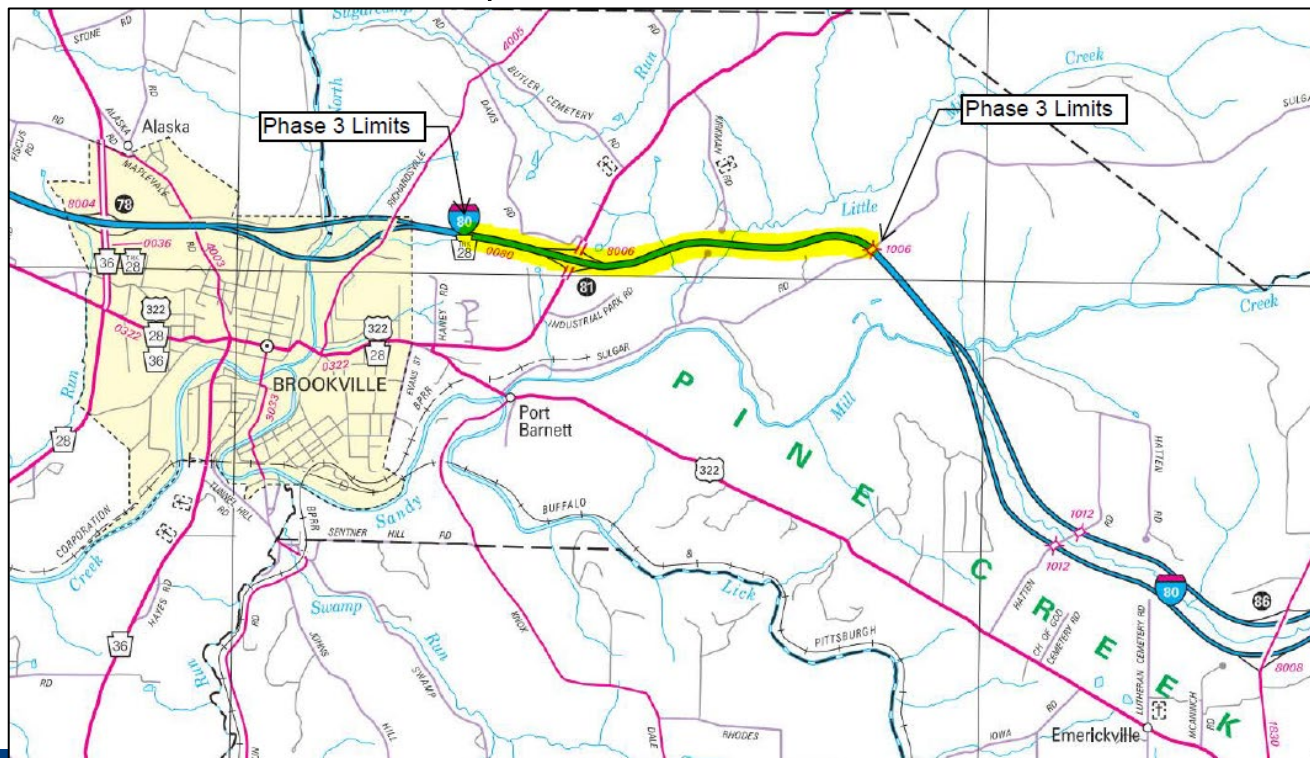
I-80 BROOKVILLE EAST PHASE 2

- I-80
- Bridge replacement & roadway reconstruction project
- Pine Creek Township
- Construction: TBD
- Construction Estimate: \$200 – 225 million



I-80 BROOKVILLE EAST PHASE 3

- I-80
- Bridge replacement & roadway reconstruction project
- Pine Creek Township
- Construction: TBD
- Construction Estimate: \$150 – 175 million



I-80 BROOKVILLE WEST RECONSTRUCTION

- I-80
- Roadway reconstruction project
- Brookville Borough, Rose & Union townships
- Construction: TBD
- Construction Cost: \$100 – 150 million



Bridge Projects

T-353 MILL RUN BRIDGE

- T-353 Bottom Road
- Bridge replacement
- Eldred Township
- Construction in 2026
- Construction Estimate:
\$1 - 2.5 million



T-517 KRAMER ROAD BRIDGE

- T-517 Kramer Road
- Superstructure & deck replacement
- McCalmont Township
- Construction in 2026
- Construction Estimate: \$1 - 2.5 million



GLEN-GERY GROUP BRIDGES

- Route 28
- Bridge Replacement – tributary to Redbank Creek
- Summerville Borough
- Construction in 2027
- Construction Estimate: \$1 - 2.5 million



GLEN-GERY GROUP BRIDGES

- Route 28
- Bridge replacement – Runaway Run
- Summerville Borough
- Construction in 2027
- Construction Estimate: \$1 - 2.5 million



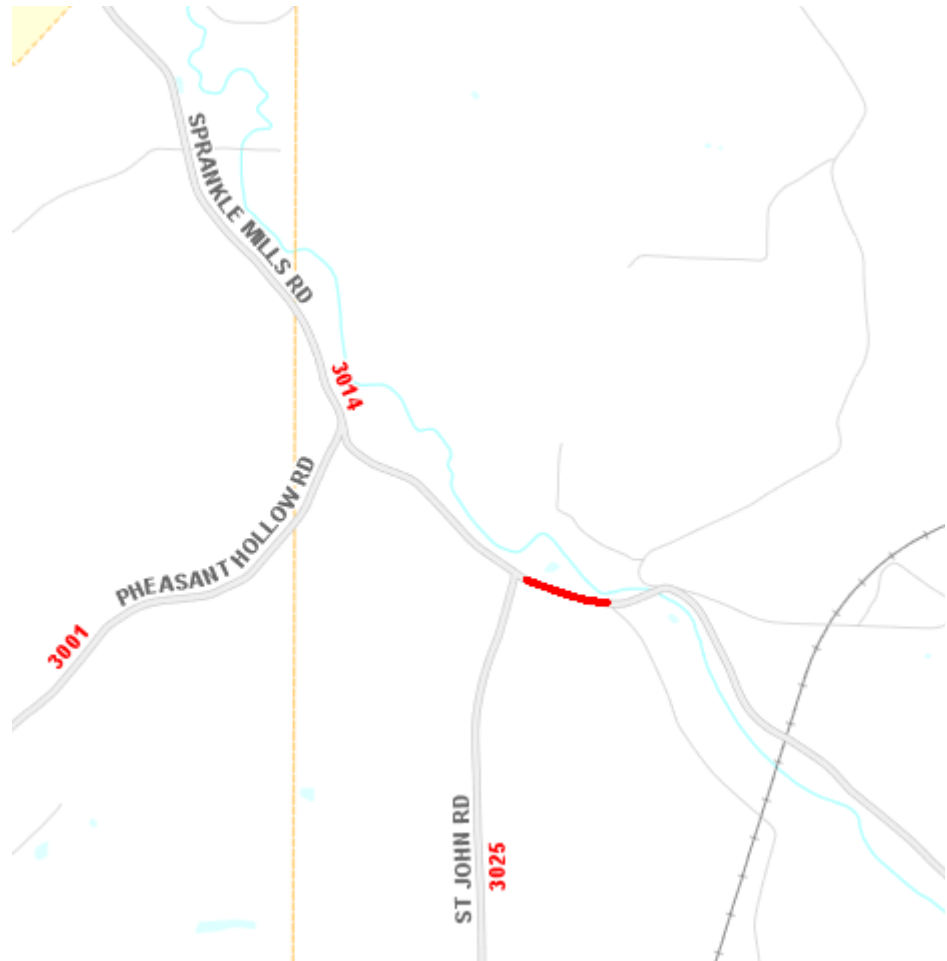
SOLDIER BRIDGE

- Route 2031
- Bridge replacement
- Clarion & Paint townships
- Construction in 2027
- Construction Estimate: \$1 - 2.5 million



ROUTE 3014 SPRANKLE MILLS #2

- Route 3014
- Bridge replacement
- Oliver Township
- Construction in 2027
- Construction Estimate:
\$200,000 - \$500,000



T-385 DOBSON ROAD BRIDGE

- T-385 Dobson Road
- Local bridge removal
- Ringgold Township
- Construction in 2027
- Construction Estimate:
\$200,000 - \$500,000



T-396 SELDOM SEEN BRIDGE

- T-396 Seldom Seen Road
- Local bridge removal
- Rose Township
- Construction in 2027
- Construction Estimate:
\$200,000 - \$500,000



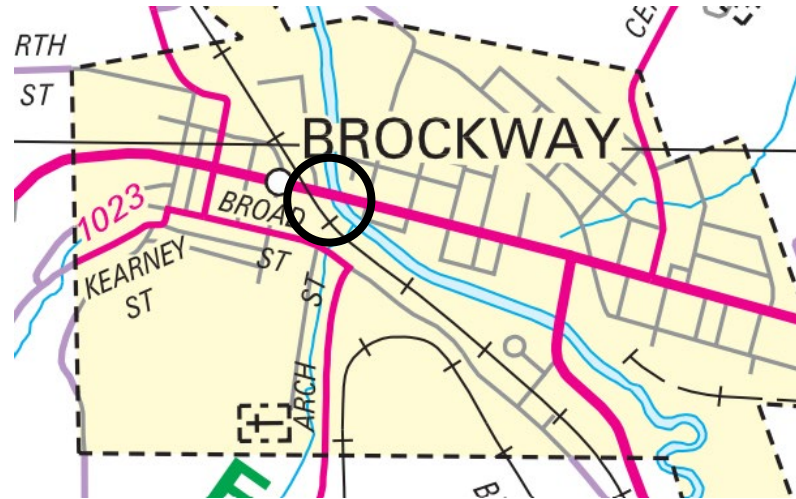
US 322 OVER CAMPBELL RUN

- US 322
- Bridge replacement
- Rose Township
- Construction in 2027
- Construction Estimate:
\$1 - 2.5 million



JEFFERSON BRIDGE LATEX GROUP

- Routes 28 & 36
- Bridge preservation
- Brockway & Brookville boroughs
- Construction in 2027
- Construction Estimate:
\$1 - 2.5 million



REYNOLDSVILLE BRIDGE #1 TICKLE BELLY

- US 322
- Bridge replacement
- Reynoldsville Borough
- Construction in 2028
- Construction Estimate:
\$2.5 – 5 million



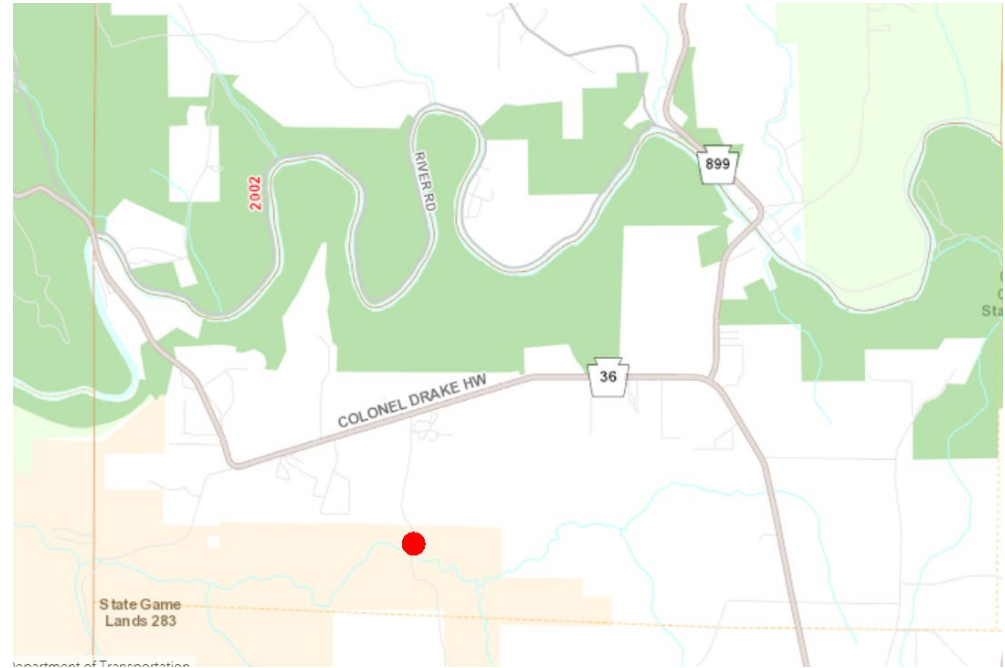
NEAR COOLSPRING BRIDGE

- Route 3031
- Bridge replacement
- Oliver Township
- Construction in 2028
- Construction Estimate:
\$1 - 2.5 million



T-346 HOMINY BRIDGE

- Route 7201
- Local bridge replacement
- Barnett Township
- Construction: TBD
- Construction Estimate:
\$1 - 2.5 million



SPRANKLE MILLS BRIDGE NO.1

- Route 3014
- Bridge replacement
- Rose Township
- Construction: TBD
- Construction Estimate:
\$1.5 - 2.5 million



JEFFERSON COUNTY MAINTENANCE



Pennsylvania
Department of Transportation

STAFF INTRODUCTION

Matthew Gaston - County Maintenance Manager

Jeremy Snyder - Assistant Highway Maintenance Manager

North Section - Brockway, Brookville, Emerickville

Brandon Stoneberg - Acting Assistant Highway Maintenance Manager

South Section - Ringgold, Punxsutawney

Byron Selfridge - County Equipment Manager

Amber Lowmaster - Roadway Programs Coordinator

(814) 938-6300



24-25 WINTER RECAP

SALT:

- 24-25 WINTER: 12,672 TONS @ 78.68= \$997,033
- 23-24 WINTER: 5,470 TONS @ \$74.23= \$406,038

ANTI-SKID:

- 24-25 WINTER: 12,595 @ \$31.26= \$393,720
- 23-24 WINTER: 3,932 TONS @ \$31.26= \$122,914

MAN HOURS (OVERTIME)

- 24-25 WINTER 6,603 MAN HOURS
- 23-24 WINTER: 3,600 MAN HOURS



JEFFERSON COUNTY SECTIONS

Section 1 –Blue

Activities being performed this summer: asphalt paving, general maintenance activities, shoulder backup, shoulder cutting, mowing.

Section 2 - Yellow

Activities being performed this summer: asphalt paving, pipe replacement, general maintenance activities, brushing, pipe flushing, mowing.

Section 3 – Green

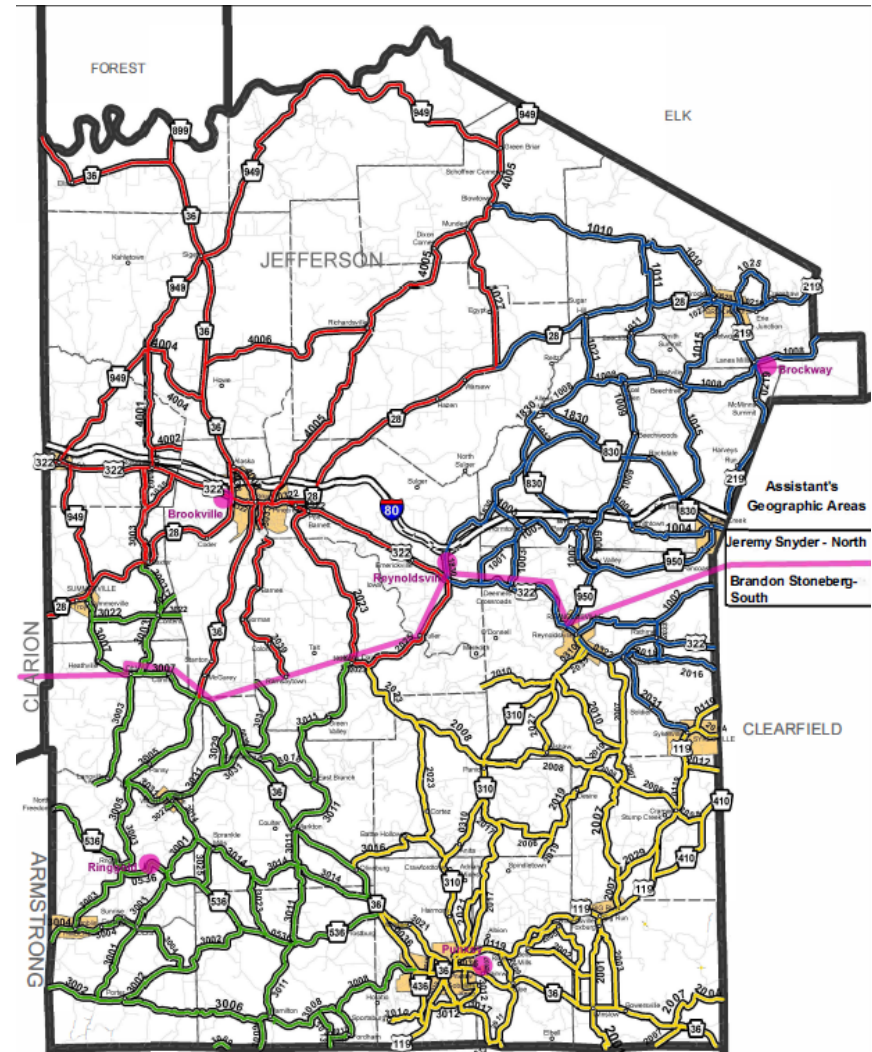
Activities being performed this summer: general maintenance activities, mowing, crack sealing, patching & pipe flushing.

Section 4 - Red

Activities being performed: general maintenance, shoulder cutting, mowing, crack sealing & patching.

Assistant Managers:

North - Jeremy Snyder
South - Brandon Stoneberg



PIPE REPLACEMENT

Planned for 2025: 3,700 feet
Completed in 2024: 3,320 feet



DITCH CLEANING

Planned for 2025: 25,780 feet
Completed in 2024: 25,080 feet



BASE REPAIR & PATCHING

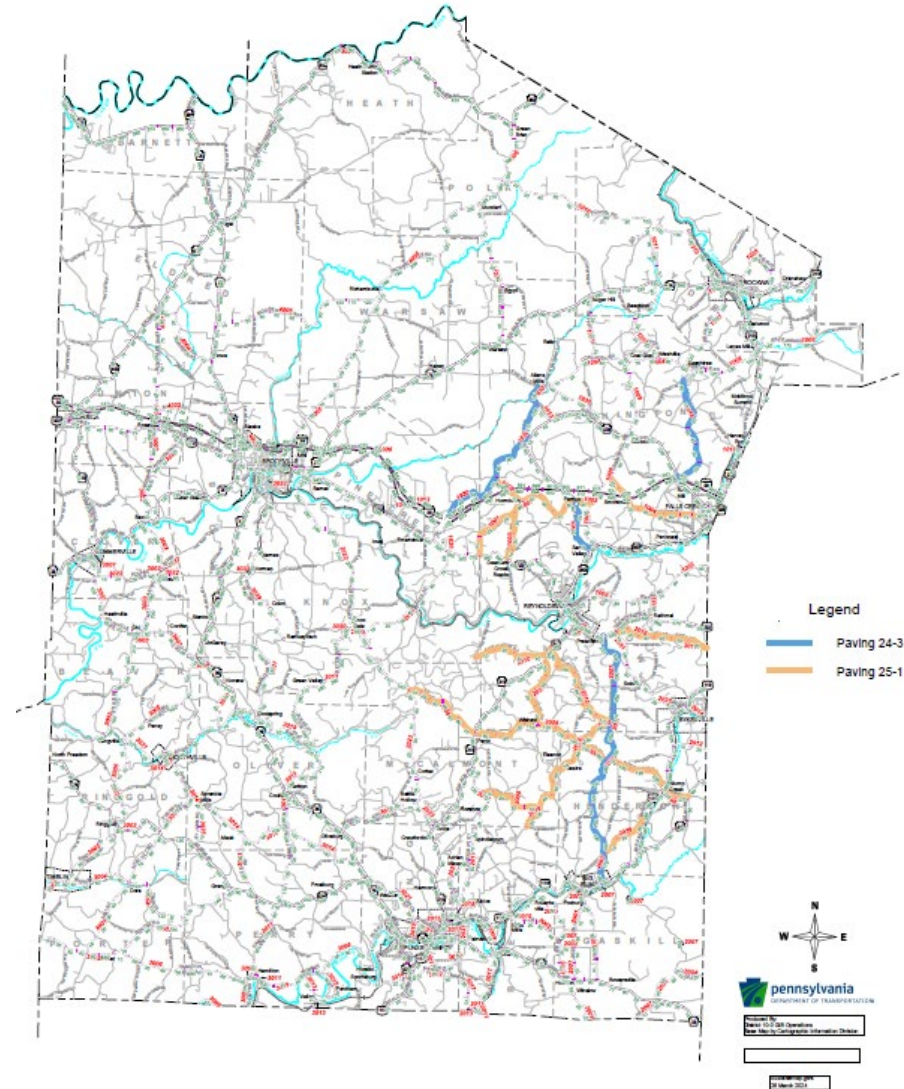
Planned for 2025: 400 tons
Completed in 2024: 1,253 tons



ASPHALT PAVING

Jefferson County Paving 2025

Planned for 2025: 59,725 tons
Completed in 2024: 12,145 tons



SHOULDER CUTTING & GRADING

Planned for 2025: 88 miles Interstate 80
Completed in 2024: 270 miles




CRACK SEALING

Planned for 2025: 97 miles
Completed in 2024: 67 miles



HURDLES

- 
- **Budgets are not increasing.**
 - **Cost of everything is up (material, parts, fuel)**
 - **Employee recruitment/retention**
 - **Employee turnover/experience, retaining the employees we have**
 - **Inventory:**
 - **Increased wait times to replenish supplies**
 - **Equipment deliveries & parts shortages**



LONG-TERM PLAN/GOALS

- **Continue with CORE sectional cycle maintenance activities.**
 - **Shoulder cutting**
 - **Pipe replacement/drainage**
 - **Seal coat 5-year cycle**
 - **Brushing/mowing**
 - **Crack sealing**
- **5th year paving cycle**
 - **Offset with reduced mill & fill/base repair as needs decrease**
 - **Improves OPI**
 - **Improves IRI**
- **Equipment preservation**
 - **Repairs & maintenance costs continue to rise**
 - **Invest in our equipment with preservation in mind**



AGILITY

Agility is a tool to build relationships with local communities by sharing & exchanging services & resources.

Possible opportunities are available!

County contact: Matt Gaston: 814-938-6300

District contact: John Copeland: 814-352-3871



MUNICIPAL SERVICES



Pennsylvania
Department of Transportation

DISTRICT 10

Municipal services contacts

- **Cory Shaffer – Butler, and Western Armstrong Co**
corshaffer@pa.gov
- **James Breggenti - Eastern Armstrong and Indiana County**
jbreggenti@pa.gov
- **Marc Skarbek - Jefferson and Clarion County**
mskarbek@pa.gov

Municipal Services Supervisor - Steven Vasbinder
svasbinder@pa.gov

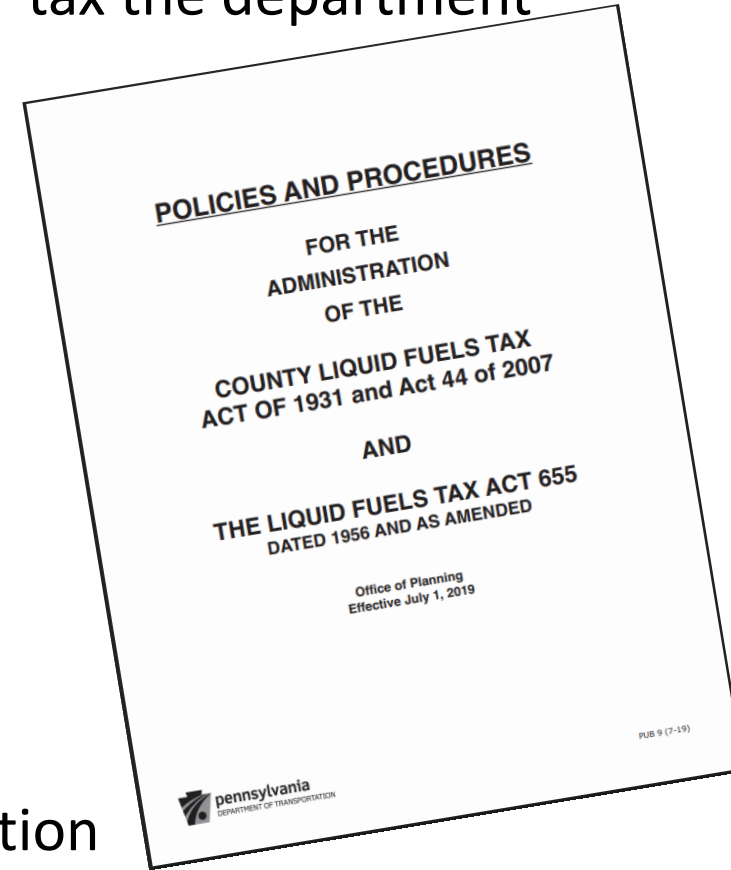


TOPICS

- Liquid Fuels info
 - Rates and what it covers
 - What qualifies as liquid fuels
- Agreements
 - Agility
 - Winter municipal (any rate adjustments)
 - Summer Comprehensive Maintenance Agreement
- Grant Opportunities
 - Types of grants they can apply for with application periods
 - Contacts
- What other municipalities are doing that are Best Practices for issues/concerns that other's may be dealing with.



The LF Rate depends upon the amount of LF tax the department receives.



How does the LF get calculated?

- Based 50% on Milage and 50% on population
 - 2024 the milage rate was \$3,188.01 / mile mild increase to \$3,191.02
 - 2024 \$17.97 / capita of population have not got a solid number for 2025

LIQUID FUELS

- General Rule of Thumb
 - May be used on construction, maintenance and repair of any road, street or bridge that the municipality is legally responsible for!
- All materials used must be PennDOT approved!
 - Form 4171 Certification of Materials is required for all materials received



LF PUB 9 34 ACCEPTABLE EXPENDITURES:

1. Construction, reconstruction, maintenance, and repair of public roads/ streets or bridges for which the county or municipality is legally responsible.
2. Costs of property damages resulting from road and/or bridge construction, reconstruction, or maintenance.
3. Purchase of right-of-way for road and/or bridge construction, reconstruction, or maintenance.
4. Compensation of viewers for services in eminent domain proceedings involving roads, highways, and bridges.
5. Interest and principal payments on road or bridge loans and bonds or sinking fund charges for such bonds becoming due within that current calendar year.
6. Any road or bridge work by order of the Public Utility Commission (PUC).
7. Culverts and drainage structures.
8. Acquisition, maintenance, repair, electrification, and operation of traffic signs and traffic signal control systems at intersections and/or railroad crossings.
9. Maintenance on alleys, ways, and courts in counties, townships, boroughs, and cities provided the county can demonstrate it has a legal responsibility for the alley, way, or court.
10. Street lighting in excess of taxes and bridge and interchange lighting.
11. Minor equipment, equipment rentals, or repair parts for road maintenance vehicles.
12. Road drags and snow fence.
13. Purchase of PennDOT-approved materials.
14. Major road and bridge equipment requiring cost quotes.
15. Salary and benefit costs of road crews or employees performing work on countyowned roads and bridges. The county must document these cost with daily time records (MS-907 or its equivalent), indicating type or location of work performed.
16. County Engineer's salary and benefit costs for road or bridge work.



PUB 9 ACCEPTABLE EXPENDITURES:

17. Debris removal from the roadway and its gutters and shoulders.
18. Erection of street name signs, traffic directing signs, and traffic signal control systems.
19. Brush removal to improve sight distance.
20. Lane and crosswalk painting and marking.
21. Cleaning of inlets and culverts.
22. Certain structures such as salt storage sheds or buildings built to house county or municipal owned road equipment.
23. Engineering fees (fees in excess of 10% of the total contract price must be documented and justified to the satisfaction of the District Municipal Services Office).
24. Curb ramps to provide access by individuals with disabilities in accordance with the current ADA and PennDOT standards.
25. Driveway grade adjustments due to construction or reconstruction.
26. Liability insurance for road and bridge equipment and vehicles when the named beneficiary is the entity's Liquid Fuels Tax Fund.
27. Administrative costs to a maximum of 10% of that year's total allocation, including benefits, overhead, and other administrative charges for county employees directly involved in activities covered by the Act.
28. Indirect engineering and transportation planning costs. Note: the total indirect cost that may be expended in any year from the County Liquid Fuels Tax Fund is limited to the 10% administrative allowance (see number 26 above). Direct engineering costs either contracted or in house are not included as either indirect or administrative costs. The reimbursement of prior year indirect costs is not permitted nor is any carryforward of eligibility authorized.
29. Ferry boat operations, where applicable.
30. Appraisal fees for infrastructure assets (as required by GASB 34).
31. Curbs that are part of the drainage system.
32. Payables for year-end county expenses (should be satisfied within 60 days of year-end).
33. Inspection costs associated with roadway and bridge structures such as signs, signals, culverts, drainage structures and bridges.
34. Gasoline with accompanying logs showing the vehicle and appropriate usage.



LF PUB 9 12 UNACCEPTABLE EXPENDITURES:

1. Parks, municipal buildings, or playgrounds.
2. Police departments, fire departments, or historic, charitable, or civic projects.
3. Private property drives.
4. Sidewalks not involved with road or bridge realignment projects.
5. Sanitary sewers, water lines, or utility costs.
6. Garbage or recycling pickup.
7. Construction projects without prior PennDOT approval.
8. Undocumented payroll expenditures.
9. Gasoline purchases for private vehicles.
10. Retroactive expenditures
11. Expenditures that do not comply with the Act or County Code.
12. Lump sum bidding unless specified under measurement and payment in PUB 408 and/or PUB 447.



LIQUID FUEL - PROJECT

1.7 PROCEDURE TO ESTABLISH A CONSTRUCTION/ RECONSTRUCTION AND/OR RESURFACING PROJECT

The following criteria is used to determine when Project Approval is required for work on county and local roads utilizing Liquid Fuels Tax funds, when construction, reconstruction, and/or resurfacing work exceeds one inch or more in depth, as well as other activities.

Criteria To Determine When Project Approval Is Required	
Bituminous surface	A depth of 1" or greater
Concrete surface	50 square yards or more
Widening	A new lane and/or more than two feet on either or both sides of existing roadway
Relocation	All
Bridges	For bridge maintenance/preservation activities, confer with the District Municipal Services Office to determine if a project approval is required. All rehabilitations, replacements or any other work that affects the carrying capacity of the structure or the waterway areas require project approval.
Other	Reconstruction, such as removal and replacement of one inch or more of existing road material, including base and surface. This includes cold-mill recycling and reclamation work.
Traffic signals and lighting	New installations
Guiderail	New installation location or replacement with upgrade or better technology.
Pipe	New installation location or replacement with a larger size.

Figure 1.a Criteria To Determine When Project Approval Is Required



LF QUALIFIERS - TWP FIRST CLASS

1. A copy of the ordinance, resolution or other official action showing that the municipality has adopted the street as a public highway, and a copy of a map showing the street location. (A Deed of Dedication must be on file with the municipality.)
2. In townships of the first class, the street must have a minimum right-of-way of at least 33 feet, with the exception of built-up areas where the right-of-way can be reduced to 24 feet.
3. The street must have a minimum cartway of 16 feet, paved or unpaved.
4. The street must be capable of being driven safely at 15 miles per hour.
5. A dead-end street must be at least 250 feet in length measured from the last intersection and provided with a cul-de-sac having a minimum radius of 40 feet.
6. The street must be accessible from an existing public street or roadway.

NOTE: In following these guidelines and submitting the necessary documents to the District Municipal Services Office before September 1 of each year, PennDOT will be able to process added mileages quickly.



LF QUALIFIERS TWP SECOND CLASS

1. A copy of the ordinance or resolution passed by the township to adopt the road as a public highway, and a copy of the plot plan showing the road location. (A Deed of Dedication must be on file with the municipality).
2. Proof that the ordinance or resolution has been recorded in the county courthouse (Clerk of Courts or appropriate county recording office) showing the court seal, page, and document number where recorded.
3. The road must have a minimum right-of-way of 33 feet.
4. The road must have a minimum cartway of 16 feet, paved or unpaved. (Necessary shoulder widths are excluded).
5. The road must be capable of being driven safely at 15 miles per hour.
6. All dead-end roads must be at least 250 feet in length measured from the last intersection and be provided with a cul-de-sac having a radius of at least 40 feet.
7. The roadway must be accessible from an existing public street or roadway.

NOTE: In following these guidelines and submitting the necessary documents to the District Municipal Services Office before September 1 of each year, PennDOT will be able to process added mileages quickly.



LF - CITIES, BOROUGHS AND TOWNS

1. A copy of the ordinance showing that the municipality has adopted the street as a public highway, and a copy of the borough or city map showing the street location. (A Deed of Dedication must be on file with the municipality.)
2. A copy of the ordinance must be on file in the municipality's ordinance book.
3. The street must have a minimum **right-of-way of at least 16 feet**.
4. The street must have a minimum cartway of at least 16 feet, paved or unpaved.
5. The street must be capable of being driven safely at 15 miles per hour.
6. A dead-end street must be at least 250 feet in length measured from the last intersection and provided with a cul-de-sac having a radius of at least 40 feet.
7. The street must be accessible from an existing public street or roadway.

NOTE: In following these guidelines and submitting the necessary documents to the Municipal Services District Office before September 1 of each year, PennDOT will be able to process added mileages quickly



AGREEMENTS AGILITY

- The Agility Program been around since 1996 to enable service-for-service exchanges with eligible Partners, such as municipal governments, state and federal agencies, public colleges and universities, school districts, councils of government, metropolitan and rural planning organizations, water, sewer, housing and other municipal authorities, charitable hospitals, volunteer fire and rescue companies, and volunteer emergency medical services companies.
- Agility enables PennDOT and its eligible Partners to exchange services, equipment, and staff without monetary payments. Agility helps PennDOT and its Partners make the most of limited resources, while developing strong and rewarding relationships.

Must be Dollar neutral, trading of services. Snow plowing, Tree cutting, mowing, brooming, training, special piece of equipment, brooming or flushing equip.

10-1 (2-22)

pennsylvania
Department of Transportation

AGILITY AGREEMENT

Agreement Number: _____
Federal ID Number: _____

Effective Date: (Department will insert)

AGILITY AGREEMENT
(Attachments A, B, C and D)

THIS AGREEMENT is made and entered into by and between the Commonwealth of Pennsylvania, acting through the Department of Transportation, ("DEPARTMENT") and the following public procurement unit(s) as defined in the Commonwealth Procurement Code, 62 Pa. C.S. § 101, et seq., ("PARTNER(S)"),

Partner: _____ Federal ID Number: _____
City: _____ County: _____

NOW, THEREFORE, in accordance with the Terms and Conditions of Attachment A, attached to and made a part of this Agreement, the parties, with the intention of being legally bound, agree to perform those activities defined in the Agility Work Plan which, upon completion by the parties, will be attached to and made a part of this Agreement.

Attachment B, which lists the services that may be performed by the parties, is made a part of this Agreement.

Modifications to the services to be performed as identified in the Agility Work Plan may be made at any time in writing during the term of this Agreement or the renewal period described in Paragraph 3.

This Agreement shall be effective for an initial five- (5-) year period, beginning on the date noted in the upper left-hand corner, unless terminated sooner for either cause or convenience upon thirty (30) days' written notice by either party to the other, at which time all obligations shall cease; provided, further, that termination for convenience shall be subject to reconciliation of outstanding balances.

By renewal letter, not requiring approval by either the Office of Chief Counsel or Office of Comptroller, the parties can extend the Agreement for one three- (3-) year term beyond the initial five- (5-) year term. The three- (3-) year renewal period shall begin on the termination date of the initial term. The three- (3-) year renewal period shall similarly be subject to termination for either cause or convenience upon thirty (30) days' written notice by either party to the other, at which time all obligations shall cease; and, as during the initial period, termination for convenience shall be subject to reconciliation of outstanding balances. The PARTNER shall return the letter, signed by its duly authorized agent and accompanied by a resolution authorizing the agent to sign on the PARTNER'S behalf, to the DEPARTMENT's appropriate county agility coordinator at least sixty (60) days before the end of the initial term. A sample renewal letter is attached to and made a part of this Agreement as Attachment C. In any event, this Agreement shall not be effective after eight (8) years from the date noted in the upper left-hand corner.

The Pennsylvania Right-to-Know Law, 65 P.S. §§ 67 101-3104, applies to this Agreement. Therefore, the Agreement is subject to, and the PARTNER shall comply with the clause entitled, "Contract Provisions - Right to Know Law," attached as Attachment D and made a part of this Agreement. As used in this Agreement, the term "Contractor" refers to the PARTNER.

1



MUNICIPAL AGREEMENTS

- **Winter municipal agreements**

- snow agreements between Municipality and the County – these are paid in dollars to the municipality
- \$1389 / mile to 1590 based on traffic
- Extreme winter adjustment determined by Harrisburg by County (any rate adjustments) early summer
- Rates typically 2% increase year to year

- **Summer Comprehensive Maintenance Agreements**

- These are Similar to Winter municipal or snow agreements between Municipality and the County – these are paid in dollars to the municipality
- Mowing, Tree trimming, sweeping, etc.



GRANT OPPORTUNITIES

Keystone log in at <https://grants.pa.gov/Login.aspx>

Penn DOT - Multimodal Transportation Fund

Applications accepted annually between Sept 1st to Nov 5th. All applications and all required supplemental information must be electronically submitted by close of business on July 31st for hopeful consideration at the November CFA board meeting.

Can apply for \$100k to 3 Million, No fee, Municipality must have 30% match. These grants are managed through eGrant system, This is a reimbursable grant where the municipality spends the money then gets reimbursed when they provide an invoice and proof of payment to the contractor

Department of Community and Economic Development

DCED same location as above or 1-866-466-3972

Applications accepted annually March 1 and July 31. Goal is to ensure Pennsylvania is a premier state to do business, where we adopt and innovate the next generation of breakthroughs in a diverse mix of industry clusters, where we cultivate a resilient economy, and where we invest in our people and our communities to build a stronger Pennsylvania that works for all the residents, workers, businesses, and entrepreneurs that call our Commonwealth home.

Can apply for \$100k to 3 Million, Fee of \$100, Has to be LF eligible, Municipality can submit invoices for payment from the grants prior to paying the contractor.

Local Shared Account LSA Which falls under the DCED

The PA Race Horse Development and Gaming Act (Act 2004-71), as amended, provides for the distribution of gaming revenues through the Commonwealth Financing Authority (CFA) to support projects in the public interest within the Commonwealth of Pennsylvania. Applications accepted annually between Sept 1st to Nov 5th.

Can apply for \$25k to 1 Million, Fee of \$100, Funding from Horse racing Dev Act , Municipality can submit invoices for payment from the grants prior to paying the contractor.



GRANT OPPORTUNITIES

Grant calendar

Penn DOT MTF																																						
2024													2025													2026												
Jan	Feb	March	April	May	June	July	August	Sept	Oct	Nov	Dec	Jan	Feb	March	April	May	June	July	August	Sept	Oct	Nov	Dec	Jan	Feb	March	April	May	June	July	August	Sept	Oct	Nov	Dec			
Staff work on estimates to be submitted in Sept, awarded in Next July																																						
enrollment starts on Sept 1st ends Nov 5th																																						
Awarding normally happens around July 1st - from the previous year																																						
Can apply for \$100k to 3 Million, No fee, Municipality has to have 30% match, These grants are ran though eGrant system, This is a reimbursable grant where the municipality gets reimbursed when they provide an invoice and proof of payment to the contractor																																						
Link to the MTF guidelines																																						
Department of Community and Economic Development DCED																																						
2024													2025													2026												
Jan	Feb	March	April	May	June	July	August	Sept	Oct	Nov	Dec	Jan	Feb	March	April	May	June	July	August	Sept	Oct	Nov	Dec	Jan	Feb	March	April	May	June	July	August	Sept	Oct	Nov	Dec			
Staff work on estimates to be submitted in May, awarded in the last week of next March																																						
enrollment starts on May 1st ends July 31st																																						
Awarding normally around the last week in March - from the previous year																																						
Can apply for \$100k to 3 Million, Fee of \$100, Has to be LF eligible, Municipality can submit invoices for payment from the grants prior to paying the contractor.																																						
How to apply for a DCED grant																																						
Local Shared Account LSA																																						
2024													2025													2026												
Jan	Feb	March	April	May	June	July	August	Sept	Oct	Nov	Dec	Jan	Feb	March	April	May	June	July	August	Sept	Oct	Nov	Dec	Jan	Feb	March	April	May	June	July	August	Sept	Oct	Nov	Dec			
Staff work on estimates to be submitted in September, awarded in Next October																																						
enrollment starts on Sept 1st ends Nov 30th																																						
Awarding normally happens around October - from the previous year																																						
Can apply for \$25k to 1 Million, Fee of \$100, Funding from Horse racing Dev Act , Municipality can submit invoices for payment from the grants prior to paying the contractor.																																						
Link to LSA guidelines																																						



BEST PRACTICES

Best Practices for issues/concerns that other's may be dealing with.

- When a contractors on site whether it's a LF project or a grant situation, be out with them, be available by phone to answer questions.
- Buying materials use LF funds when your sure its eligible
- Penn DOT Pub 213 traffic control – our guide to safe traffic control.
- LTAP courses are a great tool
- Questions we can't get you an answer on or still confused on
 - Call PSATS they are very helpful
- Grants – encourage the practice applying for grants in Phases.
 - The west side needed to be completed 1st
 - The east side was awarded – had they mentioned Phases it probably would have been different



TOPICS

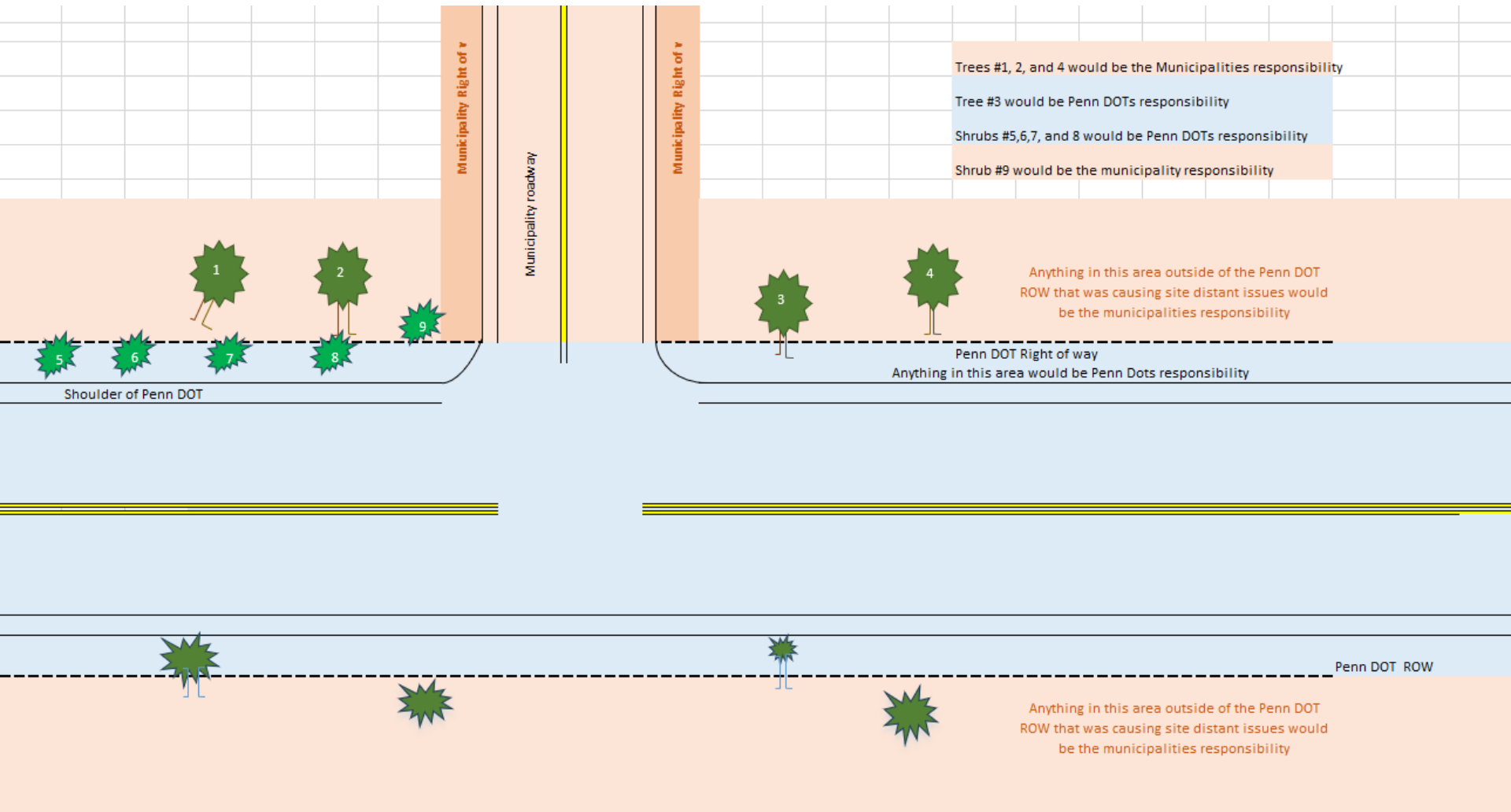
Current Hot topics

- Posting and bonding
- Grant opportunities
- Projects - LF and Grants
- Dirt and Gravel road eligible (Training required) if your looking for them to fund projects
- New roads eligible LF roads reach out to your M.S. rep by Sept 1st
- Developments new roads - address issues while in development status, the earlier the issues are identified the easier the issues are to get over.
- New **FHWA form 536** Local Highway Finance Report Due June 15th
 - Online submission or you can email the Excel version
 - Email will be sent to the main contact for each municipality on file at DCED
 - Revenues earned
 - All expenditures
 - Amount of debt
- Site distance at an Intersection of a Municipal road from a Penn DOT road, who is responsible for what.



SITE DISTANCE

Example of an Intersection of a Municipal road to a PennDOT road



MUNICIPAL SERVICES CONTACTS

District 10 Municipal services contacts

- **Cory Shaffer – Butler, and Western Armstrong Co**
corshaffer@pa.gov
- **James Breggenti - Eastern Armstrong and Indiana County**
jbreggenti@pa.gov
- **Marc Skarbek - Jefferson and Clarion County**
mskarbek@pa.gov

Municipal Services Supervisor - Steven Vasbinder
svasbinder@pa.gov 724-970-4413



RESOURCES



Pennsylvania
Department of Transportation

DISTRICT 10 WEB RESOURCES

- New website for Commonwealth agencies
 - [District 10 | Department of Transportation | Commonwealth of Pennsylvania](https://www.pa.gov/agencies/pennDOT/regional-offices/district-10.html)
(<https://www.pa.gov/agencies/pennDOT/regional-offices/district-10.html>)
- Outreach documents will be posted under the District 10 Outreach link
 - Doing Business with PennDOT Resource Guide
 - Spring Outreach Meeting presentations & maps

ARMSTRONG • BUTLER • CLARION • INDIANA • JEFFERSON

Engineering District 10

PennDOT's Engineering District 10 is responsible for the state-maintained transportation network across Armstrong, Butler, Clarion, Indiana, and Jefferson Counties. This includes 3,180 total road miles and 1,630 total bridges.

We also work with local governments, elected officials, stakeholders and the public on keeping people and goods moving safely and efficiently in this region.

[View District 10 Contacts](#)

[View District 10 Projects](#)



Pennsylvania Department of Transportation

Search

About PennDOT >

News & Media >

Traveling in PA >

Projects Near You >

Regional Offices

- District 1 >
- District 2 >
- District 3 >
- District 4 >
- District 5 >
- District 6 >
- District 8 >
- District 9 >
- District 10** v
- Maintenance and Traffic Bulletins
- District 10 Outreach**

Search

Results 1-10 of 554

Sort & Filter

PennDOT Reduces Speed Limit to 55 mph on I-80 in Clarion and Jefferson Counties

January 28, 2025

Clarion County Jefferson County District 10 Department of Transportation

PennDOT Extends the Length of the Speed Limit Restrictions on I-80 in Clarion and Jefferson Counties

January 16, 2025

Clarion County Jefferson County District 10 Department of Transportation

PennDOT Reduces Speed Limit to 45 mph on I-80 in Clarion and Jefferson Counties

January 16, 2025

Clarion County Jefferson County District 10 Department of Transportation

Clarion River Bridge Rehabilitation Prince Weather Dependent Lane

PennDOT District 10

2550 Oakland Avenue
Indiana, PA 15701 3388

Phone: 724 357 2800
Fax: 724 357 2084
Press Office: 724 357 2829

Business Hours: 8:00 a.m. - 4:30 p.m. Monday - Friday

[All District 10 Contacts](#)

[Join PennDOT Pittsburgh on Facebook](#)

[Follow STIPA Pittsburgh on X](#)

Subscribe to District 10 News

Enter your email to receive PennDOT updates on District 10

Input Text

Public Resources



CONNECT WITH DISTRICT 10

Website:

[District 10 | Department of Transportation | Commonwealth of Pennsylvania](https://www.pa.gov/agencies/penndot/regional-offices/district-10.html)
(<https://www.pa.gov/agencies/penndot/regional-offices/district-10.html>)

Subscribe to District 10 news:

To receive emails when a press release is posted to the website, enter your email address into the "Subscribe to District 10 News" box on our District 10 home page.

Join our Groups on Facebook:

[Pittsburgh PennDOT](#)
[Northwest PennDOT](#)

X (Twitter):

[@511PA Erie](#)
[@511PA Pittsburgh](#)

District 10 contacts

District Executive, Brian Allen - 724-357-2806

Assistant District Executive - Construction, Paul Koza, Jr. - 724-357-2812

Assistant District Executive - Design, Alice Hammond - 724-357-2805

Assistant District Executive - Maintenance, Matthew Burkett - 724-357-2809

Community Relations Coordinator, Tina Gibbs - 724-357-2829

District Office (10-0)

2550 Oakland Avenue
Indiana, PA 15701
724-357-2800

*Standard hours of operation
are 8:00 AM to 4:30 PM*

