



# Cambridge Springs Bridge Replacement Project

October 18, 2018



## Environmental Coordination

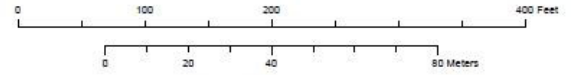
- **June 2015:** Last public meeting
- **April 2015:** U.S. Fish and Wildlife Service advised PennDOT to conduct a mussel habitat assessment and survey.
- **May 2015:** PennDOT conducted a mussel habitat survey. Findings indicated presence of 6 endangered species of mussels.

# Environmental Coordination



Figure 2. Distribution results from the Qualitative Mussel Survey Completed on French Creek under the Main Street Bridge in Cambridge Springs, PA.

— Diving Transect



Date: 7/27/2015 Path: C:\Users\Shawn.Gulley\Documents\GIS\MapDocs\MapDocs\CambridgeSprings\Cloud\_Maps

Basemap courtesy of Esri.

## Environmental Coordination

- **February 2016:** PennDOT submitted Biological Assessment to address the potential effects of the bridge replacement on mussel species.
- **September 2016:** Received Biological Opinion from Fish and Wildlife Service.
- A mussel relocation will be completed prior to the bridge removal.



## Historical Coordination

- **June 2016:** Bridge was determined to be eligible for historic status.
- **July 2017:** PennDOT prepared a bridge rehabilitation analysis to determine the feasibility of rehabilitating the bridge.
- **November 2017:** The Pennsylvania State Historic Preservation Office (SHPO) concurred bridge is not able to be rehabilitated to meet the project's Purpose and Need.



# Detour Route



## CAR/TRUCK AND PEDESTRIAN DETOUR PLAN

### LEGEND

- █ PEDESTRIAN DETOUR
- █ CAR/TRUCK DETOUR

CAR/TRUCK DETOUR DISTANCE = 0.70 MILES  
CURRENT DISTANCE = 0.45 MILES  
ADDED TRAVEL DISTANCE DUE TO DETOUR = 0.25 MILES

PEDESTRIAN DETOUR LENGTH = 1.1 MILES  
WALKING TIME = 22 MINUTES

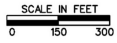
# Portage Route

- LEGEND**
- PROPOSED PAVEMENT/SIDEWALKS
  - PROPOSED STRUCTURE
  - TEMP. ACCESS ROAD AND CAUSEWAY
  - PORTAGE ROUTE
  - PORTAGE SIGN



**NOTE:**  
FOR SIGNING DETAILS SEE "SIGNING FABRICATION" SHEET.

DISTRICT	COUNTY	ROUTE	SECTION	SHEET
1-0	CRAWFORD	0006	B18	2 OF 3
CAMBRIDGE SPRINGS BOROUGH				
REVISION NUMBER	REVISIONS	DATE	BY	



AID TO NAVIGATION PLAN PORTAGE ROUTE

01/20/2018 12:15:14 PM  
 01/20/2018 12:15:14 PM  
 01/20/2018 12:15:14 PM

# Detour Route Improvements



# Detour Route Improvements

- LEGEND**
- PROPOSED PAVEMENT
  - PROPOSED SIDEWALK
  - REQUIRED RIGHT-OF-WAY
  - 11 AFFECTED PROPERTY





## Construction Schedule

- **Final Design** – Winter 2018 – Summer 2019
- **Advertise Project** – Summer 2019
- **Complete Detour Work** – Fall 2019
- **Complete Bridge Replacement** – Spring 2020  
– Fall 2020

## Bridge Aesthetic Treatments

- **Form Liners** - Are used as concrete is placed to create patterns images or architectural faces on outside vertical surfaces. Typically on walls, bridge abutments, parapets and piers.
  - Readily available standard form liners will be provided at no cost to the borough for this project. Custom form liners may be used but will require additional cost from the borough.
- **Railings** - On bridges and elevated pedestrian walkways.



*Hunters Station  
pattern from Native  
Pottery. U.S. 62  
Tionesta, Forest  
County*



*Bridge wayfinding  
signs*



*Above: Panel design will be very low  
maintenance and easy to repair in the  
future.*

## Lighting

- **Lighting** - This can vary greatly from a simple elegant black or galvanized pole to ornate period lighting.
  - Standard galvanized or black painted cobra head light fixtures will be provided at no cost to the borough for this project. Decorative fixtures and poles may be used but will required additional cost from the borough.



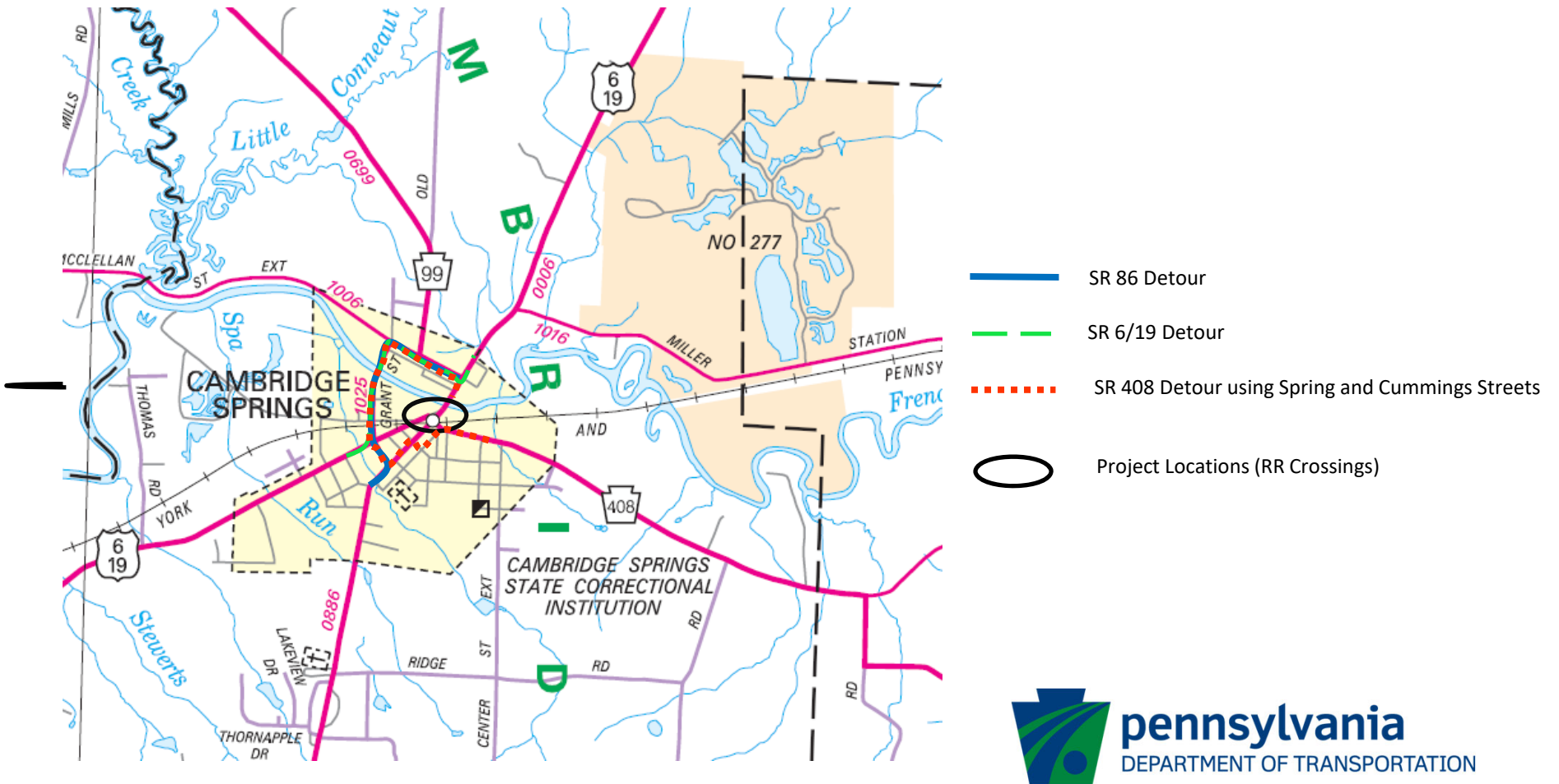
*SR 173 Cochran the municipality chose to go with a standard pole with cobra head LED light fixture with a galvanized finish. These have a low cost to operate.*



*Millfair roundabout black pendant light fixture with scroll work and shade.*

# Railroad Detours

## Cambridge Springs Railroad Crossing Surface Projects and Their Detours





# Questions?



PennDOT Project Manager  
Mark Nicholson, P.E.  
814.678.7379  
manicholson@pa.gov



Design Project Manager  
Donald Pasquinelli, P.E.  
412.788.0472  
dap@mackinengineering.com

