

Pennsylvania Department of Transportation

# Winter Services Guide

---

2025 - 2026



# Table of Contents

- Introduction ..... 1
- Getting Your Vehicle Ready for Winter ..... 2
- Winter Driving Tips ..... 3
- Winter Tools & Terms ..... 4
- Winter by the Numbers ..... 5
- Winter Storm Management ..... 6
- Average Plow Times ..... 7
- PennDOT by the Numbers - District 1 ..... 8
- PennDOT by the Numbers - District 2 ..... 10
- PennDOT by the Numbers - District 3 ..... 12
- PennDOT by the Numbers - District 4 ..... 14
- PennDOT by the Numbers - District 5 ..... 16
- PennDOT by the Numbers - District 6 ..... 18
- PennDOT by the Numbers - District 8 ..... 20
- PennDOT by the Numbers - District 9 ..... 22
- PennDOT by the Numbers - District 10 ..... 24
- PennDOT by the Numbers - District 11 ..... 26
- PennDOT by the Numbers - District 12 ..... 28

Dear Customers:

Whether it's the summer travel season or inclement weather is forecast, PennDOT is committed to keeping people and our economy moving safely.

The PennDOT team prepares for winter year-round. Our state-maintained roadway network is the fifth largest in the nation. We have more than 2,350 department plow trucks at the ready and we employ 4,700 equipment operators to brave the worst of winter to keep our roads passable. They are supplemented by nearly 380 contracted plow trucks and supported by 496 mechanics, managing more than 2,300 snow routes.



Technology continues helping us deliver transparent and efficient services, and we encourage you to use the many tools available to you in the season ahead. Our free and east 511PA service offers information year-round and we encourage you to sign up for personal alerts, the smartphone app, and use the many tools available to help you see road and traffic conditions. Our partnerships with federal, state, and local partners continue and will assist with any potential events and emergencies throughout the season.

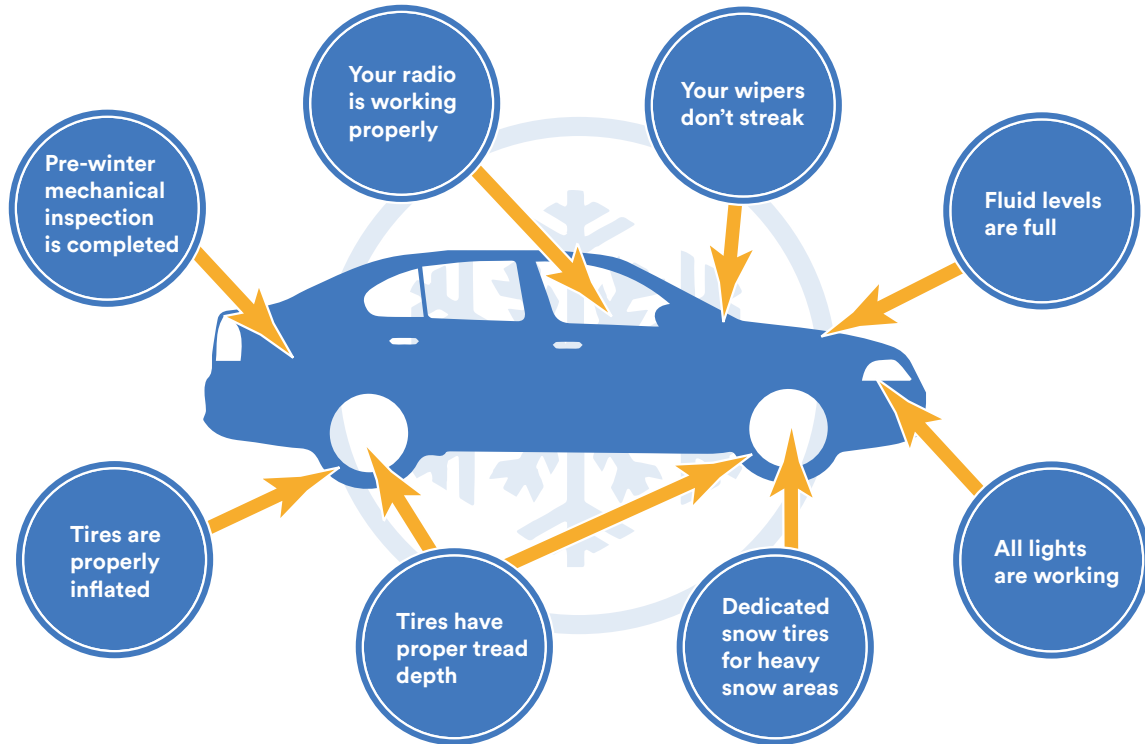
This Winter Services Guide outlines our operations and resources in each region across the state. Please help us by paying attention to winter weather forecasts before traveling, and if you must travel during storms, be prepared with needed supplies in your vehicle and slow down.

Just like we did when Erie got 63 inches of snow last Thanksgiving, PennDOT is ready to respond, no matter what the weather brings.

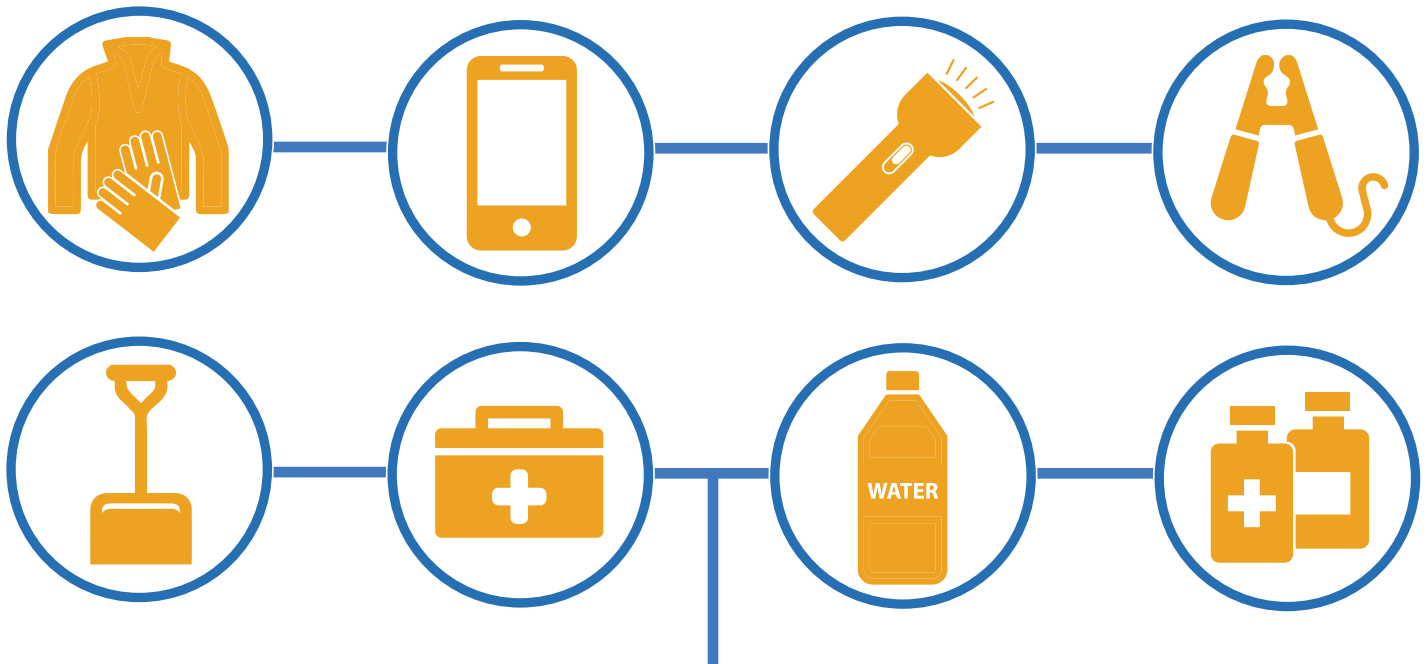
Sincerely,

Michael Carroll, PennDOT Secretary

## Getting Your Vehicle Ready for Winter – Motorists should ensure that...



## Emergency Travel Kit – Don't Leave Home Without It...



Also remember to include warm clothing and gloves, blanket, ice scraper, sand, non-perishable food and anything else you may need to accommodate family traveling with you (special medication, baby supplies, pet food, etc.).

## PennDOT Offers These Winter Driving Tips:

### Before You Go

- Prepare a winter emergency travel kit.
- Listen to weather and travel advisories.
- Visit [www.511PA.com](http://www.511PA.com) or call 511.
- Pack a cell phone and be sure it's charged.
- Remove snow and ice from your hood, roof and windows.
- Tell someone where you are going and when you expect to arrive.
- Do not drink and drive and always wear your seat belt.



### While You're Traveling

- Turn on your headlights when your wipers are on - it's the law.
- Watch for wet-looking roads, they could actually be frozen - "black ice."
- Use low beams in cases of heavy or blowing snow.
- Do not use cruise control on snow-covered roads.
- Slow down and increase following distance and avoid sudden stops and starts.
- Use extra caution on bridges and ramps where ice can often form without warning.
- Do not pass or get between trucks plowing in a plow line.
- If you do become stranded, it's recommended that you stay with your vehicle until help arrives. Run the engine every hour or so, but make sure the tailpipe is clear and keep the downwind window cracked open.
- Do not park or abandon your vehicle on snow emergency routes.

### Take Special Precautions

Use caution in areas where pedestrians may be present. Anticipate the presence of pedestrians in residential areas. Be alert for people entering the road from behind snow piles. Allow pedestrians extra time to cross icy or snow-covered streets.



### Winter Safety Tips for Pedestrians

- Wear brightly colored clothing.
- Stay on sidewalks whenever possible but if you must walk on the road, travel as close to the road shoulder as possible and always walk facing oncoming traffic.
- Allow drivers ample time to stop in icy conditions.
- Before crossing a street, look left, right and then left again to check for traffic.
- Always cross a street at an intersection and avoid entering the road from between parked cars or behind snow piles.

# PennDOT Winter Tools and Terms

**Anti-icing** - The application of salt brine to the road surface prior to winter storms. The solution lowers the freezing point of water and slows or prevents ice from forming a bond with the pavement during the early stages of a storm.

**Anti-skid** - Crushed limestone is used as an anti-skid material in addition to salt. The percentage of anti-skid varies by road type.

**De-icing** - The application of salt or salt brine to the roadway after snow or ice accumulation.

**Ground speed-activated salt spreader** - PennDOT trucks are equipped with an electronic material application system that automatically dispenses the desired amount of material. These systems ensure that the material is applied at a constant rate whether the truck is going 15 mph or 45 mph.

**Infrared temperature sensors** – Sensors are mounted on vehicles in the PennDOT fleet to provide the operator with the exact pavement temperature. This helps the operator determine if there is a potential for the roadway to freeze and when to start the treatment cycle.

**Pre-wetted salt** - Road salt is sprayed with salt brine to enhance the salt's melting capability in cold weather. Pre-wetting lowers the melting point of salt to make it more effective in lower temperatures.

**Salt Brine** - Salt brine is essentially salt water produced at 73 PennDOT facilities around the state. This material is used in anti-icing operations and to pre-wet salt.

**Salt** - Salt remains the department's primary weapon for fighting winter storms. PennDOT, which has 450 stockpiles around the state, has used an average of nearly 598,094 tons of salt over the last five winters.

**Single, tandem and tri-axle trucks** - Over the past several years, PennDOT has been replacing its single-axle trucks, which are capable of hauling 8 tons of material, with larger and more powerful tandem-axle trucks, which are capable of hauling 16 tons. Tri-axle trucks can haul up to 22 tons.

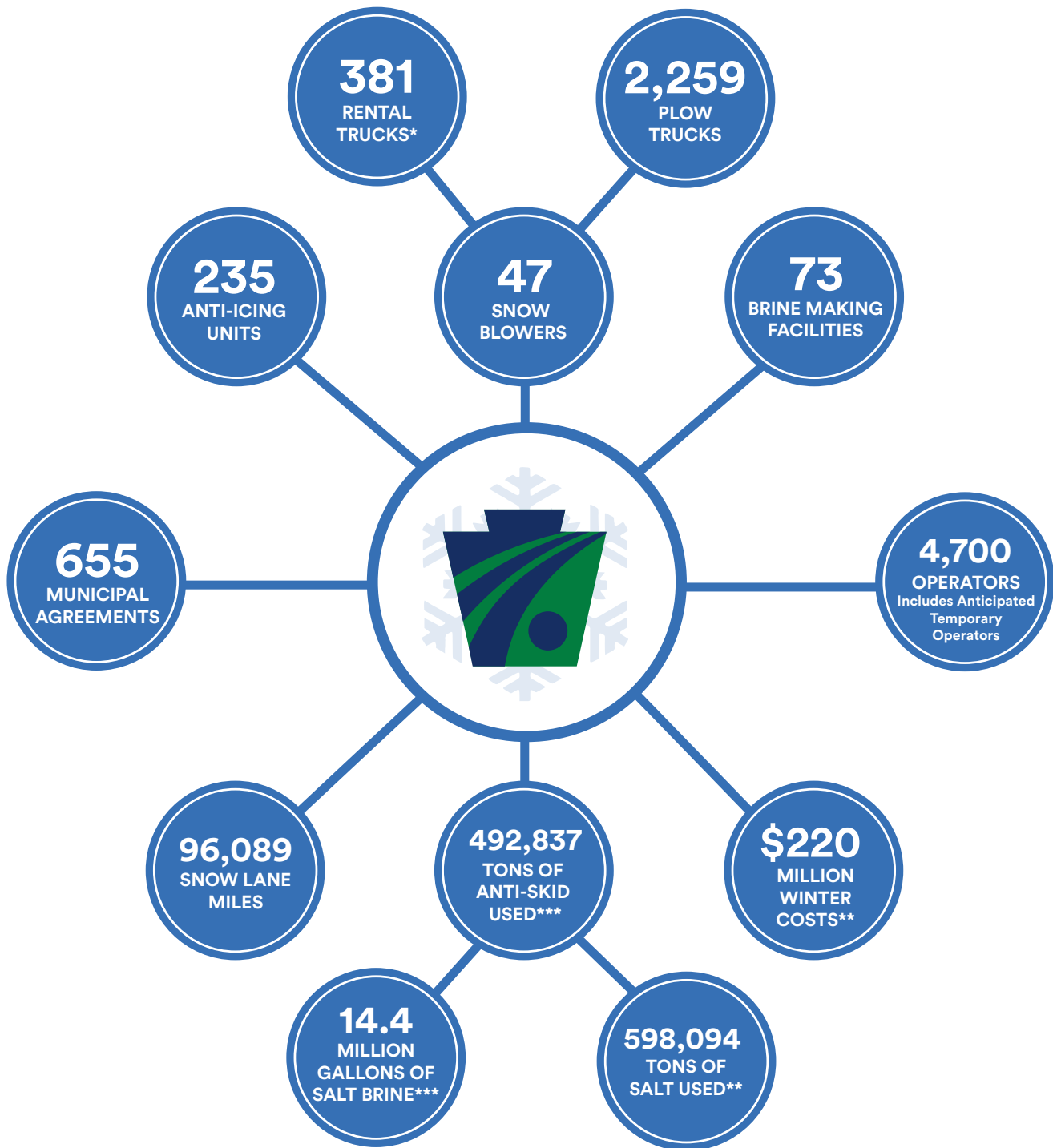
**Wing plow** - When mounted on both sides of a truck, can allow a truck to clear almost an extra 8 to 9 feet of lane width in addition to the 11 feet or so already cleared by the main plow.

**Tow plow** - Towed by a plow truck and when combined with a front plow, the combination will clear a width of 25 feet or two full lanes.

**Municipal Agreements** - Agreements in place for municipalities to clear state roads in their jurisdiction.



# Winter by the Numbers



\* Estimated number of rental trucks  
\*\* Average amount used over last five winters  
\*\*\* Amount used 2024-2025 winter

During winter weather, PennDOT's primary goal is to keep roads **passable and as safe as possible**. Roads **will not be free of ice and snow** while precipitation is falling.

## Storm Management

Each storm is different and varies, even from region to region. PennDOT staff review weather reports and on the ground conditions to plan how to manage each storm.

In a non-freezing rain storm, department crews may pre-treat with salt brine, essentially a mix of water and salt, from the backs of anti-icing trucks before frozen precipitation starts to fall. While salt brine isn't needed for every storm, when it's used it helps PennDOT get a jump start on removing ice and snow. Examples of when crews will not pretreat include when a storm is forecast to start as rain (rain will wash the material away) or when there is enough salt residue from a previous storm.

In addition to storm preparation, how PennDOT uses winter materials during storms varies by roadway and precipitation type. On higher-volume roadways, salt is the primary winter material used through a storm, especially during rush hours and on bridges, hills, curves and intersections. On lower-volume roadways the amount of salt will be reduced and anti-skid will be used more as salt is most effective with higher traffic volumes.

## More Traffic = More Attention from Plows



# Average Plow Times During Winter Weather Events

The time it takes for a plow truck to pass by the same point on the route depends on how heavy precipitation is and how much traffic is on the roadway.

Interstates and expressways are PennDOT's primary focus. In fact, equipment may be redirected to these roads during significant storms.

## Under Ideal Conditions in a Low-Accumulation Storm

**INTERSTATES & EXPRESSWAYS**  
Interstates and expressways will see a plow route completed in roughly two hours.

**OTHER MAJOR ROUTES**  
Other major routes or less-traveled state roads may see a plow every three hours.



### **SECONDARY STATE ROADS**

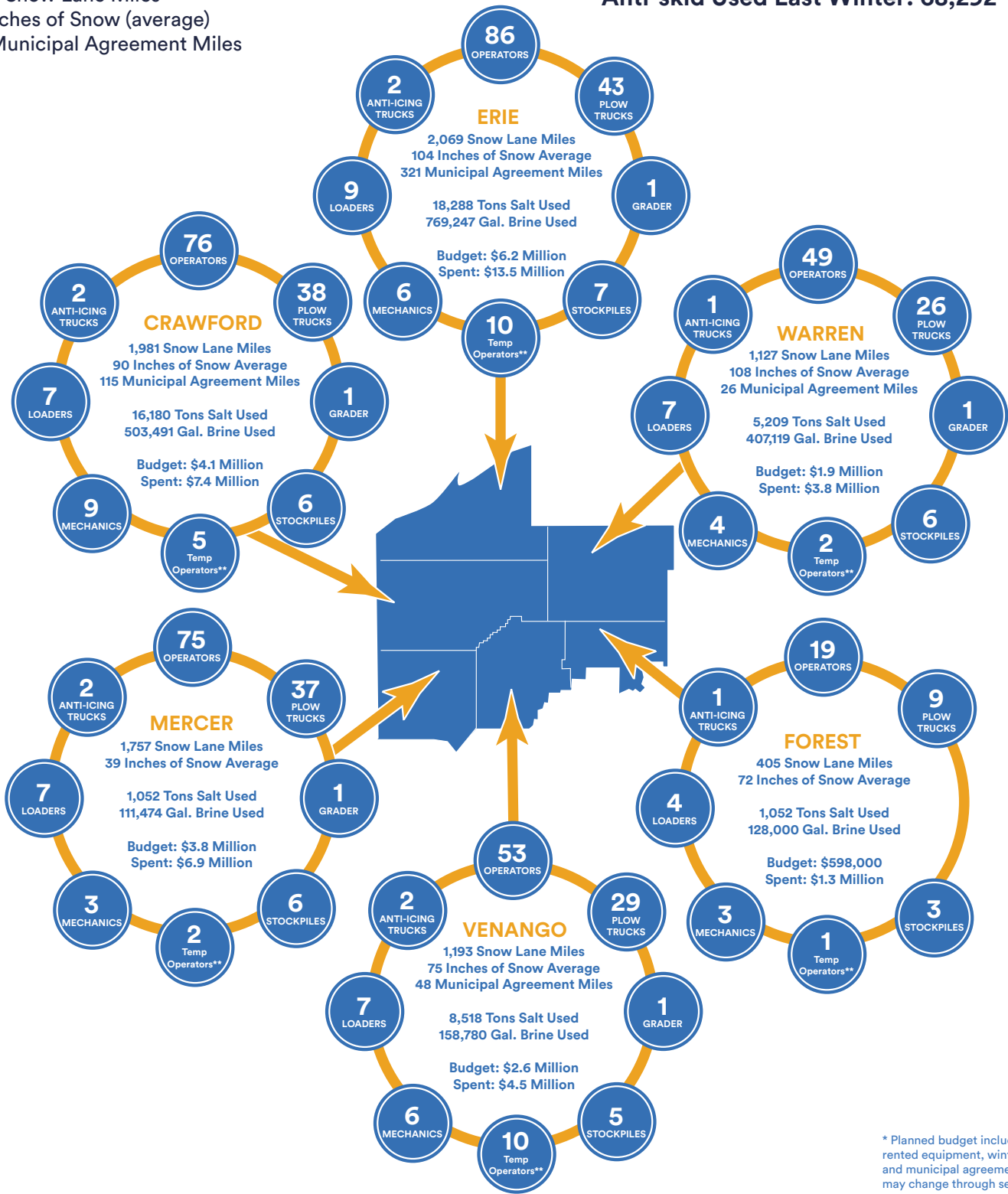
Because trucks are often redirected to higher-priority roads, it can take several hours to complete a route on the lowest-volume roadways.

The **heavier** the traffic or precipitation on a roadway, the **longer** these routes will take.

# DISTRICT 1

**Winter Budget: \$19.2 Million\***  
**Spent Last Winter: \$37.7 Million\*\*\***  
 8,531 Snow Lane Miles  
 83 Inches of Snow (average)  
 515 Municipal Agreement Miles

**Salt Used Last Winter: 98,731 Tons**  
**Brine Used Last Winter: 1,670,994 Gallons**  
**Anti-skid Used Last Winter: 68,292 Tons**



\* Planned budget includes personnel, rented equipment, winter materials and municipal agreements. Budget may change through season depending on needs.

\*\* Anticipated Temporary Operators

\*\*\*Budget spent 2024-2025 winter

Each county's budget numbers are rounded up. District totals are calculated using actual total number and rounded up.

**DISTRICT 1 OFFICE**

255 Elm Street  
Oil City, PA 16301  
814-678-7085

**CRAWFORD COUNTY OFFICE**

18492 Smock Highway  
Meadville, PA 16335  
814-332-6880

**ERIE COUNTY OFFICE**

9031 Peach Street  
Waterford, PA 16441  
814-871-4411

**FOREST COUNTY OFFICE**

645 Elm Street  
Tionesta, PA 16353  
814-755-3580

**MERCER COUNTY OFFICE**

215 North Maple Street  
Mercer, PA 16137  
724-662-5350

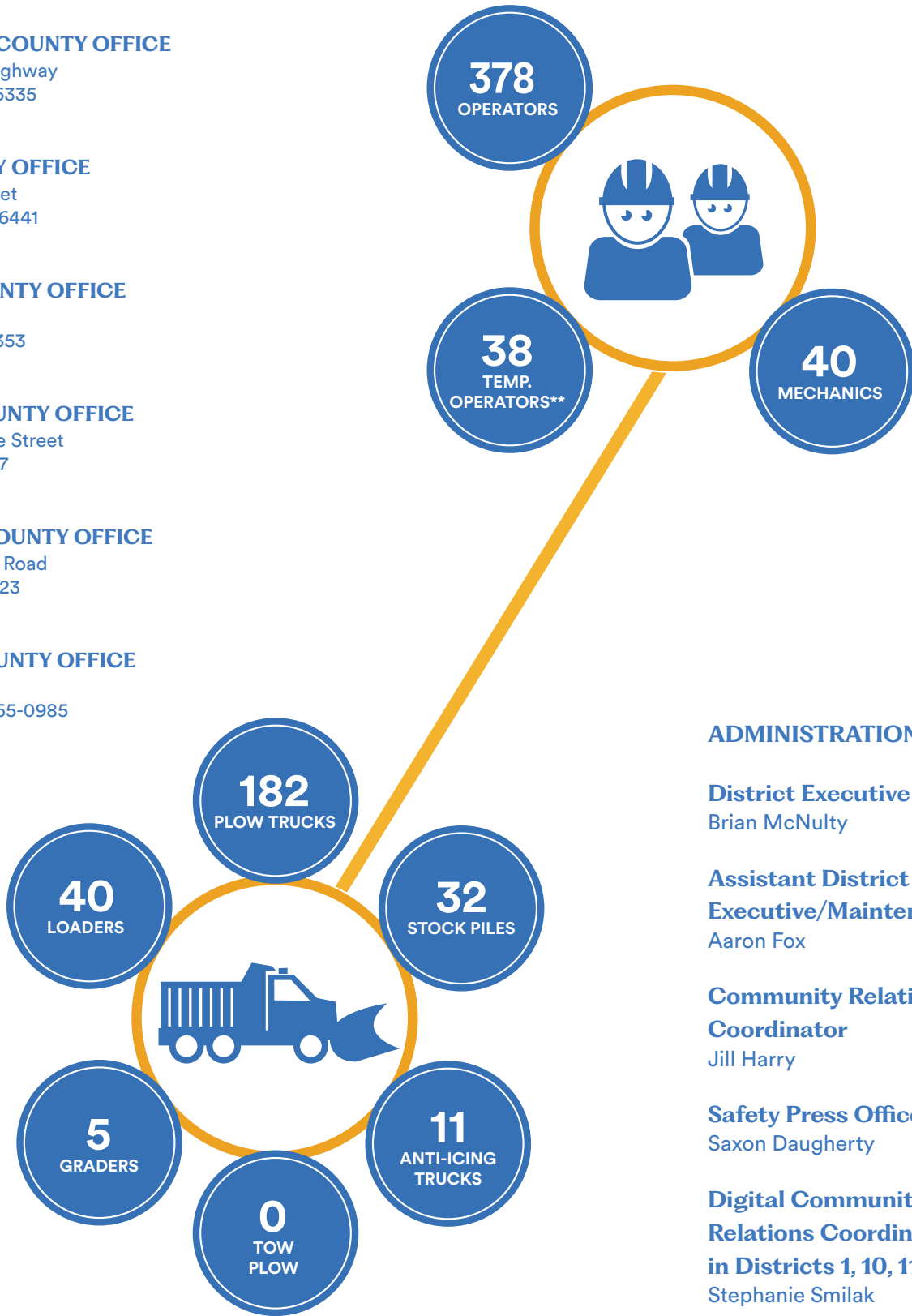
**VENANGO COUNTY OFFICE**

1460 Pittsburgh Road  
Franklin, PA 16323  
814-432-3115

**WARREN COUNTY OFFICE**

20745 Route 6  
Warren, PA 16365-0985  
814-723-3500

**DISTRICT 1 TOTALS**



**ADMINISTRATION**

**District Executive**  
Brian McNulty

**Assistant District Executive/Maintenance**  
Aaron Fox

**Community Relations Coordinator**  
Jill Harry

**Safety Press Officer**  
Saxon Daugherty

**Digital Community Relations Coordinator in Districts 1, 10, 11, & 12**  
Stephanie Smilak

\*\* Anticipated Temporary Operators

# DISTRICT 2

Winter Budget: \$17.3 Million\*

Spent Last Winter: \$27.3 Million\*\*\*

7,829 Snow Lane Miles

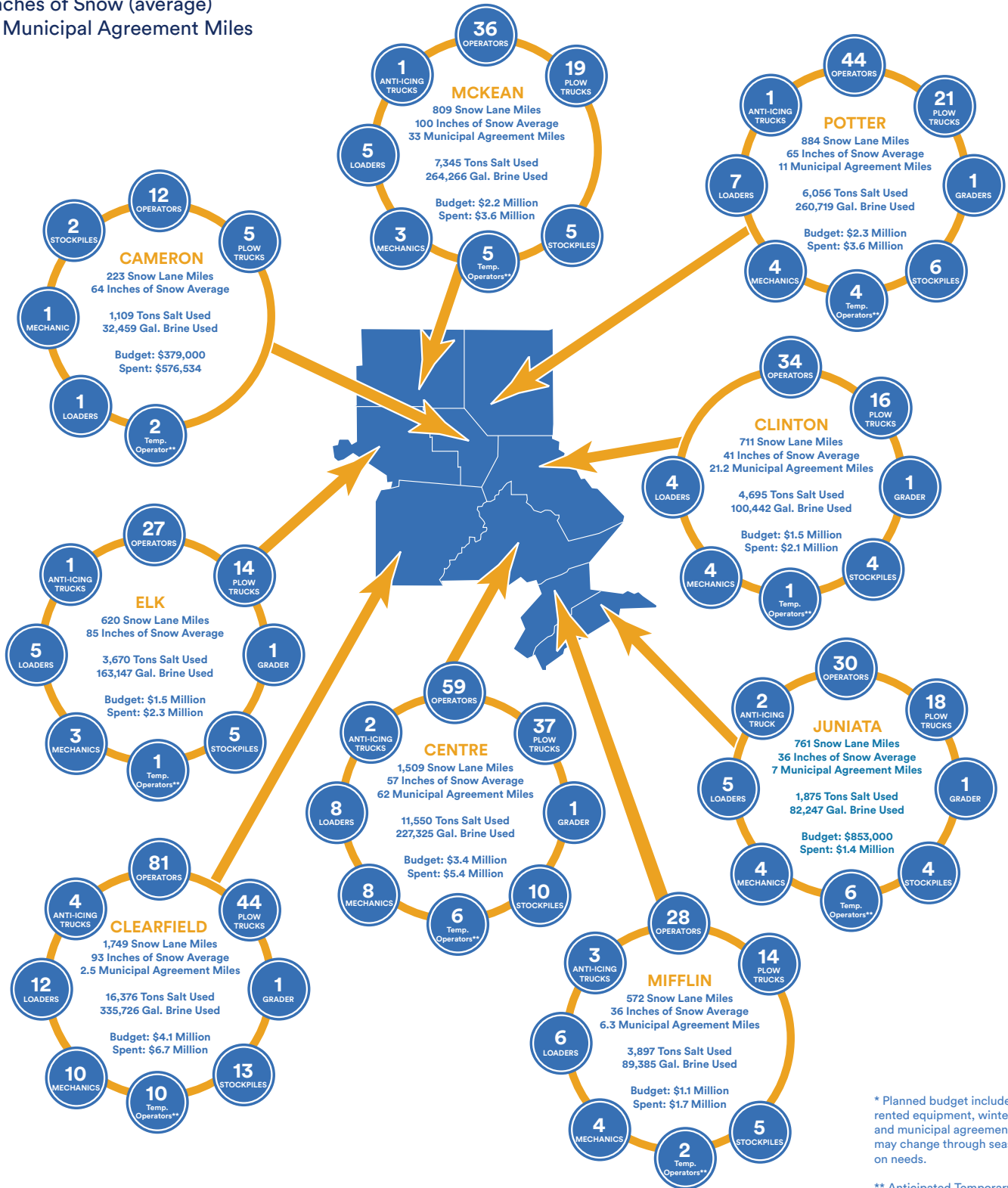
64 Inches of Snow (average)

80.8 Municipal Agreement Miles

Salt Used Last Winter: 56,573 Tons

Brine Used Last Winter: 2,792,949 Gallons

Anti-skid Used Last Winter: 63,424 Tons



\* Planned budget includes personnel, rented equipment, winter materials and municipal agreements. Budget may change through season depending on needs.

\*\* Anticipated Temporary Operators

\*\*\*Budget spent 2024-2025 winter

Each county's budget numbers are rounded up. District totals are calculated using actual total number and rounded up.

**DISTRICT 2 OFFICE**

70 PennDOT Drive  
Clearfield, PA 16830  
814-765-0400

**JUNIATA COUNTY OFFICE**

4373 William Penn Highway  
Mifflintown, PA 17059  
717-436-2187

**DISTRICT 2 TOTALS**

**CAMERON COUNTY OFFICE**

21013 CCC Memorial Highway  
Emporium, PA 15834  
814-486-1643

**MCKEAN COUNTY OFFICE**

300 Bingham Road  
Cyclone, PA 16726  
814-465-7754

**CENTRE COUNTY OFFICE**

1000 East Bishop Street  
Bellefonte, PA 16823  
814-355-4731

**MIFFLIN COUNTY OFFICE**

1200 West Fourth Street  
Lewistown, PA 17044  
717-248-7851

**CLEARFIELD COUNTY OFFICE**

1905 Washington Avenue  
P.O. Box 245  
Hyde, PA 16843  
814-765-0524

**POTTER COUNTY OFFICE**

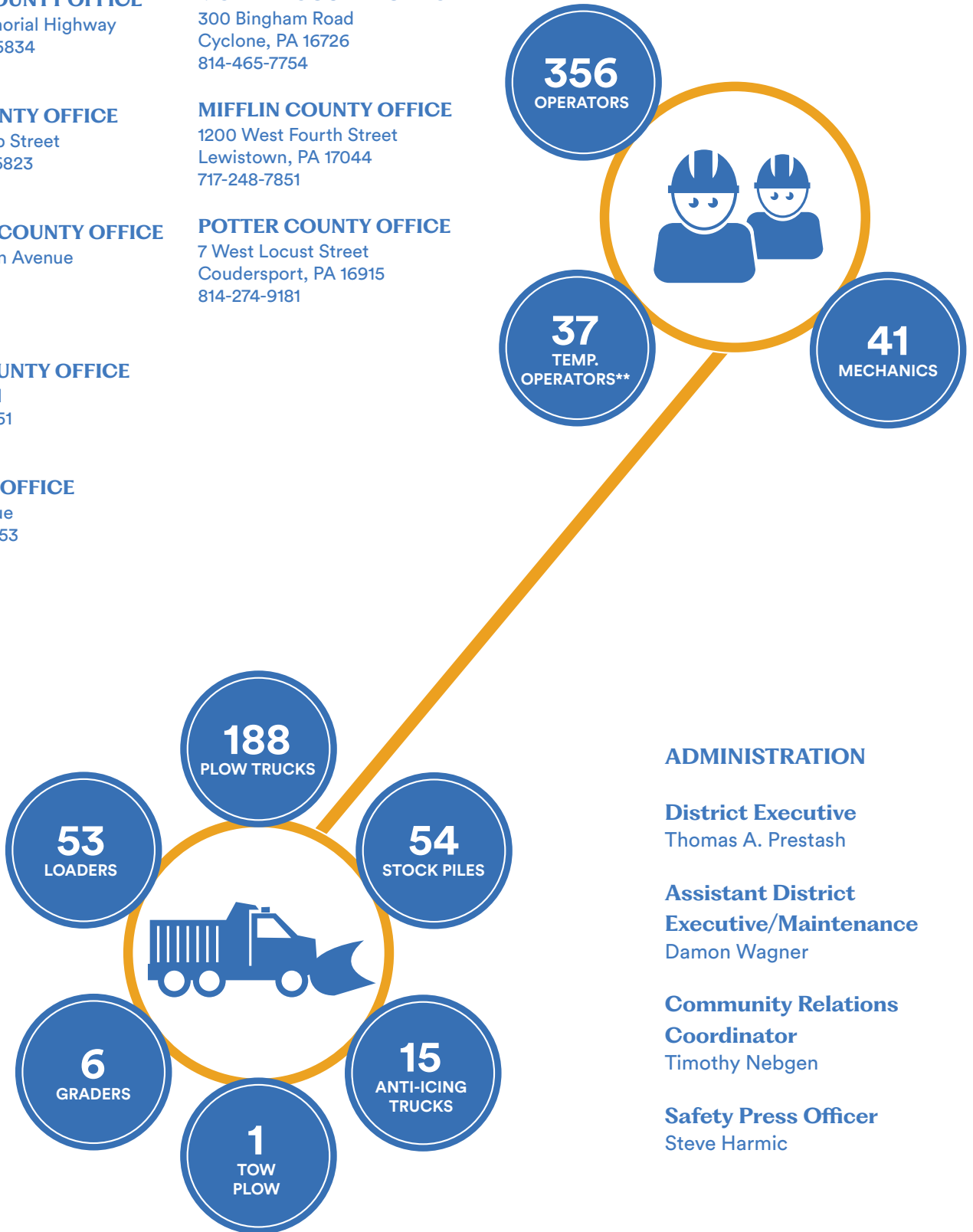
7 West Locust Street  
Coudersport, PA 16915  
814-274-9181

**CLINTON COUNTY OFFICE**

1054 Ridge Road  
Mill Hall, PA 17751  
570-726-2200

**ELK COUNTY OFFICE**

32 St. Leo Avenue  
Ridgway, PA 15853  
814-772-0038



**ADMINISTRATION**

**District Executive**  
Thomas A. Prestash

**Assistant District Executive/Maintenance**  
Damon Wagner

**Community Relations Coordinator**  
Timothy Nebgen

**Safety Press Officer**  
Steve Harmac

\*\* Anticipated Temporary Operators

# DISTRICT 3

Winter Budget: \$16.7 Million\*

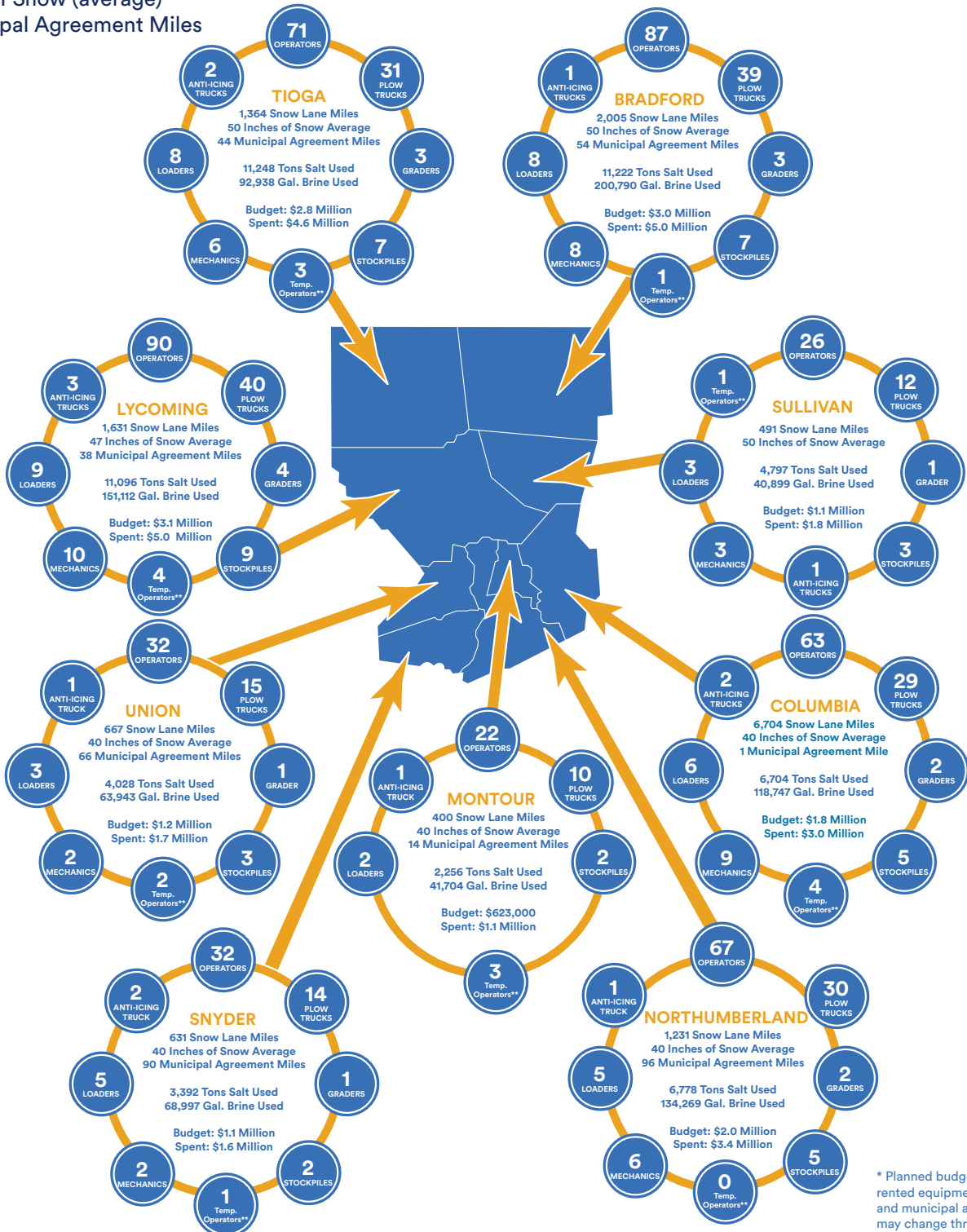
Spent Last Winter: \$27 Million\*\*\*

9,519 Snow Lane Miles  
43 Inches of Snow (average)  
403 Municipal Agreement Miles

Salt Used Last Winter: 61,458 Tons

Brine Used Last Winter: 859,135 Gallons

Anti-skid Used Last Winter: 49,003 Tons



\* Planned budget includes personnel, rented equipment, winter materials and municipal agreements. Budget may change through season depending on needs.

\*\* Anticipated Temporary Operators

\*\*\*Budget spent 2024-2025 winter

Each county's budget numbers are rounded up. District totals are calculated using actual total number and rounded up.

**DISTRICT 3 OFFICE**

715 Jordan Avenue  
Montoursville, PA 17754  
570-368-8686

**BRADFORD COUNTY OFFICE**

340 York Avenue  
Towanda, PA 18848  
570-265-2181

**COLUMBIA COUNTY OFFICE**

45 Lunger Drive  
Bloomsburg, PA 17815  
570-387-4250

**LYCOMING COUNTY OFFICE**

716 Jordan Avenue  
Montoursville, PA 17754  
570-368-4281

**MONTOUR COUNTY OFFICE**

45 Lunger Drive  
Bloomsburg, PA 17815  
570-387-4250

**NORTHUMBERLAND COUNTY OFFICE**

355 Dewart St.  
Sunbury, PA 17801  
570-286-7178

**SNYDER COUNTY OFFICE**

45 Industrial Park Road  
Selinsgrove, PA 17870  
570-372-9100

**SULLIVAN COUNTY OFFICE**

322 Park Street  
P.O. Box 128  
Laporte, PA 18626  
570-946-4031

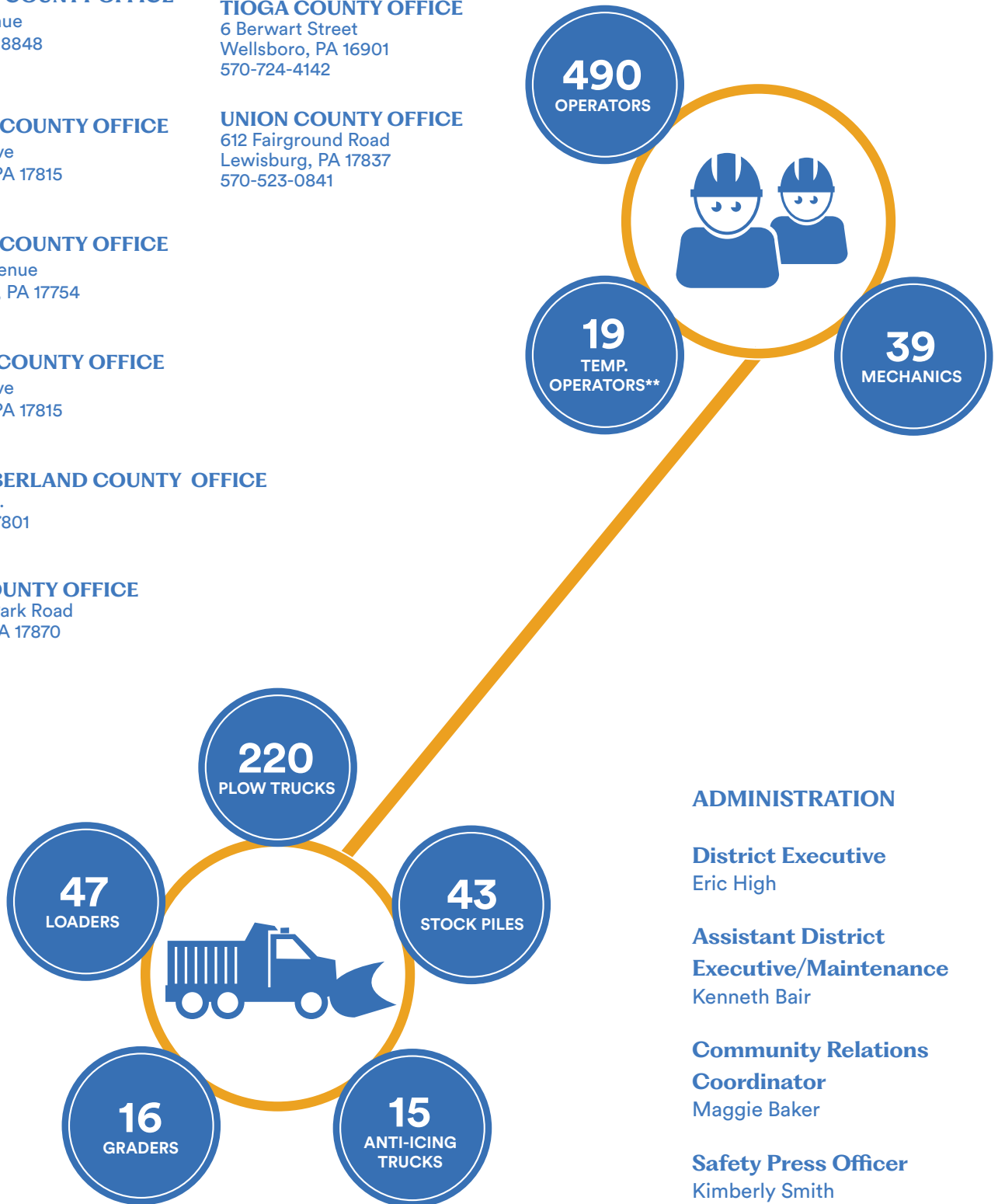
**TIOGA COUNTY OFFICE**

6 Berwart Street  
Wellsboro, PA 16901  
570-724-4142

**UNION COUNTY OFFICE**

612 Fairground Road  
Lewisburg, PA 17837  
570-523-0841

**DISTRICT 3 TOTALS**



**ADMINISTRATION**

**District Executive**  
Eric High

**Assistant District Executive/Maintenance**  
Kenneth Bair

**Community Relations Coordinator**  
Maggie Baker

**Safety Press Officer**  
Kimberly Smith

\*\* Anticipated Temporary Operators

# DISTRICT 4

Winter Budget: \$24.6 Million\*

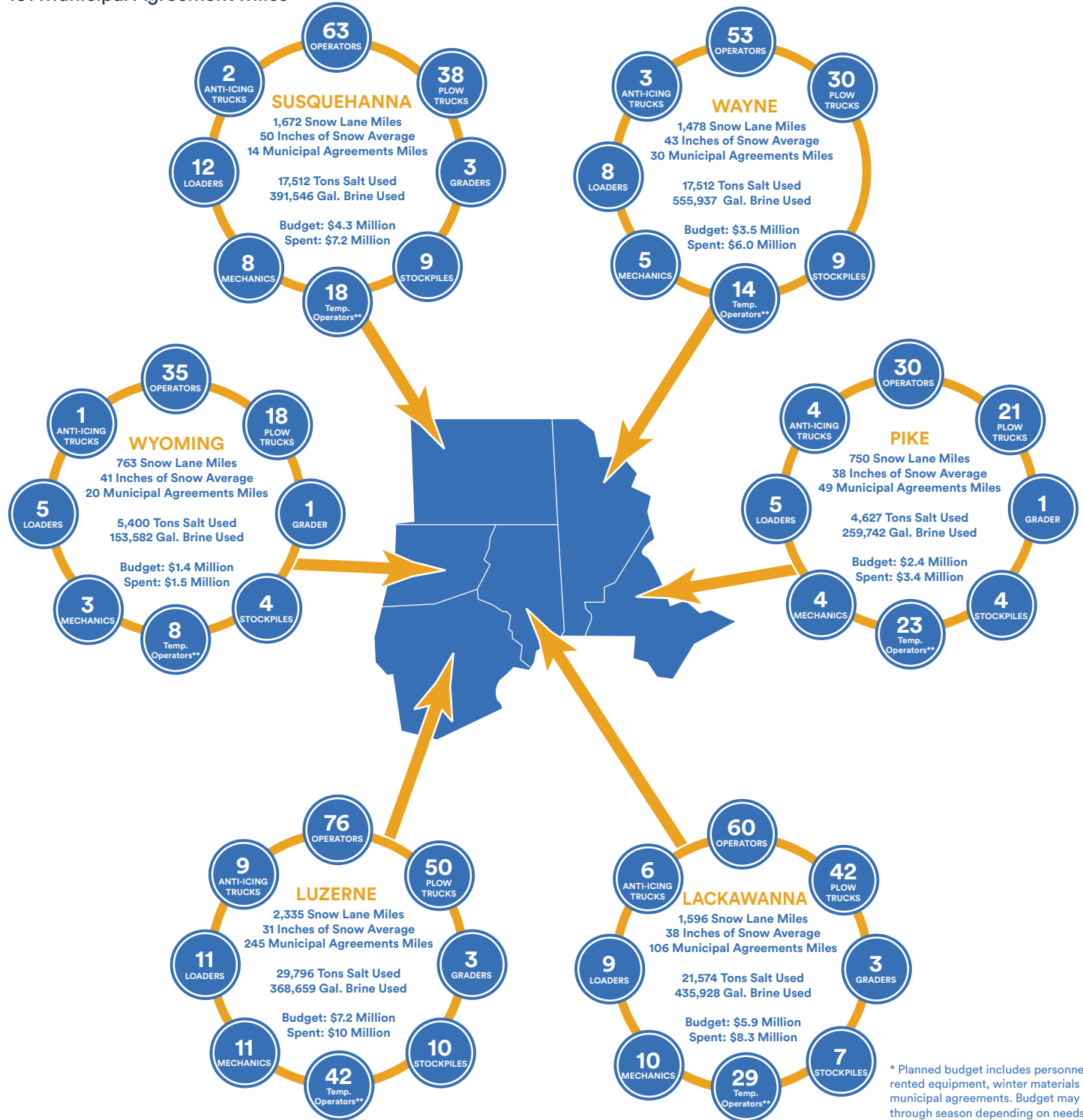
Spent Last Winter: \$26.1 Million\*\*\*

8,538 Snow Lane Miles  
 40 Inches of Snow (average)  
 451 Municipal Agreement Miles

Salt Used Last Winter: 91,525 Tons

Brine Used Last Winter: 2,165,396 Gallons

Anti-skid Used Last Winter: 60,447 Tons



\* Planned budget includes personnel, rented equipment, winter materials and municipal agreements. Budget may change through season depending on needs.

\*\* Anticipated Temporary Operators

\*\*\*Budget spent 2024-2025 winter

Each county's budget numbers are rounded up. District totals are calculated using actual total number and rounded up.

**DISTRICT 4 OFFICE**

55 Keystone Ind. Park  
Dunmore, PA 18512  
570 963-4061

**LACKAWANNA COUNTY OFFICE**

1034 Morgan Highway  
Clarks Summit, PA 18411  
570 586-2211

**LUZERNE COUNTY OFFICE**

381 South Main Street  
Ashley, PA 18706  
570-826-2386

**PIKE COUNTY OFFICE**

291 SR 739  
Hawley, PA 18428  
570-576-3924

**SUSQUEHANNA COUNTY OFFICE**

18786 State Route 706  
Montrose, PA 18801  
570-278-1171

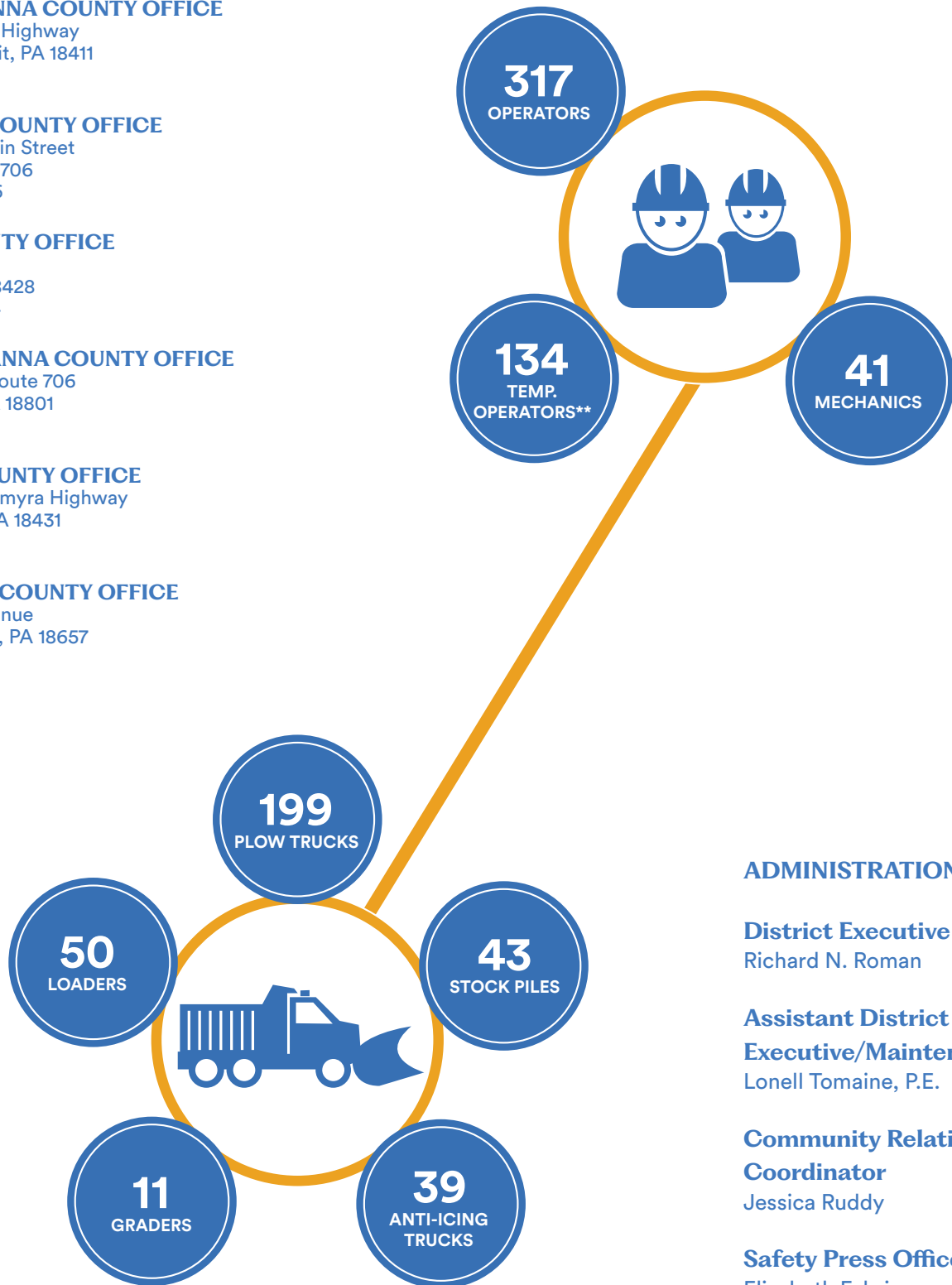
**WAYNE COUNTY OFFICE**

984 Texas Palmyra Highway  
Honesdale, PA 18431  
570 253-3130

**WYOMING COUNTY OFFICE**

1 Franklin Avenue  
Tunkhannock, PA 18657  
570-836-3141

**DISTRICT 4 TOTALS**



**ADMINISTRATION**

**District Executive**  
Richard N. Roman

**Assistant District Executive/Maintenance**  
Lonell Tomaine, P.E.

**Community Relations Coordinator**  
Jessica Ruddy

**Safety Press Officer**  
Elizabeth Fabri

\*\* Anticipated Temporary Operators

# DISTRICT 5

Winter Budget: \$19.8 Million\*

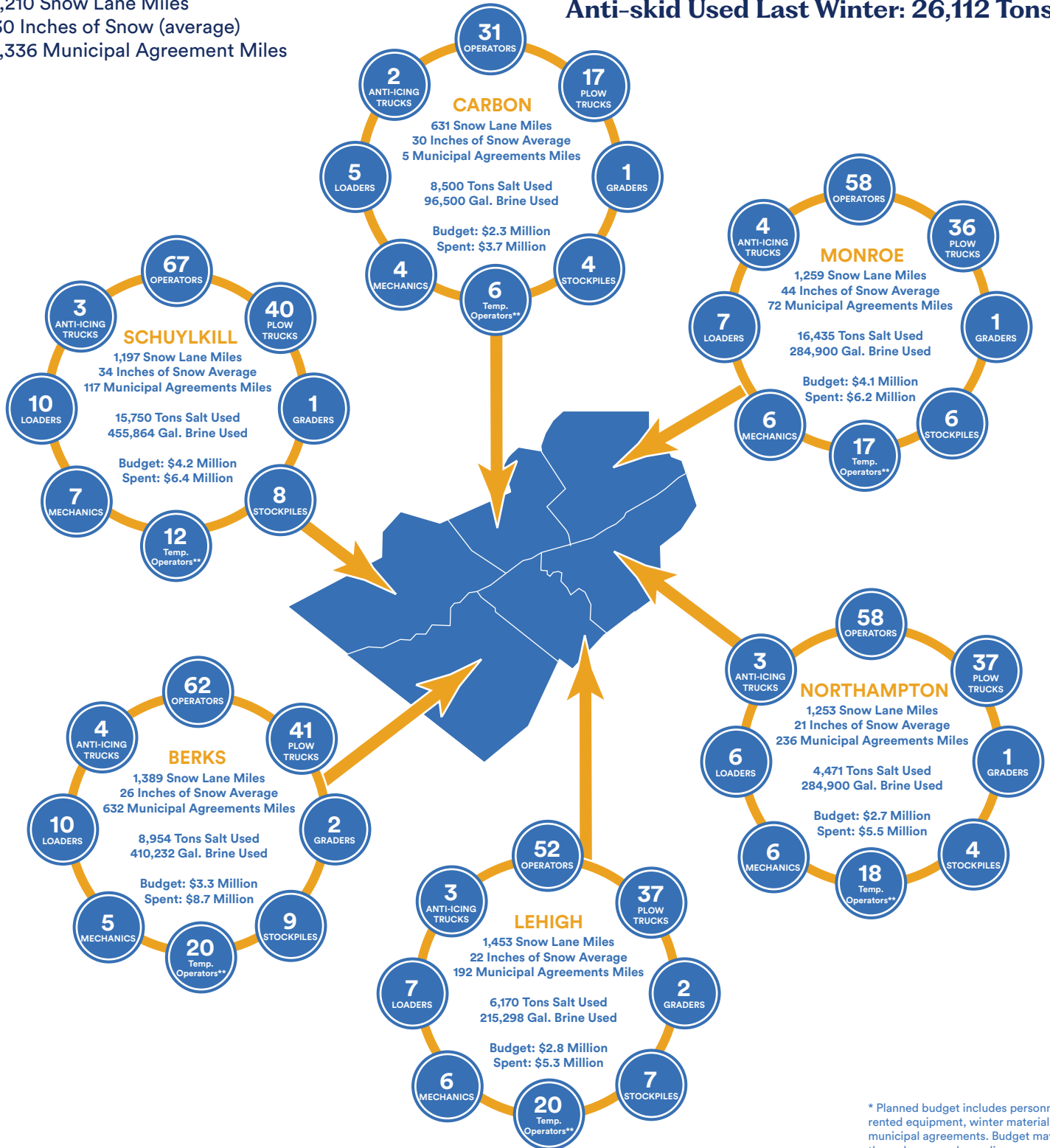
Spent Last Winter: \$35.7 Million\*\*\*

7,210 Snow Lane Miles  
 30 Inches of Snow (average)  
 1,336 Municipal Agreement Miles

Salt Used Last Winter: 78,036 Tons

Brine Used Last Winter: 1,588,127 Gallons

Anti-skid Used Last Winter: 26,112 Tons



\* Planned budget includes personnel, rented equipment, winter materials and municipal agreements. Budget may change through season depending on needs.

\*\* Anticipated Temporary Operators

\*\*\*Budget spent 2024-2025 winter

Each county's budget numbers are rounded up. District totals are calculated using actual total number and rounded up.

**DISTRICT 5 OFFICE**

1002 Hamilton Street  
Allentown, PA 18101  
610-871-4100

**BERKS COUNTY OFFICE**

4680 Fifth Street Highway  
Temple, PA 19560  
610-929-0766

**CARBON COUNTY OFFICE**

930 Bridge Street  
Lehighton, PA 18235  
610-377-1880

**LEHIGH COUNTY OFFICE**

1712 Lehigh Street  
Allentown, PA 18103  
610-798-4280

**MONROE COUNTY OFFICE**

1586 N. 9th Street  
Stroudsburg, PA 18360  
570-424-3024

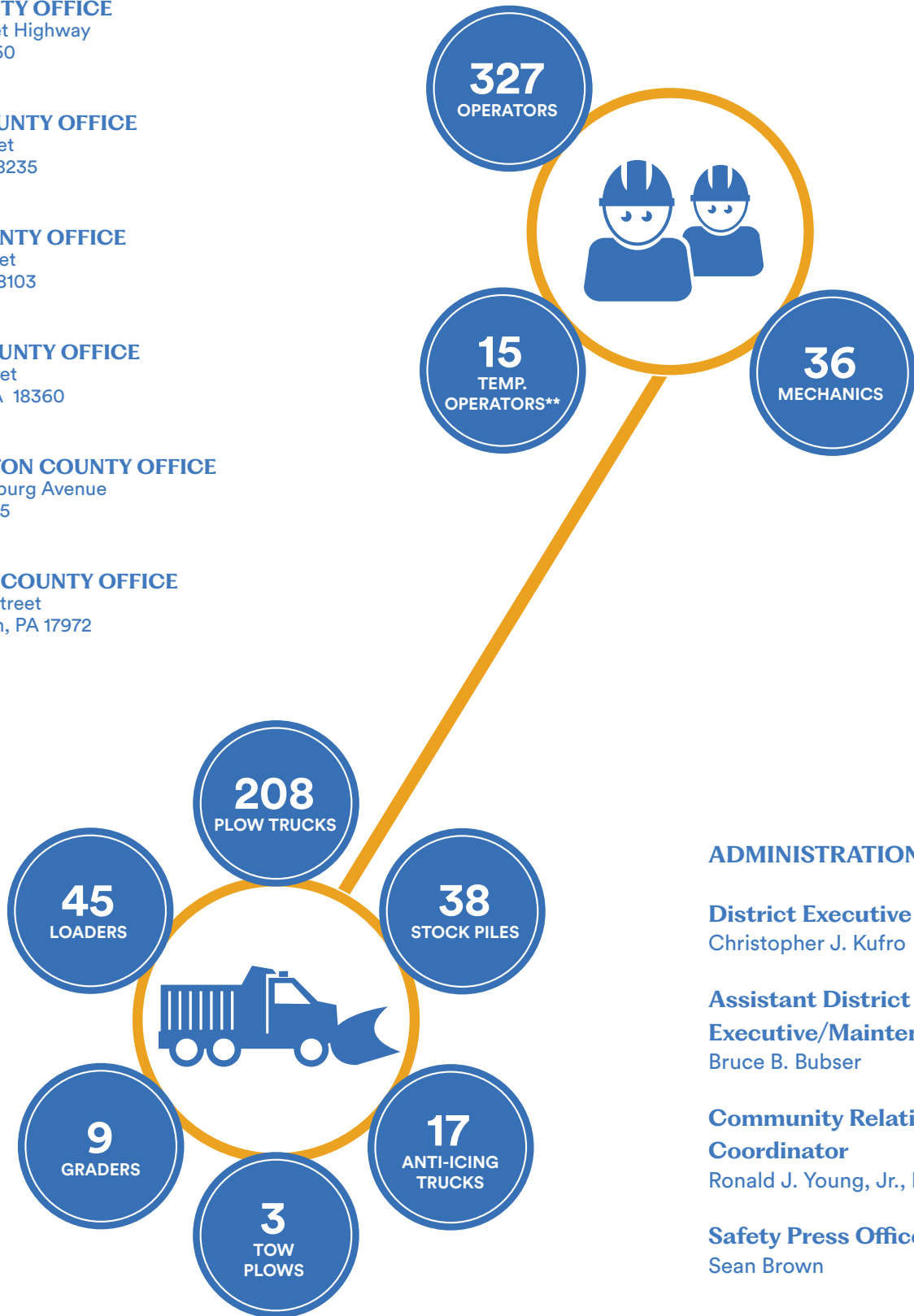
**NORTHAMPTON COUNTY OFFICE**

3300 Freemansburg Avenue  
Easton, PA 18045  
610-250-1840

**SCHUYLKILL COUNTY OFFICE**

970 East Main Street  
Schuylkill Haven, PA 17972  
570-385-7812

**DISTRICT 5 TOTALS**



**ADMINISTRATION**

**District Executive**  
Christopher J. Kufro

**Assistant District Executive/Maintenance**  
Bruce B. Bubser

**Community Relations Coordinator**  
Ronald J. Young, Jr., M.P.A.

**Safety Press Officer**  
Sean Brown

\*\* Anticipated Temporary Operators

# DISTRICT 6

Winter Budget: \$22.0 Million\*

Spent Last Winter: \$31.6 Million\*\*\*

11,221 Snow Lane Miles

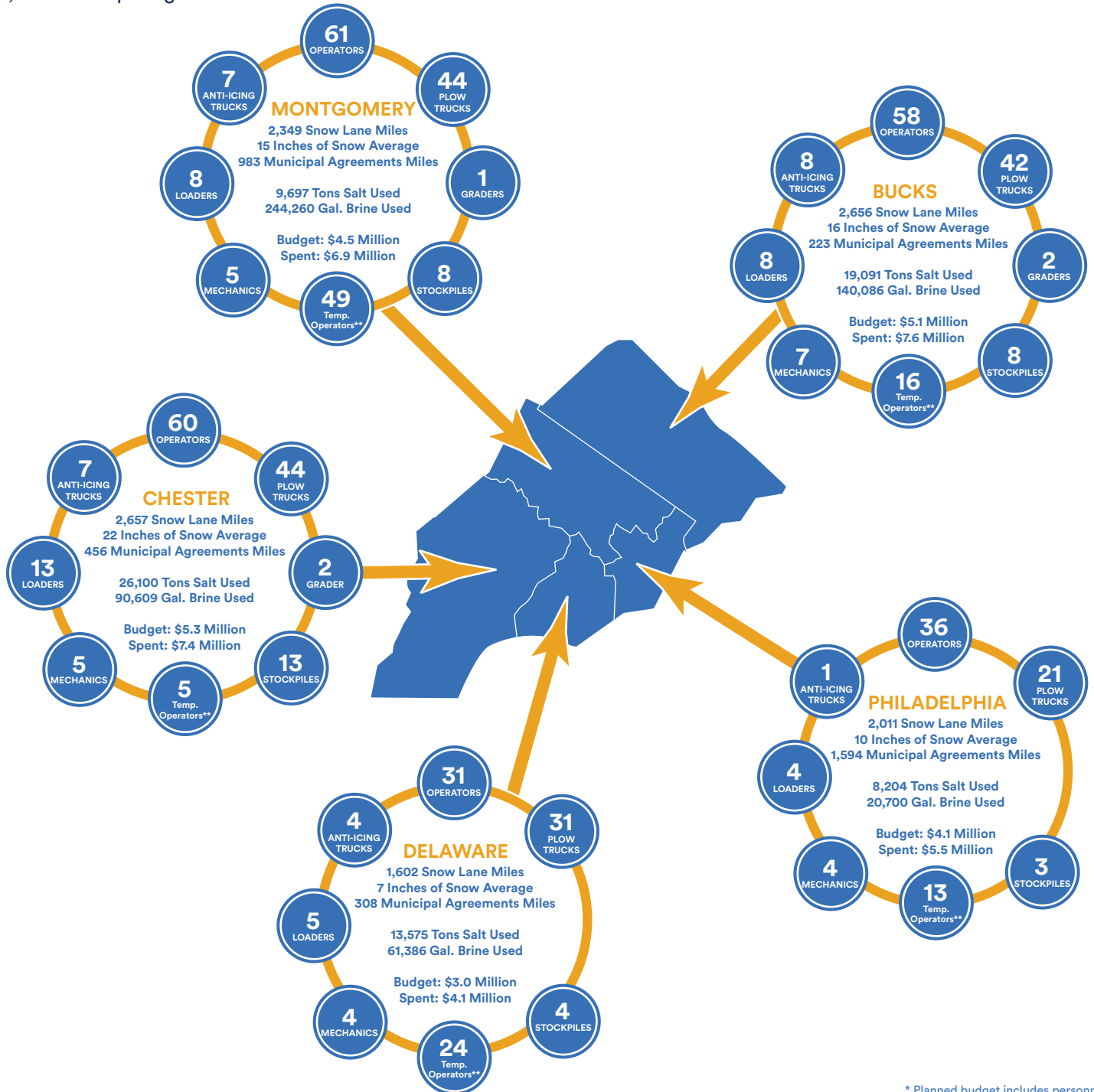
14 Inches of Snow (average)

3,565 Municipal Agreement Miles

Salt Used Last Winter: 85,341 Tons

Brine Used Last Winter: 490,676 Gallons

Anti-skid Used Last Winter: 5,346 Tons



\* Planned budget includes personnel, rented equipment, winter materials and municipal agreements. Budget may change through season depending on needs.

\*\* Anticipated Temporary Operators

\*\*\*Budget spent 2024-2025 winter

Each county's budget numbers are rounded up. District totals are calculated using actual total number and rounded up.

**DISTRICT 6 OFFICE**

7000 Geerdes Blvd.  
King of Prussia, PA 19406  
610-205-6700

**BUCKS COUNTY OFFICE**

6160 Potters Lane  
Pipersville, PA 18947  
215-345-6060

**CHESTER COUNTY OFFICE**

711 Ryan Boulevard  
Coatesville, PA 19320  
484-340-3200

**DELAWARE COUNTY OFFICE**

426 S. Old Middletown Rd.  
P.O. Box B  
Media, PA 19063  
610-566-0972

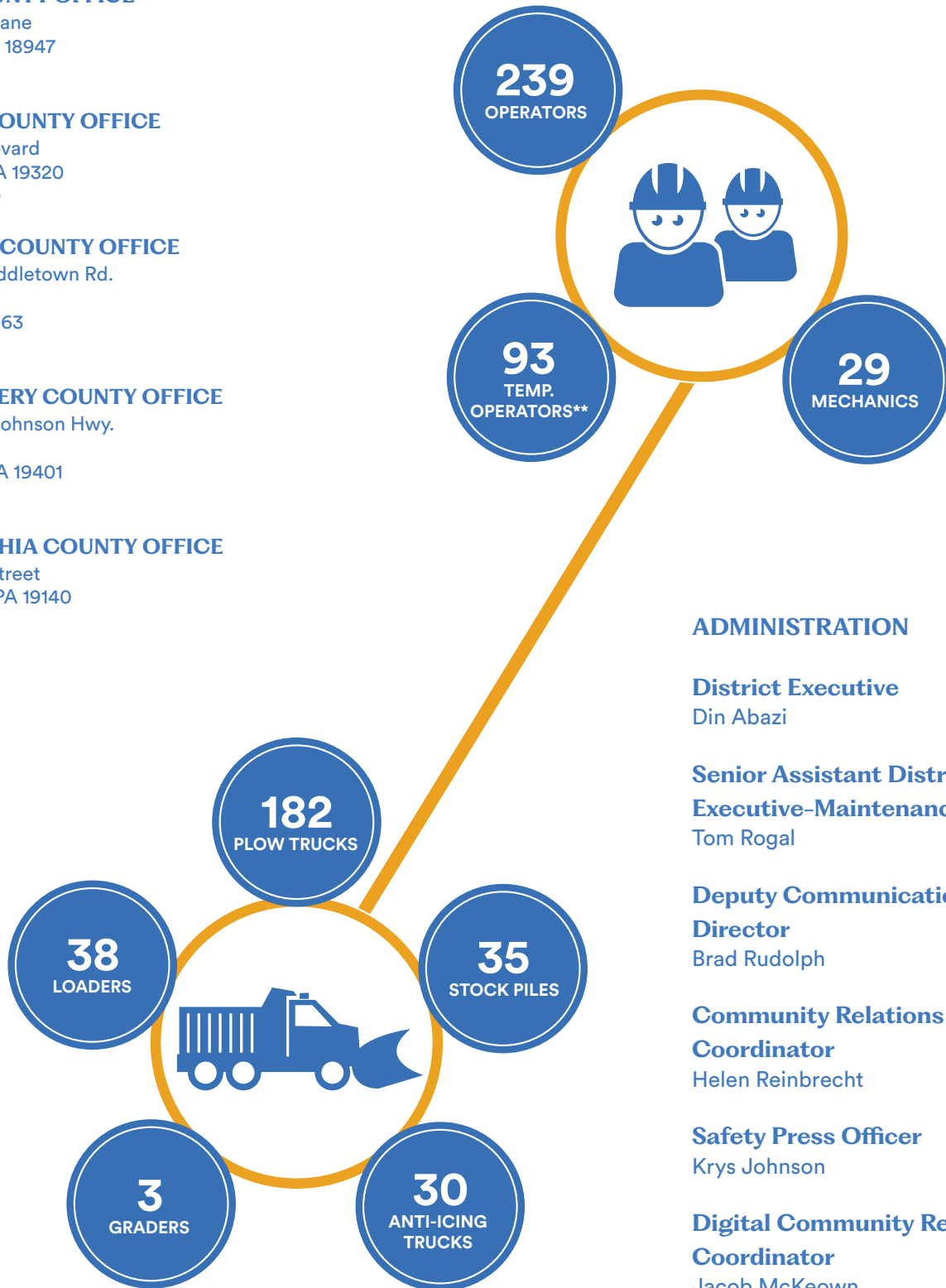
**MONTGOMERY COUNTY OFFICE**

Swede Rd. & Johnson Hwy.  
P.O. Box 350  
Norristown, PA 19401  
610-275-2368

**PHILADELPHIA COUNTY OFFICE**

1901 Ruffner Street  
Philadelphia, PA 19140  
215-225-1415

**DISTRICT 6 TOTALS**



**ADMINISTRATION**

**District Executive**  
Din Abazi

**Senior Assistant District Executive-Maintenance**  
Tom Rogal

**Deputy Communications Director**  
Brad Rudolph

**Community Relations Coordinator**  
Helen Reinbrecht

**Safety Press Officer**  
Krys Johnson

**Digital Community Relations Coordinator**  
Jacob McKeown

\*\* Anticipated Temporary Operators

# DISTRICT 8

Winter Budget: \$17.1 Million\*

Spent Last Winter: \$33.4 Million\*\*\*

12,573 Snow Lane Miles

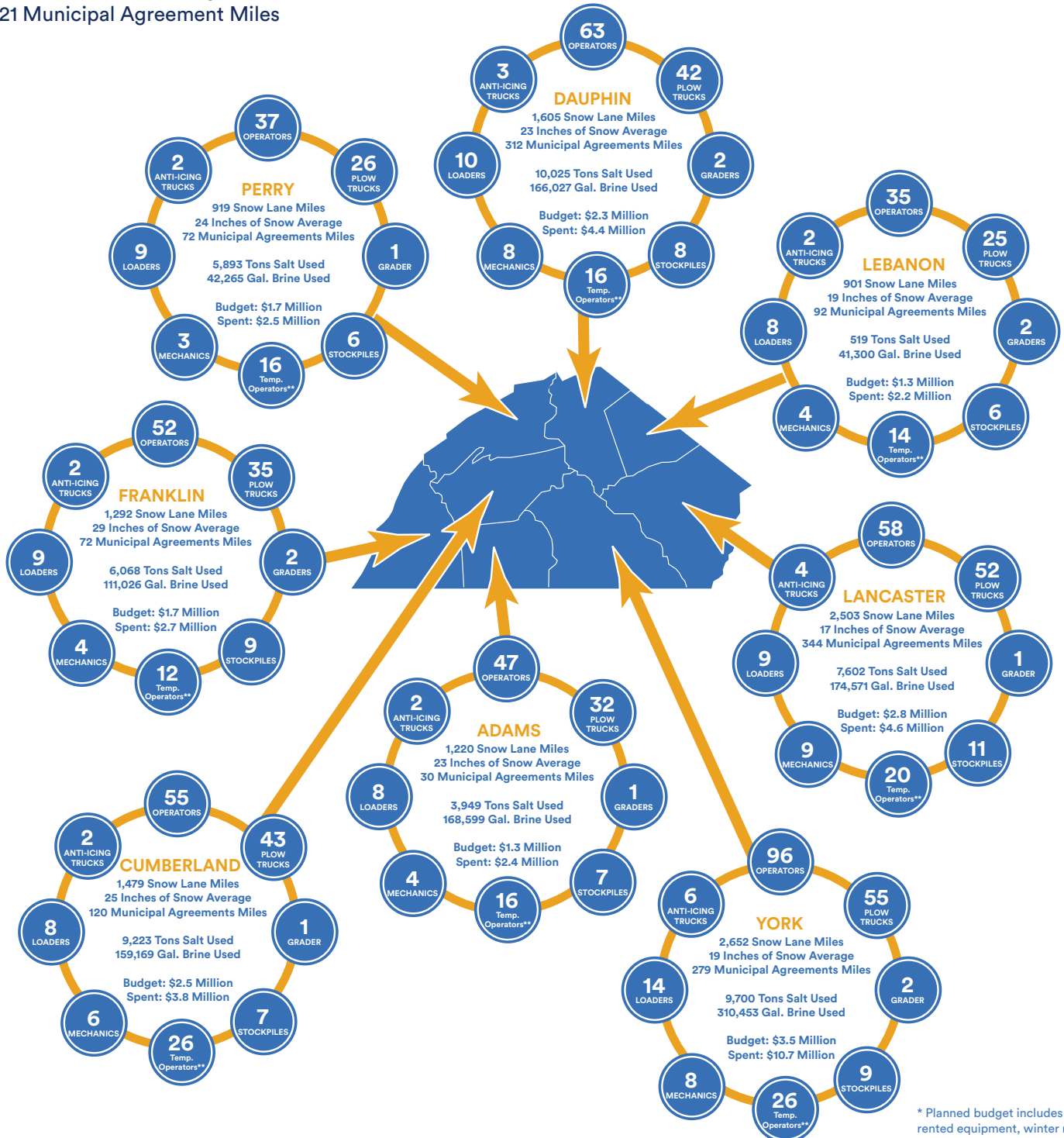
23 Inches of Snow (average)

1,321 Municipal Agreement Miles

Salt Used Last Winter: 52,979 Tons

Brine Used Last Winter: 1,183,868 Gallons

Anti-skid Used Last Winter: 27,762 Tons



\* Planned budget includes personnel, rented equipment, winter materials and municipal agreements. Budget may change through season depending on needs.

\*\* Anticipated Temporary Operators

\*\*\*Budget spent 2024-2025 winter

Each county's budget numbers are rounded up. District totals are calculated using actual total number and rounded up.

**DISTRICT 8 OFFICE**

2140 Herr Street  
Harrisburg, PA 17103  
717-787-6653

**ADAMS COUNTY OFFICE**

1185 Fairfield Rd.  
P.O. Box 3248  
Gettysburg, PA 17325  
717-334-3155

**CUMBERLAND COUNTY OFFICE**

40 Army Heritage Drive  
Carlisle, PA 17013  
717-243-5414

**DAUPHIN COUNTY OFFICE**

2140 Herr Street  
Harrisburg, PA 17103  
717-787-5391

**FRANKLIN COUNTY OFFICE**

619 N. Franklin St.  
Chambersburg, PA 17201  
717-264-4171

**LANCASTER COUNTY OFFICE**

2105 Lincoln Highway East  
Lancaster, PA 17602  
717-299-7621

**LEBANON COUNTY OFFICE**

1445 Cumberland Street  
Lebanon, PA 17042  
717-450-2223

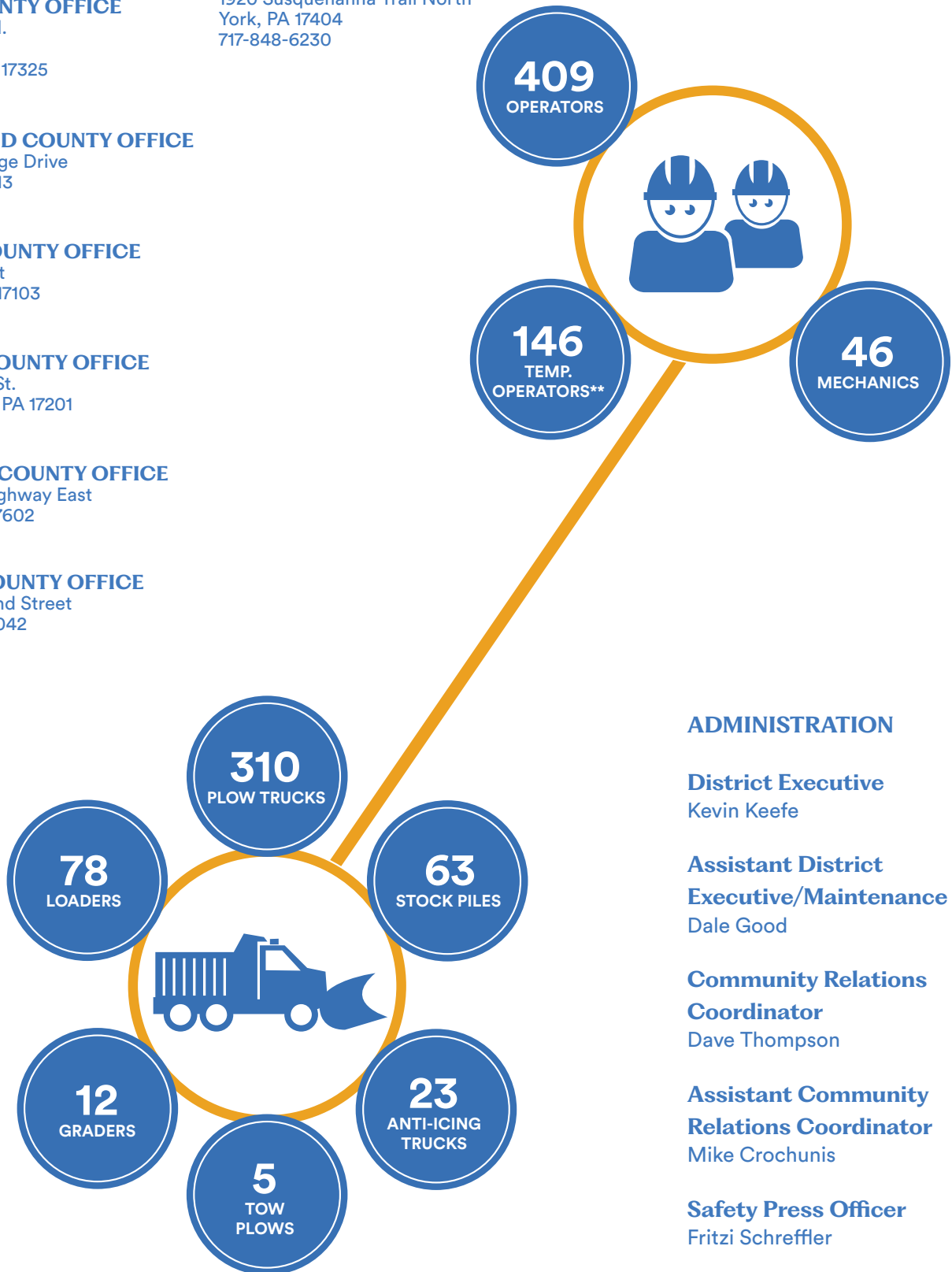
**PERRY COUNTY OFFICE**

413 West Main Street  
New Bloomfield, PA 17068  
717-582-2191

**YORK COUNTY OFFICE**

1920 Susquehanna Trail North  
York, PA 17404  
717-848-6230

**DISTRICT 8 TOTALS**



**ADMINISTRATION**

**District Executive**  
Kevin Keefe

**Assistant District Executive/Maintenance**  
Dale Good

**Community Relations Coordinator**  
Dave Thompson

**Assistant Community Relations Coordinator**  
Mike Crochunis

**Safety Press Officer**  
Fritzi Schreffler

\*\* Anticipated Temporary Operators

# DISTRICT 9

Winter Budget: \$20.9 Million\*

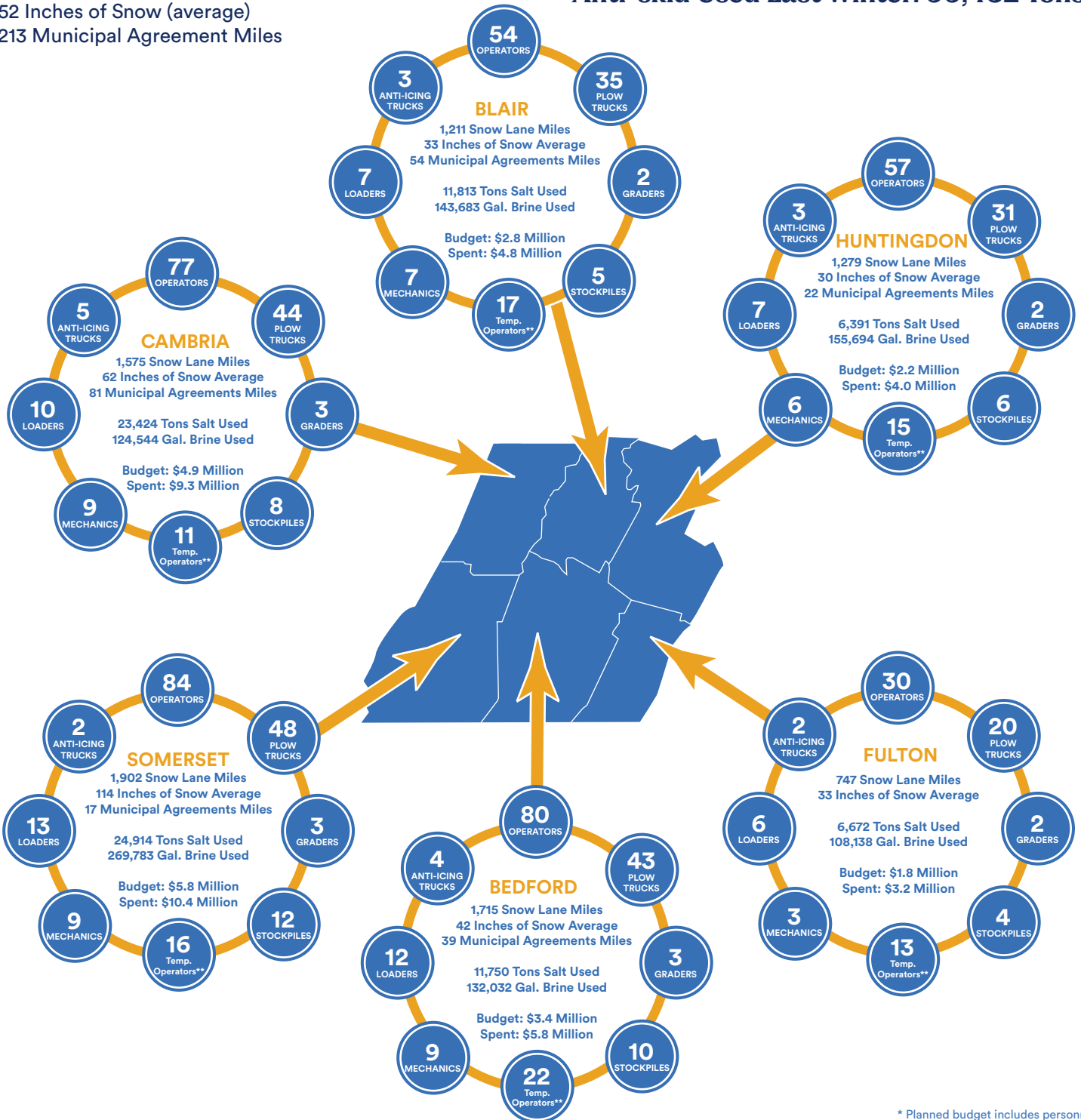
Spent Last Winter: \$37.5 Million\*\*\*

8,431 Snow Lane Miles  
52 Inches of Snow (average)  
213 Municipal Agreement Miles

Salt Used Last Winter: 84,694 Tons

Brine Used Last Winter: 933,874 Gallons

Anti-skid Used Last Winter: 99,432 Tons



\* Planned budget includes personnel, rented equipment, winter materials and municipal agreements. Budget may change through season depending on needs.

\*\* Anticipated Temporary Operators

\*\*\* Budget spent 2024-2025 winter

Each county's budget numbers are rounded up. District totals are calculated using actual total number and rounded up.

**DISTRICT 9 OFFICE**

1620 North Juniata Street  
Hollidaysburg, PA 16648  
814-696-7250

**BEDFORD COUNTY OFFICE**

630 East Penn Street  
Bedford, PA 15522  
814-623-6144

**BLAIR COUNTY OFFICE**

1598 North Juniata Street  
Hollidaysburg, PA 16648  
814-696-7270

**CAMBRIA COUNTY OFFICE**

4595 Admiral Peary Highway  
Ebensburg, PA 15931  
814-472-7100

**FULTON COUNTY OFFICE**

22907 Great Cove Road  
McConnellsburg, PA 17233  
717-485-3816

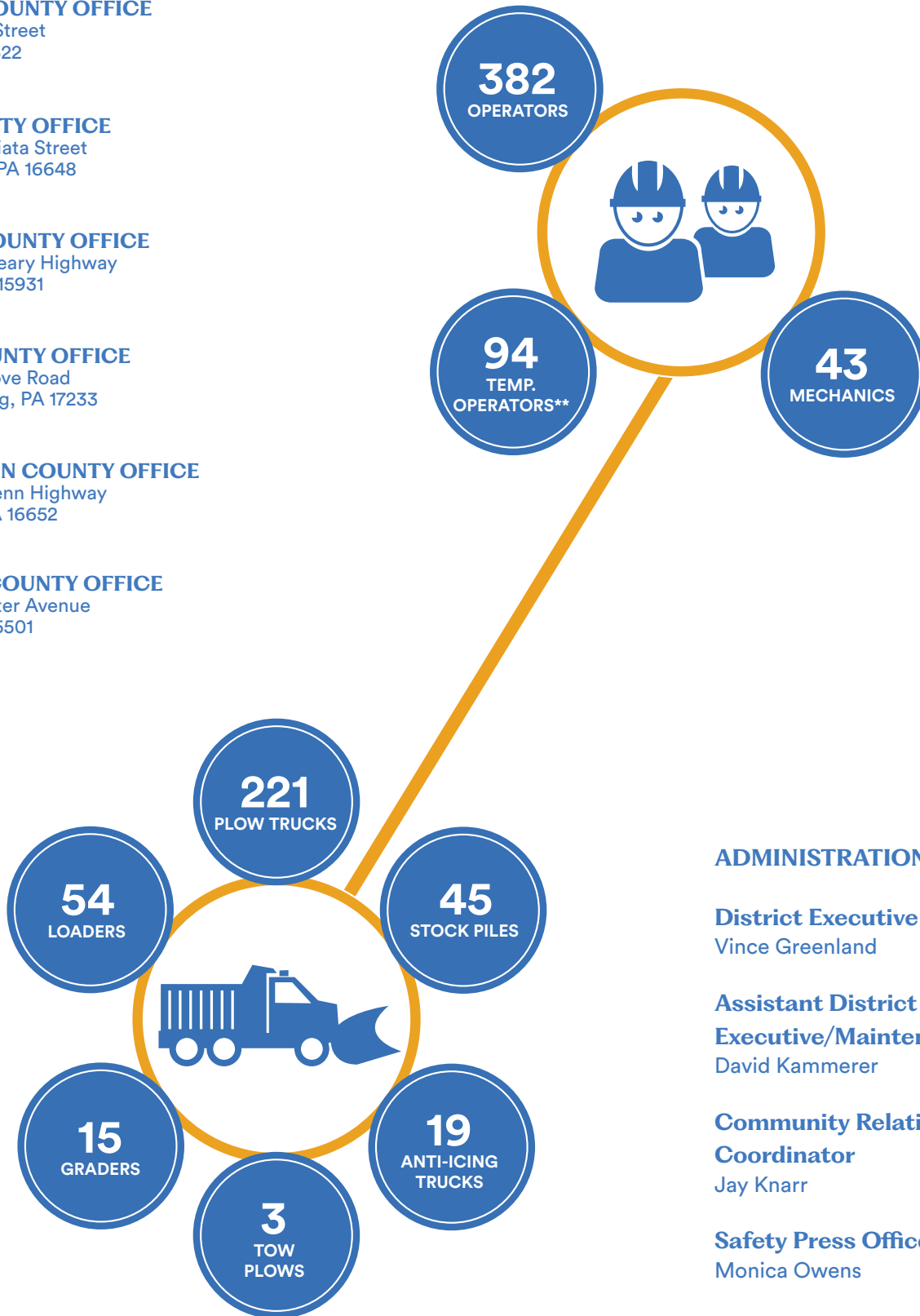
**HUNTINGDON COUNTY OFFICE**

8763 William Penn Highway  
Huntingdon, PA 16652  
814-643-0150

**SOMERSET COUNTY OFFICE**

1312 North Center Avenue  
Somerset, PA 15501  
814-445-7905

**DISTRICT 9 TOTALS**



**ADMINISTRATION**

**District Executive**  
Vince Greenland

**Assistant District Executive/Maintenance**  
David Kammerer

**Community Relations Coordinator**  
Jay Knarr

**Safety Press Officer**  
Monica Owens

\*\* Anticipated Temporary Operators

# DISTRICT 10

Winter Budget: \$16.6 Million\*

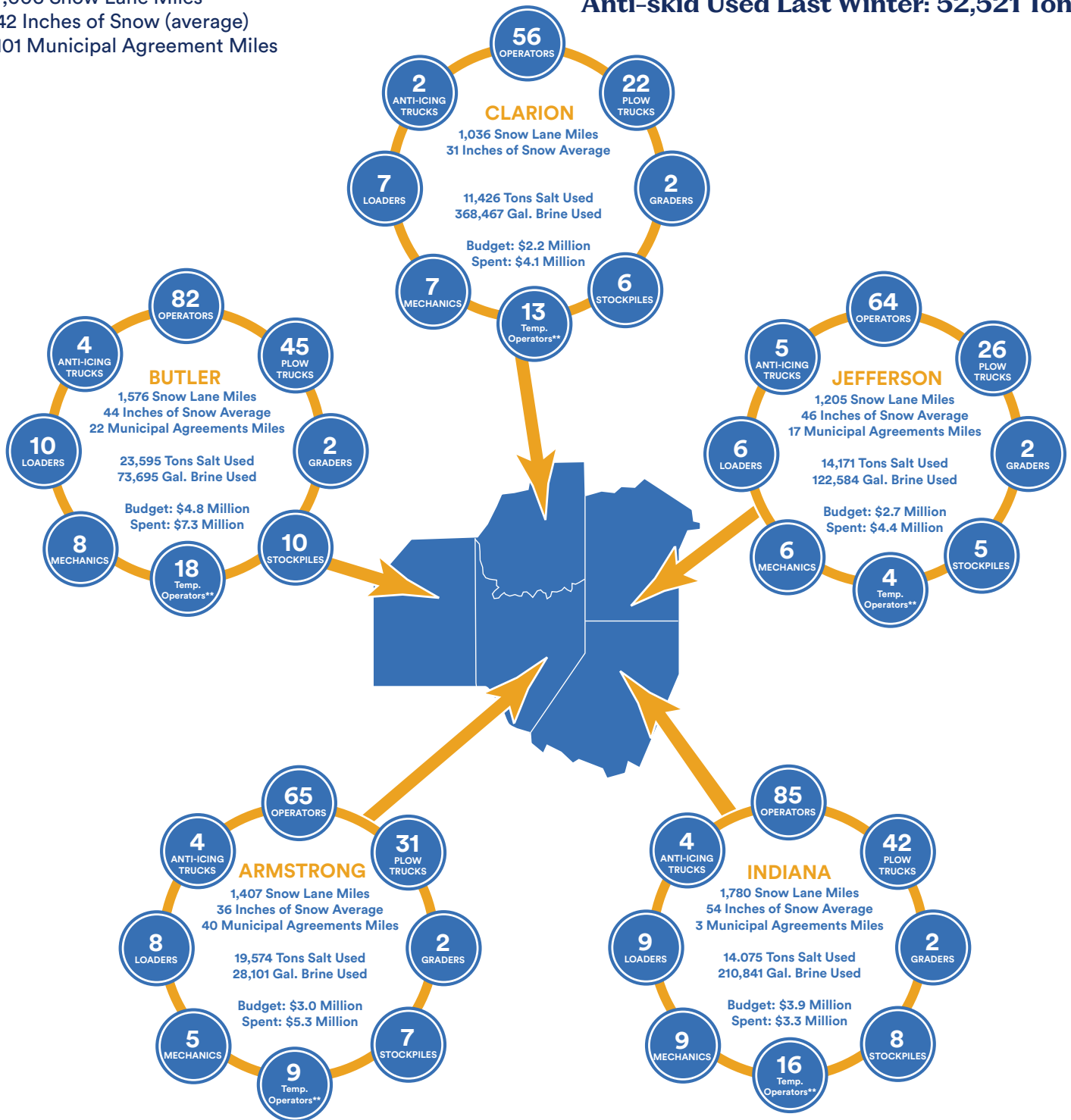
Spent Last Winter: \$27.3 Million\*\*\*

7,006 Snow Lane Miles  
42 Inches of Snow (average)  
101 Municipal Agreement Miles

Salt Used Last Winter: 82,841 Tons

Brine Used Last Winter: 838,051 Gallons

Anti-skid Used Last Winter: 52,521 Tons



\* Planned budget includes personnel, rented equipment, winter materials and municipal agreements. Budget may change through season depending on needs.

\*\* Anticipated Temporary Operators

\*\*\*Budget spent 2024-2025 winter

Each county's budget numbers are rounded up. District totals are calculated using actual total number and rounded up.

**DISTRICT 10 OFFICE**

2550 Oakland Ave.  
Indiana, PA 15701  
724-357-2800

**ARMSTRONG COUNTY OFFICE**

504 S. Water St.  
Kittanning, PA 16201  
724-543-1811

**BUTLER COUNTY OFFICE**

351 New Castle Road  
Butler, PA 16001  
724-284-8800

**CLARION COUNTY OFFICE**

21057 Paint Boulevard  
Shippensburg, PA 16254  
814-226-8200

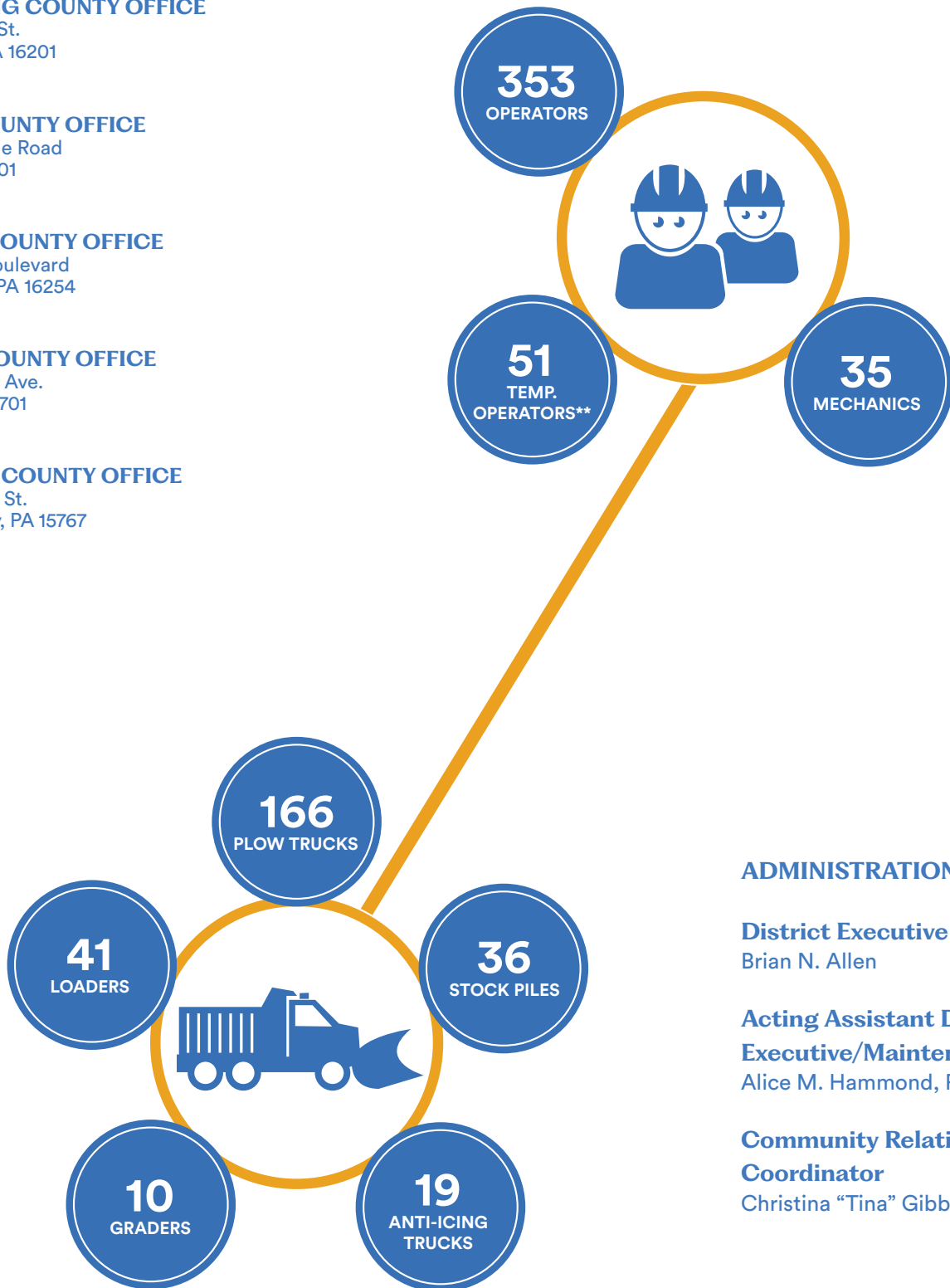
**INDIANA COUNTY OFFICE**

2550 Oakland Ave.  
Indiana, PA 15701  
724-357-2817

**JEFFERSON COUNTY OFFICE**

205 Witherow St.  
Punxsutawney, PA 15767  
814-938-6300

**DISTRICT 10 TOTALS**



**ADMINISTRATION**

**District Executive**  
Brian N. Allen

**Acting Assistant District Executive/Maintenance**  
Alice M. Hammond, P.E.

**Community Relations Coordinator**  
Christina "Tina" Gibbs

\*\* Anticipated Temporary Operators

# DISTRICT 11

Winter Budget: \$15.2 Million\*

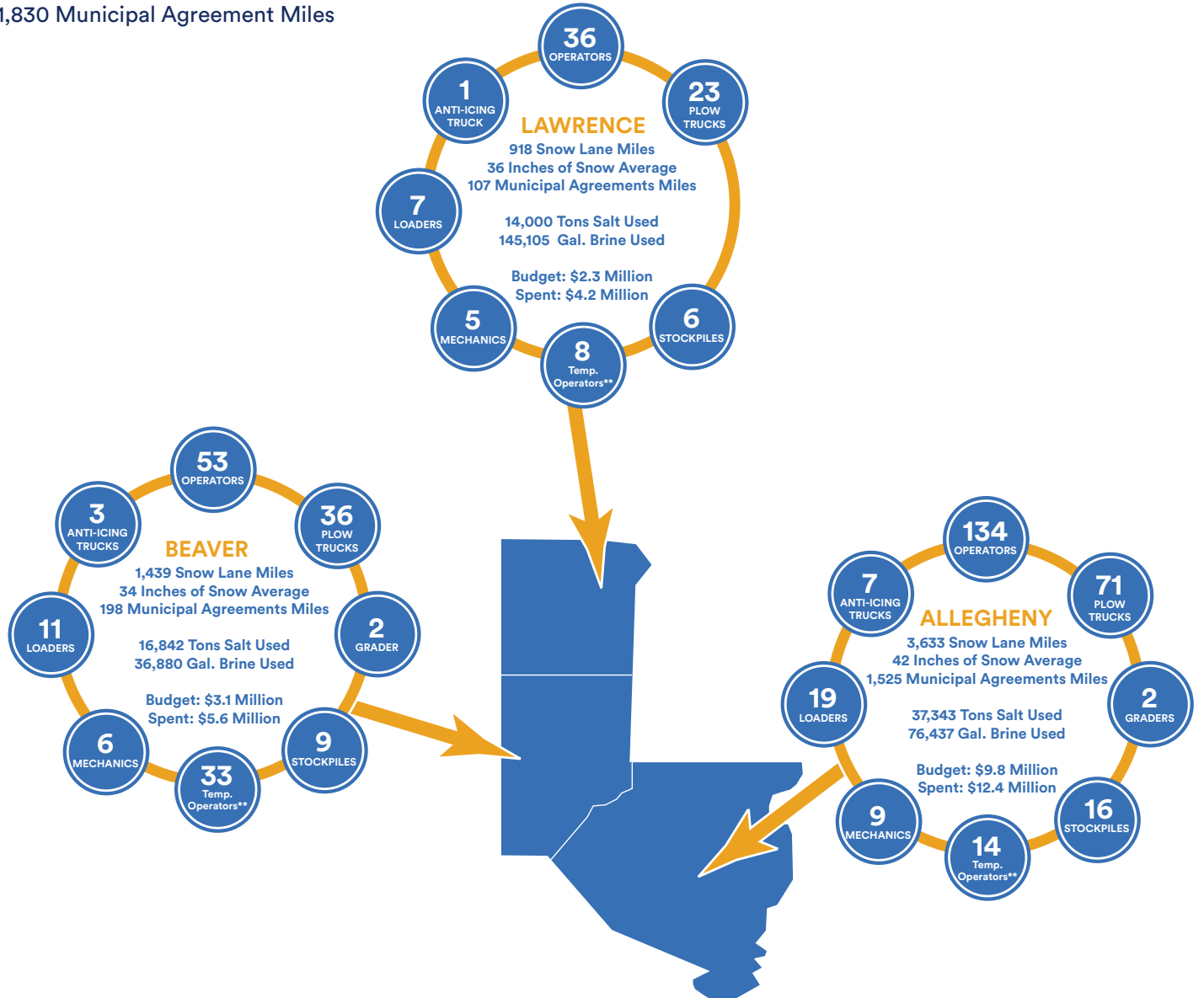
Spent Last Winter: \$22.3 Million\*\*\*

5,990 Snow Lane Miles  
 43 Inches of Snow (average)  
 1,830 Municipal Agreement Miles

Salt Used Last Winter: 48,601 Tons

Brine Used Last Winter: 258,423 Gallons

Anti-skid Used Last Winter: 5,947 Tons



\* Planned budget includes personnel, rented equipment, winter materials and municipal agreements. Budget may change through season depending on needs.

\*\* Anticipated Temporary Operators

\*\*\*Budget spent 2024-2025 winter

Each county's budget numbers are rounded up. District totals are calculated using actual total number and rounded up.

**DISTRICT 11 OFFICE**

45 Thoms Run Road  
Bridgeville, PA 15017  
412-429-5000

**ALLEGHENY COUNTY OFFICE**

51 Fox Chapel Road  
Pittsburgh, PA 15238  
412-781-3260

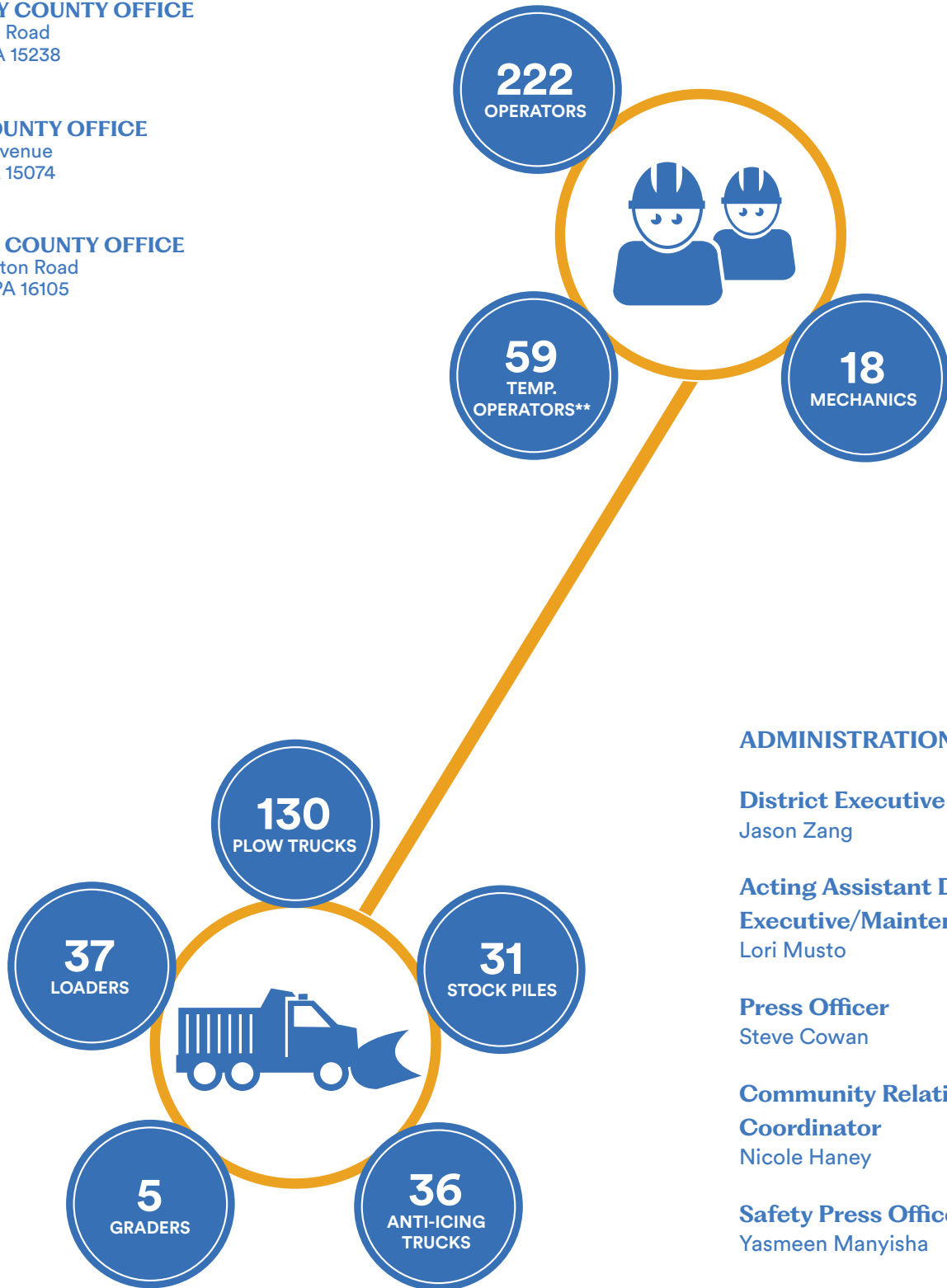
**BEAVER COUNTY OFFICE**

155 Stewart Avenue  
Rochester, PA 15074  
724-774-6610

**LAWRENCE COUNTY OFFICE**

1800 Wilmington Road  
New Castle, PA 16105  
724-656-3104

**DISTRICT 11 TOTALS**



**ADMINISTRATION**

**District Executive**  
Jason Zang

**Acting Assistant District Executive/Maintenance**  
Lori Musto

**Press Officer**  
Steve Cowan

**Community Relations Coordinator**  
Nicole Haney

**Safety Press Officer**  
Yasmeen Manyisha

\*\* Anticipated Temporary Operators

# DISTRICT 12

Winter Budget: \$18.1 Million\*

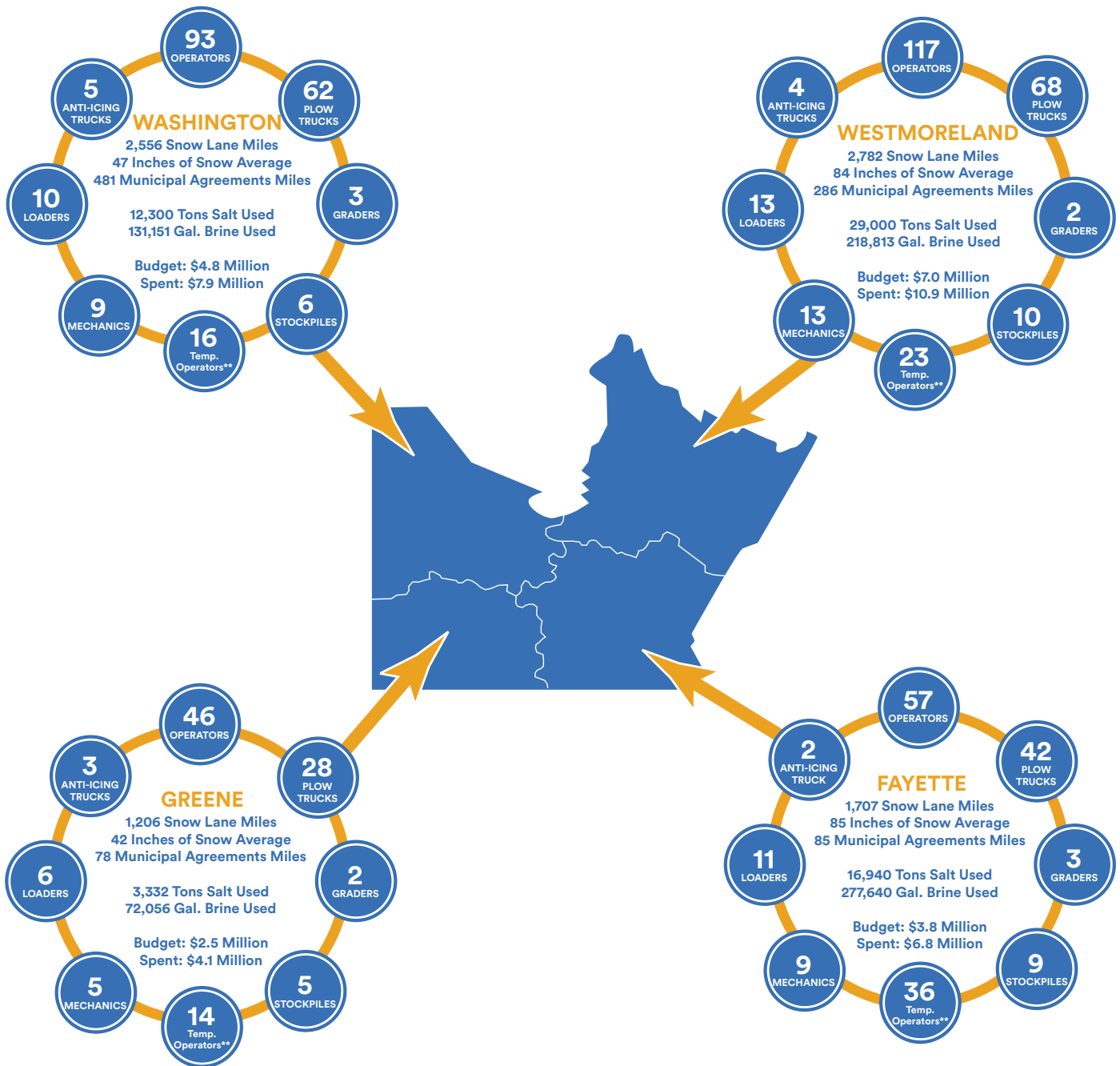
Spent Last Winter: \$29.7 Million\*\*\*

8,251 Snow Lane Miles  
84 Inches of Snow (average)  
929 Municipal Agreement Miles

Salt Used Last Winter: 61,572 Tons

Brine Used Last Winter: 699,662 Gallons

Anti-skid Used Last Winter: 42,075 Tons



\* Planned budget includes personnel, rented equipment, winter materials and municipal agreements. Budget may change through season depending on needs.

\*\* Anticipated Temporary Operators

\*\*\*Budget spent 2024-2025 winter

Each county's budget numbers are rounded up. District totals are calculated using actual total number and rounded up.

**DISTRICT 12 OFFICE**

825 N. Gallatin Ave. Ext.  
Uniontown, PA 15401  
724-439-7315

**FAYETTE COUNTY OFFICE**

825 N. Gallatin Ave. Ext.  
Uniontown, PA 15401  
724-439-7470

**GREENE COUNTY OFFICE**

129 Jefferson Road  
Waynesburg, PA 15370  
724-627-6131

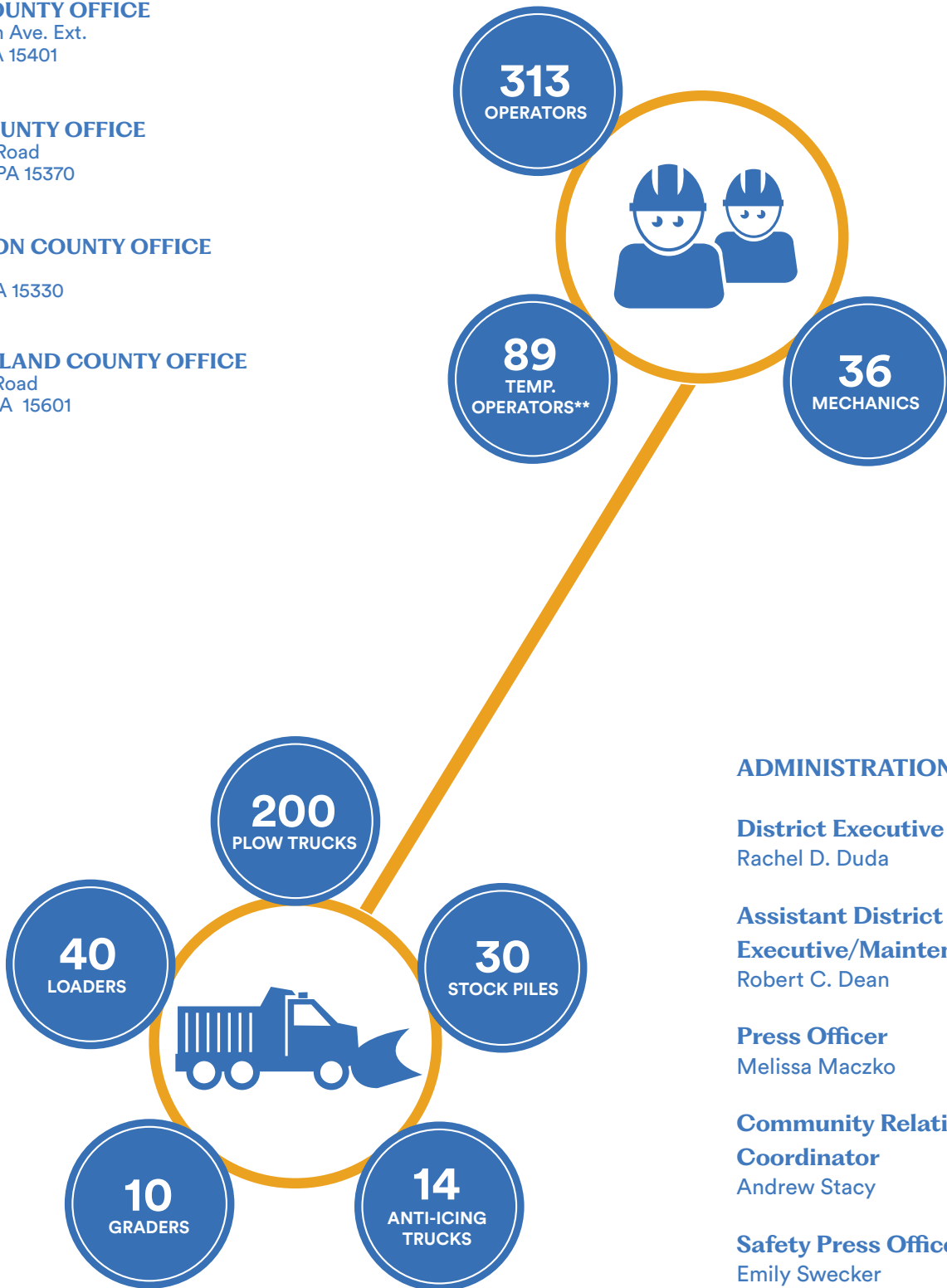
**WASHINGTON COUNTY OFFICE**

170 Route 519  
Eighty Four, PA 15330  
724-223-4480

**WESTMORELAND COUNTY OFFICE**

144 Donohoe Road  
Greensburg, PA 15601  
724-832-5387

**DISTRICT 12 TOTALS**



**ADMINISTRATION**

**District Executive**

Rachel D. Duda

**Assistant District**

**Executive/Maintenance**

Robert C. Dean

**Press Officer**

Melissa Maczko

**Community Relations**

**Coordinator**

Andrew Stacy

**Safety Press Officer**

Emily Swecker

\*\* Anticipated Temporary Operators



Pennsylvania  
**Department of Transportation**