

Special Point Examination

Study Guide



Pennsylvania
Department of Transportation

Table of Contents

I: How Did I Get Here?	2
II: How Points Add Up	2
III: Safe Driving Tips and Information.	8
IV: Making Safe Driving Decisions.	12
V: Summary: Protecting Your Driving Privilege	17
VI: Test Procedures	18

I. How Did I Get Here?

About the Special Point Examination

If you have six (6) or more points on your driving record for the first time, Pennsylvania law states you must take and pass a written Special Point Exam or attend Driver Improvement School. You must pass this exam within 30 days of notification by PennDOT to keep your driving privilege. The exam tests your knowledge of information and concepts contained in this study guide. PennDOT's goal is to help you improve your driving to avoid future violations.

Steps you must take:

1. Study the information in this guide; review and answer the sample questions to test your knowledge.
2. Schedule your exam at www.pa.gov/dmv or by calling 717-412-5300 and have the following documents with you when you report for the exam:
 - Official Notification Letter and/or Restoration Requirement Letter
 - Valid or expired driver's license or other acceptable proof of identification
3. Take and successfully pass the exam.
4. Obey the law, make better driving decisions, and drive safely.

Only you can earn your way out of points on your license!

II. How Points Add Up

Pennsylvania Driving Laws

The Pennsylvania Vehicle Code sets rules for obtaining a driver's license. It also defines violations, points for violations, and sanctions. **Sanctions** include exams, hearings, attendance of a Driver Improvement School class and suspension of driving privilege.

PennDOT administers the rules established by law. PennDOT does not have the authority to change the penalties imposed by law for individuals committing violations.

The Pennsylvania Point System

PennDOT maintains detailed records for all drivers convicted of violations in Pennsylvania, whether or not they possess a PA driver's license.

Records show that drivers who must take the Special Point Examination typically have two, 3-point violations. Speeding is the most common violation. For speeding violations, points range from two (2) to five (5), depending on the number of miles per hour (mph) traveled above the posted speed limit. For example, driving six (6) to 10 mph over the posted speed limit results in two (2) points on your driving record, and driving 11 to 15 mph over results in three (3) points. Any driver in PA who acquires six (6) or more points for the first time, regardless of the type of violation, is required by law to take a Special Point Examination or attend a Driver Improvement School (DIS).

The chart below shows the most common violations and the number of points added to a driver's record for each violation committed:

VIOLATION	VEHICLE CODE	NUMBER OF POINTS
Exceeding maximum speed	3362	2 to 5
Failure to stop for a red light	3112(a)(3)(i)	3
Failure to stop for stop sign	3323(b)	3
Driving too fast for conditions	3361	2
Improper passing	3307	3
Failure to yield	3322	3

• • •

Two years after getting his license, Joe Driver was convicted of his first violation, speeding 12 mph above the posted speed limit. PennDOT added three (3) points to his record.

Six months later, Joe failed to yield at a YIELD sign and PennDOT added three (3) more points to his record. Because Joe reached six (6) points on his driving record, PennDOT sent him a written notice to take a Special Point Examination or attend Driver Improvement School.

• • •

This example shows how Joe Driver reached six (6) points and why he was required to take the Special Point Examination or attend Driver Improvement School..

If Joe Driver does not take and pass the Special Point Examination or pass Driver Improvement School within 30 days, PennDOT will send a notice to him telling him that his driving privilege will be suspended in 30 days. If he still does not take the exam or pass Driver Improvement School, his driving privilege will remain suspended until he takes and passes the exam or completes Driver Improvement School and pays a restoration fee.

Consequences of Your Point Total: Exams, Hearings, Driver Improvement School and Suspensions

PennDOT takes corrective action based on violations and point totals. (The next section of the study guide explains how to reduce your point total.) There are three categories of sanctions:

Examinations

Examinations include the **Special Point Examination**, required when a driver's record reaches six (6) or more points for the first time. Drivers who receive a Special Point Examination or Driver Improvement School notification letter have 30 days, from the date of the notification letter, to pass the exam. Drivers who pass the Special Point Exam within 30 days of notification receive a two (2) point credit on their driver records. Drivers who complete the Driver Improvement School will receive a four (4) credit. PennDOT will suspend the driving privileges of drivers who do not take and pass the exam within 30 days of notification until they pass the exam or complete Driver Improvement School.

AVOID THE SUSPENSION HOLE

If you do not take and pass the Special Point Examination or complete Driver Improvement School within 30 days of notification, PennDOT will begin the process of suspending your driving privilege. If you are convicted of driving while suspended, PennDOT will suspend your driving privilege for one year.

A second type of examination, the **Special On-Road Driver's Examination**, may be required when a driver's record is reduced below six (6) points and then for a second or subsequent time reaches six (6) or more points, or a driver is convicted of a high speed violation.

Departmental Hearings and Driver Improvement School (DIS)

A **Departmental Hearing** requires a driver to meet with a PennDOT Examiner. Drivers receive a written notice informing them of the hearing requirement and possible outcome if a hearing is not scheduled. The Pennsylvania Vehicle Code defines several types of hearings and possible outcomes, depending on a driver's violation(s), point total, and driving record:

- A **Departmental Hearing and attendance of Driver Improvement School (DIS)** occurs when a driver's record is reduced below six (6) points and then because of additional violations and points, again reaches six (6) or more points for a second or subsequent time. Possible penalties include a Knowledge Test and Special On-Road Driver's Examination or a 15 or 30 day suspension of driving privilege. A driver who is convicted of another point violation within 12 months of passing the Special Point Examination will be required to attend a Departmental Hearing and attend Driver Improvement School.

FAILING TO ATTEND A DEPARTMENTAL HEARING AND DRIVER IMPROVEMENT SCHOOL WILL RESULT IN A SUSPENSION OF YOUR DRIVING PRIVILEGE UNTIL THE REQUIREMENTS HAVE BEEN SUCCESSFULLY COMPLETED.

- **A High Speed Hearing and attendance of Driver Improvement School** occurs when a driver is convicted of traveling 31 mph or more over the posted speed limit. Possible outcomes include a Knowledge Test and Special On-Road Driver's Examination or a 15-day suspension of driving privilege. A driver under age 18, traveling 26 mph or more over the posted speed limit, will receive an automatic suspension of at least 90 days.

FAILING TO ATTEND A HIGH SPEED HEARING AND ATTEND DRIVER IMPROVEMENT SCHOOL WILL RESULT IN THE SUSPENSION OF YOUR DRIVING PRIVILEGE UNTIL THE REQUIREMENTS HAVE BEEN SUCCESSFULLY COMPLETED.

Driver Improvement School

PennDOT provides a Driver Improvement School course for drivers whose record has an initial accumulation of six (6) points for the first time, a second and subsequent accumulation of six (6) points, or has a conviction for excessive speeding, (31 mph over the posted speed limit), as outlined in the PA Vehicle Code, 75 Pa.C.S. § 1538.

License Suspensions

A suspension of driving privilege, commonly known as a **License Suspension**, is imposed when a driver fails to attend an exam, Driver Improvement School or hearing as ordered, when a driver's record reaches 11 or more points, or when a driver is convicted of driving under suspension. Also, convictions for unsafe driving practices, such as those listed below result in an automatic suspension:

- Failure to stop for a school bus with flashing red lights
- Operating a motor vehicle while under the influence of drugs
- Exceeding the speed limit in an active work zone by 11 miles per hour or more
- Fleeing from a police officer
- Racing on highways

REMEMBER: IT IS AGAINST THE LAW TO DRIVE WHILE YOUR DRIVING PRIVILEGE IS SUSPENDED.

If your driving privilege is suspended, it is very important to surrender your driver's license or acknowledge your suspension. Not driving while suspended is important, but not the only thing you need to do. You must acknowledge the suspension!

Point Removal for Safe Driving and Sanction Compliance

As required by law, PennDOT imposes sanctions on drivers who commit violations. The law also provides drivers with ways to reduce the number of points on their records. The only way to reduce point totals are listed in the chart below.

Sample Situations When Points are Removed from a Driver's Record

SITUATION	POINTS REMOVED
A driver passes the Special Point Examination within 30 days of notification by PennDOT, or attends and completes the Driver Improvement School for the first accumulation of six (6) points will have two (2) points deduction from the record, for completion of DIS four (4) points will be removed. <u>Exception:</u> If the driving privilege is suspended or pending suspension, the two (2) point deduction would be applied after serving the suspension.	2 or 4
When a person's record shows for the second or subsequent time as many as six (6) points, and that person attends a Driver Improvement School and satisfactorily completes the requirements of the School.	2
A person drives 12 consecutive months (from the date of the last violation) without a violation that results in points, license suspension, or revocation	3

When a driver successfully passes the Special Point Examination within 30 days of notification, or attends and completes the Driver Improvement School for the second or subsequent six (6) or more point accumulation, PennDOT will remove two (2) points from the driver's record. If the driver successfully completes DIS for the first accumulation of six (6) points, PennDOT will remove four (4) points from the driver's record. If the driver continues to drive violation-free, he or she will eventually regain a "clean" driving record of zero (0) points. Once a driving record is reduced to and remains at zero (0) points for 12 consecutive months, any further accumulation of points is treated as the first accumulation of points.

Safe driving earns you a point-free record – it's up to you!

This example shows how Jane Driver reduced the points on her driver's record through safer driving:

● ● ●

Five years after getting her driver's license, Jane Driver was convicted of failure to stop for a red light. PennDOT added three (3) points to Jane's driving record. Since the violation, Jane drove safely with no further violations. Once 12 months passed since the violation date, PennDOT removed three (3) points from her driving record. Jane Driver now has no points on her driving record.

● ● ●

Beware!

Common Misunderstandings about the Pennsylvania Point System

Many drivers are unaware of how their actions will affect their driving privileges. Below are some common misunderstandings:

YOU MIGHT SAY...	...BUT REMEMBER:
"I'll worry about the Special Point Exam later."	You should act now! You must pass the Special Point Examination or complete Driver Improvement School within 30 days of notification from PennDOT. If not, PennDOT will suspend your driving privilege until you pass the exam or complete Driver Improvement School. Driving under suspension is against the law and could result in a one-year suspension. Pass the exam or complete Driver Improvement School and avoid the suspension hole!
"I passed the Special Point Exam, now what?"	If you pass the Special Point Examination within 30 days of notification, PennDOT will remove two (2) points from your driver's record or four (4) points for completing DIS. But remember, just one more violation within the next 12 months will trigger a Departmental Hearing, and the requirement to attend a Driver Improvement School or a possible 15-day suspension!
"But I thought I already served my suspension!"	If your driving privilege is suspended, you must surrender your driver's license to PennDOT. Driving under suspension is against the law, whether you have surrendered your license or not. Driving under suspension could result in additional suspensions.
"I'm moving, do I need to notify PennDOT?"	Yes! By law, you must notify PennDOT of your new address within 15 days of moving. Call PennDOT or file a change of address at PennDOT's website www.pa.gov/dmv . Providing a forwarding address to the U.S. Postal Service does not relieve you of your obligation to notify PennDOT directly – the U.S. Post Office will not forward PennDOT correspondence.

Finally, it is also important to note, insurance companies have their own standards for how long convictions are considered when setting insurance rates. Safe driving will save you money, and not just on your insurance rates, but in gas, wear and tear on your vehicle, avoiding fines and other ways. Insurance companies also have a separate point system that does not match the PennDOT point system. Please contact your insurance provider for additional information on their point system.

III. Safe Driving Tips and Information

In 2020, there were 70,856 reportable traffic crashes in Pennsylvania. These crashes claimed the lives of 772 people and injured another 43,123 people.

On Average in Pennsylvania:

- Each day 194 reportable traffic crashes occurred (about 8 crashes every hour).
- Each day 2 persons were fatally injured in reportable traffic crashes (one fatality every 12 hours).
- Each day 118 persons were injured in reportable crashes (about 5 injuries every hour).

Based on Pennsylvania's 2020 population (793,196 people):

- 1 out of every 181 people was involved in a reportable traffic crash.
- 1 out of every 16,571 people was fatally injured in a reportable traffic crash.
- 1 out of every 297 people was injured in a reportable traffic crash.

FACT

Studies show that speeding is a contributing factor in more than 47 percent of all fatal crashes.

Speeding and Aggressive Driving

Thousands of drivers die each year in speed-related crashes in the U.S. Speeding reduces a driver's ability to handle curves and move around obstacles. It takes longer to stop a vehicle that is moving at higher speeds. Do your part to save lives by obeying posted speed limits.

Aggressive drivers change lanes frequently, tailgate other drivers, speed, and become frustrated with other drivers. This combination can be dangerous and even deadly. Plan ahead so that you do not feel pressured to drive aggressively. Here are some helpful tips when you see aggressive drivers:

- Let aggressive drivers pass you; do not challenge aggressive drivers by speeding up
- Do not make eye contact with aggressive drivers
- Ignore gestures and do not gesture back
- If necessary, call the police, if you can do it safely
- If an aggressive driver follows you, drive to the nearest police station

Cell Phones and Other Driving Distractions

Drivers can become distracted in many ways. Cell phone use is a very common distraction. Dialing, talking, texting and listening hurt your ability to focus on the road. Hands-free cell phones may seem safer, but recent studies show they are not. These studies show that conversation distracts your brain from the task of driving and slows your reactions to hazards.

FACT

Studies show the key to driving safely is **keeping your eyes on the road.**

Research shows that if you text message while driving, your risk of crashing increases by more than 20 times compared to non-distracted drivers. At 55 mph, a texting driver can travel the length of a football field without looking at the roadway. Pennsylvania adopted a law, which became effective on March 8, 2012, banning any driver from texting while driving. The penalty is a \$50 fine, plus costs.

Here are some more facts about risks of cell phone use while driving:

- Dialing a cell phone makes you 2.8 times more likely to crash than a non-distracted driver.
- Talking and listening on a cell phone makes you 1.3 times more likely to crash than a non-distracted driver.
- Reaching for a cell phone or other electronic device makes you 1.4 times more likely to crash than a non-distracted driver.

Remember: *Anything* that takes your focus from the road is dangerous. There are many more distractions inside and outside the vehicle than just a cell phone. Driving is not a time to multi-task – lives depend on you remaining focused on the task of driving and doing so safely.

Distracted drivers often do not react to dangerous conditions until it is too late. Even the most alert and attentive drivers take about one and a half seconds to recognize and react to a hazard – at 55 mph, you travel about 120 feet in that time. Be safe, plan ahead, and focus on the task of driving when behind the wheel.

Driving Under the Influence of Alcohol or Drugs

The penalties for driving while under the influence of alcohol or drugs are severe. In Pennsylvania, if you are of legal drinking age (21 or older), you are considered to be driving under the influence (DUI) if your blood alcohol count (BAC) is .08 or higher. You also may be convicted of DUI at lower BAC levels, if police stop you for driving erratically.

Pennsylvania's **Implied Consent** law says that just by being licensed to drive in Pennsylvania, you have agreed to take a chemical test, if the police arrest you for driving while under the influence of alcohol or drugs. If you refuse to take one or more chemical tests of breath or blood, your driving privilege will be automatically suspended for a minimum of one year.

If you are under age 21, Pennsylvania's law prohibits the use of alcohol, and doing so can result in a DUI conviction.

Medications can also seriously affect your ability to drive safely. Talk to your doctor or pharmacist and follow all precautions when taking prescription drugs or over-the-counter medications. You can be convicted of DUI even if you are on prescribed medication.

FACT

Every 40 minutes and nearly 40 times a day, someone in the U.S. dies in an alcohol-related crash.

Seat Belts and Child Safety Seats

Seat belts save thousands of lives each year. They reduce injuries by preventing occupants from being thrown from the vehicle. By law, all drivers and front seat passengers in Pennsylvania must wear seat belts. Seat belts should fit snugly and properly over your shoulder and hips.

FACT

Drivers thrown from their vehicles in a crash are 25 times more likely to die.

By law, child seats must be properly installed for all children under the age of four (4). Children aged four (4) to under eight (8) must be buckled into an approved booster seat. Passengers between the ages of eight (8) and 18 must wear a seat belt, no matter where they ride in the vehicle.

Drowsy Driving

Some of the most deadly crashes occur when a driver falls asleep at the wheel. Even drowsy drivers have an increased crash risk. It takes longer to react and make decisions when you are tired. Make sure you are well rested before driving.

Tips for Young and New Drivers

Among all age groups, young drivers have the highest risk of being involved in and dying from a crash. Lower seat belt use, distracted driving and driving under the influence of alcohol all contribute to this increased risk.

Research also shows the more passengers in the car with a new driver, the greater the crash risk.

Young drivers can reduce their likelihood of crashes and injury by:

- Always wearing a seat belt
- Not using a cell phone or text messaging while driving
- Avoiding any amount of alcohol
- Traveling with a fewer number of passengers

FACT

Traffic crashes are the leading cause of death for teenagers in the U.S.

Tips for Older Drivers

About 15 percent of the U.S. population is age 65 or older. As people grow older, vision and hearing, physical agility, and intellectual skills important to safe driving may decline. Thus, older drivers are encouraged to:

- Attend special training events for older drivers
- Talk with family, partners, and friends about safe driving options
- Find a comfortable vehicle that fits their needs

- Self-assess their driving abilities over time
- Consult a driver rehabilitation specialist for a formal assessment
- Talk with their doctor about medical conditions that may affect driving

Overall, regular assessments of one's fitness to drive and open discussions with family and friends about mobility options will help older drivers make sound decisions concerning their transportation needs.

Special Driving Situations

Pennsylvania laws help make the roads safer. Avoid fines and do your part to keep yourself and other drivers safe.

Move Over Law

The Move Over Law, effective April 27, 2021, requires motorists to move into a lane that is not adjacent to an emergency response area and or disabled vehicle. An emergency response area is an area on or near a road where services are being provided by police, sheriffs, coroners, medical examiners, firefighters, fire police, fire marshals, rescue personnel, emergency medical service personnel, towing and recovery personnel, hazardous material response team members and/or highway construction and maintenance personnel. A disabled vehicle is a vehicle is in a traffic lane or on the side of a traffic lane and is clearly marked with at least two signal lamps, road flares, caution signs and/or any other traffic control device. If drivers cannot move over because of traffic or other conditions, they must reduce their speed to no more than 20 miles per hour less than the posted speed limit. In cases where law enforcement may not be present, the law allows road workers and emergency responders to report violations by motorists. Law enforcement may issue citations based on these reports. Failure to move over or slow down can result in a summary offense that carries a fine of up to \$500 for a first offense, \$1,000 for a second offense and \$2,000 for a third and subsequent offense. In addition, fines will be doubled for traffic violations occurring in work zone areas. **Any person convicted of a violation of this law will have 2 points assessed to their driving record.** If the violation of this law leads to the serious injury or death of another person, a 90-day license suspension will be imposed and a fine of up to \$1,000 could result. If the violation of this law leads to the serious injury of an emergency responder or a person in or near a disabled vehicle, a 6-month license suspension will be imposed and a fine of up to \$5,000 could result. If the violation of this law leads to the death of an emergency responder or a person in or near a disabled vehicle a 1-year suspension will be imposed and a fine of up to \$10,000 could result.

Headlight and Windshield Wiper Law

By law, any time you use your windshield wipers, you must turn on your headlights and taillights. Daytime running lights are not enough. Motorists who do not comply with the law could face a fine of \$25, but with fees and other associated costs, the penalty could approach \$100.

Snow and Ice Removal Law

Remove all snow and ice from your vehicle before driving. This is important for good visibility and safety. Snow or ice that falls from a moving vehicle can cause injury or death to pedestrians and other motorists. By Pennsylvania law, the operator of the vehicle from which the snow or ice came could face a fine of \$200 to \$1,000 for each offense.

Work Zones

Violations in work zones often carry heavier penalties including higher fines and driver's license suspensions. Fines will be doubled for traffic violations occurring in work zone areas. Also, remember that you must turn your headlights on when driving in an active work zone no matter what time of day. Daytime running lights are not enough.

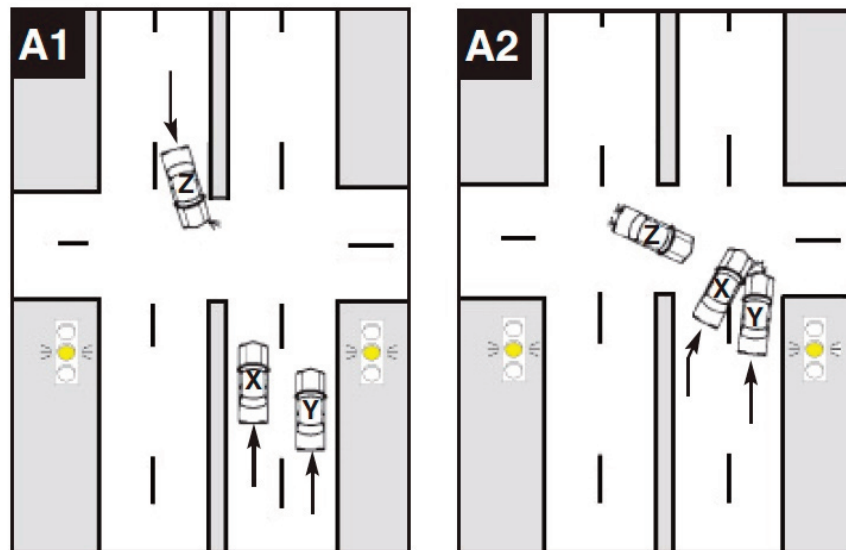
IV. Making Safe Driving Decisions

This section shows examples of situations that require you to make safe driving decisions. Making safer driving decisions will help you avoid crashes, violations and additional sanctions. Read each scenario and answer the question that follows. In each scenario, you are Driver X. Answers and explanations are on p. 16. The Special Point Examination includes similar scenarios that test your knowledge of safe driving practices.

EXAMPLE A

Look at the situation shown below in Diagrams A1 and A2.

Assume that you are **Driver X**.



Situation: You (Driver X) see a green light while coming to an intersection. Driver Z is coming to the intersection from the opposite direction. The light turns yellow, and Driver Z turns into the intersection. At the same time, you and Driver Y are hurrying to get through the intersection before the light turns red. Driver Z sees you coming and stops in the middle of the intersection. You swerve to the right to avoid hitting Driver Z. Driver Y crashes into you.

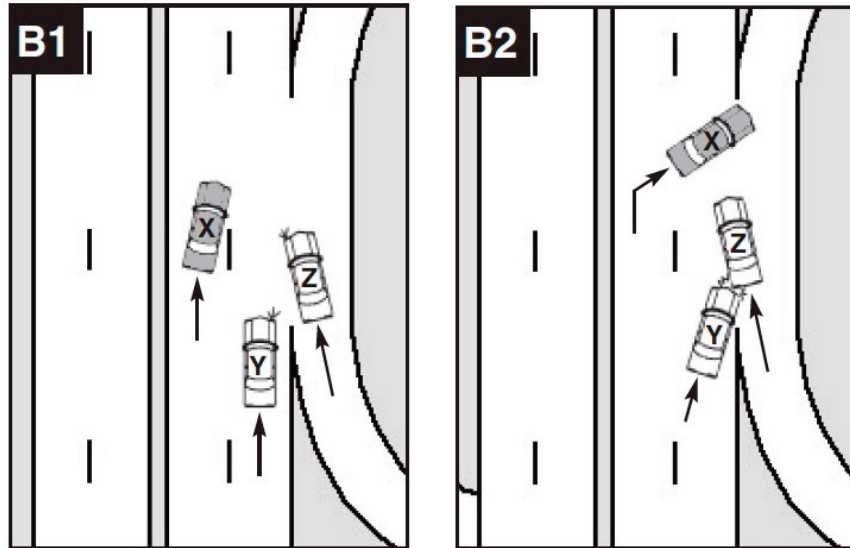
Question: TRUE or FALSE:

You should have decided to stop the moment the light turned yellow.

EXAMPLE B

Look at the situation shown below in Diagrams B1 and B2.

Assume that you are **Driver X**.



Situation: Driver Z is speeding up on an entrance ramp to the highway and has the left turn signal flashing. Driver Y wants to exit the highway and has the right turn signal flashing. You (Driver X) attempt to exit and turn sharply from the left lane toward the exit. Driver Z hits the brakes to keep from hitting you. Driver Y crashes into Driver Z.

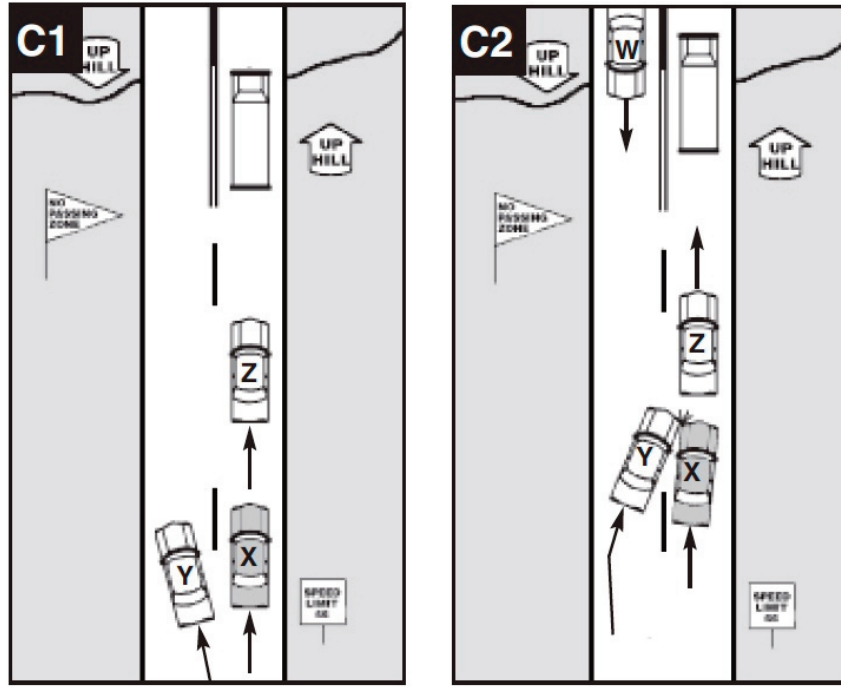
Question: TRUE or FALSE:

Your decision to pass in front of Drivers Z and Y to exit the highway was the most unsafe act in this situation.

EXAMPLE C

Look at the situation shown below in Diagrams C1 and C2.

Assume that you are **Driver X**.



Situation: You (Driver X), Driver Y, and Driver Z are following a truck uphill on a two-lane highway. Driver Y decides to try to pass you and Driver Z before the no passing zone begins near the top of the hill. Driver W appears suddenly at the top of the hill. By this time, Driver Y is in the left lane and you have narrowed the gap with Driver Z. Driver Y reacts to Driver W by trying to return to the right lane, but crashes into you.

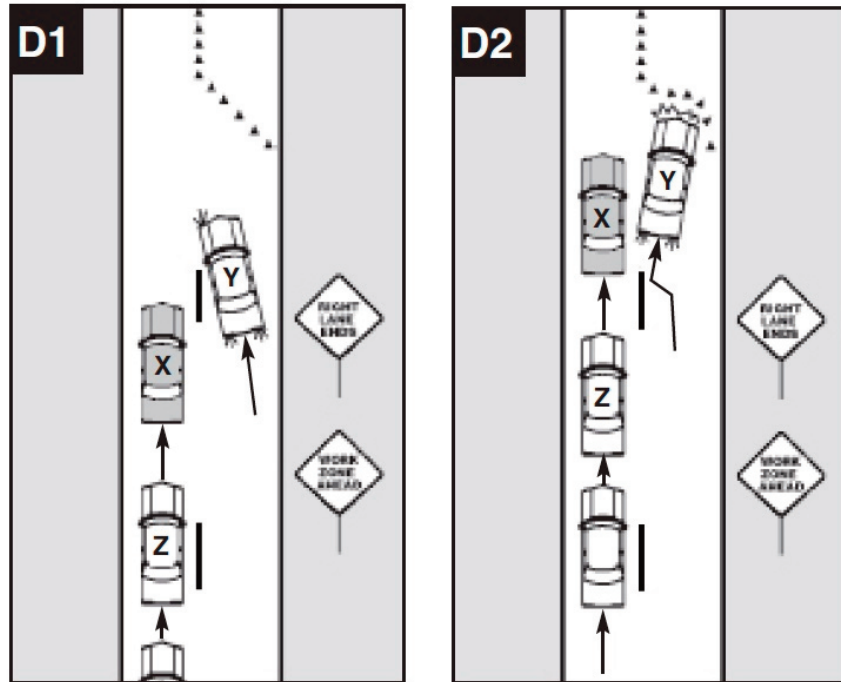
Question: TRUE or FALSE:

You acted safely in this situation.

EXAMPLE D

Look at the situation shown below in Diagrams D1 and D2.

Assume that you are **Driver X**.



Situation: Driver Y is traveling in the right lane and notices a work zone sign indicating that the right lane will end soon. You (Driver X) are traveling in the left lane about even with Driver Y. Driver Z is following closely behind you. Driver Y signals and turns toward the left lane, but puts on the brakes, seeing that you are not slowing down. You and Driver Z maintain your speed as the road narrows. Driver Y has no choice but to swerve back to the right and skids into the traffic cones that mark the lane closure.

Question: TRUE or FALSE:

Because Driver Z was following right on your bumper, the safest driving decision you could make was to maintain your speed as Driver Y tried to move in front of you.

Answers To Safe Driving Scenarios

EXAMPLE A: TRUE.

When you (Driver X) first saw the light turn yellow, you had not yet entered the intersection. Your choices were to “go for it” or to slow down and try to stop. This decision should have considered the movement of Driver Z **and** the fact that Driver Y in the lane next to you had you “boxed in.” There would be no room to maneuver if Driver Z turned. In this situation, “driving smart” means that you recognize at least two things that increase the chances of a crash. First, if you don’t stop when the light turns yellow, you and Driver Z will try to pass through the intersection before the light turns red. Second, the signal turning from green to yellow may lead Driver Z to assume that you will stop. Driver Z is more likely to make the turn and less likely to yield to you. This does not excuse the unsafe decision of Driver Z to turn across your path, but it shows how your decision to stop could have avoided the crash.

EXAMPLE B: TRUE.

Even though you (Driver X) escaped a crash, your unsafe and illegal decision increased the chances of a crash between Drivers Z and Y. You should have considered this before you decided to turn across the path of Driver Y. The example stresses the need to recognize possible traffic conflicts with any vehicles, not just your own. Although you managed to avoid a crash in this example, the next time may be different. Driver Z could speed up to avoid Driver Y and end up crashing into you. Think about these possibilities before a dangerous situation arises.

EXAMPLE C: FALSE.

Although Driver Y caused the crash, you (Driver X) could have been more aware of the situation and reacted accordingly. Once Driver Y began to pass, you could have slowed down to allow the person to return safely to your lane. Other drivers could have made safer decisions as well. Driver Y could have anticipated the no passing zone and waited for a safer place to pass. Driver W could have slowed down so that the other drivers would have more time to react. Driver Z could have sped up to allow more space for Driver Y. As this example shows, the chances of a crash are greatly reduced when all drivers work together to make safe driving decisions.

EXAMPLE D: FALSE.

Even though Driver Y made an unsafe driving decision, you (Driver X) contributed to the crash by deciding to maintain your speed. Although Driver Z was following close behind, you could have attempted to slow down carefully to allow Driver Y to pass safely. Monitor your surroundings and help other drivers avoid crashes through safer driving decisions. If all drivers work together, next time it could be you that is saved from a crash.

For more information on any of these topics, refer to the Pennsylvania Driver’s Manual or visit www.justdrivepa.org.

V. Summary: Protecting Your Driving Privilege

The previous sections provide information about Pennsylvania driving laws, the Pennsylvania Point System, and tips for safer driving. In summary, you should:

1

PASS THE SPECIAL POINT EXAMINATION.

Remember that you have 30 days from the date of notification from PennDOT to pass the Special Point Examination. Study the information in this guide to prepare for the exam.

2

UNDERSTAND THE PENNSYLVANIA POINT SYSTEM.

Learn the details of the Pennsylvania Point System to see how certain violations affect your driving privilege.

3

AVOID THE SUSPENSION HOLE.

The most common way that drivers earn multiple suspensions is by not responding to PennDOT correspondence. Pay attention to PennDOT letters and closely follow all instructions.

4

LEARN THE SAFE DRIVING TIPS.

Many crashes and fatalities occur because the driver was speeding, distracted, tired, and/or under the influence of drugs or alcohol. Pay attention to the safe driving tips. Learn from the example scenarios and make safe driving decisions.

5

DRIVE SAFELY AND EARN A POINT-FREE DRIVING RECORD.

You must pass the Special Point Examination because of your past violations. By passing the exam and continuing to drive safely, you can eventually earn your way out of the point system.

VI. Test Procedures

How to Schedule Your Examination Appointment

The Special Point Exam is given by appointment only. You can make an appointment in one of two ways:

1. Schedule your exam online at:

www.pa.gov/dmv

or

2. Call **717-412-5300**

DRIVERS WITH SPECIAL NEEDS

If you require a version of the examination that is spoken, offered in Spanish, given using sign language, or given in other languages contact PenDOT immediately to make an appointment and discuss accommodations:

PHONE: 1-717-412-5300

TTY Callers: Please dial 711 to reach us

Examination Procedures

Arrive at the examination location 15 minutes early. A PennDOT Driver Safety Examiner will give the exam. Upon arrival, you must show the Driver Safety Examiner the following:

- **Your notification letter or restoration requirements letter**
- **Your driver's license**

If you do not have a valid driver's license, you may bring another form of identification from the following list:

- Other photo ID card or photo welfare card
- Military, bank, employee, or school photo ID or out-of-state driver's license
- Passport, citizenship or naturalization papers, or weapons permit
- Medicare card, voter's registration, vehicle registration, Pennsylvania Learner's Permit, or Temporary Driver's License

If you arrive late, you will **not** be permitted to take the examination. **No one but you may enter the examination room.** Children are not permitted. No one under the influence of alcohol or drugs will be admitted. Eating, drinking and smoking are not allowed at the examination location.

About the Examination

PennDOT will provide the exam materials, including the examination booklet, answer sheet, and pencils. The examination will contain 20 questions. For each question, you will read a statement and be asked to indicate whether it is TRUE or FALSE based on your knowledge of the information in this study guide.

You will **not** be permitted to use this study guide or any other notes during the examination. Talking is not allowed during the examination. You may not leave the room during the examination. If the Driver Safety Examiner feels you are disruptive or cheating, you will fail the exam and must leave immediately.

After you finish the examination, you must return your answer sheet and examination booklet to the Driver Safety Examiner.

Sample Questions

All Special Point Examination questions are based on the information in this study guide.

Review the following sample test questions. The format of these questions is similar to what you will see on the actual Special Point Examination.

1. TRUE or FALSE: If a driver does not pass the Special Point Examination within 30 days of notification from PennDOT, PennDOT will send them another letter informing them that their license will be suspended. (Answer: TRUE)
2. TRUE or FALSE: Driving while tired has no effect on the risk of a serious crash. (Answer: FALSE)

You should also expect TRUE or FALSE questions that are based on driving scenarios similar to those found in this study guide.

Scoring and Results

The PennDOT Driver Safety Examiner who gives the exam will score it for you after you finish. If you pass within the initial 30 day timeframe, PennDOT will remove two points from your driver's record. If you fail, you must reschedule your examination using the same instructions found above. You must still pass the exam within 30 days of notification from PennDOT or you will be notified that your driver's license will be suspended. You may not take the exam again on the same day.

*Study this guide, pass the exam.
Drive safely, earn a point-free driving record.
It's up to you!*

Notes: