

# **D12 SUBSTRUCTURE PRESERVATION FAYETTE COUNTY**

# SCOPE OF WORK

This project is for the bridge preservation of six structures in Fayette county. Work will consist of an epoxy overlay of the existing concrete deck, expansion dam repair/replacement for three structures and concrete repairs to all substructures at each site:

- Route 0119 over SR 1063 (Bethelboro Road) in North Union Township, Fayette County

Traffic will be maintained during Construction with minor shoulder closures on SR 1063 for approximately 4 weeks and temporary lane closures on SR 119 approximately 4 hr intervals. The existing expansion joints seals will be fully replaced on SR 119. Concrete repairs to Piers at all locations and minor shoulder closures on SR 1063 will be required to repair the Piers.

- Route 0119 over SR 2027 (Connellsville Road) in North Union Township, Fayette County

Traffic will be maintained during Construction with minor shoulder closures on SR 2027 for approximately 4 weeks and temporary lane closures on SR 119 approximately 4 hr intervals. The existing expansion joints seals will be fully replaced on SR 119. Concrete repairs to Piers at all locations and minor shoulder closures on SR 2027 will be required to repair the Piers.

- Route 1022 (Rolling Hills Estate Road) over Route 119 in North Union Township, Fayette County

Traffic will be maintained during Construction with minor shoulder closures on SR 119 for approximately 4 weeks. Concrete repairs to Piers at all locations and minor shoulder closures on SR 119 will be required to repair the Piers.

- Route 1051 (Bute Road) over Route 119 in North Union Township, Fayette County

Traffic will be maintained during Construction with minor shoulder closures on SR 119 for approximately 4 weeks. Concrete repairs to Piers at all locations and minor shoulder closures on SR 119 will be required to repair the Piers.

- Route 1069 (Main Street) over Route 119 in North Union Township, Fayette County

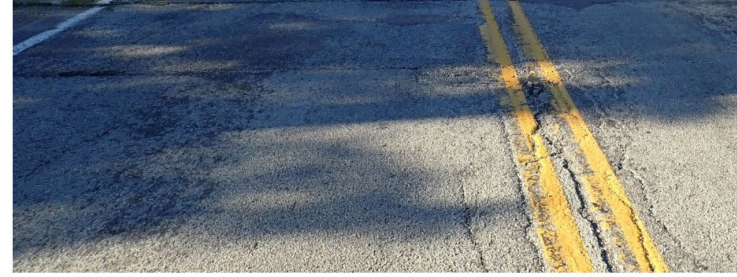
Traffic will be maintained during Construction with minor shoulder closures on SR 119 for approximately 4 weeks. Concrete repairs to Piers at all locations and minor shoulder closures on SR 119 will be required to repair the Piers.

Route 2031 (Dixon Blvd) over Route 119 in North Union Township, Fayette County

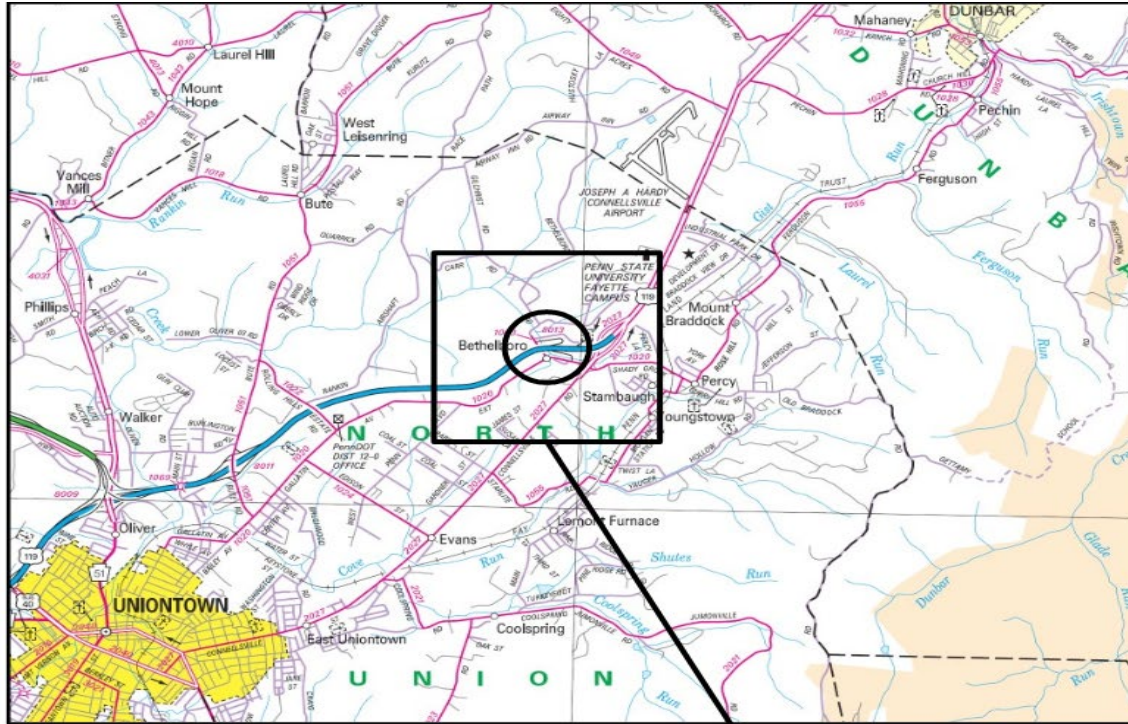
Traffic will be maintained during Construction with minor shoulder closures on SR 119 for approximately 4 weeks. Concrete repairs to Piers at all locations and minor shoulder closures on SR 119 will be required to repair the Piers. Minor lane closures will be maintained on Dixon Blvd to place an epoxy overlay on the deck and replace the seals. Closure s will be for only 8 hours and will be flagged with a flaggers during the placements.



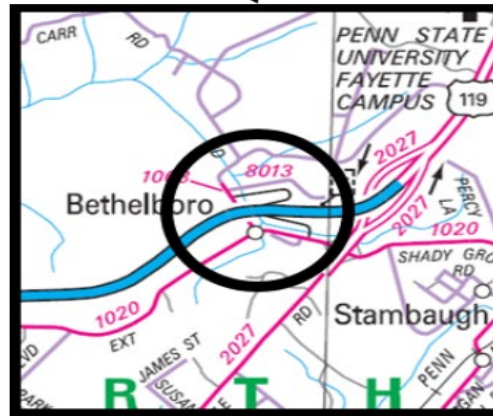
# EPOXY BEFORE & AFTER



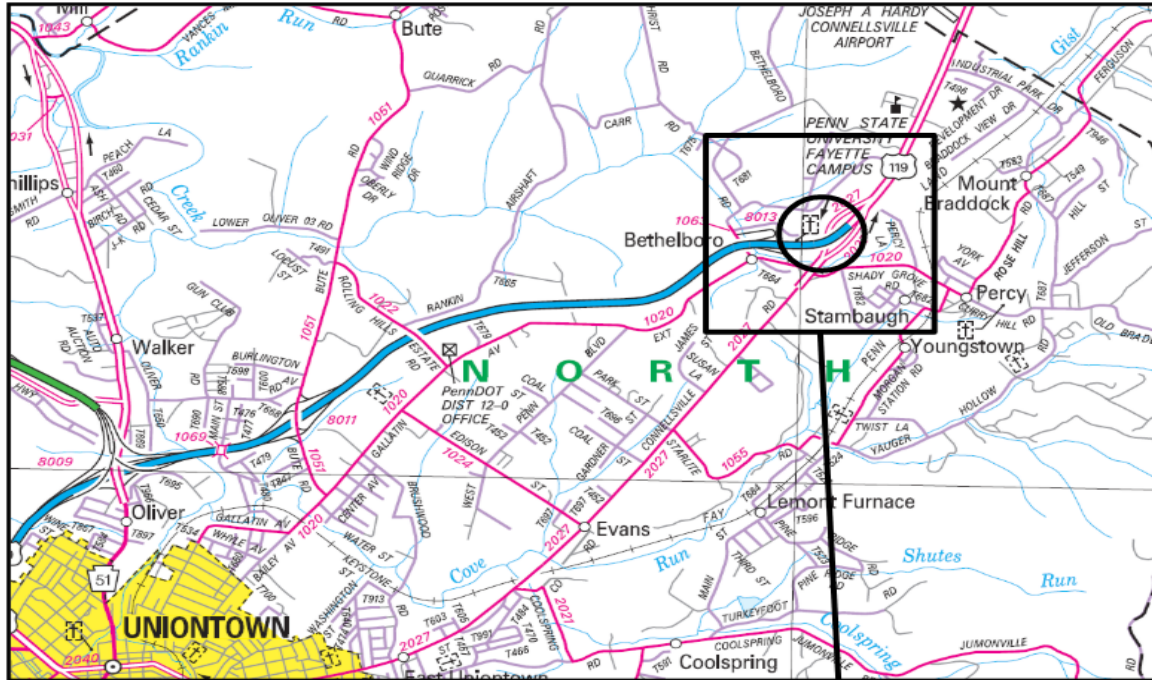
# SR 119-22M LOCATION MAP



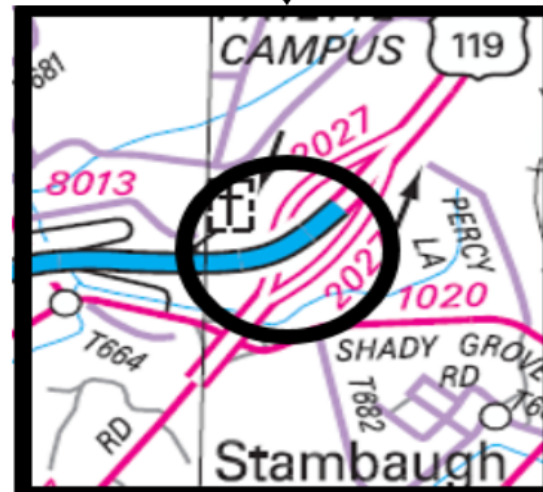
**26-0119-0486-0000**  
**over SR 1063**



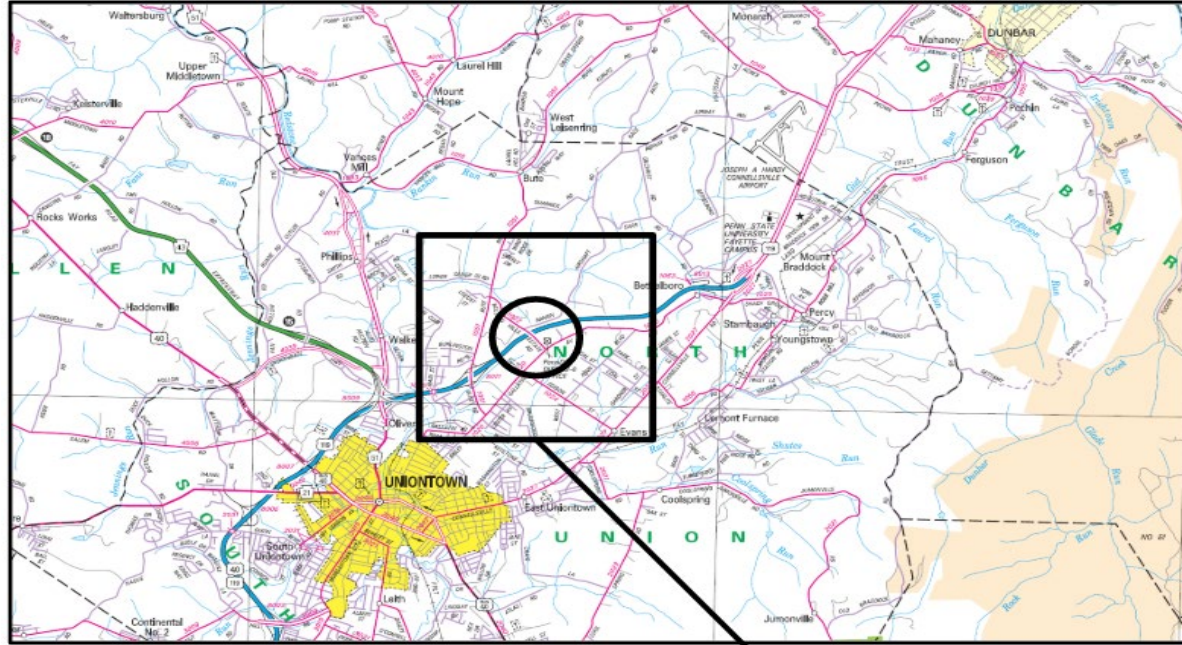
# SR 119-23M LOCATION MAP



26-0119-0486-2186  
over SR 2027



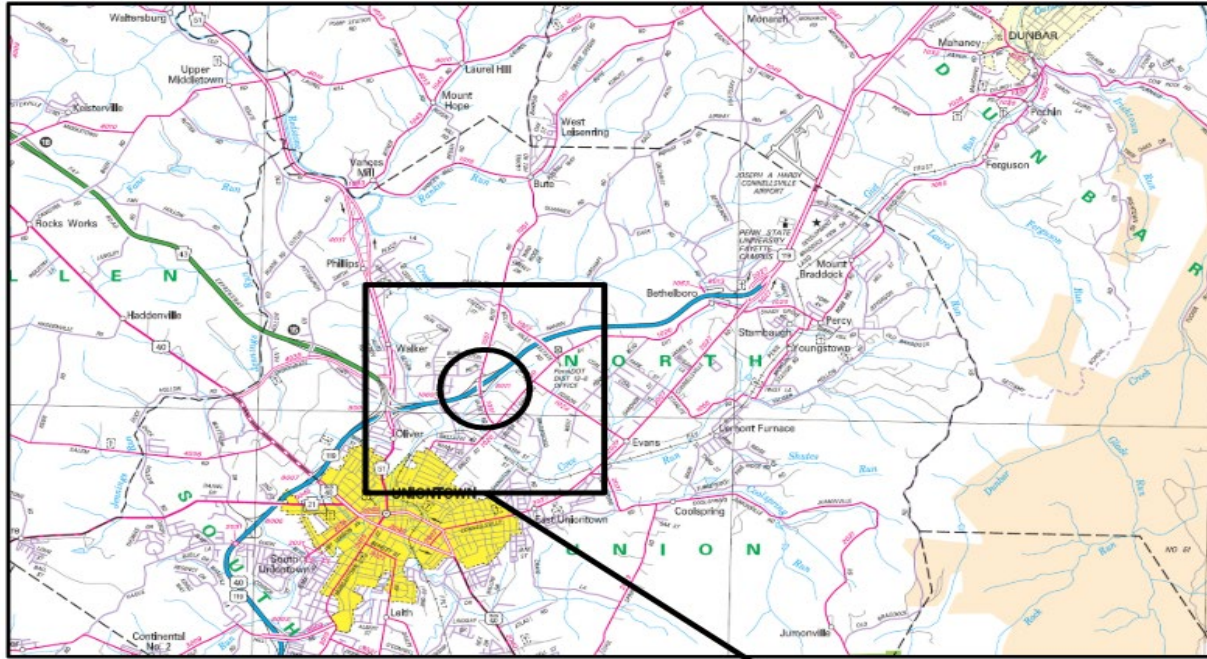
# SR 1022 LOCATION MAP



**26-1022-0020-0207  
over SR 0119**



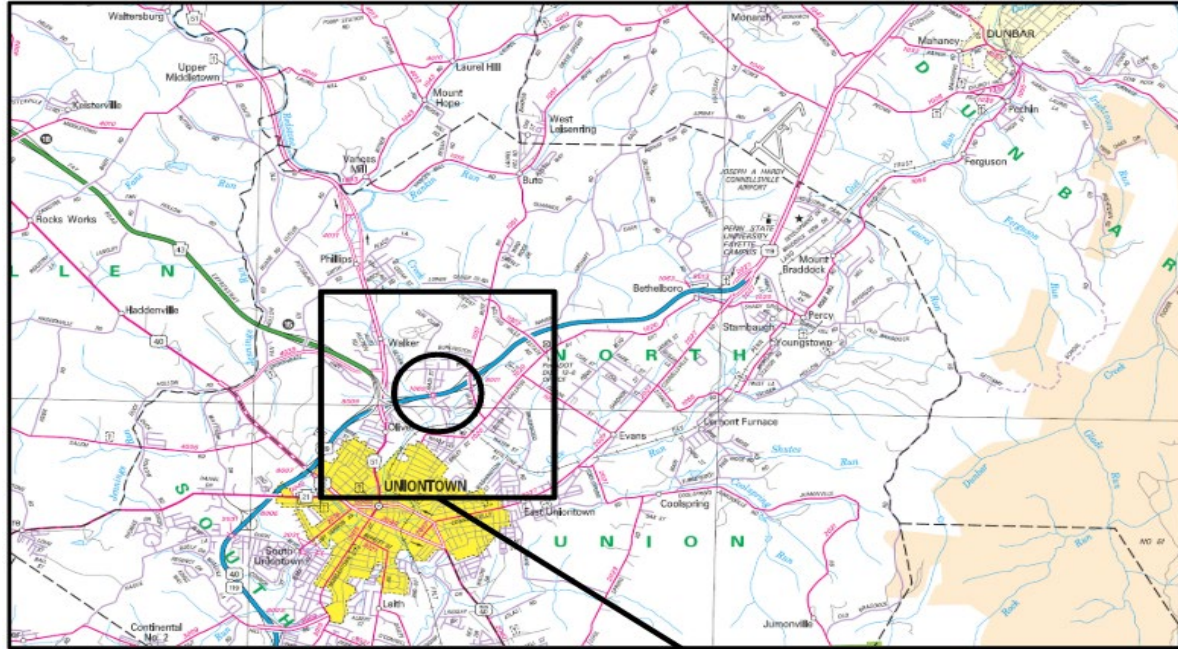
# SR 1051 LOCATION MAP



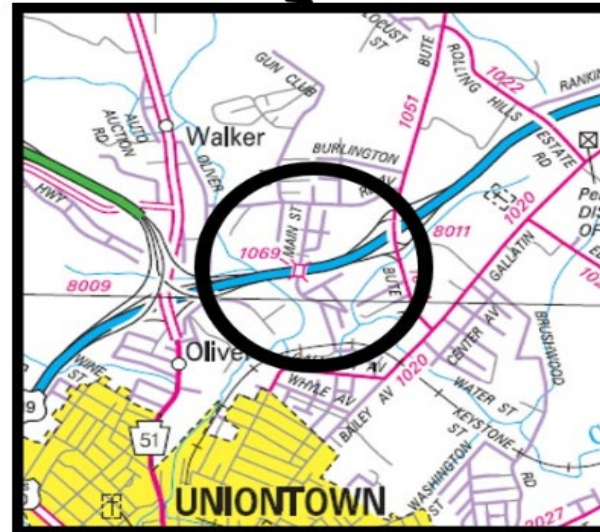
**26-1051-0020-0000**  
**over SR 0119**



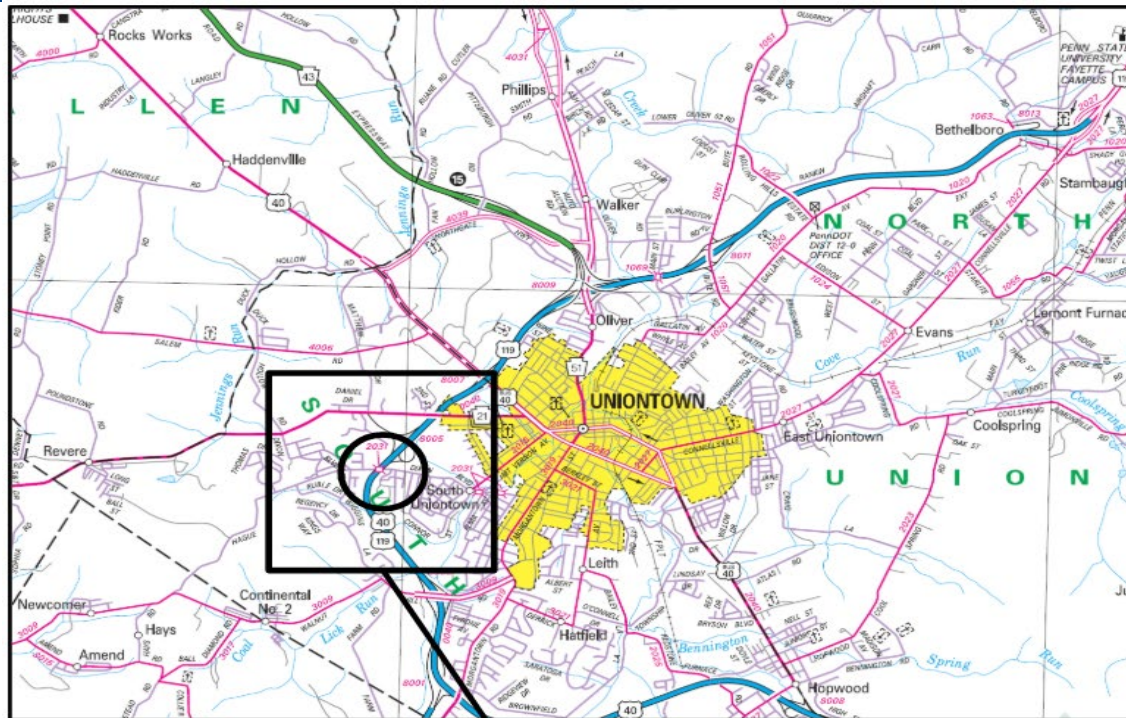
# SR 1069 LOCATION MAP



**26-1069-0010-0000  
over SR 0119**



# SR 2031 LOCATION MAP



**26-2031-0010-0000  
over SR 0040**



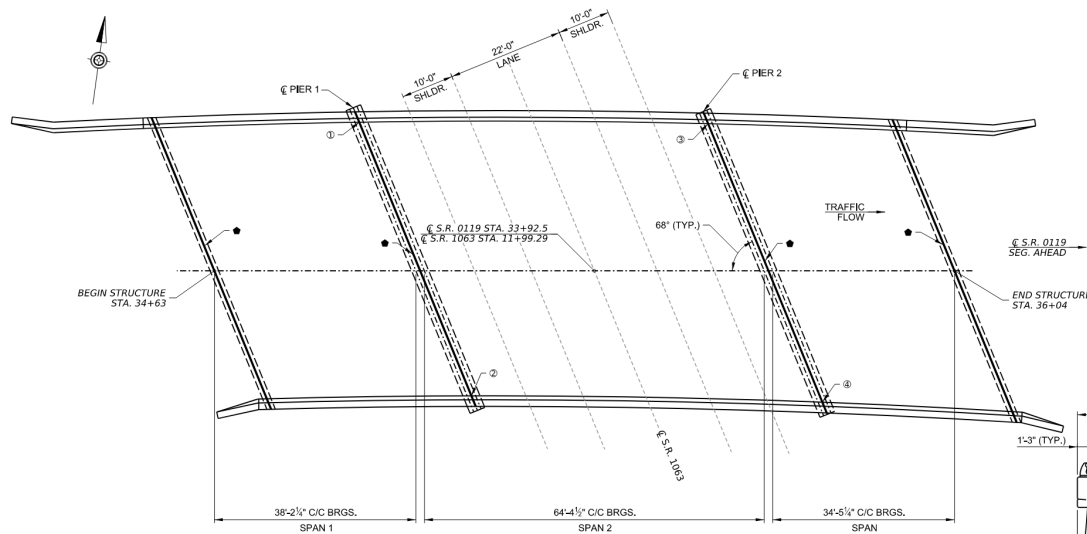
# ROUTE 119-23M



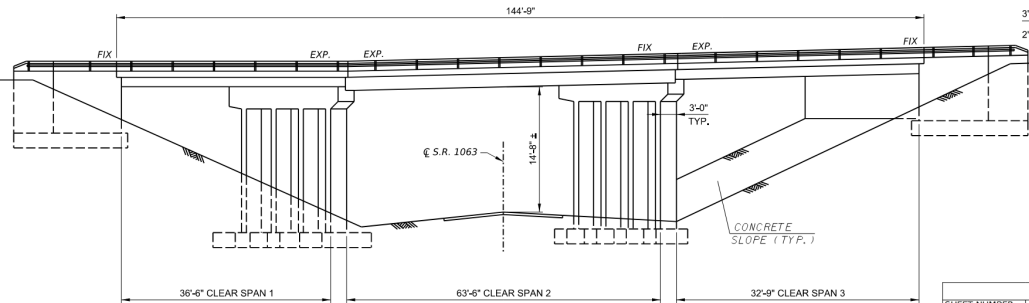
# ROUTE 119-23M



# PRELIMINARY SR 119-23M PLAN



**PLAN**  
(NORTHBOUND LANES)  
0 4 8 12 FEET



**ELEVATION**  
0 4 8 12 FEET

**LEGEND**  
● PRECOMPRESSED, SILICONE AND FOAM HYBRID JOINT SEALING MATERIAL

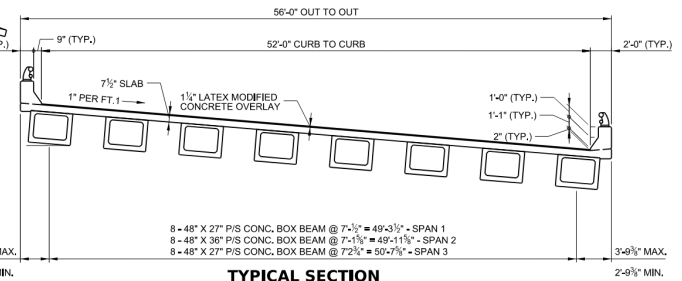
PREPARED BY:  
PENNSYLVANIA DEPARTMENT  
OF TRANSPORTATION  
ENGINEERING DISTRICT 12-0  
UNIONTOWN, PA. 15401

SIGNATURE \_\_\_\_\_ DATE \_\_\_\_\_

TABULATION OF BRIDGE BID ITEMS & APPROXIMATE QUANTITIES				
ITEM NO.	ITEM	UNIT	QUANTITY	
1045-0020	PROTECTIVE COATING FOR REINFORCED CONCRETE SURFACES (EPOXY RESIN)	SY	53	
1090-1018	PRESTRESSED CONCRETE BEAM REPAIRS	SF	86	
9000-0001 (1)	UNFORESEEN STRUCTURE REPAIRS	DOLLAR	25000	
9000-0002 (1)	FULL DEPTH DIAPHRAGM REPAIR	EACH	16	
9000-0003 (1)	CLASS A REPAIR	SF	470	
9000-0010 (1)	PRECOMPRESSED, SILICONE-AND-FOAM HYBRID JOINT SEALING MATERIAL	LF	240	

(1) SEE CONTRACT SPECIAL PROVISIONS

Field Measured joint Openings @ 72°F (NORTHBOUND LANES)		
LOCATION	MEASUREMENT	PLAN CALLOUT
Near Left @ Pier 1	1.25"	1
Near Right @ Pier 1	1.125"	2
Far Left @ Pier 2	0.75"	3
Far Right @ Pier 2	1.25"	4



**TYPICAL SECTION**  
(LOOKING STATION AHEAD)  
0 2 4 6 FEET

8 - 48" X 27" P/S CONC. BOX BEAM @ 7'-1/2" = 49'-3 1/2" - SPAN 1  
8 - 48" X 36" P/S CONC. BOX BEAM @ 7'-1 1/2" = 49'-11 1/2" - SPAN 2  
8 - 48" X 27" P/S CONC. BOX BEAM @ 7'-2 1/2" = 50'-7 1/2" - SPAN 3

**NOTES:**  
● FOR GENERAL NOTES, SEE SHEET 4 OF ROADWAY PLAN.

Mark	Description	By	Chk'd	Recm'd.	Date
REVISIONS					

S.R. 0119 VARIES PREVIOUSLY KNOWN AS L.R. 1058  
BMS STR ID: 26-0119-0486/0487-0000 MPMS/ECMS PROJ: 122364 BRKEY: 16625/16628

SHEET NUMBER	TITLE
1	NORTHBOUND GENERAL PLAN, ELEVATION AND TYPICAL SECTION
2	SOUTHBOUND GENERAL PLAN, ELEVATION AND TYPICAL SECTION
3	NORTHBOUND ABUTMENT DETAILS
4	NORTHBOUND PIER DETAILS
5	SOUTHBOUND ABUTMENT DETAILS
6	SOUTHBOUND PIER DETAILS
7	NORTHBOUND FRAMING PLAN
8	SOUTHBOUND FRAMING PLAN

DESCRIPTION	DWG. NO.	APP. DATE
PREFORMED NEOPRENE COMPRESSION SEAL JOINT FOR APPROACH SLABS	BC-766M	11-23-22
NEOPRENE STRIP SEAL DAM FOR PRESTRESSED CONCRETE & STEEL I-BEAM BRIDGES	BC-767M	11-23-22
REINFORCED CONCRETE REPAIR	BC-783M	01-31-19
TYPICAL WATERPROOFING AND EXPANSION DETAILS	BC-788M	11-23-22
MECHANICAL CONNECTION DETAILS	BC-798M	02-14-23

SUPPLEMENTAL DRAWINGS

**COMMONWEALTH OF PENNSYLVANIA**  
**DEPARTMENT OF TRANSPORTATION**

**FAYETTE COUNTY**  
**S.R. 0119 SECTION 23M**  
SEGMENT 0486/0478 OFFSET 0000  
S.R 0119 - STA. 33+92.50/35+70.00  
OVER S.R. 1063

**3-SPAN PRESTRESSED CONCRETE BOX BEAM BRIDGE**  
**NORTHBOUND GENERAL PLAN, ELEVATION AND TYPICAL SECTION**

RECOMMENDED _____	SHEET <u>1</u> OF <u>8</u> + SUPPLEMENTAL DRAWINGS
DISTRICT BRIDGE ENGINEER	S - 43836

DES: JTD    DWG: JTD    CKD: MST    Q/A: CMK



# ROUTE 119-22M



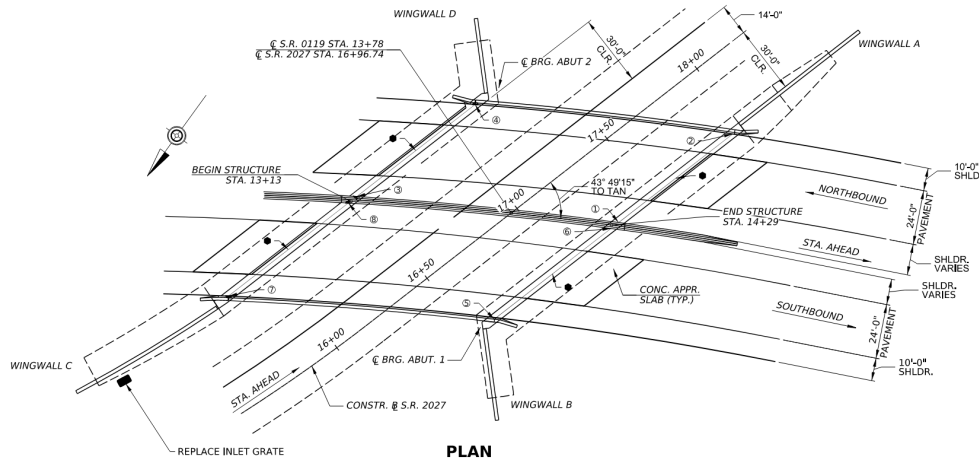
2024/12/16



# ROUTE 119-22M



# PRELIMINARY SR 119-22M PLAN



**LEGEND:**  
 ● PRECOMPRESSED, SILICONE-AND-FOAM HYBRID JOINT SEALING MATERIAL

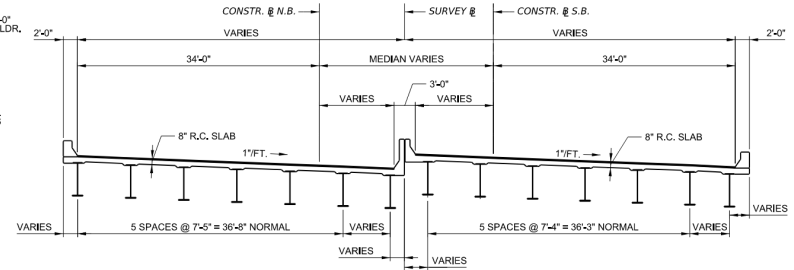
**PLAN**  
 25 0 25 FEET

Field Measured Joint Openings @ 72° (NORTHBOUND LANES)

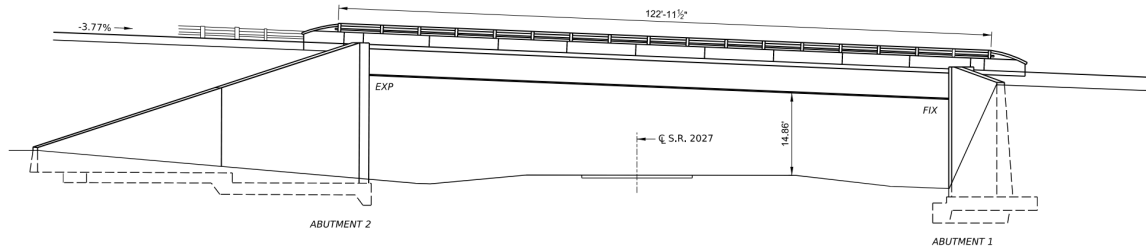
LOCATION	MEASUREMENT	PLAN CALLOUT
Near Left @ Abutment 1	1.375"	3
Near Right @ Abutment 1	1.5"	2
Far Left @ Abutment 2	1"	3
Far Right @ Abutment 2	1.25"	4

Field Measured Joint Openings @ 72° (SOUTHBOUND LANES)

LOCATION	MEASUREMENT	PLAN CALLOUT
Near Left @ Abutment 1	1.25"	5
Near Right @ Abutment 1	1.25"	6
Far Left @ Abutment 2	1.25"	7
Far Right @ Abutment 2	1.125"	8



**TYPICAL SECTION**  
 (STATIONS AHEAD)  
 2 0 4 8 FEET



**ELEVATION**  
 7 0 4 8 12 FEET

**INDEX OF DRAWINGS**

SHEET NUMBER	TITLE
1	GENERAL PLAN, ELEVATION AND TYPICAL SECTION
2	ABUTMENT 1 DETAILS
3	ABUTMENT 2 DETAILS
4	ABUTMENT ENCASEMENT DETAILS

PREPARED BY:  
 PENNSYLVANIA DEPARTMENT  
 OF TRANSPORTATION  
 ENGINEERING DISTRICT 12-0  
 UNIONTOWN, PA, 15401

SIGNATURE \_\_\_\_\_ DATE \_\_\_\_\_

DESCRIPTION	DWG. NO.	APP. DATE
INLET TOPS, GRATES, AND FRAMES	RC-45M	02-10-26
NEOPRENE STRIP SEAL DAM FOR PRESTRESSED CONCRETE & STEEL I-BEAM BRIDGES	BC-767M	11-23-22
REINFORCED CONCRETE REPAIR	BC-783M	01-31-19
TYPICAL WATERPROOFING AND EXPANSION DETAILS	BC-788M	11-23-22
MECHANICAL CONNECTION DETAILS	BC-798M	02-14-23

SUPPLEMENTAL DRAWINGS

**NOTES:**  
 ● FOR GENERAL NOTES, SEE SHEET 4 OF ROADWAY PLAN.  
 ● FOR QUANTITIES, SEE SHEET 2.

Mark	Description	By	Chk'd	Recm'd	Date
REVISIONS					

S.R. 0119 PREVIOUSLY KNOWN AS L.R. 1058  
 BMS STR ID: 26-0119-0486-2186 MPMS/ECMS PROJ: 122364 BRKEY: 16627

COMMONWEALTH OF PENNSYLVANIA  
 DEPARTMENT OF TRANSPORTATION

FAYETTE COUNTY  
 S.R. 0119 SECTION 22M  
 SEGMENT 0486 OFFSET 2186  
 S.R 0119 - STA. 13+78.00  
 OVER S.R. 2027

1-SPAN COMPOSITE STEEL MULTI-GIRDER BRIDGE  
 GENERAL PLAN, ELEVATION AND TYPICAL SECTION

RECOMMENDED \_\_\_\_\_  
 \_\_\_\_\_  
 DISTRICT BRIDGE ENGINEER

SHEET 1 OF 4  
 + SUPPLEMENTAL  
 DRAWINGS  
 S - 43837

DES:JTD DWG:JTD CKD:MST Q/A:CMK

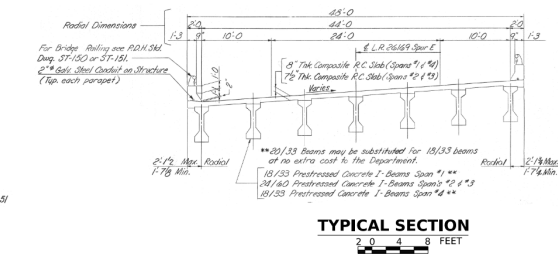
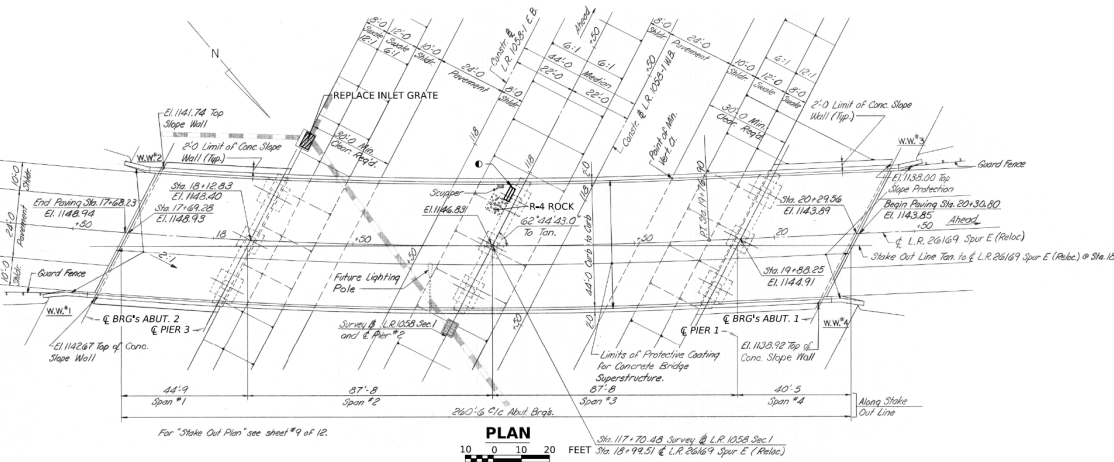
# ROUTE 1022



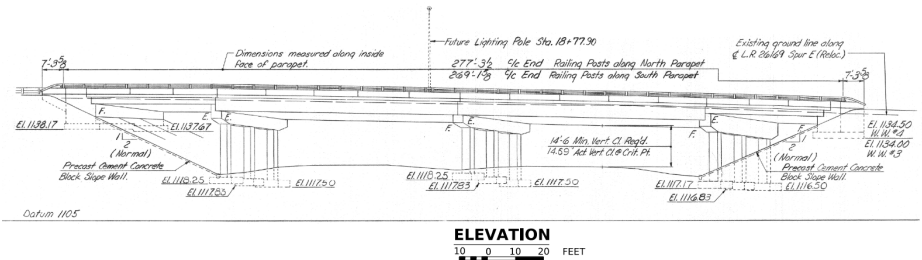
# ROUTE 1022



# PRELIMINARY ROUTE 1022 PLAN



**LEGEND:**  
 ● CONCRETE SPLASH BLOCK, FOR DETAILS SEE SHEET 4 OF ROADWAY PLAN.



**TABULATION OF BRIDGE BID ITEMS & APPROXIMATE QUANTITIES**

ITEM NO.	CLASS 1 EXCAVATION	ITEM	UNIT	QUANTITY
0203-0001		INLET GRATE	CY	5
0205-0264	SELECTED BORROW EXCAVATION ROCK, CLASS B 4		CY	3
0205-0292	STRUCTURE BACKFILL		CY	5
0605-2700		REMOVAL OF EXISTING GUIDELINE (CONTRACTOR'S PROPERTY)	EACH	1
0620-0503		SINGLE FACE OF CONCRETE BARRIER	LF	50
0623-0052		REMOVAL OF EXISTING SINGLE FACE CONCRETE BARRIER	LF	110
0623-0295		CLASS A CEMENT CONCRETE	CY	12
1002-0052		REINFORCEMENT BARS, EPOXY COATED	LBS	945
1003-0002		DOWEL HOLES, 6" DEPTH	EACH	244
1045-0020		PROTECTIVE COATING FOR REINFORCED CONCRETE SURFACES (EPOXY RESIN)	SY	95
1090-1018		PRESTRESSED CONCRETE BEAM REPAIRS	SF	7
9000-0001 (1)		UNFORESSEEN STRUCTURE REPAIRS	DOLLAR	30000
9000-0002 (1)		FULL DEPTH IMPACT/CRACK REPAIR	SF	465
9000-0003 (1)		CLASS A REPAIR	EACH	1
9000-0004 (1)		SPLASH BLOCK	EACH	1
9000-0005 (1)		MODIFICATION OF EXISTING DOWNSPOUTING	EACH	1
9000-0006 (1)		PER ENCASMENT SURFACE PREPARATION	LS	1

(1) SEE CONTRACT SPECIAL PROVISIONS

**NOTES:**  
 ● FOR GENERAL NOTES, SEE SHEET 4 OF ROADWAY PLAN.

Mark	Description	By	Chk'd	Recm'd.	Date
REVISIONS					

S.R. 1022 PREVIOUSLY KNOWN AS L.R. 26169  
 BMS STR ID: 26-1022-0020-0207 MPMS/ECMS PROJ: 122364 BRKEY: 16741

**COMMONWEALTH OF PENNSYLVANIA**  
**DEPARTMENT OF TRANSPORTATION**

**FAYETTE COUNTY**  
**S.R. 1022 SECTION 06M**  
 SEGMENT 0020 OFFSET 0207  
 S.R. 1022- STA. 18+99.51  
 OVER S.R. 0119  
**4-SPAN PRESTRESSED CONCRETE I-BEAM BRIDGE**  
**GENERAL PLAN, ELEVATION AND TYPICAL SECTION**

**INDEX OF DRAWINGS**

SHEET NUMBER	TITLE
1	GENERAL PLAN, ELEVATION AND TYPICAL SECTION
2	ABUTMENT DETAILS
3	PIER 1 DETAILS
4	PIER 2 DETAILS
5	PIER 3 DETAILS
6	FRAMING PLAN
7	COLUMN ENCASMENT DETAILS

PREPARED BY:  
 PENNSYLVANIA DEPARTMENT  
 OF TRANSPORTATION  
 ENGINEERING DISTRICT 12-0  
 UNIONTOWN, PA. 15401

SIGNATURE \_\_\_\_\_ DATE \_\_\_\_\_

**SUPPLEMENTAL DRAWINGS**

DESCRIPTION	DWG. NO.	APP. DATE
BRIDGE DRAINAGE	BC-751M	01-31-19
REINFORCED CONCRETE REPAIR	BC-783M	01-31-19
TYPICAL WATERPROOFING AND EXPANSION DETAILS	BC-788M	11-23-22
MECHANICAL CONNECTION DETAILS	BC-798M	02-14-23

RECOMMENDED \_\_\_\_\_  
 DISTRICT BRIDGE ENGINEER

SHEET 1 OF 7  
 + SUPPLEMENTAL DRAWINGS  
**S - 43838**

DES:JTD DWG:JTD CKD:MST Q/A:CMK



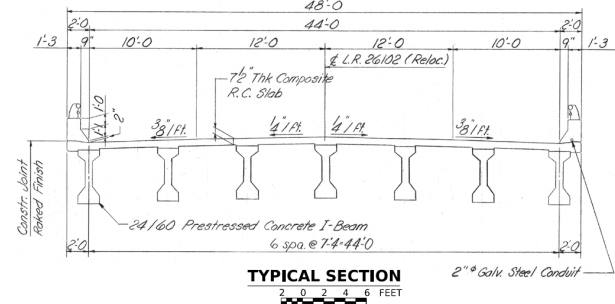
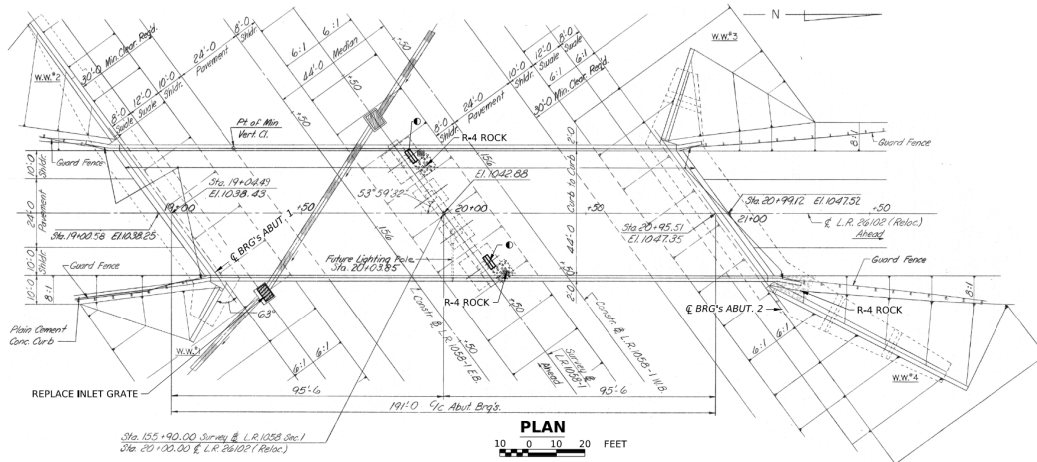
# ROUTE 1051



# ROUTE 1051



# PRELIMINARY ROUTE 1051 PLAN

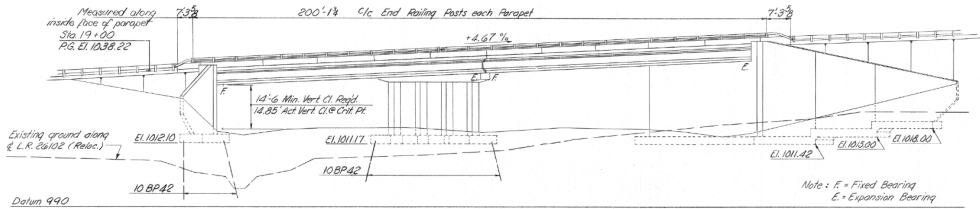


**TYPICAL SECTION**  
2" Galv Steel Conduit

**LEGEND**  
 ● CONCRETE SPLASH BLOCK, FOR DETAILS SEE SHEET 4 OF ROADWAY PLAN.

ITEM NO.	ITEM	UNIT	QUANTITY
0203-0001	CLASS 1 EXCAVATION	CY	9
0205-0264	SELECTED BORROW EXCAVATION ROCK, CLASS 4	CY	9
0205-0282	STRUCTURE BACKFILL	CY	9
0605-2700	INLET GRATE	EACH	1
0620-0503	REMOVAL OF EXISTING GUIDELINE (CONTRACTOR'S PROPERTY)	LF	50
0623-0052	SINGLE FACE OF CONCRETE BARRIER	LF	130
0623-0285	REMOVAL OF EXISTING SINGLE FACE CONCRETE BARRIER	LF	80
0623-0010	CLASS A CEMENT CONCRETE	CY	37
1002-0052	REINFORCEMENT BARS, EPOXY COATED	LBS	2405
1003-0002	DOWEL HOLES, 6" DEPTH	EACH	858
1045-0020	PROTECTIVE COATING FOR REINFORCED CONCRETE SURFACES (EPOXY RESIN)	SY	235
1090-1018	PRESTRESSED CONCRETE BEAM REPAIRS	SF	9
9000-0001 (1)	UNFORESEEN STRUCTURE REPAIRS	DOLLAR	25000
9000-0002 (1)	FULL DEPTH DIAPHRAGM REPAIR	EACH	1
9000-0003 (1)	CLASS A REPAIR	SF	405
9000-0004 (1)	SPLASH BLOCK	EACH	1
9000-0005 (1)	MODIFICATION OF EXISTING DOWNSPOUTING	EACH	1
9000-0007 (1)	ABUTMENT ENCASEMENT SURFACE PREPARATION	LBS	1

(1) SEE CONTRACT SPECIAL PROVISIONS



**ELEVATION**  
10 0 10 20 FEET

**NOTES:**  
 ● FOR GENERAL NOTES, SEE SHEET 4 OF ROADWAY PLAN.

Mark	Description	By	Chk'd	Recm'd.	Date
REVISIONS					

S.R. 1051 PREVIOUSLY KNOWN AS L.R. 26102  
 BMS STR ID: 26-1051-0020-0000 MPMS/ECMS PROJ: 122364 BRKEY: 16795

**COMMONWEALTH OF PENNSYLVANIA  
 DEPARTMENT OF TRANSPORTATION**

**FAYETTE COUNTY  
 S.R. 1051 SECTION 07M  
 SEGMENT 0020 OFFSET 0000  
 S.R 1051- STA. 20+00.00  
 OVER S.R. 1051**

**2-SPAN PRESTRESSED CONCRETE I-BEAM BRIDGE  
 GENERAL PLAN, ELEVATION AND TYPICAL SECTION**

RECOMMENDED \_\_\_\_\_  
 \_\_\_\_\_  
 DISTRICT BRIDGE ENGINEER

SHEET 1 OF 4  
 + SUPPLEMENTAL DRAWINGS  
**S - 43839**

SHEET NUMBER	TITLE
1	GENERAL PLAN, ELEVATION AND TYPICAL SECTION
2	ABUTMENT DETAILS
3	PIER DETAILS
4	FRAMING PLAN

PREPARED BY:  
 PENNSYLVANIA DEPARTMENT  
 OF TRANSPORTATION  
 ENGINEERING DISTRICT 12-0  
 UNIONTOWN, PA. 15401

\_\_\_\_\_  
 SIGNATURE

\_\_\_\_\_  
 DATE

BRIDGE DRAINAGE	BC-751M	01-31-19
REINFORCED CONCRETE REPAIR	BC-703M	01-31-19
TYPICAL WATERPROOFING AND EXPANSION DETAILS	BC-788M	11-23-22
MECHANICAL CONNECTION DETAILS	BC-798M	02-14-23
DESCRIPTION	DWG. NO.	APP. DATE

SUPPLEMENTAL DRAWINGS

DES:JTD | DWG:JTD | CKD:MST | Q/A:CMK

# ROUTE 1069



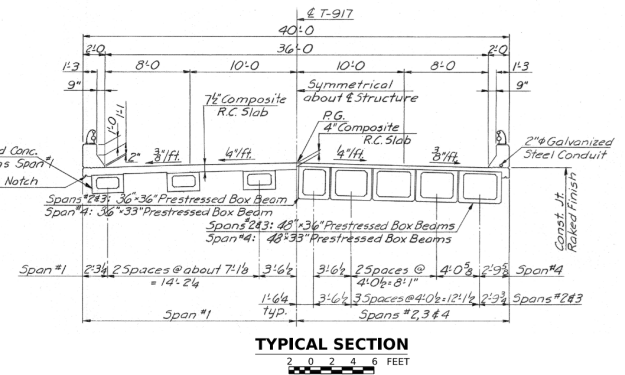
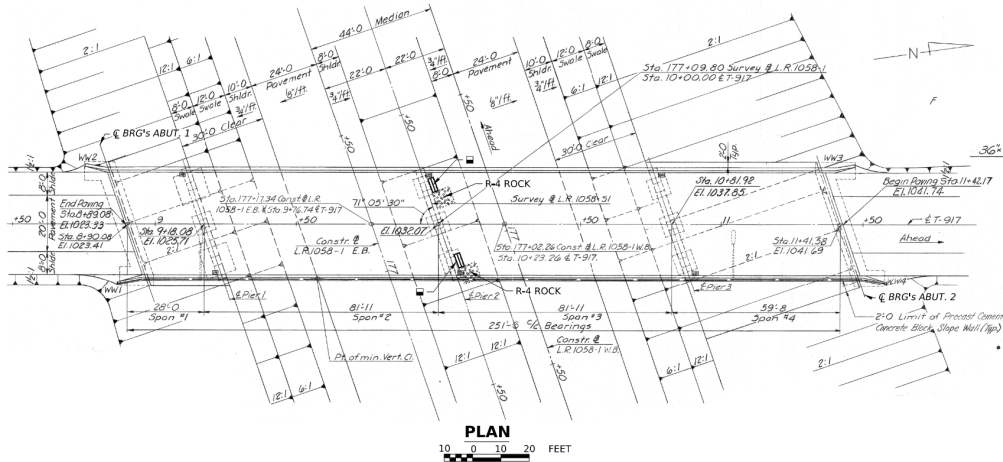
2024/11/05



# ROUTE 1069



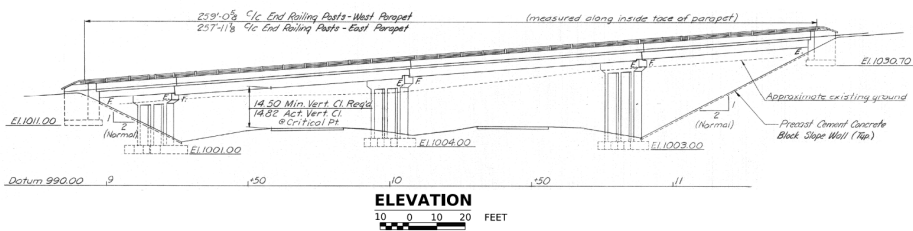
# PRELIMINARY ROUTE 1069 PLAN



**LEGEND**  
 ■ CONCRETE SPLASH BLOCK, FOR DETAILS SEE SHEET 4 OF ROADWAY PLAN.

ITEM NO.	ITEM	UNIT	QUANTITY
0205-0264	SELECTED BORROW EXCAVATION ROCK CLASS 4	CY	5
1045-0020	PROTECTIVE COATING FOR REINFORCED CONCRETE SURFACES (EPOXY RESIN)	SY	30
1090-1018	PRESTRESSED CONCRETE BEAM REPAIRS	SF	1
9000-0001 (1)	UNFORESEEN STRUCTURE REPAIRS	DOLLAR	10000
9000-0002 (1)	FULL DEPTH DAMPHRAGM REPAIR	EACH	1
9000-0003 (1)	CLASS A REPAIR	SF	267
9000-0004 (1)	SPLASH BLOCK	EACH	2
9000-0005 (1)	MODIFICATION OF EXISTING DOWNSPOUTING	EACH	2

(1) SEE CONTRACT SPECIAL PROVISIONS



**NOTES:**  
 ● FOR GENERAL NOTES, SEE SHEET 4 OF ROADWAY PLAN.

Mark	Description	By	Chkd	Recm'd	Date
REVISIONS					

S.R. 1069 PREVIOUSLY KNOWN AS L.R. T-917  
 BMS STR ID: 26-1069-0010-0000 MPMS/ECMS PROJ: 122364 BRKEY: 16623

**COMMONWEALTH OF PENNSYLVANIA  
 DEPARTMENT OF TRANSPORTATION**

**FAYETTE COUNTY  
 S.R. 1069 SECTION 07M  
 SEGMENT 0010 OFFSET 0000  
 S,R 1069 STA. 10+00.00  
 OVER S.R. 0119**

**4-SPAN PRESTRESSED CONCRETE BOX BEAM BRIDGE  
 GENERAL PLAN, ELEVATION AND TYPICAL SECTION**

RECOMMENDED \_\_\_\_\_  
 DISTRICT BRIDGE ENGINEER

SHEET 1 OF 6  
 + SUPPLEMENTAL DRAWINGS  
**S - 43840**

SHEET NUMBER	TITLE
1	GENERAL PLAN, ELEVATION AND TYPICAL SECTION
2	ABUTMENT DETAILS
3	PIER 1 DETAILS
4	PIER 2 DETAILS
5	PIER 3 DETAILS
6	FRAMING PLAN

PREPARED BY:  
 PENNSYLVANIA DEPARTMENT  
 OF TRANSPORTATION  
 ENGINEERING DISTRICT 12-0  
 UNIONTOWN, PA. 15401

SIGNATURE \_\_\_\_\_ DATE \_\_\_\_\_

BRIDGE DRAINAGE	NO.	DATE
REINFORCED CONCRETE REPAIR	BC-751M	01-31-19
TYPICAL WATERPROOFING AND EXPANSION DETAILS	BC-783M	01-31-19
MECHANICAL CONNECTION DETAILS	BC-798M	02-14-23
DESCRIPTION	DWG. NO.	APP. DATE

DES:JTD    DWG:JTD    CKD:MST    Q/A:CMK

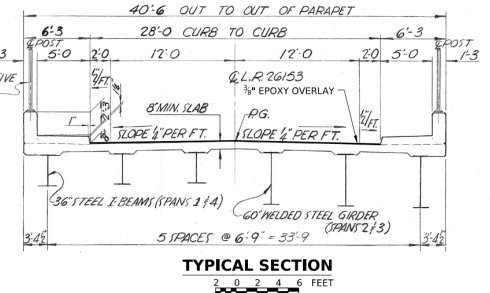
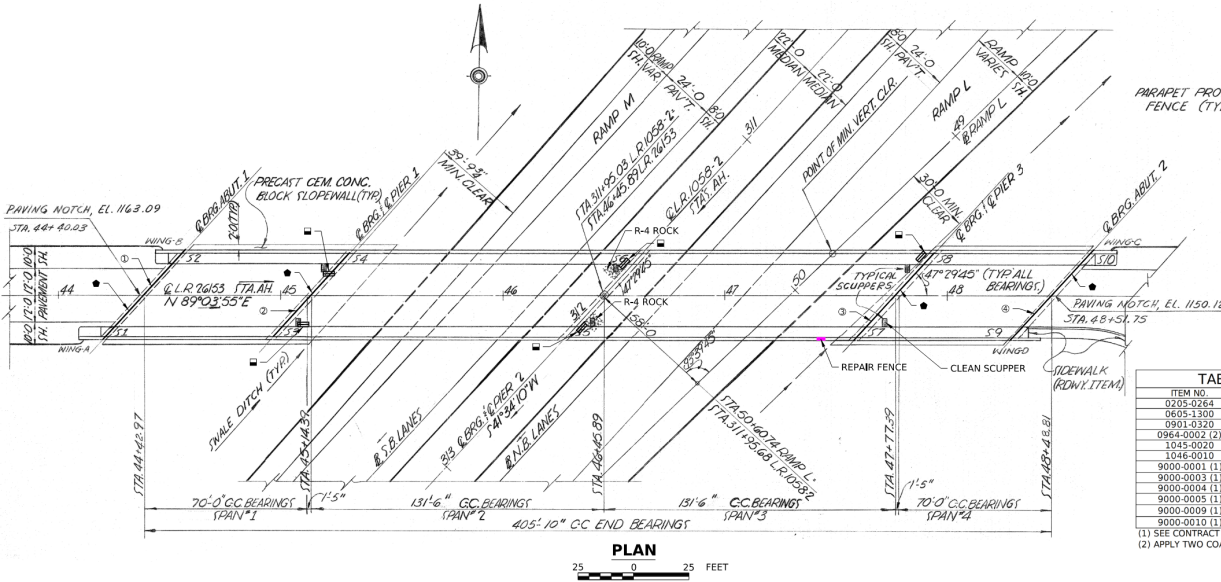
# ROUTE 2031



# ROUTE 2031



# PRELIMINARY ROUTE 2031 PLAN



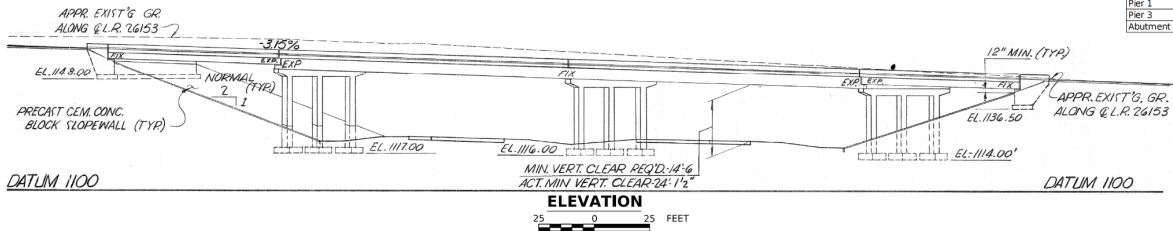
**TABULATION OF BRIDGE BID ITEMS & APPROXIMATE QUANTITIES**

ITEM NO.	ITEM	UNIT	QUANTITY
0205-0264	SELECTED BORROW EXCAVATION ROCK, CLASS 4	CY	5
0905-1500	CLEANING DRAINAGE STRUCTURES	EACH	1
0901-0320	4" STANDARD PAVEMENT MARKING, PAINT & BEADS, YELLOW	LF	450
0964-0002 (2)	4" YELLOW EPOXY PAVEMENT MARKINGS	LF	900
1045-0000	PROTECTIVE COATING FOR REINFORCED CONCRETE SURFACES (EPOXY RESIN)	SY	59
1046-0010	EPOXY OVERLAY	SY	1436
9000-0001 (1)	UNFORESSEEN STRUCTURE REPAIRS	DOLLAR	35000
9000-0003 (1)	CLASS A REPAIR	SF	523
9000-0004 (1)	SPLASH BLOCK	EACH	5
9000-0005 (1)	MODIFICATION OF EXISTING DOWNSPOUTING	EACH	2
9000-0009 (1)	REPAIR FENCE	LS	-
9000-0010 (1)	PRECOMPRESSED, SILICONE-AND-FOAM HYBRID JOINT SEALING MATERIAL	LF	228

(1) SEE CONTRACT SPECIAL PROVISIONS  
(2) APPLY TWO COATS

**Field Measured Joint Openings @ 63°**

LOCATION	MEASUREMENT	PLAN CALLOUT
Abutment 1	1.125" - 1.375"	1
Pier 1	1.625" - 1.875"	2
Pier 3	2.25" - 2.625"	3
Abutment 2	1" - 1.25"	4



**NOTES:**

- FOR GENERAL NOTES, SEE SHEET 4 OF ROADWAY PLAN.

Mark	Description	By	Chk'd	Recm'd.	Date
REVISIONS					

S.R. 2031 PREVIOUSLY KNOWN AS L.R. 26153  
 BMS STR ID: 26-2031-0010-0000 MPMS/ECMS PROJ: 122364 BRKEY: 16883

**COMMONWEALTH OF PENNSYLVANIA  
 DEPARTMENT OF TRANSPORTATION**

**FAYETTE COUNTY  
 S.R. 2031 SECTION 04M  
 SEGMENT 0010 OFFSET 0000  
 S.R. 2031- STA. 46+45.89  
 OVER S.R. 0040  
 2 SPAN CONTINUOUS STEEL MULTI-GIRDER & 2 SPAN  
 COMPOSITE STEEL I-BEAM BRIDGE  
 GENERAL PLAN, ELEVATION AND TYPICAL SECTION**

RECOMMENDED \_\_\_\_\_ SHEET 1 OF 5  
 + SUPPLEMENTAL DRAWINGS  
 DISTRICT BRIDGE ENGINEER S- 43841

**INDEX OF DRAWINGS**

SHEET NUMBER	TITLE
1	GENERAL PLAN, ELEVATION AND TYPICAL SECTION
2	ABUTMENT DETAILS
3	PIER 1 DETAILS
4	PIER 2 DETAILS
5	PIER 3 DETAILS

PREPARED BY:  
 PENNSYLVANIA DEPARTMENT  
 OF TRANSPORTATION  
 ENGINEERING DISTRICT 12-0  
 UNINTOWN, PA. 15401

\_\_\_\_\_  
 SIGNATURE

\_\_\_\_\_  
 DATE

DESCRIPTION	DWG. NO.	APP. DATE
BRIDGE DRAINAGE	BC-751M	01-31-19
PREFORMED NEOPRENE COMPRESSION SEAL JOINT FOR APPROACH SLABS	BC-766M	11-23-22
NEOPRENE STRIP SEAL DAM FOR PRESTRESSED CONCRETE & STEEL I-BEAM BRIDGES	BC-767M	11-23-22
REINFORCED CONCRETE REPAIR	BC-783M	01-31-19
TYPICAL WATERPROOFING AND EXPANSION DETAILS	BC-788M	11-23-22
MECHANICAL CONNECTION DETAILS	BC-798M	02-14-23

**SUPPLEMENTAL DRAWINGS**

**LEGEND**

- PRECOMPRESSED, SILICONE-AND-FOAM HYBRID JOINT SEALING MATERIAL.
- CONCRETE SPLASH BLOCK. FOR DETAILS SEE SHEET 4 OF ROADWAY PLAN.

DES: JTD    DWG: JTD    CKD: MST    Q/A: CMK

# CONTACT INFORMATION

## **Project Manager**

Michael S. Temoshenka

724-439-7432

[mtemoshenk@pa.gov](mailto:mtemoshenk@pa.gov)

## **Press Officer**

Melissa Maczko

724-415-3748

[Mmaczko@pa.gov](mailto:Mmaczko@pa.gov)

