

CEDAR STREET IMPROVEMENTS

DISTRICT 12-0

PROJECT INTRODUCTION

- The purpose of this presentation:
 - Introduce the project
 - Gather feedback
- The project purpose and need:
 - This project is meant to improve the safety of an exit ramp within the District:
 - US 30 West and Cedar Street exit ramp in Hempfield Township.
 - This will be accomplished by installing a guide sign and additional signage leading up to the exit ramp to prepare motorists to get into the correct lane and alert them to slow down for the exit ramp. Additionally, a high friction surface will be applied along the exit ramp with pavement marking arrows.
- Project location maps can be found on the project website.
- Work will be completed using nighttime lane closures and a three day detour of Cedar Street.



PROJECT IMPROVEMENTS

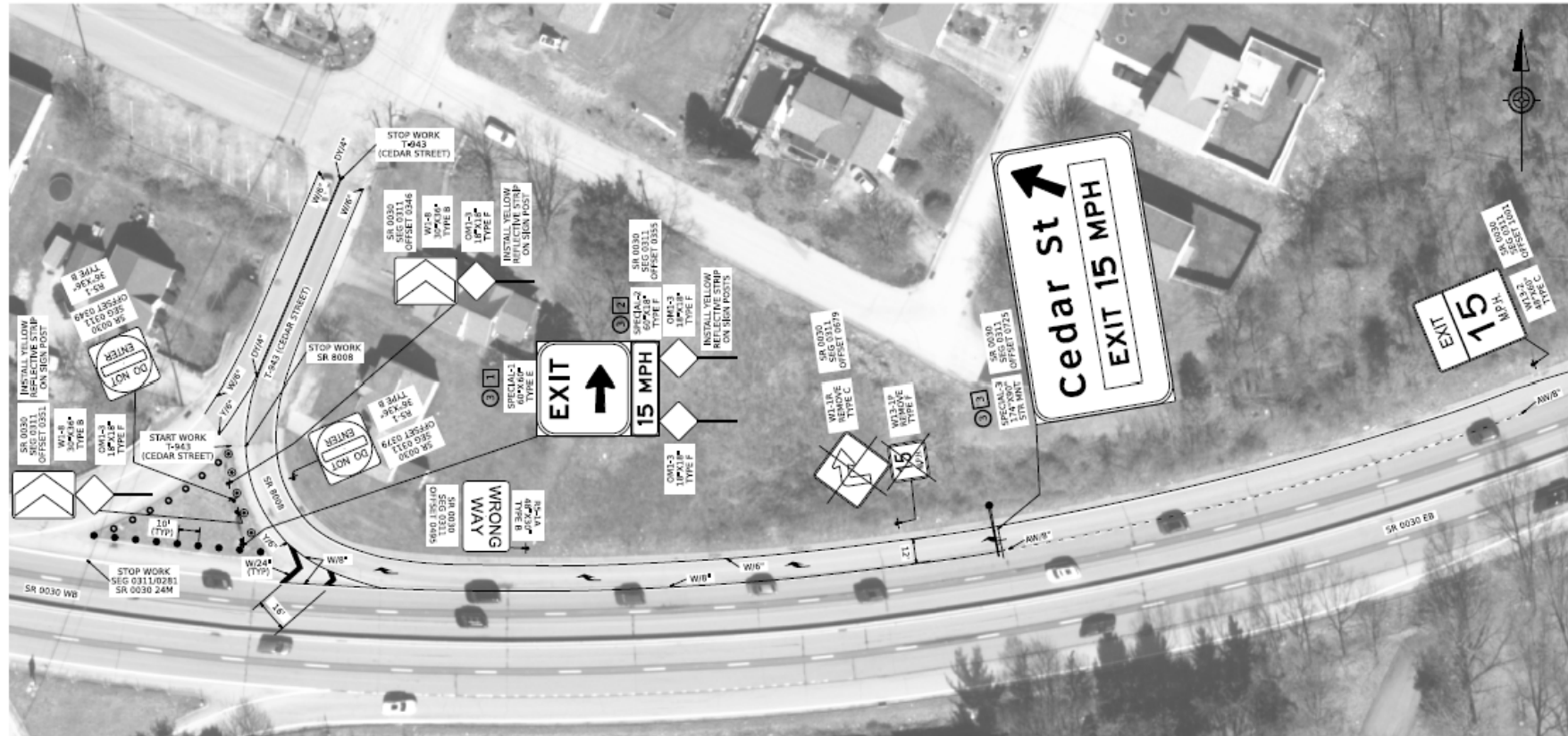
Install guide sign and additional signage

Add high friction surface to exit ramp



PROJECT IMPROVEMENTS

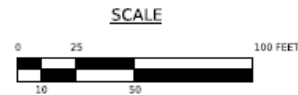
DISTRICT	COUNTY	ROUTE	SECTION	SHEET
22-0	WESTMORELAND	0030	24M	6 OF 8
HEMPFIELD TOWNSHIP				
REV. NO.	REVISIONS	DATE	BY	APP'D



LEGEND

▲ - SIGN
AW/B - AUXILIARY WHITE LINE/WIDTH
WB - SOLID WHITE LINE/WIDTH
YB - SOLID YELLOW LINE/WIDTH
DYB - SOLID DOUBLE YELLOW LINE/WIDTH
▶ - RIGHT TURN ARROW PAVEMENT MARKING LEGEND

⊗ - SIGN LOCATION
⊗ - SIGN NUMBER
— - OVERHEAD SIGN STRUCTURE
● - FLEXIBLE DELINEATOR POST, GROUND-MOUNT TYPE GM-2, WHITE POST WITH WHITE/WHITE SHEETING
● - FLEXIBLE DELINEATOR POST, GROUND-MOUNT TYPE GM-2, YELLOW POST WITH YELLOW/BLANK SHEETING
⊙ - FLEXIBLE DELINEATOR POST, GROUND-MOUNT TYPE GM-2, YELLOW POST WITH YELLOW/WHITE SHEETING



SIGNING AND PAVEMENT MARKING PLAN



PROJECT IMPROVEMENTS

DISTRICT	COUNTY	ROUTE	SECTION	SHEET
1240	WESTMORELAND	0030	24M	7 OF 8
HEMPFIELD TOWNSHIP				
REV NO	REVISIONS	DATE	BY	APP'D



MATCH TO SHEET 6

MATCH TO SHEET 8

LEGEND

- SIGN
- AW/W - AUXILIARY WHITE LINE/WIDTH
- W/W - SOLID WHITE LINE/WIDTH
- (X) - SIGN LOCATION
- [X] - SIGN NUMBER

SCALE



SIGNING AND PAVEMENT MARKING PLAN



PROJECT IMPROVEMENTS

DISTRICT	COUNTY	ROUTE	SECTION	SHEET
1240	WESTMORELAND	0030	24M	8 OF 8
HEMPFIELD TOWNSHIP				
REV NO	REVISIONS	DATE	BY	APPD



MATCH TO SHEET 7

LEGEND

- SIGN
- (X) - SIGN LOCATION
- [X] - SIGN NUMBER

SCALE



SIGNING AND PAVEMENT MARKING PLAN



PROJECT SCHEDULE

- Final Design: Spring 2025
- Construction: Fall 2025 - Spring 2026



CONTACT INFORMATION

PennDOT Engineering District 12-0
Attention: J. Scott Miller, P.E., Project
Manager 825 N. Gallatin Ave. Ext.
Uniontown, PA 15401-2105

Phone: 724-439-7142

Email: jacmiller@pa.gov



FOLLOW PENNDOT



www.PennDOT.pa.gov



www.DMV.pa.gov



PennsylvaniaDepartmentofTransportation



PennDOTNews



PennsylvaniaDOT



PennDOTSec



/company/PennDOT



PennDOTSec



PennsylvaniaDOT