



# PIKE RUN BRIDGE NO. 1 BRIDGE REHABILITATION

**WATER STREET**  
**COAL CENTER BOROUGH, WASHINGTON COUNTY**

©2023 Herbert, Rowland & Grubic, Inc.  
Engineering | Planning | Infrastructure Solutions

# PROJECT TEAM

## PROJECT OWNER

- Vincent Ley, P.E. – 724.250.4650
  - Washington County Planning Commission
  - 95 West Beau Street, Suite 115 | Washington, PA 15301-6825
  - [LeyV@co.Washington.pa.us](mailto:LeyV@co.Washington.pa.us)

## DESIGN TEAM:

- Jeff Mikesic, P.E. – Project Manager at 724.799.4777
  - Herbert, Rowland & Grubic, Inc.
  - 220 West Kensinger Drive, Suite 100; Cranberry Township, PA 16066
  - [jmikesic@hrg-inc.com](mailto:jmikesic@hrg-inc.com)
- Brian Burkus, E.I.T. – Project Manager at 724.415.3767
  - PA Department of Transportation | Engineering District 12-0
  - 825 N. Gallatin Avenue Extension | Uniontown, PA 15401
  - [bburkus@pa.gov](mailto:bburkus@pa.gov)



# PROJECT LOCATION, PURPOSE & NEED

## PROJECT PURPOSE

- To sustain regional connectivity and assure the safe crossing of the general traffic, emergency services, pedestrian and cyclists between Coal Center and California Boroughs

## PROJECT NEED

- Connectivity, structure condition, and mobility. The primary community concern is restoring ambulance and police service.



# PROJECT DESCRIPTION

## PROJECT DESCRIPTION

- Complete rehabilitation of existing 103'-long single-span, pin-connected Pratt through truss built in 1888. The bridge carries Water Street over Pike Run.
- The structure is considered eligible for the national registry for historical structures for its technological significance and is a high priority for historic preservation
- Character defining features:
  - Truss form, method of construction, top and bottom chords, vertical and diagonal members, bridge plaques, sidewalk support brackets, and architectural rivet heads
  - Constructed by Penn Bridge Company, of Beaver Falls, and is an important Pennsylvania bridge builder
  - Oldest of its type in PennDOT District 12-0





# PHOTOS – EXISTING ROADWAY APPROACHES

LOOKING STATIONS AHEAD  
(TOWARDS CALIFORNIA)



LOOKING STATIONS BACK  
(TOWARDS COAL CENTER)



# PHOTOS – EXISTING STRUCTURE

UPSTREAM FACE OF STRUCTURE



DOWNSTREAM FACE OF STRUCTURE





# PHOTOS – EXISTING STREAM CHANNEL

UPSTREAM CHANNEL (FROM STRUCTURE)



DOWNSTREAM CHANNEL (FROM STRUCTURE)



# PROPOSED PROJECT IMPROVEMENTS

## BRIDGE REHABILITATION PROJECT

- Scope of Work includes:
  - Repoint remaining stone masonry with State Historic Preservation Office (SHPO) approved mortar.
  - Scour protection added around abutments.
  - Replace existing truss bearings with elastomeric bearings.
  - Replace floorbeams/stringers/lower chord members in-kind.
  - New paint system applied to all steel members.
  - New concrete filled grid deck is anticipated.
  - New pedestrian rail painted a different color to differentiate between historic and proposed bridge members.



\*These photos are examples and do not represent Pike Run Bridge No. 1



# PROPOSED PROJECT IMPROVEMENTS (CONT'D)

## BRIDGE REHABILITATION PROJECT (CONT'D)

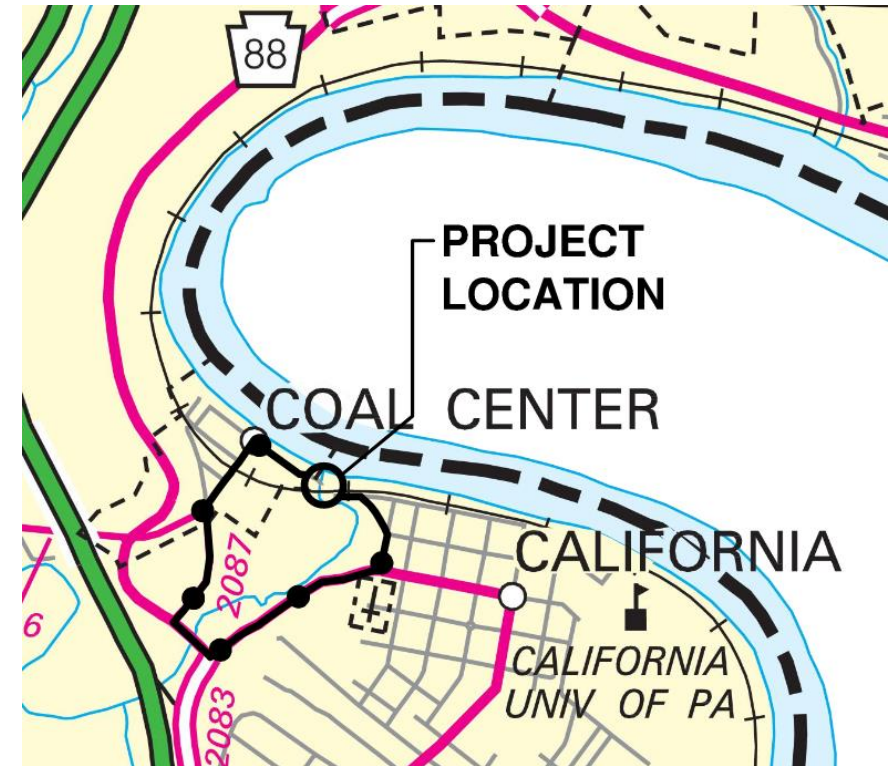
- Project work will utilize a full detour for vehicular and pedestrian traffic
- Overhead and underground utilities will likely need relocation to allow for disassembly of the truss. Utilities affected include Verizon, Lumen, West Penn Power, Columbia Gas
- Construction Schedule:
  - Let Date: August 2026
  - Begin Construction: Fall 2026 (Approximate)
  - End Construction: Spring/Summer 2027 (Approximate)



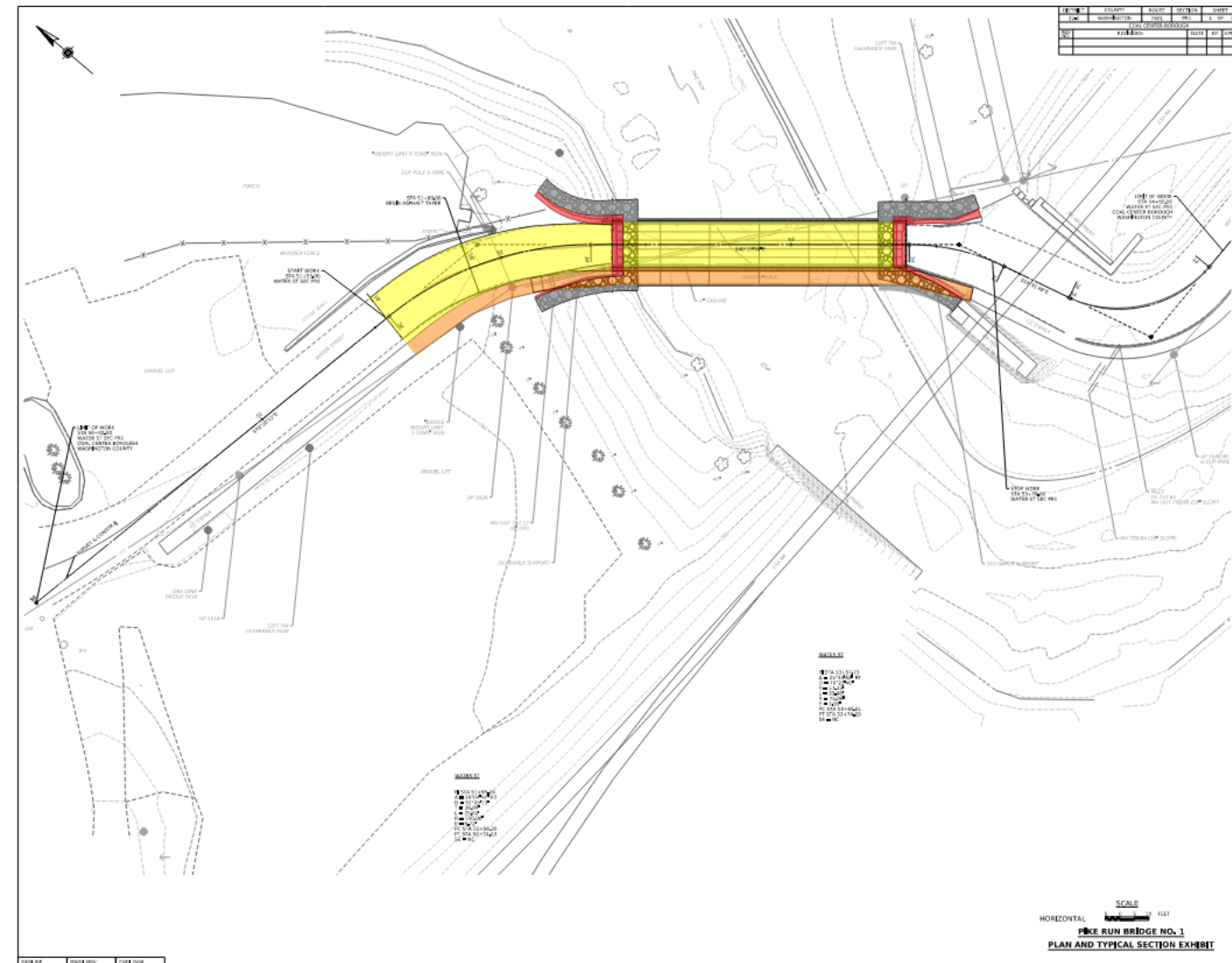
# PROPOSED TRAFFIC CONTROL

## DETOUR

- Vehicular traffic following Water Street, Spring Street, SR 2087 (Poplar Drive), SR 0088 (Highpoint Drive), Third Street, and Mechanic Street.
- Route length approximately 1.2 miles



# PROJECT PLANS - ROADWAY

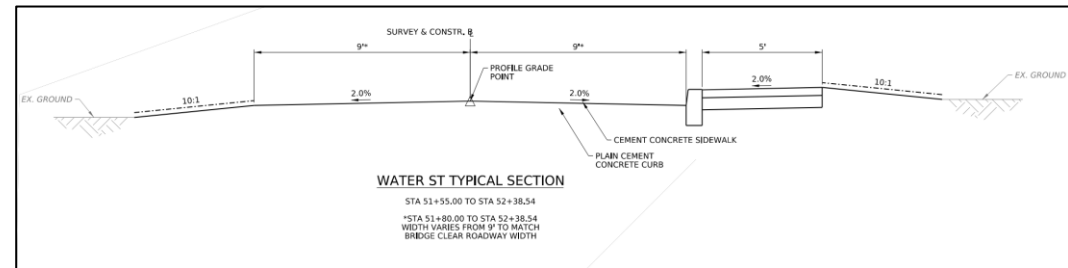


## EXISTING STRUCTURE DATA

STA 52+89.00  
YEAR BUILT: 1887  
YEAR RECONSTRUCTED: 1984  
SUPERSTRUCTURE TYPE: SINGLE SPAN  
STEEL THROUGH TRUSS  
SUBSTRUCTURE TYPE: CUT STONE  
MASONRY WITH CONCRETE CAPS  
SPAN (C-C BRG): 101'-0"  
VERTICAL CLEARANCE: 13'-0"  
CLEAR ROADWAY WIDTH: 13'-10"  
LAST INSPECTION: 7/22/2024

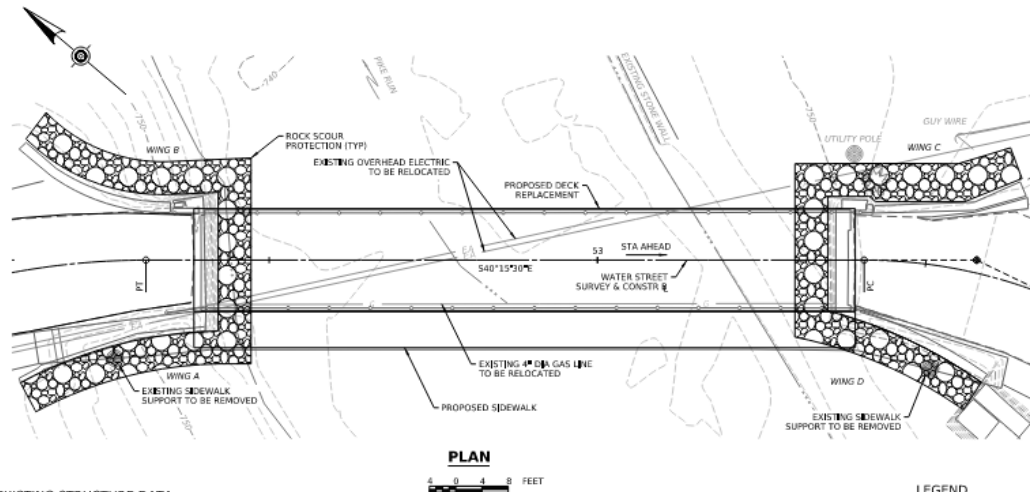
## LEGEND

- PROPOSED ROADWAY
- PROPOSED CURB AND SIDEWALK
- EXISTING BRIDGE
- PROPOSED ROCK PROTECTION



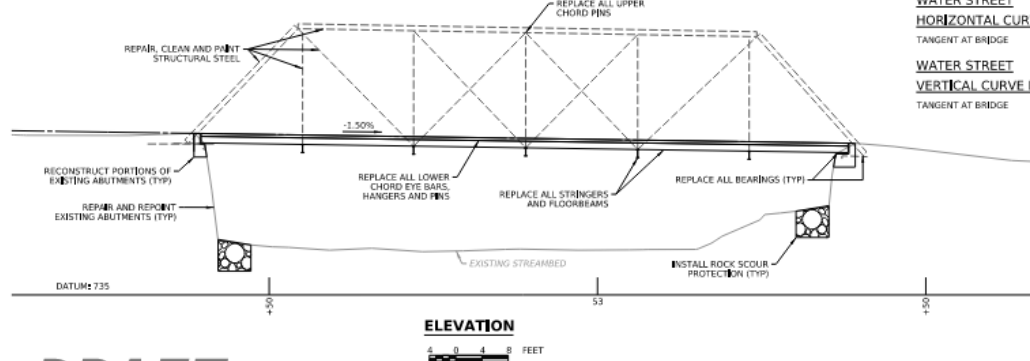


# PROJECT PLANS - STRUCTURE



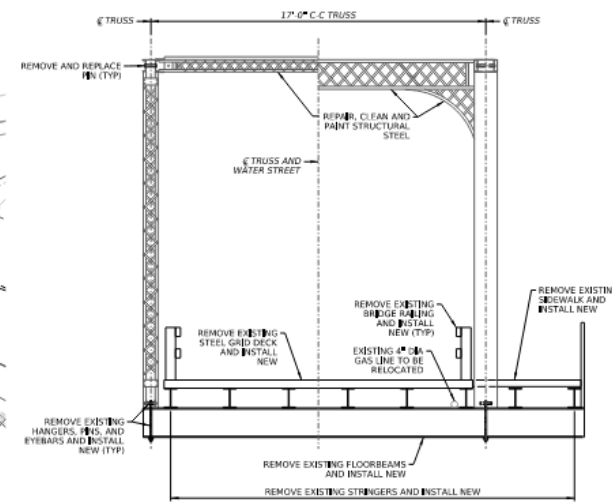
## EXISTING STRUCTURE DATA

STA 52+89.00  
 YEAR BUILT: 1888  
 YEAR RECONSTRUCTED: 1984  
 SUPERSTRUCTURE TYPE: SINGLE SPAN  
 STEEL THROUGH TRUSS  
 SUBSTRUCTURE TYPE: CUT STONE  
 MASONRY WITH CONCRETE CAPS  
 SPAN (C-C BRG): 101'-0"  
 VERTICAL CLEARANCE: 13'-0"  
 CLEAR ROADWAY WIDTH: 12'-0"  
 LAST INSPECTION: 7/22/2024



**DRAFT**

DES: RJP DWG: RJP CKD: -



## TYPICAL SECTION



## NOTES:

1. •

2. •

Mark	Description	By	Chk'd	Revised	Date
REVISIONS					

BMS STR ID: 62 7401 9000 4001 MPMS/ECMS PROJ: S1404 BRKEY: 35367

COMMONWEALTH OF PENNSYLVANIA  
 DEPARTMENT OF TRANSPORTATION

WASHINGTON COUNTY  
 COAL CENTER BOROUGH  
 WATER STREET, STA 52+89.00  
 OVER PIKE RUN

REHABILITATION OF SINGLE SPAN THROUGH TRUSS BRIDGE

TYPE, SIZE, AND LOCATION

RECOMMENDED \_\_\_\_\_ SHEET 1 OF 2  
 \_\_\_\_\_  
 BRIDGE ENGINEER S-



# QUESTIONS?

- Contact HRG Project Manager if you have any questions/concerns
- Jeff Mikesic, P.E. – Project Manager
- Phone: 724.779.4777
- Email: [jmikesic@hrg-inc.com](mailto:jmikesic@hrg-inc.com)

