

FAYETTE & GREENE RESURFACING

Pavement Preservation
SR 0040-15M
SR 2016-02M



Wharton Twp. – Fayette County
Monongahela Twp. – Greene County



SR 40 National Pike 0460/0000 - 0510/1850
SR 2016 Mapletown Road 0070/1986 - 0080/3356



U.S. Department of Transportation
Federal Highway
Administration

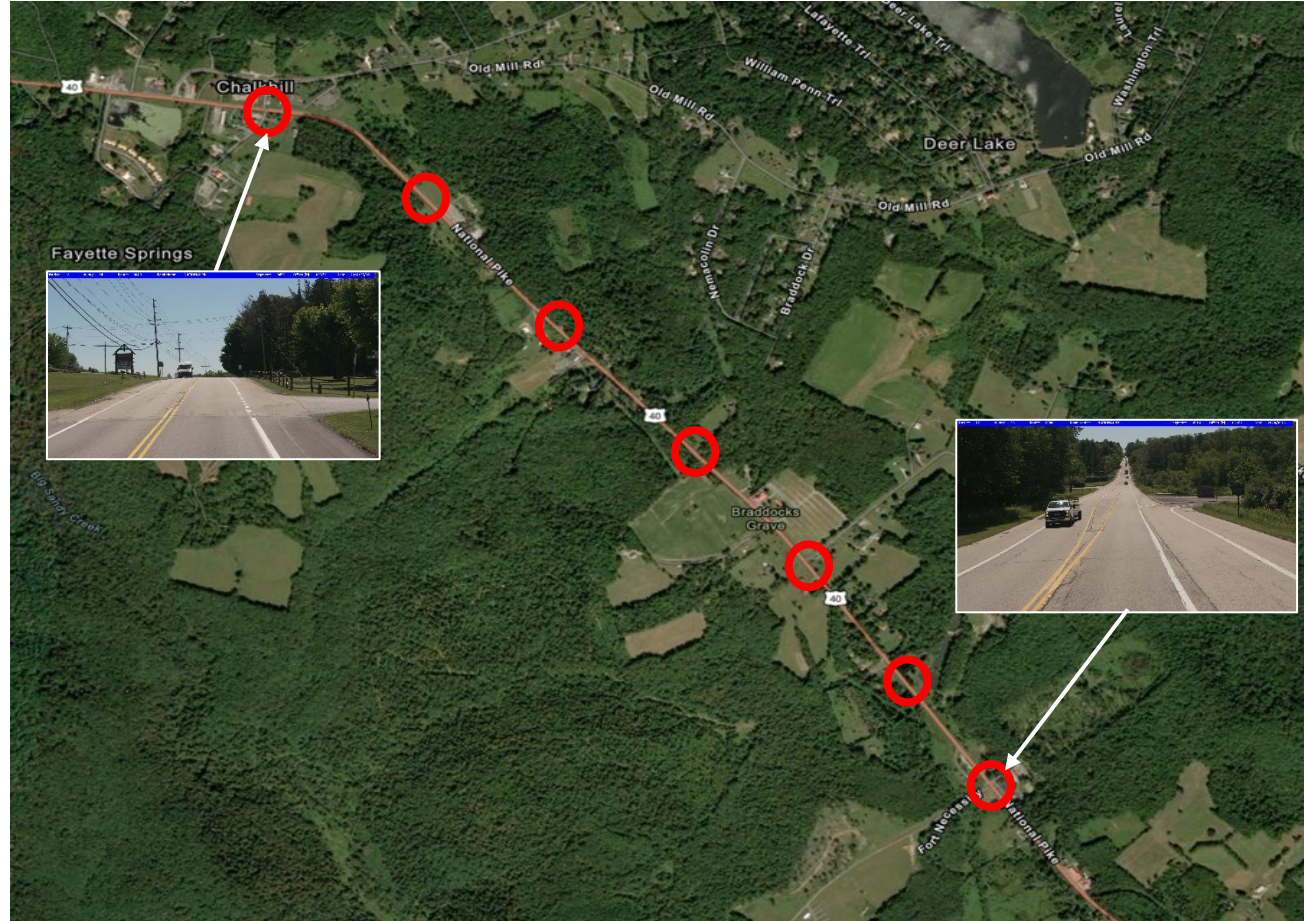


Pennsylvania
Department of Transportation

APRIL, 2026

LOCATION: SR 40 – FAYETTE COUNTY

Begin: Seg 0460 Offset 0000



Paving Limit: Seg/Off
0510/1120

End Limit: Seg/Off 0510/1850

LOCATION: SR 2016 – GREENE COUNTY



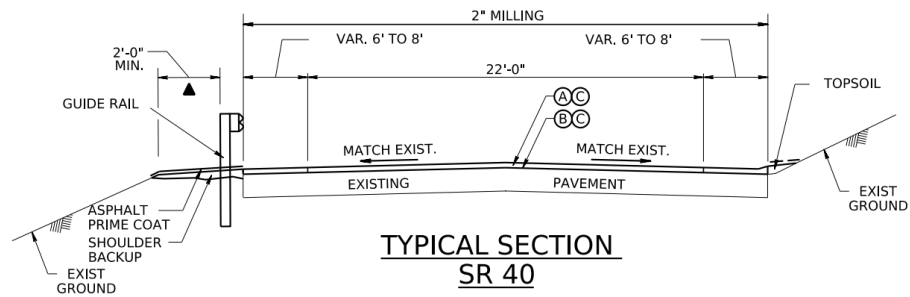
Begin: Seg 0070 Offset 1986

End: Seg 0080 Offset 3356

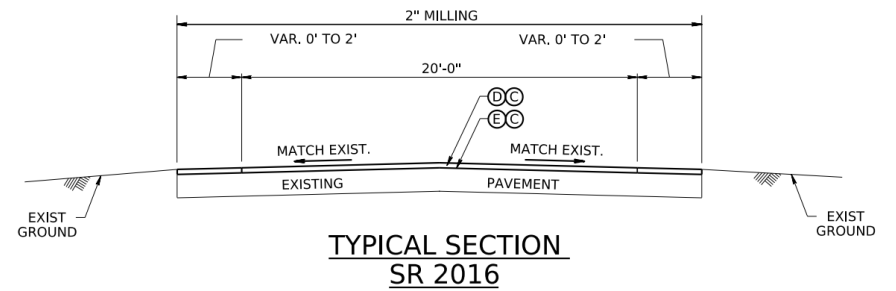
PURPOSE & NEED

- The purpose of this project is to improve and extend the useful life of the existing pavement as well as improving the rideability and safety.
- Work at both locations is to consist of milling, paving, as-directed base repair, signing, pavement markings, delineation, minor drainage, and new guide rail.
 - Additionally, the Flashing Warning Device at the SR 88 and SR 2016 intersection will be replaced.
- Work will be completed using single-lane closures with flaggers.
- Detours are not anticipated for this project.

ROADWAY TYPICAL SECTIONS



SEG. 0460 OFFSET 0000 TO SEG. 0510 OFFSET 1120



SEG. 0070 OFFSET 1986 TO SEG. 0080 OFFSET 3356

PROJECT MILESTONES

- Advertisement Date: June 25, 2026
- Letting Date: July 30, 2026
- Construction: September 2026 – June 30, 2027

CONTACT INFORMATION

Project Manager: Derek Johnson, PE

PennDOT Engineering District 12-0
825 N. Gallatin Ave, Ext.
Uniontown, PA 15401-2105

Phone: 724-439-7384

Email: Derejohnso@pa.gov

FOLLOW PENNDOT



www.pa.gov/penndot



www.pa.gov/dmv



PennsylvaniaDepartmentofTransportation



PennDOTNews



PennsylvaniaDOT



PennDOTSec



[/company/PennDOT](https://www.linkedin.com/company/PennDOT)



PennDOTSec



PennsylvaniaDOT



Pennsylvania
Department of Transportation