

S.R. 2046-A17

STREETS RUN ROAD IMPROVEMENT PROJECT

**BALDWIN, WEST MIFFLIN, AND WHITEHALL BOROUGHES, CITY
OF PITTSBURGH, ALLEGHENY COUNTY**



JANUARY 2026



Pennsylvania
Department of Transportation

PROJECT TEAM

- Design Division

- Direct questions to:

Gary Castelucci, P.E., Design Project Manager

Phone: (412) 294-1555 | Email: gcastelucc@pa.gov

Engineering District 11-0

45 Thoms Run Road

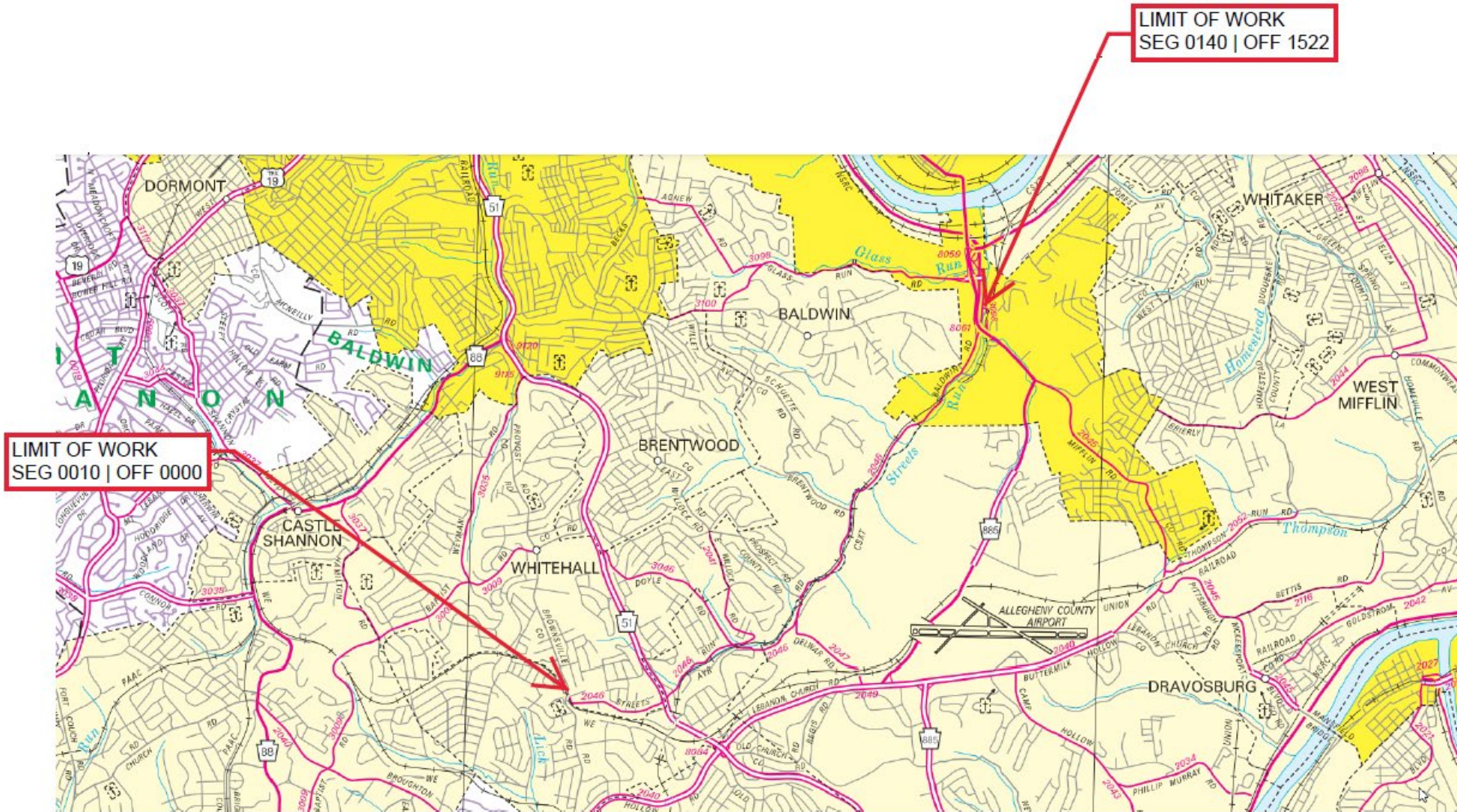
Bridgeville, PA 15017

- Mark Young – District Environmental Planning Manager
 - Bob Billick – Assistant Environmental Manager (NEPA)

- Press Office

- Steve Cowan – District Press Officer

PROJECT LOCATION



Project extends full length of SR 2046 (Streets Run Road / Baldwin Road) from the intersection with Brownsville Road to the ramp to SR 885

Project Length = 4.6 miles

PROPOSED PROJECT IMPROVEMENTS

- 2.25" mill and resurface of existing asphalt roadway
- Full width roadway reconstruction between SR 885 ramps
- Minor bridge preservation work to three structures within project limits
- Construction of three soldier pile and lagging walls to protect the failing slope adjacent to roadway. Additional reconstruction and drainage improvements will occur within these areas as well.
 - Location 1: Across from Option Independent Fire Company
 - Location 2: Between Prospect Road and Hoff's All Season Supply
 - Location 3: Between SR 885 ramps
- Additional scope items include minor drainage improvements, guide rail updates, traffic signal work, updates to signing, pavement markings, delineation, and other miscellaneous construction.

TENTATIVE PROJECT SCHEDULE

- Estimated Construction Start = Spring 2027
- Short-term, off-peak lane restrictions for miscellaneous roadway and structure work = Spring 2027 to Fall 2027; Spring 2028 to Fall 2028
- Long-term, single lane alternating traffic for wall construction = Spring 2027 to Fall 2027
- Long-term closure and detour of SR 2046 for wall construction (Between Prospect Rd and Hoff's All Season Supply) = Spring 2028 to Summer 2028
- Estimated Construction Completion = Fall 2028

WALL LOCATION 1



- Approximate limits of work for construction of a soldier pile and lagging wall (300' length).
- Traffic will be controlled with temporary signals and single-lane alternating traffic.
- Estimated duration of traffic impacts is 2-3 months. Work anticipated to occur in 2027.

WALL LOCATION 2



- Approximate limits of work for construction of a soldier pile and lagging wall (650' length).
- SR 2046 (Streets Run Road) will be closed and detoured with only local traffic permitted to travel westbound through the work area.
- Estimated duration of traffic impacts is 4-5 months. Work anticipated to occur in 2028.

WALL LOCATION 3



- Approximate limits of work for construction of a soldier pile and lagging wall (400' length). Full width roadway reconstruction will also occur in this area (1,100' length).
- Traffic will be controlled with temporary signals and single-lane alternating traffic
- Estimated duration of traffic impacts is 3-4 months. Work anticipated to occur in 2027.

PROPOSED DETOUR ROUTE



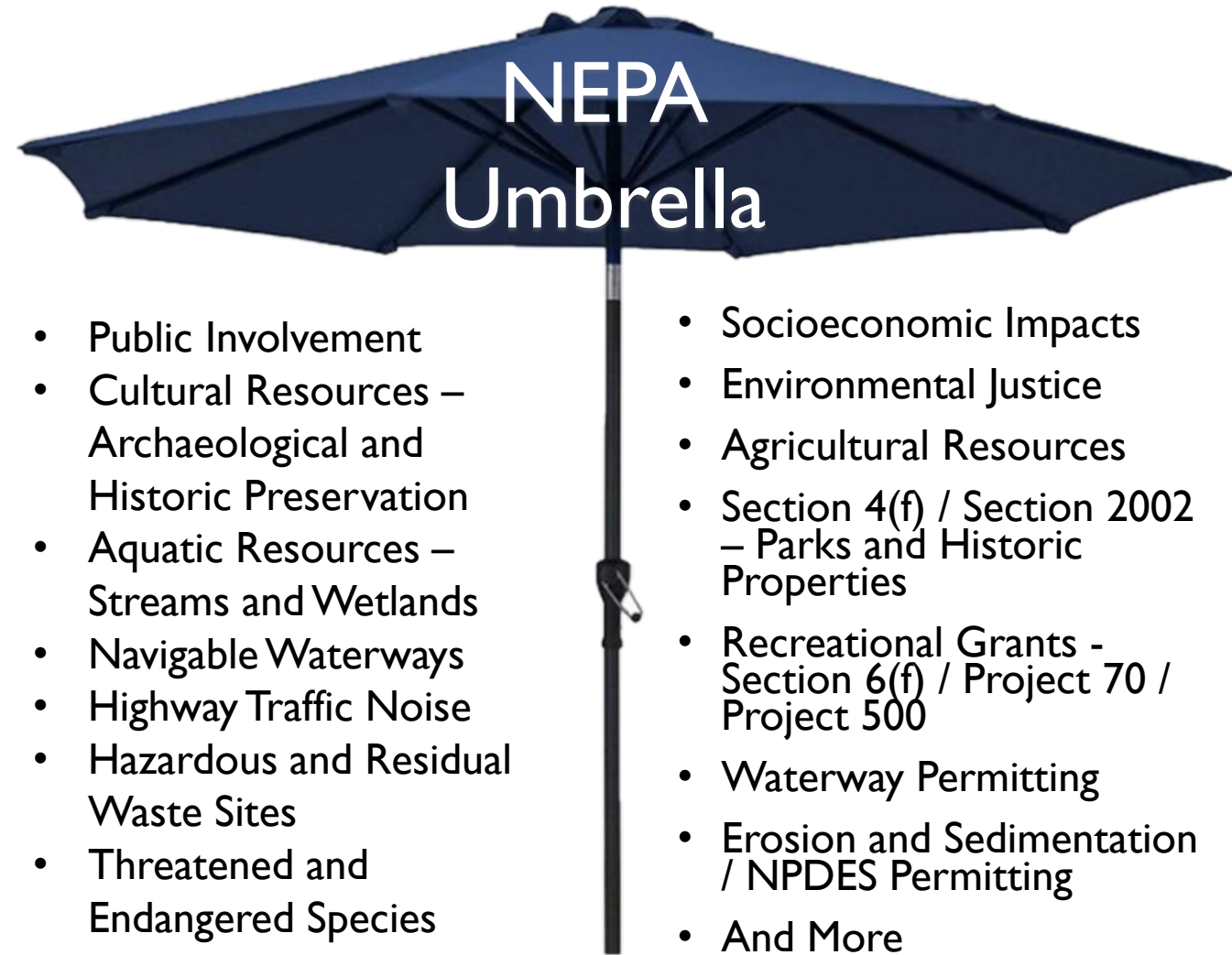
- Detour will utilize SR 2046 (Streets Run Road / Baldwin Road), SR 51 (Clairton Boulevard), SR 2040 (Lebanon Church Road), and SR 885 (Lebanon Road / Mifflin Road).
- Local traffic only permitted between Prospect Road and Brentwood Road. One-way westbound traffic within work area between Hoff's All Season Supply and Prospect Road. Detour estimated to be in place for 4-5 months.
- Total detour loop length = 9 miles

PRELIMINARY / UNOFFICIAL

NATIONAL ENVIRONMENTAL POLICY ACT (NEPA)

Public outreach begins with PennDOT Connects and extends into the **NEPA** (National Environmental Policy Act) process:

- PennDOT Connects is a project planning and development approach that engages local and planning partners by collaborating with stakeholders before project scopes are developed.
- NEPA requires agencies to integrate environmental values into their decision-making processes by considering the environmental impacts of their proposed actions and reasonable alternatives to those actions
- NEPA also includes public involvement activities and gathering feedback from the public
- This PowerPoint presentation is part of District I I-0's coordination with the public to obtain feedback on the project and to meet NEPA requirements.



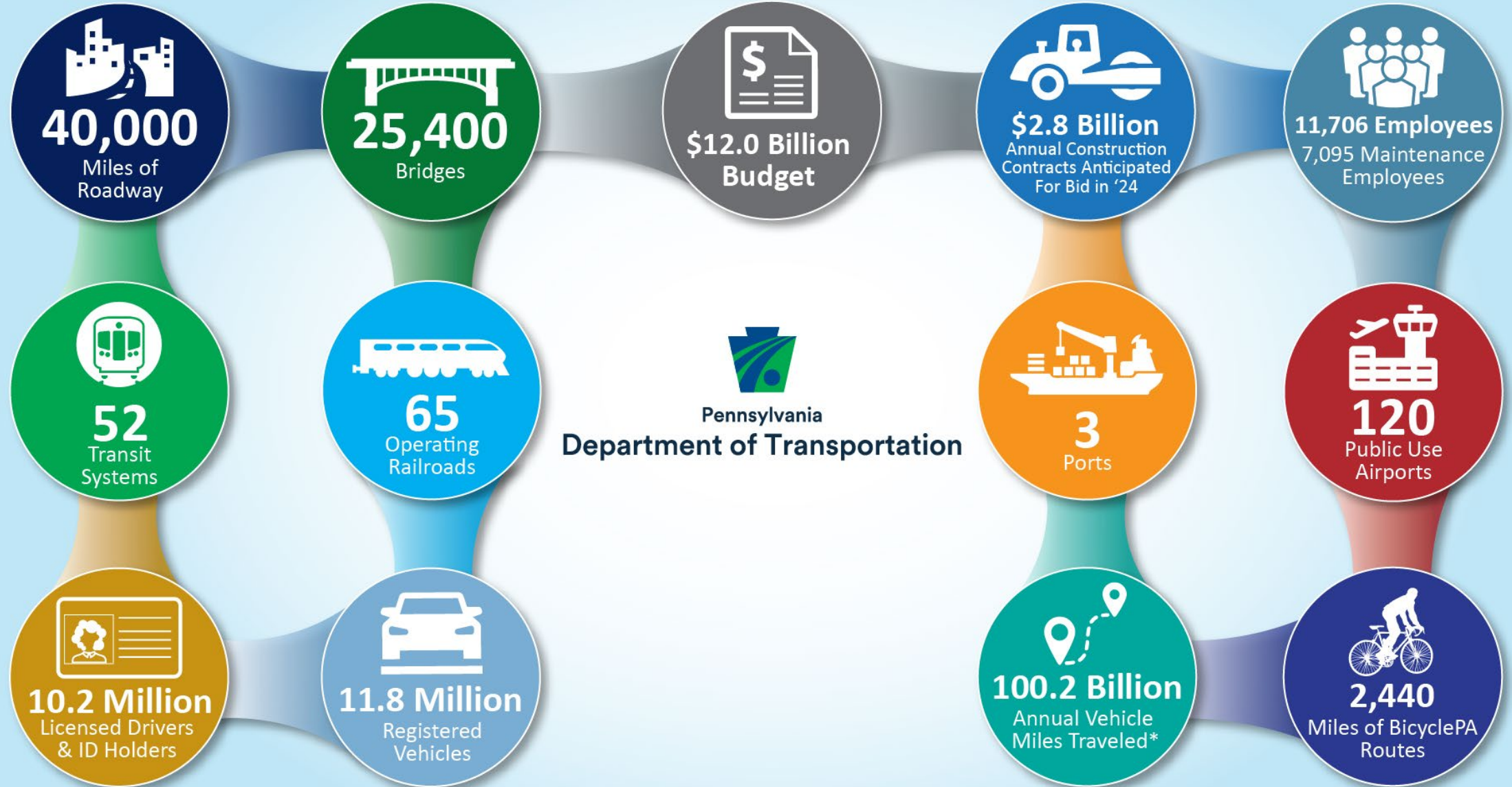
PROJECT SURVEY

- To provide feedback on the project, please complete the project survey available on the project website
- On the right side of the screen, under Resources, click the "Submit a Comment" button.

Resources

Submit a Comment →

PENNDOT BY THE NUMBERS



FOLLOW PENNDOT



www.PennDOT.pa.gov



www.DMV.pa.gov



[PennsylvaniaDepartmentofTransportation](#)



[PennDOTNews](#)



[PennsylvaniaDOT](#)



[PennDOTSec](#)



[/company/PennDOT](#)



[PennDOTSec](#)



[PennsylvaniaDOT](#)



Pennsylvania
Department of Transportation