

PENNDOT PROJECT INFORMATION

Old Pulaski Road
over
Tributary to Shenango River
Culvert Replacement
SR 4005, Section L05
Pulaski Township,
Lawrence County



PROJECT TEAM

- Design Division
 - Direct questions to:
Jason Cook- Project Manager at 412-429-4901
Engineering District 11-0
45 Thoms Run Road
Bridgeville, PA 15017
or at jascook@pa.gov
 - Mark J.Young - District Environmental Manager
 - Robert Billick – Assistant Environmental Supervisor - NEPA
- Press Office
 - Steve Cowan - District Press Officer

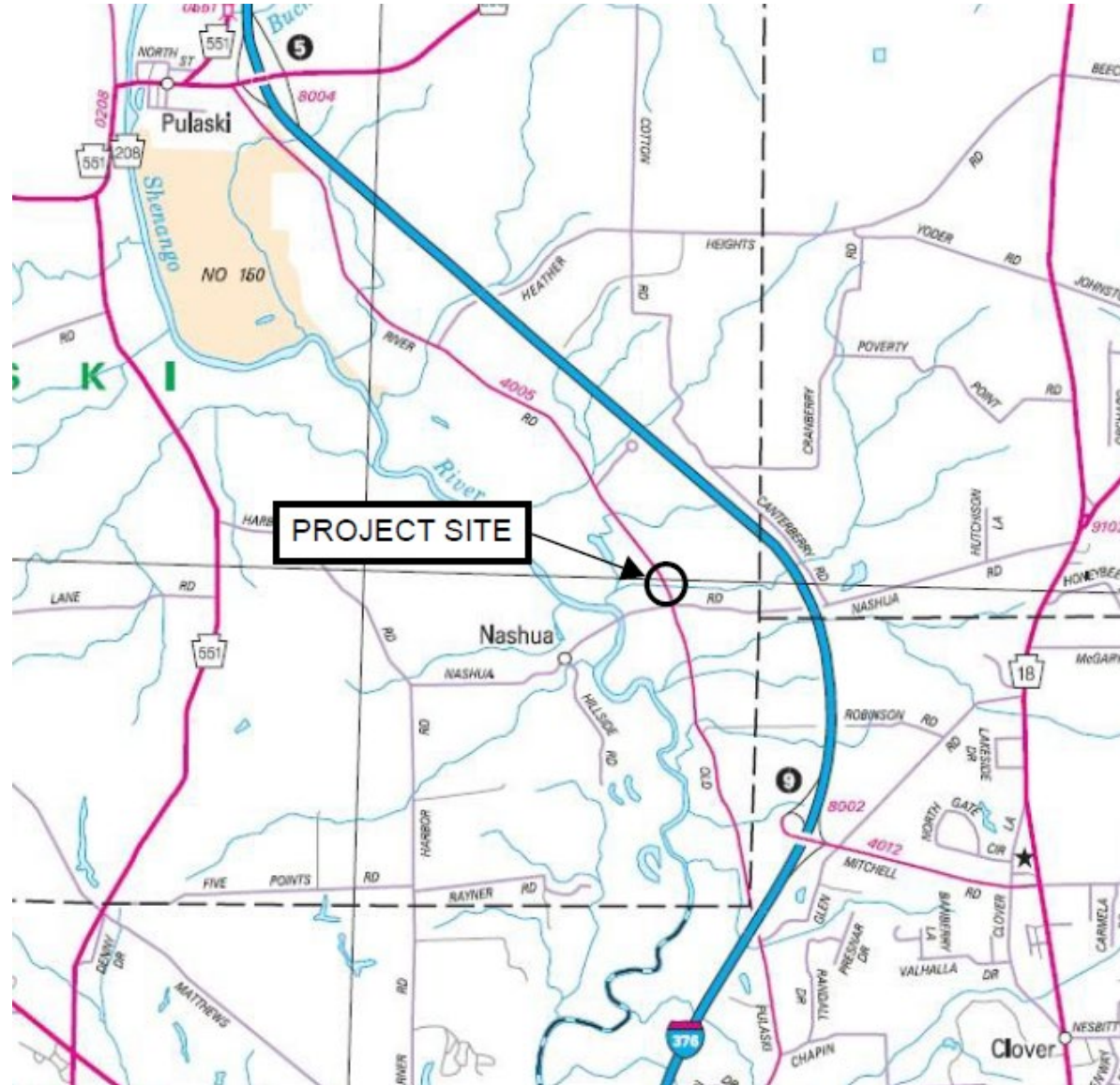


PURPOSE OF PRESENTATION & PROJECT INFORMATION

- SR 4005 Section L05 (Old Pulaski Road) Project
 - The purpose of this presentation is to introduce the project to the public, gather feedback, and present the proposed design.
 - The purpose of the project is to provide a sustainable crossing over a Unnamed Tributary to the Shenango River that addresses the project needs and carries anticipated traffic demand.
 - Culvert Replacement over Tributary to Shenango River



PROJECT LOCATION



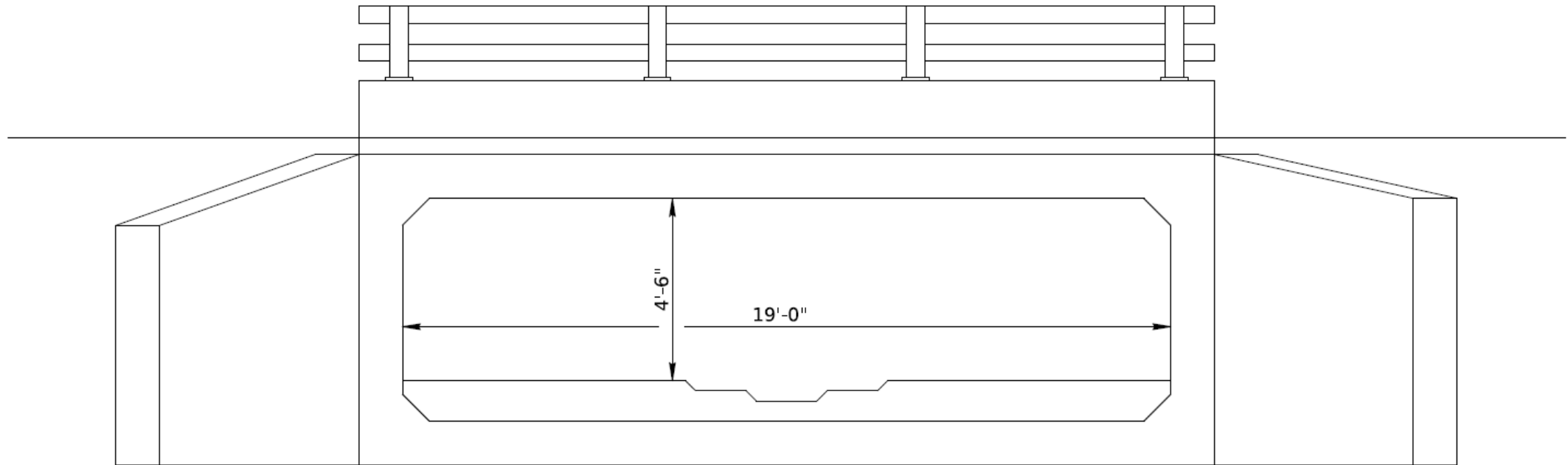
PROPOSED PROJECT IMPROVEMENTS

- Remove existing steel arch culvert and replace with a new precast concrete box culvert.
- Minor approach roadway reconstruction to tie into the new structure.
- Temporary Construction Easements will be required to accommodate construction of the new culvert.
- Construction is anticipated to begin spring/summer of 2027.
 - Road will be closed and detoured during construction.
 - Road closure anticipated to be approximately 60 calendar days.
 - Proposed detour is approximately 15 miles.



PROPOSED DESIGN

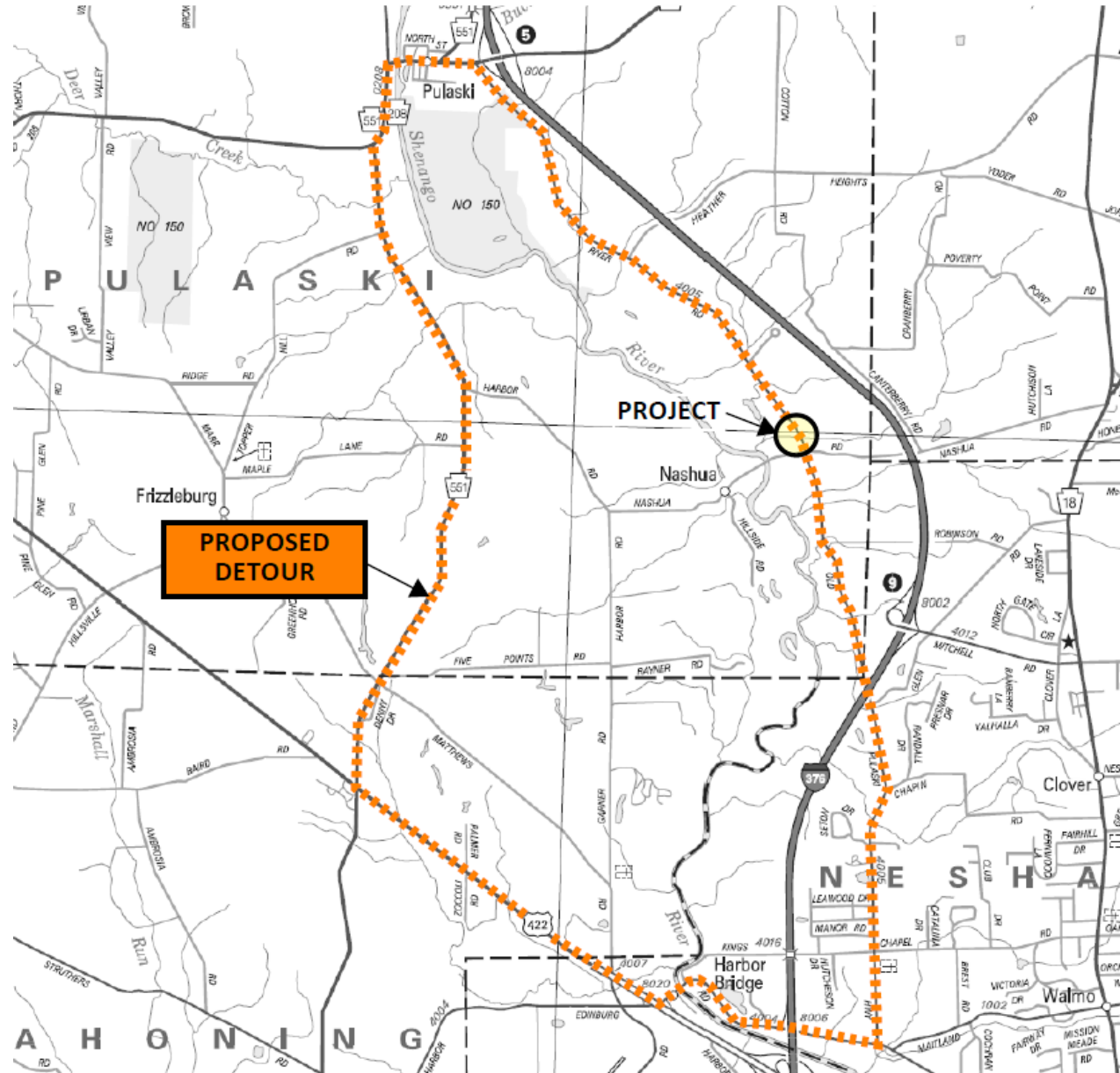
PRELIMINARY



PRECAST CONCRETE BOX CULVERT

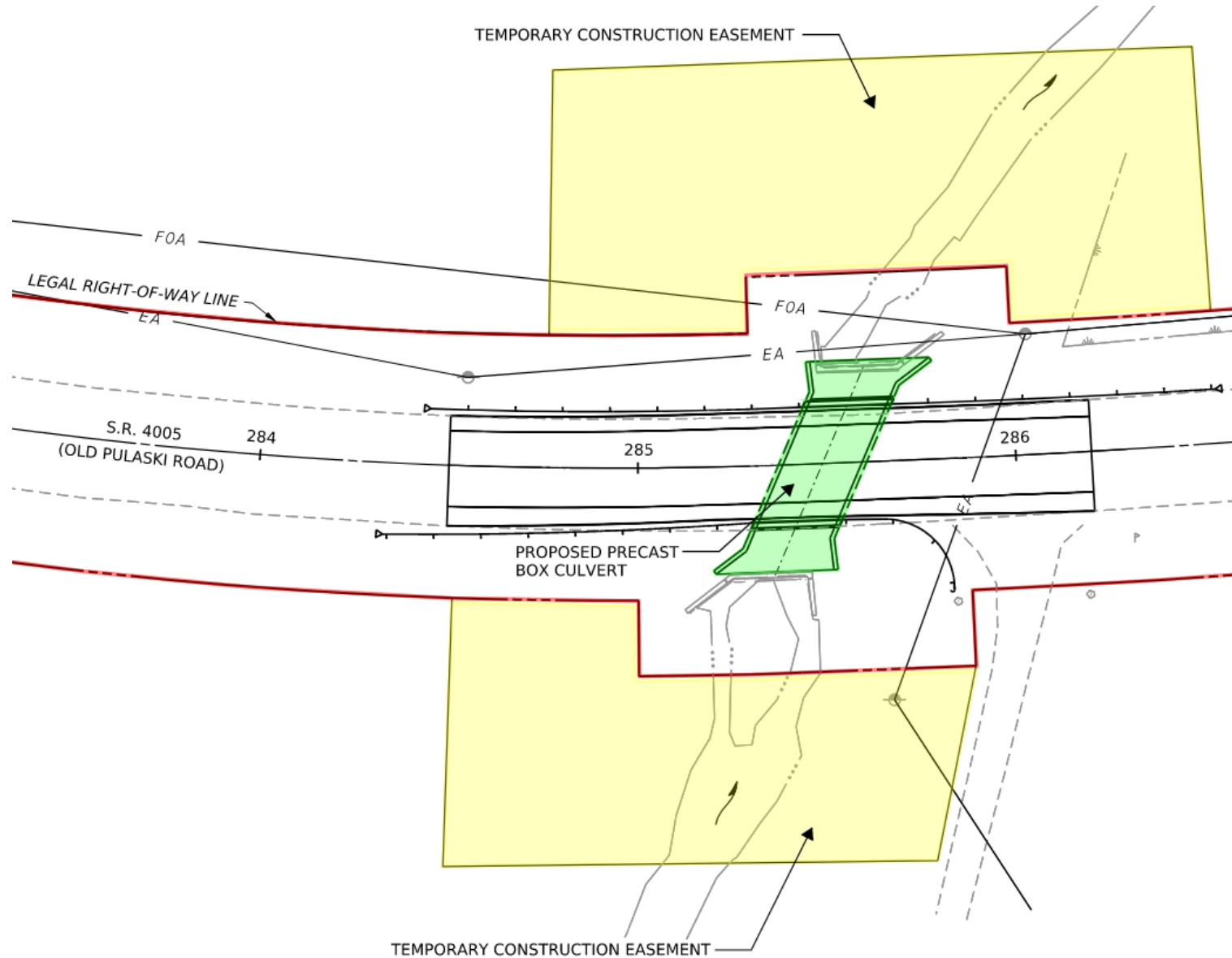


PROPOSED DETOUR



PROPOSED WORK AREA

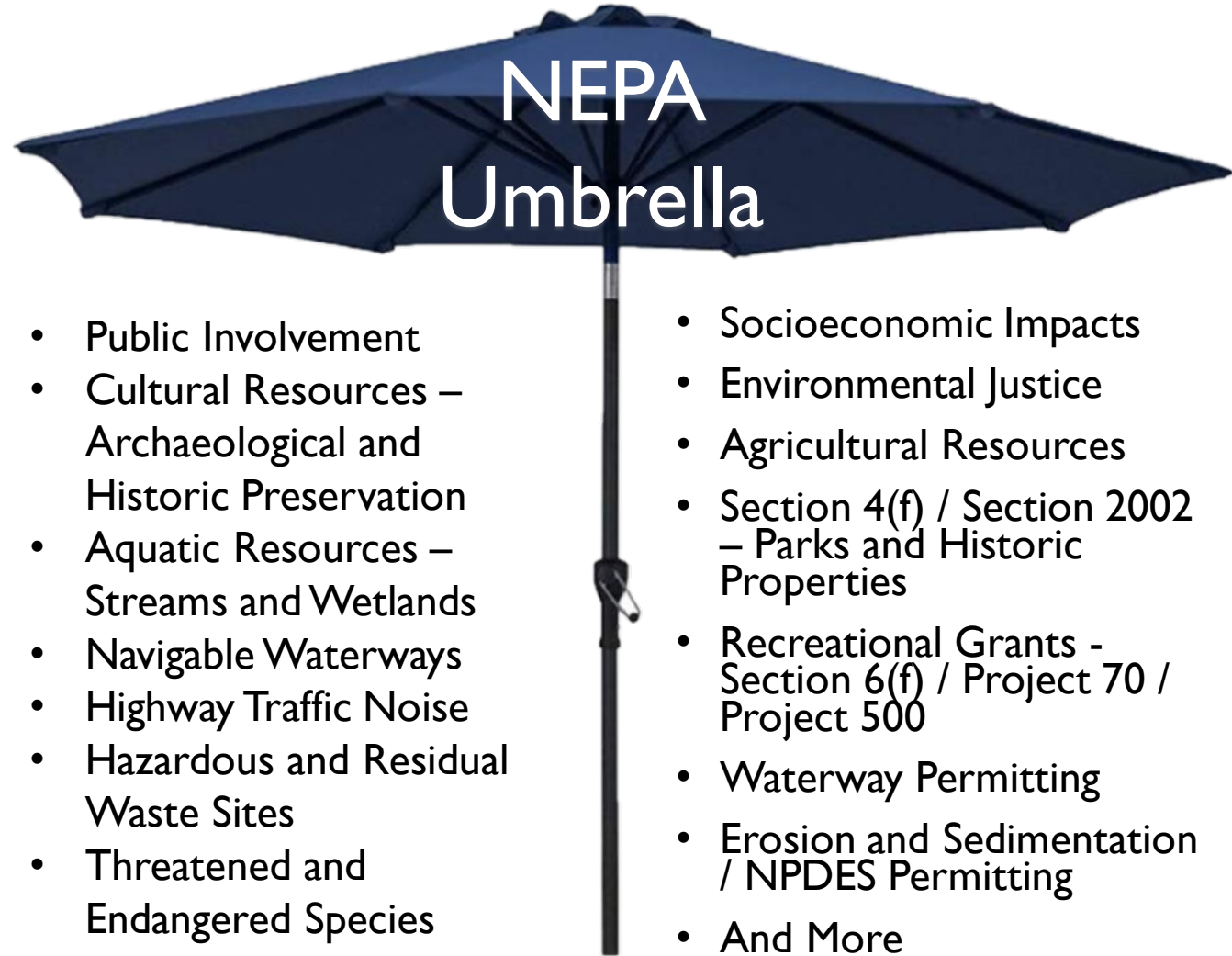
PRELIMINARY



NATIONAL ENVIRONMENTAL POLICY ACT (NEPA)

Public outreach begins with PennDOT Connects and extends into the **NEPA** (National Environmental Policy Act) process:

- PennDOT Connects is a project planning and development approach that engages local and planning partners by collaborating with stakeholders before project scopes are developed.
- NEPA requires agencies to integrate environmental values into their decision-making processes by considering the environmental impacts of their proposed actions and reasonable alternatives to those actions
- NEPA also includes public involvement activities and gathering feedback from the public
- This PowerPoint presentation is part of District I I-0's coordination with the public to obtain feedback on the project and to meet NEPA requirements.



PROJECT SURVEY

- To provide feedback on the project, please complete the project survey available on the project website
- On the right side of the screen, under Resources, click the “Submit a Comment” button.

