

SR 3002 A02 COUNTRY CLUB DRIVE OVER SR 19 BRIDGE REHABILITATION

**UPPER ST. CLAIR TOWNSHIP,
ALLEGHENY COUNTY**

APRIL 2025



Pennsylvania
Department of Transportation

PROJECT TEAM

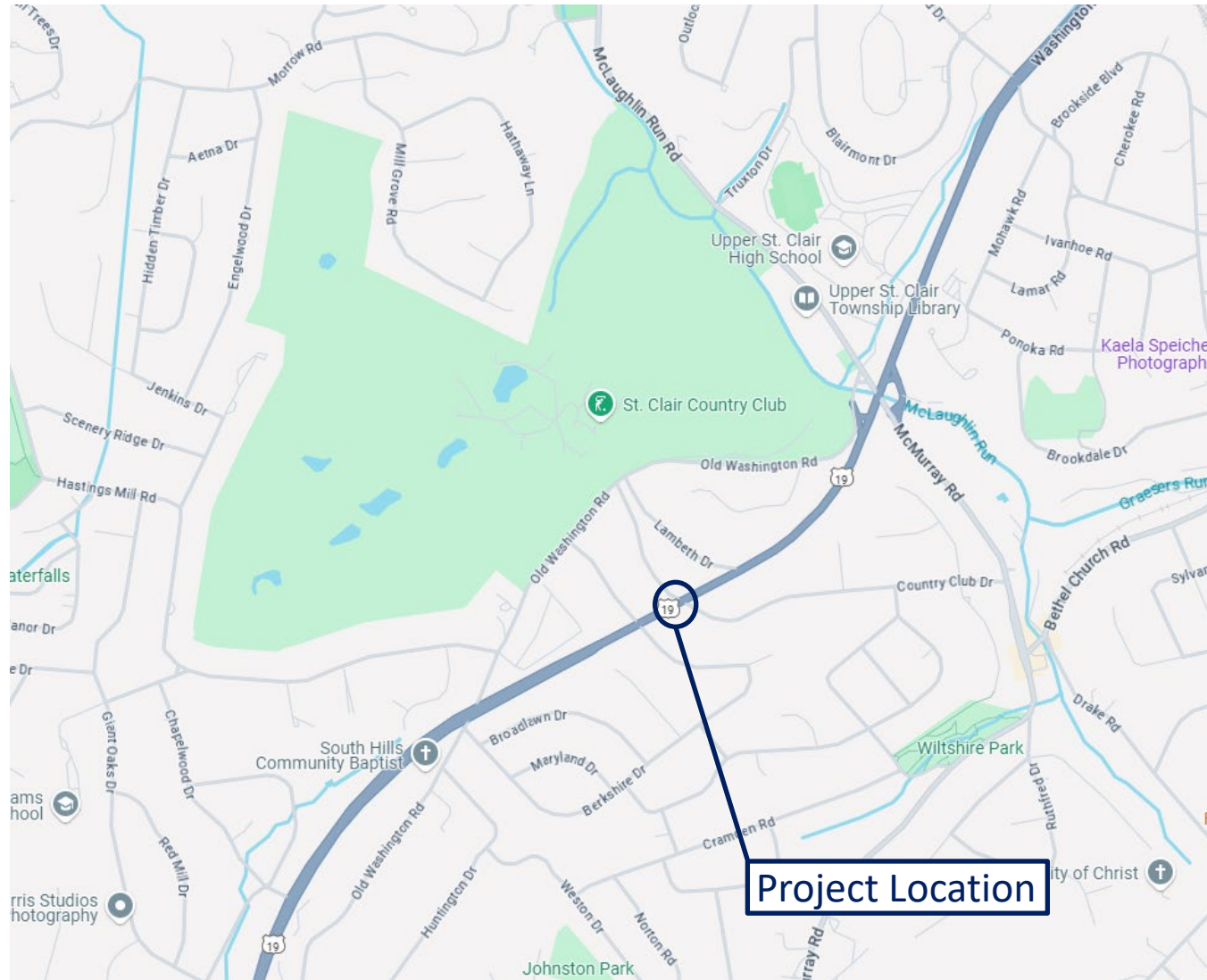
- Design Division
 - Direct questions to:
Dominic Altieri, District Project Manager at 412-429-4863
Engineering District 11-0
45 Thoms Run Road
Bridgeville, PA 15017
or doaltieri@pa.gov
 - Mark Young – District Environmental Manager
 - Todd Crouch - Environmental Supervisor
- Press Office
 - Steve Cowan – District Press Officer

PROJECT INTRODUCTION

- SR 3002 A02 (Country Club Drive) Bridge Rehabilitation Project
 - The purpose of this presentation is to introduce the project to the public, gather feedback, and present the proposed design.
 - The purpose of the project is to provide a safe crossing on SR 3002 (Country Club Drive) over SR 0019 meeting current design standards.
 - Portions of the existing cast-in-place reinforced concrete rigid frame will be removed and replaced.



PROJECT LOCATION

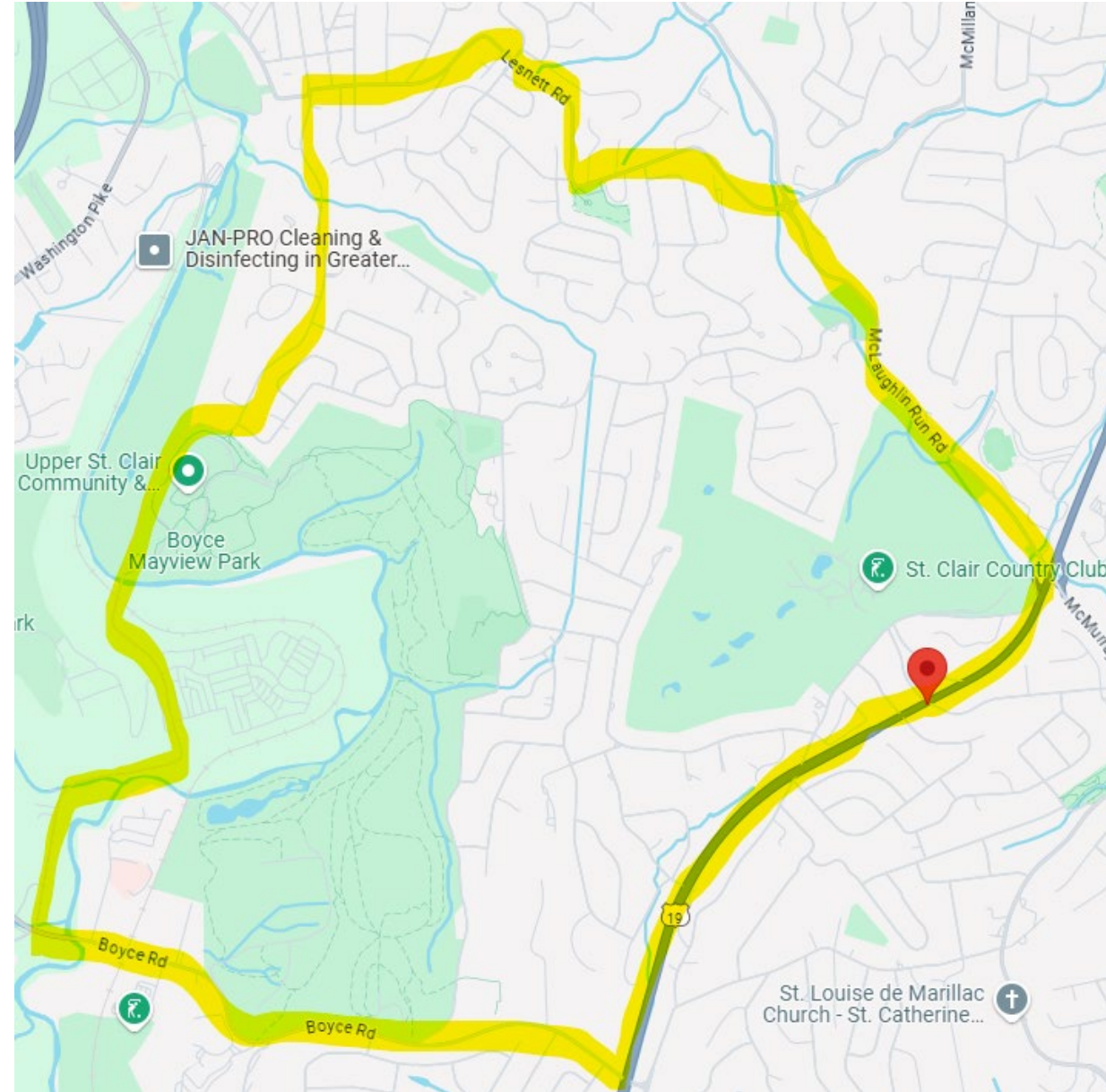


PROPOSED PROJECT IMPROVEMENTS

- Replace deteriorating reinforced concrete rigid frame carrying SR 3002 (Country Club Drive) over SR 19
- Reconstruct the asphalt approaches of Country Club Drive on both sides of the structure
- Mill and pave portions of SR 19 under structure
- No utility impacts
- No right-of-way takes or temporary construction easements
- Upgrade guide rail to bridge barrier connections
- Country Club Drive detour will remain in place throughout construction
- Construction is anticipated to start fall of 2025
- SR 19 will need to be detoured for extended weekend work (3-4 days)

PROPOSED DETOUR – CAR

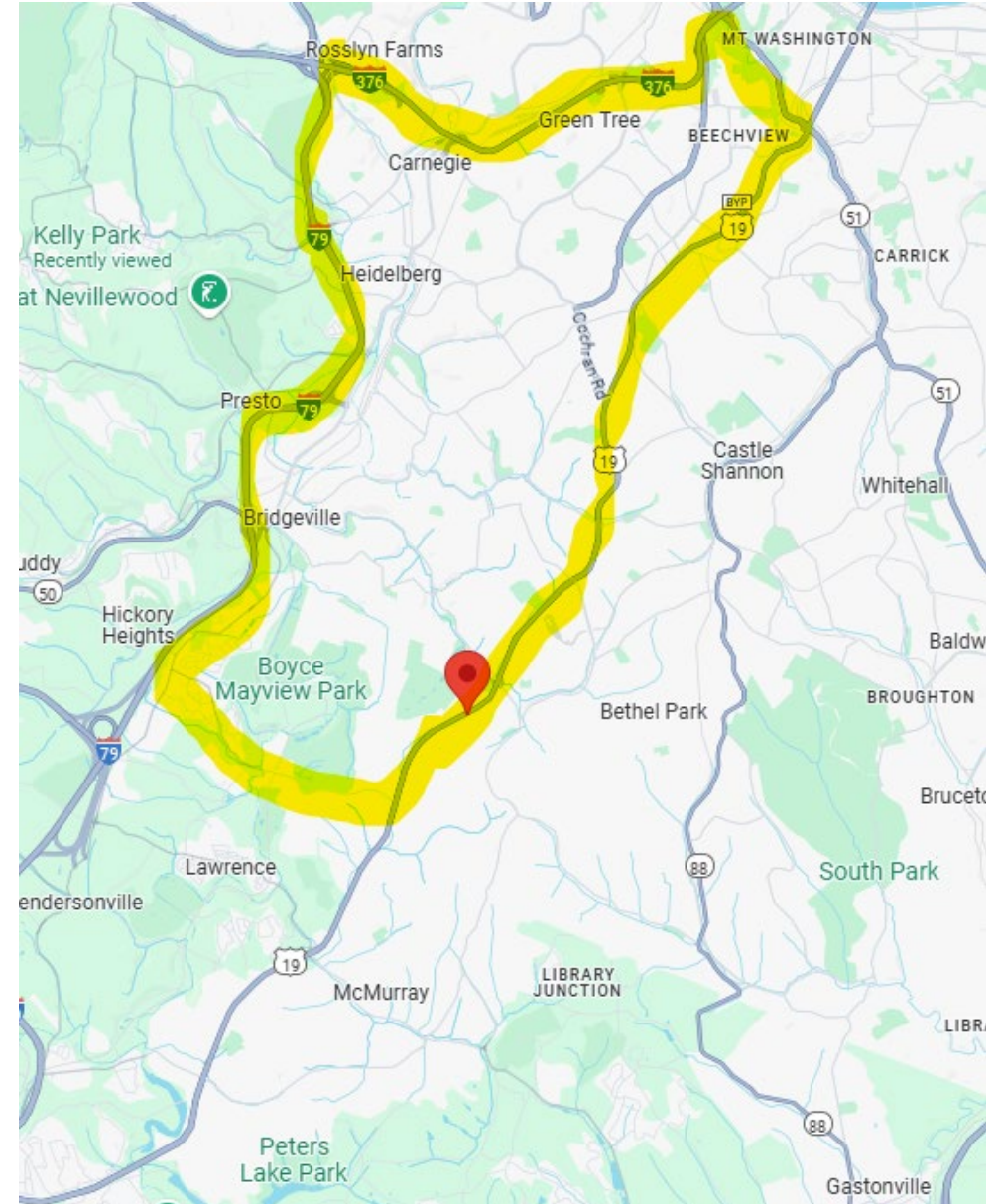
- Car detour is approximately 8.5 miles
- Proposed detour:
 - Boyce Road to
 - Mayview Road to
 - Lesnett Road to
 - McLaughlin Run Road



PROPOSED DETOUR – TRUCK

Truck detour is approximately 26 miles

- Proposed detour:
 - Boyce Road to
 - Washington Pike to
 - I-79 to
 - I-376 to
 - SR 19 Truck to
 - SR 19



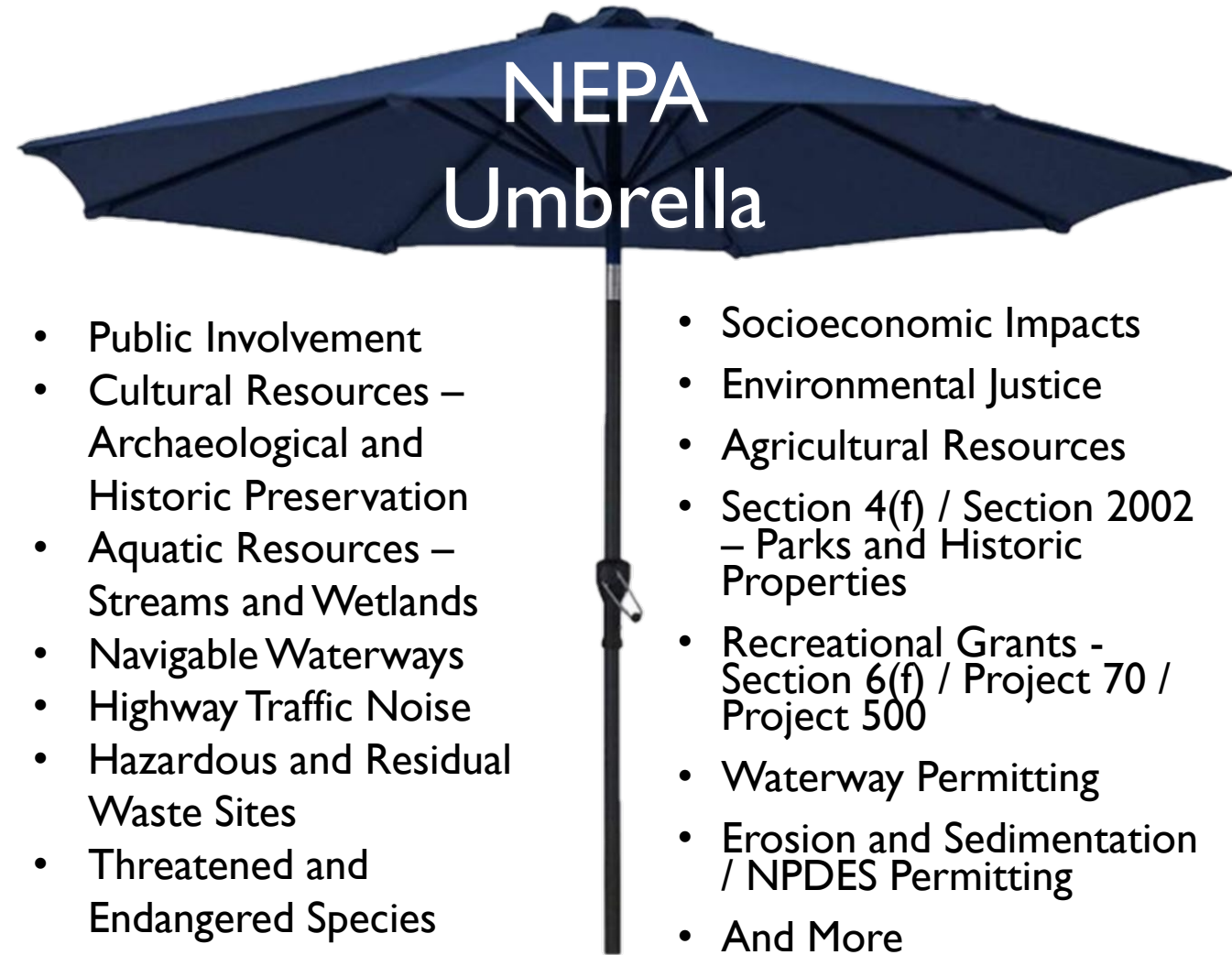
UNOFFICIAL – PRELIMINARY



NATIONAL ENVIRONMENTAL POLICY ACT (NEPA)

Public outreach begins with PennDOT Connects and extends into the **NEPA** (National Environmental Policy Act) process:

- PennDOT Connects is a project planning and development approach that engages local and planning partners by collaborating with stakeholders before project scopes are developed.
- NEPA requires agencies to integrate environmental values into their decision-making processes by considering the environmental impacts of their proposed actions and reasonable alternatives to those actions
- NEPA also includes public involvement activities and gathering feedback from the public
- This PowerPoint presentation is part of District I I-0's coordination with the public to obtain feedback on the project and to meet NEPA requirements.



PROJECT COMMENT FORM

- 1) Click the “**Submit a Comment**” tile under Contact Information on the right side of the screen.
- 2) Select “**Country Club Drive Bridge Rehabilitation**” from the project (first) dropdown box

I) Click Here -

Contact Information

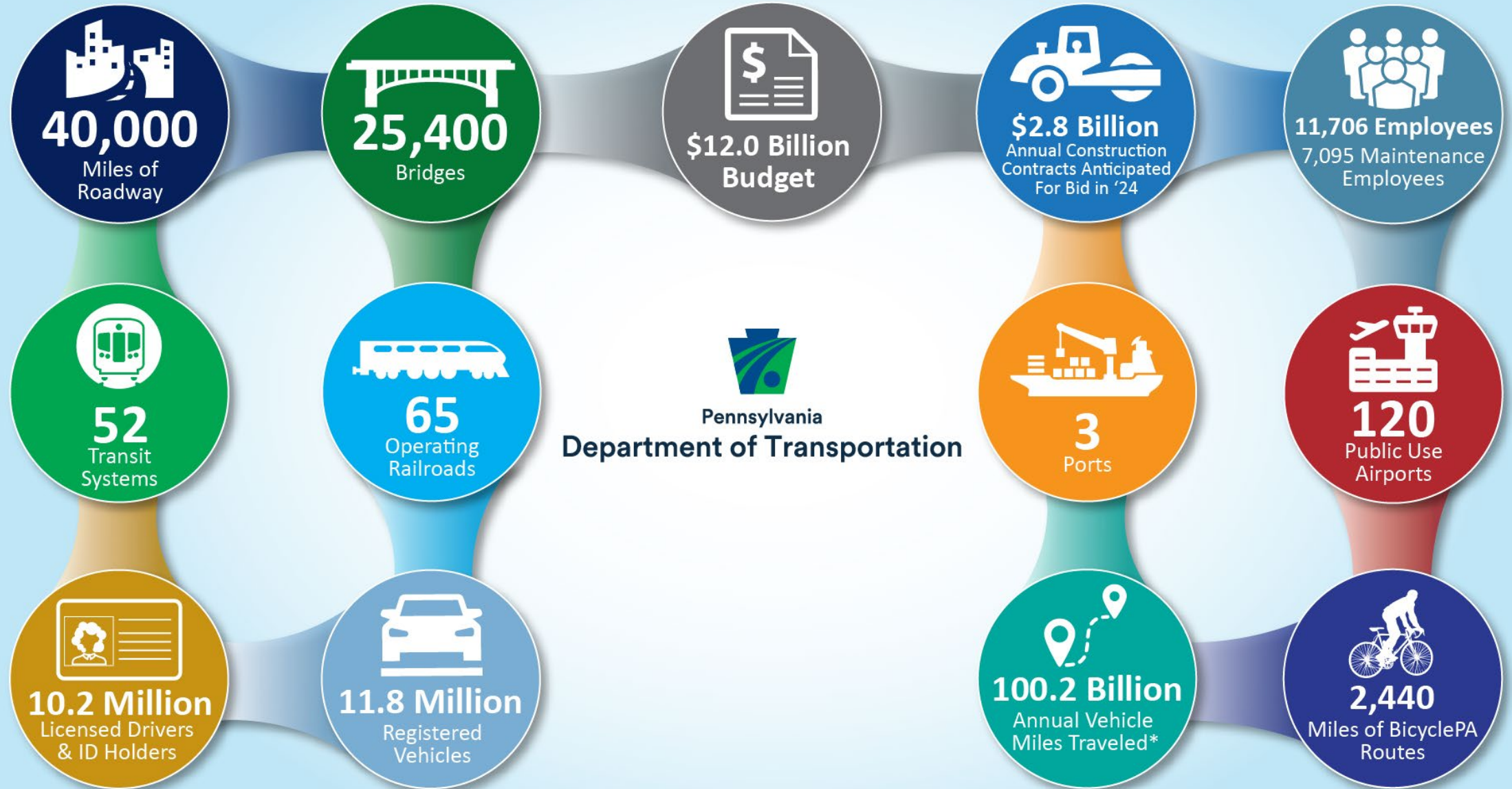
Jarod Grafton, P.E.
Project Manager
(412) 429-4906
jgrafton@pa.gov

Mark Young
Environmental Planning
Manager
(412) 429-4858
markyoung@pa.gov

Steve Cowan
Press Officer
(412) 334-5436
stcowan@pa.gov

Submit a Comment →

PENNDOT BY THE NUMBERS



FOLLOW PENNDOT



www.PennDOT.pa.gov



www.DMV.pa.gov



[PennsylvaniaDepartmentofTransportation](#)



[PennDOTNews](#)



[PennsylvaniaDOT](#)



[PennDOTSec](#)



[/company/PennDOT](#)



[PennDOTSec](#)



[PennsylvaniaDOT](#)



Pennsylvania
Department of Transportation