

# **S.R. 0168, SECTION B20 & S.R. 0351, SECTION B19**

## **PA 168 OVER JORDAN RUN BRIDGE REPLACEMENT AND PA 168/PA 351 INTERSECTION IMPROVEMENT PROJECT**

**NEW GALILEE BOROUGH,  
BEAVER COUNTY**

NOVEMBER 2025



Pennsylvania  
Department of Transportation

# PROJECT TEAM

- Design Division

- Direct questions to:

Dominic Altieri, District Project Manager at 412-429-4863

Engineering District 11-0

45 Thoms Run Road

Bridgeville, PA 15017

or [doaltieri@pa.gov](mailto:doaltieri@pa.gov)

- Mark Young – District Environmental Manager
    - Bob Billick – Assistant Environmental Manager (NEPA)



- Press Office

- Steve Cowan – District Press Officer

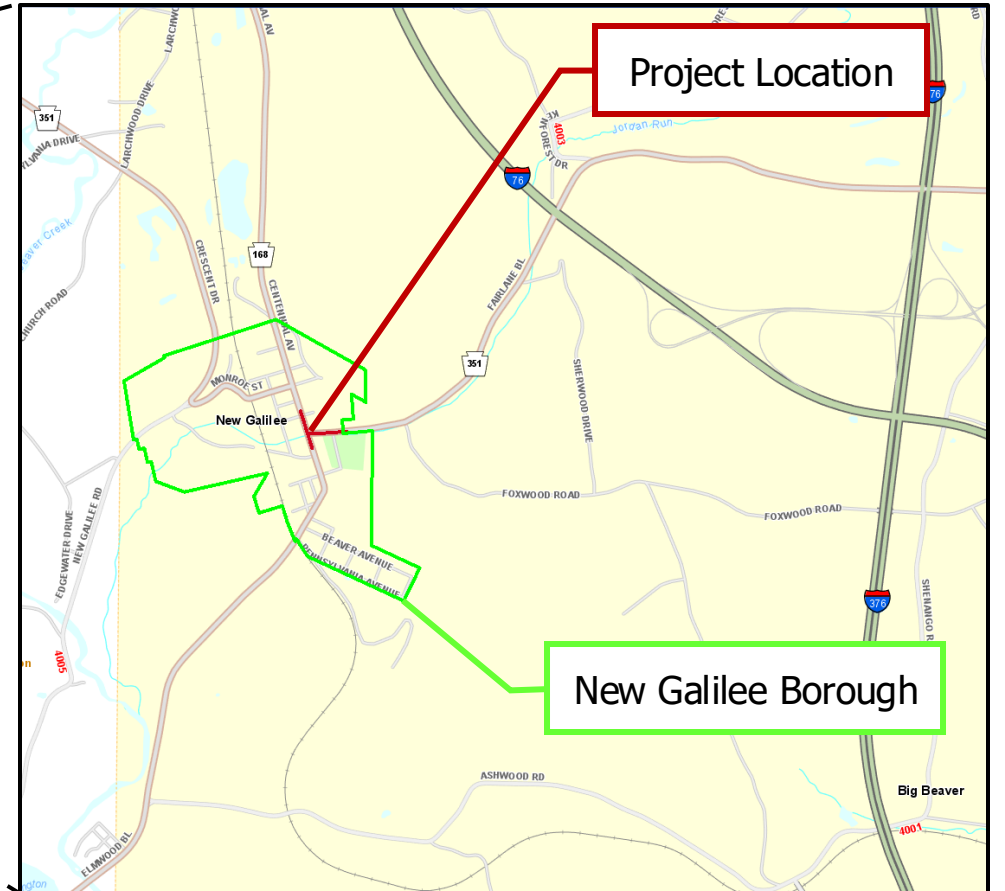
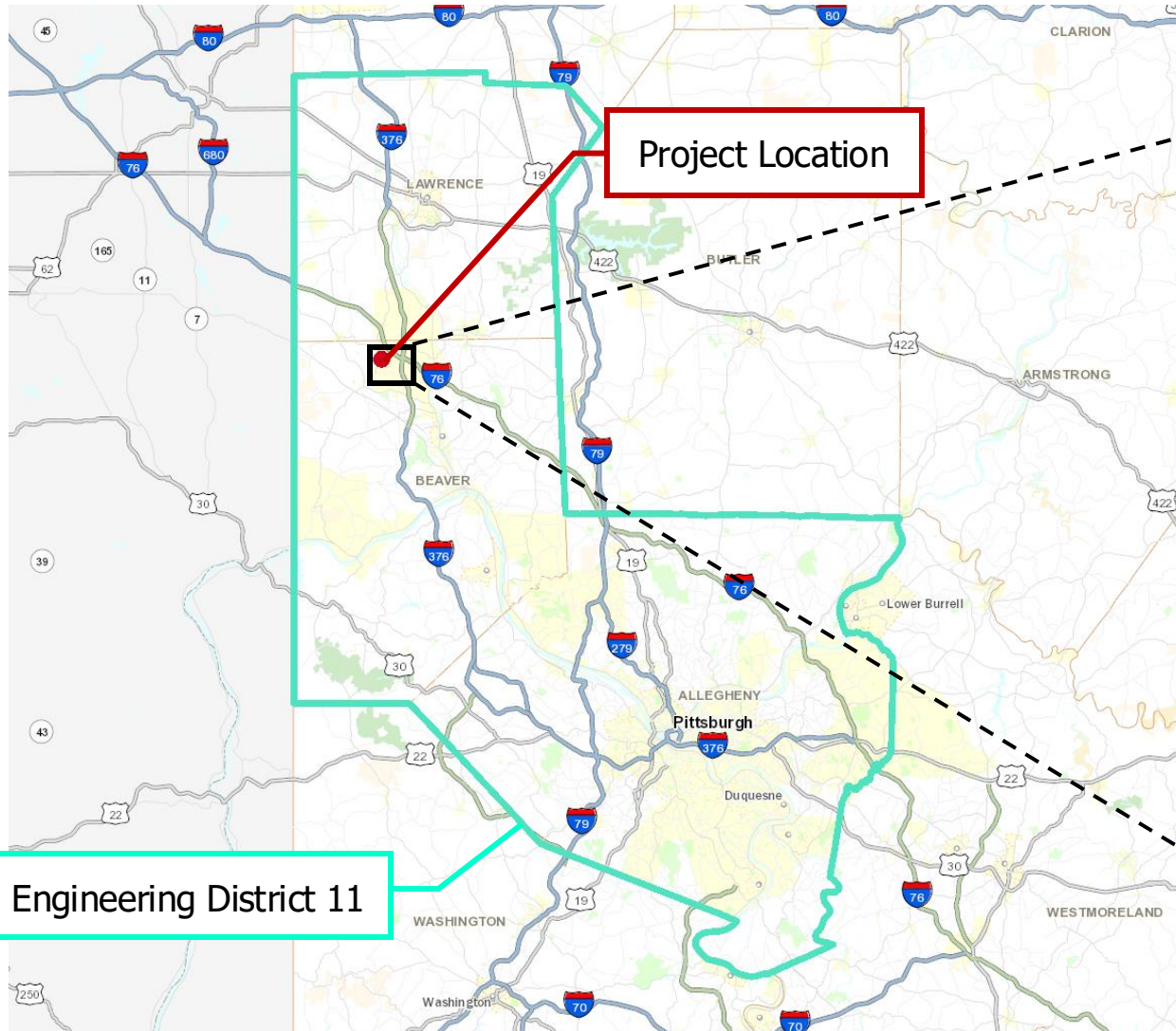
# PROJECT INTRODUCTION

- The purpose of this presentation is to introduce the project to the public, gather feedback, and present the proposed design.



- The purpose and need of the project:
  - Provide a sustainable crossing over Jordan Run that carries anticipated traffic demand,
  - Address facility deficiencies relating to the bridge (e.g., deterioration of concrete elements), and,
  - Address geometric deficiencies of the intersection to improve sub-standard vehicle turning movements.

# PROJECT LOCATION

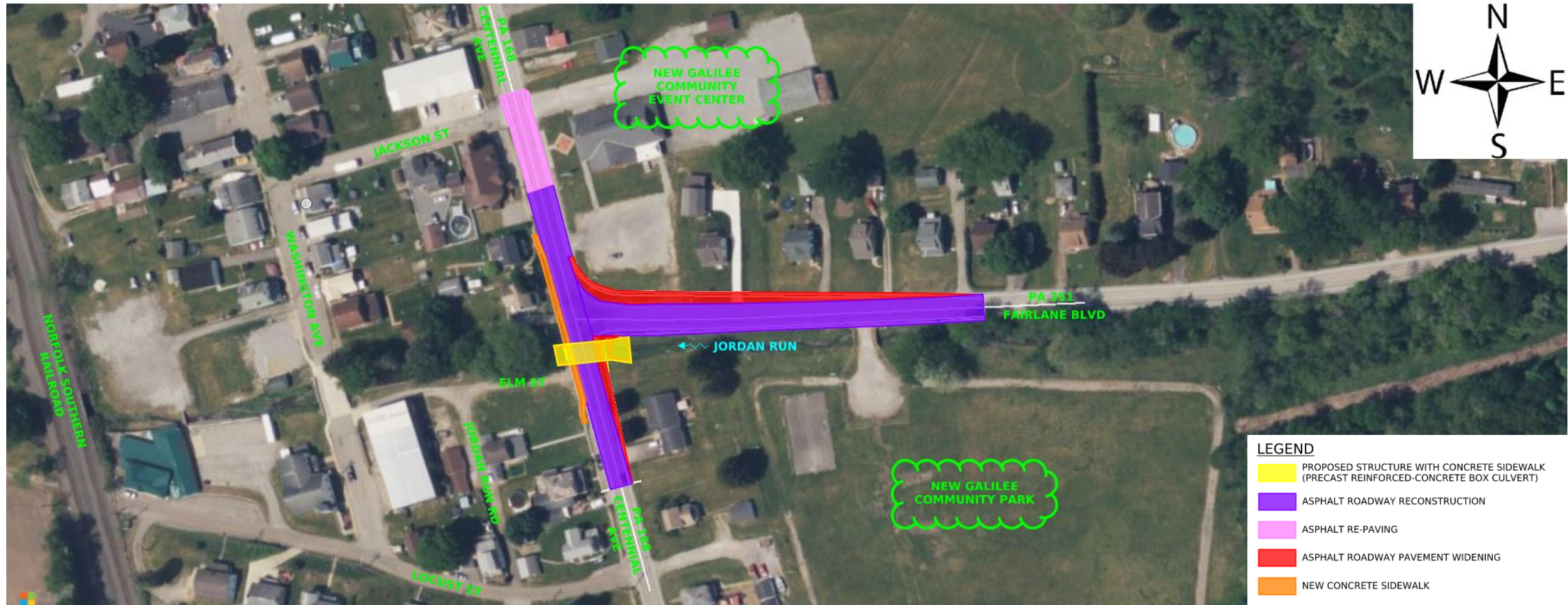


© 2023 PA Department of Transportation

# PROPOSED PROJECT IMPROVEMENTS

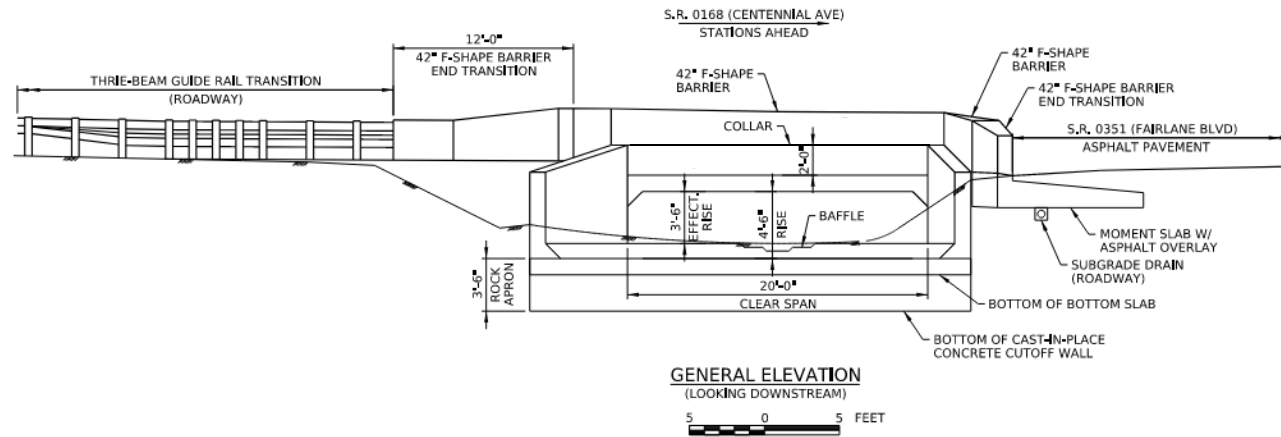
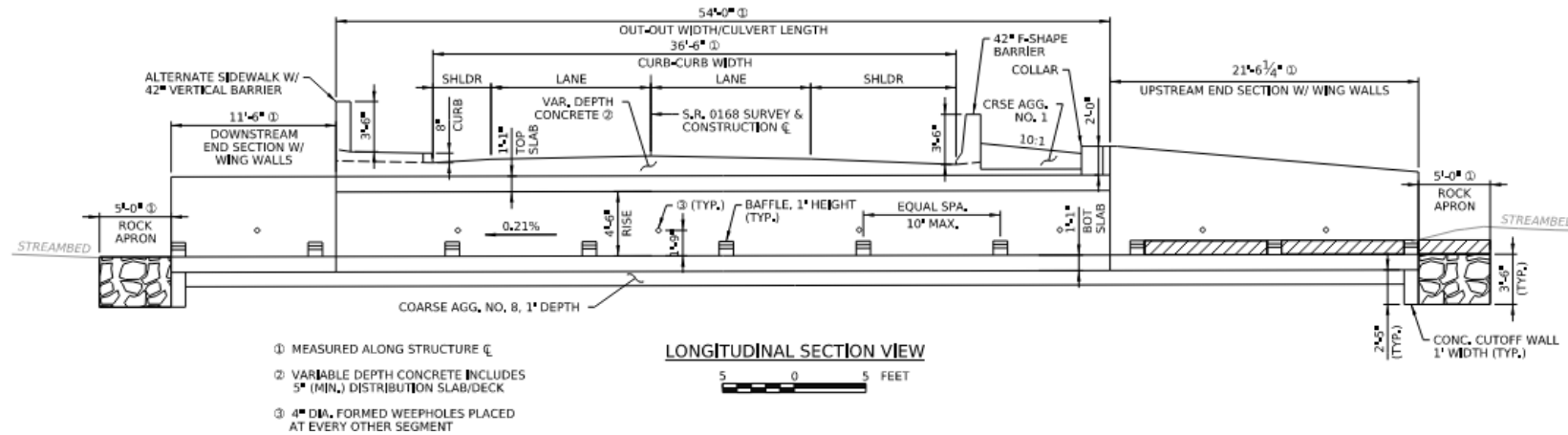
- Full replacement of the existing P/S concrete adjacent box beam bridge carrying PA 168 over Jordan run.
- Removal of existing pedestrian bridge and relocation of pedestrian sidewalk onto new structure.
- Asphalt roadway reconstruction to include:
  - Widening the right side (eastern side) of PA 168 approaching the intersection with PA 351 from the south.
  - Widening the left side (northern side) of PA 351 approaching the intersection with PA 168 from the east.
- Upgrade bridge barrier and guide rail.
- Upgrade stormwater system (roadway drainage) at the intersection.

# PROPOSED PROJECT OVERVIEW



PRELIMINARY / UNOFFICIAL

# PROPOSED STRUCTURE



PRELIMINARY / UNOFFICIAL

# PROJECT SCHEDULE

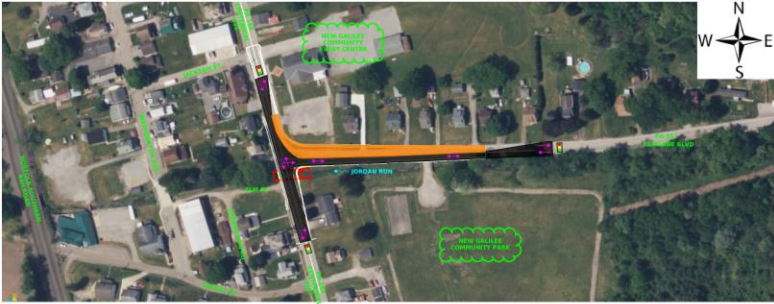
BIDS OPENED	LATE 2026
BOX CULVERT FABRICATION & DELIVERY	WINTER 2027 – EARLY FALL 2027
PHASE 1 - UTILITY RELOCATIONS	WINTER 2027 – SUMMER 2027
PHASE 2 - ROADWAY CONSTRUCTION ON PA 351	LATE SUMMER 2027
PHASE 3A - EXISTING BRIDGE REMOVAL	EARLY FALL 2027
PHASE 3B - CULVERT PLACEMENT (FULL CLOSURE)	EARLY FALL 2027
PHASE 3C - ROADWAY CONSTRUCTION ON PA 168	FALL 2027
INTERSECTION OPENED TO TRAFFIC	MID FALL 2027
PHASE 4 - SITE RESTORATION	LATE FALL 2027
END OF PHYSICAL CONSTRUCTION	SPRING 2028



PRELIMINARY / UNOFFICIAL

# PROJECT PHASES

PHASE 2A



**LEGEND**  
TEMPORARY SIGNAL CONTROLLED ROADWAY (APPROXIMATE)  
WORK ZONE CLOSED TO TRAFFIC  
TRAFFIC DIRECTION  
TEMPORARY TRAFFIC SIGNAL LOCATION (APPROXIMATE)

PHASE 3A



**LEGEND**  
TEMPORARY SIGNAL CONTROLLED ROADWAY (APPROXIMATE)  
WORK ZONE CLOSED TO TRAFFIC  
TRAFFIC DIRECTION  
TEMPORARY TRAFFIC SIGNAL LOCATION (APPROXIMATE)

PHASE 3C



**LEGEND**  
TEMPORARY SIGNAL CONTROLLED ROADWAY (APPROXIMATE)  
WORK ZONE CLOSED TO TRAFFIC  
TRAFFIC DIRECTION  
TEMPORARY TRAFFIC SIGNAL LOCATION (APPROXIMATE)

PHASE 2B



**LEGEND**  
TEMPORARY SIGNAL CONTROLLED ROADWAY (APPROXIMATE)  
WORK ZONE CLOSED TO TRAFFIC  
TRAFFIC DIRECTION  
TEMPORARY TRAFFIC SIGNAL LOCATION (APPROXIMATE)

PHASE 3B



**LEGEND**  
WORK ZONE CLOSED TO TRAFFIC  
PROPOSED CULVERT

PHASE 4



**LEGEND**  
NEW ASPHALT PAVEMENT LIMITS  
PROPOSED CULVERT  
SIDEWALK RECONSTRUCTION

PRELIMINARY / UNOFFICIAL

# PROPOSED DETOUR FOR CARS



PRELIMINARY / UNOFFICIAL

# PROPOSED DETOUR FOR TRUCKS



PRELIMINARY / UNOFFICIAL

# NEW GALILEE COMMUNITY PARK

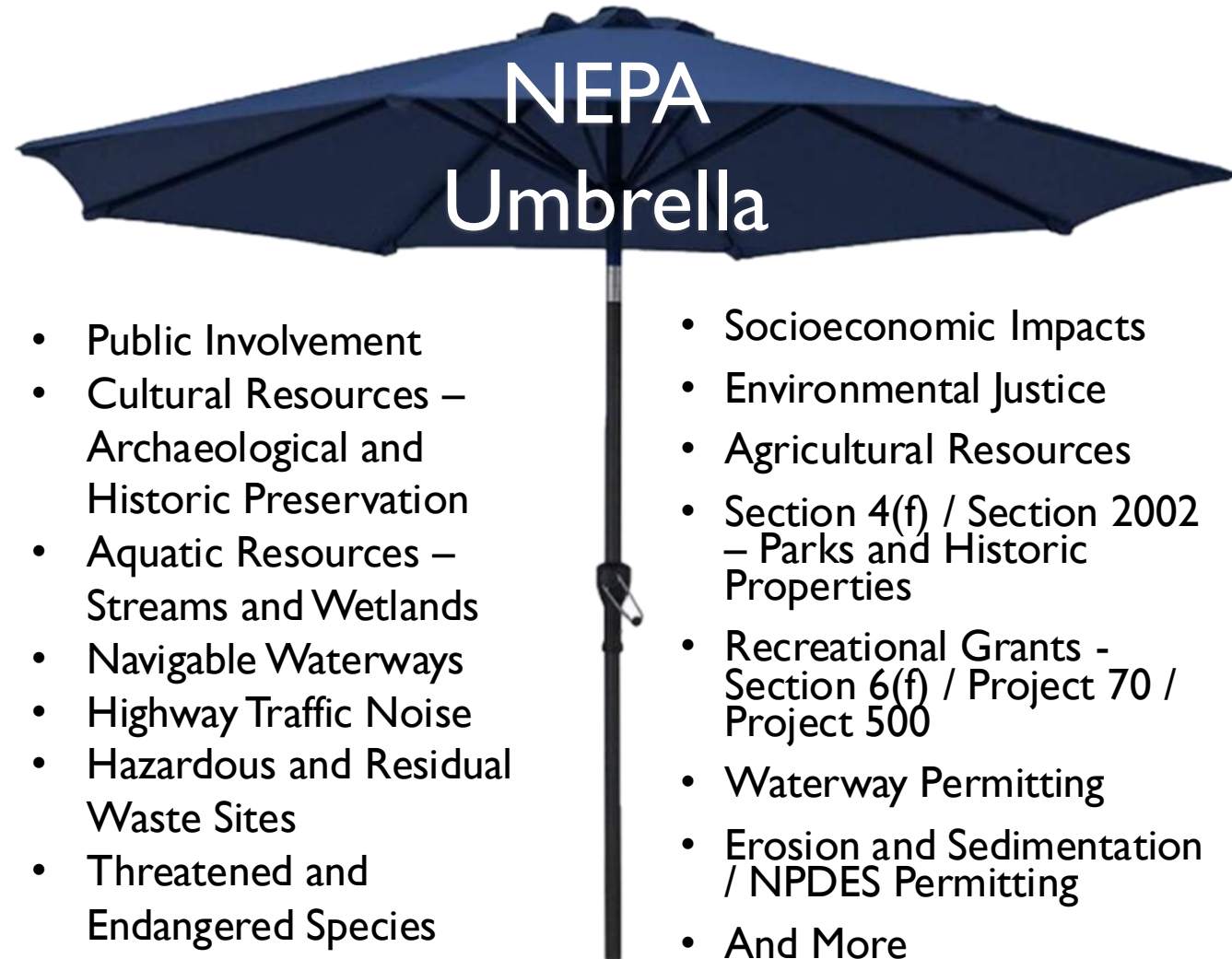
- New Galilee Community Park is a protected/publicly-owned environmental resource (Section 4(f) property) owned by New Galilee Borough.
- Based on the project design there will be a “use” of the Section 4(f) property through the permanent slope easement needed to construct the project (2,501 square feet of property acquisition).
- This “use” of New Galilee Community Park is being considered *de minimis* as it does not appear to adversely affect the features, attributes, or qualities that qualify New Galilee Community Park for protection under Section 4(f).
- Under Section 4(f), the public must be afforded an opportunity to review and comment on the effect of the project on the protected activities, features, and attributes of the property.
- If you have any comments or concerns related to project impacts to New Galilee Community Park, contact:
  - Mark Young, District Environmental Planning Manager – (412) 429-4858
  - Bob Billick, Assistant Environmental Manager (NEPA) – (412) 429-5045



# NATIONAL ENVIRONMENTAL POLICY ACT (NEPA)

Public outreach begins with PennDOT Connects and extends into the **NEPA** (National Environmental Policy Act) process:

- PennDOT Connects is a project planning and development approach that engages local and planning partners by collaborating with stakeholders before project scopes are developed.
- NEPA requires agencies to integrate environmental values into their decision-making processes by considering the environmental impacts of their proposed actions and reasonable alternatives to those actions
- NEPA also includes public involvement activities and gathering feedback from the public
- This PowerPoint presentation is part of District I-0's coordination with the public to obtain feedback on the project and to meet NEPA requirements.



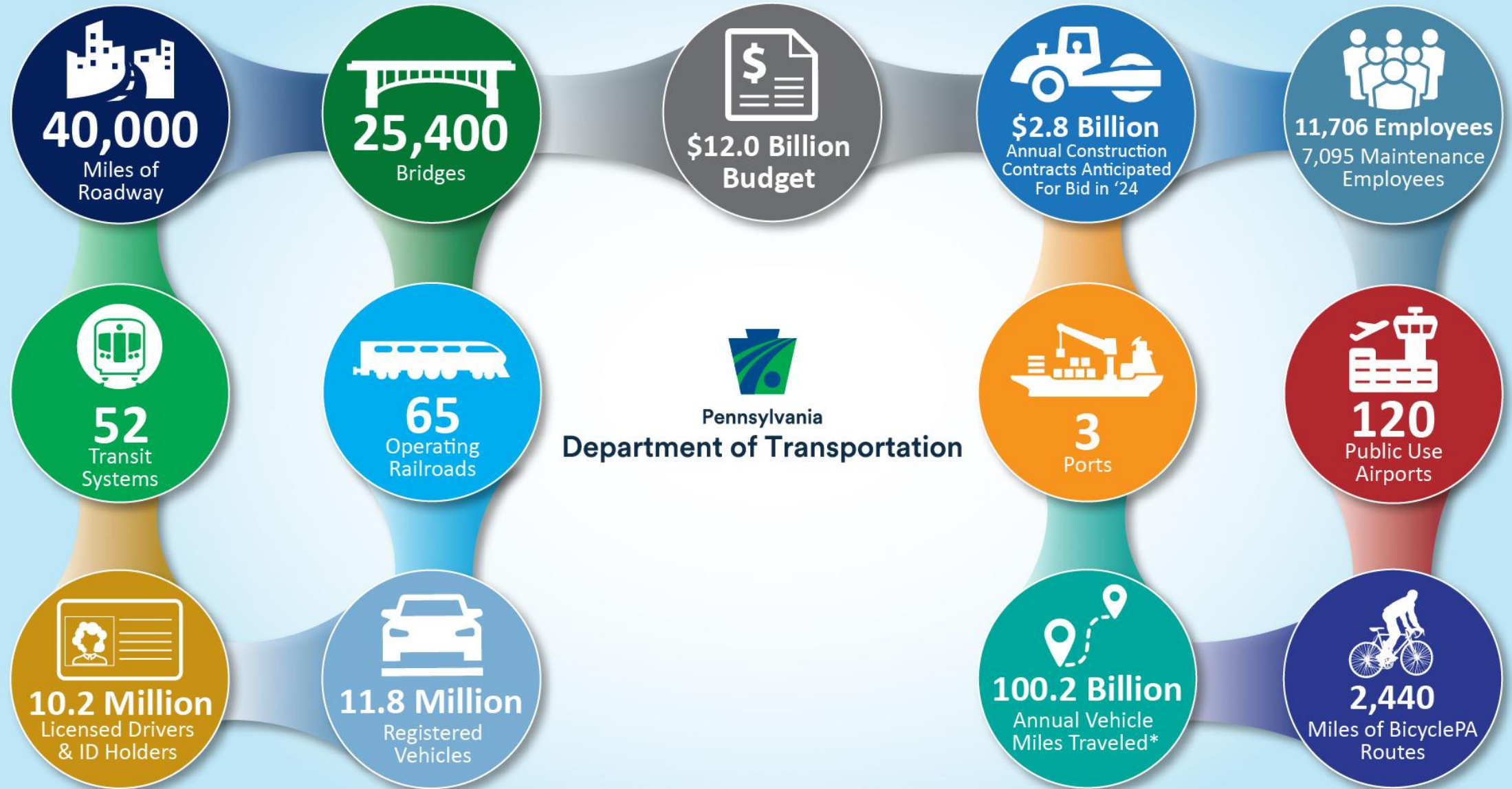
# PROJECT SURVEY

- To provide feedback on the project, please complete the project survey available on the project website
- On the right side of the screen, under Resources, click the “Submit a Comment” button.

## Resources

Submit a Comment →

# PENNDOT BY THE NUMBERS



# FOLLOW PENNDOT



[www.PennDOT.pa.gov](http://www.PennDOT.pa.gov)



[www.DMV.pa.gov](http://www.DMV.pa.gov)



[PennsylvaniaDepartmentofTransportation](#)



[PennDOTNews](#)



[PennsylvaniaDOT](#)



[PennDOTSec](#)



[/company/PennDOT](#)



[PennDOTSec](#)



[PennsylvaniaDOT](#)



Pennsylvania  
Department of Transportation