

# BIGELOW BOULEVARD

**PRELIMINARY ENGINEERING**

SR 400, SECTION A49

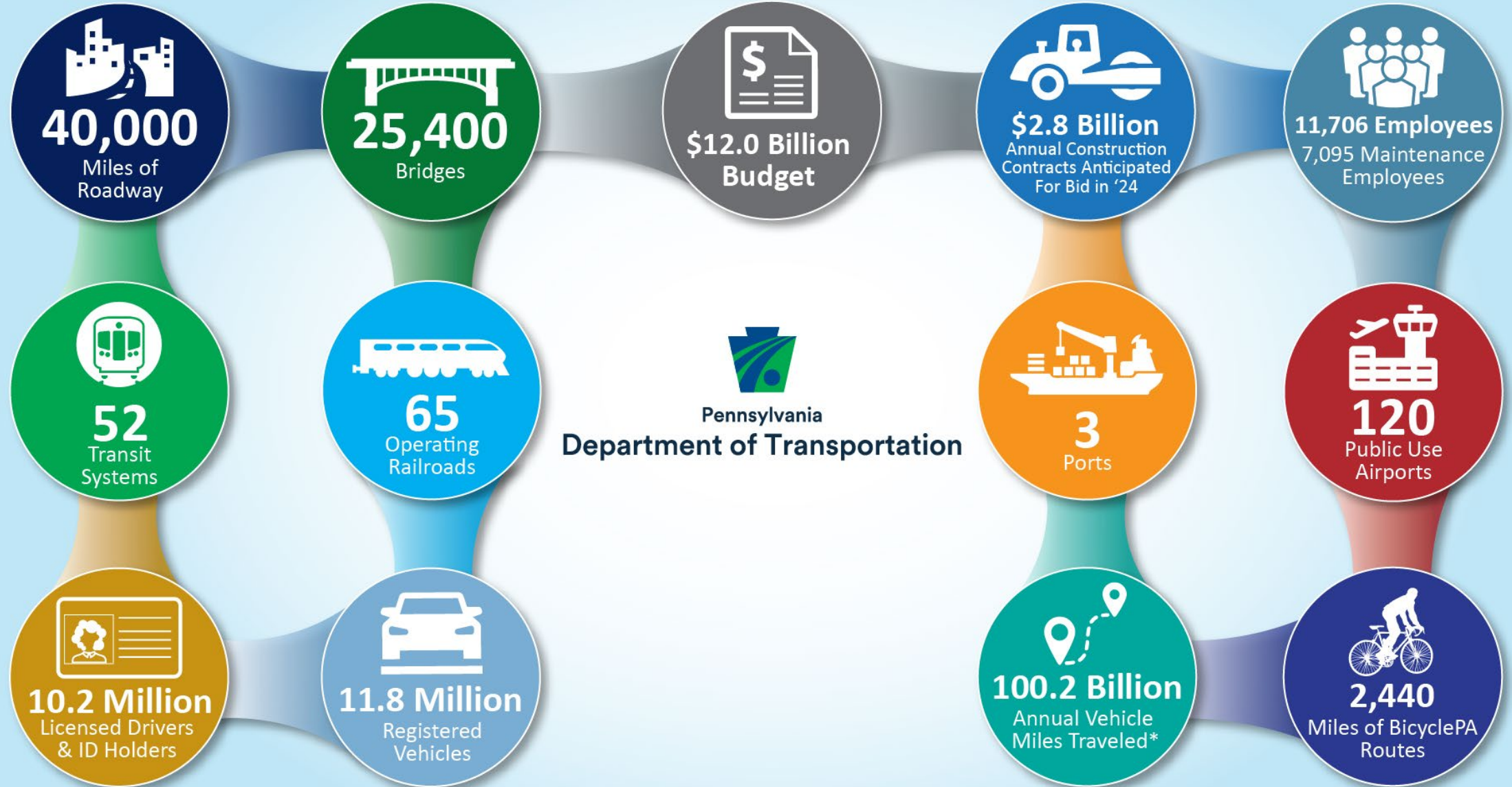
PITTSBURGH, ALLEGHENY COUNTY

PUBLIC INVOLVEMENT PRESENTATION – JANUARY 2025



Pennsylvania  
Department of Transportation

# PENNDOT BY THE NUMBERS



# PROJECT TEAM

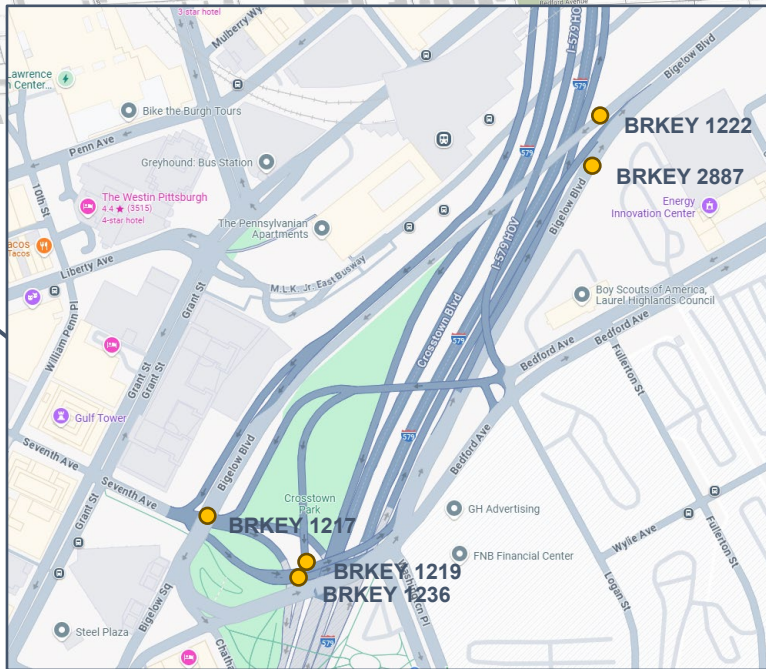
- Design Division
  - Direct questions to:  
Justin McCollum, Project Manager  
Phone: 412-429-4895  
Email: [jumccollum@pa.gov](mailto:jumccollum@pa.gov)  
Engineering District 11-0  
45 Thoms Run Road  
Bridgeville, PA 15017
- Environmental Division
  - Mark Young – District Environmental Planning Manager
  - Bob Billick – Assistant Environmental Manager (NEPA)
- Press Office
  - Steve Cowan – District Press Officer

# PRESENTATION & PROJECT INFORMATION

- SR 400 Section A49 (Bigelow Boulevard) Project
  - The purpose of this presentation is to introduce the project to the public, gather feedback, and present the proposed design.
  - The purpose of this project is to extend the useful life of the existing asphalt paving, maintain sustainable crossings on SR 400 over SR 579 and its ramps along with Seventh Avenue and its ramps, and update inadequate ADA facilities.
  - The project will include pavement resurfacing, drainage upgrades, traffic signal upgrades, and bridge, retaining wall and sign structure preservation work. The existing guiderail median barrier will be replaced with concrete median barrier and the roadway lighting will be upgraded. Pedestrian accommodations at the Herron Avenue intersection and the Bloomfield Bridge intersection will be improved.
  - Construction is anticipated to begin Spring 2027.



# PROPOSED WORK AREA



Downtown Bridge Inset

# BARRIER REPLACEMENT

- Existing metal median and curb guardrails will be replaced with concrete barriers throughout the corridor



Existing Barrier (Typical)



Proposed Barrier  
(Typical, Existing in some  
sections)



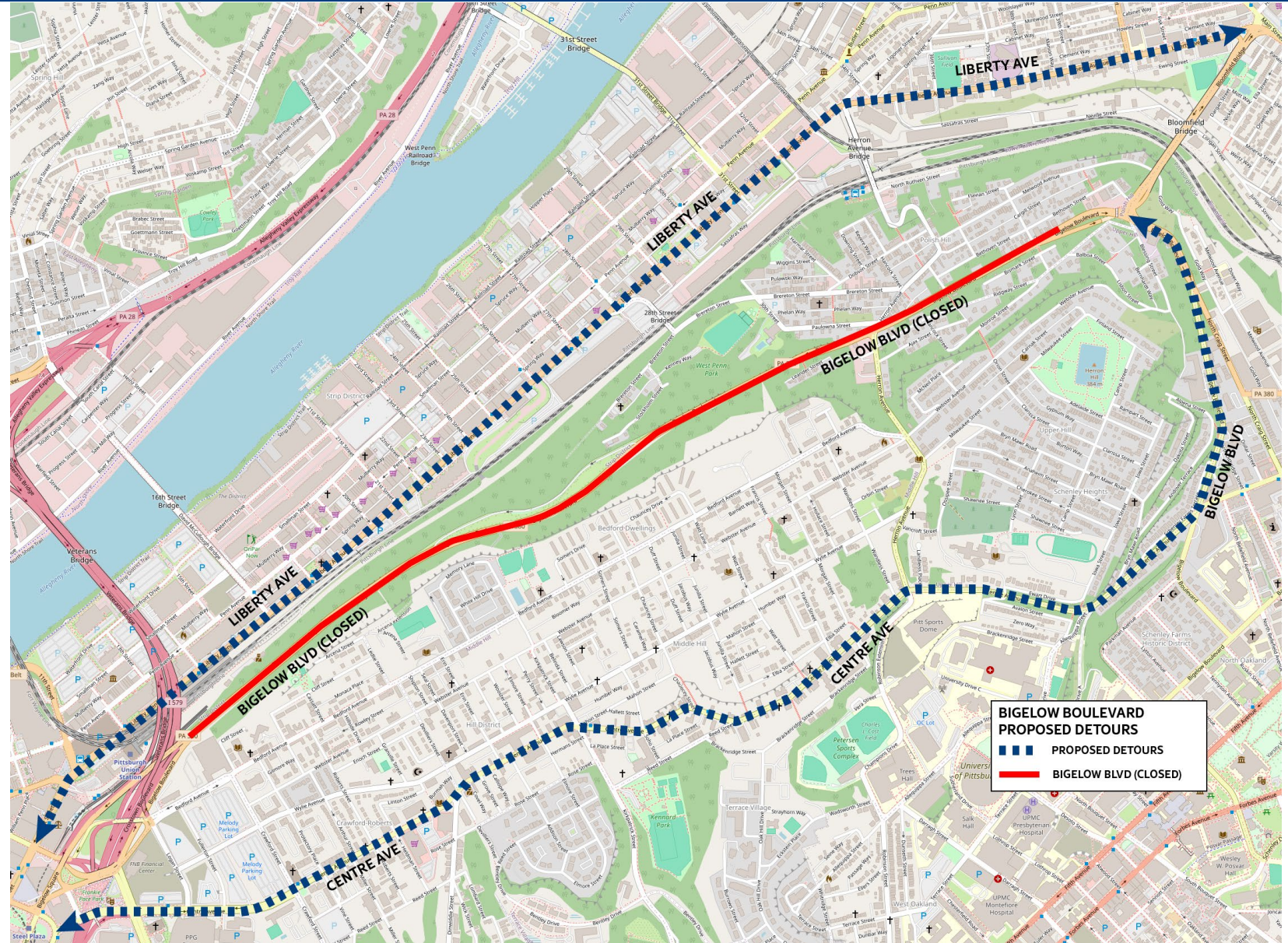
# PROPOSED DETOURS

Detours:

Centre Ave – 2.25 miles

Liberty Ave – 3.15 miles

Detours will be short term duration for structure repairs.

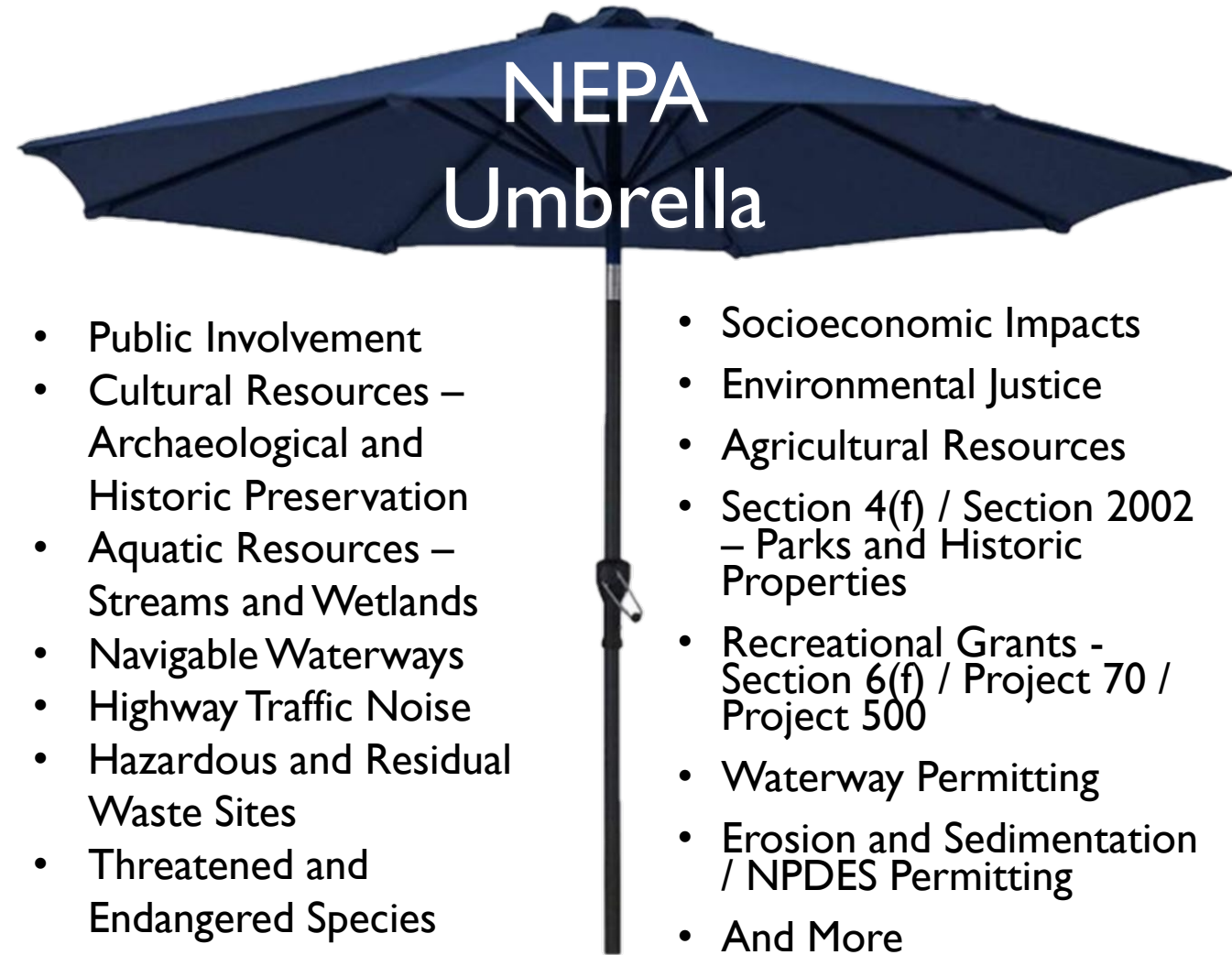




# NATIONAL ENVIRONMENTAL POLICY ACT (NEPA)

Public outreach begins with PennDOT Connects and extends into the **NEPA** (National Environmental Policy Act) process:

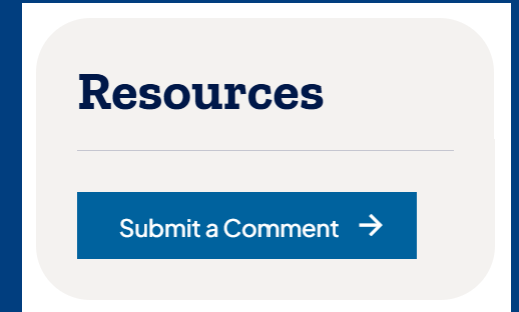
- PennDOT Connects is a project planning and development approach that engages local and planning partners by collaborating with stakeholders before project scopes are developed.
- NEPA requires agencies to integrate environmental values into their decision-making processes by considering the environmental impacts of their proposed actions and reasonable alternatives to those actions
- NEPA also includes public involvement activities and gathering feedback from the public
- This PowerPoint presentation is part of District I I-0's coordination with the public to obtain feedback on the project and to meet NEPA requirements.





# PROJECT SURVEY

- To provide feedback on the project, please complete the project survey available on the project website
- On the right side of the screen, under Resources, click the “Submit a Comment” button.



# FOLLOW PENNDOT



[www.PennDOT.pa.gov](http://www.PennDOT.pa.gov)



[www.DMV.pa.gov](http://www.DMV.pa.gov)



[PennsylvaniaDepartmentofTransportation](#)



[PennDOTNews](#)



[PennsylvaniaDOT](#)



[PennDOTSec](#)



[/company/PennDOT](#)



[PennDOTSec](#)



[PennsylvaniaDOT](#)



Pennsylvania  
Department of Transportation