



PROJECT SCHEDULE




PHASE 1: ENVIRONMENTAL CLEARANCE

Public Meeting No. 1 to Present Detailed Alternatives - **JUNE 23, 2022**
Public Meeting No. 2 to Present Detailed Alternatives - **NOVEMBER 16, 2023**
Newsletter No. 1 to Present Recommended Preferred Alternative - **SPRING 2024**
Circulate Draft Environmental Impact Statement (DEIS) - **FALL 2024**
Conduct Public Hearings - DECEMBER 11 AND 12, 2024
Public Meeting No. 3 to Present Selected Alternative & Mitigation - **SPRING 2025**
Complete Final Environmental Impact Statement (FEIS) and issue Record of Decision (ROD) - **SUMMER 2025**




PHASE 2: PRELIMINARY ENGINEERING (FULLY FUNDED)

Complete Preliminary Engineering Design - **2023 to 2025**



PHASE 3: FINAL DESIGN (FULLY FUNDED)

Complete Final Design & Right-of-way Acquisition - **2025 to 2028**



PHASE 4: CONSTRUCTION (CONTINGENT UPON FUNDING)

Complete Construction - **2029 to 2031**

WE ARE HERE

ALTERNATIVE IMPACTS COMPARISON

Resource	Project Build Alternatives			
	DU Modified	DU-Shift Modified	E Modified	E-Shift Modified
🏠 SOCIOECONOMIC RESOURCE IMPACTS				
Parcels intersected by the Limit of Disturbance (#)	117	114	106	103
Residential Displacements (#)	9	9	8	8
Commercial Displacements (#)	2	2	2	2
Impacted Noise Receptors (#)	13	9	13	9
🏛️ CULTURAL RESOURCE IMPACTS				
Above Ground Historic Resources (# / acres)	3 / 40.2	3 / 40.2	1 / 0.78	1 / 0.78
Areas of High Probability for Prehistoric Archaeology / Historic Archaeology (acres)	50.0 / 16.6	50.0 / 16.6	48.6 / 13.9	48.6 / 13.9
Section 4(f) Resources (Impacted (#) / Type of Use)	3 / > De Minimis	3 / > De Minimis	1 / De Minimis	1 / De Minimis
🌲 NATURAL RESOURCE IMPACTS				
Forestland (acres)	431.4	430.0	389.8	388.8
Active Farmland (acres)	76.6	76.8	37.9	38.1
Productive Farms (#)	9	9	6	6
Prime Farmland Soils (acres)	32.9	32.9	19.9	19.9
Soils of Statewide Importance (acres)	102.9	102.9	82.0	81.9
Preferential Tax Assessment (acres)	74.9	75.2	36.1	36.4
FEMA 1% Annual Chance Floodplains (acres)	12.3	12.3	4.7	4.7
Potential Bat Hibernacula (#)	3	3	0	0
Wetland (acres)	11.30	11.17	10.07	9.94
Streams (linear feet)	24,796	24,811	23,192	23,192
⚠️ MINING AND POTENTIAL HAZARDOUS WASTE				
Surface Mining Boundaries (acres)	319.7	319.6	212.7	212.7
Deep Mine Boundaries (acres)	22.9	22.9	23.0	23.0
Area of Concern Sites (#)	3	3	3	3
⚙️ ENGINEERING				
Length of Alternative (miles)	8.3	8.3	7.9	7.9
Limit of Disturbance (acres)	628.7	626.2	560.9	558.7
Preliminary Construction Cost Estimate (Year 2030 Dollars)	\$525.5 M	\$528.8 M	\$349.6M	\$352.9 M

Notes: 1) Green shading represents the lowest impact per category by alternative (excluding the No Build, which does not carry any direct impacts other than noise receptors).
2) Preliminary construction cost estimates do not include, Design, Right-of-Way Acquisition, Utility Relocation, Mineral Rights, Wildlife Crossings, Intelligent Transportation Systems and Maintenance Facility Final Amenities.



PUBLIC HEARINGS
December 11 and 12, 2024

The Pennsylvania Department of Transportation (PennDOT) in partnership with the Maryland State Highway Administration (SHA), and in coordination with the Federal Highway Administration (FHWA), the United States Army Corps of Engineers (USACE) and the Maryland Department of the Environment (MDE), welcomes you to the U.S. 219 Meyersdale, PA to Old Salisbury Road, MD Project Public Hearings.

The purpose of the public hearings is to formally present the Draft Environmental Impact Statement (DEIS) (FHWA-PA-EIS-24-01-D / CEQ EIS No. 20240203) detailing the evaluation and comparison of the four Build Alternatives

and the No Build Alternative. A FHWA Preferred Alternative is identified in this DEIS. The public hearings will provide an opportunity for interested individuals, community associations, citizen groups, and government agencies to offer spoken or written comments for the project record on the DEIS. The public hearings also offer the opportunity for the USACE to receive comments on the Department of the Army (DA) Section 404 permit (2014-523) and, for the Maryland public hearing only, the MDE Nontidal Wetlands and Waterways Permit Application (24-NT-3200) and MDE Section 401 Water Quality Certification Request (24-WQC-0043).



Attendees view plans at November 2023 Public Meeting

HOW TO PROVIDE TESTIMONY

There are four options for providing testimony at these public hearings. They include the following:

- 1 Public In-Person Verbal Testimony
- 2 Public Virtual Verbal Testimony (available only for attendees calling into the hearing)
- 3 Private In-Person Verbal Testimony
- 4 Written Testimony

Please note if you wish to provide testimony, it will become part of the public hearing record, and PennDOT, SHA, FHWA, USACE and MDE will review and consider your testimony. You are encouraged to provide comments on the alternative(s) you support or oppose and your reasons. Testimony should be limited to the public

hearing aspects and statements or opinions about the U.S. 219 Project. Team members are available to answer questions related to the project during the plans display portion of the hearing only. These comments will not be recorded by the stenographer or included in the public hearing record. No questions will be answered during the formal testimony portion of the hearing. Please view the testimony option display boards for instructions.

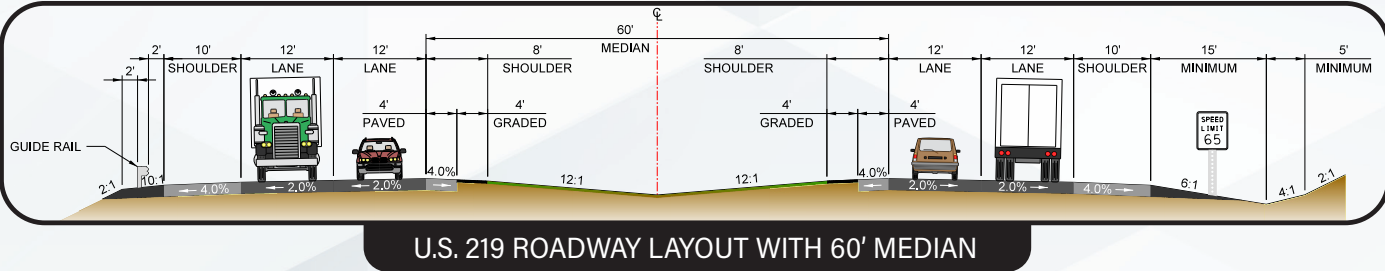
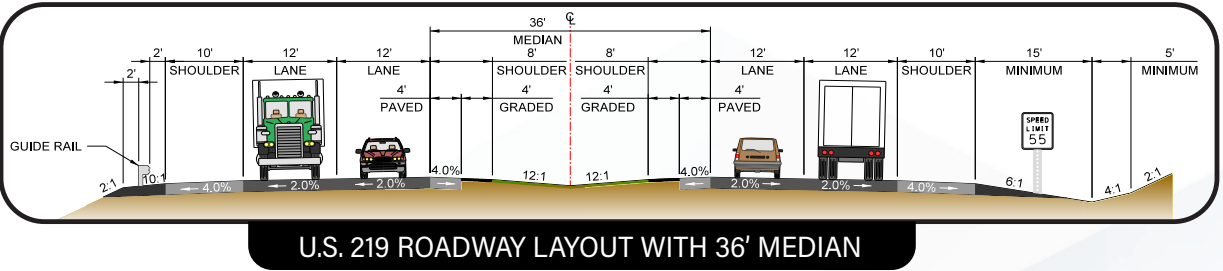
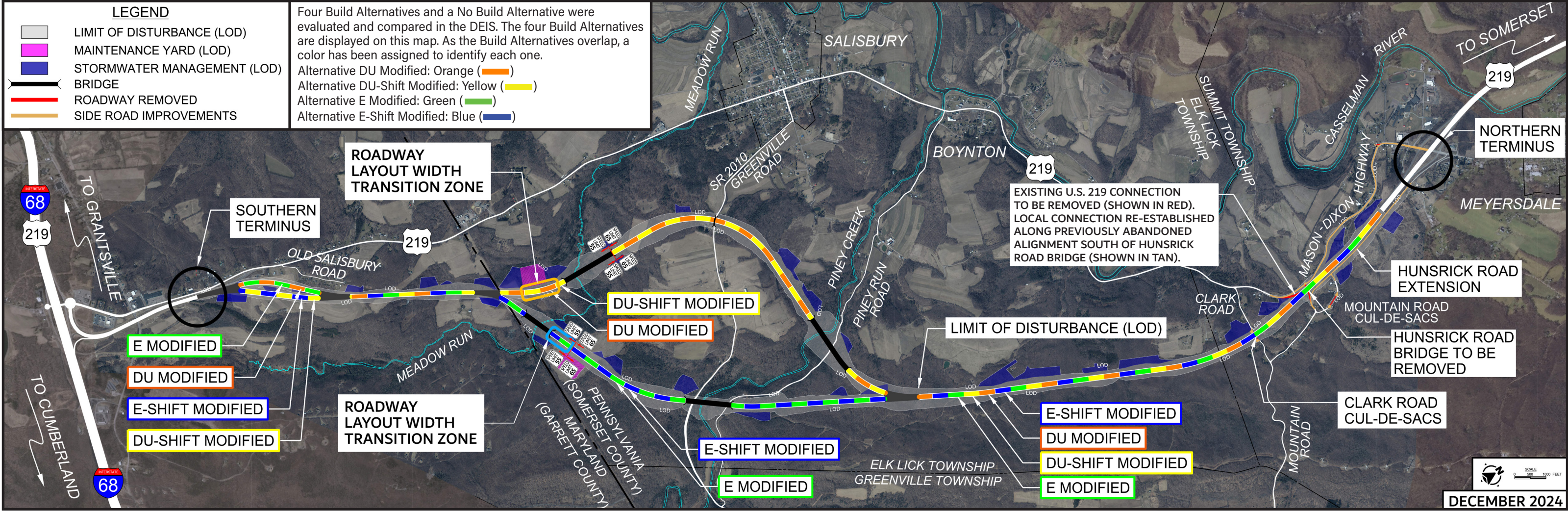
The public hearings will be recorded, and a transcript will be prepared. In addition to the testimony provided, all displays, handouts and presentations will be included in the transcript. Other materials, along with other written testimony received after the public hearings, will be added to the official public hearing transcript if they are postmarked by **January 13, 2025, at 5:00 p.m.**

We will carefully review and consider project concerns and preferences expressed at tonight's public hearing.



WE WANT TO HEAR FROM YOU!

Thank you for attending the public hearings and we look forward to receiving your comments. We request that all questions or comments following the public hearings be sent to [Brionna Marks, KCI Technologies](mailto:Brionna.Marks@kci.com), at 717-668-0413 or Brionna.Marks@kci.com, to ensure they are properly routed to the correct team member and for record keeping.



Note: The roadway layout for each Build Alternative provides a four-lane divided limited access highway with 12-foot wide travel lanes, 8-foot wide inside shoulders and 10-foot wide outside shoulders. The roadway layout will vary between the two illustrations shown above with the main difference being the median width. The majority of the median within Pennsylvania will be 60' and will transition down to 36' in Maryland. The location of the transition is displayed on the map above.

FHWA PREFERRED ALTERNATIVE: E-SHIFT MODIFIED

Based on the evaluation and comparison of the alternatives, potential impacts, and public and agency input, Alternative **E-Shift Modified** has been identified as the **FHWA Preferred Alternative**. Alternative E-Shift Modified is the **environmentally preferable** alternative and the **most publicly desirable alternative based on comments received from previous public meetings**. Alternative E-Shift Modified offers several advantages over the other Build Alternatives that make it the preferred alternative for this project.

Alternative E-Shift Modified **meets the project purpose and need**, by providing a consistent link in the regional transportation system, primarily between I-68 and I-76. This link would complete the development of Corridor N of the Appalachian Development Highway System and support increased economic opportunities in the region.

- Fewest number of property impacts**
- Least wetland impacts**
- Fewest impacted noise receptors**
- Least forestland impacts**

ENVIRONMENTAL DOCUMENTATION PROCESS/NEXT STEPS

The U.S. 219 Project is currently at the DEIS stage of the environmental documentation process. The next step is to prepare a Final EIS (FEIS)/Record of Decision (ROD) which will include any refinements of the data presented in the DEIS. In addition, the FEIS/ROD will provide responses to all substantive comments received during the DEIS public comment period (November 8, 2024 to January 13, 2025).

