



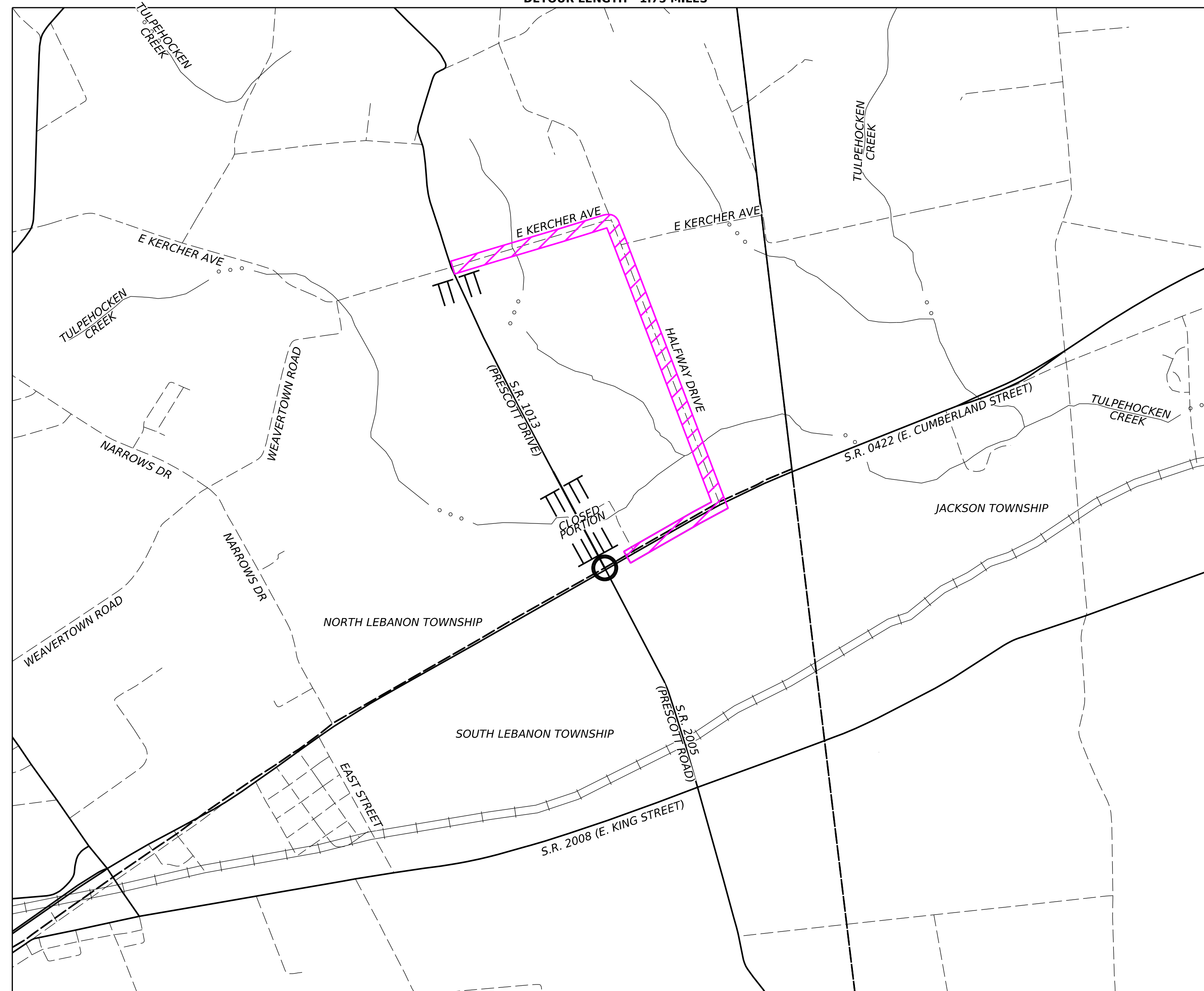
pennsylvania
DEPARTMENT OF TRANSPORTATION

**SR 0422 E. CUMBERLAND STREET RESURFACING
NORTH LEBANON TOWNSHIP, SOUTH LEBANON
TOWNSHIP, JACKSON TOWNSHIP,
AND CITY OF LEBANON
LEBANON COUNTY, PENNSYLVANIA**



PRESCOTT DRIVE DETOUR PLAN

DETOUR LENGTH - 1.75 MILES



LEGEND

STREAM		DETOUR ROUTE	
STATE HIGHWAY		PROJECT LOCATION	
LOCAL ROADS		TEMPORARY SIGN ON TYPE III BARRICADE	
RAILROAD TRACKS			

