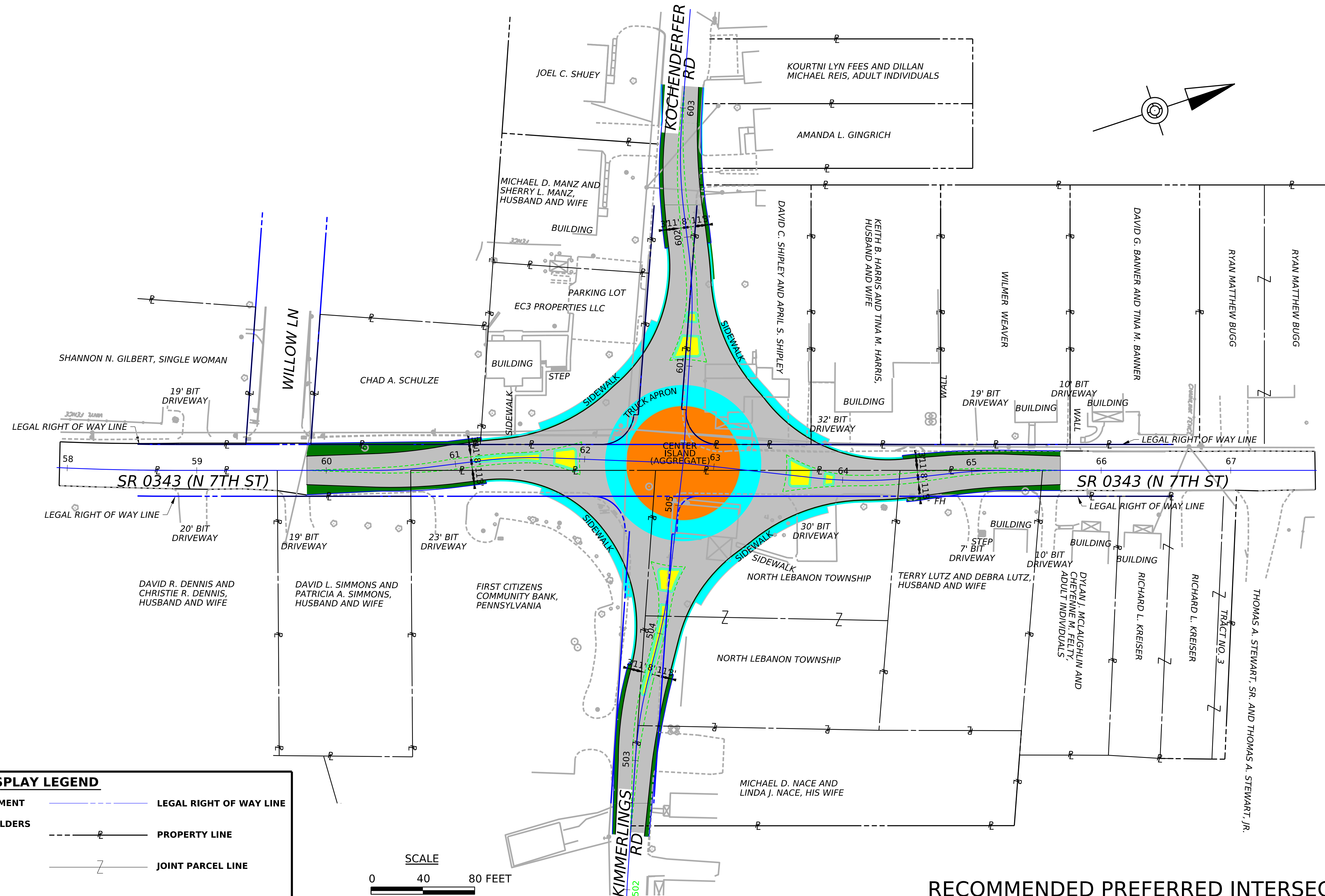





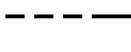




SR 0343 (N 7TH STREET) NORTH LEBANON TOWNSHIP LEBANON COUNTY

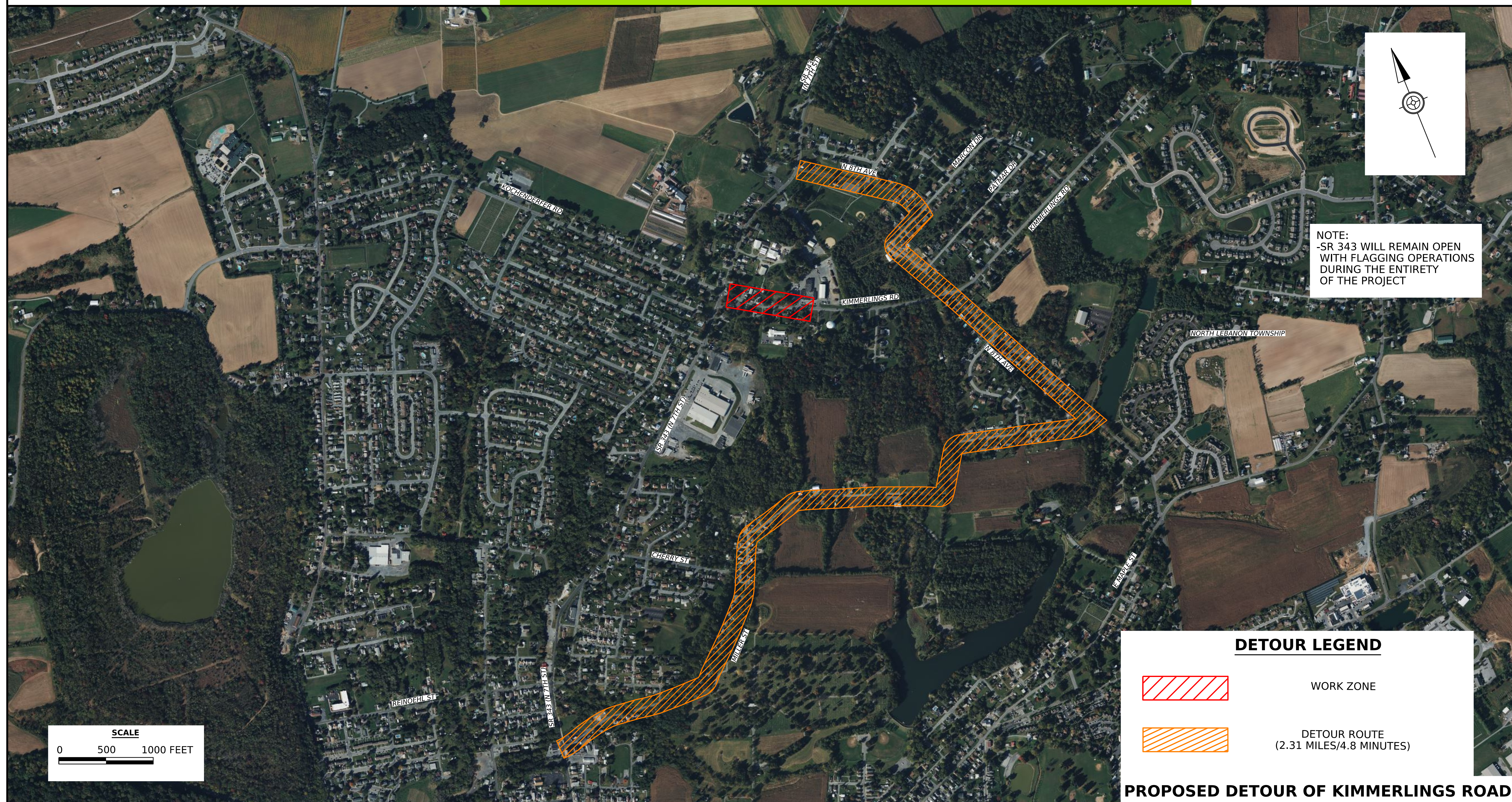


DISPLAY LEGEND

	PROPOSED SUPERPAVE PAVEMENT		LEGAL RIGHT OF WAY LINE
	PROPOSED SUPERPAVE SHOULDERS		PROPERTY LINE
	PROPOSED CONCRETE		JOINT PARCEL LINE
	PROPOSED 2A STONE		
	PROPOSED MEDIAN ISLAND		

RECOMMENDED PREFERRED INTERSECTION ALTERNATIVE

SR 0343 (N 7TH STREET) NORTH LEBANON TOWNSHIP LEBANON COUNTY

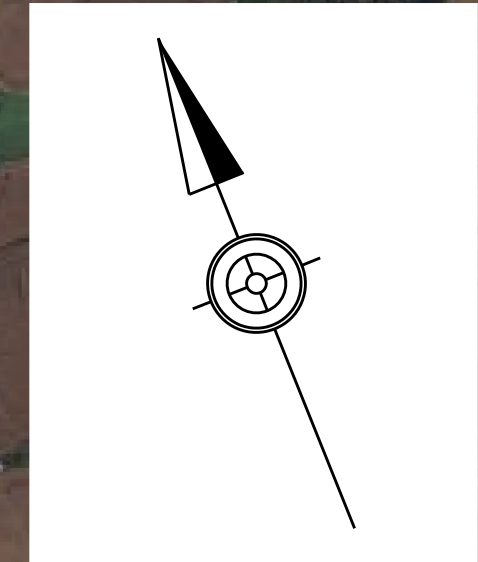




pennsylvania
DEPARTMENT OF TRANSPORTATION

SR 0343 (N 7TH STREET) NORTH LEBANON TOWNSHIP LEBANON COUNTY

verdantas



NOTES:
-SR 343 WILL REMAIN OPEN
WITH FLAGGING OPERATIONS
DURING THE ENTIRETY
OF THE PROJECT

SCALE
0 625 1250 FEET

DETOUR LEGEND



WORK ZONE



DETOUR ROUTE
(2.85 MILES/4.6 MINUTES)

PROPOSED DETOUR OF KOCHENDERFER ROAD