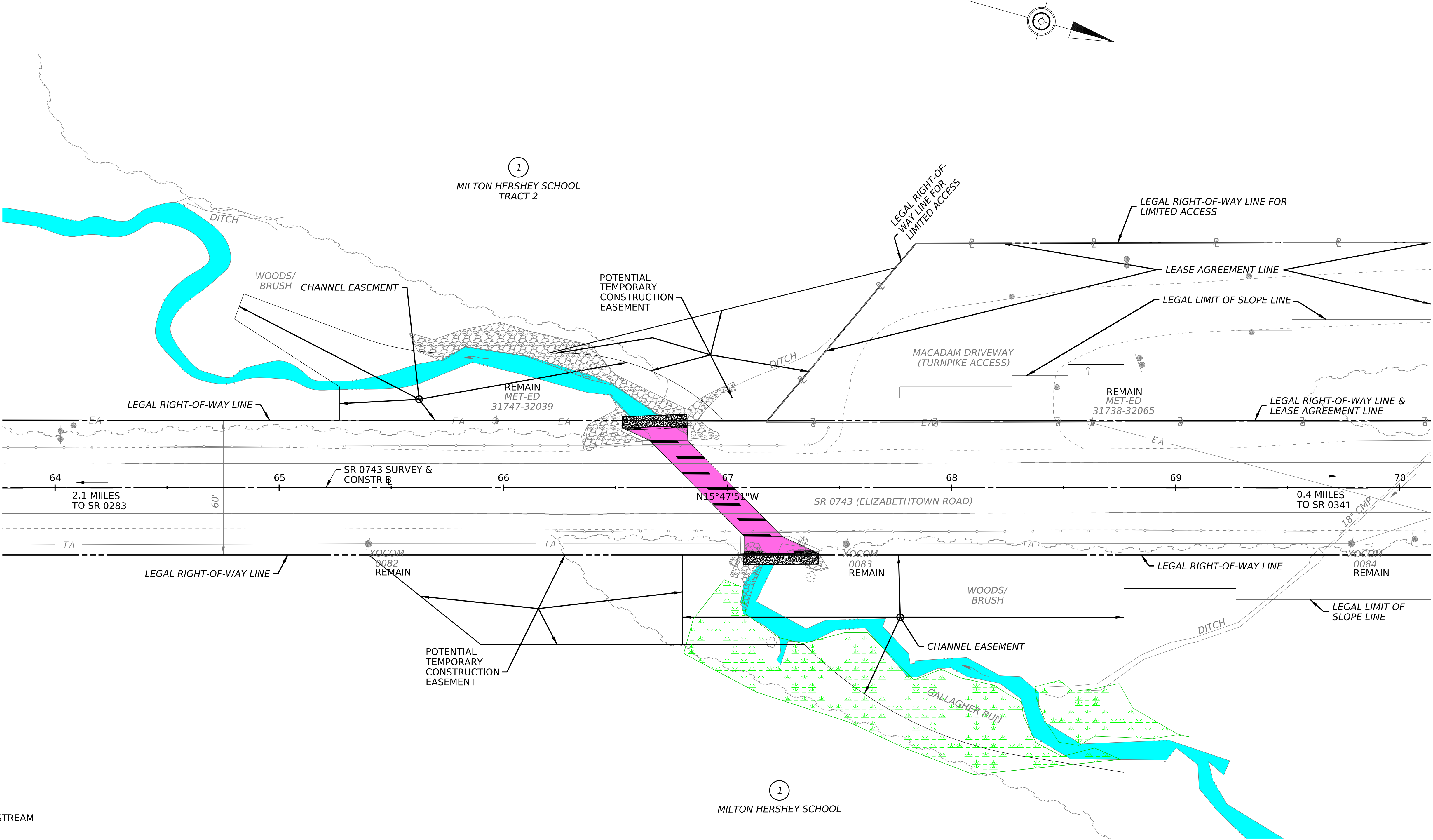




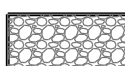


DISTRICT	COUNTY	ROUTE	SECTION	SHEET		
8-0	DAUPHIN	0743	038	1 OF 1		
CONEWAGO TOWNSHIP						
REV NO	REVISIONS			DATE	BY	APPD



LEGEND

-  WATER/STREAM
-  PROPOSED CONCRETE CULVERT BOTTOM WITH BAFFLES
-  SELECTED BORROW EXCAVATION ROCK, CLASS R-7 CHOKED WITH NATURAL STREAM BED MATERIAL, GROUTED 6" BELOW
-  EXISTING WETLAND
-  EXISTING ROCK (TO REMAIN)

ANTICIPATED CONSTRUCTION 2027

PRELIMINARY PLAN
SR 0743 SECTION 038
CONEWAGO TOWNSHIP, DAUPHIN COUNTY

