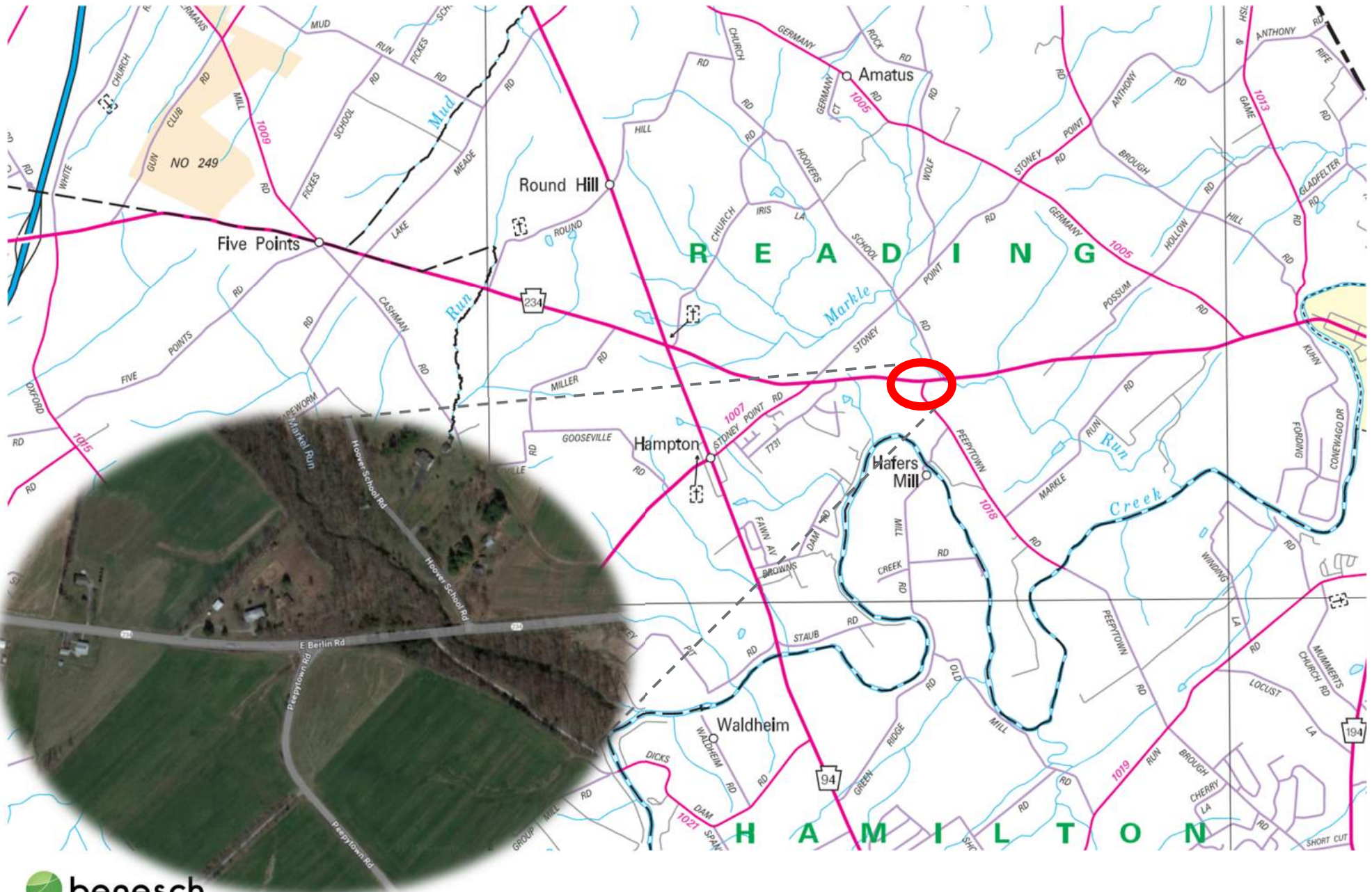


SR 234-029

Reading Township, Adams County

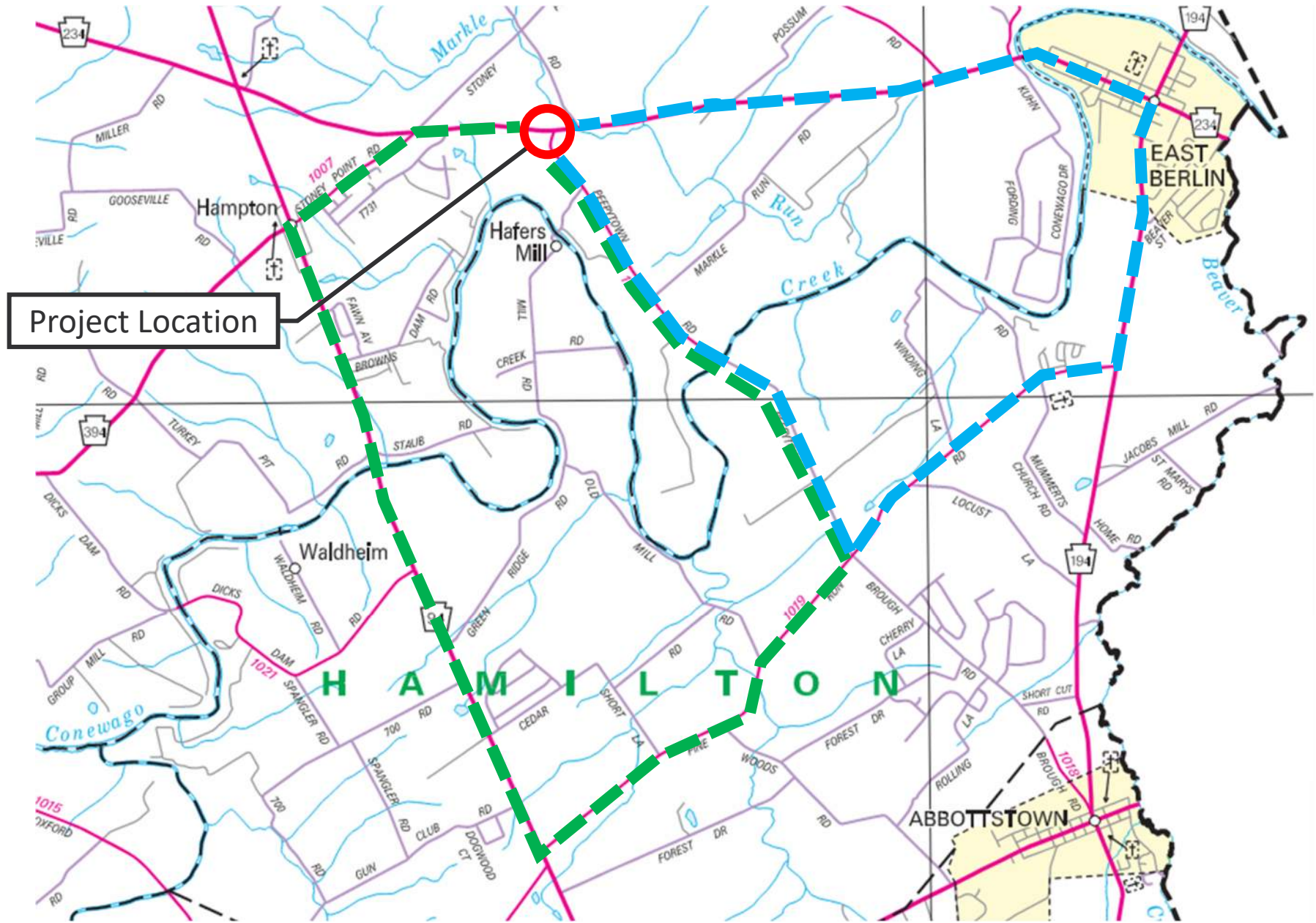
Location Map

 - Project Location



SR 234-029 – Conceptual Detour Routes

Reading Township, Adams County



- Peepytown Road (SR 1018) East Detour Route – Option 1 (6 mi)
- Peepytown Road (SR 1018) West Detour Route – Option 2 (7 mi)

***East Berlin Road (SR 234) and entire traffic control to be determined with alternative selection.**