

CONSTRUCTION STAGES

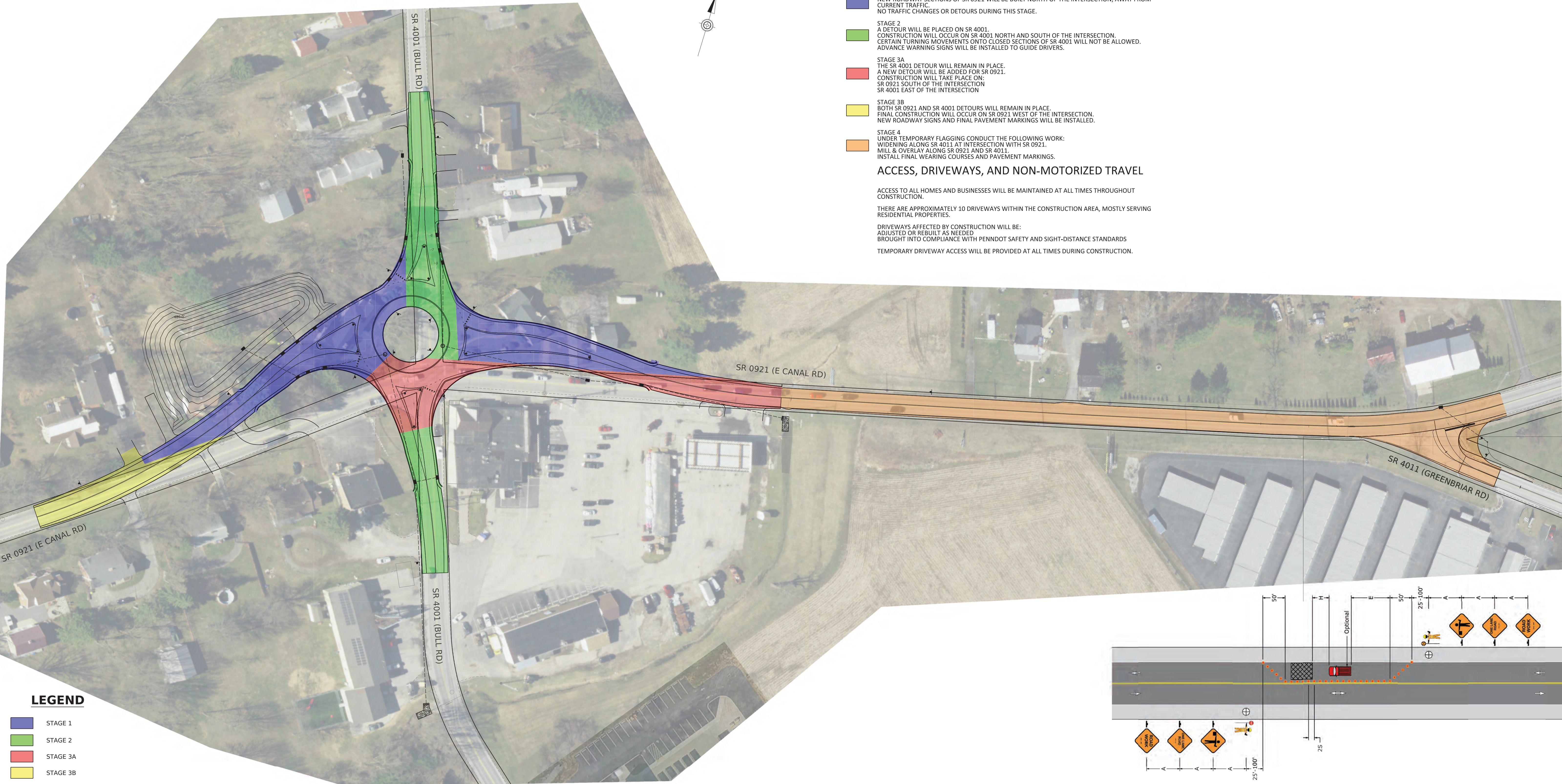
- STAGE 1**
 NEW ROADWAY SECTIONS OF SR 0921 WILL BE BUILT NORTH OF THE INTERSECTION, AWAY FROM CURRENT TRAFFIC.
 NO TRAFFIC CHANGES OR DETOURS DURING THIS STAGE.
- STAGE 2**
 A DETOUR WILL BE PLACED ON SR 4001.
 CONSTRUCTION WILL OCCUR ON SR 4001 NORTH AND SOUTH OF THE INTERSECTION.
 CERTAIN TURNING MOVEMENTS ONTO CLOSED SECTIONS OF SR 4001 WILL NOT BE ALLOWED.
 ADVANCE WARNING SIGNS WILL BE INSTALLED TO GUIDE DRIVERS.
- STAGE 3A**
 THE SR 4001 DETOUR WILL REMAIN IN PLACE.
 A NEW DETOUR WILL BE ADDED FOR SR 0921.
 CONSTRUCTION WILL TAKE PLACE ON:
 SR 0921 SOUTH OF THE INTERSECTION
 SR 4001 EAST OF THE INTERSECTION
- STAGE 3B**
 BOTH SR 0921 AND SR 4001 DETOURS WILL REMAIN IN PLACE.
 FINAL CONSTRUCTION WILL OCCUR ON SR 0921 WEST OF THE INTERSECTION.
 NEW ROADWAY SIGNS AND FINAL PAVEMENT MARKINGS WILL BE INSTALLED.
- STAGE 4**
 UNDER TEMPORARY FLAGGING CONDUCT THE FOLLOWING WORK:
 WIDENING ALONG SR 4011 AT INTERSECTION WITH SR 0921.
 MILL & OVERLAY ALONG SR 0921 AND SR 4011.
 INSTALL FINAL WEARING COURSES AND PAVEMENT MARKINGS.

ACCESS, DRIVEWAYS, AND NON-MOTORIZED TRAVEL

ACCESS TO ALL HOMES AND BUSINESSES WILL BE MAINTAINED AT ALL TIMES THROUGHOUT CONSTRUCTION.

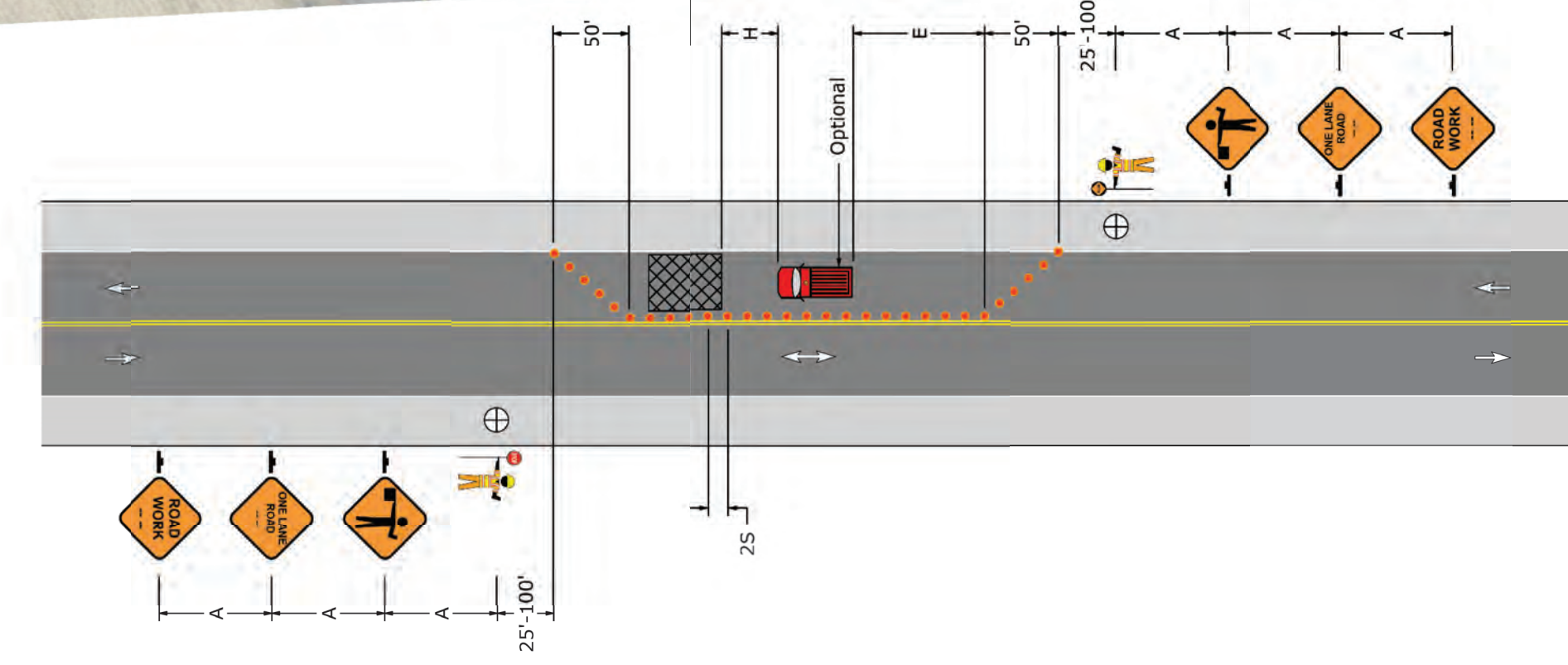
THERE ARE APPROXIMATELY 10 DRIVEWAYS WITHIN THE CONSTRUCTION AREA, MOSTLY SERVING RESIDENTIAL PROPERTIES.

DRIVEWAYS AFFECTED BY CONSTRUCTION WILL BE:
 ADJUSTED OR REBUILT AS NEEDED
 BROUGHT INTO COMPLIANCE WITH PENNDOT SAFETY AND SIGHT-DISTANCE STANDARDS
 TEMPORARY DRIVEWAY ACCESS WILL BE PROVIDED AT ALL TIMES DURING CONSTRUCTION.

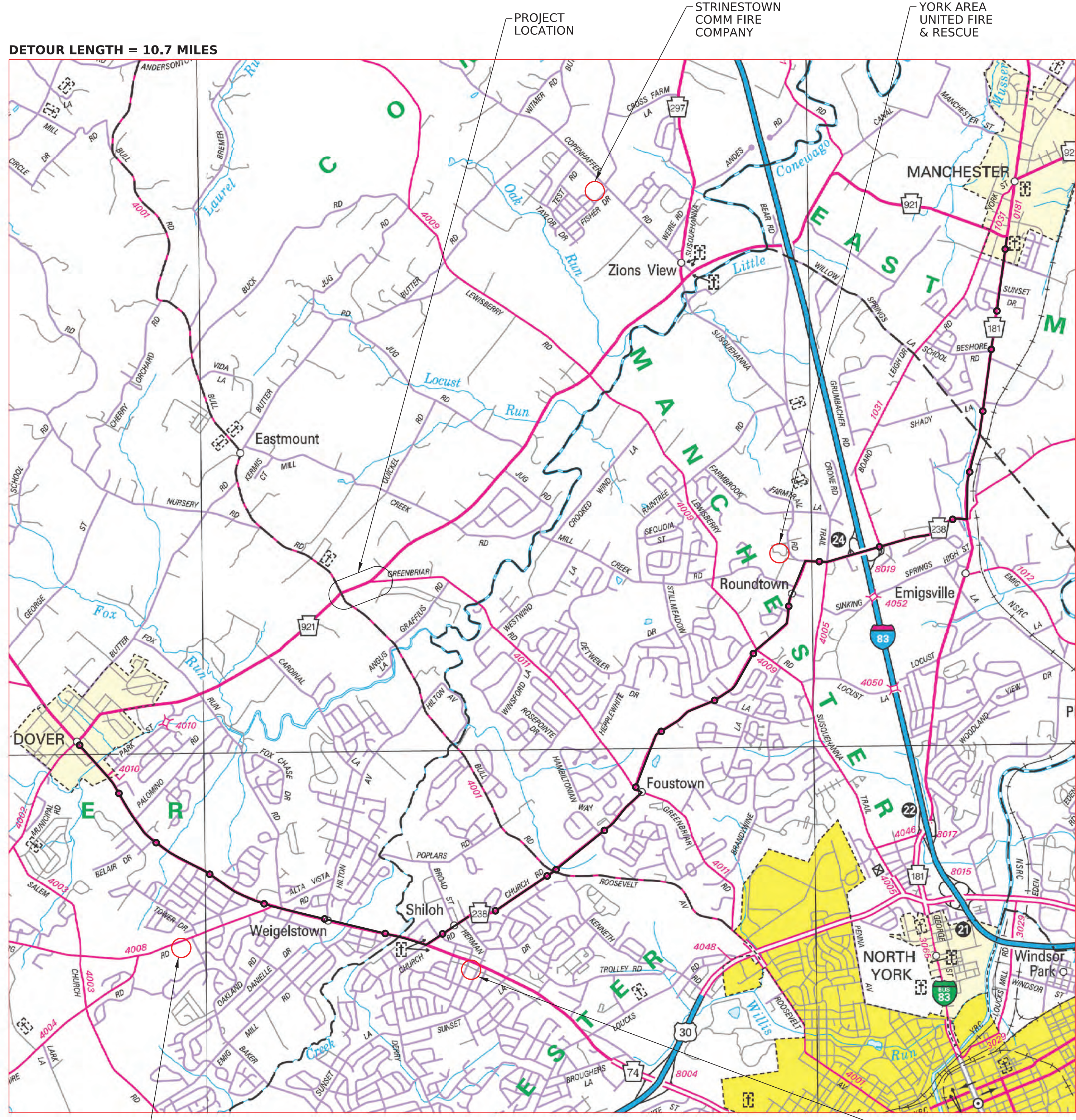


STAGE 1-4

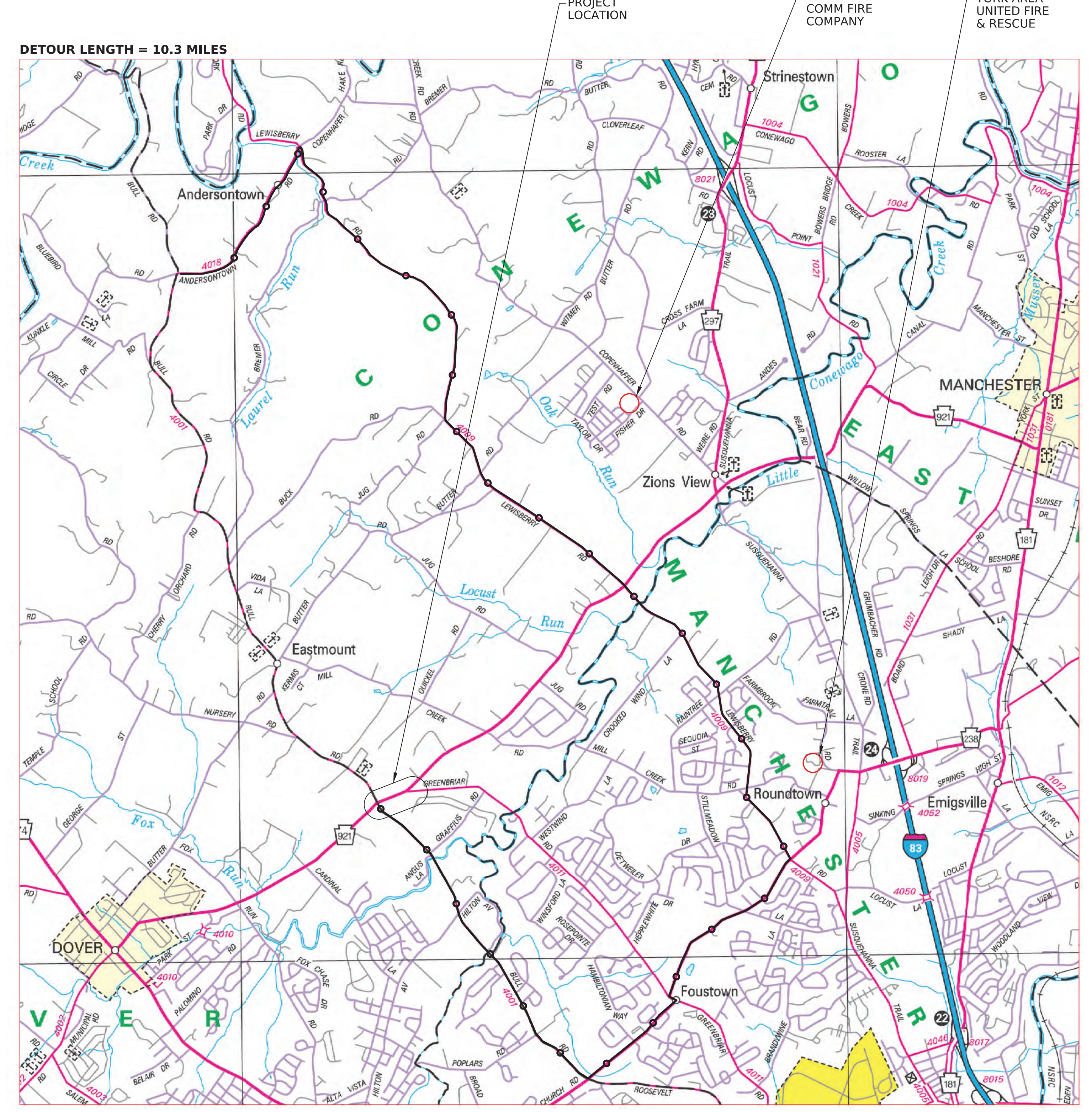
- LEGEND**
- STAGE 1
 - STAGE 2
 - STAGE 3A
 - STAGE 3B
 - STAGE 4



STAGE 4 TEMPORARY FLAGGING



SR 0921 DETOUR MAP (STAGES 3A AND 3B)



SR 4001 DETOUR MAP (STAGES 2, 3A AND 3B)

DOVER TWP FIRE DEPARTMENT