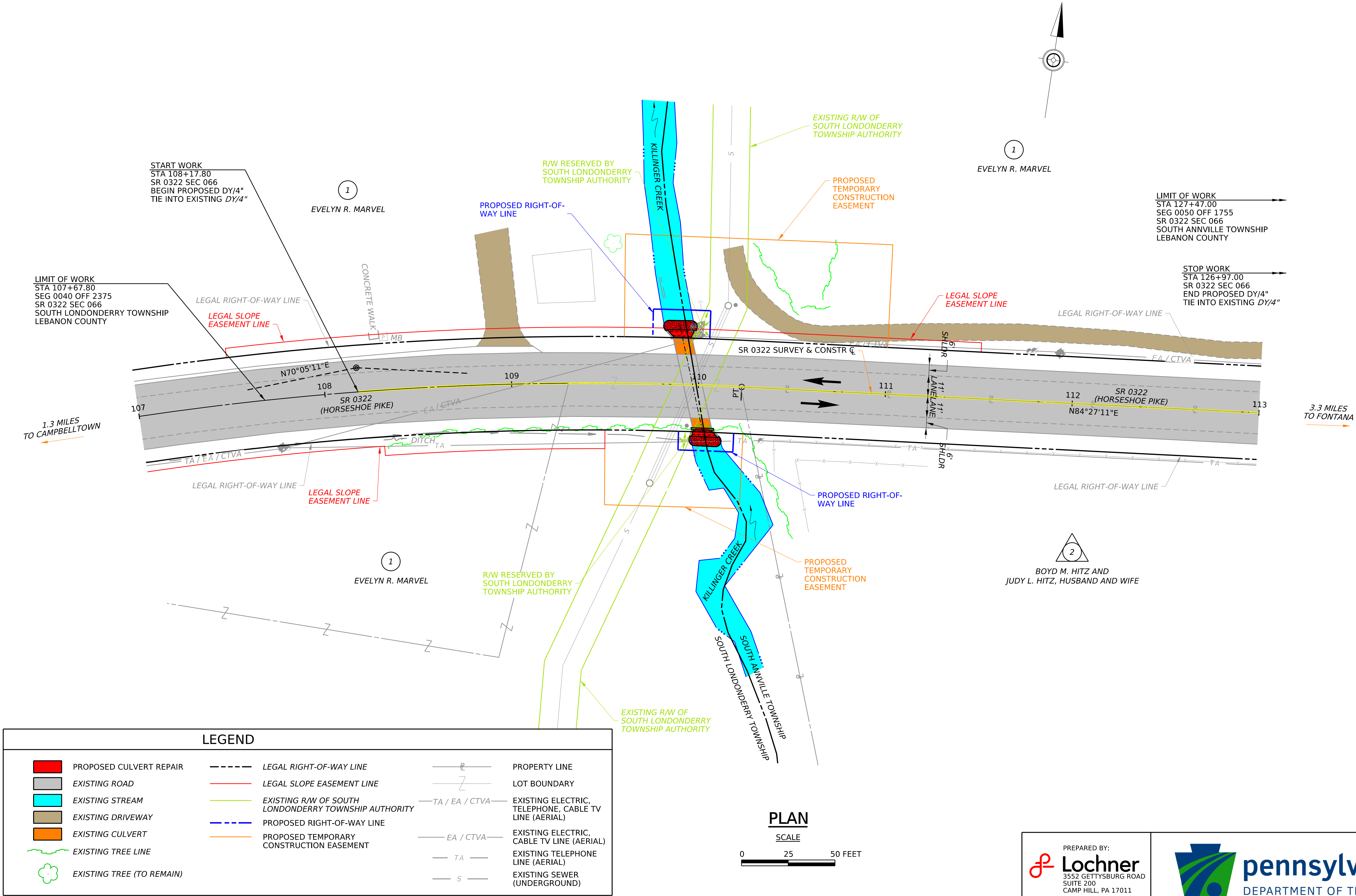


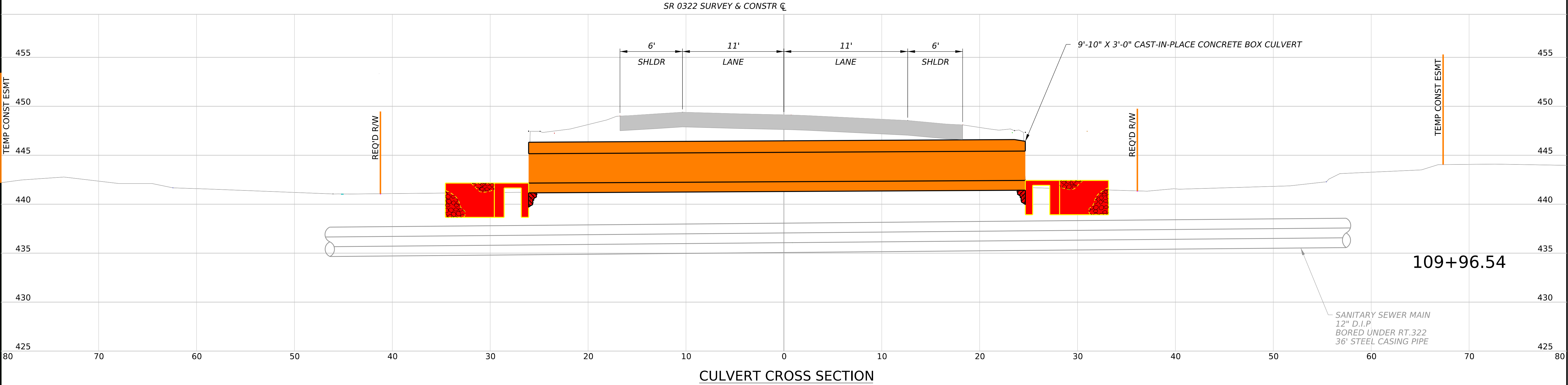
OPERATOR: brendan.oconnell
FILE NAME: pw://lochner-pw.bentley.com/lochner-pw-01/Documents/Projects/000021215/2_Design/Plans/Exhibits/Public Display/380322066_PUBLIC DISPLAY PLN.dgn
PLOTTED: 18-JUL-2025 09:04

SR 0322-066 BRIDGE CULVERT PRESERVATION PROJECT
SOUTH LONDONDERRY TOWNSHIP & SOUTH ANNVILLE TOWNSHIP, LEBANON COUNTY
PRELIMINARY PLAN



OPERATOR: brendan.oconnell
FILE NAME: pw:///lochner-pw.bentley.com/lochner-pw-01/Documents/Projects/000021215/2_Design/Plans/Exhibits/Public Display/380322066_PUBLIC DISPLAY XSEC.dgn
PLOTTED: 18-JUL-2025 09:08

SR 0322-066 BRIDGE CULVERT PRESERVATION PROJECT
SOUTH LONDONDERRY TOWNSHIP & SOUTH ANNVILLE TOWNSHIP, LEBANON COUNTY
PRELIMINARY PLAN



LEGEND	
	PROPOSED CULVERT REPAIR
	EXISTING CULVERT
	EXISTING PAVEMENT

SCALE

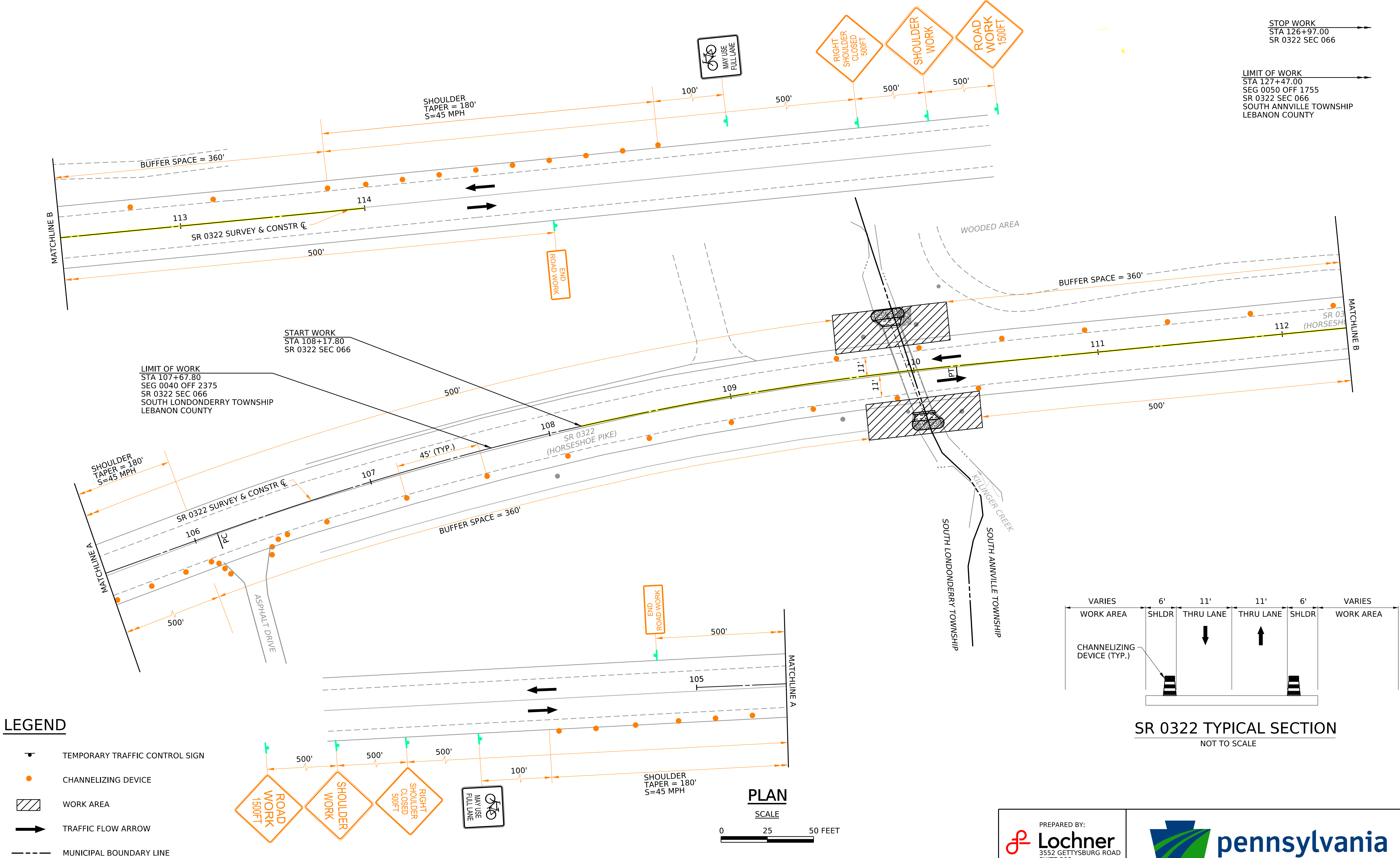
HORIZONTAL
0 5 10 FEET

VERTICAL
0 5 10 FEET

<p>PREPARED BY:</p> <p>Lochner 3552 GETTYSBURG ROAD SUITE 200 CAMP HILL, PA 17011</p>	<p>pennsylvania DEPARTMENT OF TRANSPORTATION</p>
--	---

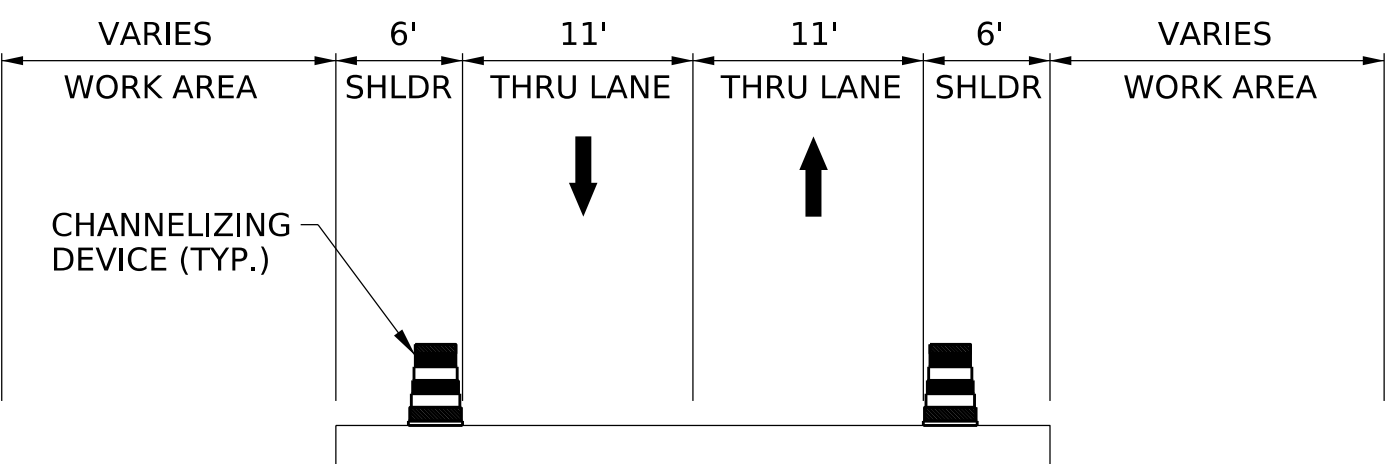
OPERATOR: brendan.oconnell
FILE NAME: pw://lochner-pw.bentley.com/lochner-pw-01/Documents/Projects/000021215/2_Design/Plans/Exhibits/Public Display/380322066_PUBLIC DISPLAY MPT_Plan.dgn
PLOTTED: 18-JUL-2025 09:11

SR 0322-066 BRIDGE CULVERT PRESERVATION PROJECT
SOUTH LONDONDERRY TOWNSHIP & SOUTH ANNVILLE TOWNSHIP, LEBANON COUNTY
PRELIMINARY TRAFFIC CONTROL PLAN

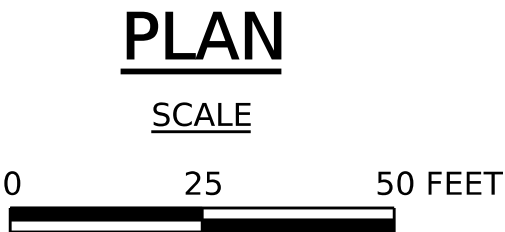


STOP WORK
STA 126+97.00
SR 0322 SEC 066

LIMIT OF WORK
STA 127+47.00
SEG 0050 OFF 1755
SR 0322 SEC 066
SOUTH ANNVILLE TOWNSHIP
LEBANON COUNTY



SR 0322 TYPICAL SECTION
NOT TO SCALE



PREPARED BY:

Lochner

3552 GETTYSBURG ROAD
SUITE 200
CAMP HILL, PA 17011

pennsylvania
DEPARTMENT OF TRANSPORTATION