

# SR 147 (S RIVER ROAD) OVER POWELLS CREEK PROJECT

## Reed Township, Dauphin County

### BRIDGE FEATURES:

- BUILT IN 1840  
(THREE-SPAN STONE MASONRY ARCH)

### PURPOSE:

- THE PURPOSE OF THIS PROJECT IS TO PROVIDE A SAFE AND RELIABLE ROADWAY FOR THE TRAVELING PUBLIC BY PROACTIVELY ADDRESSING STRUCTURAL DEFECTS AND DRAINAGE DEFICIENCIES OF THE EXISTING BRIDGE.

### ANTICIPATED PROJECT SCHEDULE:

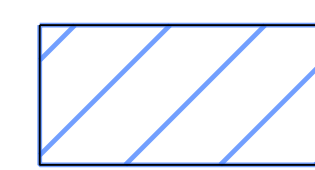
(SUBJECT TO CHANGE)

- AWARD CONTRACT  
SUMMER 2027

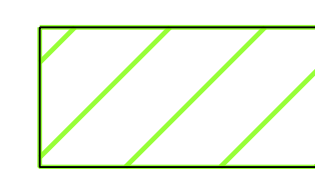
- CONSTRUCTION  
SPRING/SUMMER 2028

- ANTICIPATED CONSTRUCTION DURATION  
6 MONTHS

### RESOURCES:



SR 147 BRIDGE /  
WICONISCO CANAL AQUEDUCT NO. 3  
(LISTED RESOURCE NO. 1986RE00654)



NORTHERN CENTRAL RAILWAY  
HISTORIC DISTRICT  
(ELIGIBLE RESOURCE NO. 2010RE03887)



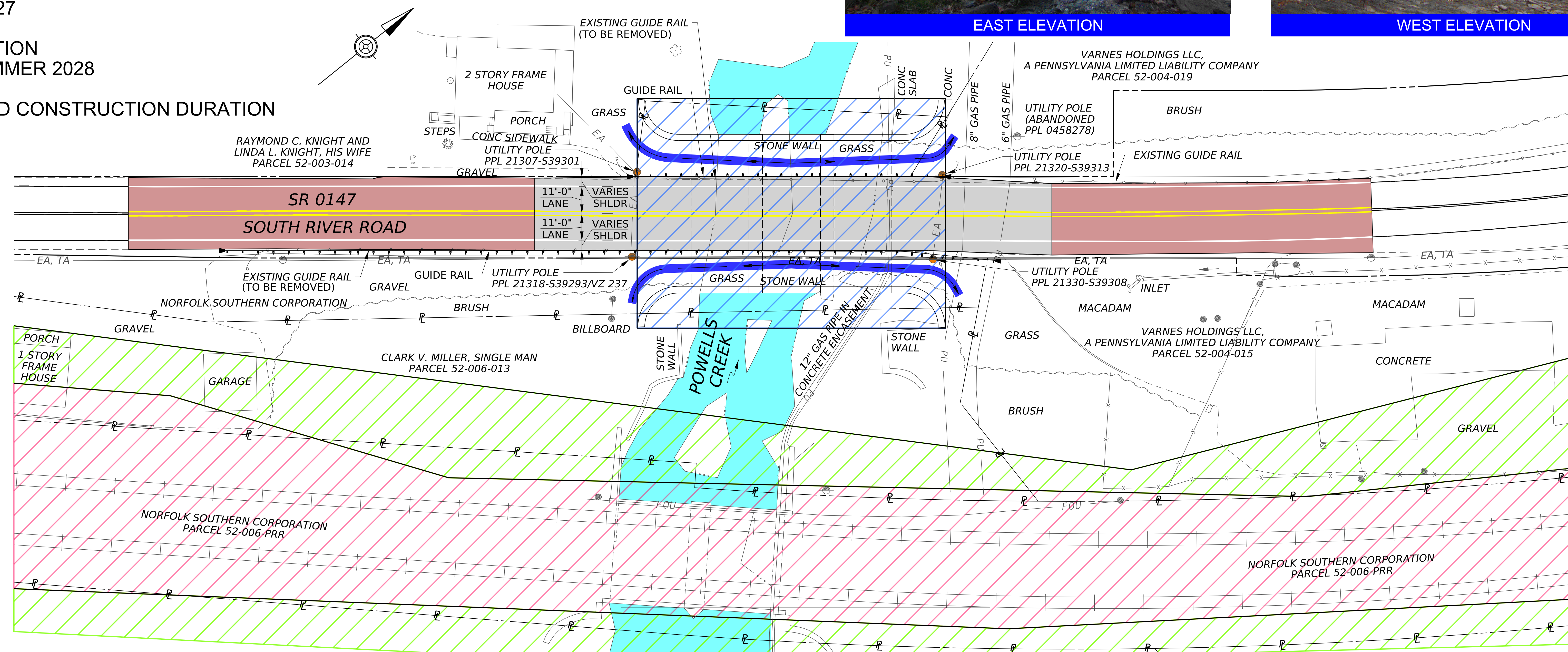
NORTHERN CENTRAL RAILWAY  
(ROCKVILLE TO SUNBURY)  
HISTORIC DISTRICT  
(ELIGIBLE RESOURCE NO. 2019RE19789)



EAST ELEVATION



WEST ELEVATION



### LEGEND

- EXISTING UTILITY POLE TO BE RELOCATED
- PROPOSED SWALE
- MILL AND OVERLAY
- FULL DEPTH ROADWAY
- POWELLS CREEK



# SR 147 (S RIVER ROAD) OVER POWELLS CREEK PROJECT

## Reed Township, Dauphin County



ROADWAY VIEW FROM SOUTH APPROACH

