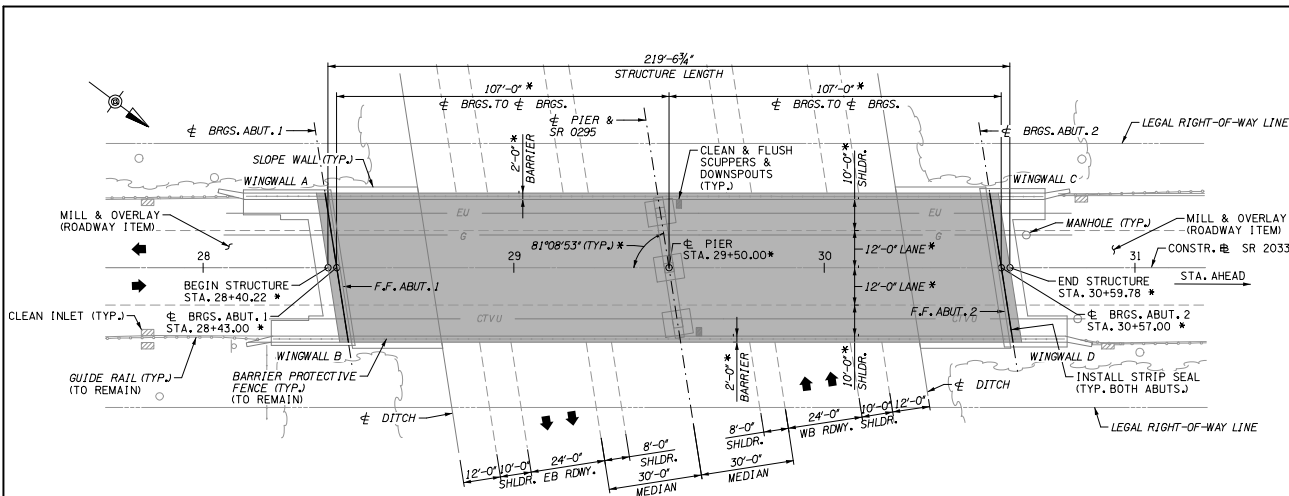
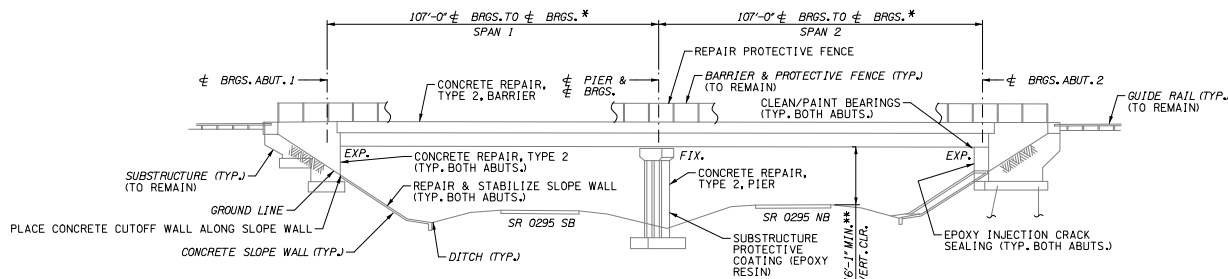


FILE: \\MME\pww\gmet-pw\znt\ycom\gmet-pw\01 Documents\Project\A2315\Group 1\OUTPUT\COMP_03 - SR2033 Woodbourne Road\Group 1\Gannett Fleming\BRD\LOT2033 Woodbourne gpl.dgn
DATE: 6/9/2020 TIME: 2:31:06 PM



PLAN
20' 10' 0 20' 40'



ELEVATION
20' 10' 0 20' 40'

PREPARED BY:
GANNETT FLEMING, INC.
1010 ADAMS AVENUE
AUBURN, PA 15403-2402

PRELIMINARY
NOT FOR CONSTRUCTION
JUNE 2025

_____, 2020

INDEX OF DRAWINGS

SHEET NUMBER	TITLE
1	GENERAL PLAN & ELEVATION
2	TYPICAL SECTIONS & LOAD RATINGS
3	GENERAL NOTES

REHABILITATION SCOPE OF WORK

1. PERFORM 1/4" SCARIFICATION OF THE EXISTING BRIDGE DECK
2. PERFORM HYDRODEMOLITION OF THE EXISTING BRIDGE DECK
3. PLACE LATEX MODIFIED CONCRETE WEARING SURFACE, 1 1/4" DEPTH ON BRIDGE DECK
4. MILL AND PAVE BOTH ROADWAY APPROACHES (ROADWAY ITEM)
5. INSTALL STRIP SEAL AT BOTH ABUTMENTS
6. PERFORM CONCRETE REPAIRS, TYPE 2 ON CONCRETE BARRIER
7. REPAIR PROTECTIVE FENCE
8. PERFORM CONCRETE REPAIR, TYPE 2 AND EPOXY INJECTION CRACK SEALING AT BOTH ABUTMENTS
9. PERFORM CONCRETE REPAIR, TYPE 2 AT PIER
10. REPAIR CONCRETE SLOPE WALL AT BOTH ABUTMENTS; PLACE CUTOFF WALL AT TOP OF SLOPE WALL
11. APPLY SUBSTRUCTURE PROTECTIVE COATING (EPOXY RESIN) TO PIER COLUMNS
12. CLEAN AND PAINT BEARINGS AT BOTH ABUTMENTS
13. CLEAN AND FLUSH SCUPPERS AND DOWNSPOUTS

HORIZONTAL CURVE DATA: VERTICAL CURVE DATA:

SR 2033 SR 2033
MATCH EXISTING HORIZONTAL GEOMETRY MATCH EXISTING VERTICAL GEOMETRY

LEGEND:

- TRAFFIC DIRECTION
- * BASED ON INFORMATION PROVIDED ON EXISTING PLANS (S-8754). VERIFY IN THE FIELD.
- ** BASED ON 2018 INSPECTION REPORT
- LIMITS OF SCARIFICATION, HYDRODEMOLITION, AND LATEX MODIFIED CONCRETE WEARING SURFACE, 1 1/4" DEPTH

NOTES:

1. LMC TO BE USED AS A PATCHING MATERIAL SIMULTANEOUSLY WITH OVERLAY OPERATION IN ACCORDANCE WITH PUBLICATION 408, SECTION 1040(F) AND SPECIAL PROVISIONS.

Mark	Description	By	Chk'd	Rec'd	Date
REVISIONS					

S.R. 2033 PREVIOUSLY KNOWN AS A-210
BMS STR ID: 09-2033-0090-2877 MPMS/ECMS PROJ: 113813 BRKEY: 7242

COMMONWEALTH OF PENNSYLVANIA
DEPARTMENT OF TRANSPORTATION

BUCKS COUNTY

SR 2033 SECTION HB1
SEGMENT 0090 OFFSET 2877
S.R. 2033 (WOODBOURNE ROAD) STA. 29+50.00
OVER S.R. 0295

REHABILITATION OF 2-SPAN CONTINUOUS STEEL MULTI-GIRDER BRIDGE
GENERAL PLAN & ELEVATION

RECOMMENDED	SHEET 1 OF 3 + SUPPLEMENTAL DWGS.
DISTRICT 6-0 BRIDGE ENGINEER	S-XXXXX

DES: MMC CKD: SCA DWG: BMJ CKD: MMC

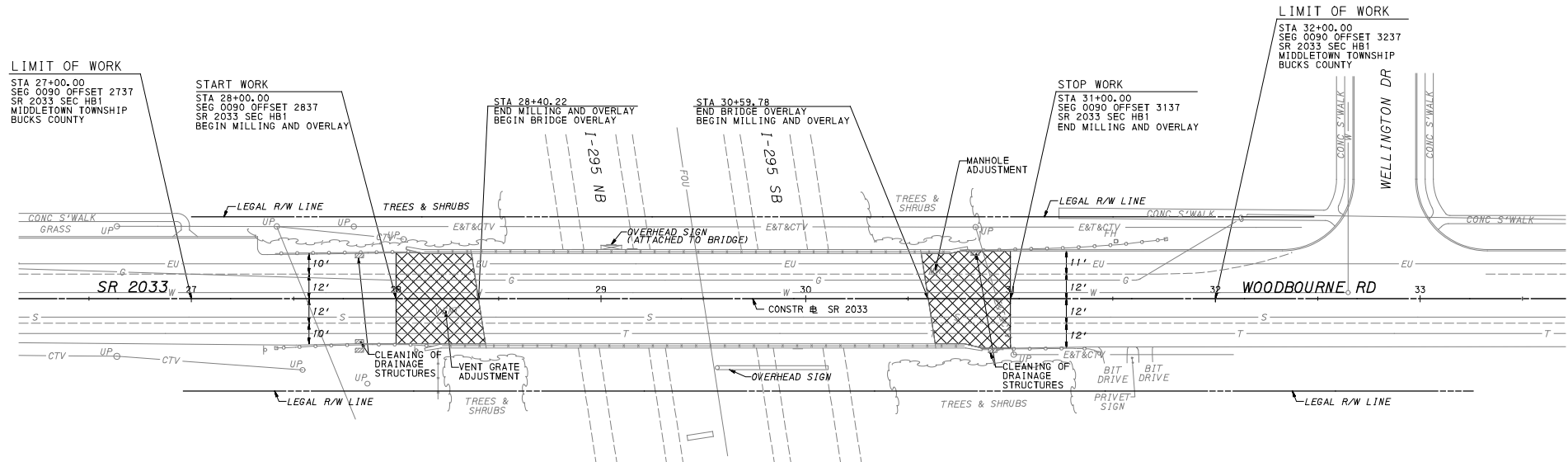
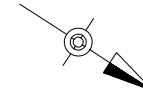
SUPPLEMENTAL DRAWINGS

FILE NAME: p:\gfm\p-w-bentley.com\gfm\p-w-01\Documents\Projects\62315_Group 1\OUTPUT\COMP_03 - SR2033 Woodbourne Road\Group X\Gannett Fleming\ROAD\PLT\SR20333-P.dgn
DATE: 3/26/2024

DISTRICT	COUNTY	ROUTE	SECTION	SHEET
6-0	BUCKS	2033	HB1	7 OF 12
MIDDLETOWN TOWNSHIP				
REVISION NUMBER	REVISIONS			DATE BY

NOTES:

MATCH PROPOSED DECK ELEVATION WITH PROPOSED OVERLAY.
INFORMATION SHOWN ON THIS PLAN IS NOT BASED ON SURVEY.
DIMENSIONS AND GEOMETRY ARE APPROXIMATE AND ARE BASED
ON RECORD PLANS.
VERIFY ALL DIMENSIONS IN THE FIELD AS NECESSARY FOR THE
PROPOSED REHABILITATION.
NORTH ARROW ORIENTATION SET TO MATCH BRIDGE PLANS.



LEGEND



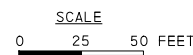
VARIABLE DEPTH MILLING 1-1/2" TO 1/4"
AND OVERLAY 1-1/2" DEPTH
(SEE PAVEMENT TRANSITION DETAIL)

- E — PECO ENERGY (AERIAL LINE)
- EU — PECO ENERGY (ATTACHED TO BRIDGE)
- G — PECO ENERGY (ATTACHED TO BRIDGE)
- T — VERIZON PENNSYLVANIA LLC (AERIAL LINE)
- CTV — COMCAST CABLE COMMUNICATIONS INC (AERIAL LINE)
- CTVU — COMCAST CABLE COMMUNICATIONS INC (ATTACHED TO BRIDGE)
- S — BUCKS COUNTY WATER AND SEWER AUTHORITY (ATTACHED TO BRIDGE)
- W — BUCKS COUNTY WATER AND SEWER AUTHORITY (ATTACHED TO BRIDGE)
- FOU — PENNDOT (FIBER OPTIC)

ALL UTILITY INFORMATION HEREON IS DEPICTED TO QUALITY
LEVEL "D" (QL-D) UNLESS OTHERWISE NOTED.

EXISTING STRUCTURE DATA
STA: 29+50.00
2-SPAN CONTINUOUS WELDED STEEL I-GIRDER
SPAN 1 & 2: 107'-0"
CLEARANCE: 16'-1"
SKEW: 81°08'53"
CLEAR ROW WIDTH: 44'-0"
STRUCTURE #: S-8754

PROPOSED STRUCTURE DATA
STA: 29+50.00
2-SPAN CONTINUOUS STEEL I-GIRDER
SPAN 1 & 2: 107'-0"
CLEARANCE: 16'-1"
SKEW: 81°08'53"
CLEAR ROW WIDTH: 44'-0"
STRUCTURE #: S-39666
RECOMMENDED:



SR 2033
ROADWAY PLAN

PREPARED BY:
GANNETT FLEMING, INC.
AUDUBON, PA

PRELIMINARY
NOT FOR
CONSTRUCTION
JUNE 2025