

# **US 1 INTELLIGENT TRANSPORTATION SYSTEMS (ITS) IMPROVEMENT PROJECT IN DELAWARE COUNTY**



**MADELEINE C. FAUSTO, PROJECT MANAGER, PENNDOT**

**BRIAN LAPINSKY, PROJECT MANAGER, ROSSI GROUP**

**RYAN BINDER, CIVIL ENGINEER, JACOBS**

**HEATHER COONS, ENVIRONMENTAL PLANNER, ROSSI GROUP**

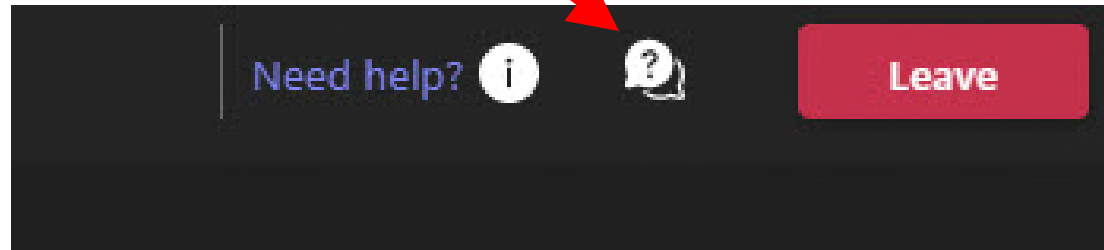
**JUNE 18, 2025**



**Pennsylvania  
Department of Transportation**

# QUESTIONS?

Questions can be submitted by clicking on the Q&A feature located at the top of your screen.



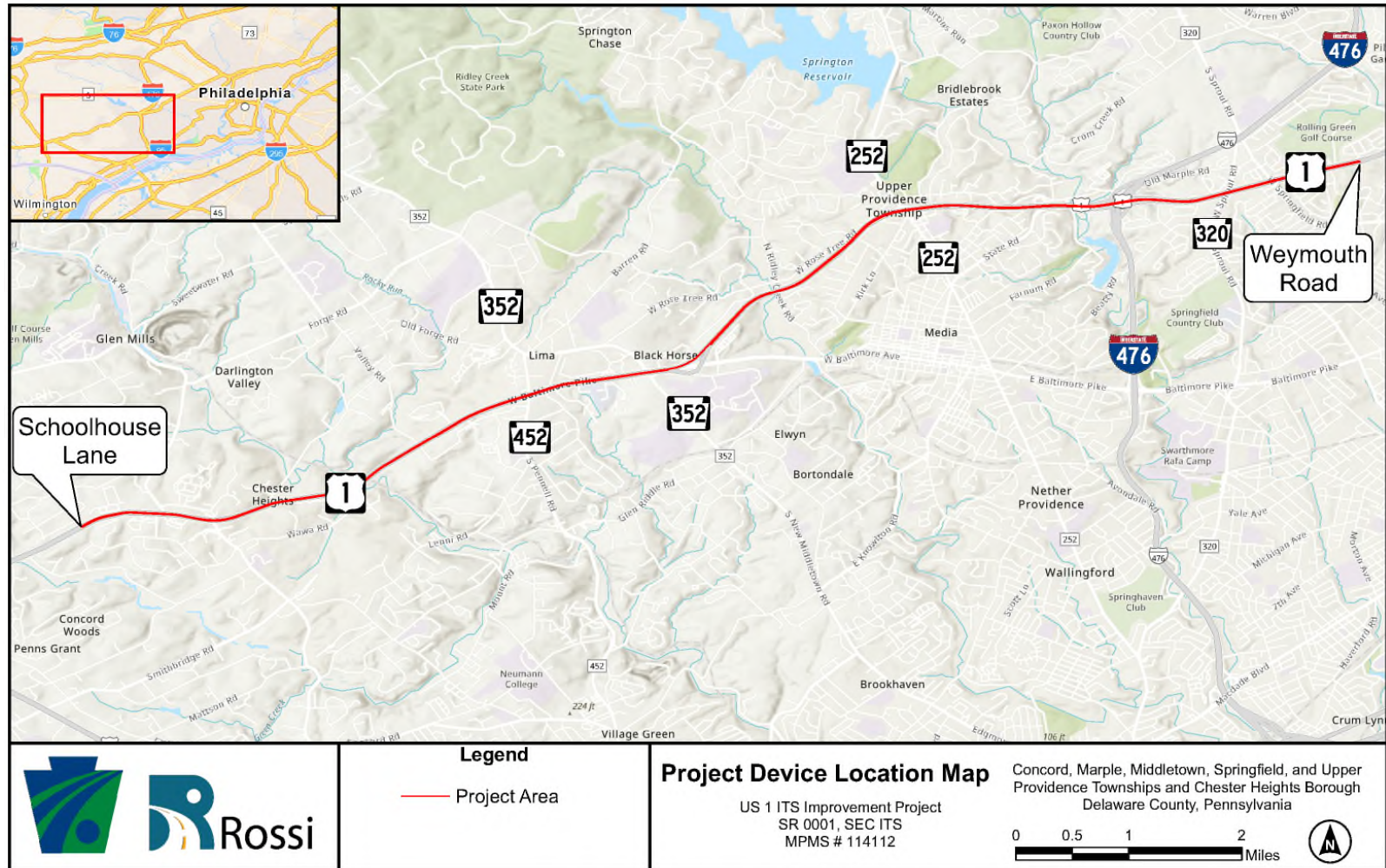
Please note the slide number in your question.

# AGENDA

- ✓ Project Location
- ✓ Project Purpose and Needs
- ✓ Regional Traffic Management Center
- ✓ 511PA
- ✓ Proposed ITS Improvements
- ✓ Existing Conditions (Route 252)
- ✓ Proposed Improvements (Route 252)
- ✓ Traffic Control During Construction
- ✓ Other Considerations
- ✓ Project Schedule
- ✓ Questions



# PROJECT LOCATION



# PROJECT PURPOSE AND NEEDS

## **PURPOSE**

To improve traffic flow and reduce congestion and emissions along the US 1 and Route 252/US 1 interchange.

## **NEEDS**

### Congestion Reduction:

- Recurring congestion is prevalent along US 1 due to high traffic volumes and numerous signalized intersections that impede traffic flow. Traffic queuing and congestion also occurs along Route 252 at the interchange with Media Bypass resulting in idling vehicles.

### Traffic Flow Improvements:

- Missing Intelligent Transportation System (ITS) devices and Changeable Messaging Signs (CMS) prevent efficient incident response and impede traveler information capabilities to monitor traffic flow and congestion.



# PENNDOT 6-0 SOUTHEASTERN REGIONAL TRAFFIC MANAGEMENT CENTER (RTMC)



# RTMC OPERATIONS AND FUNCTIONS

TRAFFIC  
DETECTION

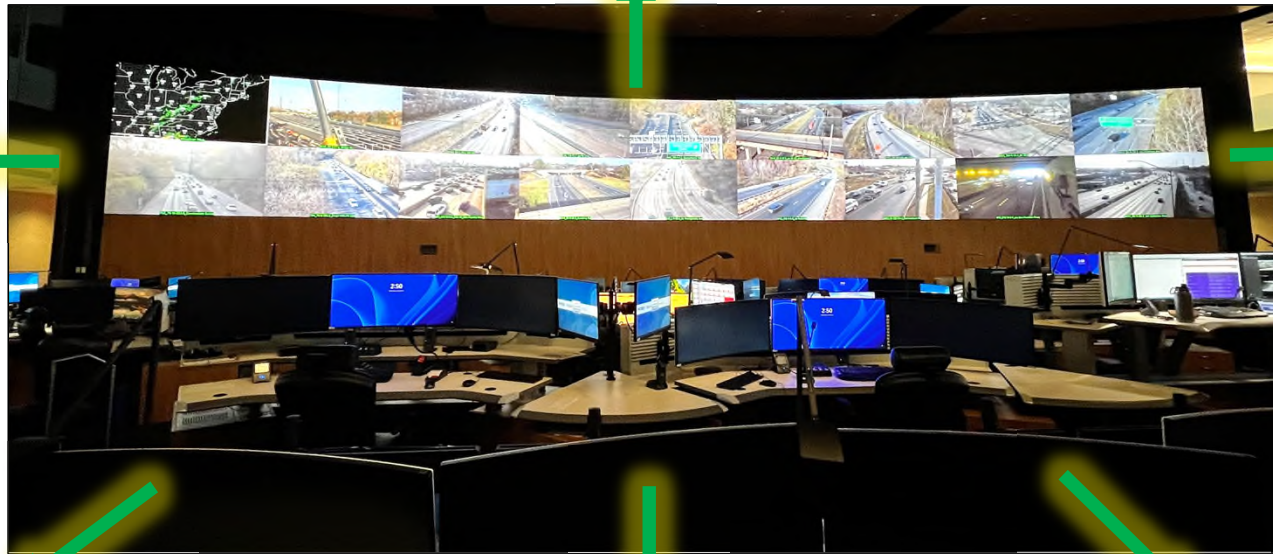
TRAFFIC  
SIGNALS

SERVICE  
PATROL

TRAVELER  
INFORMATION

VIDEO

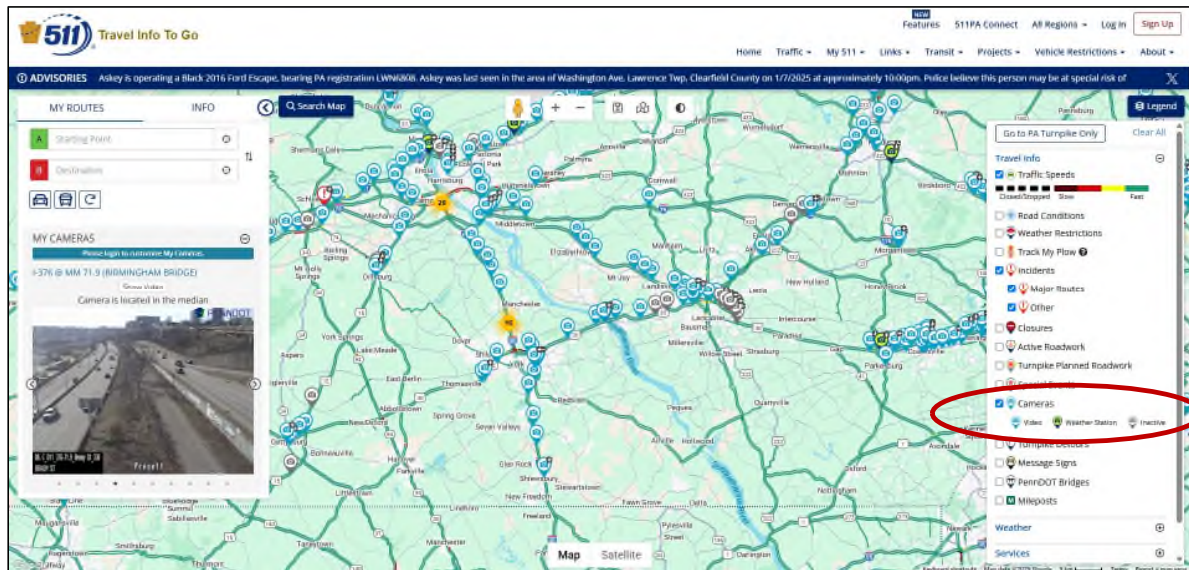
COMMUNICATIONS  
NETWORK





# 511PA (WEBSITE)

Provides up to the minute traffic and transit information for Pennsylvania (<https://www.511pa.com/>).



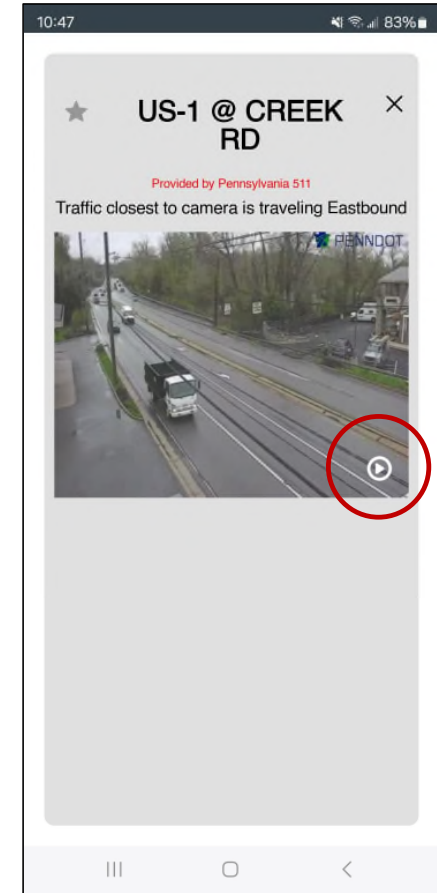
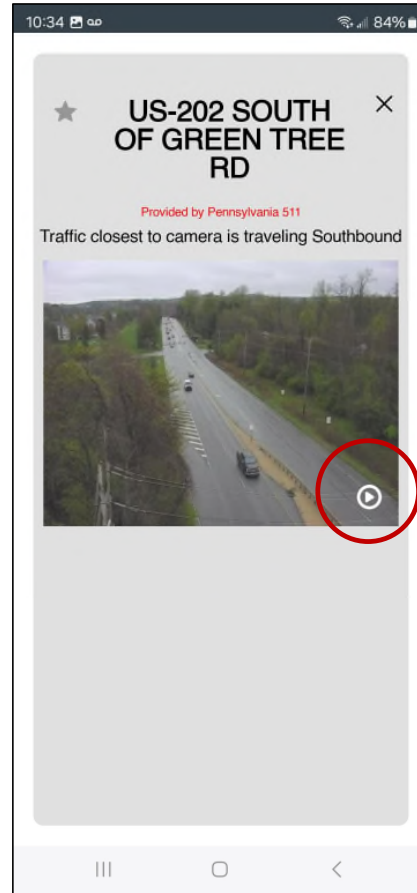
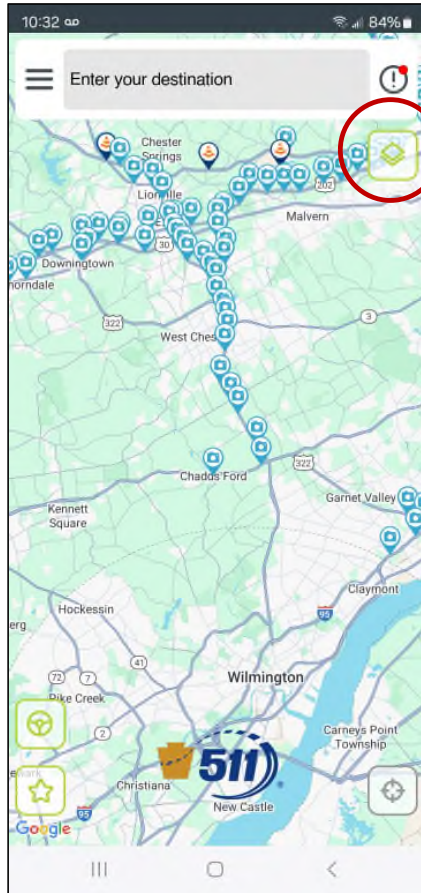
- Pan and/or zoom in to see a specific camera.
- Click on “Camera” icon to see real-time traffic.
- Click on “Show Video” to view live stream traffic.



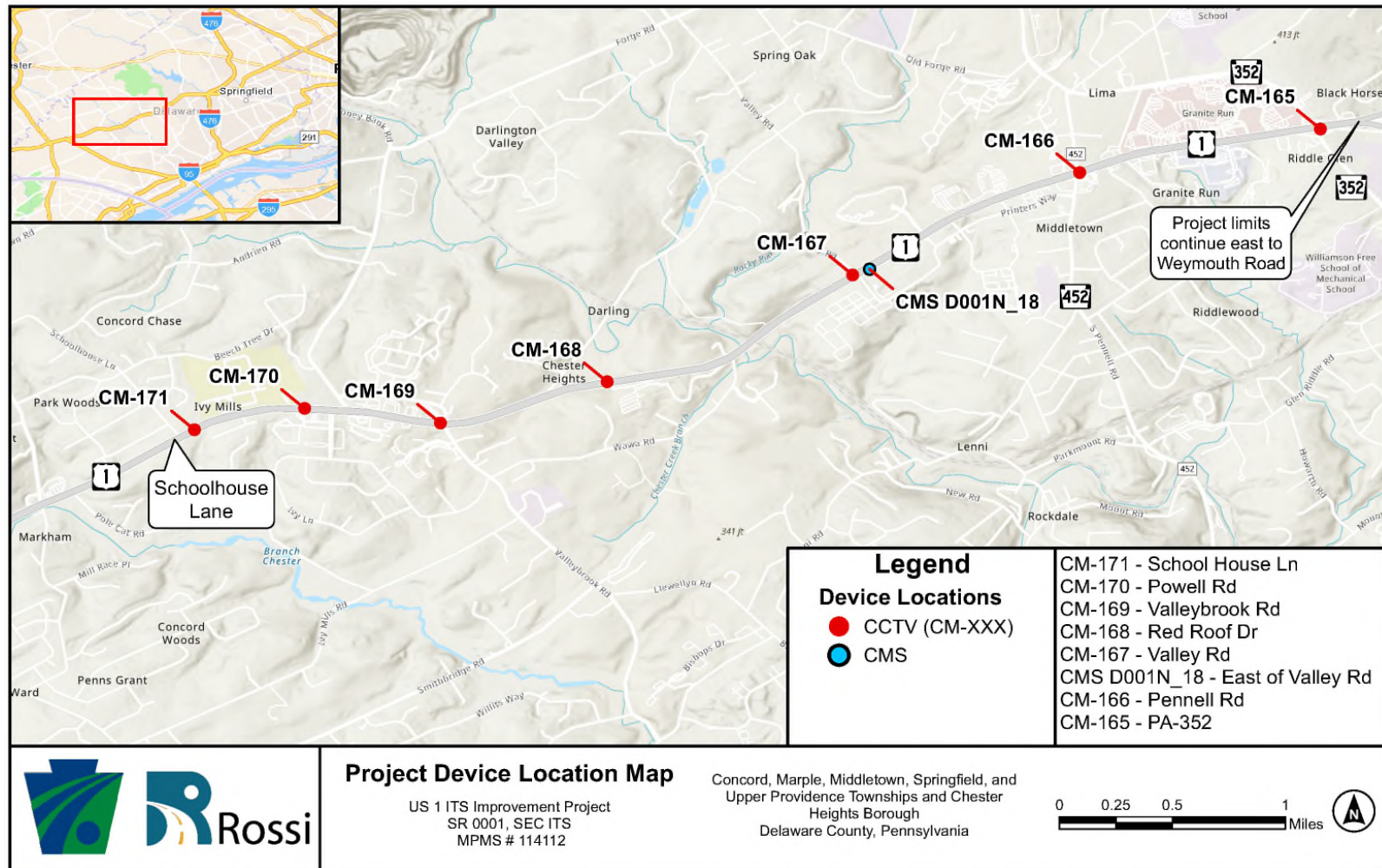


# 511PA (MOBILE APP)

Provides up to the minute traffic and transit information for Pennsylvania (<https://www.511pa.com/>).

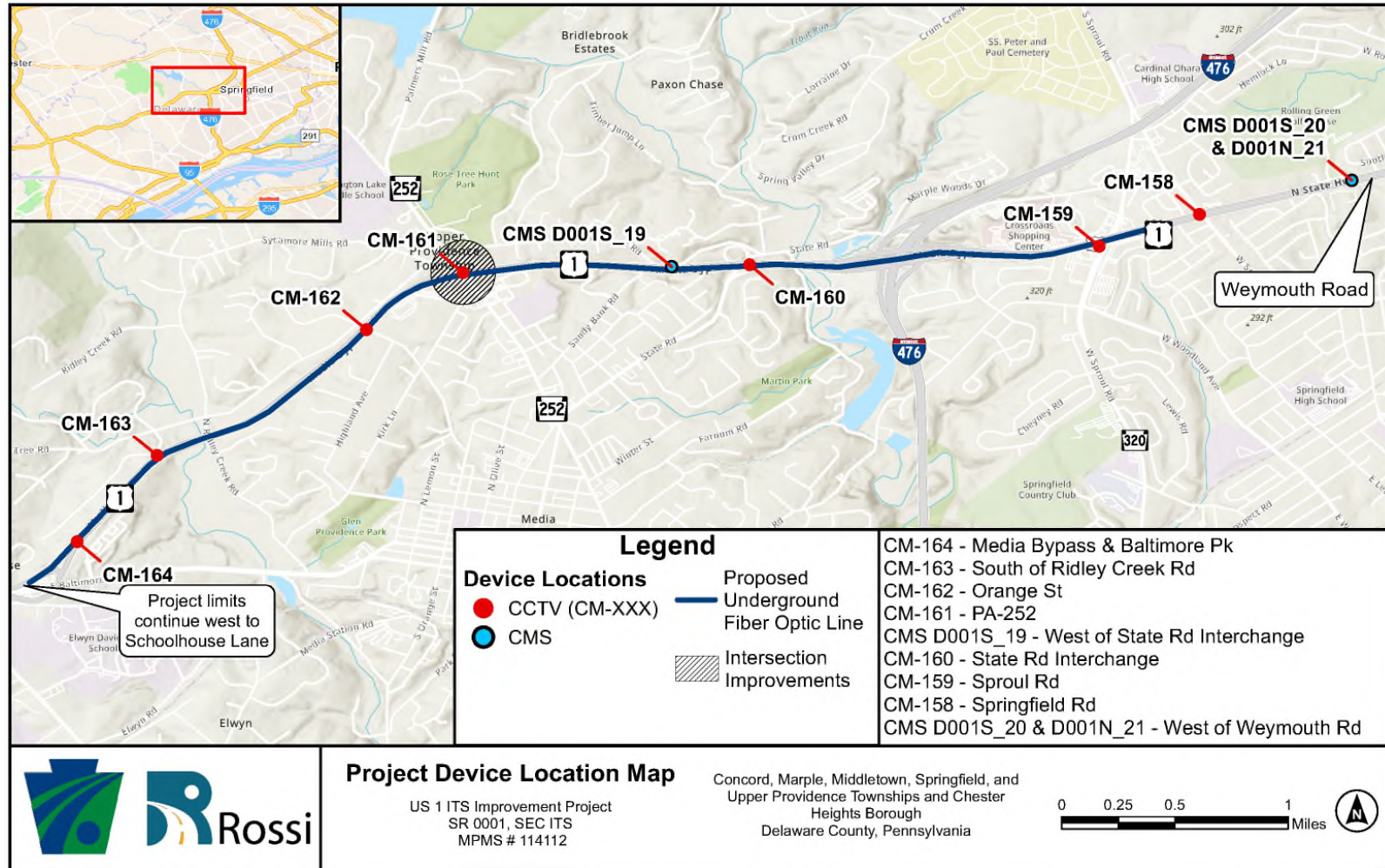


# LOCATION OF PROPOSED IMPROVEMENTS (WEST)





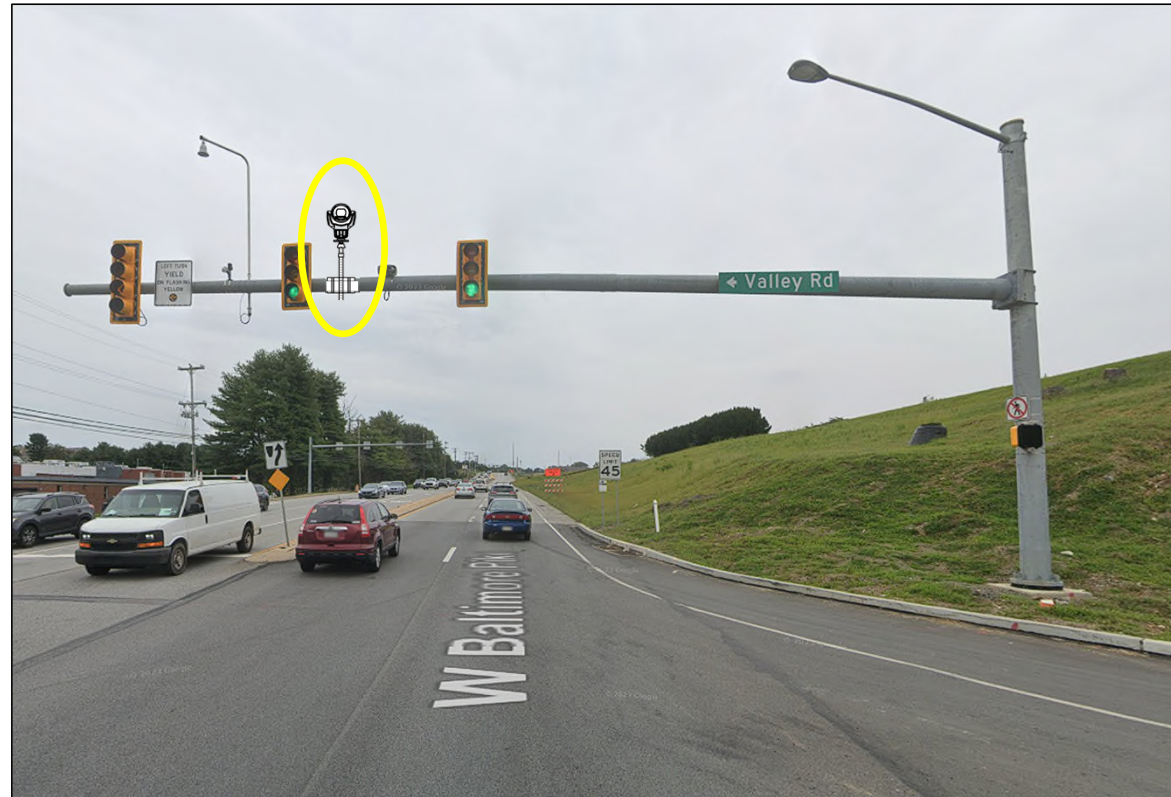
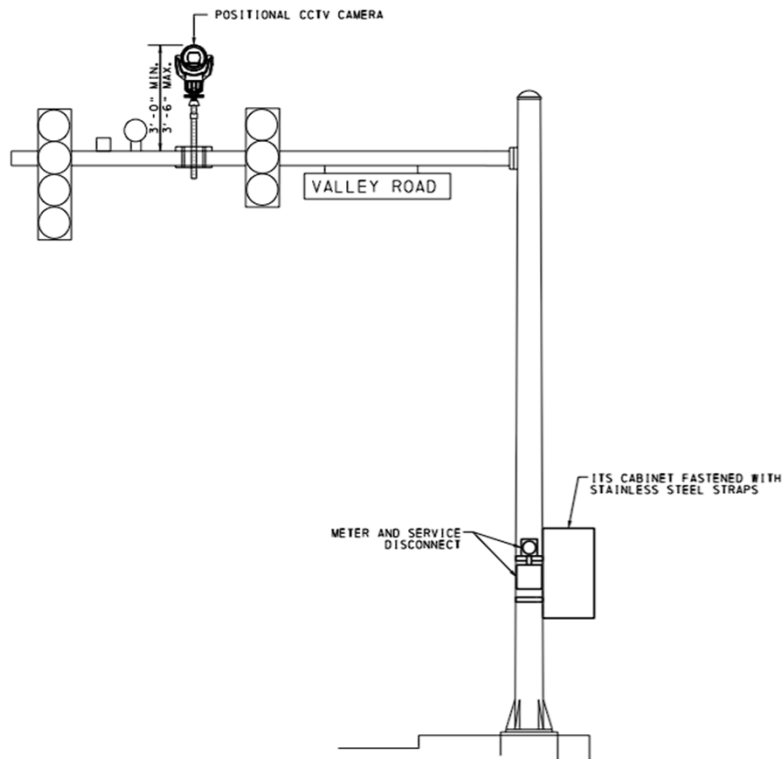
# LOCATION OF PROPOSED IMPROVEMENTS (EAST)





# PROPOSED IMPROVEMENTS (ITS)

## Traffic Signal-Mounted CCTV Camera Example



# PROPOSED IMPROVEMENTS (ITS)

## Pole/Bridge-Mounted CCTV Camera Examples

Pole-Mounted CCTV Cameras

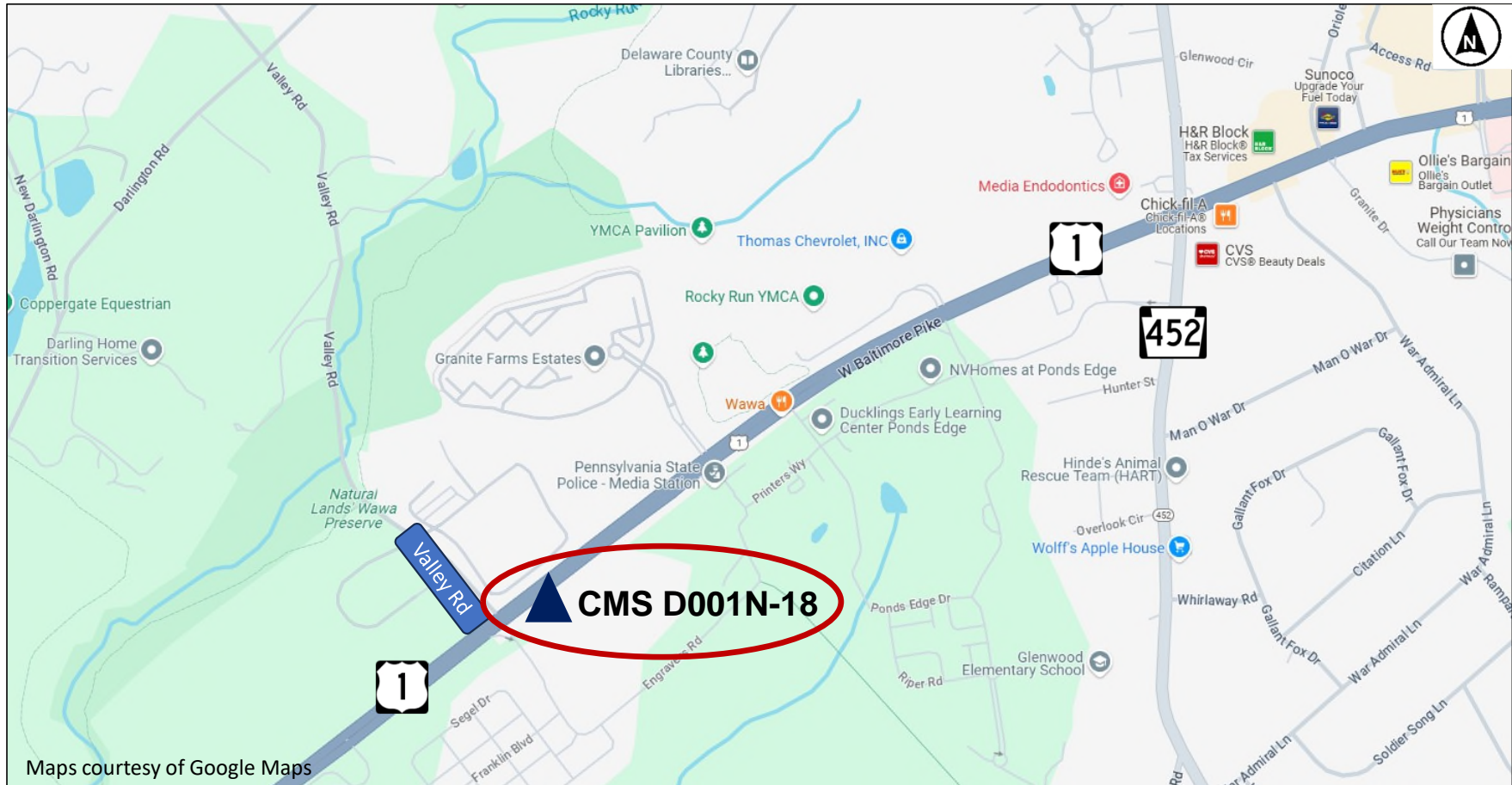


Bridge-Mounted CCTV Cameras



# CMS: WEST OF RT 452

Northbound side of US 1, approx. 230 ft north of Valley Road





# CMS: WEST OF RT 452

**Mount Type:** Type A



**Changeable Message Sign (CMS) Type A Example**  
Google Street View screenshots of locations are approximate.



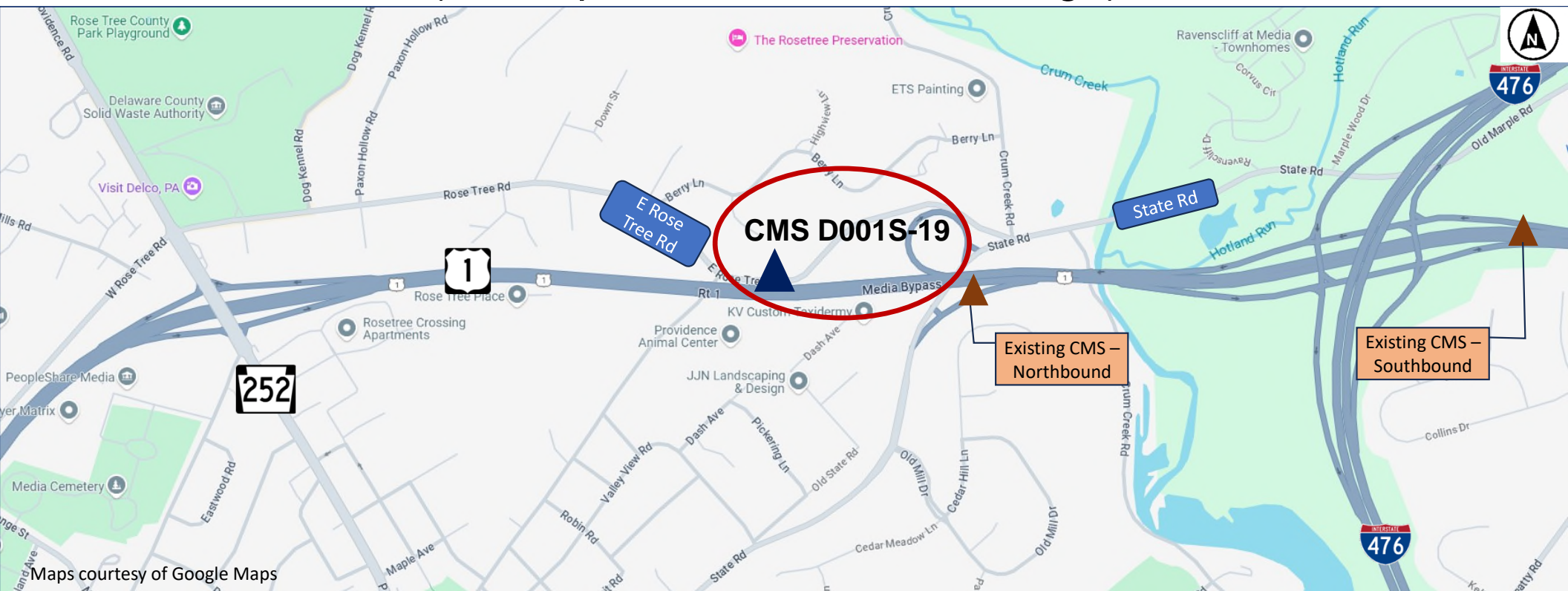
# EXAMPLE CMS: CHEYNEY ROAD





# CMS: NEAR RT 252

Southbound side of US 1, approx. 1200 ft south of State Road  
(will require relocation of exit sign)





# CMS: NEAR RT 252

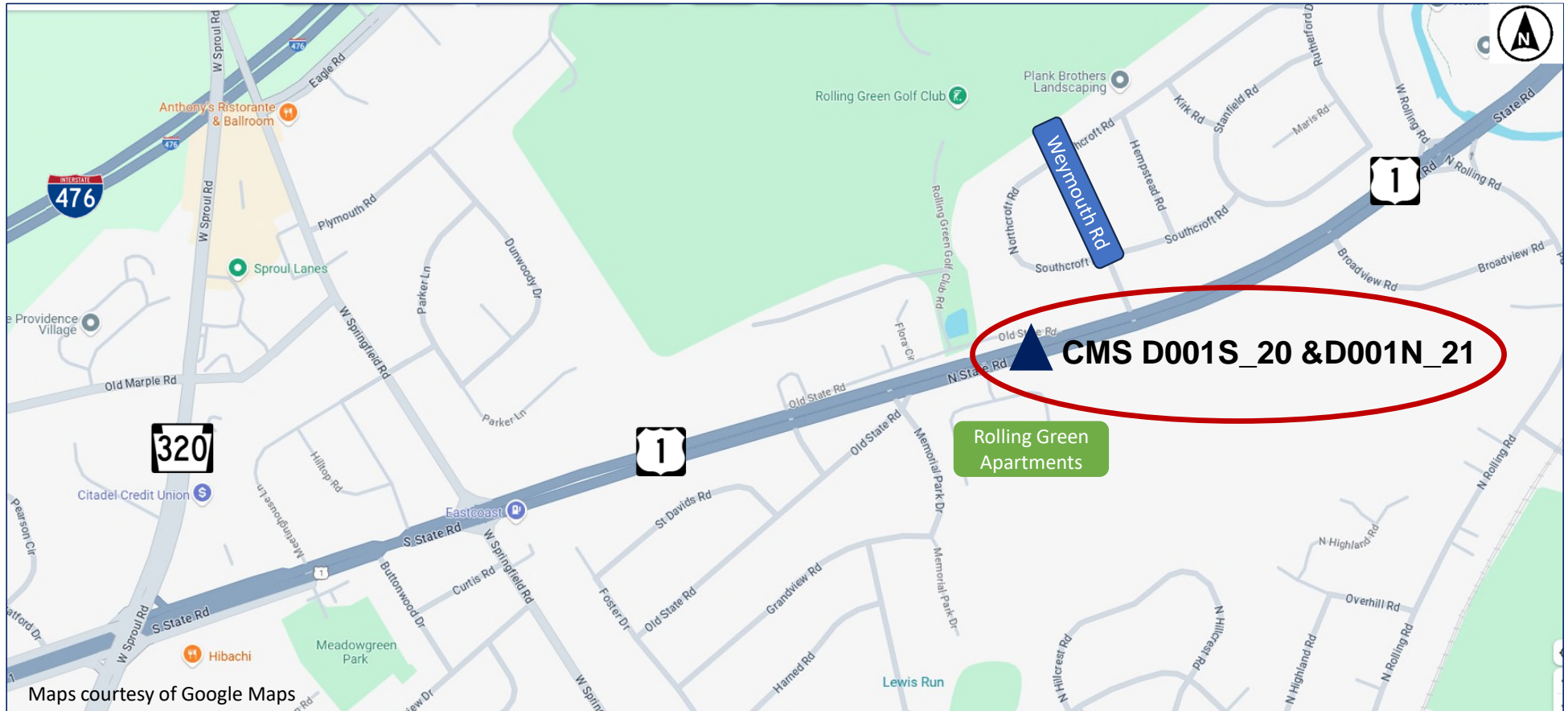
**Mount Type:** Centermount (will require relocation of exit sign)



Changeable Message Sign (CMS) Centermount Example  
Google Street View screenshots of locations are approximate.

# CMS: WEYMOUTH ROAD

In median, approx. 500 ft west of Weymouth Road





# CMS: WEYMOUTH ROAD

**Mount Type:** Double-sided centermount

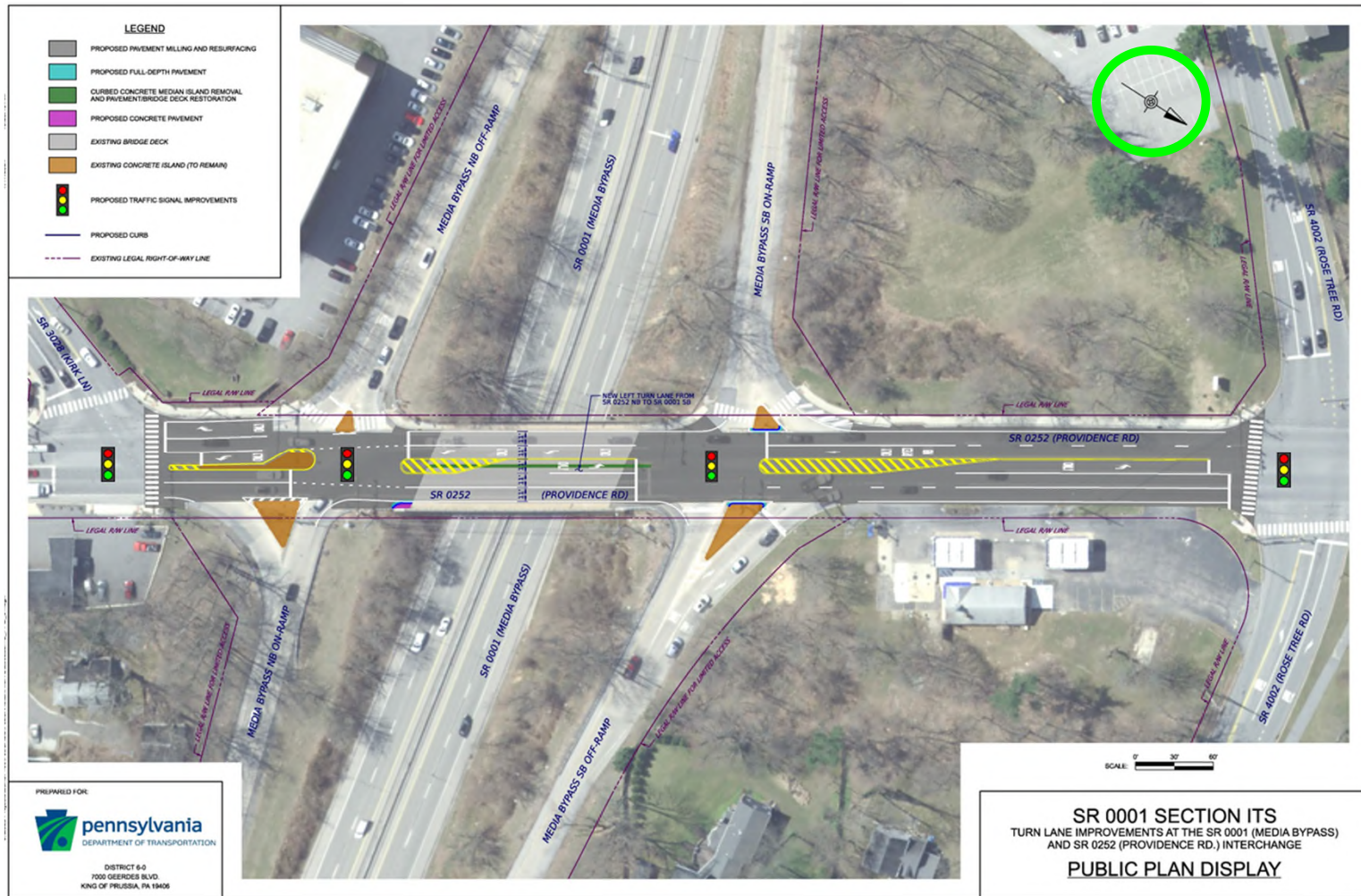


**Changeable Message Sign (CMS) Double-Sided Centermount Example**  
Google Street View screenshots of locations are approximate.



## 21

# PROPOSED IMPROVEMENTS (RT 252)

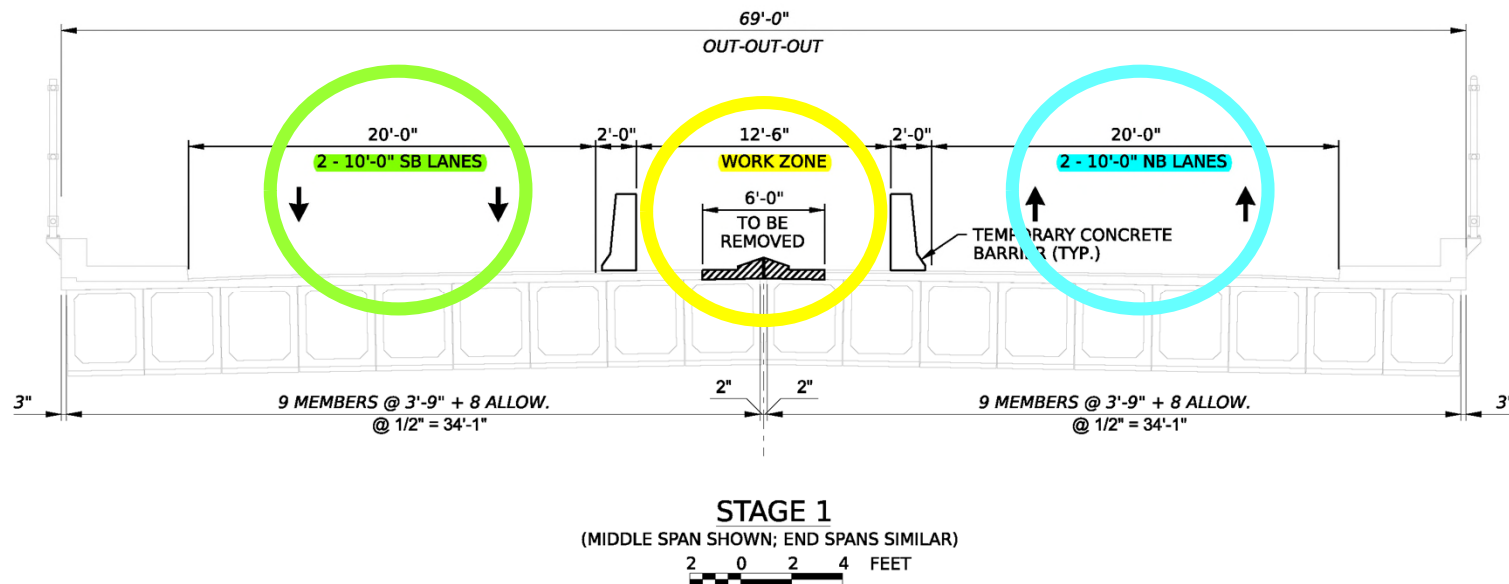




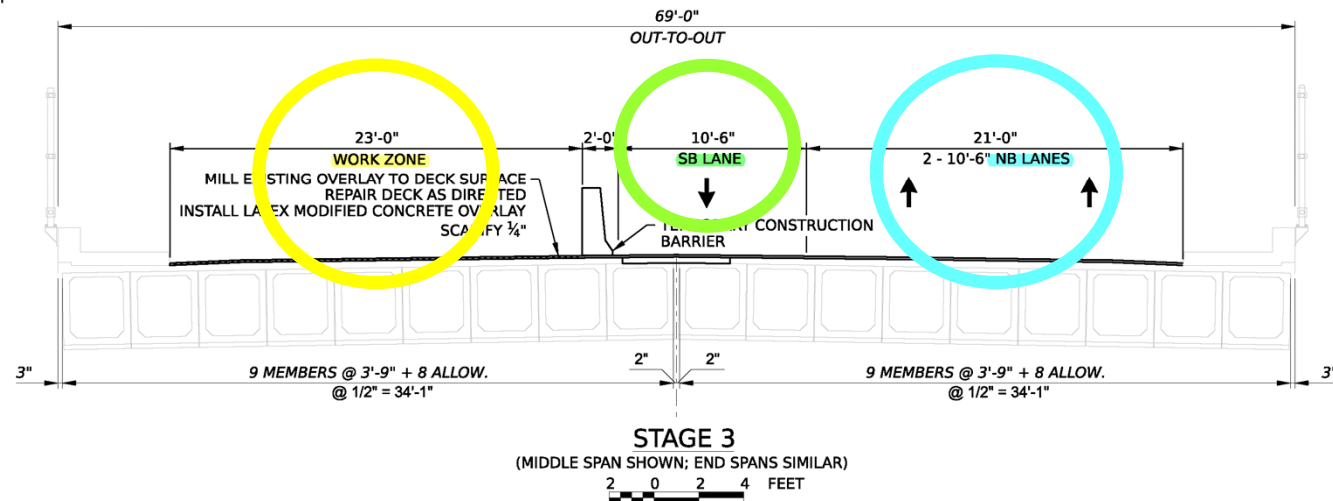
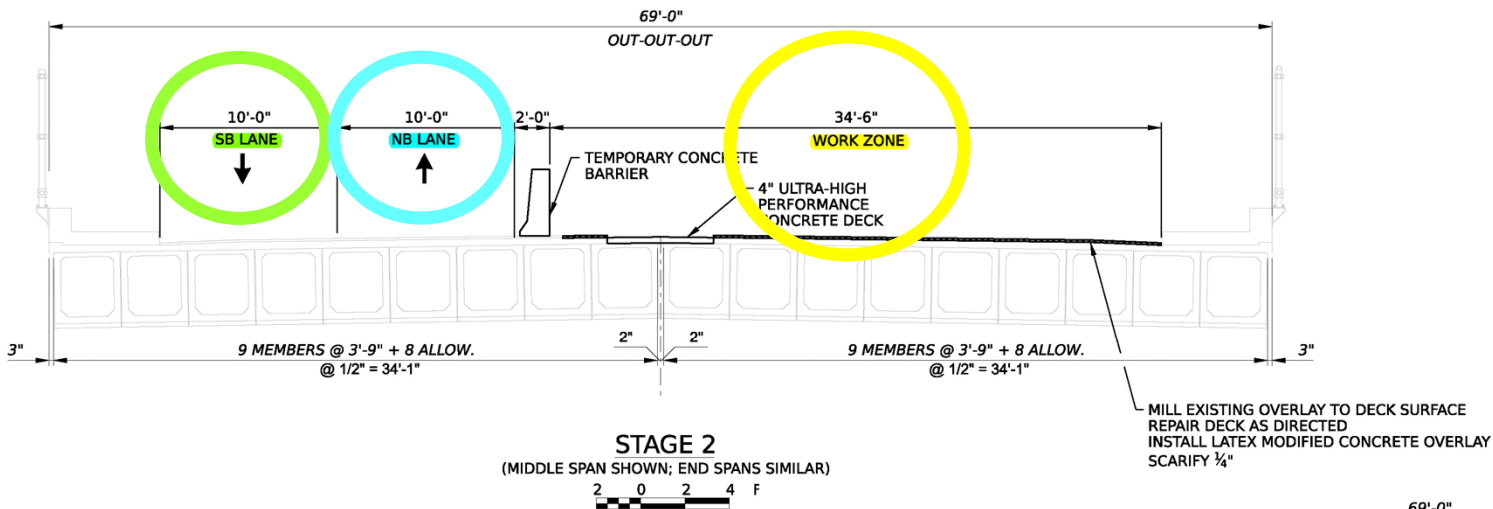
# TRAFFIC CONTROL DURING CONSTRUCTION

## • Traffic Control During Construction

- ITS device installation will require temporary, short-term lane closures with normal traffic patterns reopened at the end of each workday.
- Route 252/US 1 operational improvements construction will occur in staged lane shifts, with three main stages.



# TRAFFIC CONTROL DURING CONSTRUCTION





# OTHER CONSIDERATIONS

- **Environmental Resources**

- Impacts to environmental resources, to include property impacts, are not anticipated as all work will be conducted within the existing PennDOT right-of-way.
- Scoping Field View conducted March 2023.
- Bridge and Roadway Programmatic Agreement (BRPA) approved August 2024.

- **Utility Coordination**

- Fiber optic lines will be installed underground in conduit from the Media Bypass interchange to W. Springfield Road.
- No utility relocation activity is anticipated.
- Utility company coordination will ensure conflicts are anticipated and mitigated prior to construction.

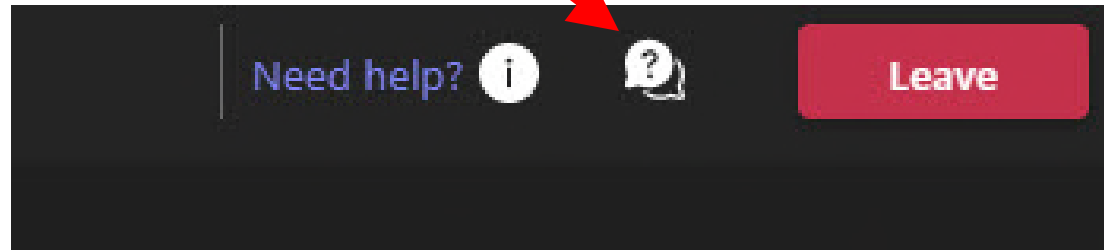
# PROJECT SCHEDULE

	2024	2025	2026	2027	2028	2029
<b>Preliminary Engineering</b>						
<b>Final Design, ROW, Permitting &amp; Utility Coordination</b>						
<b>Anticipated Construction</b>						



# QUESTIONS?

Questions can be submitted by clicking on the Q&A feature located at the top of your screen.



Please note the slide number in your question.

# THANK YOU FOR PARTICIPATING!

FOR MORE INFORMATION, VISIT THE PENNDOT DISTRICT 6 PROJECT WEBSITE

[www.pa.gov/agencies/penndot/projects-near-you/district-6-projects](http://www.pa.gov/agencies/penndot/projects-near-you/district-6-projects)  
*Click on Delaware County > U.S. 1 (Media Bypass) ITS Installation Project*

ONLINE COMMENT FORM AVAILABLE AT: <https://forms.office.com/r/2exVTbEMi8>

OR SCAN THE QR CODE:

