

INDEX OF DRAWINGS	
SHEET NUMBER	TITLE
1	GENERAL PLAN & ELEVATION
2	TYPICAL SECTIONS & LOAD RATINGS
3	GENERAL NOTES

## REHABILITATION SCOPE OF WORK

1. CLEAR VEGETATION (ROADWAY ITEM)
2. PERFORM 1/4" SCARIFICATION OF THE EXISTING BRIDGE DECK
3. PERFORM HYDRODEMOLITION OF THE EXISTING BRIDGE DECK
4. PLACE LATEX MODIFIED CONCRETE WEARING SURFACE, 1 1/4" DEPTH ON BRIDGE DECK
5. MILL AND PAVE BOTH ROADWAY APPROACHES (ROADWAY ITEM)
6. RESEAL EXISTING DECK JOINTS AT BOTH ABUTMENTS
7. REPAIR SIDEWALK AT NEAR RIGHT APPROACH (ROADWAY ITEM)
8. PERFORM CONCRETE REPAIR, TYPES 1 & 2 AT BARRIER
9. CLEAN AND PAINT BEARINGS (TYP. BOTH ABUTS.)
10. PERFORM CONCRETE REPAIR, TYPE 2 AT EXISTING FAR ABUTMENT DIAPHRAGMS
11. PAINT SUPERSTRUCTURE
12. PERFORM CONCRETE REPAIR, TYPE 2 AT BOTH ABUTMENTS
13. PERFORM EPOXY INJECTION CRACK SEALING AT BOTH ABUTMENTS AND WINGWALLS
14. APPLY PROTECTIVE COATING (EPOXY RESIN) TO BOTH ABUTMENTS AND WINGWALLS

## HORIZONTAL CURVE DATA:

SR 2036  
MATCH EXISTING HORIZONTAL GEOMETRY

VERTICAL CURVE DATA:

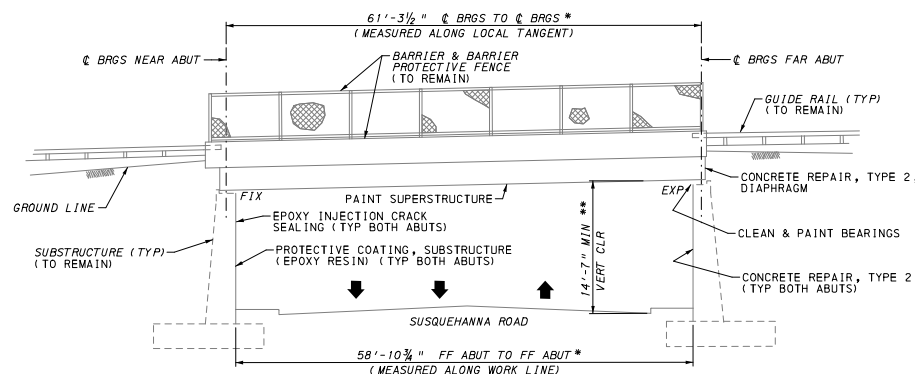
SR 2036  
MATCH EXISTING VERTICAL GEOMETRY

LEGEND:

- |    |  |
|----|--|
| ➡  | TRAFFIC DIRECTION  |
| *  | BASED ON INFORMATION PROVIDED ON EXISTING PLANS (S-5136).<br>VERIFY IN THE FIELD.                      |
| ** | BASED ON 2018 INSPECTION REPORT  |
| ■  | LIMITS OF SCARIFICATION, HYDRODEMOLITION, AND LATEX<br>MODIFIED CONCRETE WEARING SURFACE, 1 1/4" DEPTH |

NOTES:

1. LMC TO BE USED AS A PATCHING MATERIAL SIMULTANEOUSLY WITH OVERLAY OPERATION IN ACCORDANCE WITH PUBLICATION 408, SECTION 1040(f) AND SPECIAL PROVISIONS.



REINFORCEMENT BAR FABRICATION DETAILS	BC-736M	1-31-19
REINFORCED CONCRETE REPAIR	BC-783M	1-31-19
TYPICAL WATERPROOFING AND EXPANSION DETAILS	BC-788M	1-31-19
DESCRIPTION	DWG. NO.	REC'D DATE
<b>SUPPLEMENTAL DRAWINGS</b>		

## SUPPLEMENTAL DRAWINGS

PREPARED BY:  
GANNETT FLEMING, INC.  
1010 ADAMS AVENUE  
AUDUBON, PA 19403-2402

PRELIMINARY  
NOT FOR CONSTRUCTION  
JUNE 2025

\_\_\_\_\_, 2021

Mark	Description	By	Chk'd	Rec'd	Date
REVISIONS					

S.R. 2036 PREVIOUSLY KNOWN AS L.R. 46101-2  
BMS STR ID: 46-2036-0030-0695 MPMS/ECMS PROJ: 113813 BRKEY: 27660

COMMONWEALTH OF PENNSYLVANIA  
DEPARTMENT OF TRANSPORTATION

MONTGOMERY COUNTY

SR 2036 SECTION HB1

SEGMENT 0030 OFFSET 00695

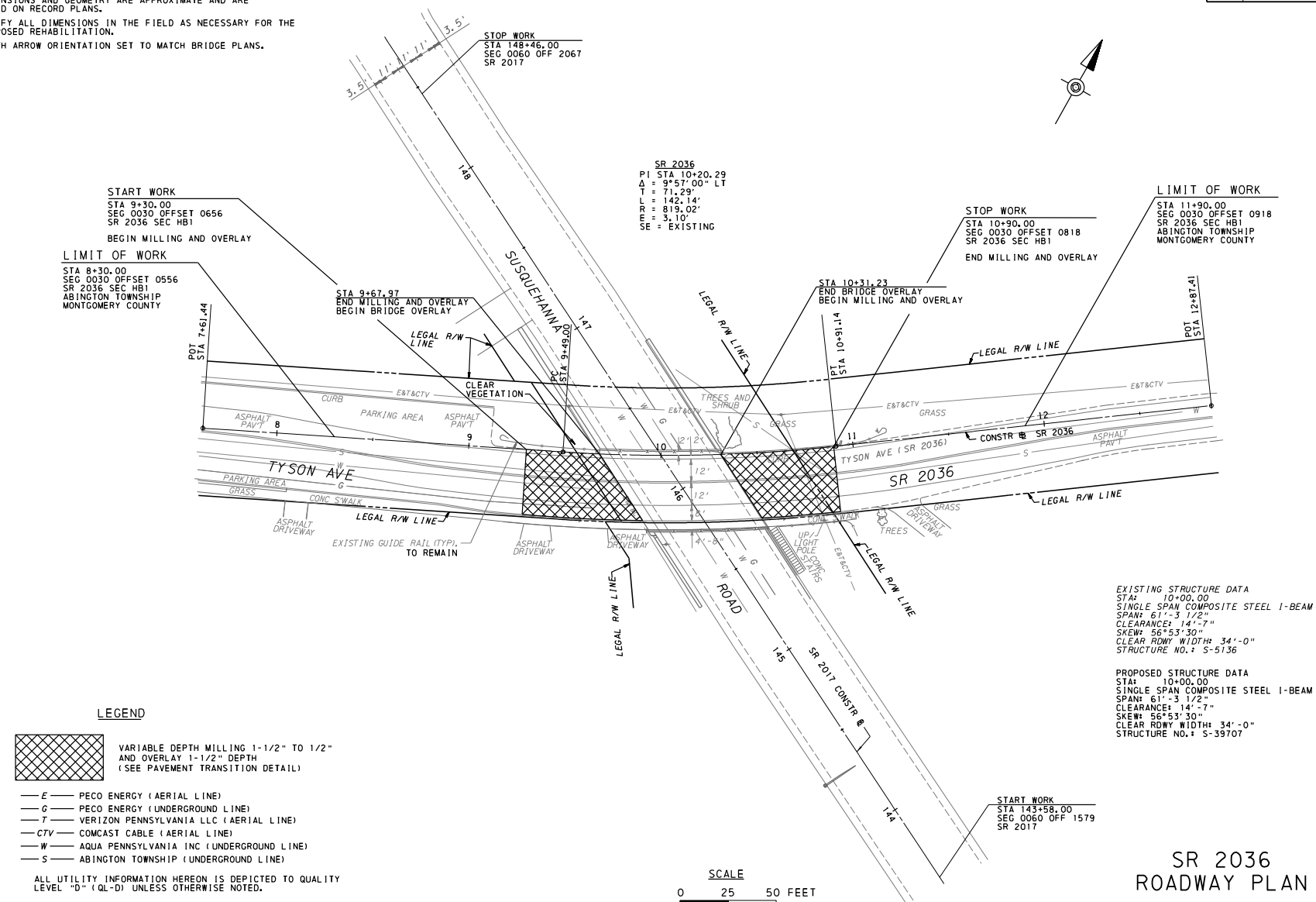
2036 ( TYSON AVENUE) STA.

OVER SUSQUEHANNA ROAD  
REHABILITATION OF SINGLE SPAN COMPOSITE STEEL I-BEAM BRIDGE  
GENERAL PLAN & ELEVATION

RECOMMENDED _____	SHEET <u>1</u> OF <u>3</u> + SUPPLEMENTAL DWGS.
DISTRICT 6-0 BRIDGE ENGINEER	S-XXXXX

MATCH PROPOSED DECK ELEVATION WITH PROPOSED OVERLAY.  
INFORMATION SHOWN ON THIS PLAN IS NOT BASED ON  
SURVEY.  
DIMENSIONS AND GEOMETRY ARE APPROXIMATE AND ARE  
BASED ON RECORD PLANS.  
VERIFY ALL DIMENSIONS IN THE FIELD AS NECESSARY FOR THE  
PROPOSED REHABILITATION.  
NORTH ARROW ORIENTATION SET TO MATCH BRIDGE PLANS.

DISTRICT	COUNTY	ROUTE	SECTION	SHEET
6-0	MONTGOMERY	2036	HB1	7 OF 20
ABINGTON TOWNSHIP				
REVISION NUMBER	REVISIONS			DATE BY

SR 2036  
ROADWAY PLAN

PRELIMINARY  
NOT FOR  
CONSTRUCTION  
JUNE 2025