

THIS WORK CONSISTS OF THE MAINTENANCE OF TRAFFIC AND THE PROTECTION OF THE TRAVELING PUBLIC APPROACHING THE CONSTRUCTION AREA AND WITHIN THE LIMITS OF CONSTRUCTION.

- A. THE SPECIAL PROVISIONS OF THE CONTRACT;
- B. PA CODE, TITLE 67, CHAPTER 212, OFFICIAL TRAFFIC CONTROL DEVICES;
- C. PENNDOT PUBLICATION 35, APPROVED CONSTRUCTION MATERIALS (BULLETIN 15);
- D. PENNDOT PUBLICATION 408, SPECIFICATIONS;
- E. PENNDOT PUBLICATION 213, TEMPORARY TRAFFIC CONTROL GUIDELINES;
- F. PENNDOT PUBLICATION 236, HANDBOOK OF APPROVED SIGNS;
- G. PENNDOT PUBLICATION 111, TRAFFIC CONTROL STANDARDS, TC-8600 AND TC-8700 SERIES;
- H. MANUAL ON UNIFORM TRAFFIC CONTROL DEVICES (MUTCD), 2009 EDITION.
- I. PENNDOT PUBLICATION NO. 46, TRAFFIC ENGINEERING MANUAL.

- A. START OF PHYSICAL WORK: FOURTEEN (14) CALENDAR DAYS.
- B. WIDTH, HEIGHT, OR WEIGHT RESTRICTIONS TO ANY ROADWAY: TEN (10) WORKING DAYS (EXCLUDING STATE HOLIDAYS) NOTE: RESTRICTIONS ARE FROM THE PRE-CONSTRUCTION WIDTH, HEIGHT, OR WEIGHT RESTRICTIONS
- C. REMOVAL OF WIDTH, HEIGHT, OR WEIGHT RESTRICTIONS TO ANY ROADWAY: IMMEDIATELY UPON REMOVAL.
- D. START OF ANY OPERATION AFFECTING TRAFFIC (LANE CLOSURES, TOTAL CLOSURES, ETC.): FOURTEEN (14) CALENDAR DAYS WITH A CONFIRMATION IMMEDIATELY PRIOR TO COMMENCING THE OPERATION.

REFER TO THE CONSTRUCTION REQUIREMENTS, CONSTRUCTION  
RESTRICTIONS, AND HOLIDAY RESTRICTIONS, WITHIN THE  
PROJECT CONTRACT, FOR ADDITIONAL INFORMATION  
PERTAINING TO THIS PROJECT.

OTHER THAN THE DETOURS PERMITTED IN THE CONTRACT TCP, NO WORK MAY BE DONE THAT WILL RESULT IN LANE CLOSURES OR IMPEDE THE FLOW OF TRAFFIC ON LEGAL HOLIDAYS AND MONDAY THROUGH FRIDAY, BETWEEN THE HOURS OF 6:00 AM TO 9:00 AM AND 3:00 PM TO 7:00 PM.

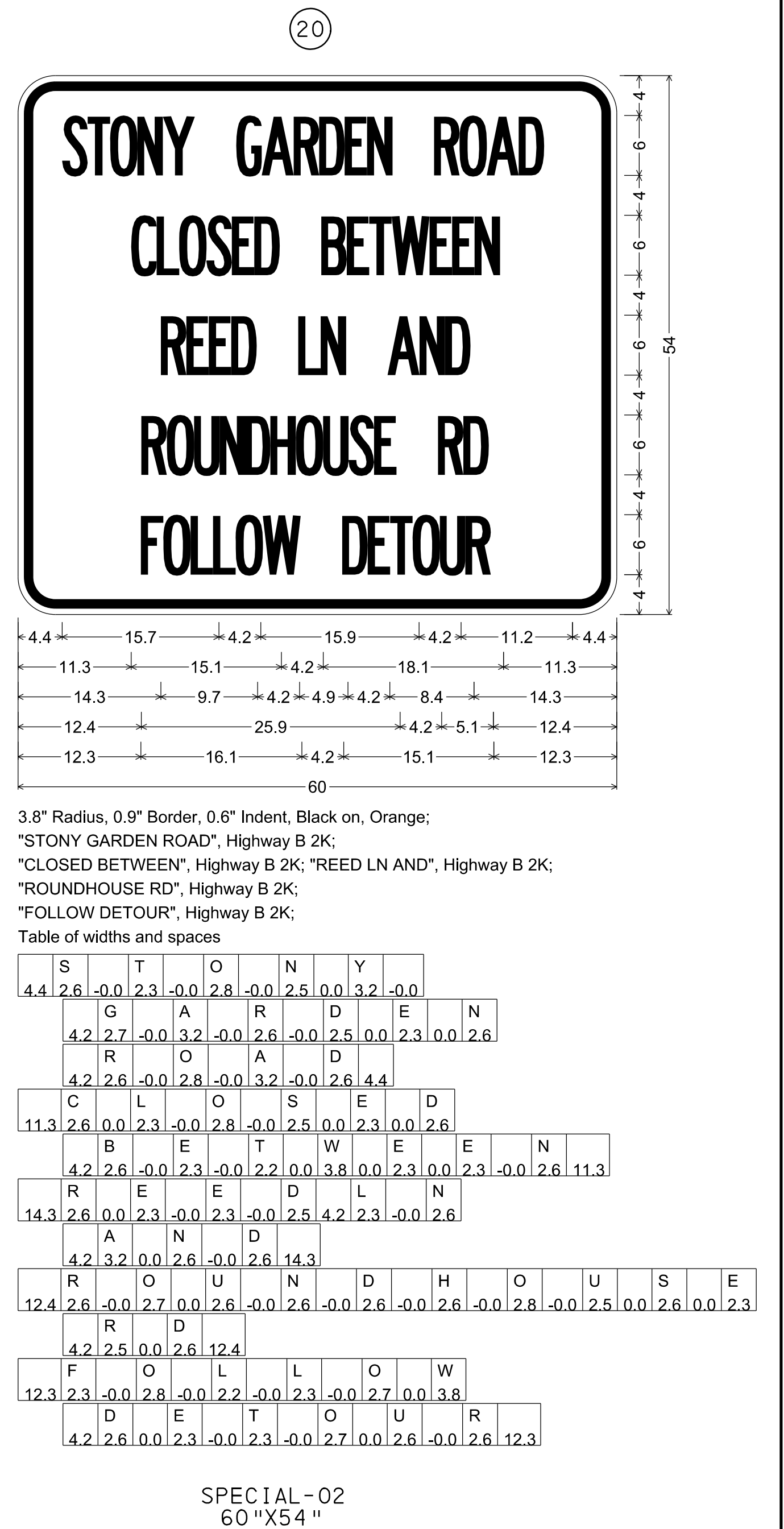
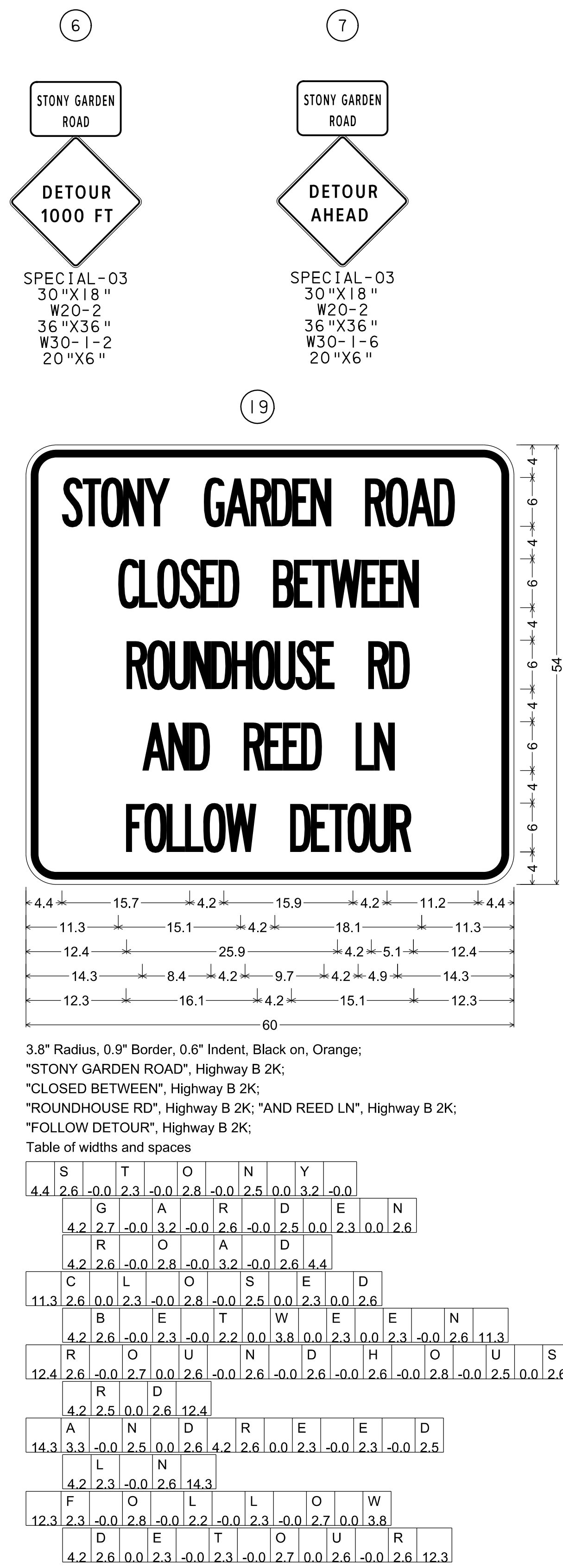
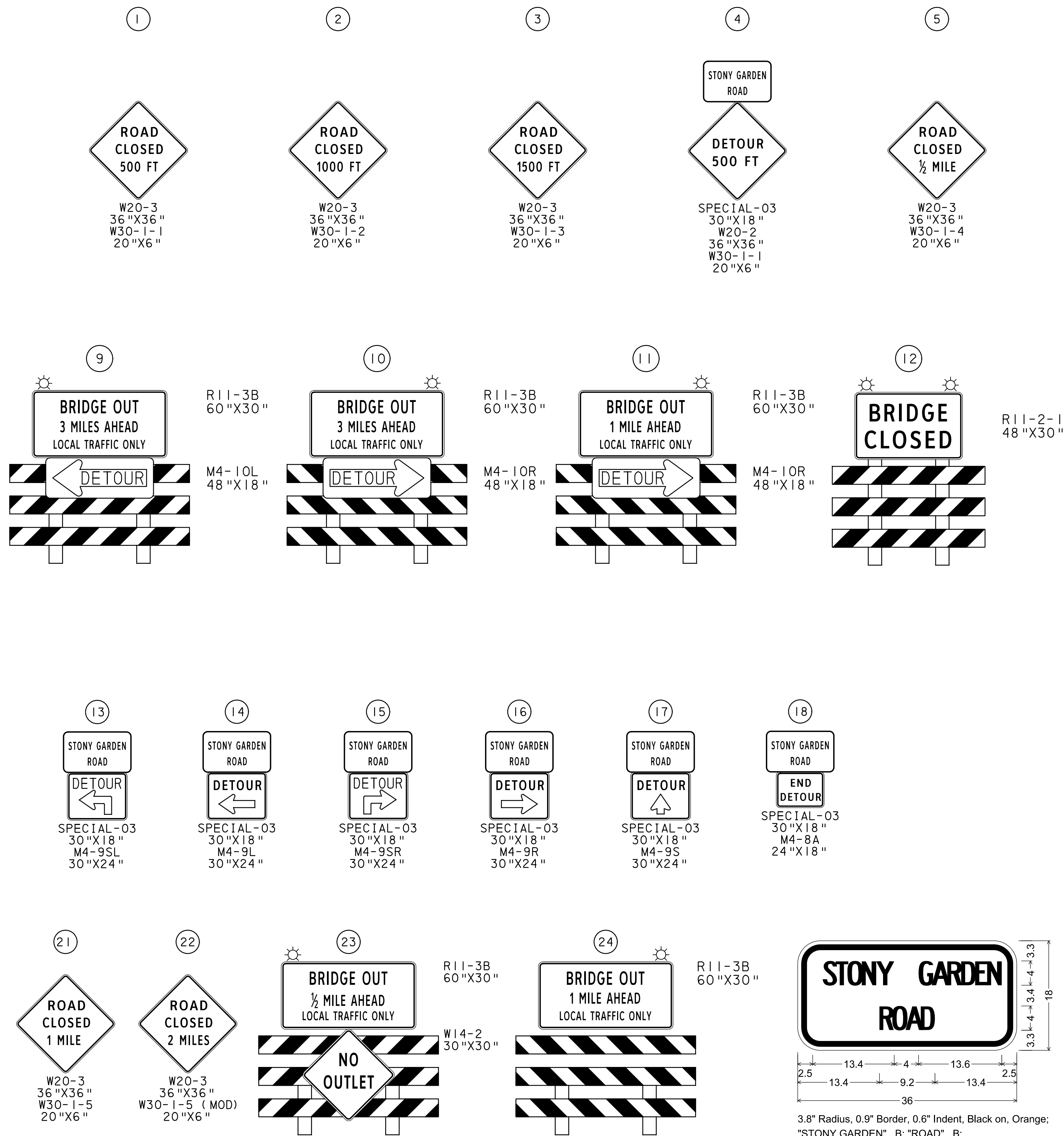
COORDINATE TRAFFIC CONTROL EFFORTS OF THIS PROJECT WITH THOSE OF ANY ADJACENT CONSTRUCTION PROJECTS. NO DETOUR MAY BE IMPLEMENTED PRIOR TO 9:00 AM ON THE DAY OF ROAD CLOSURE.

\* AS NEEDED





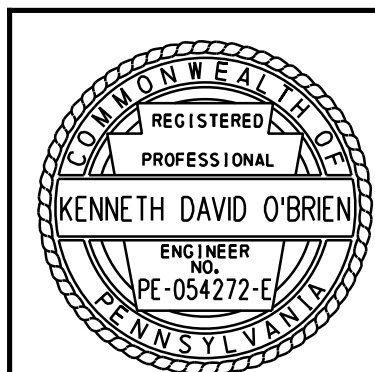
HAYCOCK TOWNSHIP			
REVISION NUMBER	REVISIONS	DATE	BY



NOTES:

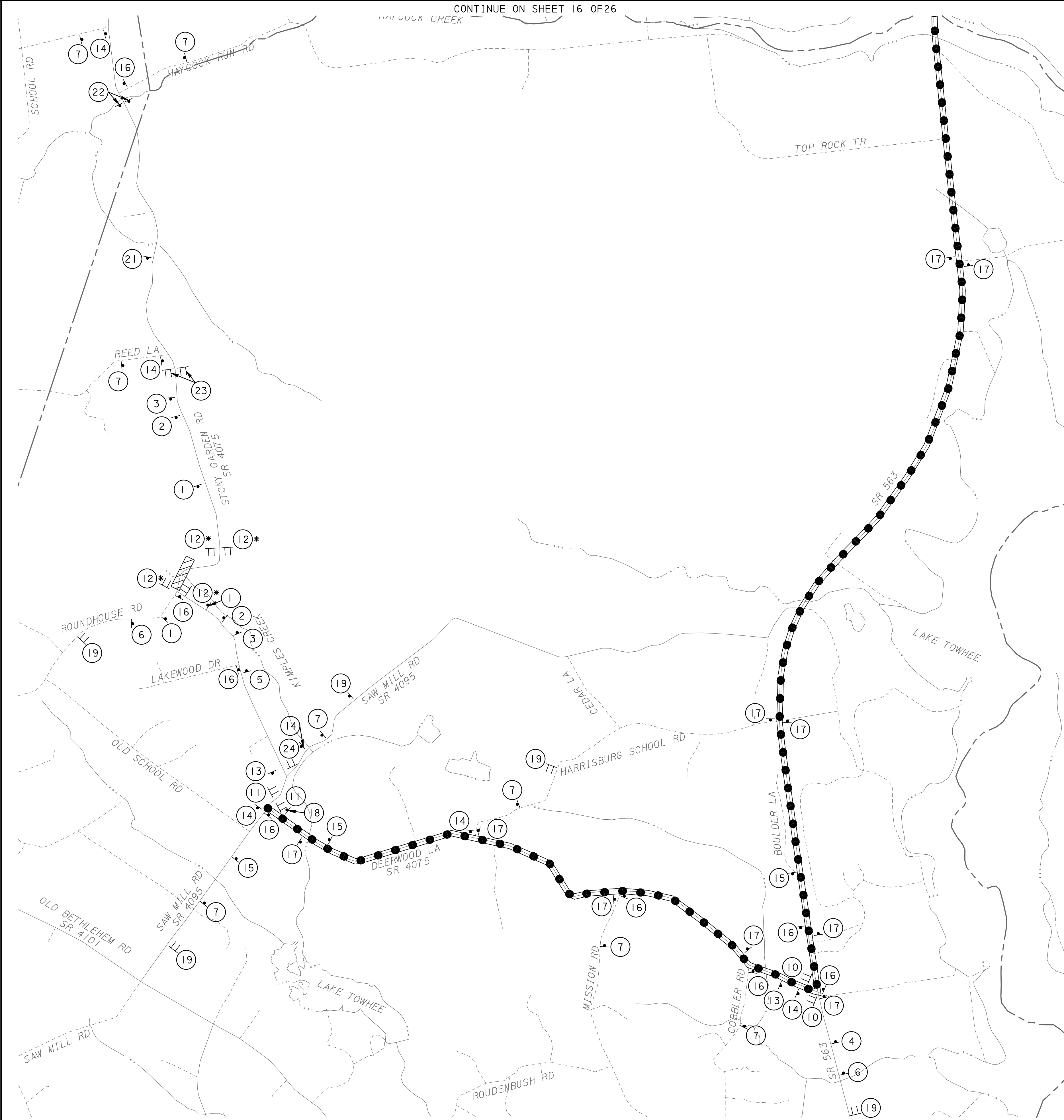
I. COLORS FOR SIGN TYPES M, W, R,  
AND SPECIAL SHALL BE AS FOLLOWS:  
BACKGROUND: ORANGE (REFLECTORIZED)  
LEGEND AND BORDER: BLACK (NON-REFLECTORIZED)

DETOUR  
SR 4075 STONY GARDEN RD  
09-4075-0060-0000  
BUCKS COUNTY



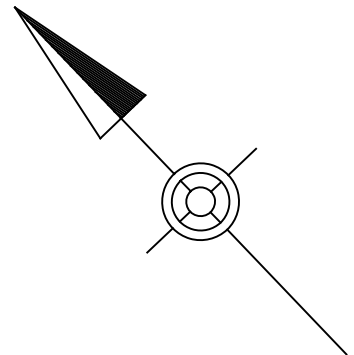
# TRAFFIC CONTROL PLAN

USER: CMCAHON | PLOT DRIVER: PennDOT\_PDF\_Memo.plt | PLOT DATE: 03-03-2025 | 4:21:53 PM  
PATH: c:\pwworking\ken\1479316\ | MODEL: default  
FILE: SR4075-STONY-GARDEN-GROUP-V-PLN01.dgn



CONTINUE ON SHEET 16 OF 26

DISTRICT	COUNTY	ROUTE	SECTION	SHEET	
6-0	BUCKS	4075	HBV	15 OF 26	
HAYCOCK TOWNSHIP					
REVISION NUMBER	REVISIONS			DATE	BY

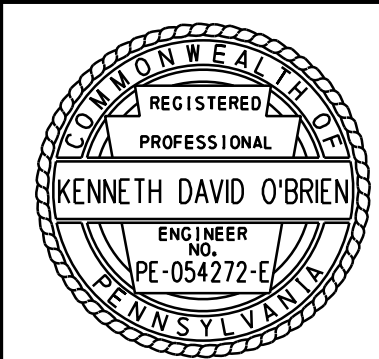


\* POSITION SIGN IN ORDER TO MAINTAIN DRIVEWAY ACCESS.

LEGEND

- DETOUR ROUTE
- STATE ROUTE
- LOCAL ROUTE
- MUNICIPAL BOUNDARY
- WATER/STREAM
- CLOSURE AREA
- SIGN
- TYPE III BARRICADE WITH SIGN

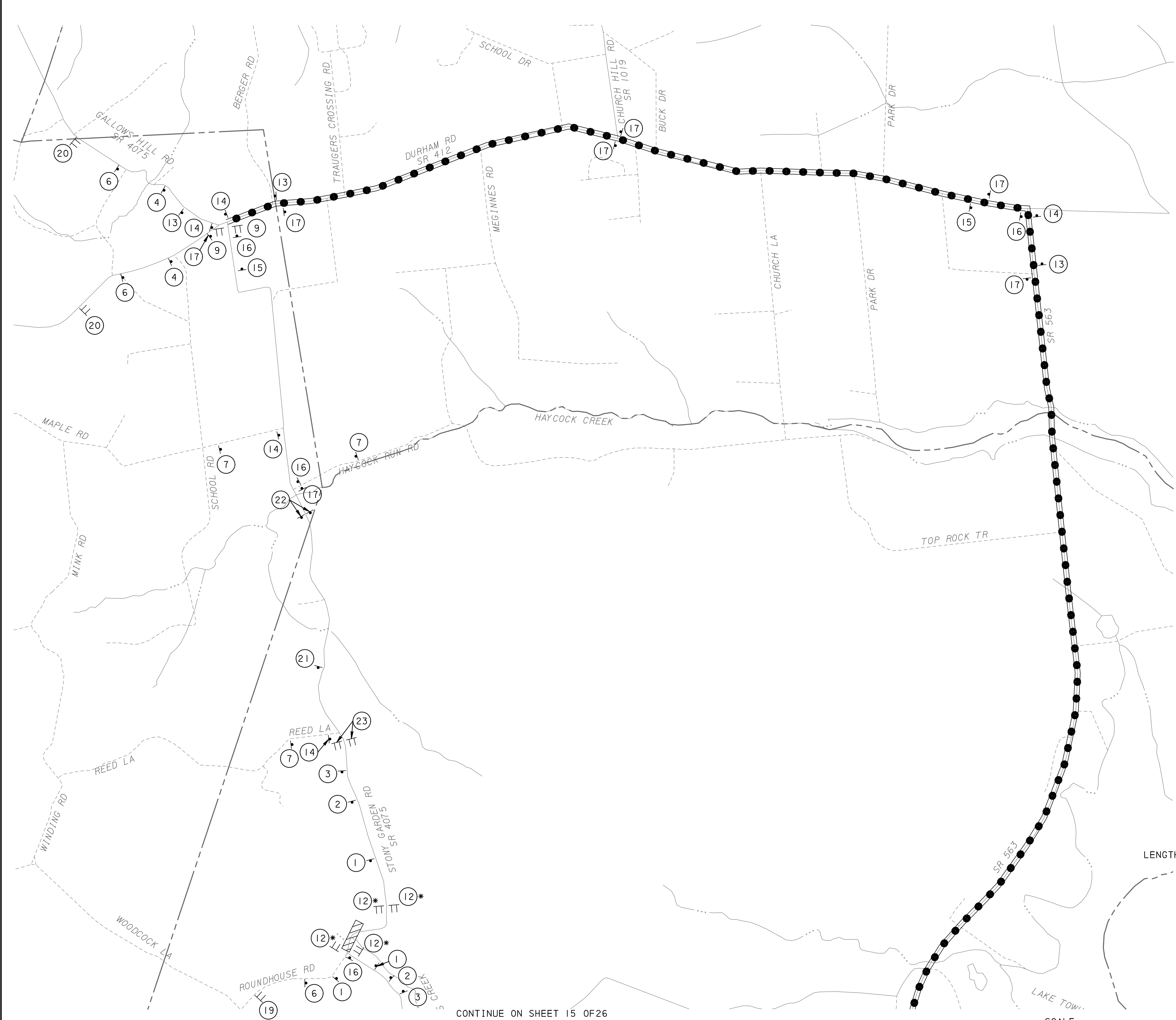
LENGTH OF DETOUR - 9.70 MILES



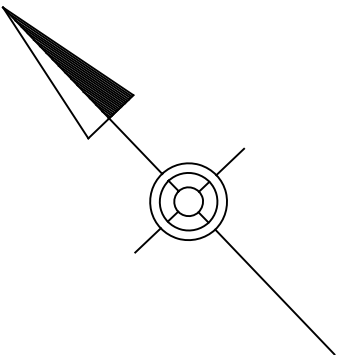
DETOUR  
SR 4075 STONY GARDEN ROAD  
09-4075-0060-0000  
BUCKS COUNTY

TRAFFIC CONTROL PLAN

USER: CMCMAHON | PLOT DRIVER: PennDOT\_PDF\_Memo.plt | PLOT DATE: 03-03-2025 4:21:55 PM  
PATH: c:\pwork\eng\des\101\1479916\ | MODEL: Default  
FILE: SR4075-STONEY-GARDEN-GROUP-V-PLN02.dgn



DISTRICT	COUNTY	ROUTE	SECTION	SHEET	
6-0	BUCKS	4075	HBV	16 OF 26	
HAYCOCK TOWNSHIP					
REVISION NUMBER	REVISIONS			DATE	BY



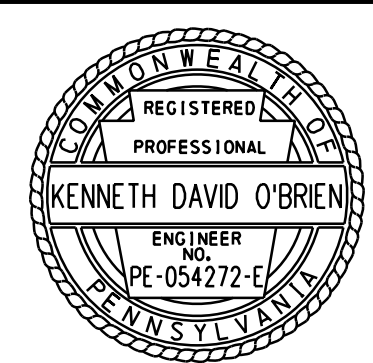
\* POSITION SIGN IN ORDER TO MAINTAIN DRIVEWAY ACCESS.

LEGEND

- DETOUR ROUTE
- STATE ROUTE
- LOCAL ROUTE
- MUNICIPAL BOUNDARY
- WATER/STREAM
- CLOSURE AREA
- SIGN
- TYPE III BARRICADE WITH SIGN

LENGTH OF DETOUR - 9.70 MILES

DETOUR  
SR 4075 STONY GARDEN ROAD  
09-4075-0060-0000  
BUCKS COUNTY



TRAFFIC CONTROL PLAN