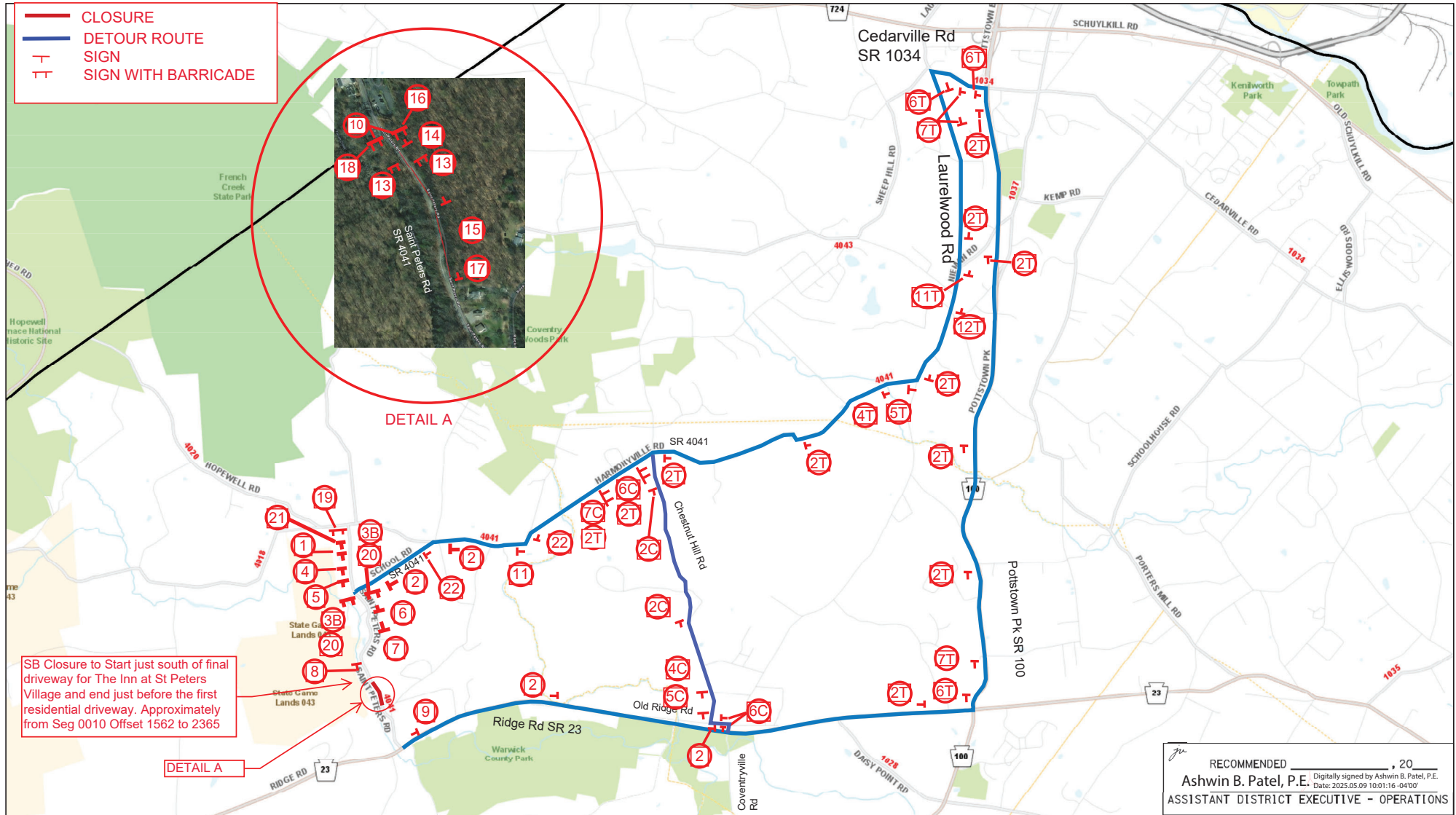


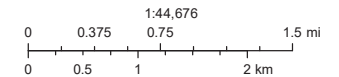
# St Peters Rd(SR 4041) SB Detour



February 27, 2025  
Legend

## Maintenance and Protection of Traffic Notes

1. Notify the District 6-0 Regional Traffic Management Center (RTMC) 610-205-6500 fifteen (15) minutes in advance of any proposed lane or shoulder restriction, road closure, or any operation impeding the flow of traffic. Notify the RTMC when the road is restored to normal operation.
2. All signing must conform to Pub 213 and Pub 236.
3. Maintain access to all driveways.
4. Install W23-101 sign 1 week prior to detour.



© 2023 PA Department of Transportation