

THIS WORK CONSISTS OF THE MAINTENANCE OF TRAFFIC
AND THE PROTECTION OF THE TRAVELING PUBLIC
APPROACHING THE CONSTRUCTION AREA AND WITHIN THE
LIMITS OF CONSTRUCTION.

- A. THE SPECIAL PROVISIONS OF THE CONTRACT;
- B. PA CODE, TITLE 67, CHAPTER 212, OFFICIAL TRAFFIC CONTROL DEVICES;
- C. PENNDOT PUBLICATION 35, APPROVED CONSTRUCTION MATERIALS (BULLETIN 15);
- D. PENNDOT PUBLICATION 408, SPECIFICATIONS;
- E. PENNDOT PUBLICATION 213, TEMPORARY TRAFFIC CONTROL GUIDELINES;
- F. PENNDOT PUBLICATION 236, HANDBOOK OF APPROVED SIGNS;
- G. PENNDOT PUBLICATION 111, TRAFFIC CONTROL STANDARDS, TC-8600 AND TC-8700 SERIES;
- H. MANUAL ON UNIFORM TRAFFIC CONTROL DEVICES (MUTCD), 2009 EDITION.
- I. PENNDOT PUBLICATION NO. 46, TRAFFIC ENGINEERING MANUAL.

- A. START OF PHYSICAL WORK: FOURTEEN (14) CALENDAR DAYS.
- B. WIDTH, HEIGHT, OR WEIGHT RESTRICTIONS TO ANY ROADWAY: TEN (10) WORKING DAYS (EXCLUDING STATE HOLIDAYS) NOTE: RESTRICTIONS ARE FROM THE PRE-CONSTRUCTION WIDTH, HEIGHT, OR WEIGHT RESTRICTIONS
- C. REMOVAL OF WIDTH, HEIGHT, OR WEIGHT RESTRICTION TO ANY ROADWAY: IMMEDIATELY UPON REMOVAL.
- D. START OF ANY OPERATION AFFECTING TRAFFIC (LANE CLOSURES, TOTAL CLOSURES, ETC.): FOURTEEN (14) CALENDAR DAYS WITH A CONFIRMATION IMMEDIATELY PRIOR TO COMMENCING THE OPERATION.

REFER TO THE CONSTRUCTION REQUIREMENTS, CONSTRUCTION RESTRICTIONS, AND HOLIDAY RESTRICTIONS, WITHIN THE PROJECT CONTRACT, FOR ADDITIONAL INFORMATION PERTAINING TO THIS PROJECT.

OTHER THAN THE DETOURS PERMITTED IN THE CONTRACT TCP, NO WORK MAY BE DONE THAT WILL RESULT IN LANE CLOSURES OR IMPEDE THE FLOW OF TRAFFIC ON LEGAL HOLIDAYS AND MONDAY THROUGH FRIDAY, BETWEEN THE HOURS OF 6:00 AM TO 9:00 AM AND 3:00 PM TO 7:00 PM.

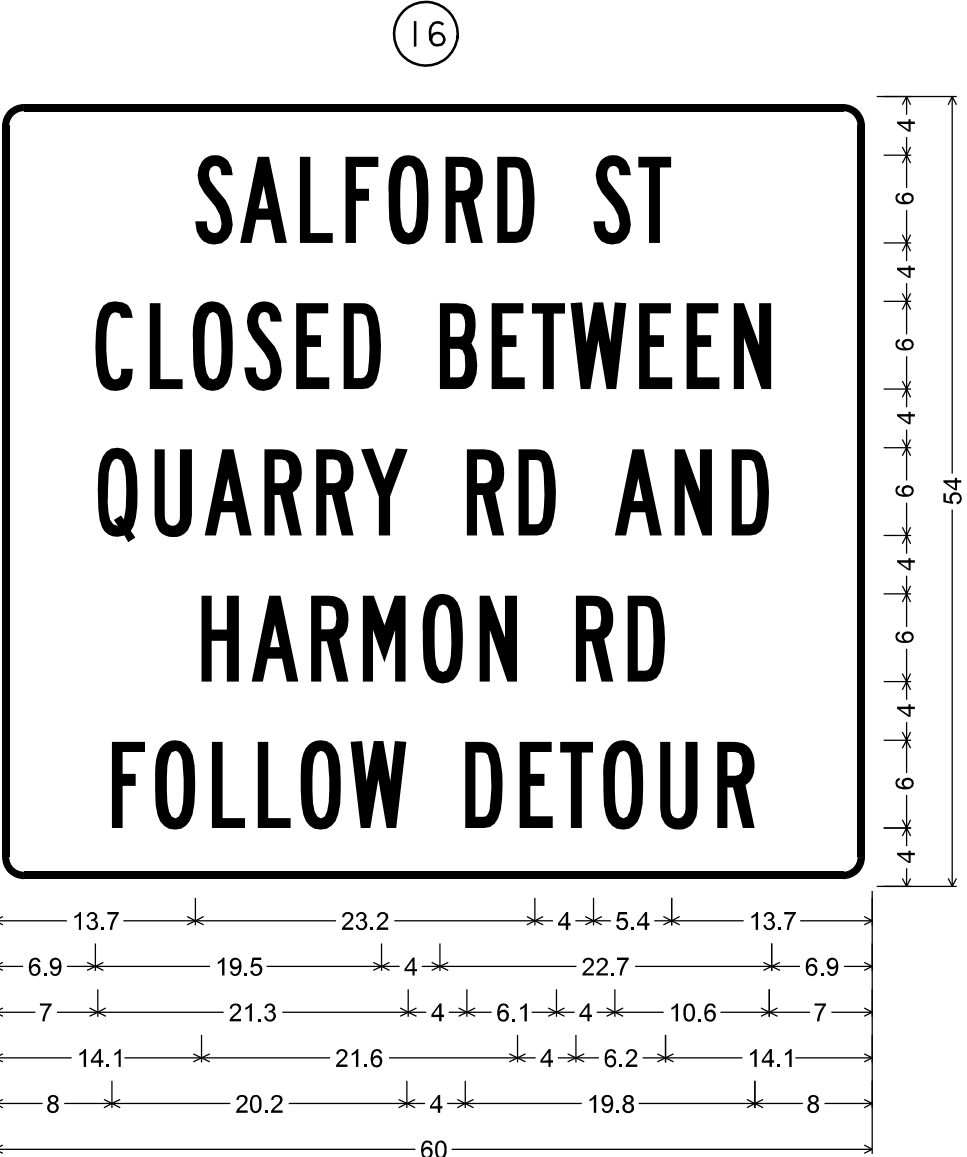
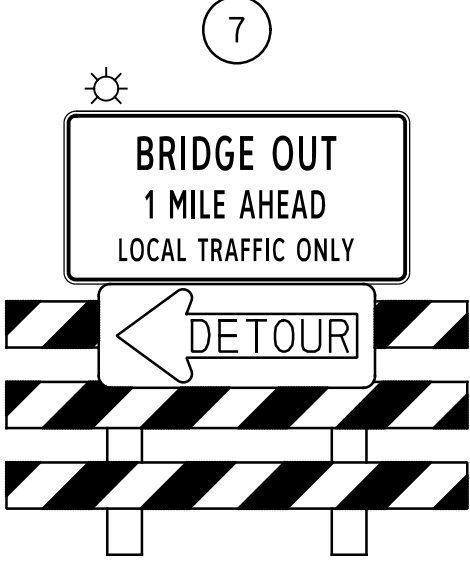
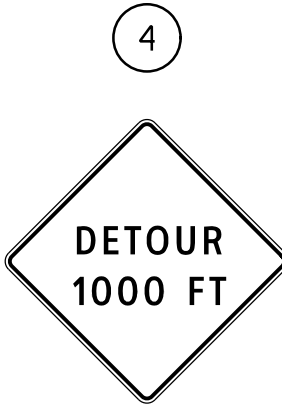
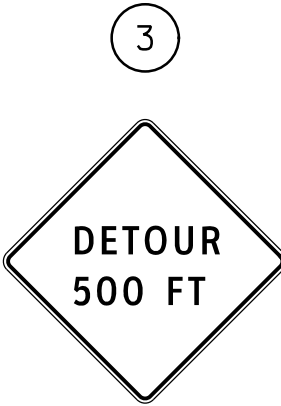
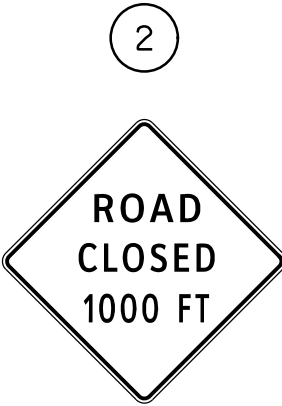
| DESCRIPTION | SHEET |
|-----------------------|-------|
| GENERAL NOTES | 13 |
| DETAILS | 14 |
| TRAFFIC CONTROL PLANS | 15 |

* AS NEEDED



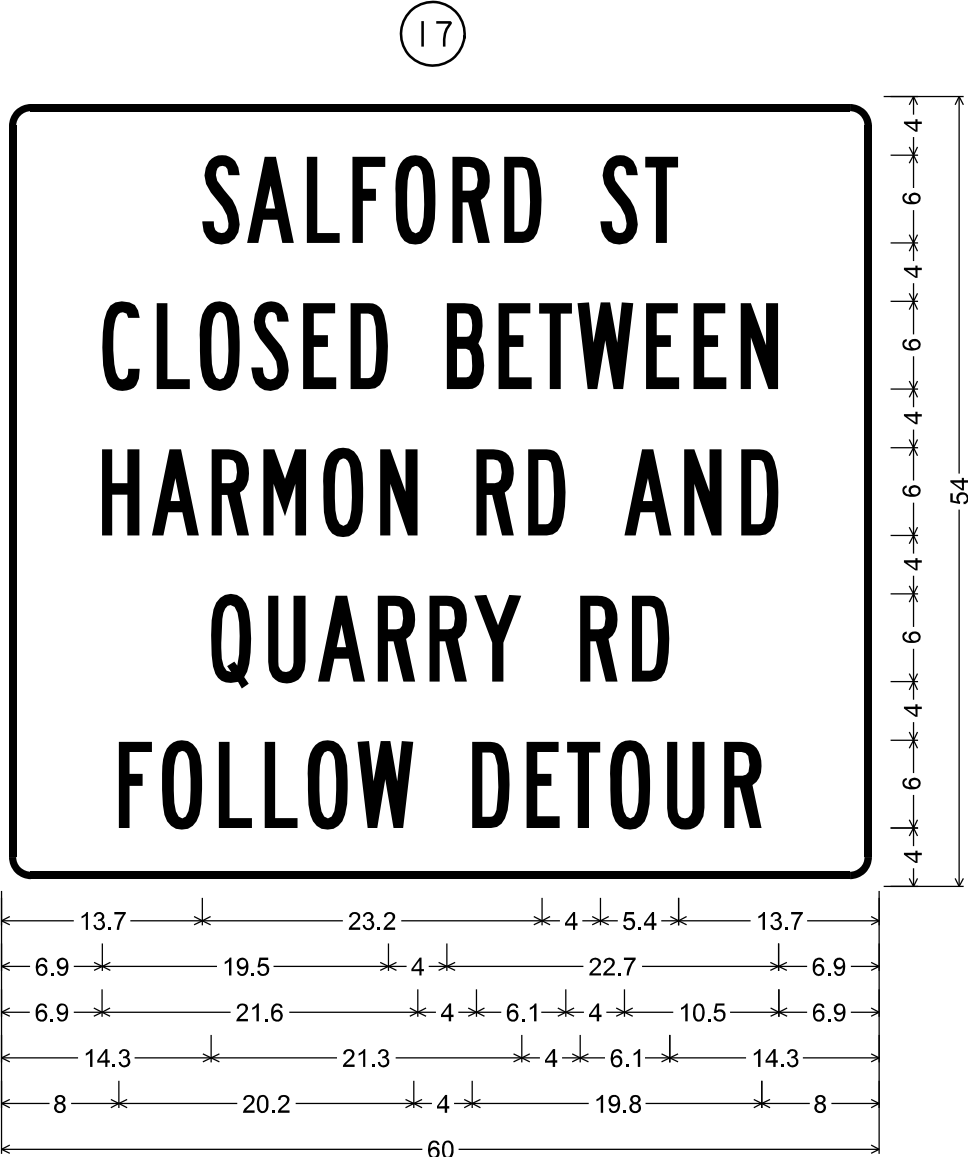
USER: CMCMHON | PLOT: DRIVER+PenDOT-.PDF- Memo-PI1c6fg | PLOT DATE: 02-28-2025 | 10:30:30 AM
PATH: c:\pwworking\111\2148775\ | FILE: SR 1024-SALFORD-GROUP-UP-TCP-DETOUR.dgn | MODEL: Default

| | | | | | |
|------------------------|------------|-------|---------|----------|----|
| DISTRICT | COUNTY | ROUTE | SECTION | SHEET | |
| 6-0 | MONTGOMERY | 1024 | HBV | 14 OF 23 | |
| UPPER SALFORD TOWNSHIP | | | | | |
| REVISION NUMBER | REVISIONS | | | DATE | BY |
| | | | | | |



2.0" Radius, 0.5" Border, 0.5" Indent, Black on Orange;
[SALFORD] White B 2K; [ST] White B 2K; [CLOSED] White B 2K;
[BETWEEN] White B 2K; [QUARRY] White B 2K; [RD] White B 2K;
[AND] White B 2K; [HARMON] White B 2K; [RD] White B 2K;
[FOLLOW] White B 2K; [DETOUR] White B 2K;

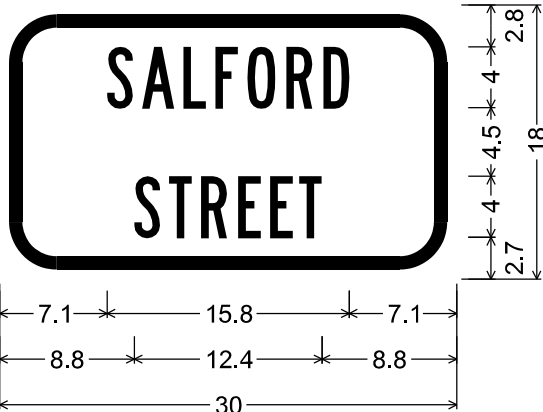
| | | | | | | | | | | | |
|------|-----|-----|-----|-----|-----|-----|-----|------|------|-----|-----|
| 13.7 | S | A | L | F | O | R | D | S | T | | |
| 3.1 | 4.1 | 3.1 | 2.9 | 3.9 | 3.6 | 6.5 | 3.1 | 2.3 | 13.7 | | |
| 6.9 | C | L | O | S | E | D | B | E | T | W | E |
| 3.7 | 2.9 | 3.6 | 3.5 | 3.3 | 6.5 | 3.6 | 2.7 | 2.7 | 4.7 | 3.2 | 2.6 |
| 7.0 | Q | U | A | R | R | Y | R | D | A | N | D |
| 3.9 | 3.5 | 4.0 | 3.6 | 3.0 | 7.3 | 3.5 | 6.6 | 4.1 | 3.9 | 2.6 | 7.0 |
| 14.1 | H | A | R | M | O | N | R | D | | | |
| 3.5 | 4.0 | 3.6 | 4.1 | 3.9 | 6.5 | 3.6 | 2.6 | 14.1 | | | |
| 8.0 | F | O | L | L | O | W | D | E | T | O | U |
| 3.0 | 3.9 | 3.1 | 2.9 | 3.4 | 7.9 | 3.7 | 2.8 | 2.9 | 3.9 | 3.9 | 8.0 |



2.0" Radius, 0.5" Border, 0.5" Indent, Black on Orange;
[SALFORD] White B 2K; [ST] White B 2K; [CLOSED] White B 2K;
[BETWEEN] White B 2K; [HARMON] White B 2K; [RD] White B 2K;
[AND] White B 2K; [QUARRY] White B 2K; [RD] White B 2K;
[FOLLOW] White B 2K; [DETOUR] White B 2K;

| | | | | | | | | | | | |
|------|-----|-----|-----|-----|-----|-----|-----|------|------|-----|-----|
| 13.7 | S | A | L | F | O | R | D | S | T | | |
| 3.1 | 4.1 | 3.1 | 2.9 | 3.9 | 3.6 | 6.5 | 3.1 | 2.3 | 13.7 | | |
| 6.9 | C | L | O | S | E | D | B | E | T | W | E |
| 3.7 | 2.9 | 3.6 | 3.5 | 3.3 | 6.5 | 3.6 | 2.7 | 2.7 | 4.7 | 3.2 | 2.6 |
| 6.9 | H | A | R | M | O | N | R | D | A | N | D |
| 3.4 | 4.1 | 3.5 | 4.1 | 3.9 | 6.6 | 3.5 | 6.6 | 4.1 | 3.9 | 2.5 | 6.9 |
| 14.3 | Q | U | A | R | R | Y | R | D | | | |
| 3.9 | 3.4 | 4.1 | 3.6 | 3.0 | 7.3 | 3.5 | 2.6 | 14.3 | | | |
| 8.0 | F | O | L | L | O | W | D | E | T | O | U |
| 3.0 | 3.9 | 3.1 | 2.9 | 3.4 | 7.9 | 3.7 | 2.8 | 2.9 | 3.9 | 3.9 | 8.0 |

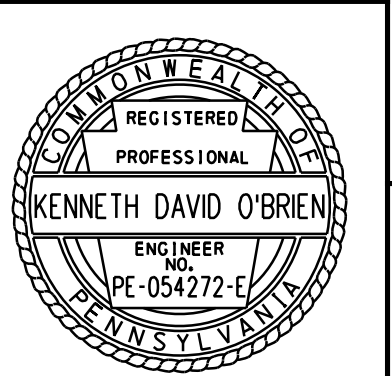
NOT TO SCALE



3.8" Radius, 0.9" Border, 0.6" Indent, Black on Orange;
[SALFORD] B; [STREET] B;
Table of widths and spaces.

| | | | | | | | | | |
|-----|-----|-----|-----|-----|-----|-----|-----|-----|-----|
| 7.1 | S | A | L | F | O | R | D | | |
| 1.6 | 0.6 | 2.2 | 0.6 | 1.5 | 0.6 | 1.8 | 0.7 | 1.6 | 7.1 |
| 8.8 | S | T | R | E | E | T | | | |
| 1.7 | 0.6 | 1.5 | 0.6 | 1.5 | 0.6 | 1.5 | 0.4 | 1.5 | 8.8 |

NOT TO SCALE

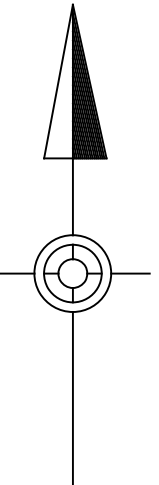


DETOUR
SR 1024 SALFORD STREET
46-1024-0040-2728
MONTGOMERY COUNTY

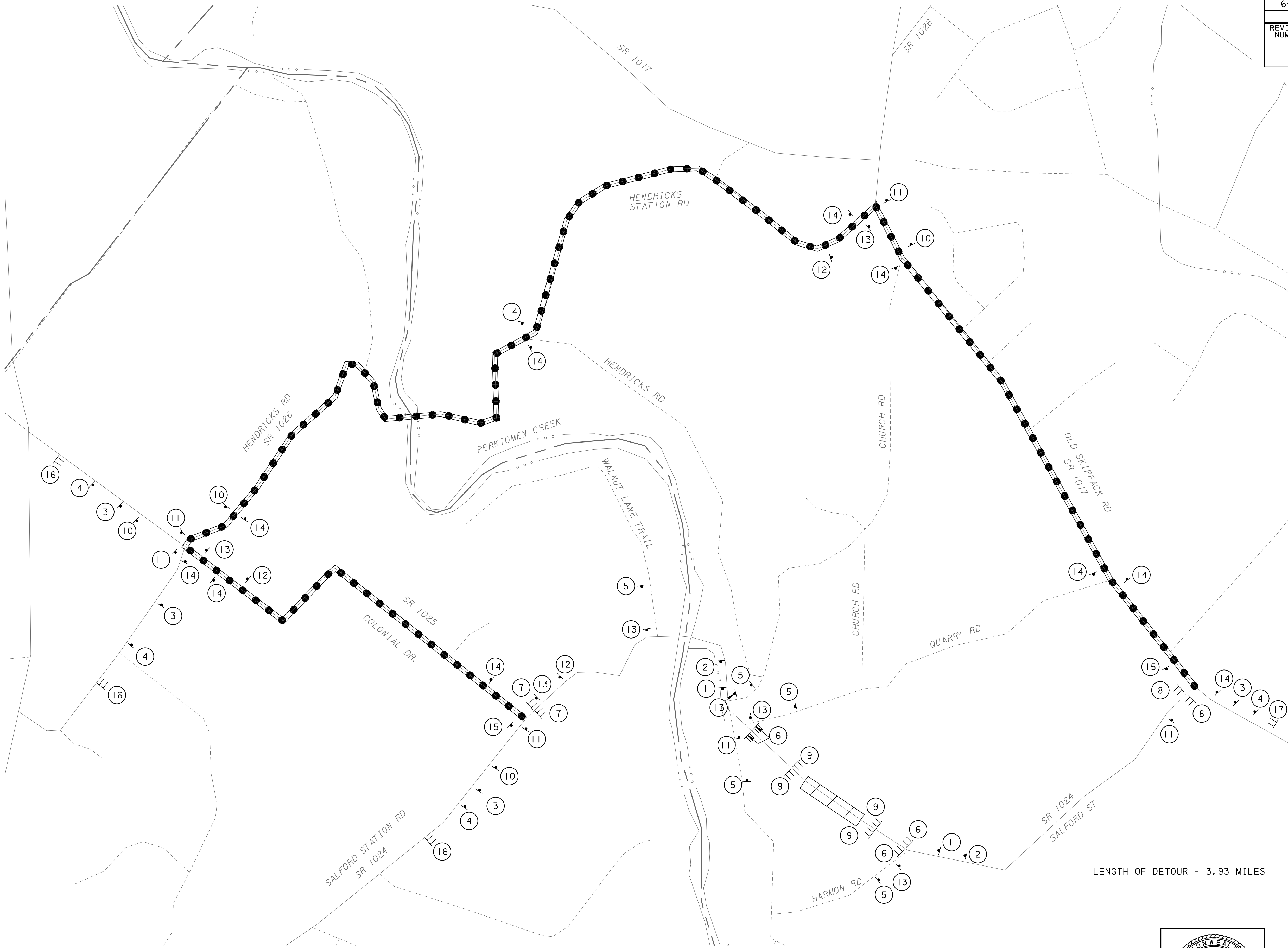
TRAFFIC CONTROL PLAN

- NOTES:
- COLORS FOR SIGN TYPES M, W, R, AND SPECIAL SHALL BE AS FOLLOWS:
BACKGROUND: ORANGE (REFLECTORIZED)
LEGEND AND BORDER: BLACK (NON-REFLECTORIZED)

| | | | | |
|------------------------|------------|-------|---------|------------|
| DISTRICT | COUNTY | ROUTE | SECTION | SHEET |
| 6-0 | MONTGOMERY | 1024 | HBV | 15 OF 23 |
| UPPER SALFORD TOWNSHIP | | | | |
| REVISION NUMBER | REVISIONS | | | DATE BY |
| | | | | |
| | | | | |



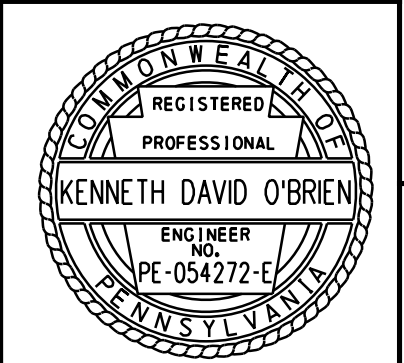
USER: CMCMHON PLOT DRIVER: PenDOT - PDF - Mono - Plotterg PLOT DATE: 02-28-2025 10:30:32 AM
PATH: c:\pwork\img\p11\g2148775\ FILE: SR 1024-SALFORD-GROUP-UTCP-PLN01.dgn MODEL: Default



LEGEND

- DETOUR ROUTE
- STATE ROUTE
- LOCAL ROUTE
- MUNICIPAL BOUNDARY
- WATER/STREAM
- WORK AREA
- SIGN
- TYPE III BARRICADE WITH SIGN

LENGTH OF DETOUR - 3.93 MILES



DETOUR
SR 1024 SALFORD STREET
46-1024-0040-2728
MONTGOMERY COUNTY

TRAFFIC CONTROL PLAN